

PETROLEUM INTERNATIONAL

&

TWIN ARROW, INC.



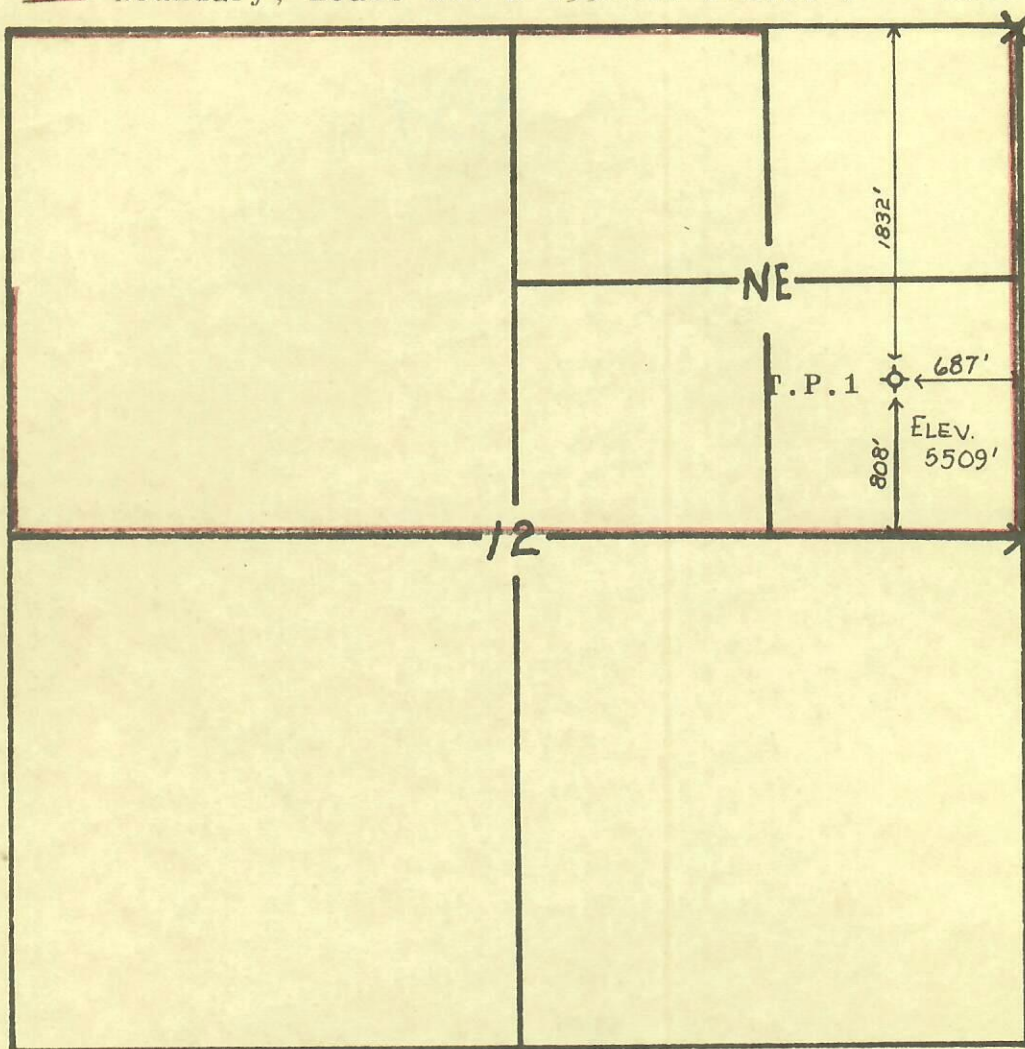
00065616

RECEIVED

JUN 1 1976

COLO. OIL & GAS CONS. COMM.

— Boundary, Lease No. D-033804B Scale: 1" = 1000'



WELL LOCATION T.P. 1

SE $\frac{1}{4}$ NE $\frac{1}{4}$ Section 12, T1N, R102W
Rio Blanco County, Colorado

I, Diana Grunig, do hereby certify that this plat was made from the field notes of a survey made by me on May 26, 1976.

Diana Grunig

76 480

76-480