

Inspection Photos

Location Name: TEP ROCKY MOUNTAIN LLC SOUTH LEVERICH 13-09 Pad

Location ID: 335045



Photo # 9319 From entrance to location



Photo # 9320 From entrance to location

Inspection Photos

Location Name: TEP ROCKY MOUNTAIN LLC SOUTH LEVERICH 13-09 Pad

Location ID: 335045

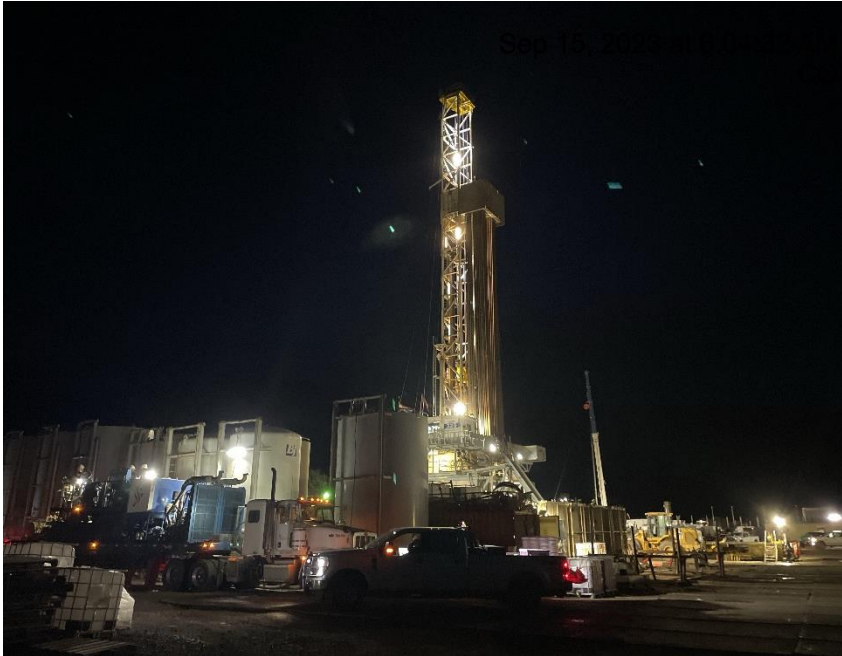


Photo # 9321 Location



Photo # 9322 Location



Inspection Photos

Location Name: TEP ROCKY MOUNTAIN LLC SOUTH LEVERICH 13-09 Pad

Location ID: 335045



Photo # 9323 Location



Photo # 9324 Location

Inspection Photos

Location Name: TEP ROCKY MOUNTAIN LLC SOUTH LEVERICH 13-09 Pad

Location ID: 335045

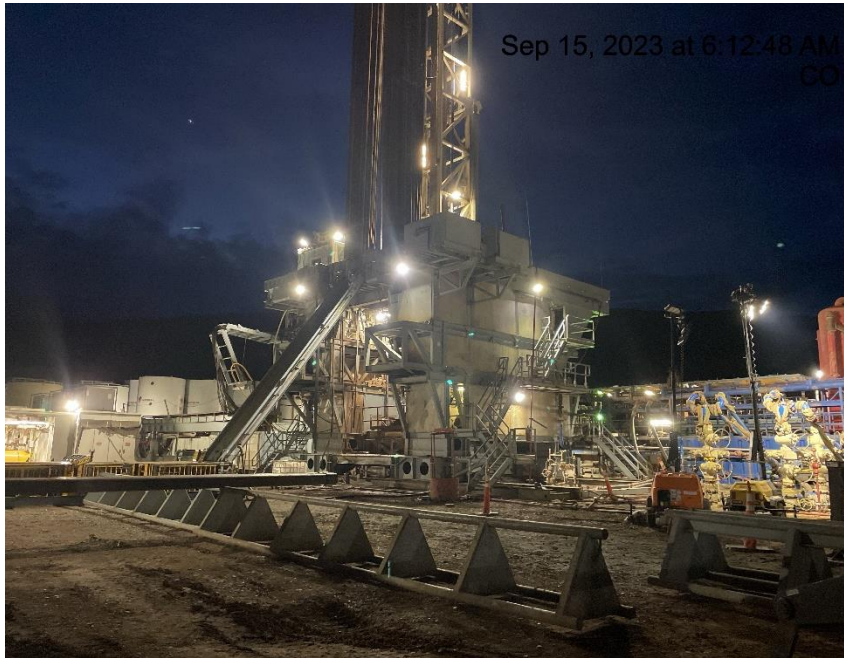


Photo # 9326 Location



Photo # 8327 Location



Inspection Photos

Location Name: TEP ROCKY MOUNTAIN LLC SOUTH LEVERICH 13-09 Pad

Location ID: 335045



Photo # 9328 Location



Photo # 9329 Location



Inspection Photos

Location Name: TEP ROCKY MOUNTAIN LLC SOUTH LEVERICH 13-09 Pad

Location ID: 335045



Photo # 9336 Location

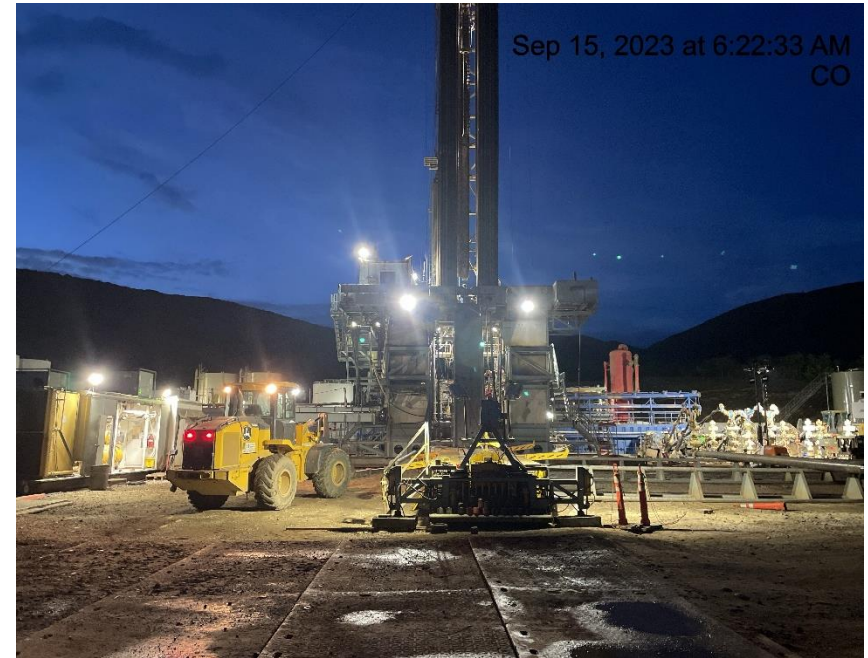


Photo # 9338 Location



Inspection Photos

Location Name: TEP ROCKY MOUNTAIN LLC SOUTH LEVERICH 13-09 Pad

Location ID: 335045



Photo # 9346 Location



Photo # 9347 Location

Inspection Photos

Location Name: TEP ROCKY MOUNTAIN LLC SOUTH LEVERICH 13-09 Pad

Location ID: 335045



Sep 15, 2023 at 6:25:48 AM
CO

Photo # 9348 Location



Sep 15, 2023 at 6:27:26 AM
CO

Photo # 9351 Location



COLORADO
Energy & Carbon Management
Commission
Department of Natural Resources

Inspection Photos

Location Name: TEP ROCKY MOUNTAIN LLC SOUTH LEVERICH 13-09 Pad

Location ID: 335045



Photo # 9352 Location



Photo # 9353 Location

Inspection Photos

Location Name: TEP ROCKY MOUNTAIN LLC SOUTH LEVERICH 13-09 Pad

Location ID: 335045



Photo # 9308 Location



Photo # 9309 Location



Inspection Photos

Location Name: TEP ROCKY MOUNTAIN LLC SOUTH LEVERICH 13-09 Pad

Location ID: 335045



Photo # 9311 Location



Photo # 9312 Location



Inspection Photos

Location Name: TEP ROCKY MOUNTAIN LLC SOUTH LEVERICH 13-09 Pad

Location ID: 335045



Photo # 9314 Location

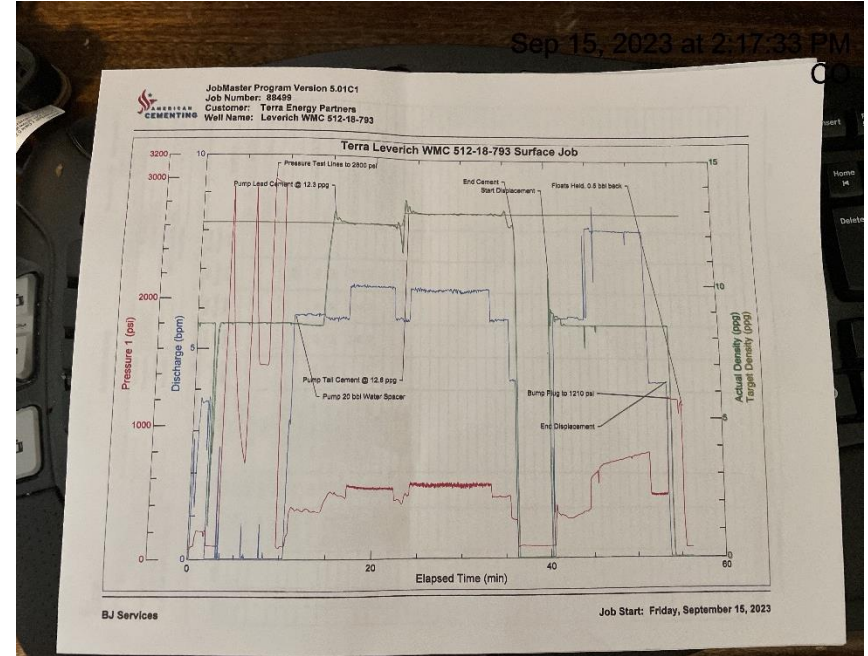


Photo # 9465 Cement job paperwork

Inspection Photos

Location Name: TEP ROCKY MOUNTAIN LLC SOUTH LEVERICH 13-09 Pad

Location ID: 335045

Sep 15, 2023 at 2:18 PM

Proposal #71361 - CallSheet #88499
Page 1 of 1
9/15/23 8:45

Cement Job Log

Well Information

Job Type: Surface
API #: 05-045-24570
Customer Name: Terra Energy Partners, LLC
Well Name: Leverich WMC 512-18-793
Supervisor Name: Michael Burton

Latitude: 39.415638
Longitude: -107.829054
Section: 13
Township: 75
Range: 36W

State: CO
County: Garfield
Target Formation:
District Location: Rifle
Sales Office:

Job Log - Page 81

Line #	Event #	Date (mm/dd/yyyy)	Time (hh:mm)	Event Description	Density (lb/gal)	Pump Rate (bbl/hr)	Pump Volume (bbl)	Pipe Pressure (psi)	Annular Pressure (psi)	Comments
1		9/14/2023	16:00	Callout						
2		9/14/2023	19:15	Arrive On Location						Location time is 02:30 9/15/23
3		9/14/2023	20:00	Rig Up/Iron						
4		9/14/2023	20:30	Waiting						Wait on rig to complete drilling and run casing
5		9/15/2023	5:00	Safety Meeting				2800		
6		9/15/2023	5:15	Pressure Test Lines						
7		9/15/2023	5:20	Pump Spacer						
8		9/15/2023	5:25	Pump Lead Cement	12.3	5.7	65	453		12.3 ppg confirmed with pressurized mud scale
9		9/15/2023	5:35	Pump Tail Cement	12.8	6.5	67	547		
10		9/15/2023	5:50	Drop Top Plug						
11		9/15/2023	5:51	Pump Displacement		5.6	20	322		50 bbl Cement to Surface
12		9/15/2023	5:55	Pump Displacement		8.1	40	706		
13		9/15/2023	6:00	Pump Displacement		8.1	60	755		
14		9/15/2023	6:03	Land Plug						483 final circ psi, landed at 1210 psi
15		9/15/2023	6:05	Check Floats						Floats held, 0.5 bbl back
16		9/15/2023	6:10	Rig Down/Iron						
17		9/15/2023	7:00	Depart Location						

Photo # 9466 Cement job paperwork

