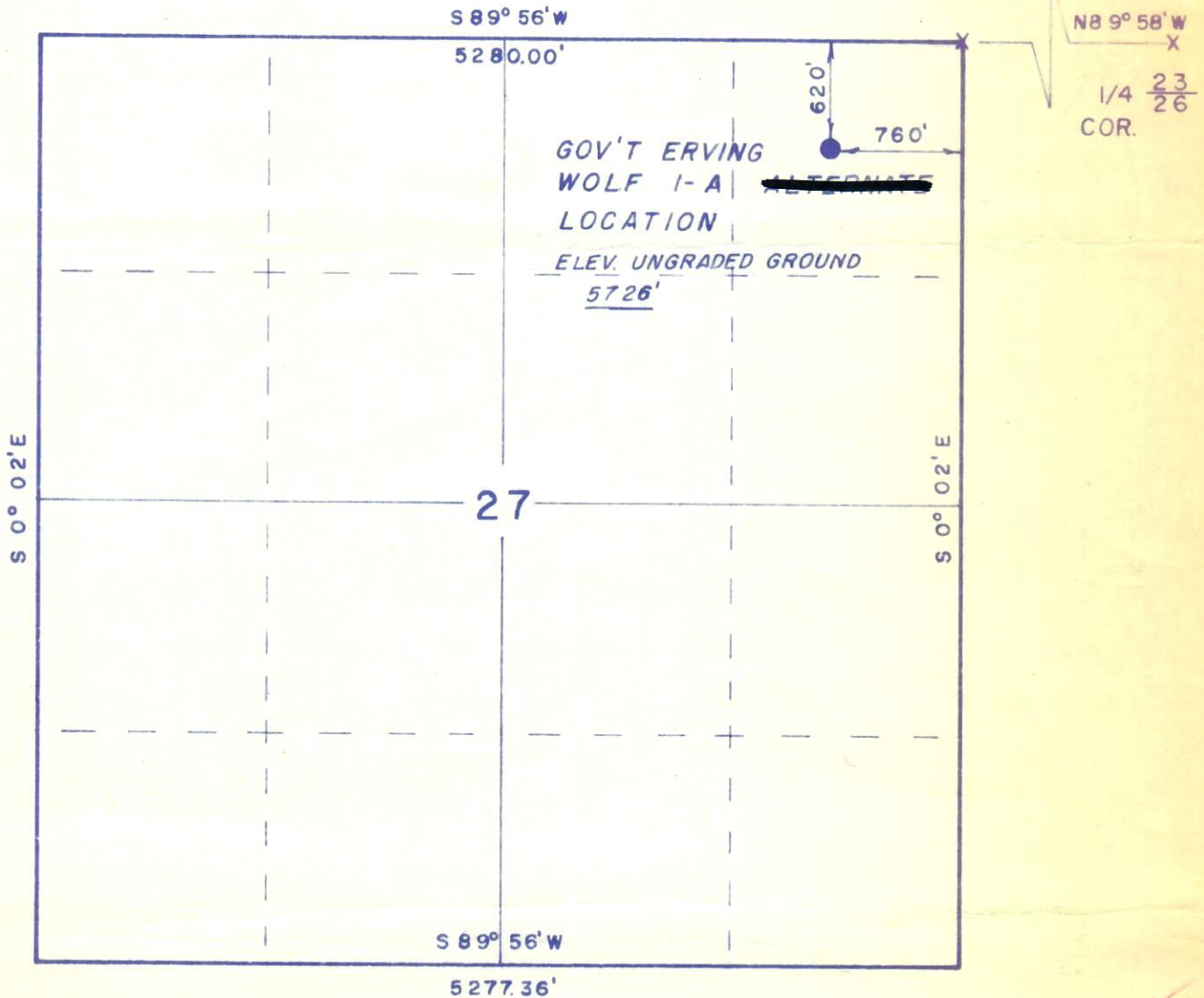




00065663

MAR 3 1965

OIL & GAS  
CONSERVATION COMMISSIONT 1 N, R 102 W, 6TH, P.M.  
COLO.RECEIVED  
BR OF OIL & GAS OPERATIONS  
FEB 25 1965  
U. S. GEOLOGICAL SURVEY  
DENVER, COLORADO

X = Corners Located (Stone)

Scale: 1" = 1000'

UINTAH ENGINEERING  
& LAND SURVEYINGP. O. Box 330  
Vernal, Utah

This is to certify that the above plat was prepared from field notes of actual surveys made by me or under my supervision and that the same are true and correct to the best of my knowledge and belief.

  
ROBERT MARSHALL  
REGISTERED LAND SURVEYOR  
COLORADO REGISTRATION NO 5839PARTY  
G. Stewart  
L. TaylorSURVEY  
TEXACO INC. WELL LOCATION GOV'T  
ERVING WOLF I-A LOCATED AS SHOWN  
IN THE NE 1/4 NE 1/4 SECTION 27, T 1 N,  
R 102 W, 6TH PM, RIO BLANCO COUNTY,DATE 11, Feb. 1965  
REFERENCES  
GLO Plat Approved  
24, Feb. 1906  
FILE Texaco

WEATHER Clear - Cold