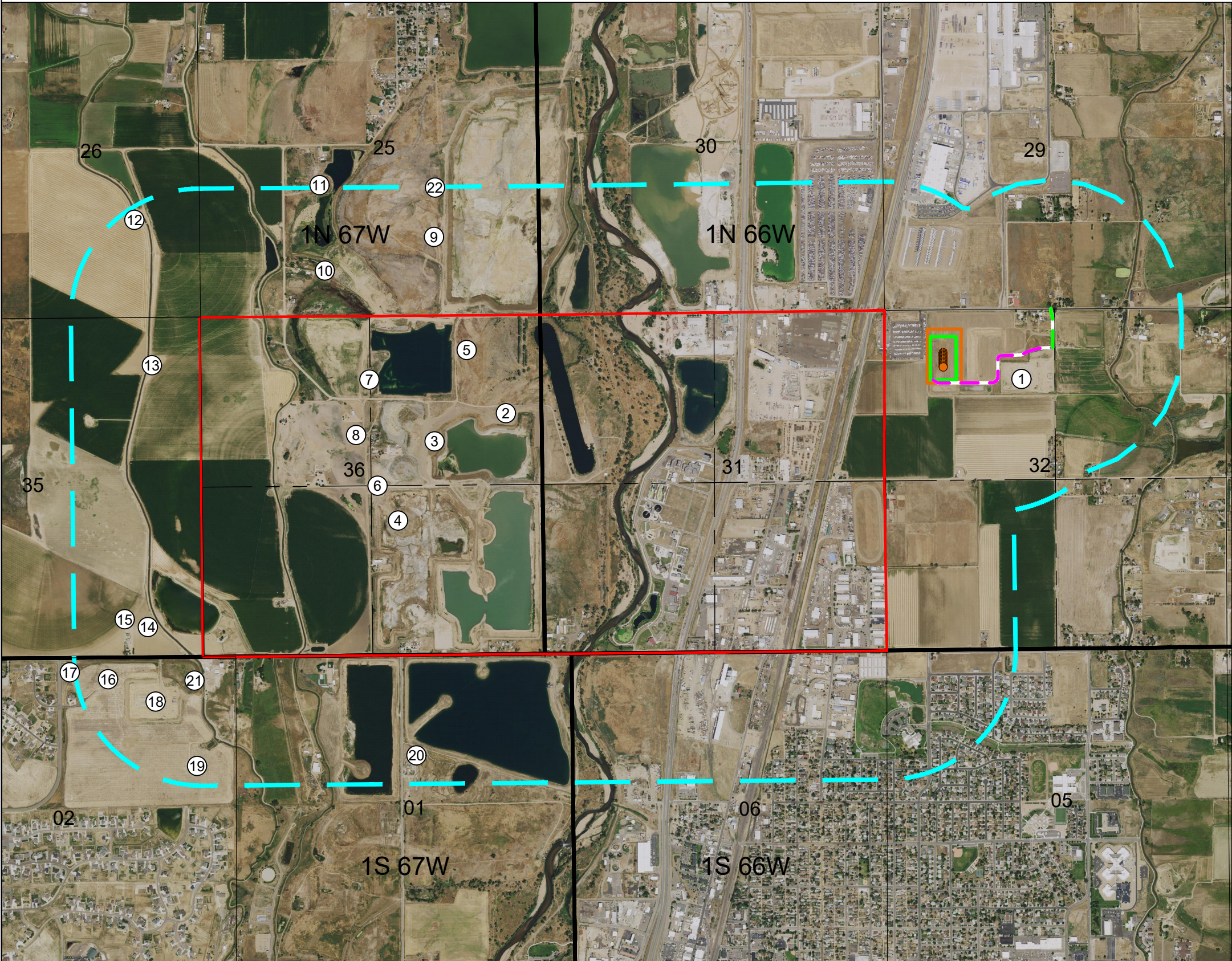
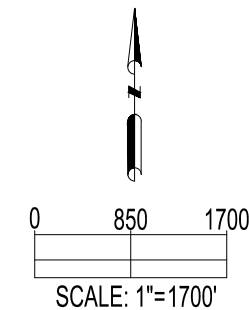


DITTMER PAD
RELATED LOCATION & FLOWLINE MAP



Location #	Location ID	Location Name	Location Status	Operator
1	447013	Dittmer KE Pad /29-032HN	AC	GREAT WESTERN OPERATING COMPANY LLC
2	330648	EIBERGER-61N67W /36SENE	AC	KP KAUFFMAN COMPANY INC
3	330652	EIBERGER-61N67W /36SWNE	AC	KP KAUFFMAN COMPANY INC
4	336012	KIRBY-61N67W /36NWSE	AC	PDC ENERGY INC
5	330534	BAURER-61N67W /36NENE	AC	KP KAUFFMAN COMPANY INC
6	446874	Kirby 33 /	AC	PDC ENERGY INC
7	328514	STRUCK-61N67W /36NWNE	AC	PETERSON ENERGY OPERATING INC
8	446845	Sakata 22-36 /	AC	PDC ENERGY INC
9	328021	W. DOUGLAS REED-61N67W /25NWSE	AC	KERR MCGEE OIL & GAS ONSHORE LP
10	327357	BRIGGS AGGREGATE-61N67W /25SESW	AC	PDC ENERGY INC
11	333222	BRIGGS-61N67W /25NESW	AC	KP KAUFFMAN COMPANY INC
12	319013	GRENEMEYER E UNIT-61N67W /26NESE	AC	CRESTONE PEAK RESOURCES OPERATING LLC
13	305130	SAKATA-61N67W /35NENE	AC	KERR MCGEE OIL & GAS ONSHORE LP
14	331864	SCHMIDT-61N67W /35SESE	AC	PDC ENERGY INC
15	470627	SCHMIDT-Production Facility /35SESE	AC	PDC ENERGY INC
16	320528	GUTHRIE-61S67W /2NWNE	AC	HELENA RESOURCES INC
17	470974	GUTHRIE-61S67W /2NENW	AC	HELENA RESOURCES INC
18	460375	Baseline LE Pad /	AC	GREAT WESTERN OPERATING COMPANY LLC
19	335591	GUTHRIE-61S67W /2SENE	AC	HELENA RESOURCES INC
20	446274	NORBERT SAMFORD-61S67W /1SWNE	AC	KERR MCGEE OIL & GAS ONSHORE LP
21	320527	GUTHRIE-61S67W /2NENE	AC	HELENA RESOURCES INC
22	447132	Briggs Aggregate 2 /	AC	PDC ENERGY INC


THERE ARE NO OFFSITE FLOWLINES PLANNED FOR THIS LOCATION



DATA SOURCE:
AERIAL IMAGERY: NAIP 2021
WELLS/APPROVED LOCATIONS: COGCC

PUBLICLY AVAILABLE DATA SOURCES HAVE NOT
BEEN INDEPENDENTLY VERIFIED BY ASCENT.

DISCLAIMER:
THIS PLOT DOES NOT REPRESENT A MONUMENTED LAND SURVEY AND SHOULD NOT BE RELIED UPON TO DETERMINE BOUNDARY LINES.
PROPERTY OWNERSHIP OR OTHER PROPERTY INTERESTS, PARCEL LINES, IF DEPICTED HAVE NOT BEEN FIELD VERIFIED AND MAY BE BASED
UPON PUBLICLY AVAILABLE DATA THAT ALSO HAS NOT BEEN INDEPENDENTLY VERIFIED.



8620 Wolff Court
Westminster, CO 80031
(303) 928-7128
www.ascentgeomatics.com

FIELD
DATE:
10-13-22

DRAWING
DATE:
02-01-23

DRAWN BY:
CSG

CHECKED BY:
HJL

SITE NAME:
DITTMER PAD

SURFACE LOCATION:
NW 1/4 NW 1/4 SEC. 32, T1N, R66W, 6TH P.M.
WELD COUNTY, COLORADO

LEGEND:

 = 2000' RADIUS FROM OGDP

 = SECTION LINE

 = TOWNSHIP LINE

 = PERMITTED COGCC LOCATION

 = OGDP BOUNDARY

 = WORKING PAD SURFACE

 = OIL & GAS LOCATION

 = PROPOSED ACCESS ROAD

 = EXISTING ACCESS ROAD

PREPARED FOR:

