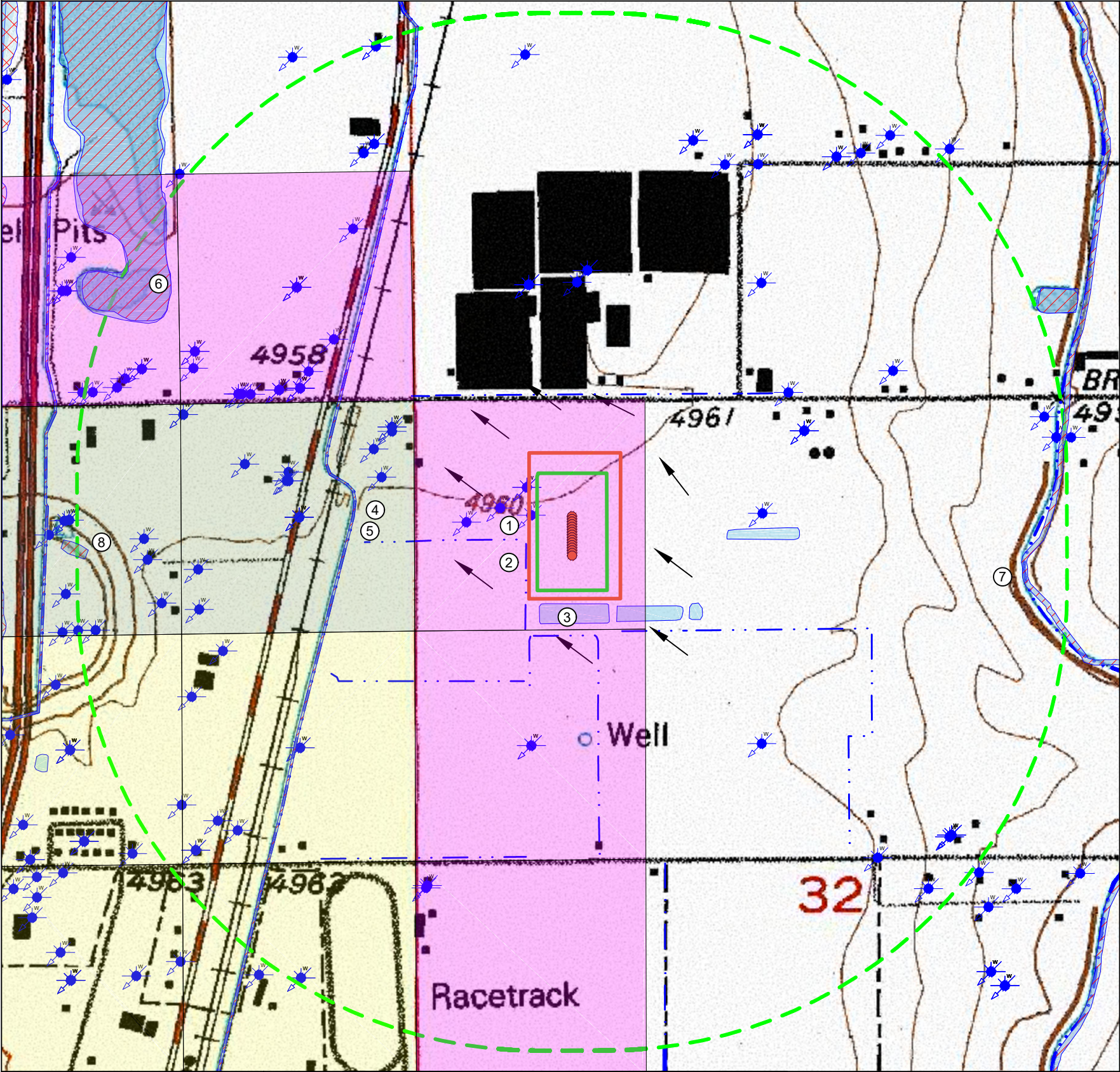


DITTMER PAD  
HYDROLOGY MAP



IMPROVEMENTS:  
(AS MEASURED FROM THE PROPOSED WORKING PAD SURFACE)

1. WATER WELL:	±34' W, ±58' W, ±212' W, ±406' W, ±872' NW, ±880' NW, ±891' S, ±892' W, ±893' E, ±950' W, ±1083' N, ±1096' N, ±1141' NE, ±1160' NE, ±1164' N, ±1250' SE, ±1365' W, ±1403' NW, ±1407' NE, ±1426' W, ±1427' W, ±1436' W, ±1441' NW, ±1451' NW, ±1561' NW, ±1633' SW, ±1633' SW, ±1678' W, ±1711' NW, ±1745' NE, ±1749' NW, ±1758' NW, ±1760' NW, ±1778' NW, ±1807' SW, ±1822' SW, ±1837' SW, ±1897' NE, ±1943' W, ±1946' W, ±1973' NE, ±1974' NE, ±2061' W, ±2061' W, ±2067' NW, ±2075' SW, ±2091' NW, ±2092' NW, ±2111' NW, ±2127' NE, ±2157' W, ±2184' SE, ±2202' SW, ±2236' W, ±2244' NE, ±2256' W, ±2260' SW, ±2345' NE, ±2350' NW, ±2383' SW, ±2403' N, ±2421' SE, ±2425' SE, ±2431' NW, ±2462' SW, ±2463' NW, ±2516' SE, ±2530' NE, ±2532' E, ±2545' W, ±2588' E, ±2595' NW, ±2604' SW, ±2621' NW
2. DITCH:	±64' W, ±250' SE, ±259' S, ±267' S, ±451' N, ±460' NE, ±526' S, ±561' SE, ±767' NW, ±858' NE, ±930' NE, ±1529' S, ±1540' E, ±1601' SE
3. POND:	±76' S, ±108' SE, ±484' SE, ±688' E, ±2326' NW
4. EXCAVATED SEASONALLY FLOODED INTERMITTENT RIVERINE WETLAND:	±1038' W, ±2378' E
5. FULTON LATERAL DITCH:	±1044' W
6. LACUSTRINE LAKE WETLAND:	±2329' NW
7. FULTON DITCH:	±2393' E
8. EXCAVATED SEMIPERMANENTLY FLOODED PALUSTRINE WETLAND:	±2577' W

THERE ARE NO ACTIVE PUBLIC WATER SYSTEMS FACILITIES, PWS INTAKES <15 MILES UPSTREAM, WITHIN THE 2,640' RADIUS.

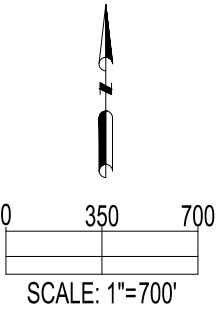
PWS ID: CO0162175  
Population Served: 0 (Inactive)  
Contact Information  
CHIKUITO, HENRY  
PO BOX 994  
BRIGHTON, CO 80601

NEAREST WATER WELL INFO:  
(AS MEASURED FROM THE NEAREST EDGE OF THE PROPOSED WORKING PAD SURFACE)

PERMIT #	RECEIPT #	STATIC WATER LEVEL	DISTANCE/DIRECTION
26201-	9063175	32'	±34' W

NEAREST SURFACE WATER FEATURE:  
(AS MEASURED FROM THE NEAREST EDGE OF THE PROPOSED WORKING PAD SURFACE)

SURFACE WATER (DITCH)	±64' W
-----------------------	--------



DATA SOURCE:  
TOPO MAP: USGS  
WATER WELLS: COLORADO DWR  
NHD: USGS  
WETLANDS: USFWS  
FLOODPLAINS: FEMA  
PWS/RULE 411 BUFFERS: COGCC/CDPHE

PUBLICLY AVAILABLE DATA SOURCES HAVE NOT BEEN INDEPENDENTLY VERIFIED BY ASCENT.

DISCLAIMER:  
THIS PLOT DOES NOT REPRESENT A MONUMENTED LAND SURVEY AND SHOULD NOT BE RELIED UPON TO DETERMINE BOUNDARY LINES, PROPERTY OWNERSHIP OR OTHER PROPERTY INTERESTS. PARCEL LINES, IF DEPICTED HAVE NOT BEEN FIELD VERIFIED AND MAY BE BASED UPON PUBLICLY AVAILABLE DATA THAT ALSO HAS NOT BEEN INDEPENDENTLY VERIFIED.



FIELD DATE:  
10-13-22

DRAWN BY:  
HJL

DRAWING DATE:  
01-20-23

CHECKED BY:  
CSG

SITE NAME:  
DITTMER PAD

SURFACE LOCATION:  
NW 1/4 NW 1/4 SEC. 32, T1N, R66W, 6TH P.M.  
WELD COUNTY, COLORADO

LEGEND:

- PROPOSED WELL
- WATER WELL
- FLOW DIRECTION

- FLOODPLAIN
- DITCH
- WETLAND
- POND

- 2640' BUFFER FROM WPS
- WORKING PAD SURFACE
- OIL & GAS LOCATION

- RULE 411.B GUDI & TYPE III WELLS - GENERALIZED INTERNAL BUFFER
- RULE 411.B GUDI & TYPE III WELLS - GENERALIZED INTERMEDIATE BUFFER
- RULE 411.B GUDI & TYPE III WELLS - GENERALIZED EXTERNAL BUFFER

PREPARED FOR:

