

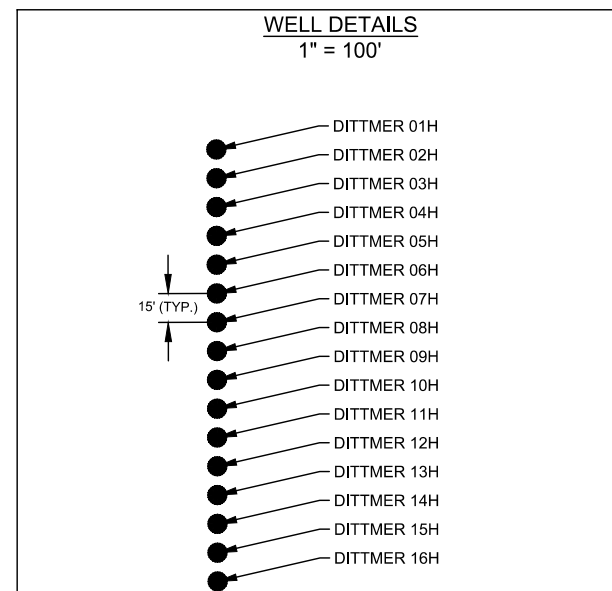
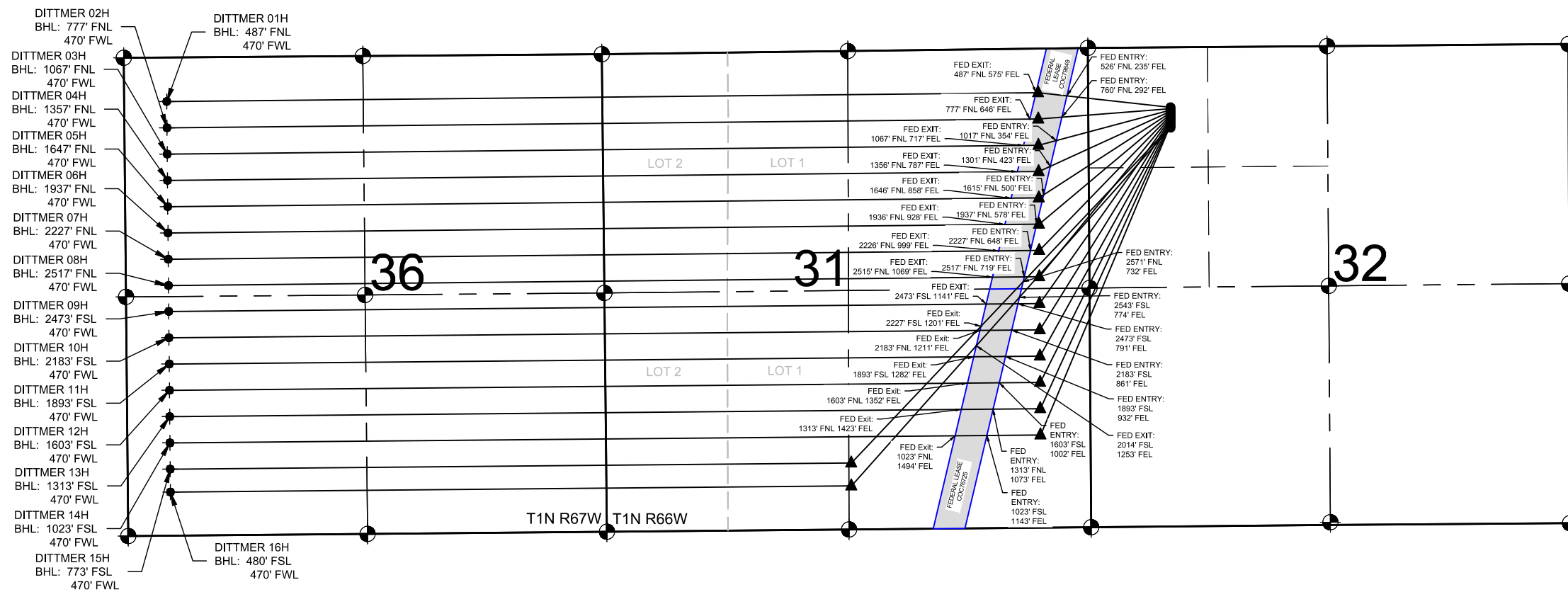
**DITTMER PAD
DIRECTIONAL WELL PLAT**

NOTES:








1. THIS FIELD SURVEY CONFORMS TO THE MINIMUM STANDARDS SET BY THE COGCC, RULE NO. 216
2. FIELD VERIFICATION OF MONUMENTS COMPLETED WITHIN 1 YEAR OF SIGNATURE DATE, UNLESS OTHERWISE NOTED.

NOTES:

DITTMER 01H TO BE AT 662' FNL & 907' FWL.
BOTTOM HOLE AT 487' FNL & 470' FWL, SEC. 36, T1N, R67W.
DITTMER 02H TO BE AT 677' FNL & 907' FWL.
BOTTOM HOLE AT 777' FNL & 470' FWL, SEC. 36, T1N, R67W.
DITTMER 03H TO BE AT 692' FNL & 907' FWL.
BOTTOM HOLE AT 1067' FNL & 470' FWL, SEC. 36, T1N, R67W.
DITTMER 04H TO BE AT 707' FNL & 907' FWL.
BOTTOM HOLE AT 1357' FNL & 470' FWL, SEC. 36, T1N, R67W.
DITTMER 05H TO BE AT 722' FNL & 907' FWL.
BOTTOM HOLE AT 1647' FNL & 470' FWL, SEC. 36, T1N, R67W.
DITTMER 06H TO BE AT 737' FNL & 907' FWL.
BOTTOM HOLE AT 1937' FNL & 470' FWL, SEC. 36, T1N, R67W.
DITTMER 07H TO BE AT 752' FNL & 907' FWL.
BOTTOM HOLE AT 2227' FNL & 470' FWL, SEC. 36, T1N, R67W.
DITTMER 08H TO BE AT 767' FNL & 907' FWL.
BOTTOM HOLE AT 2517' FNL & 470' FWL, SEC. 36, T1N, R67W.
DITTMER 09H TO BE AT 782' FNL & 907' FWL.
BOTTOM HOLE AT 2473' FSL & 470' FWL, SEC. 36, T1N, R67W.
DITTMER 10H TO BE AT 797' FNL & 907' FWL.
BOTTOM HOLE AT 2183' FSL & 470' FWL, SEC. 36, T1N, R67W.
DITTMER 11H TO BE AT 812' FNL & 906' FWL.
BOTTOM HOLE AT 1893' FSL & 470' FWL, SEC. 36, T1N, R67W.
DITTMER 12H TO BE AT 827' FNL & 906' FWL.
BOTTOM HOLE AT 1603' FSL & 470' FWL, SEC. 36, T1N, R67W.
DITTMER 13H TO BE AT 842' FNL & 906' FWL.
BOTTOM HOLE AT 1313' FSL & 470' FWL, SEC. 36, T1N, R67W.
DITTMER 14H TO BE AT 857' FNL & 906' FWL.
BOTTOM HOLE AT 1023' FSL & 470' FWL, SEC. 36, T1N, R67W.
DITTMER 15H TO BE AT 871' FNL & 906' FWL.
BOTTOM HOLE AT 733' FSL & 470' FWL, SEC. 36, T1N, R67W.
DITTMER 16H TO BE AT 886' FNL & 906' FWL.
BOTTOM HOLE AT 480' FSL & 470' FWL, SEC. 36, T1N, R67W.



LEGEND

-  = EXISTING MONUMENT  = LANDING POINT
 = CALCULATED POSITION  = EXISTING WELL
 = PROPOSED WELL BHL = BOTTOM HOLE
 = BOTTOM HOLE  = FEDERAL LEASE

FIELD DATE:
10-13-22

DRAWING DATE:
01-26-23

BY:
TRP

CHECKED:
NJH

WELL NAME:
DITTMER PAD

SURFACE LOCATION:
NW 1/4 NW 1/4 SEC. 32, T1N, R66W, 6TH P.M.
WELD COUNTY, COLORADO

PREPARED FOR:	
---------------	--

