



**RULE 304.E. SUBSTANTIALLY EQUIVALENT INFORMATION COVER SHEET**

**Dittmer Pad Oil and Gas Development Plan**

**Dittmer Pad: NWNW Section 32, Township 1 North, Range 66 West**

**Form 2A Doc #403185947**

**Weld County, Colorado**

The attached Site Safety and Emergency Action Plan is being submitted as a substantially equivalent document to the Emergency Response Plan required by COGCC Rule 424.a.

This document was developed for Weld County as part of the 1041WOGLA Application.

This document does not conform to COGCC rules or guidance in the following ways:

There are no active Public Water System administrators applicable to be listed as a contact in Section 4.

---

This document should be accepted as substantially equivalent:

The Emergency Response Plan (submitted as pages 91-110 of the 1041 WOGLA Application) is being reviewed by both Greater Brighton Fire Protection District and Weld County OEM. The Greater Brighton Fire Protection District is comprised of full-time employees. Operator will participate in annual training coordination with response agencies.

# **SITE SAFETY AND EMERGENCY ACTION PLAN**

## **Incline Operating, LLC**



**District Office**

**1528 Wazee Street**

**Denver, Colorado 80202**

**Dittmer Pad**

**NWNW Section 32, Township 1 North, Range 66 West**

**Address: TBD**

**WELD COUNTY, COLORADO**

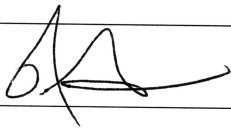
**Proposed Spud Date: 1<sup>st</sup> Quarter 2024**

## Table of Contents

SECTION 1 – APPROVAL SIGNATURES .....	1
SECTION 2 – SITE ADDRESS AND DIRECTIONS .....	2
a) Directions:.....	2
b) Ingress and egress information: .....	2
c) Physical Address and GPS coordinates .....	2
d) Emergency Evacuation/Muster Assembly point(s) .....	2
SECTION 3 – LIST OF EMERGENCY CONTACTS.....	3
a) Operator .....	3
b) Operator Community/Media Relations.....	3
c) First Responders (Fire, EMS, HazMat) .....	3
d) Local, State, and Federal Contacts.....	4
e) Medical Facilities ( <i>Nearest locations to site</i> ) .....	4
f) Spill Response Organization ( <i>Contracted</i> ) .....	4
g) Loss of Well Control.....	4
h) Railroad Emergency Response ( <i>if applicable</i> ).....	4
i) Mutual-Aid – .....	4
SECTION – 4 SITE SPECIFIC INFORMATION .....	5
a) Site Description.....	5
b) Nearby Schools, High Occupancy Buildings, Waterways.....	5
c) Site Safety Requirements and General Safety Information.....	5
d) Equipment List .....	6
e) Chemicals stored on-site (BBLs and Gallons).....	6
SECTION 5 – MAPS AND DRAWINGS .....	8
Project Area Map.....	8
Project Location Access Map and Muster Point.....	9
Haul Route Map.....	10
2,500’ Buffer Area Map .....	11
SECTION 6 – SPILL RESPONSE AND CLEAN-UP.....	12
a) Spill Response .....	12
b) Spill Reporting.....	12
a) Reportable Quantities .....	14
b. Reportable Requirements.....	14
SECTION 8 – EVACUATION INFORMATION.....	14
a. Evacuation Plan Procedures (public) .....	14
SECTION – 9 TRAINING AND EXERCISES .....	15
SECTION – 10 COORDINATION WITH FIRST RESPONDERS .....	15
SECTION – 11 Plan Review and Update Procedures.....	15

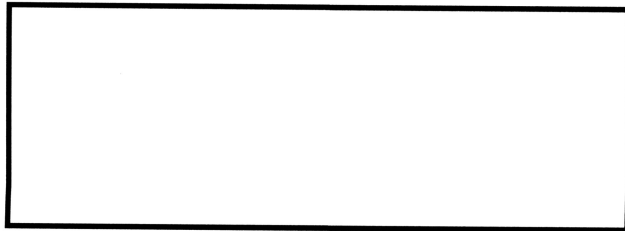
## **SECTION 1 – APPROVAL SIGNATURES**

**Instructions:** Company Representative to sign with concurrence review by local Fire District in alignment with COGCC FORM 2 A and Rule 602. J Emergency Response Plan, Guidance Plan Element 2.

Incline Operating, LLC			
Name	Signature	Title	Date
Julie Friday		Vice President, Development	2/27/23
Fire District			
Name	Signature	Title	Date

**Weld County Office of Emergency Management**

*Digitally Signed*



## **SECTION 2 – SITE ADDRESS AND DIRECTIONS**

**a) Directions:**

From the intersection of North Main Street (WCR 27) and New Energy Drive (WCR 4), head East on New Energy Drive for 3,080 feet to an existing access to the South. Head South on the existing access for 617 feet, thence West for 1,798 feet to the proposed pad and facility.

**b) Ingress and egress information:**

During the drilling and completion phases all traffic into and out of the Dittmer Pad will check-in and check-out with security. All ingress and egress routes will be clearly identified and kept clear from parked/staged vehicles at all times. During the production phase the site will be fenced on three sides. Earthen berming and topography will restrict access on the fourth side. No locked gates or chain link security fencing are anticipated at this site.

**c) Physical Address and GPS coordinates**

- **API#** – Pending COGCC Permit Approval
- **Legal Description** – NWNW Section 32, Township 1 North, Range 66 West
- **Address** - \* Address Pending (*Weld OEM will provide physical address for 911 dispatching*)
- **Town, CO, Zip** – Weld County, Colorado 80603
- **Lat/Long:** Lat: 40.013127°N      Long: 104.807137°W

**d) Emergency Evacuation/Muster Assembly point(s)**

For incidents where remaining in a particular area could pose a hazard to personnel onsite, such as a fire or hazardous material release, evacuation may be required to ensure the safety of onsite personnel. In the event of an emergency, site personnel will initially be evacuated to pre-designated muster assembly points.

- The Muster assembly points are identified on the Project Location Access Map and Muster Point exhibit as well as the site-specific TRP.
- The Muster assembly points will be identified during all site safety briefings for visitors, employees, and contract personnel.
- **Sign-In Sheets:** During drilling and completion activities all employees and approved visitors to the Dittmer Pad at NWNW Section 32, Township 1 North, Range 66 West will be required to enter through a manned security checkpoint. Upon checking in, employees and visitors will be provided a detailed safety briefing of current operations, all safety precautions that must be adhered to, and the site emergency evacuation plan. In addition, all personnel who enter the location must sign-out upon their departure. Security or Supervisory personnel are required to account for all persons entering or leaving during active operations and in the event of an incident.
- Once drilling and completion activities are finalized, the site will transition to its production phase and no unauthorized personnel will be allowed on location without first contacting a company representative.

### **SECTION 3 – LIST OF EMERGENCY CONTACTS**

**a) Operator**

<b>Name</b>	<b>Office Phone</b>	<b>Emergency/Cell</b>
William Francis 4645 N Central Expy S, Dallas, TX 75205	214-274-3800	214-274-3800
Julie Friday 1528 Wazee Denver, CO 80202	720-534-0834	432-528-4702
Incline EHS on-call emergency number William Francis	214-274-3800	214-274-3800
EHS Supervisor Julie Friday	720-534-0834	432-528-4702
EHS – Safety Julie Friday	720-534-0834	432-528-4702
EHS – Environmental Julie Friday	720-534-0834	432-528-4702

**b) Operator Community/Media Relations**

<b>Name</b>	<b>Office Phone</b>	<b>Cell Phone</b>
Julie Friday	720-534-0834	432-528-4702

**c) First Responders (Fire, EMS, HazMat)**

<b>Name</b>	<b>Emergency Number</b>	<b>Non-Emergency Number</b>
<b>*All emergency notifications require notification to 911 first</b>		
Brighton Police Department	911	303-228-1535
Greater Brighton Fire Protection District	911	303-228-1535
Platte Valley Ambulance Service	911	720-685-8420
Weld County Sheriff	911	970-356-4015
Colorado State Highway Patrol	911	970-506-4999

**d) Local, State, and Federal Contacts**

Name	Emergency Number	Non-Emergency Number
Weld County Oil and Gas Energy Department	None	970-400-3580
Weld County Office of Emergency Management	911	970-304-6540
COGCC	None	303-894-2100
CDPHE	None	877-518-5608
Colorado Parks & Wildlife	None	303-291-7227
National Response Center	800-424-8802	none

**e) Medical Facilities (Nearest locations to site)**

Name	Office Phone
Northern Colorado Medical Center	970-352-4121
Platte Valley Medical Center	303-498-1600
Good Samaritan Hospital	303-689-4000

**f) Spill Response Organization (Contracted)**

Name	24/7 Emergency Number	Non-Emergency Number
Clean Harbors	800-645-8265	n/a
Custom Environmental	303-423-9949	n/a

**g) Loss of Well Control**

Name	24/7 Emergency Number	Non-Emergency Number
Greater Brighton Fire Protection District	911	303-228-1535
Wild Well Control, Inc.	281-784-4700	281-353-5481
Northern Colorado Medical Facility (Burn Unit)	970-810-6075	970-810-4121
Weld County Office of Emergency Management (Roy Rudisill)	970-304-6540	800-436-9276x3809

**h) Railroad Emergency Response (if applicable)**

Name	24/7 Emergency Number
Union Pacific Railroad	888-877-7267

**i) Mutual-Aid –**

All mutual-aid coordination within Weld County will be in accordance with the current Weld County Fire Chiefs Association Mutual-Aid Agreement. In addition, due to the size of Weld County and the large number of Fire Departments that make up the Weld County Fire Chiefs Association's, Mutual-Aid may be a mixture of full-time, combination, and volunteer FD resources responding to an incident at the Dittmer Pad located at NWNW Section 32, Township 1 North, Range 66 West.

## **SECTION – 4 SITE SPECIFIC INFORMATION**

### **a) Site Description**

The Dittmer Pad, located at NWNW Section 32, Township 1 North, Range 66 West, is an Incline Operating, LLC oil and gas production facility that will have sixteen (16) horizontal oil and gas wells along with twelve (12) 15.5' D x 16' H nominal 536-barrel (22,500 gallon) crude oil storage tanks and four (4) 15.5' D x 16' H nominal 536 barrel (22,500 gallon) produced water tanks located inside a lined secondary containment structure.

As part of the Weld County 1041 WOGLA permit process, the following sections of County Code address site layout, site drawings, and identify any sensitive areas and discuss any mitigation measures needed.

- Sec. 21-5-312 – Comprehensive Development Plans (CDPs)
- Section 21-5-320 – Application requirements for 1041 WOGLA Permit

### **b) Nearby Schools, High Occupancy Buildings, Waterways**

- Schools - None within 2500' of location.
- High Occupancy Buildings - None within 2500' of location.
- Waterways – There is an unnamed ditch 17' W of the location.

### **c) Site Safety Requirements and General Safety Information**

The minimum personal protective equipment (PPE) to enter any Incline Operating, LLC production location includes hard hat, safety glasses, safety toe boots, fire resistant clothing (FRC), and a 4-gas monitor. All contractors and visitors are responsible for providing their employees with the appropriate training on and use of PPE while on Incline Operating, LLC locations. In addition, all contract personnel entering an Incline Operating, LLC location to perform work must understand and abide by Incline Operating, LLC's contractor expectations relating to environmental, health, and safety requirements.

The primary hazards that any person must be aware of while on an Incline Operating, LLC production location include, but are not limited to, the potential for release of hydrocarbon gases and/or liquids from production equipment/tanks, heavy truck and equipment traffic, loud noise, high pressures, and the potential for a flash fire. These hazards can vary depending on the work being performed.

- **SDS:** Depending on the operations taking place on location, chemicals stored on-site may vary. In accordance with 49 CFR 1910.1200, Safety Data Sheets (SDS) will be made available for site personnel performing work and for first responders in a centralized location onsite.



**d) Equipment List**

Item Description	Quantity
Horizontal oil and gas wells	16
536-barrel crude oil storage tank	12
536-barrel produced water	4
Horizontal Separators	16
Bulk Oil Separator	1
VRT	2
ECD	2
Gas Lift Compressor	1
LACT	1
Instrument Air Skid	1
Meter Skid	2
Knockout	1
VRU	2
Minion Tank	2
Combustor (temporary – flowback phase)	1

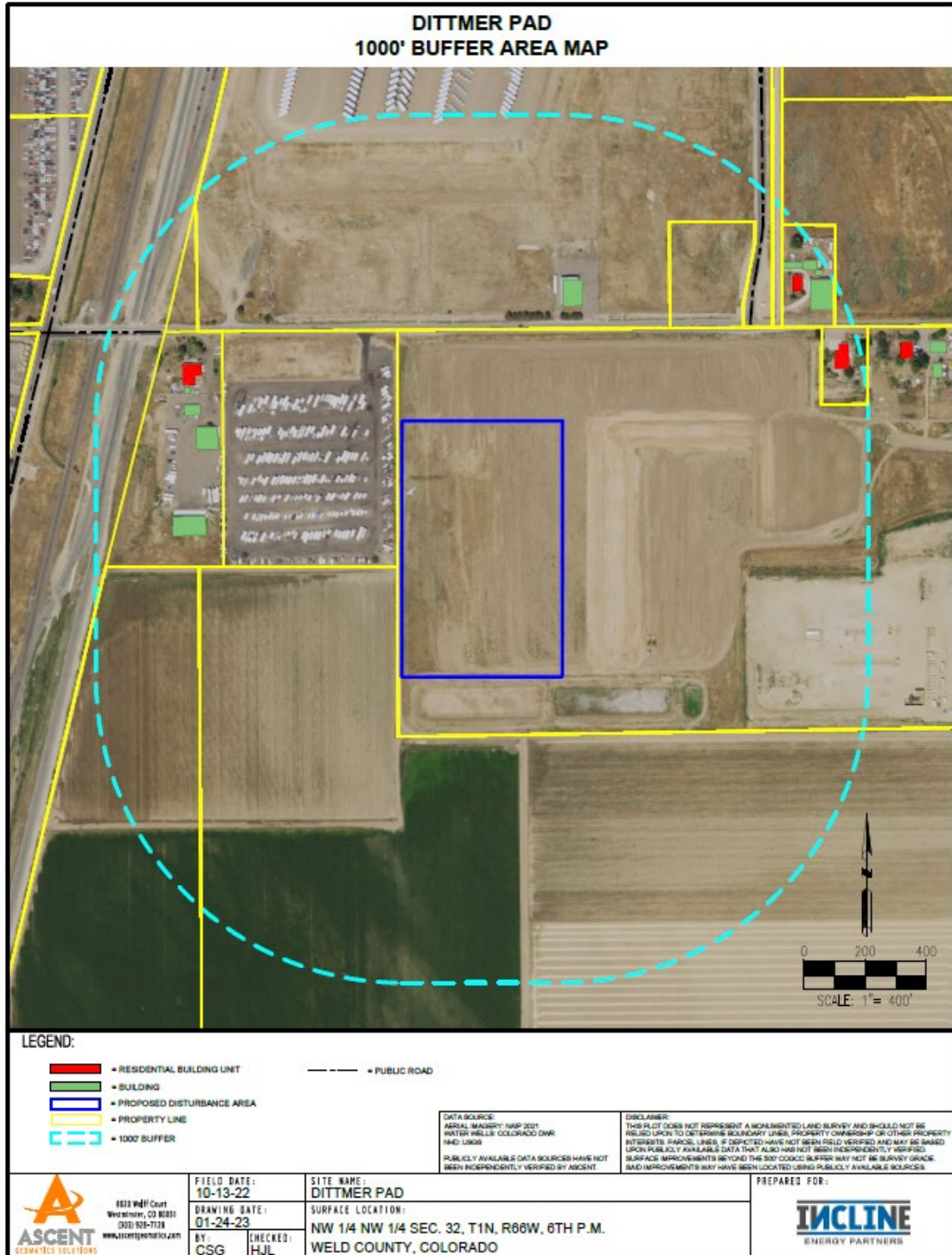
**e) Chemicals stored on-site (BBLs and Gallons)**

<b>Drilling</b>	Diesel Fuel	300 BBLs x 1 Tank
	OBM make up fluid	400 BBLs x 2 Tanks
	OBM	370 BBLs x 6 Tanks
	Water	400 BBLs x 5 Tanks
	OBM Active system	375 BBLs x 3 Tanks
	Rig motor oils/lubricants/hydraulic oil	200 gal x 3 Tanks
	Cement Silo	750 sx x 3 silos
	Bulk Bar	Bar

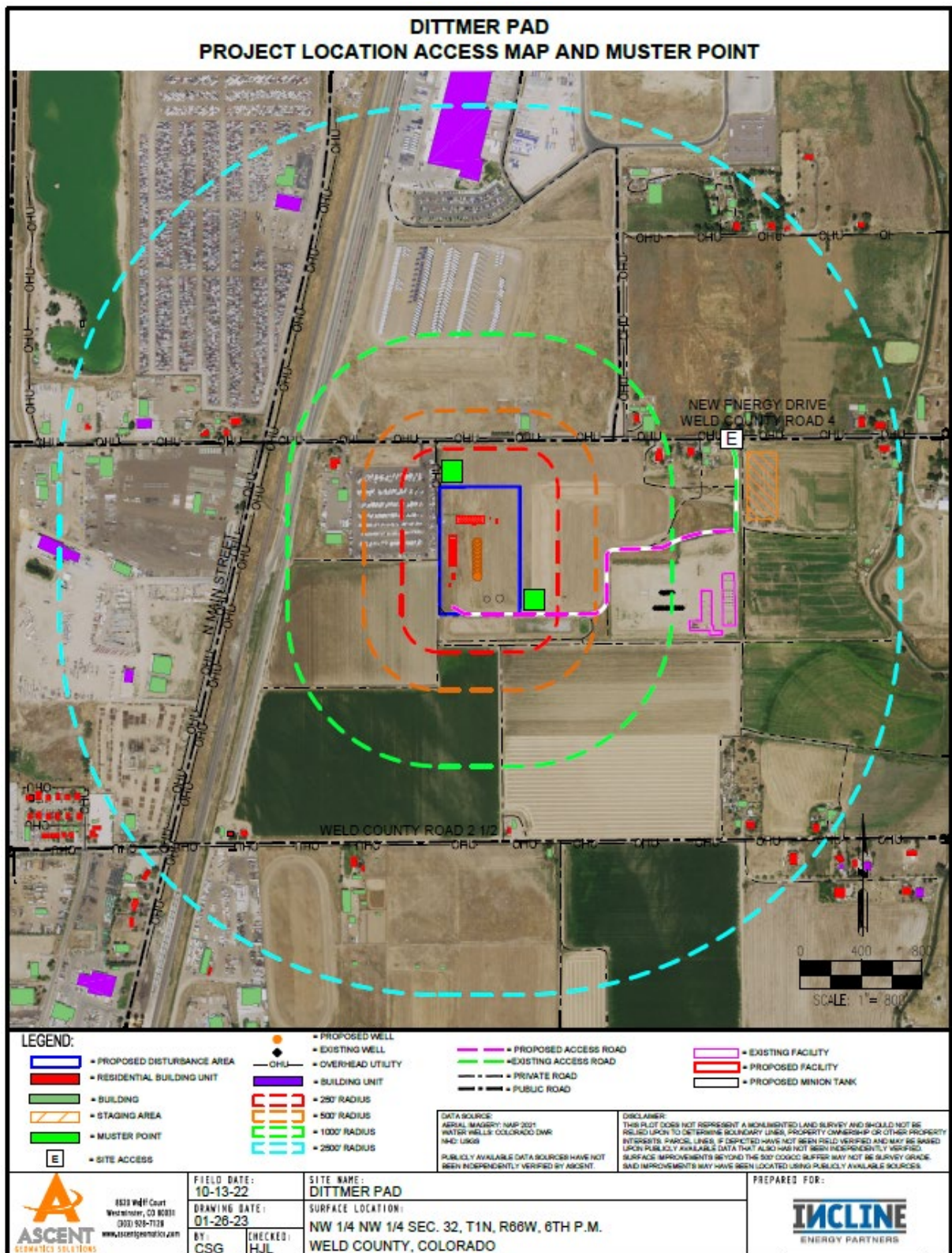
		21,000 lbs x 1 Tank
	Drilling Mud Dry Storage Conex	300 sx x 2 conexes
<b>Completions</b>	Diesel Fuel	400 bbls x 1 Tank
	Friction Reducer	160 BBLs x 13 Tanks
	Biocide	20 BBLs x 2 Tanks
	Grease	9 BBLs x 18 Tanks
	Bleach	20 BBLs x 2 Tanks
	Motor Oil	20 BBLs x 20 Tanks
	Coolant	2 BBLs x 2 Tanks
	DEF	83 BBLs x 16 Tanks
<b>Flowback</b>	Crude Oil	536 BBLs x 2 Tanks
	Produced Water	536 BBLs x 6 Tanks
<b>Production</b>	Crude Oil	536 BBLs x 12 Tanks
	Produced Water	536 BBLs x 4 Tanks

## SECTION 5 – MAPS AND DRAWINGS

### Project Area Map 1,000' Buffer

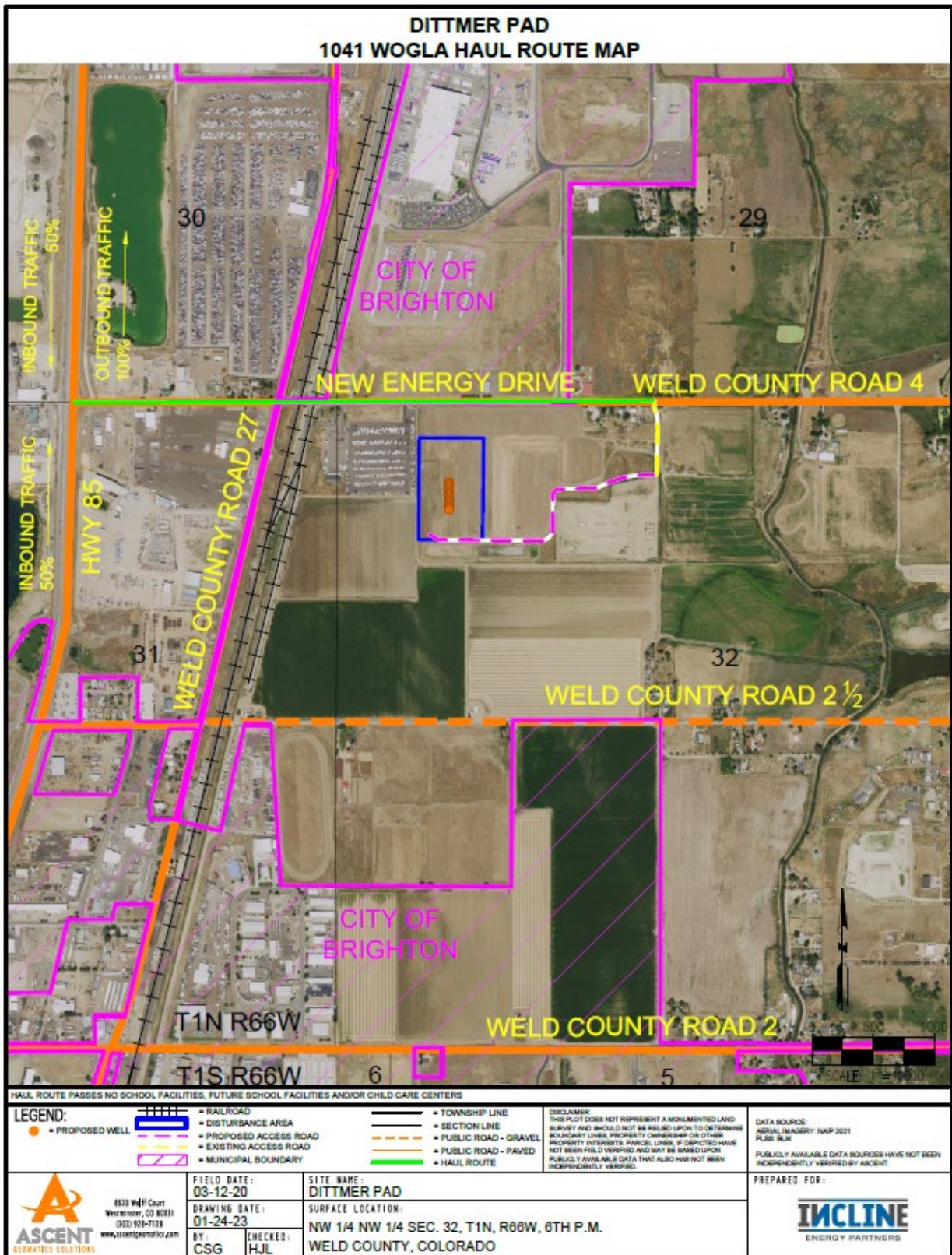


## Project Location Access Map and Muster Point



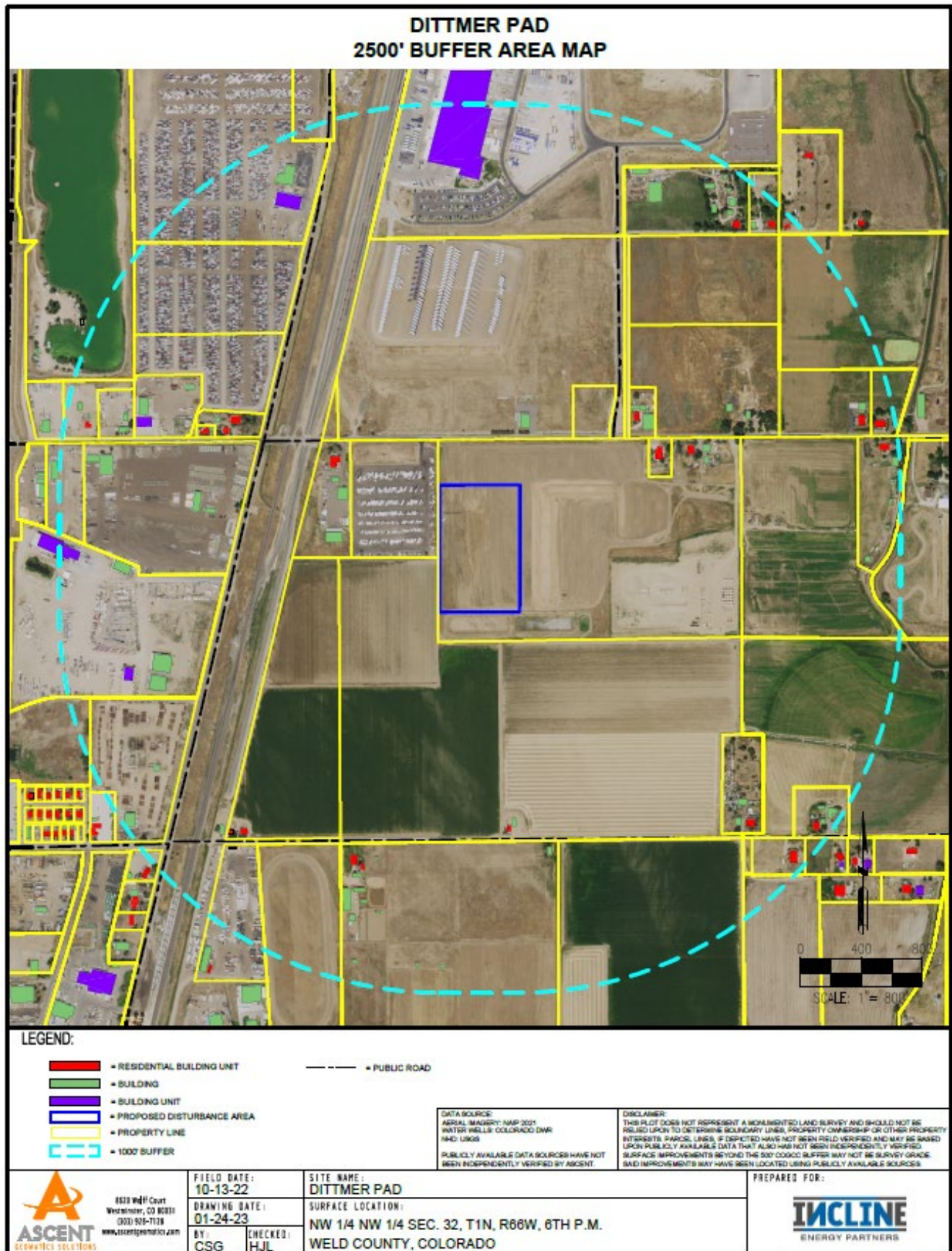


## Haul Route Map





## 2,500' Buffer Area Map



## **SECTION 6 – SPILL RESPONSE AND CLEAN-UP**

### **a) Spill Response**

There are multiple types of hydrocarbons and or chemicals stored or processed onsite which can be released/spilled during oil and gas production and exploration. Most commonly released are unrefined products such as crude oil and produced water. Refined petroleum products such as diesel, gasoline, produced oils, and motor oil spills are less common, but still equally important to mitigate. If a spill is discovered, it will be mitigated in accordance with Colorado Oil and Gas Conservation Commission (COGCC), Colorado Department of Public Health and Environment (CDPHE), and Weld County LEPC requirements.

Once a release has been discovered, it will be immediately stopped and contained if possible and safe to do so. When containing a spill; a combination of sorbent rolls, pads, mats, socks, or containment boom may be deployed, or earthen berms will be constructed around the release to keep spilled material contained and from spreading. These materials will be provided by Incline Operating, LLC and the contract spill response company and kept on-site during all construction phases. During a spill, efforts will be made to minimize contact with live vegetation, nearby drainage ditches, rivers, creeks, or streams. If the release is outside of secondary containment or poses a threat to flow off site, or impact environmentally sensitive areas, the spill response contractor will be notified for cleanup assistance, if needed, and for removal and disposal of spilled materials and contaminated areas.

In the event of a large incident requiring outside assistance/cascading resources, Incline Operating, LLC has contracted with Custom Environmental. Custom Environmental possesses a working knowledge of oil and gas operations, emergency response and the Incident Command System (ICS). Once notified, Custom Environmental personnel can be on location within 12 hours.

### **b) Spill Reporting**

The person reporting a spill will be required to supply the minimum spill assessment information to provide as a complete understanding of the incident as possible to local, state, or federal agencies if applicable. Some initial spill response actions and information that may be reported are presented below:

- A spill/release will be reported to the COGCC if released material is property of Incline Operating, LLC and meets the COGCC reporting thresholds (see below), an example would be crude oil released from a separator or produced water from a water vault.
- A spill/release will be reported to the Weld County LEPC if released material is property of Incline Operating, LLC and meets the COGCC reporting thresholds (see below) Mandated by Section 304 of the Emergency Planning and Community Right-To-Know Act (EPCRA).
- A spill/release will be reported to the CDPHE if released material is in the custody of a third party for spills meeting CDPHE reporting thresholds or are of any size that impact or threaten to impact waters of the state, a residence or occupied structure, livestock or public byway. An example would be an oil hauler over filling a truck and spills product onto the ground next to a flowing irrigation ditch.
- Spills are reportable to the COGCC and/or to Weld County LEPC in the following circumstances:
  - A. the spill or release impacts or threatens to impact any waters of the state, a residence or occupied structure, livestock or a public byway;
  - B. a spill or release in which 1 barrel or more is released outside of berms or other secondary containment;
  - C. or any spill or release of 5 barrels or more.

If the spill impacts or threatens to impact waters of the state (which include surface water, ground water and

dry gullies or storm sewers leading to surface water), it must also be reported immediately to CDPHE (25-8-601 CRS) and the National Response Center. Once a spill is determined reportable, there is a 24-hour deadline to make initial notification to the COGCC/LEPC or CDPHE depending on the product ownership. Spills/releases in the custody of Incline Operating, LLC will be reported by a Company representative. Spills/releases in the custody of a third party will be reported by the responsible company's EHS Department to the appropriate agency and to Incline Operating, LLC.

These regulatory guidelines will be strictly followed by Incline Operating, LLC and any contractors operating under Incline Operating, LLC guidance during all activities at the Dittmer Pad located at NWNW Section 32, Township 1 North, Range 66 West.



## **SECTION 7 – REPORTABLE QUANTITIES**

### **a) Reportable Quantities**

No Reportable Quantities of any chemicals on the EPA's List of Lists will be stored in discrete amounts at the Dittmer Pad. However Methane, Ethane, Propane, Butane, and other hydrocarbons are on the List of Lists and are known to be present in crude oil, natural gas and diesel fuel, all of which will be stored or processed at the Dittmer Pad. Mandated by Section 312 of the Emergency Planning and Community Right-To-Know Act (EPCRA) – also known as SARA Title III – the Tier II form captures information about the types, quantities, and locations of hazardous chemicals at a given facility. The form also lists contact information for the facility's designated emergency point-of-contact.

- Any facility that is required to maintain MSDSs (or SDSs) under the Occupational Safety and Health Administration (OSHA) 49 CFR 1910.1200 regulations for hazardous chemicals stored or used in the workplace.
- Facilities with chemicals in quantities that equal or exceed the lists of lists thresholds must report.
- Propane, benzene, propane and methane are on the lists of lists and are known to be in crude oil. In addition, diesel is on the lists of lists and may be stored on oil and gas sites during construction and development.

### **b. Reportable Requirements**

Incline Operating will submit a Tier II report for the Dittmer Pad to the State of Colorado every year before March 1<sup>st</sup> per the requirements of 40 CFR Part 370.

These regulatory requirements will be strictly followed by Incline Operating, LLC and any contractors operating under Incline Operating, LLC during all activities at the Dittmer Pad located at NWNW Section 32, Township 1 North, Range 66 West.

## **SECTION 8 – EVACUATION INFORMATION**

### **a. Evacuation Plan Procedures (public)**

The procedure to be used in alerting the public in the event of than incident which could pose a threat to life or property will be arranged and coordinated with first responders and Weld County Emergency Management.

In the event of an actual emergency, the following steps will be immediately taken:

1. The Incline Operating, LLC representative will immediately notify first responders (911), to warn the public of a potential chemical exposure.
2. First responders may conduct door to door evacuation notices in addition to reverse 911 and utilizing the Integrated Public Alert and Warning System (IPAWS).
3. The Incline Operating, LLC representatives responsible for employees and contract personnel will monitor essential and non-essential personnel traffic on or near the incident site.
4. General:
  - a. The area inside the perimeter fencing is considered to be the zone with the maximum potential hazard. When it is determined that conditions exist which create an additional area (outside the perimeter fencing) vulnerable to possible hazard, public areas in the additional hazardous area will be evacuated.
  - b. In the event of an incident, after the public areas have been evacuated and traffic stopped, it is expected that local civil authorities will have arrived and within a few hours will have assumed direction of and control of the public, including all public areas.
  - c. Incline Operating, LLC will dispatch appropriate personnel to the site as soon as possible. These

personnel will cooperate with the civil authorities to the fullest extent possible and will make every attempt to supply accurate facility information and give advice to authorities to help deal with the incident, control rumors and prevent the spread of social media misinformation.

- d. Incline Operating, LLC will dispatch appropriate personnel to the disaster site as soon as possible. The company's personnel will cooperate with and provide such information to civil authorities as they might require.

## **SECTION – 9 TRAINING AND EXERCISES**

The National Incident Management System (NIMS) guides all levels of government, nongovernmental organizations and the private sector to work together to prevent, protect against, mitigate, respond to and recover from incidents.

NIMS provides stakeholders across the whole community with the shared vocabulary, systems and processes to successfully deliver the capabilities described in the National Preparedness System. NIMS defines operational systems that guide how personnel work together during incidents.

Incline Operating, LLC plays a vital role in the Incident Management System. Incline Operating, LLC has a significant impact on local, regional, and national economic recovery, and is part of the whole community and essential to the function of the Community Lifelines.

To maximize Incline Operating, LLC's impact and willingness to participate in incident operations, Incline Operating, LLC will coordinate and integrate with first responders into a Unified Command (UC)—including planning, training, and preparedness exercises. Incline Operating, LLC commits to enroll its employees who will respond to an incident in ICS 100, ICS 200, and ICS 700 training, at a minimum, to facilitate company and agency emergency response interoperability.

Exercises are an important component to test an organization's response readiness, training and familiarity with various emergency response scenarios, participation and engagement with local and or state agencies, and to develop lessons learned to improve emergency response capabilities. Incline Energy, LLC commits to design and schedule regular site visits and exercises with first responder agencies. Incline will conduct annual emergency response exercises and coordinate periodic drills on location with first responders and local government officials.

## **SECTION – 10 COORDINATION WITH FIRST RESPONDERS**

- a) Incline Operating, LLC will communicate rig up, spud, completion and start of production dates to the Weld County Office of Emergency Management for coordination/communication with local first responders. These start dates will be provided a prior to commencement or change in oil and gas development operations.
- b) In the event of an emergency requiring First Responders, Unified Command will be established between the Incline Operating, LLC appointed company man on location and First Responders present. A Unified Command post will be established based on conditions present at time of incident.
- c) Incline Operating, LLC's EHS representative and First Responders identified in this Emergency Action Plan and Tactical Response Plan have reviewed both documents and have discussed coordination efforts in the event of an emergency situation requiring First Responder assistance.
- d) **Industry Mutual-Aid:** Energy companies operating in Weld County are encouraged to be members of the Colorado Preparedness Response Network (CPRN), to support mutual-aid collaboration between industry and public emergency response organizations to achieve a coordinated and effective response to an all-hazards event.

## **SECTION – 11 Plan Review and Update Procedures**

- a) Multi-year plan review and update:  
Incline Operating, LLC will update this plan or incorporate this location into an area-wide plan and update the plan every five (5) years or after a change in personnel, operations or ownership.
- b) Post-incident plan review and update:
  - c) Incline Operating, LLC will update this plan after a spill/release or incident in order to evaluate and record the plan's effectiveness.



## DITTMER PAD

ADDRESS:

PAD LOCATION: 40.013127 °N, 104.807137 °W

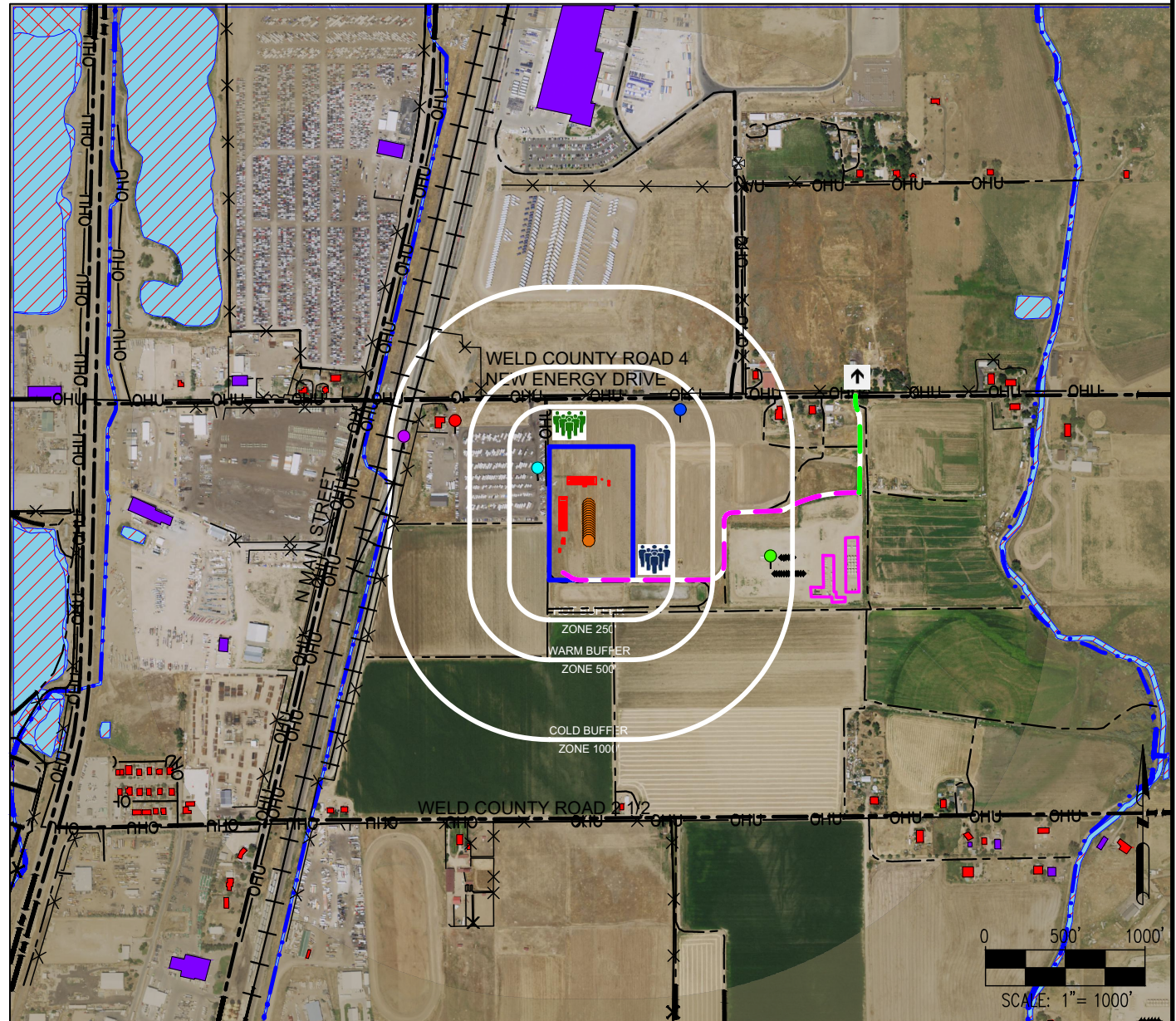
ACCESS LOCATION: 40.014967 °N, 104.801145 °W

### NOTIFICATIONS

1. Incline Energy Partners 24-Hour Hotline  
432-528-4702  
720-467-1744
2. Brighton Police Department:  
911 AND 303-288-1535 (NON-EMERGENCY)
3. Greater Brighton Fire Protection District  
911 & 303-288-1535 (NON-EMERGENCY)
4. Weld County OEM  
970-350-9600
5. Weld County Sheriff  
970-356-4015
6. Colorado Highway State Patrol  
303-239-4501
7. Weld County O&G Energy Department  
970-400-3580
8. Colorado Oil & Gas Commission  
303-894-2100
9. Colorado Department of Public Health & Environment  
877-518-5608
10. Colorado Parks & Wildlife  
303-291-7227
11. National Response Center  
800-424-8802

### CRITICAL RECEPTORS

1. SURROUNDING RESIDENCES
2. EXISTING WELLS
3. WELD COUNTY ROAD 4
4. OVERHEAD UTILITY
5. EXISTING RAILROAD



SITE NAME:  
DITTMER PAD  
SURFACE LOCATION:  
NW 1/4 NW 1/4 SEC. 32, T1N, R66W, 6TH P.M.  
WELD COUNTY, COLORADO

### LEGEND

- = PRIMARY MUSTER POINT
- = SECONDARY MUSTER POINT
- = PRIMARY INGRESS/EGRESS
- = PROPOSED WELL
- = CRITICAL RECEPTOR

- = FLOODPLAIN
- = PROPOSED DISTURBANCE AREA
- = PROPOSED FACILITIES
- = RESIDENTIAL BUILDING UNIT
- = HOT, WARM, & COLD BUFFER ZONES
- = ERG ZONE (800 METERS)
- = EXISTING FACILITY
- = PROPOSED FACILITY
- = WETLAND

- = FENCE
- = PROPOSED ACCESS ROAD
- = OVERHEAD UTILITY
- = DITCH
- = EXISTING ACCESS ROAD
- = PRIVATE ROAD
- = PUBLIC ROAD
- = RAILROAD

Note: This Tactical Response Card is a reference tool and is intended to provide guidance during an actual event or exercise. Placement of resources may need to be adjusted according to environmental variables. It is the responsibility of emergency response personnel to be trained in response and to be able to make adjustments to the card as needed.

DATA SOURCES:  
AERIAL IMAGERY: NAIP 2021  
HYDROLOGY: NHD

PUBLICLY AVAILABLE DATA SOURCES HAVE NOT BEEN INDEPENDENTLY VERIFIED BY ASCENT.



FIELD DATE:  
10-13-22

DRAWING DATE:  
01-26-23

BY:  
CSG

CHECKED BY:  
HJL



## FIRE DEPARTMENT RESPONSE GUIDELINES

### COMMAND

- Establish initial command post near the oil & gas location entrance.
- Position should provide a clear view of the entire scene.
- Advise responding units and resources to stage near location entrance.
- Locate operator lease sign on location (located at the entrance /site access).
- If industry personnel are not on location, call the 24-Hour Emergency Contact number located on the sign.
- Establish unified command with operator on-site liaison.
- Develop incident action plan with the operator to mitigate incident
- **Strategy - Always defensive unless a life safety need is identified!**

### INCIDENT STABILIZATION

- Implement Hazardous Materials response protocols.
- All personnel operating in hazard zones should be in appropriate PPE, to include a personal mobile air monitoring device.
- Establish Hot, Warm, Cold Zones, and ERG zones.
- Exposure Concerns --- Equipment, nearby structures, neighborhoods, roadways, etc.
- Monitor weather conditions, especially wind direction.
- Air monitoring for vulnerable areas and locations around incident.
- Conduct evacuations of citizens, bystanders, and resources at risk.
- Identify and address any water supply and/or foam requirements necessary to mitigate the incident.

### SPECIAL CONSIDERATIONS

- If evacuations are needed, coordinate with Weld County OEM before ordering an evacuation to establish evacuation routes, shelters, shelter in-place and to utilize IPAWS (reverse 9-1-1).
- Request mutual aid apparatus and equipment asap to minimize operational delays.
- Consider and address any potential impacts to critical receptors identified near the location.
- Consider requesting a HazMat Team if needed to assist with mitigation.
- Consider requiring a fire investigation for any fire and/or explosion.
- Keep the public and stakeholders informed of response activities.
- Notify FAA if Air Traffic restrictions are needed (requested through OEM) **(very large incident)**

## INDUSTRY RESPONSE OBJECTIVES

Ensure safety of the public, first responders, employees, and contractors. Minimize impact to the environment and local community. The following response objectives checklist shall be followed:

### SAFETY - PROTECT LIFE

- Evaluate and account for all personnel
- Isolate all potential ignition sources
- Establish site control (safe perimeter and evacuation routes)
- Contact emergency services as needed (911, Fire, LEPC)
- Identify hazard(s) of emitted material (obtain SDS)
- Implement air monitoring around impacted area
- Continually assess site hazards/risks

### RESPONSE - INCIDENT STABILIZATION

- Notify internal personnel and agencies
- Assign on-site liaison to the incident commander
- Establish a unified command post and field communications
- Establish Hot, Warm, Cold Zones, and ERG Zone
- Identify and establish staging area to support response operations
- Activate emergency shutdown procedures (ESD)
- Activate response action contractors for equipment and manpower as needed (e.g. Well Control, spill/HazMat clean-up, etc.)

### ENVIRONMENTAL - PROTECT THE ENVIRONMENT

- Identify, prioritize, and protect environmentally sensitive areas
- Verify if water has been impacted
- Implement waste handling, disposal and decontamination procedures as needed
- Contain and recover spilled materials
- Notify appropriate agencies

### SPECIAL CONSIDERATIONS

- Keep the public and stakeholders informed of response activities

## FACILITY INFORMATION

### Well Pad Liquid Storage:

- Oil (BBL) - 6,432 BBL
- Water (BBL) - 2,144 BBL
- \*1 Barrel (BBL) = 42 Gallons

### Specific Facility Hazardous Conditions: (chemicals stored on site)

Drilling	OBM	370 BBLs x 6 Tanks
	Diesel	300 BBLs x 1 Tank
	Other	SEE EAP
Storage Location		
• Drill Pad		
•		
•		
Completions	Diesel	400 BBLs x 1 Tank
	Other	SEE EAP
Storage Location		
• Frac Pad		
•		
•		
Flowback	Crude Oil	536 BBLs x 2 Tanks
	Produced Water	536 BBLs x 6 Tanks
Storage Location		
• Tanks		
•		
•		
Production	Crude Oil	536 BBLs x 12 Tanks
	Produced Water	536 BBLs x 4 Tanks
Storage Location		
• Tanks		
•		
•		

### Is Water Supply Available on Location?

FIRE HYDRANTS
No
WATER STORAGE TANKS
No