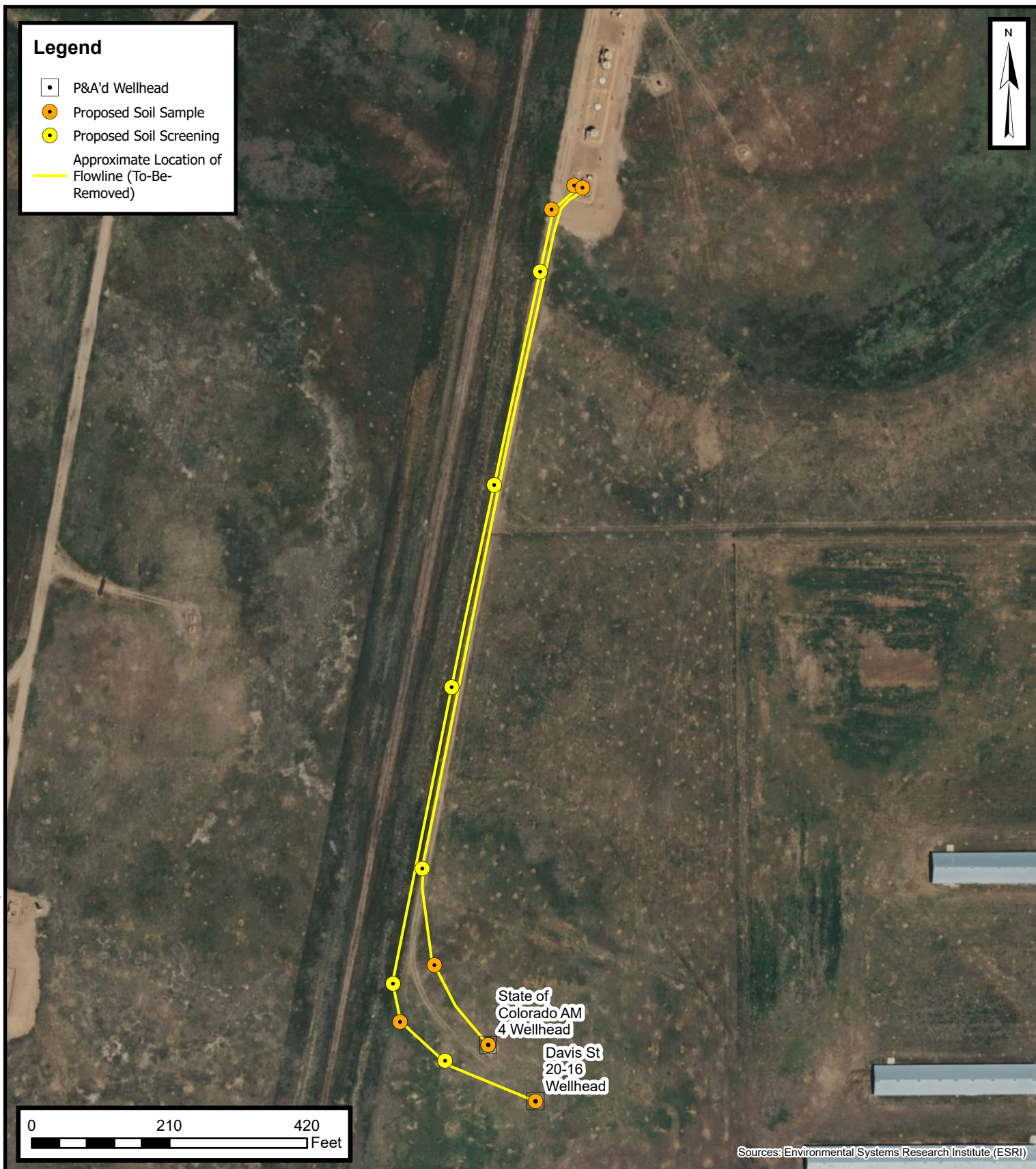


Default Folder: C:\Users\Owner\OneDrive - ENSOLUM, LLC\Ensolium GIS\ - Projects\Kerr-McGee Oil & Gas Onshore, LP\09A1417519 - Davis St 20-16 & St of Colo AM 4 Wellheads



Proposed Flowline Excavation and Soil Sampling Locations Map

Davis St 20-16 & St of Colo AM 4 Flowlines
Kerr-McGee Oil & Gas Onshore, LP
SWSE SEC 16-T3N-R67W NWSE SEC 16-T3N-R67W
Weld County, CO

Project Number: 09A1417519