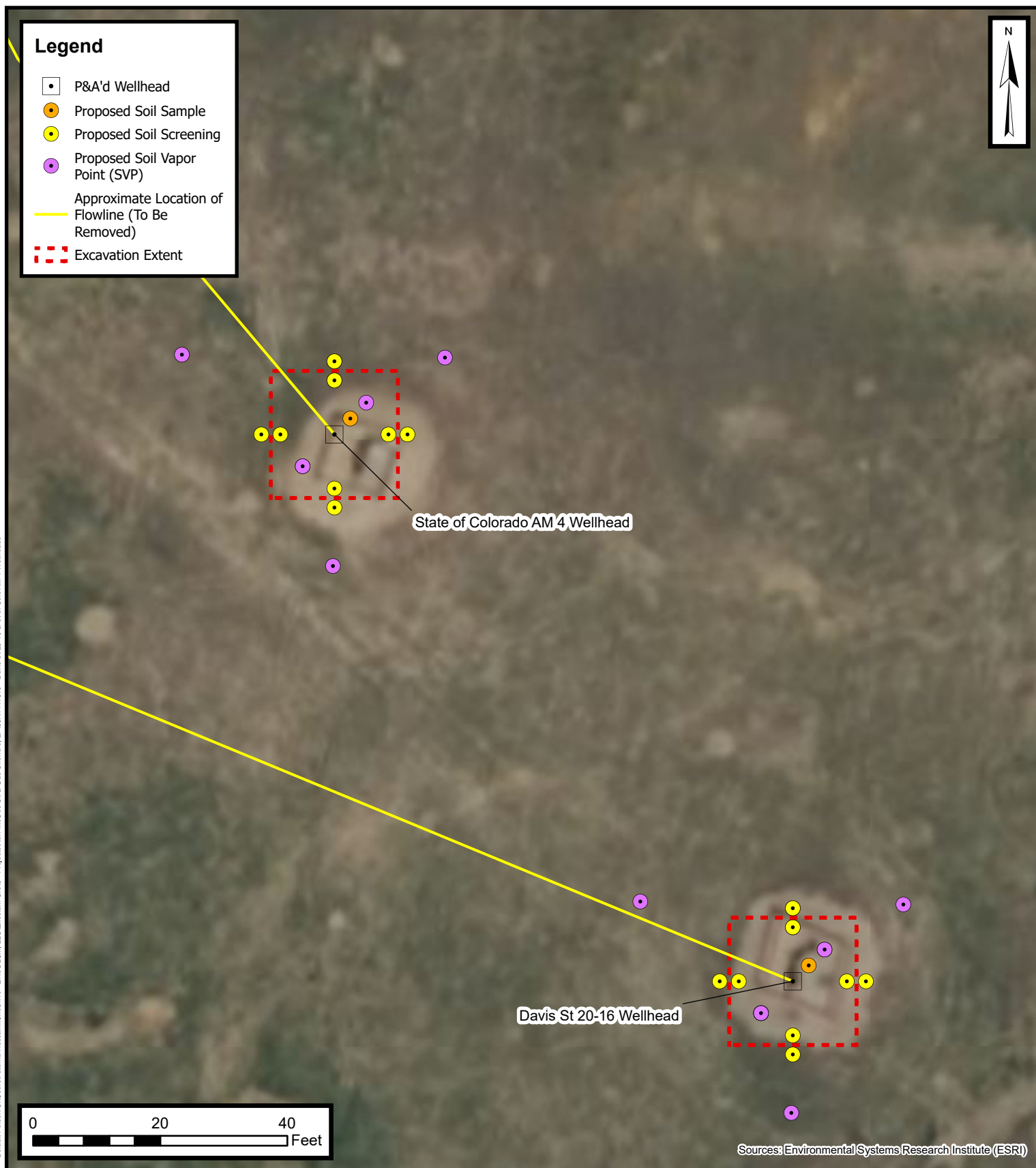


Default Folder: C:\Users\Falema Husain\OneDrive - ENSOLUM, LLC\Ensolum GIS\0 - Projects\Kerr-McGee Oil & Gas Onshore, LP\09A1417519 - Davis St 20-16 & St of Colo AM 4 Wellheads



## Proposed Wellhead Excavation and Soil Sampling Locations Map

Davis St 20-16 & St of Colo AM 4 Wellheads  
Kerr-McGee Oil & Gas Onshore, LP  
SWSE SEC 16-T3N-R67W NWSE SEC 16-T3N-R67W  
Weld County, CO

Project Number: 09A1417519