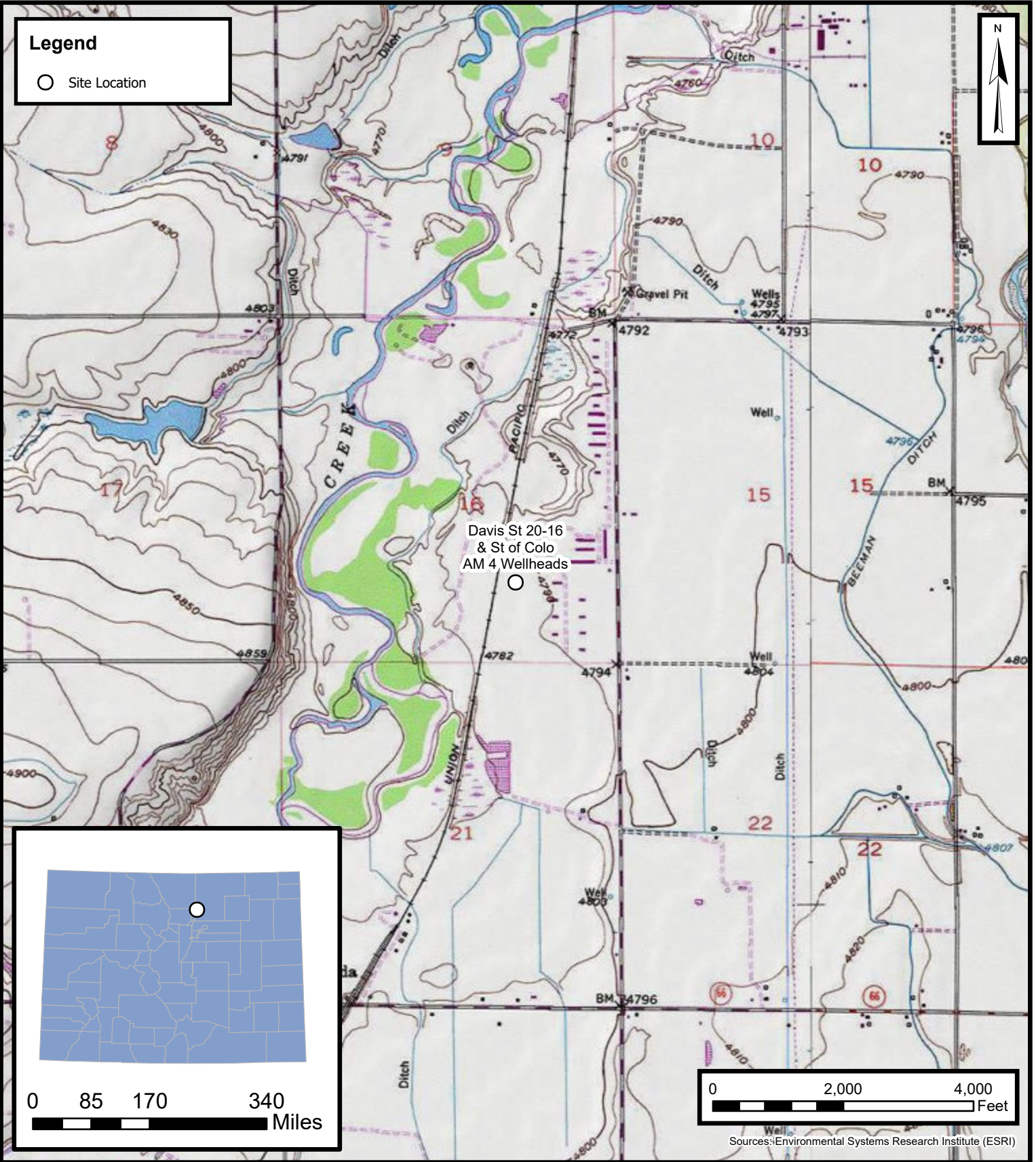
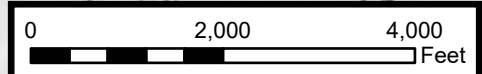
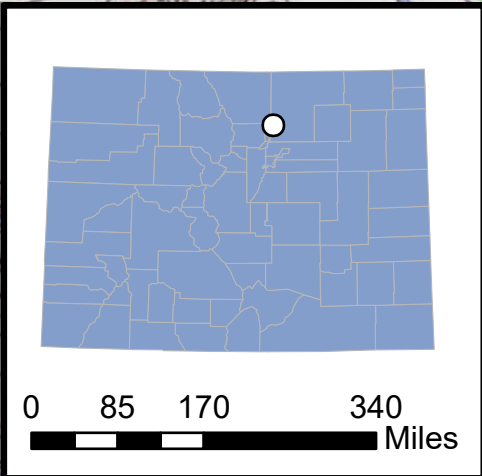


Legend

- Site Location



Davis St 20-16
& St of Colo
AM 4 Wellheads



Sources: Environmental Systems Research Institute (ESRI)

Default Folder: C:\Users\jst\OneDrive - ENSOLUM, LLC\ENSOLUM GIS\0 - Project\Kerr-McGee Oil & Gas Onshore, LP\09A1417519 - Presiding Bish Un 1 Wellhead



Site Location Map

Davis St 20-16 & St of Colo AM 4 Wellheads
Kerr-McGee Oil & Gas Onshore, LP
SWSE SEC 16-T3N-R67W NWSE SEC 16-T3N-R67W
Weld County, CO

Project Number: 09A1417519

FIGURE

1