
INTERIM RECLAMATION PLAN

BNL | ENTERPRISE

Bolling 04 SESW 2960

Sec. 4 T29S R60W (SE/4 SW/4)

Las Animas County, Colorado

Surface: Fee

Submitted as an accompaniment to the Form 2A Application and
Consistent with the requirements of Rule 1003.

May 17, 2023

BNL (Enterprise) Inc. Las Animas County, Colorado

Interim Reclamation Plan

Project Summary:

BNL (Enterprise) Inc.'s ("BNL's") proposed Bolling 04 SESW 2960 "Location" is in Sec. 4 T29S R60W in Las Animas County, Colorado. BNL plans to drill and test one **helium** well. If the well produces commercial quantities of helium the well will be shut-in until helium production/processing facilities can be constructed at an offsite facility location. The helium facility will be on lands outside of the Oil and Gas Development Plan. The facility will be constructed on private surface. The landowner agreement provides for the installation of the gas gathering line. The production/processing facilities will not require an Oil and Gas Development Plan. The well will be drilled vertically and will not require hydraulic fracturing. The proposed location is fee surface and fee minerals with a total pad disturbance of ± 1.2 acres. The graded site elevation is expected to be approximately 5,451'. No federal surface or minerals are involved in this project. All operations would be conducted in compliance with all federal, state, and local applicable laws, rules, and regulations.

Plan

Interim reclamation is key to topsoil conservation and stabilization and lays the groundwork for success final reclamation of the restoration of the natural vegetative community, hydrology, and wildlife habitats. Best Management Practices (BMPs), where applicable, mixed with other reclamation measures ensure successful final reclamation.

General Interim Reclamation Guidelines

The general interim reclamation guidelines will apply to all linear projects; access roads, pipelines, flowlines, etc. and to all wellpads and production pads.

In areas that are disturbed by construction, topsoil will be stripped and stockpiled near the site. All brush, limbs, and other woody material will be stockpiled separately from the topsoil. Soil materials will be managed so that erosion and sediment transport are minimized. Nearby drainages will be protected by appropriate measures.

The salvaging and spreading of topsoil will not be performed when the ground or topsoil is frozen or too wet to adequately support construction equipment. If such equipment creates ruts in excess of four inches deep, the soil will be deemed too wet.

All earthwork for interim reclamation will be completed within six months of well completion or plugging (weather permitting).

In areas that will not be drill-seeded, the seed mix will be broadcast-seeded at twice the application rate shown and covered 0.25 to 0.5 inches deep with a harrow or drag bar or will be broadcast-seeded into imprints, such as fresh dozer cleat marks.

Initial seedbed preparation will consist of backfilling, leveling, and ripping all compacted areas. Final seedbed preparation will consist of contour cultivating to a depth of four to six inches within 24 hours prior to seeding. Seeding will be conducted no more than 24 hours following completion of final seedbed preparation. A certified weed-free seed as agreed upon with the private surface owner to meet reclamation standards will be used. The seed mix will be used on all disturbed surfaces.

To help mitigate the contrast of recontoured slopes, reclamation will include measures to feather cleared lines of vegetation and to save and redistribute cleared trees, debris, and rock over recontoured cut/fill slopes.

Revegetation will be accomplished by planting a seed mix as agreed upon by the private surface owner. The seed mix will include a portion of vegetation occurring in the surrounding natural vegetation.

No seeding will occur from May 15 to September 15. Fall seeding is preferred and will be conducted after September 15 and prior to ground freezing. Spring seeding will be conducted after the frost leaves the ground and no later than May 15.

Annual or noxious weeds shall be controlled on all disturbed areas as directed by the private surface owner. An intensive weed monitoring and control program will be implemented beginning the first growing season after interim reclamation. Noxious weeds that have been identified during monitoring will be promptly treated and controlled. All reclamation equipment will be cleaned prior to use to reduce the potential for introduction of noxious weeds or other undesirable non-native species. The operator will coordinate all weed and insect control measures with state and/or local management agencies.

Reclaimed areas will be monitored annually. Actions will be taken to ensure that reclamation standards are met as quickly as reasonably practical.

Bolling 04 SESW 2960:

One wellpad, access road, and pipeline are planned for this Location. Production facilities will be located on an offsite facility location per landowner agreement.

Wellpad/Access Road/Gathering Lines

- During the drilling of the well, there will be minimal disturbance. The access road will be minimally upgraded and portable containment liners will be used under the drilling rig during drilling activities.
- To negate surface disturbance 12" x 12" test pits will be dug in the middle-west and the southwest corners of the wellpad. The pits will be dug in a manner prior to wellpad construction so that will not require any compaction post construction. The wellpad is small and the soil types are all the same so both pits are representative of the location.
- During wellpad construction topsoil will not be piled higher than 3 to 5 feet high and slopes of the stockpiles should not exceed 2:1 (horizontal:vertical) to minimize erosion potential and facilitate interim stabilization. Topsoil material will be placed south of the cleared pad and will be approximately 841 CY.
- Following the drilling and completion activities, the well pad will be reduced, thus minimizing the area of disturbance for the production life of the well. The pad will be recontoured, subsoil will be applied, and any topsoil recovered during active construction will be applied over the subsoil. The reduced area

will be stabilized with seed, hydro-seed, bonded fiber matrix, mulch, etc. as deemed appropriate for the site. Please see Production/Interim Reclamation Drawing.

- The portion of the wellpad and access road needed for ongoing operations will be graveled and the access road will be crowned and ditched. Any gravel not needed for interim reclaimed will be removed from the road and wellpad.
- Any gathering line corridors will be contained within the working pad surface and will be reclaimed leaving only operational areas where necessary. Topsoil will be reapplied during interim reclamation to promote regrowth of vegetation. The wellpad which includes the gathering lines will be recontoured, topsoil reapplied, and the reduced area stabilized with seed, hydro-seed, bonded fiber matrix, mulch, etc. Continual interim reclamation stabilization controls will be used during both active and post construction until permanent vegetation is established.
- If requested by the surface owner, BNL will fence the entire location with wildlife friendly barb wire, to keep ungulates out of the Location.
- Initial disturbance of the wellpad will be 1.2 acres which will be reduced to 0.2 acre post drilling and setting production facilities. Please see the attached Production/Reclamation Diagram.
- A seed mix will be approved by Private Surface Owner prior to interim reclamation and per their standard process.

BNL will submit a Form 4 Sundry Notice to describe reclamation procedures, associated mitigation measures, changes to final land use, and the total cover of live perennial vegetation to evaluate the success of interim reclamation.

Best Management Practices for Interim Reclamation:

- Silt Fence or Straw Wattles: There shall be a silt fence or straw wattles installed on the northern portion, east side, and the southeast corner of the location to control run-on to the pad, and any stormwater flow to runoff the pad uncontrolled.
- Topsoil material will be placed on the west side of the cleared pad.
- Following the drilling and completion activities, the well pad will be reduced, thus minimizing the area of disturbance for the production life of the well. The pad will be recontoured, subsoil will be applied, and any topsoil recovered during active construction will be applied over the subsoil. The reduced area will be stabilized with seed, hydro-seed, bonded fiber matrix, mulch, etc. as deemed appropriate for the site. Please see Production/Interim Reclamation Drawing.
- If weeds appear, an aggressive weed management program will be implemented. The program will depend on *if* weeds appear and volume and type.
- A seed mix will be approved by the surface owner and the Colorado Parks and Wildlife prior to interim reclamation and per their standard process.
- If requested by the surface owner, BNL will fence the entire location with wildlife friendly barb wire, to keep ungulates out of the Location.
- All earthwork for interim reclamation will be completed within six months of well completion or plugging. Reclamation will be completed in the fall if possible; after September 15 and prior to ground freezing. If spring seeding is necessary, seeding will be conducted after the frost leaves the ground and no later than May 15.
- All interim reclaimed areas will be recontoured as much as possible to match the initial surrounding topography while maintaining safe working areas.

UNGRADED ELEVATION: 5452.6'

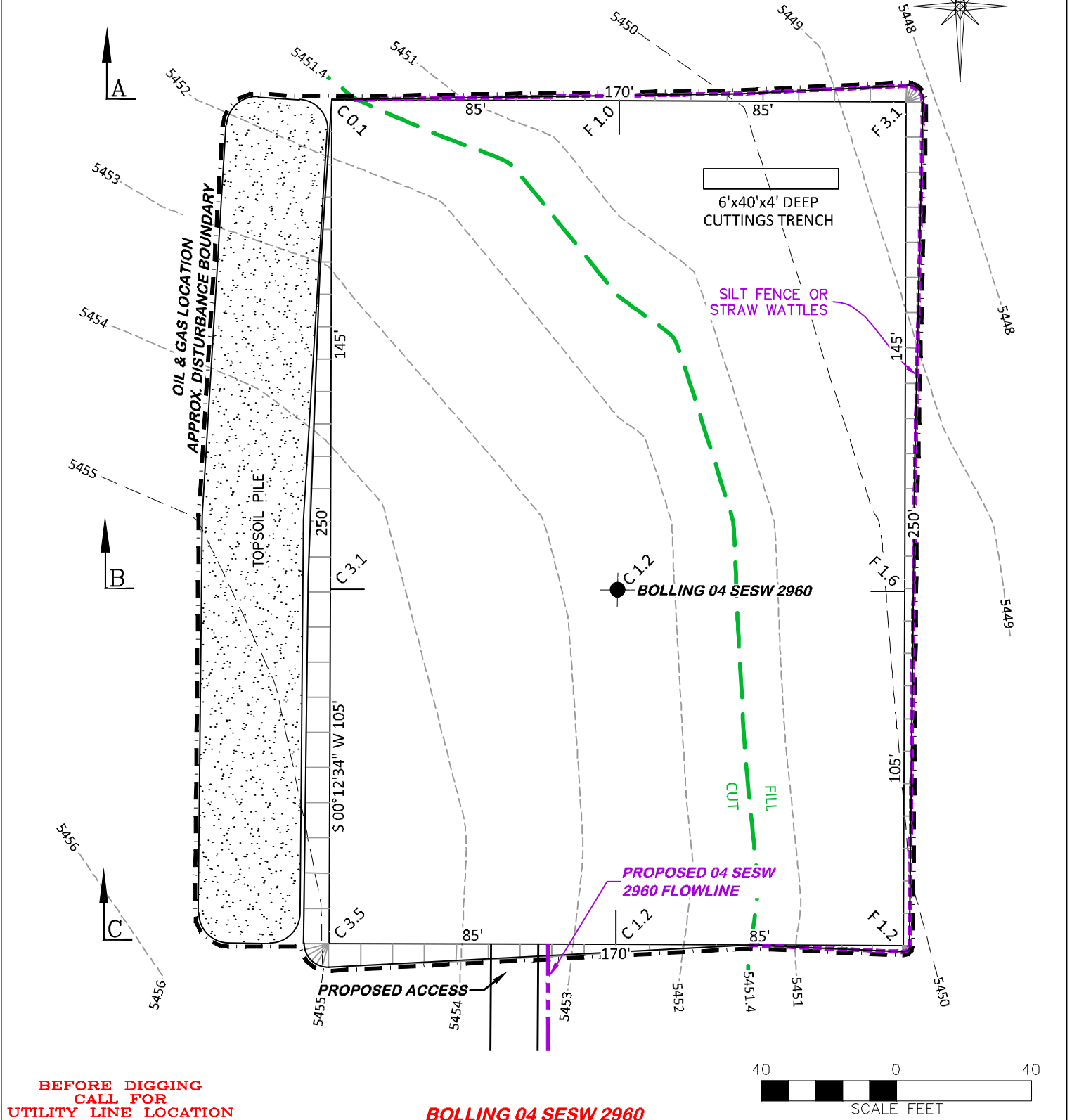
FINAL ELEVATION: 5451.4'

PROPOSED AREA OF DISTURBANCE: 1.2± ACRES

AREA OF WORKING PAD SURFACE: 1.0± ACRES

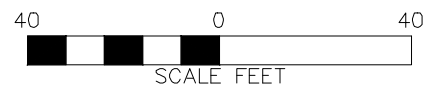
PROPOSED ACCESS DISTURBANCE: 0.4± ACRES

PROPOSED FLOWLINE DISTURBANCE: 0.5± ACRES



BEFORE DIGGING
CALL FOR
UTILITY LINE LOCATION

BOLLING 04 SESW 2960



RIFFIN & ASSOCIATES, INC.

(307) 362-5028

1414 ELK ST., ROCK SPRINGS, WY 82901

DRAWN: 3/22/22 - JMB

SCALE: 1" = 40'

REVISED: 5/4/23 - DWB

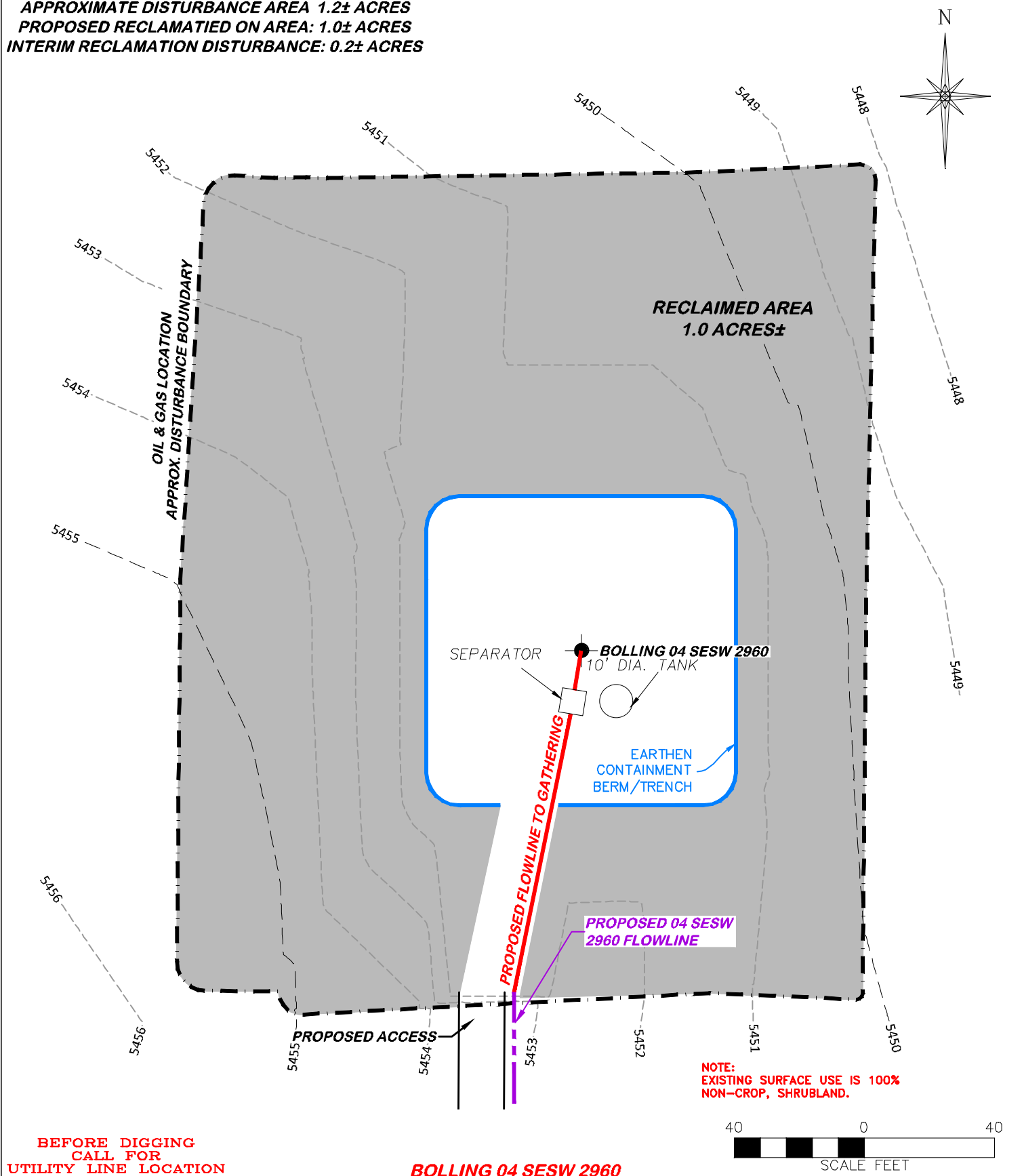
DRG JOB No. 22206

MOVED WELL

304c(15) BMP

STORMWATER AND EROSION CONTROL PLAN
BNL (ENTERPRISE) INC.
BOLLING 04 SESW 2960
SESW, SECTION 4, T. 29 S., R. 60 W., 6th P.M.,
LAS ANIMAS COUNTY, COLORADO

APPROXIMATE DISTURBANCE AREA 1.2± ACRES
 PROPOSED RECLAMATED ON AREA: 1.0± ACRES
 INTERIM RECLAMATION DISTURBANCE: 0.2± ACRES



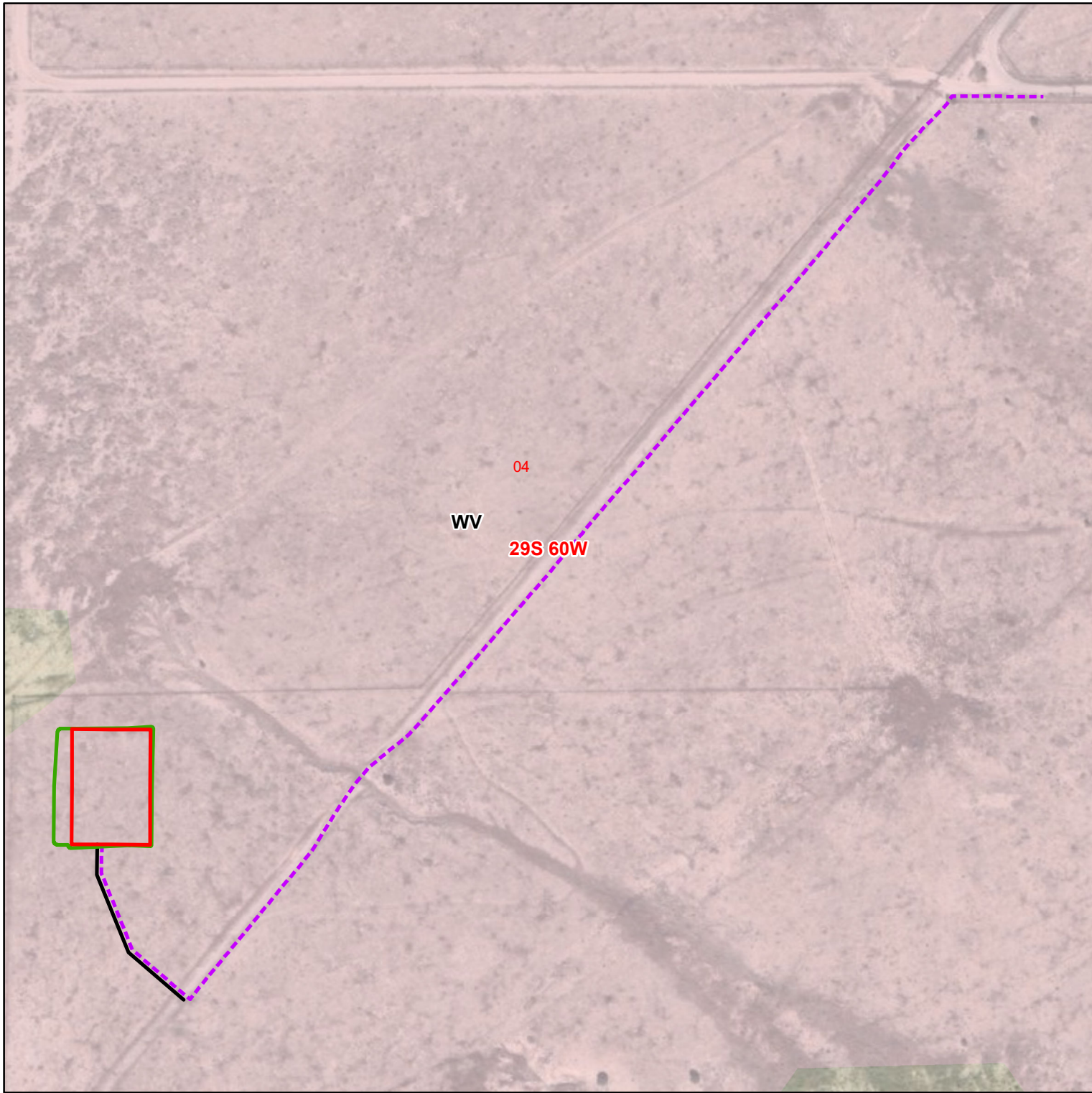
BEFORE DIGGING
 CALL FOR
 UTILITY LINE LOCATION

BOLLING 04 SESW 2960

DRG RIFFIN & ASSOCIATES, INC.
 (307) 362-5028 1414 ELK ST., ROCK SPRINGS, WY 82901

DRAWN: 3/22/22 - JMB	SCALE: 1" = 40'
REVISED: 5/4/23 - DWB	DRG JOB No. 22206
MOVED WELL	304c(16) RECLAMATION

**INTERIM RECLAMATION
 BNL (ENTERPRISE) INC.
 BOLLING 04 SESW 2960
 SESW, SECTION 4, T. 29 S., R. 60 W., 6th P.M.,
 LAS ANIMAS COUNTY, COLORADO**



Legend

- Proposed Disturbance Area
- Proposed Working Pad Surface
- Proposed Access Road
- Proposed Pipeline

Soil Types

- WV

SOURCE: NRCS July 2020
Date: 4/23/2022

Project LocationAn inset map of southeastern Colorado showing county boundaries. A red star marks the project location in Las Animas County. Neighboring counties include Pueblo, Otero, Bent, Prowers, Baca, and Kiowa. States shown are Colorado, New Mexico, and Kansas. Major cities like Pueblo, Colorado Springs, and El Paso are labeled.

BNL (ENTERPRISE) INC.
BOLLING 04 SESW 2960
SEC 04 T29S R60W (SE/4 SE/4)
LAS ANIMAS COUNTY, CO
SOIL TYPES

A north arrow pointing upwards and a scale bar marked 0, 250, and 500 feet.

Prepared By: Redhawk GIS, LLC