
TRANSPORTATION PLAN

BNL | ENTERPRISE

Bolling 04 SESW 2960

Sec. 4 T29S R60W (SE/4 SW/4)

Las Animas County, Colorado

Surface: Fee

Submitted as an accompaniment to the Form 2A Application and consistent with the requirements of Las Animas County Government.

May 17, 2023

BNL (Enterprise) Inc. Las Animas County, Colorado

Transportation Plan

Project Summary:

BNL (Enterprise) Inc.'s ("BNL's") proposed Bolling 04 SESW 2960 "Location" is in Sec. 4 T29S R60W in Las Animas County, Colorado. BNL plans to drill and test one **helium** well. If the well produces commercial quantities of helium the well will be shut-in until helium production/processing facilities can be constructed at an offsite facility location. The helium facility will be on lands outside of the Oil and Gas Development Plan. The facility will be constructed on private surface. The landowner agreement provides for the installation of the gas gathering line. The production/processing facilities will not require an Oil and Gas Development Plan. The well will be drilled vertically and will not require hydraulic fracturing. The proposed location is fee surface and fee minerals with a total pad disturbance of ± 1.2 acres. The graded site elevation is expected to be approximately 5,451'. No federal surface or minerals are involved in this project. All operations would be conducted in compliance with all federal, state, and local applicable laws, rules, and regulations.

Plan

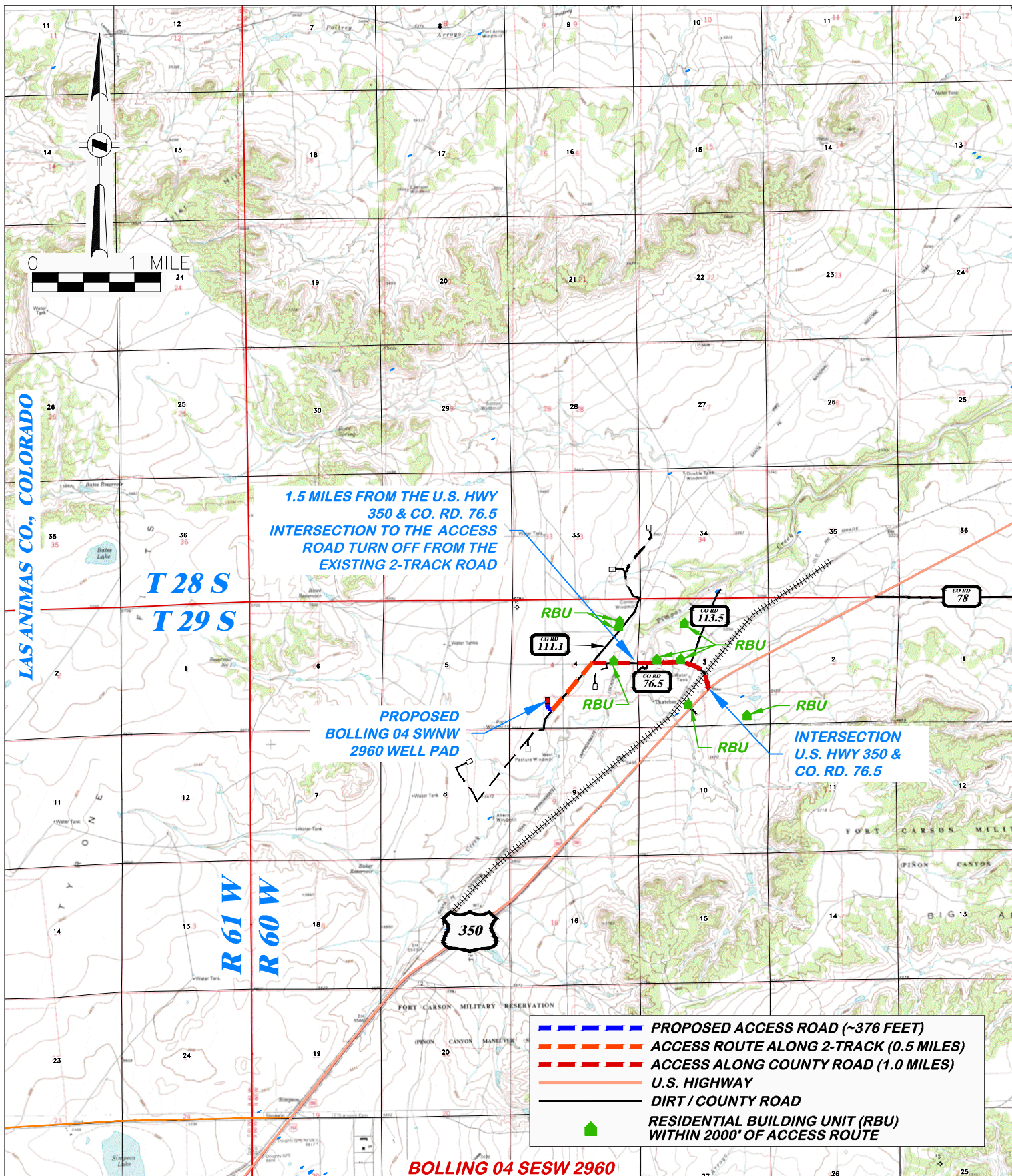
All traffic will enter the Bolling 04 SESW 2960 wellpad ("Location") from County Road 111-1. Please see the attached Haul Route Map. A Transportation Plan is not required by Las Animas County as part of the permit process. BNL will work with Las Animas County on any Access Permits or Rights-of-Ways needed.

BNL has not chosen service providers for this Location. However, the service providers will either come from I-25, north of the Denver area, or from I-25, south from Trinidad. Due to the remote area of the Location, access routes are extremely limited.

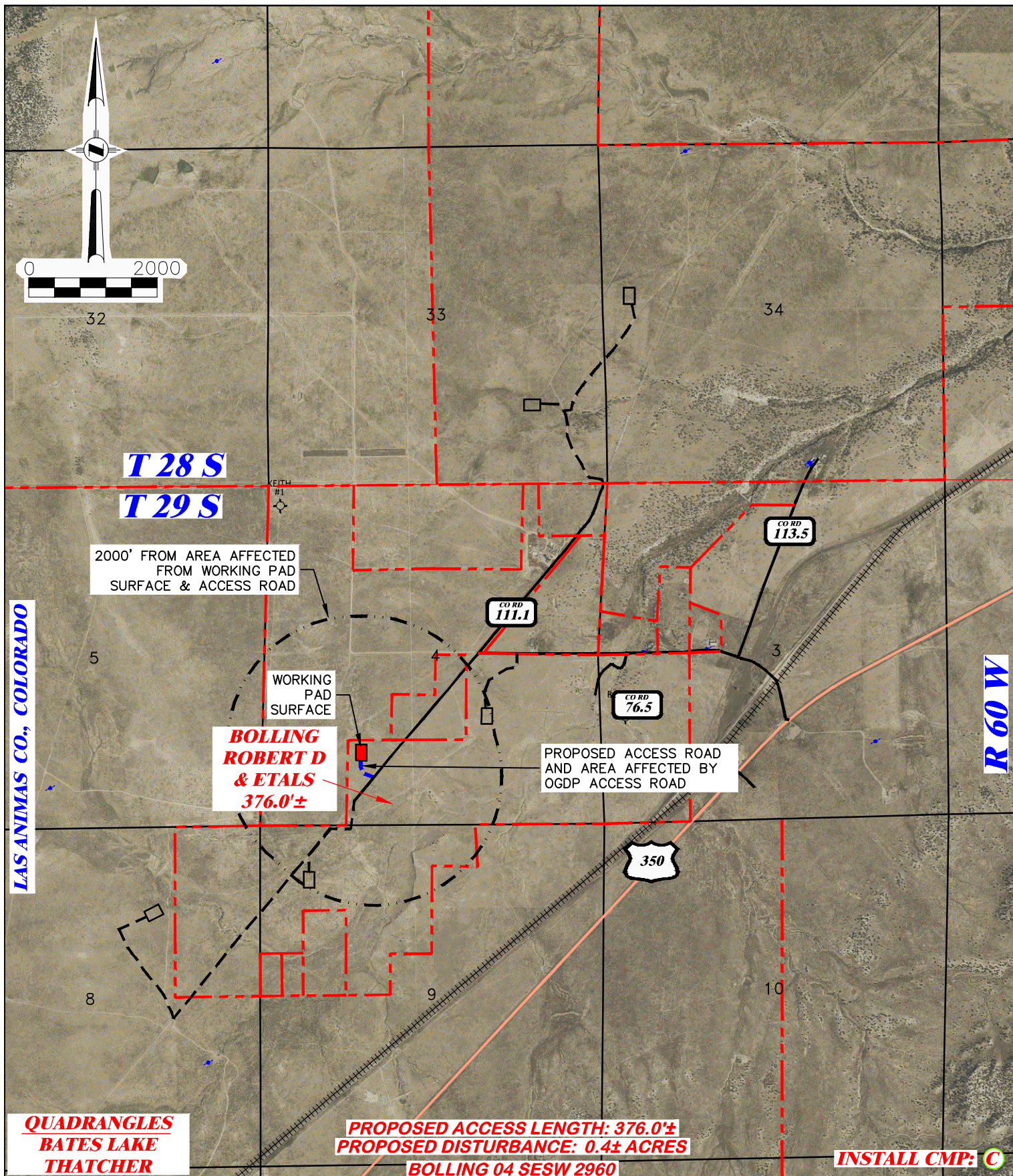
The majority of heavy traffic will occur during daylight hours most likely between the times of 7:00 a.m. and 6:00 p.m. during the construction phase. During drilling and completion there is a possibility of traffic any time day or night, however, once equipment is on location for drilling and completion, it will remain in place for several days, negating any need for daily mobilization. Traffic will significantly subside during the long-term production phase. Production traffic will include light duty trucks usually no more than once a day for a lease operator.




Best Management Practices:

- Application of fresh water during dry season.
- Fresh water or magnesium chloride application to graveled surface of the Location and associated road(s).
- Speed limit signs will be posted per surface owner agreement.
- Drivers will observe posted speed limits on unpaved roads to avoid or minimize fugitive dust.
- Drivers will cover and secure loads to prevent debris from entering roadways.
- Vehicles will be maintained in good working condition to avoid excess emissions and safety concerns.
- Contractors will be notified of speed limits if no signs are posted.
- Regular road maintenance such as grading and adding additional gravel as needed.



DRG RIFFIN & ASSOCIATES, INC. (307) 362-5028 1414 ELK ST., ROCK SPRINGS, WY 82901		PROPOSED ACCESS ROAD MAP	
HAUL ROUTE BNL (ENTERPRISE) INC. BOLLING 04 SESW 2960 SESW, SECTION 4, T. 29 S., R. 60 W., 6th P.M., LAS ANIMAS COUNTY, COLORADO			
DRAWN: 3/22/22 - JMB	SCALE: 1" = MILE		
REVISED: 5/9/23 - DWB	DRG JOB No. 22206		
UPDATED MAP	304b(7)F ACCESS		



<div>RIFFIN & ASSOCIATES, INC.</div> <div><small>(307) 362-5028</small> 1414 ELK ST., ROCK SPRINGS, WY 82901</div>		<div>PROPOSED NEW ACCESS MAP</div> <div>BNL (ENTERPRISE) INC.</div> <div>BOLLING 04 SESW 2960</div> <div>SESW, SECTION 4, T. 29 S., R. 60 W., 6th P.M.,</div> <div>LAS ANIMAS COUNTY, COLORADO</div>	
DRAWN: 3/22/22 - JMB	SCALE: 1" = 2000'	<div></div> <div>PROPOSED WORKING PAD SURFACE</div>	<div>PROPOSED ACCESS W/ AFFECTED AREA </div>
REVISED: 5/9/23 - DWB	DRG JOB No. 22206		
UPDATED MAP	304b(7)F ROAD SHEET 2 OF 2		