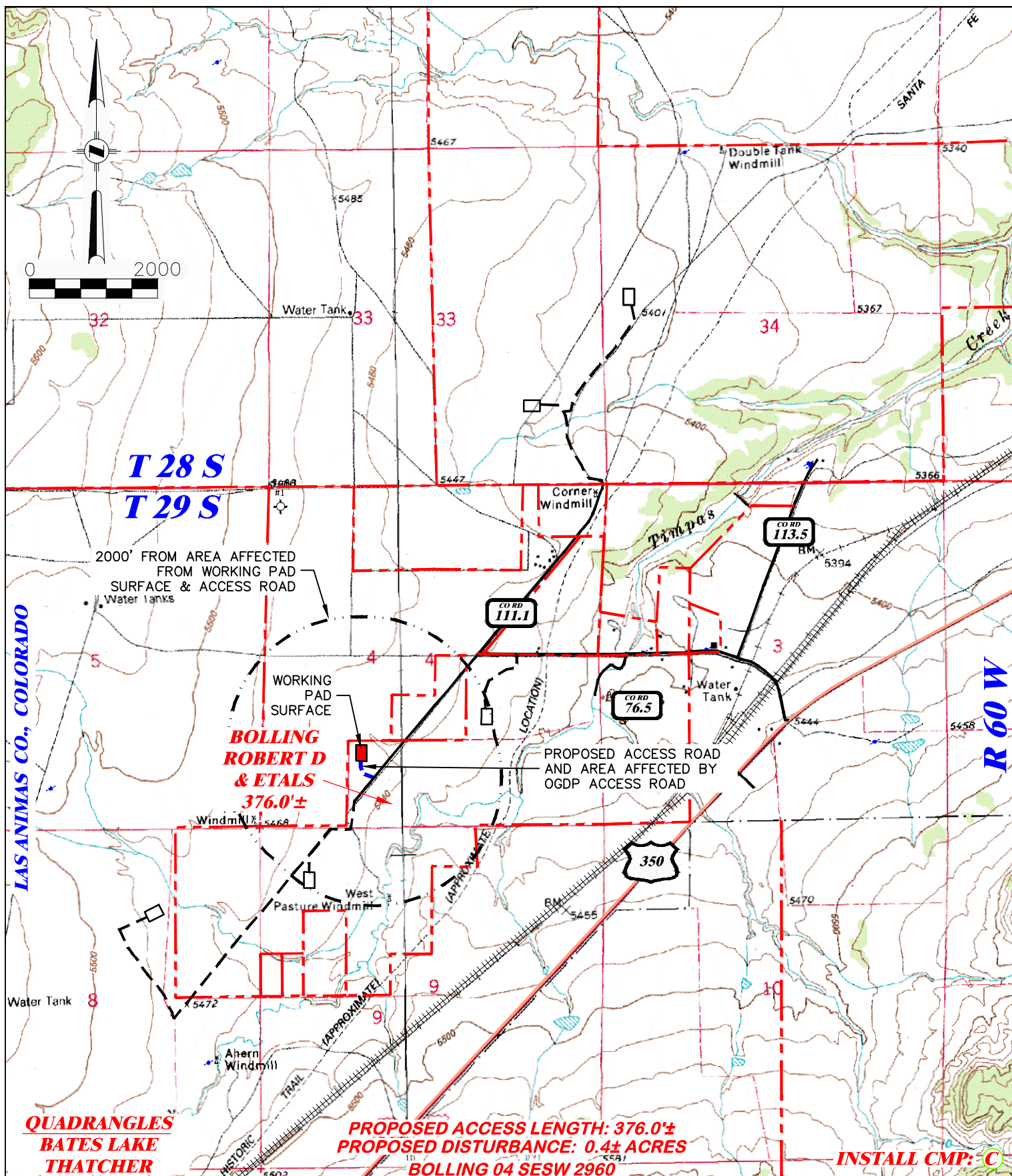


<b>DRG RIFFIN &amp; ASSOCIATES, INC.</b> (307) 362-5028 1414 ELK ST., ROCK SPRINGS, WY 82901		<b>PROPOSED ACCESS ROAD MAP</b>	
<b>HAUL ROUTE</b> <b>BNL (ENTERPRISE) INC.</b> <b>BOLLING 04 SESW 2960</b> <b>SESW, SECTION 4, T. 29 S., R. 60 W., 6th P.M.,</b> <b>LAS ANIMAS COUNTY, COLORADO</b>			
<b>DRAWN: 3/22/22 - JMB</b>	<b>SCALE: 1" = MILE</b>		
<b>REVISED: 5/9/23 - DWB</b>	<b>DRG JOB No. 22206</b>		
<b>UPDATED MAP</b>	<b>304b(7)F ACCESS</b>		





**RIFFIN & ASSOCIATES, INC.**

(307) 362-5028

1414 ELK ST., ROCK SPRINGS, WY 82901

DRAWN: 3/22/22 - JMB

SCALE: 1" = 2000'

REVISED: 5/9/23 - DWB

DRG JOB No. 22206

UPDATED MAP

304b(7)F ROAD SHEET 1 OF 2

**PROPOSED NEW ACCESS MAP**

**BNL (ENTERPRISE) INC.**

**BOLLING 04 SESW 2960**

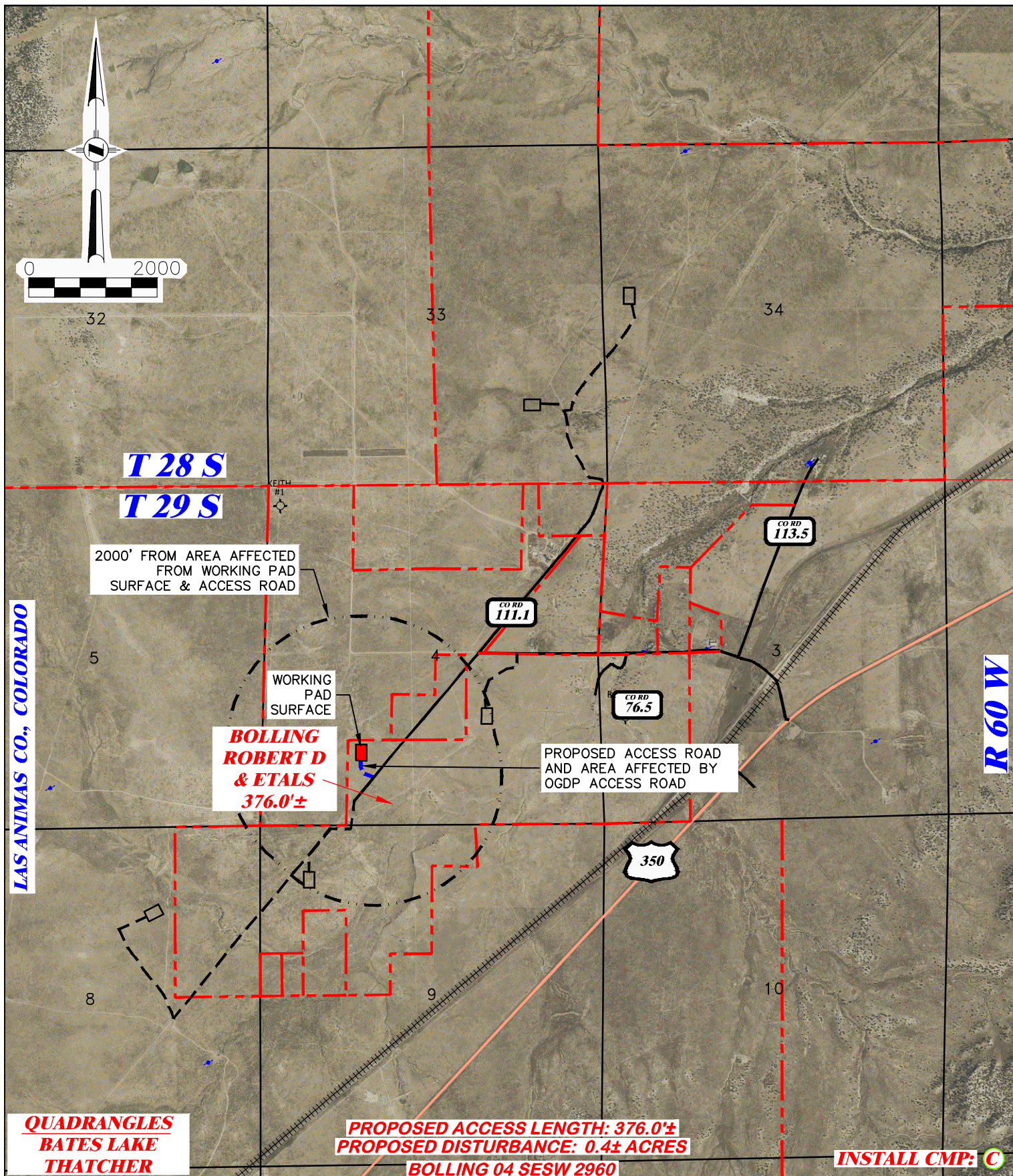
**SESW, SECTION 4, T. 29 S., R. 60 W., 6th P.M.,  
LAS ANIMAS COUNTY, COLORADO**






**PROPOSED WORKING PAD SURFACE**

**PROPOSED ACCESS W/ AFFECTED AREA** — — — — —





<div><b>RIFFIN &amp; ASSOCIATES, INC.</b></div> <div><small>(307) 362-5028</small> 1414 ELK ST., ROCK SPRINGS, WY 82901</div>		<div><b>PROPOSED NEW ACCESS MAP</b></div> <div><b>BNL (ENTERPRISE) INC.</b></div> <div><b>BOLLING 04 SESW 2960</b></div> <div><b>SESW, SECTION 4, T. 29 S., R. 60 W., 6th P.M.,</b></div> <div><b>LAS ANIMAS COUNTY, COLORADO</b></div>	
<b>DRAWN: 3/22/22 - JMB</b>	<b>SCALE: 1" = 2000'</b>	<div></div> <div><b>PROPOSED WORKING PAD SURFACE</b></div>	<div><b>PROPOSED ACCESS W/ AFFECTED AREA</b> </div>
<b>REVISED: 5/9/23 - DWB</b>	<b>DRG JOB No. 22206</b>		
<b>UPDATED MAP</b>	<b>304b(7)F ROAD SHEET 2 OF 2</b>		