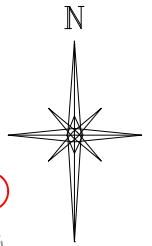



FINAL ELEVATION: 5451.4'

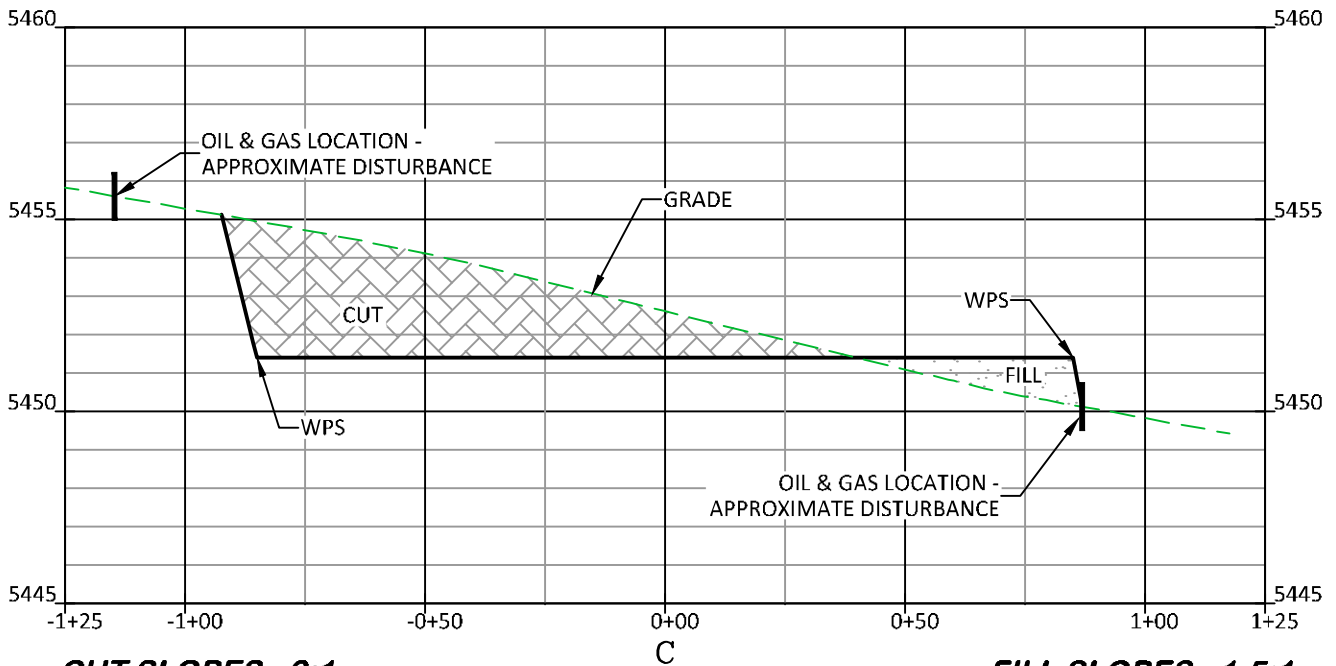
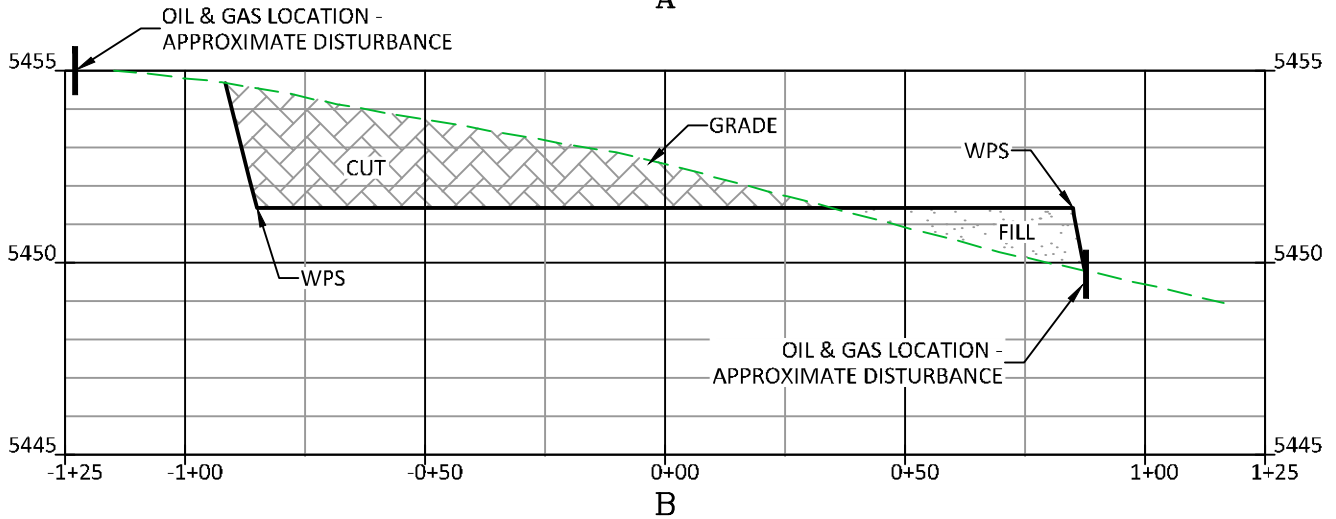
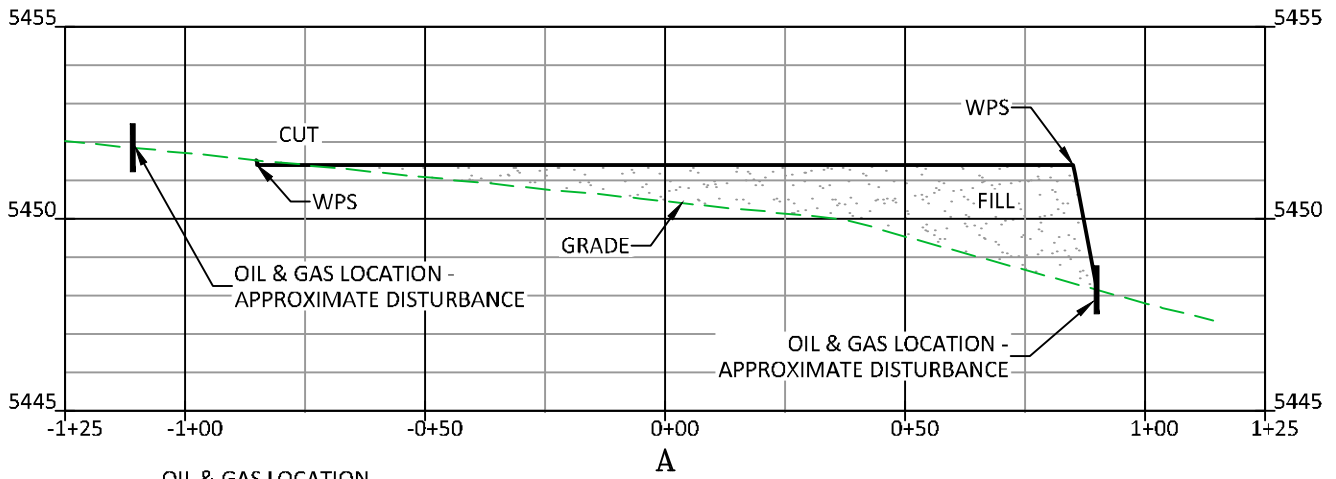
A



NOTE: THE EARTH QUANTITIES ON THIS DRAWING ARE ESTIMATED AND THE USE OF SAID QUANTITIES IS AT THE RESPONSIBILITY OF THE USER.

ESTIMATED EARTHWORK

 RIFFIN & ASSOCIATES, INC. (307) 362-5028 1414 ELK ST., ROCK SPRINGS, WY 82901		EXCESS EXISTING MATERIAL				
		ITEM	CUT	FILL	TOPSOIL	EXCESS
DRAWN: 3/22/22 - JMB	SCALE: 1" = 40'	PAD	1,509 CY	656 CY	841 CY	12 CY
REVISED: 5/4/23 - DWB	DRG JOB No. 22206	PIT	NONE			NONE
MOVED WELL	304b(7)Bi CONST	TOTALS	1,509 CY	656 CY	841 CY	12 CY



CUT SLOPES - 2:1

FILL SLOPES - 1.5:1

BOLLING 04 SESW 2960

CONSTRUCTION LAYOUT DRAWING 2 OF 5

DRG RIFFIN & ASSOCIATES, INC.
 (307) 362-5028 1414 ELK ST., ROCK SPRINGS, WY 82901

DRAWN: 3/22/22 - JMB

SCALE: H - 1" = 40' V - 1" = 5'

REVISED: 5/4/23 - DWB

DRG JOB No. 22206

MOVED WELL

304b(7)Bi XSEC

**CROSS-SECTIONS
 BNL (ENTERPRISE) INC.
 BOLLING 04 SESW 2960
 SESW, SECTION 4, T. 29 S., R. 60 W., 6th P.M.,
 LAS ANIMAS COUNTY, COLORADO**

UNGRADED ELEVATION: 5452.6'

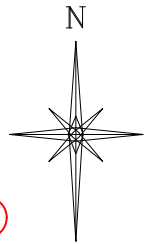
FINAL ELEVATION: 5451.4'

PROPOSED AREA OF DISTURBANCE: 1.2± ACRES

AREA OF WORKING PAD SURFACE: 1.0± ACRES

PROPOSED ACCESS DISTURBANCE: 0.4± ACRES

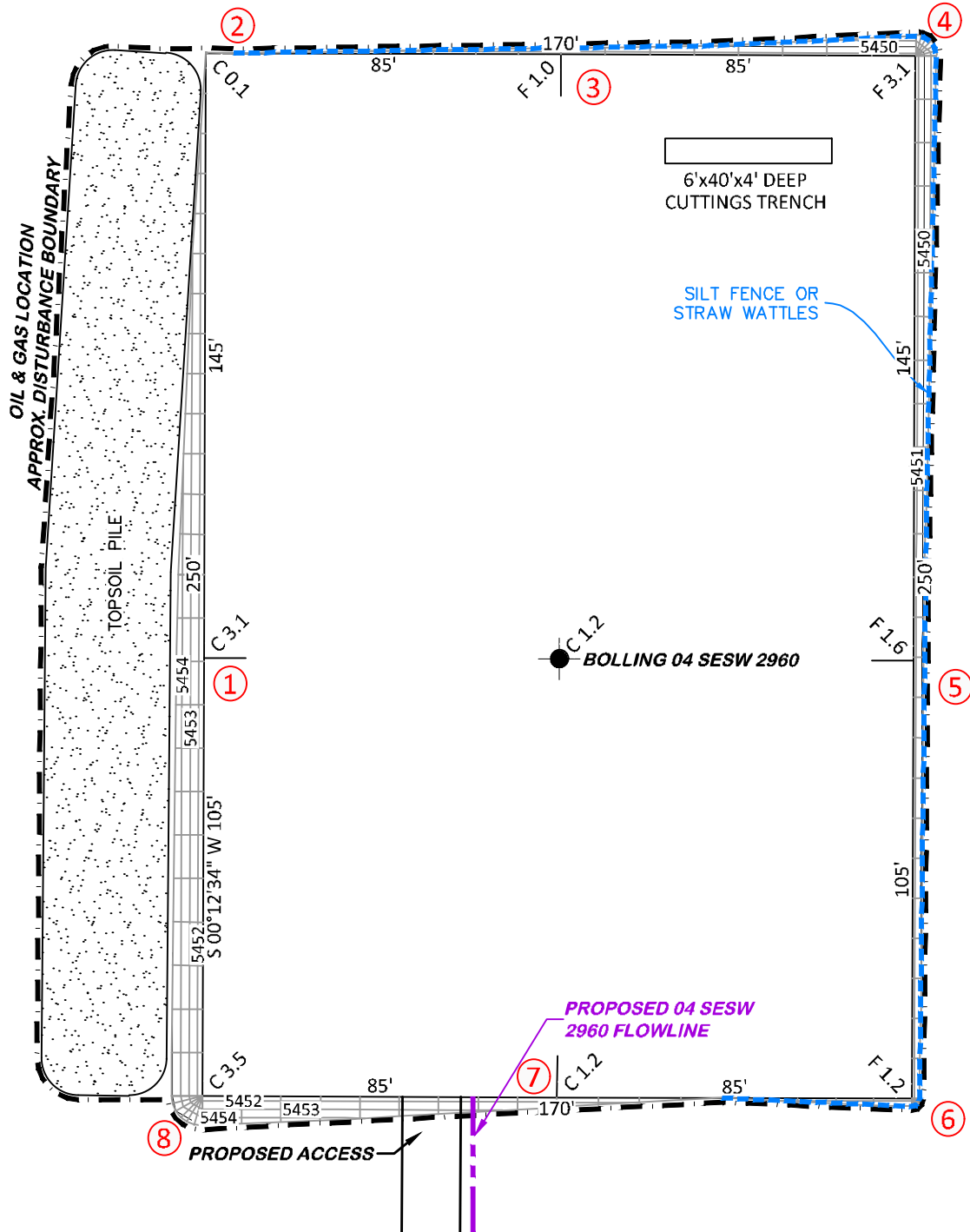
PROPOSED FLOWLINE DISTURBANCE: 0.5± ACRES



A

B

C



BEFORE DIGGING
CALL FOR
UTILITY LINE LOCATION

BOLLING 04 SESW 2960



CONSTRUCTION LAYOUT DRAWING 3 OF 5

DRG RIFFIN & ASSOCIATES, INC.
(307) 362-5028 1414 ELK ST., ROCK SPRINGS, WY 82901

DRAWN: 3/22/22 - JMB

SCALE: 1" = 40'

REVISED: 5/4/23 - DWB

DRG JOB No. 22206

MOVED WELL

304b(7)Bi DSGN CONT

PROPOSED PAD CONTOURS
BNL (ENTERPRISE) INC.
BOLLING 04 SESW 2960
SESW, SECTION 4, T. 29 S., R. 60 W., 6th P.M.,
LAS ANIMAS COUNTY, COLORADO

UNGRADED ELEVATION: 5452.6'

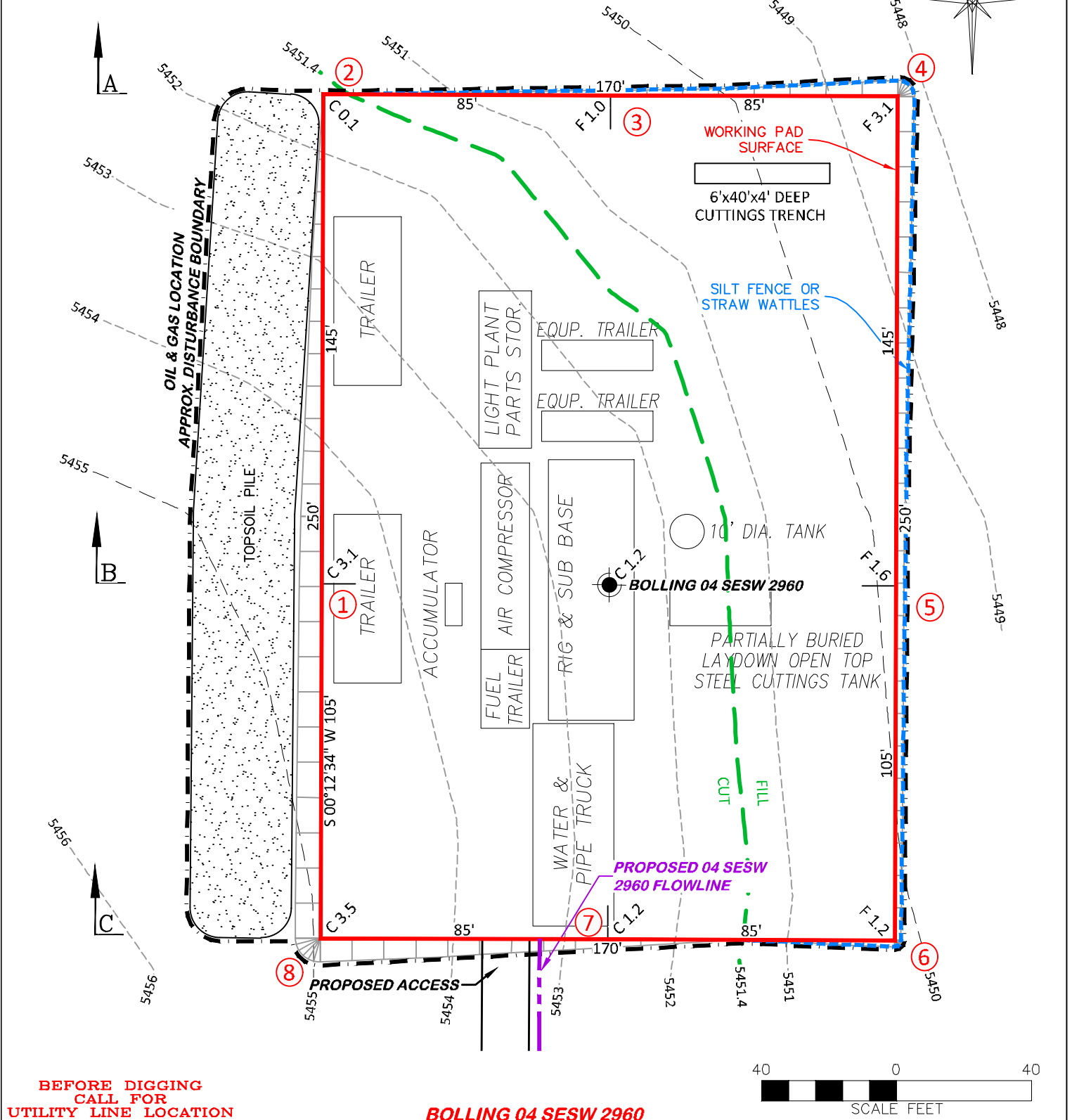
FINAL ELEVATION: 5451.4'

PROPOSED AREA OF DISTURBANCE: 1.2± ACRES

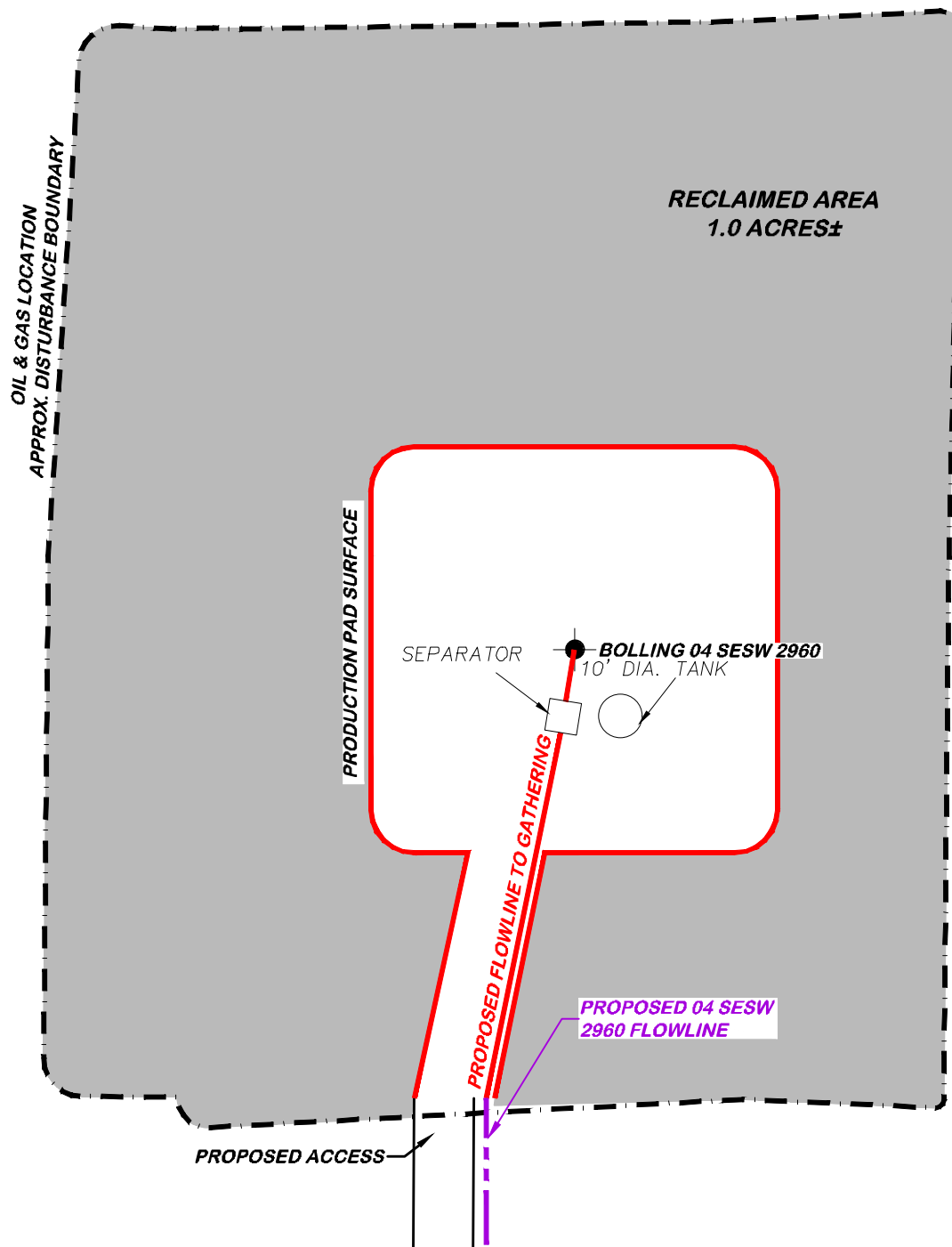
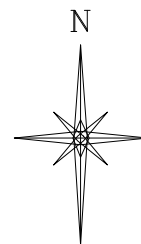
AREA OF WORKING PAD SURFACE: 1.0± ACRES

PROPOSED ACCESS DISTURBANCE: 0.4± ACRES

PROPOSED FLOWLINE DISTURBANCE: 0.5± ACRES

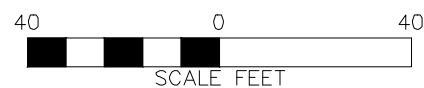


APPROXIMATE DISTURBANCE AREA 1.2± ACRES
PROPOSED RECLAMATED ON AREA: 1.0± ACRES
INTERIM RECLAMATION DISTURBANCE: 0.2± ACRES



BEFORE DIGGING
CALL FOR
UTILITY LINE LOCATION

BOLLING 04 SESW 2960



DRG RIFFIN & ASSOCIATES, INC.

(307) 362-5028

1414 ELK ST., ROCK SPRINGS, WY 82901

DRAWN: 3/22/22 - JMB

SCALE: 1" = 40'

REVISED: 5/4/23 - DWB

DRG JOB No. 22206

MOVED WELL

304b(7)Bv FACILITY

CONSTRUCTION LAYOUT DRAWING 5 OF 5

**FACILITY LAYOUT DRAWING
BNL (ENTERPRISE) INC.
BOLLING 04 SESW 2960
SESW, SECTION 4, T. 29 S., R. 60 W., 6th P.M.,
LAS ANIMAS COUNTY, COLORADO**