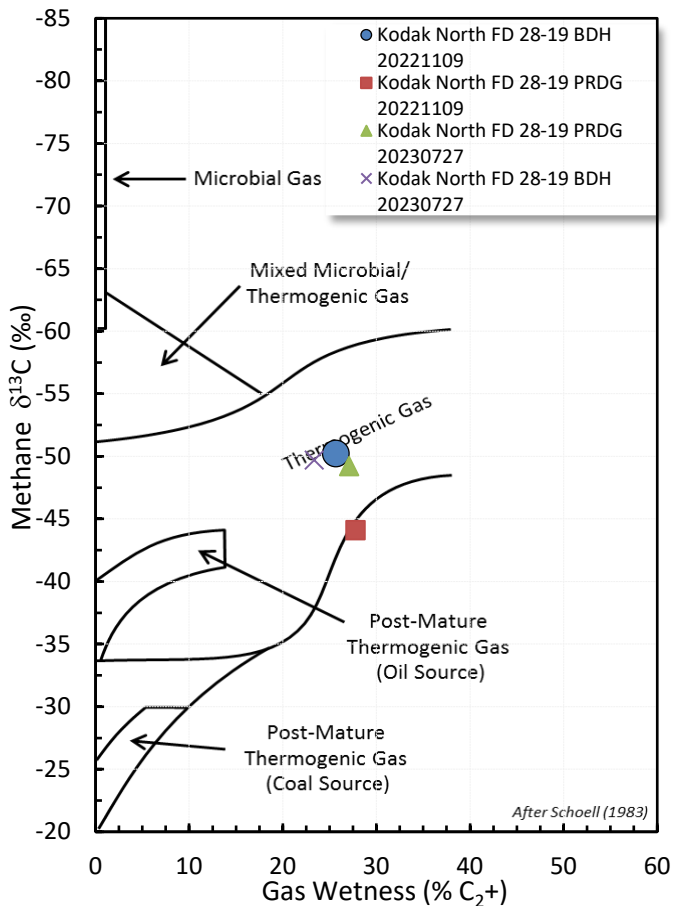
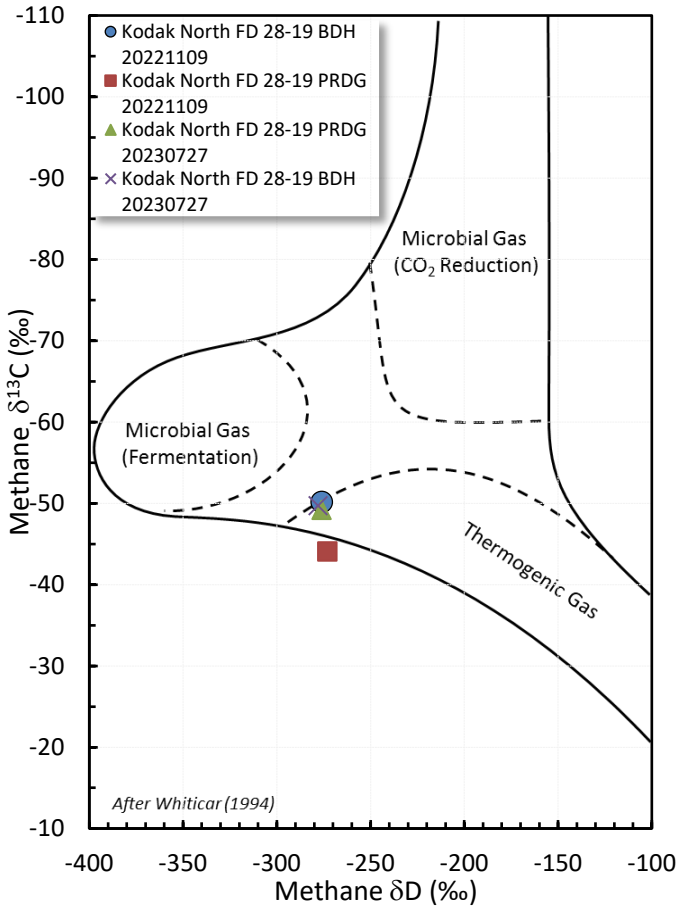


# Stable Isotope Interpretive Plots

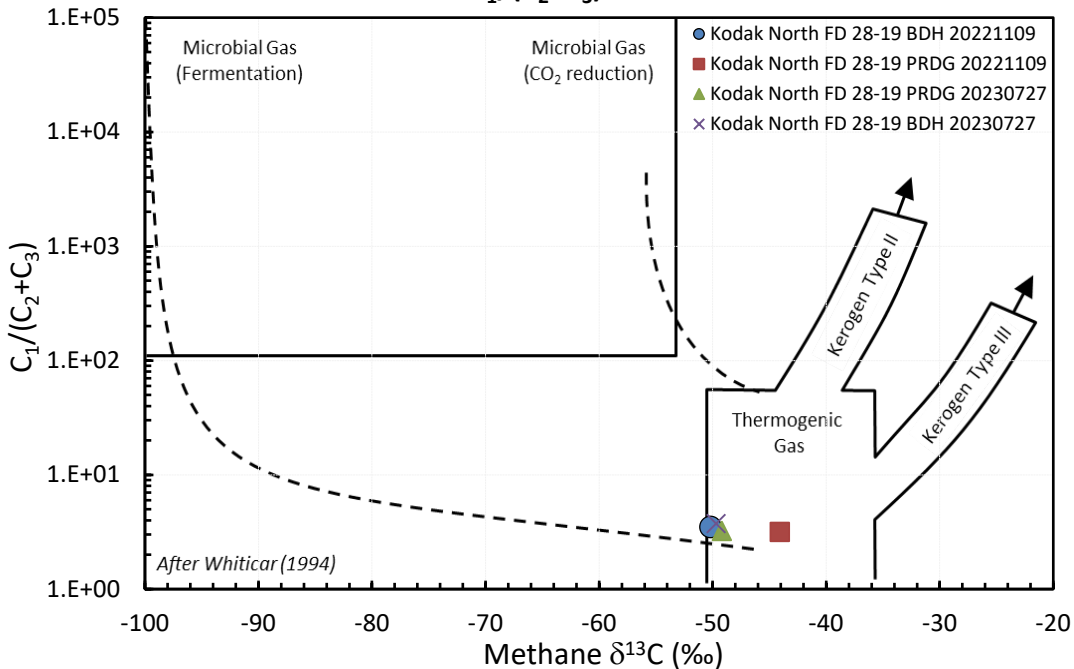
## Methane vs Gas Wetness Genetic Classification



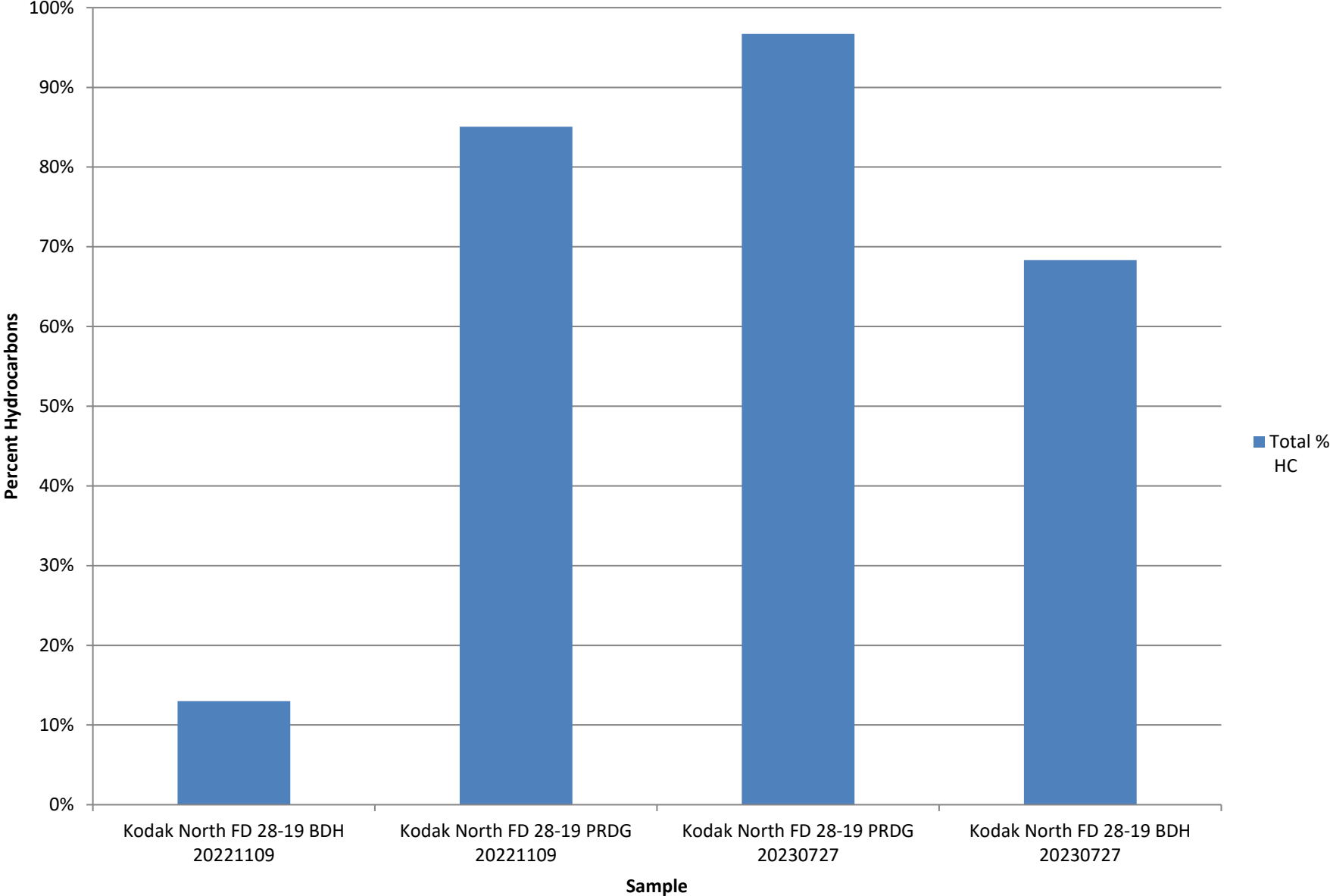
## Methane $\delta^{13}\text{C}$ vs $\delta\text{D}$ Genetic Classification Plot



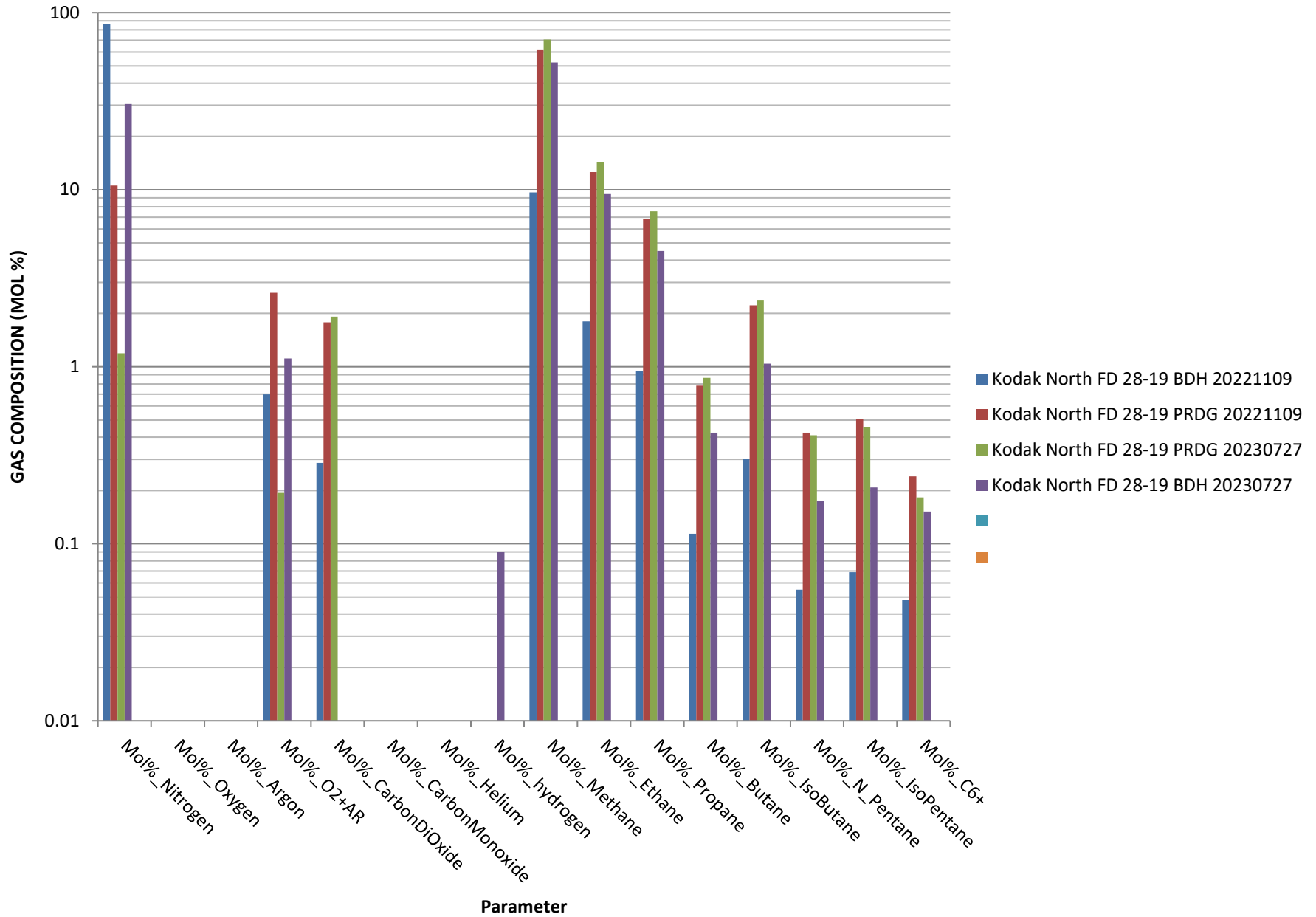
## Methane $\delta^{13}\text{C}$ vs $\text{C}_1/(\text{C}_2+\text{C}_3)$ Genetic Classification Plot



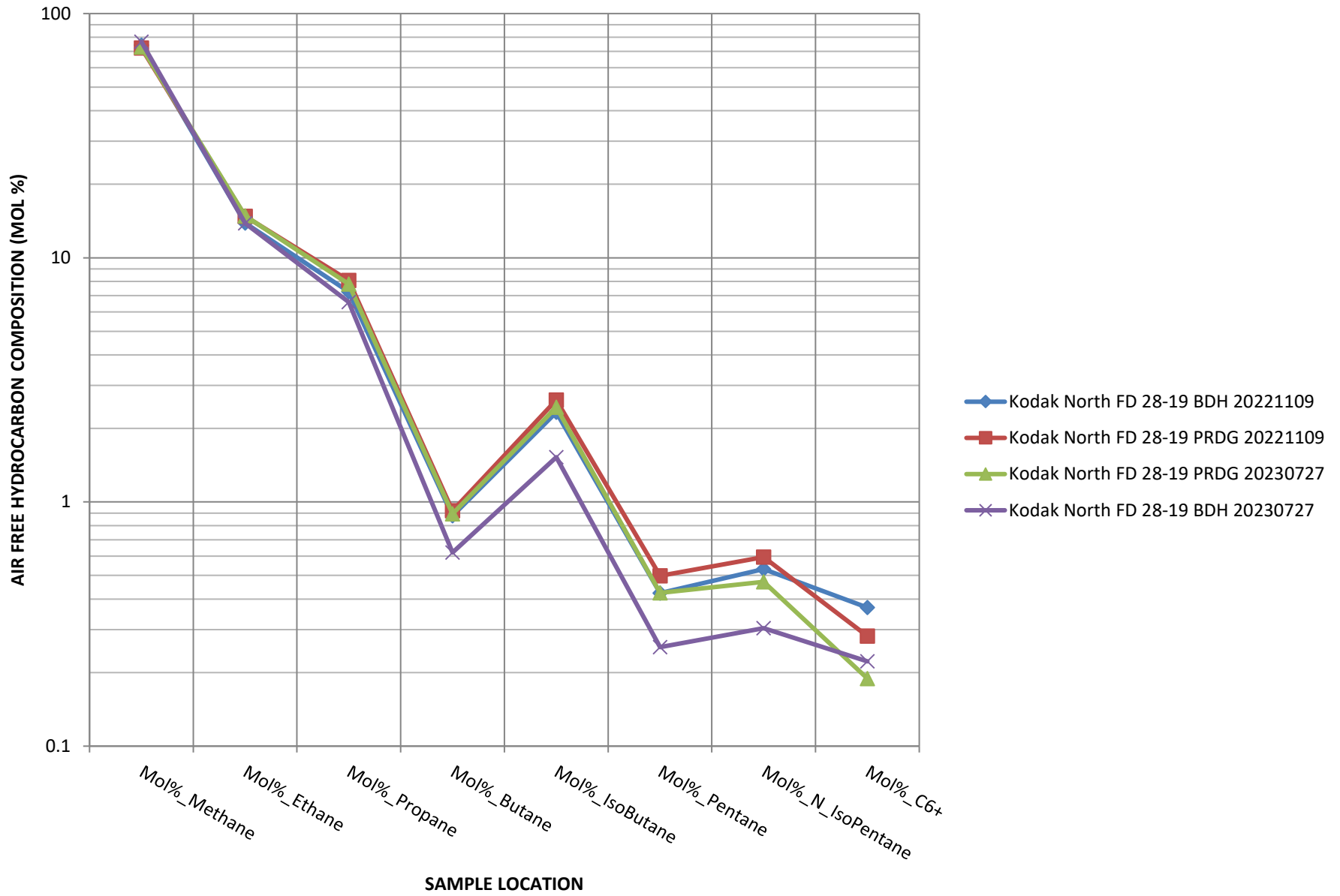
# Total Percent Hydrocarbons

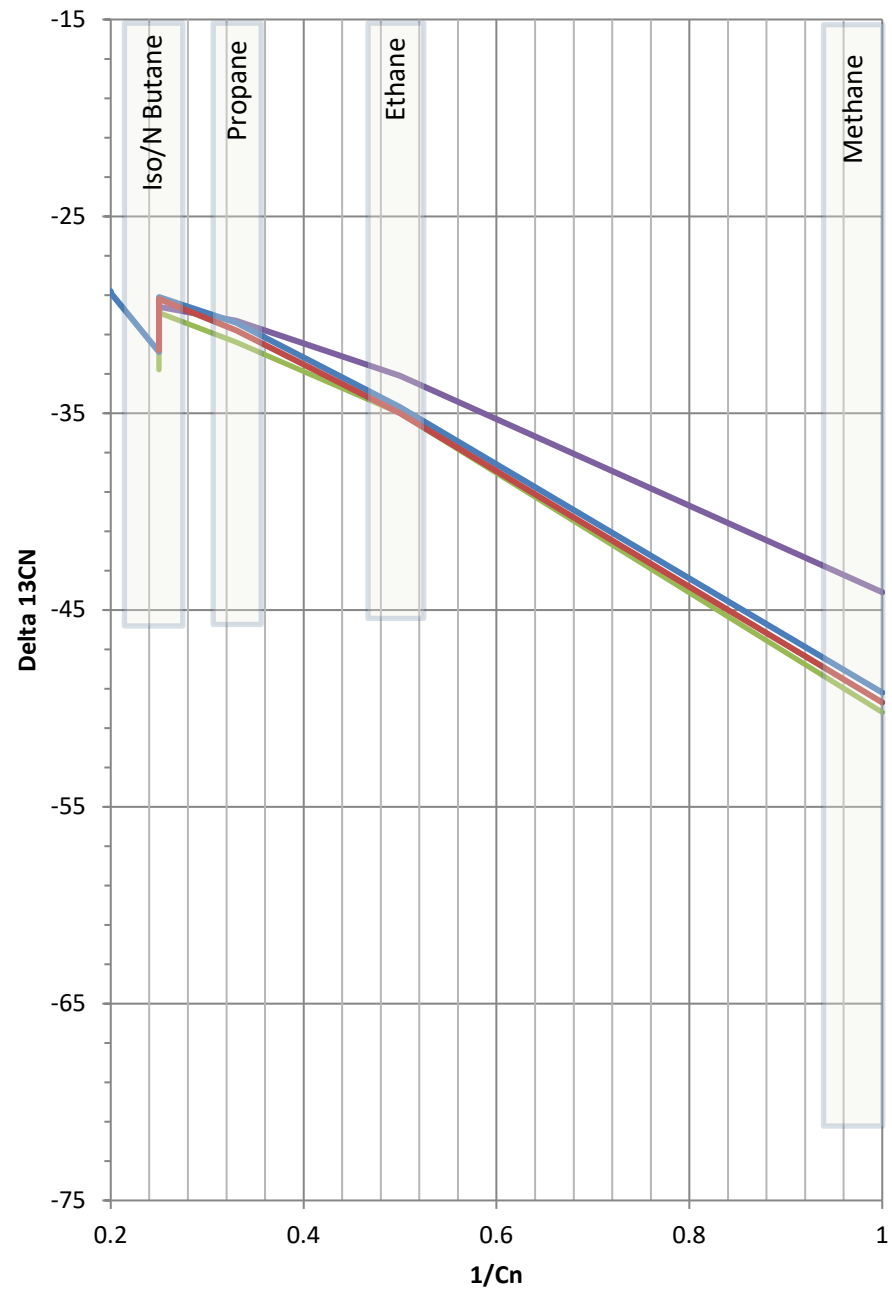


# GAS COMPOSITION



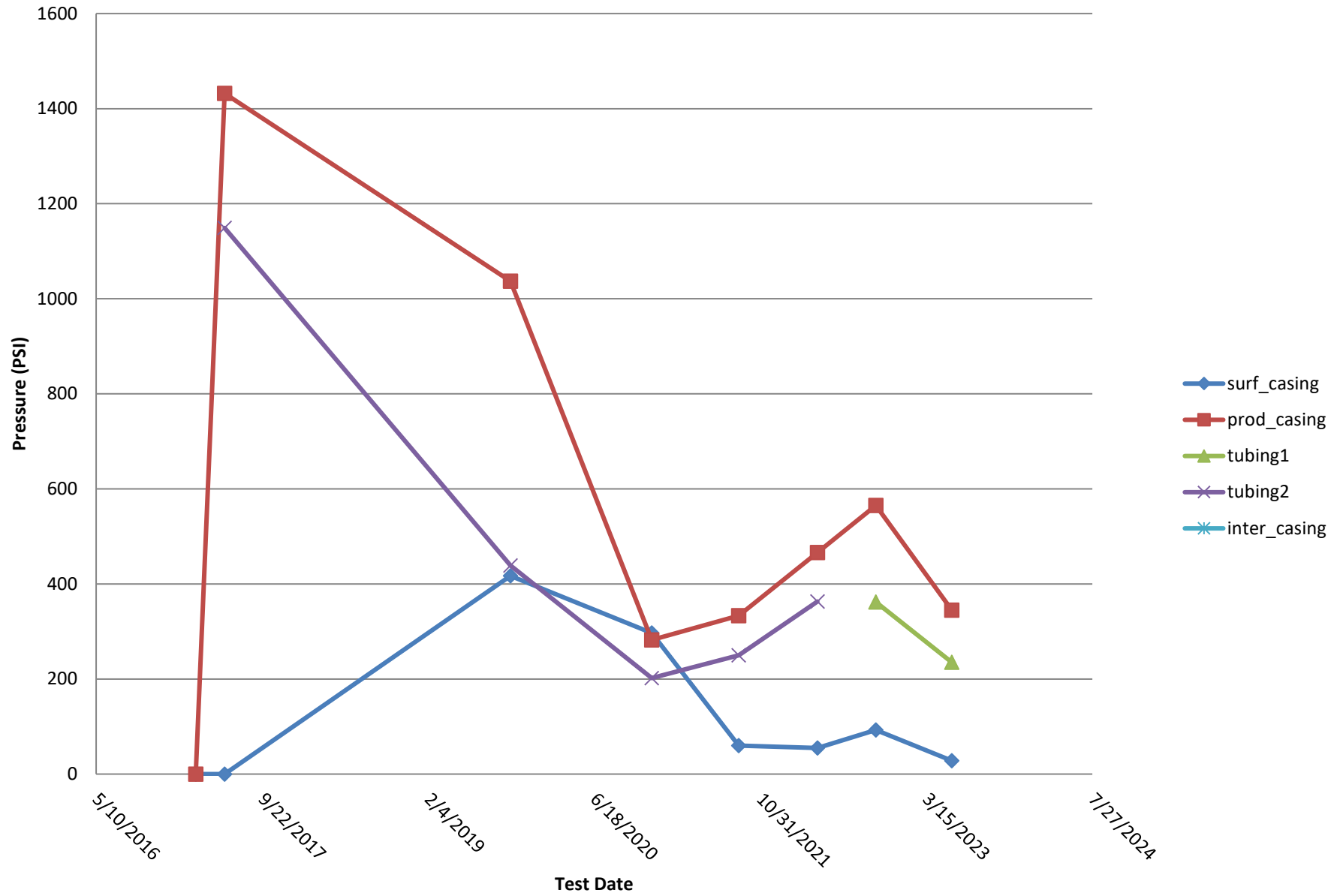
# HYDROCARBON COMPOSITION



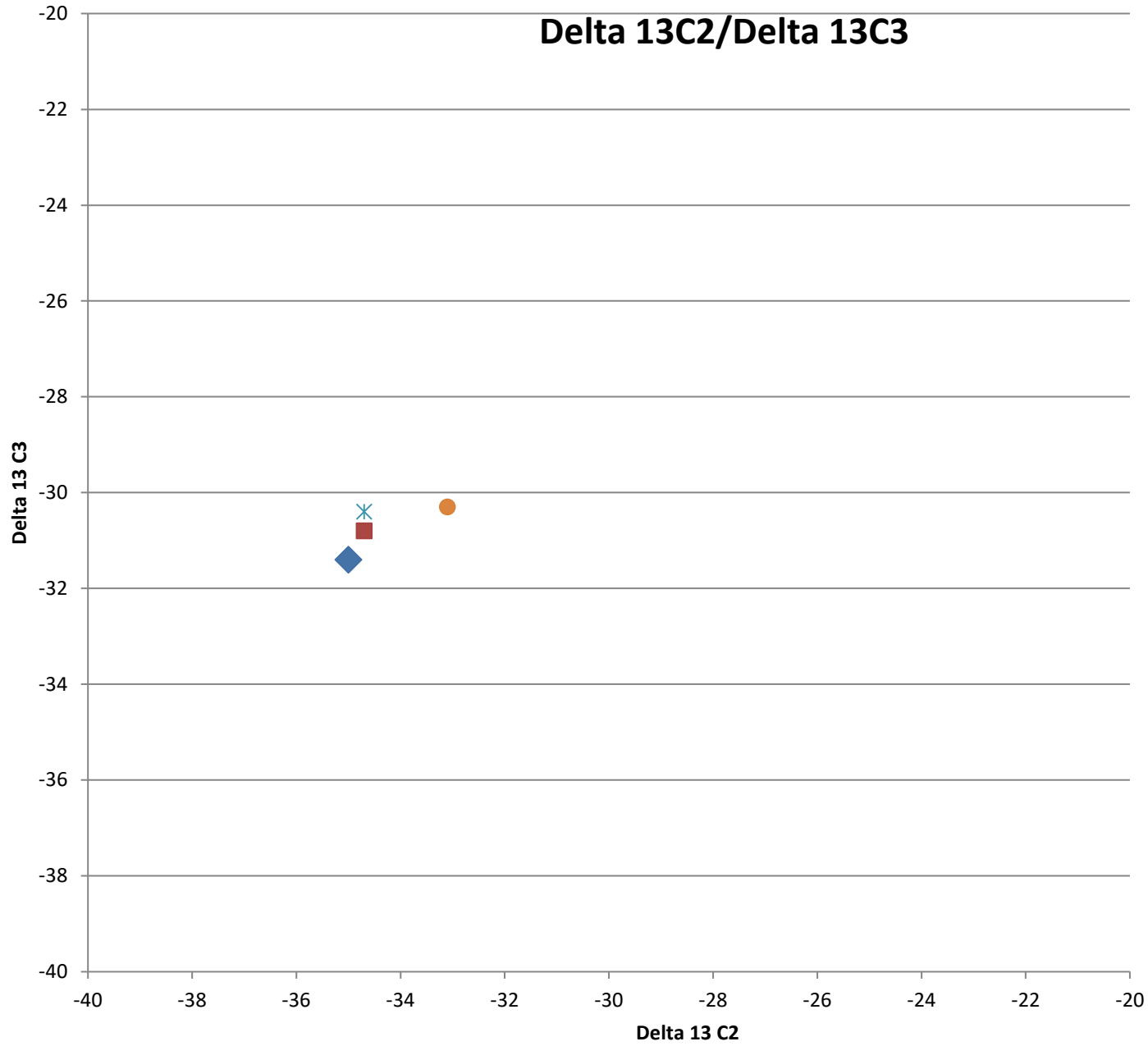


- Kodak North FD 28-19 BDH
- Kodak North FD 28-19 PRDG
- Kodak North FD 28-19 PRDG
- Kodak North FD 28-19 BDH

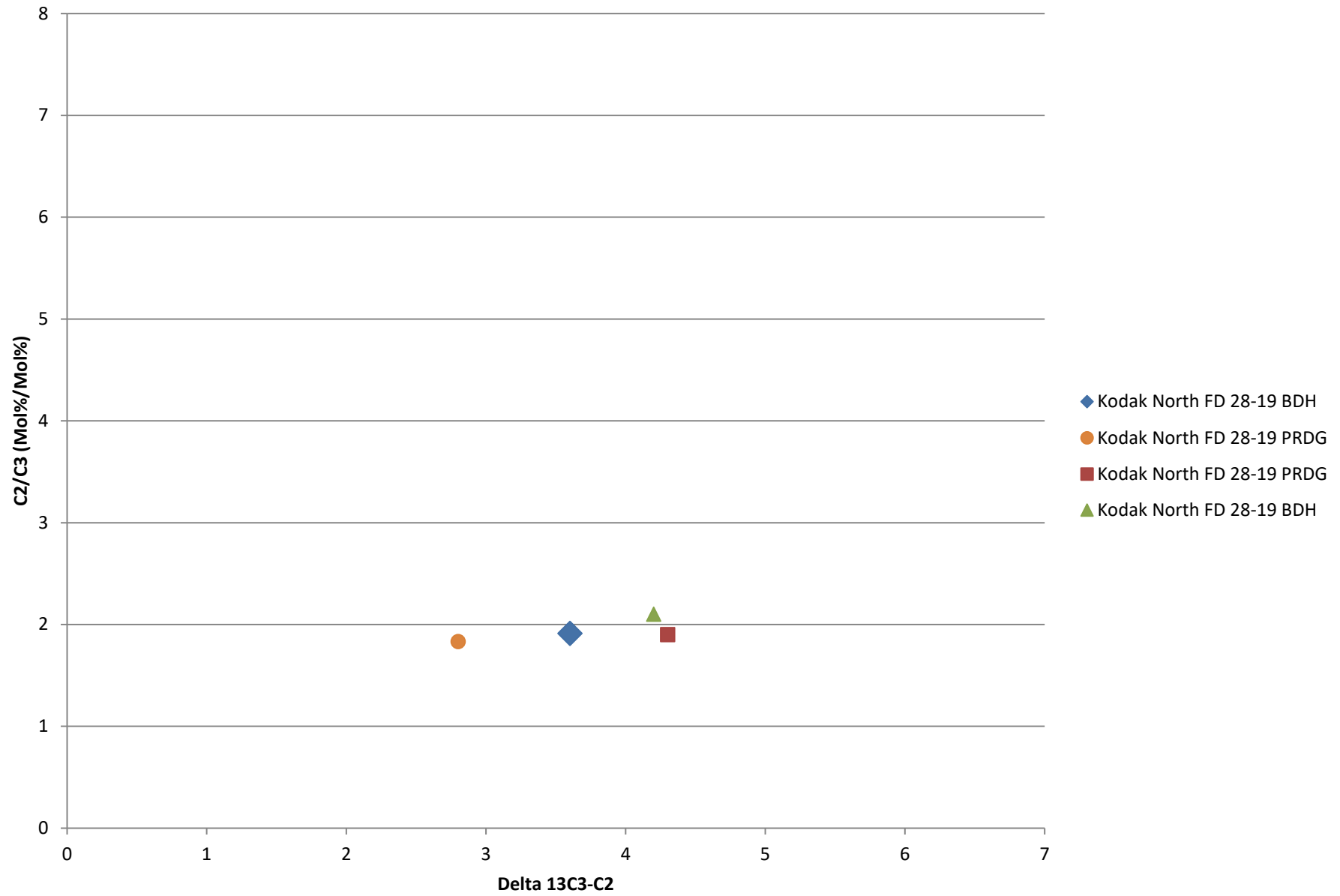
# Bradenhead Test Summary



# Delta 13C2/Delta 13C3



# Delta13 C2/C3 vs. Delta 13C3-C2



# Delta 13 IC4/ Delta NC4

