



Legend

- Underground Flowline Location
(Collected via Trimble GPS)
- - - Excavation Extent
(Collected via Trimble GPS)
- + Laboratory Sample Location
(Collected via Trimble GPS)
- + Field Screening Sample Location
(Collected via Trimble GPS)

Notes

All locations are approximate unless otherwise noted.

GPS – Global Positioning System

0 ft. 20 ft. 40 ft.

Image Source: Google Earth; June 2021
Projection: WGS 84 UTM Zone 13 North



Legend

Excavation Extent
(Collected via Trimble GPS)

Laboratory Sample Location
(Collected via Trimble GPS)

Notes

All locations are approximate unless otherwise noted.

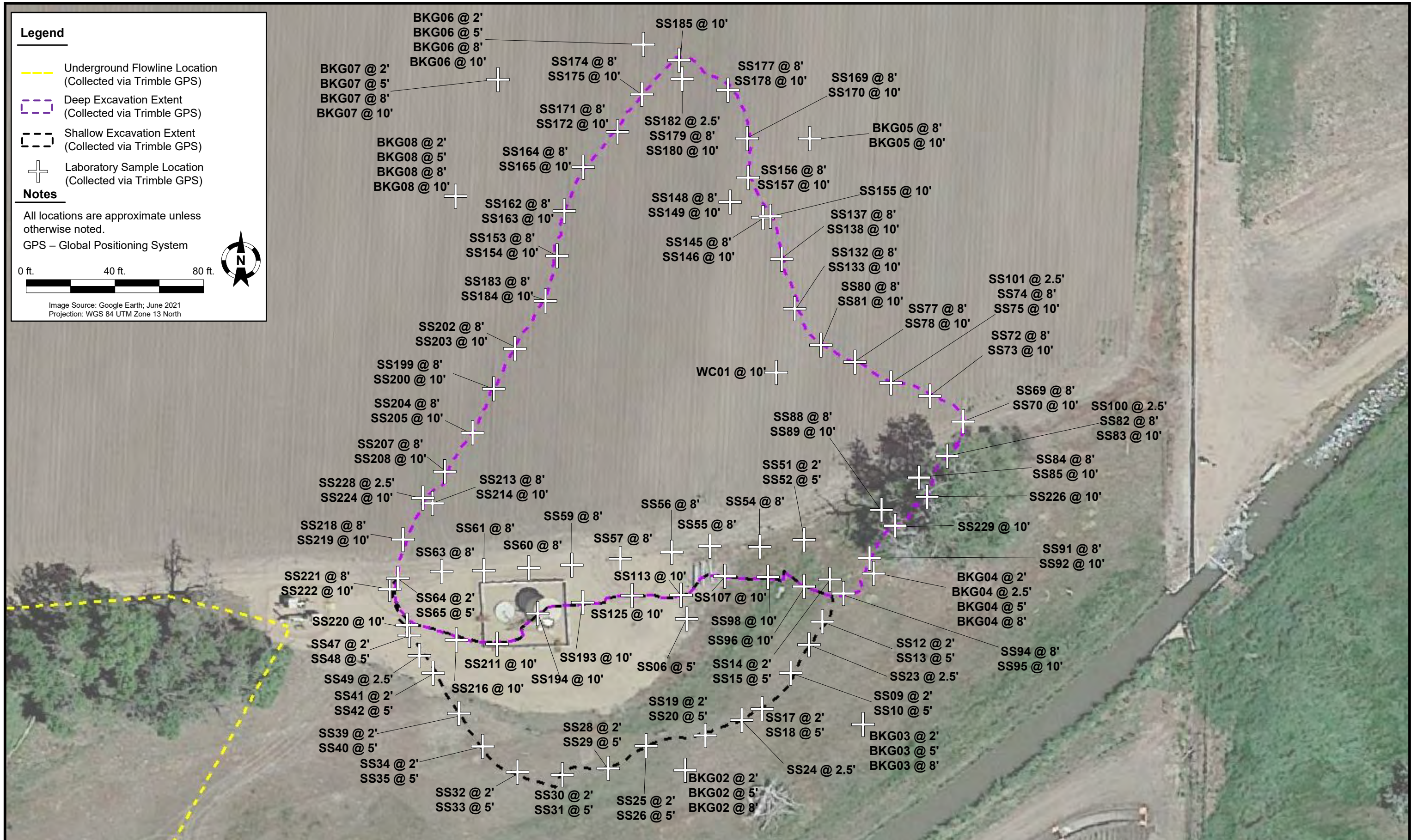
GPS – Global Positioning System

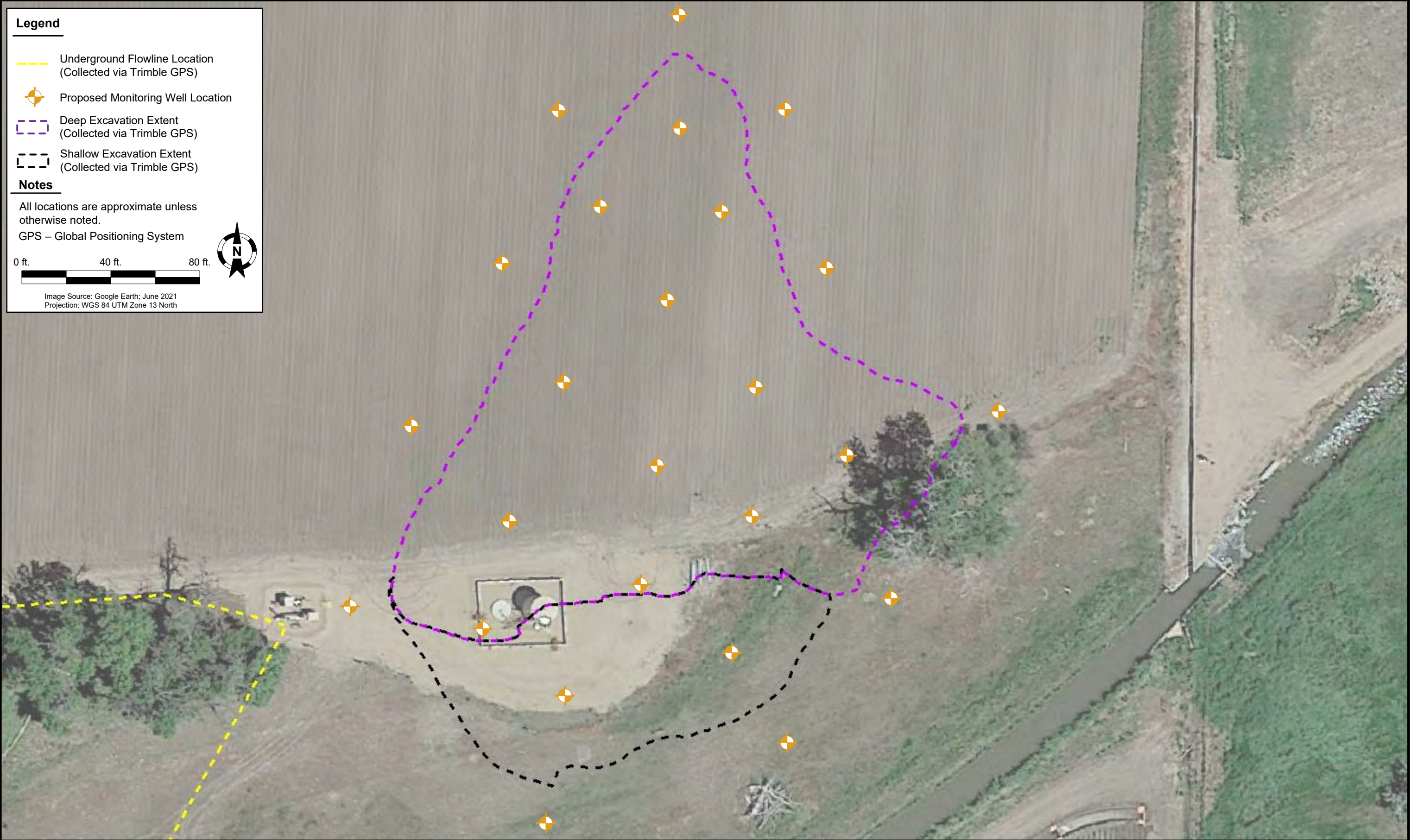
0 ft.

10 ft.

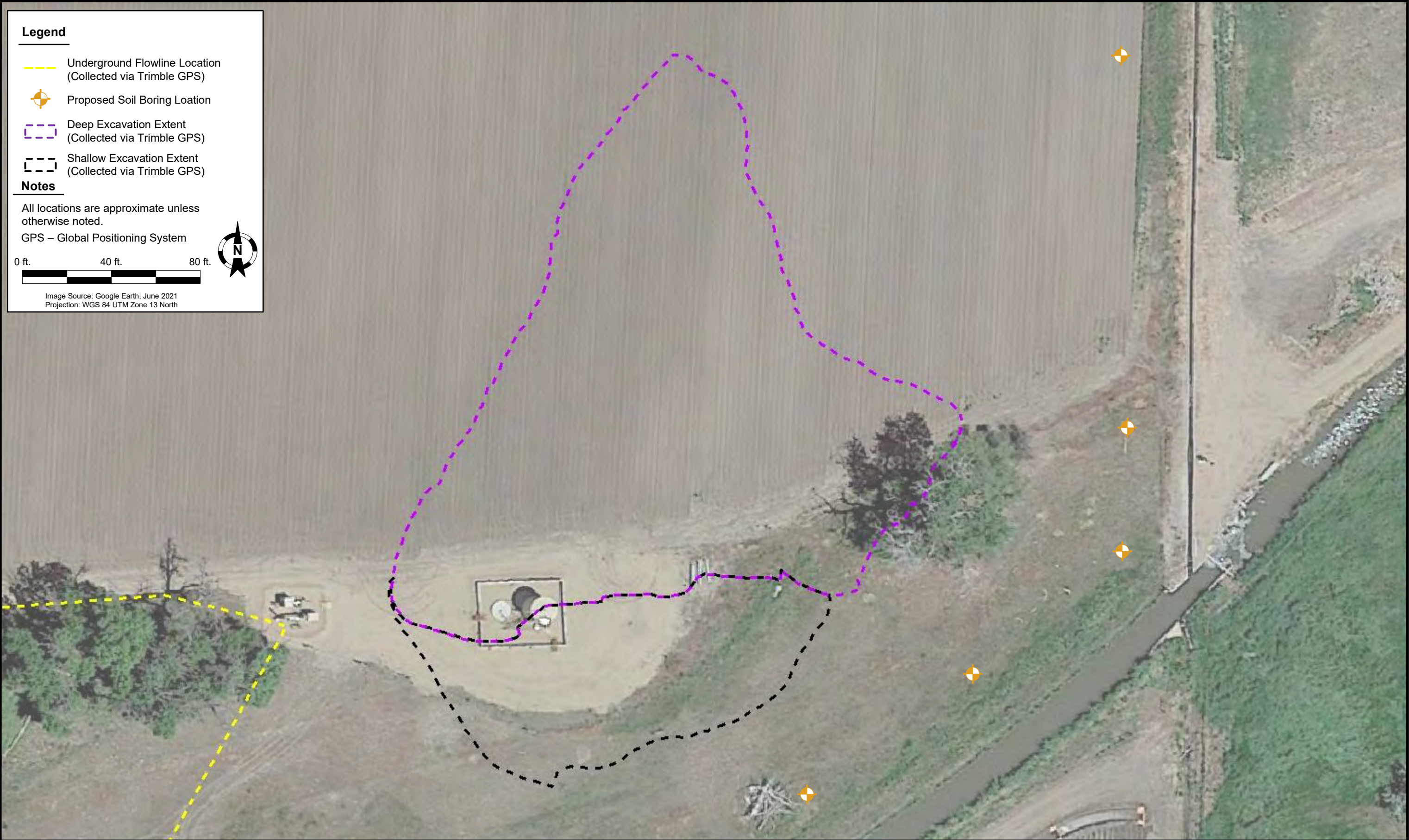
20 ft.

Image Source: Google Earth; June 2021
Projection: WGS 84 UTM Zone 13 North





DATE: May 8, 2023	 Tasman, Inc. 6855 W. 119 th Ave. Broomfield, CO 80020	PDC Energy, Inc. – DJ Basin Former Werning 3,4-2 Tank Battery NENW, Section 2, Township 4 North, Range 66 West Weld County, Colorado	PROPOSED MONITORING WELL LOCATION MAP	FIGURE 5
DESIGNED BY: C. Hamlin				
DRAWN BY: B. Goldade				



DATE: March 30, 2023	 Tasman, Inc. 6855 W. 119 th Ave. Broomfield, CO 80020	PDC Energy, Inc. – DJ Basin Former Werning 3,4-2 Tank Battery NENW, Section 2, Township 4 North, Range 66 West Weld County, Colorado	PROPOSED SOIL BORING LOCATION MAP	FIGURE 6
DESIGNED BY: C. Hamlin				
DRAWN BY: K. Shepherd				