



MDS Energy Development, LLC PLUG & ABANDON POST JOB REPORT

**RALPH ALLEN #2 05-123-05384
S:10 T:7N R:59W Weld CO**

CallSheet #: 88050
Proposal #: 70618



PLUG & ABANDON Post Job Report

Attention: Matthew Hoffman | (970) 380-0811 | matthew.hoffman@iptwell.com
MDS Energy Development, LLC
409 Butler Road Suite A | Kittanning, PA 16201

Dear Matthew Hoffman,

Thank you for the opportunity to provide cementing services on this well. American Cementing strives to achieve complete customer satisfaction. If you have any questions regarding the services or data provided, please contact American Cementing at any time.

Sincerely,

Aimee Sankovich

Field Engineer I | (307) 689-0323 | aimee.sankovich@americacementing.com

Field Office 1716 E Allison Rd, Cheyenne, WY 82007
Phone: (307) 414-0049

Job Details & Summary

Geometry

Type	Function	OD (in)	ID (in)	Weight (lb/ft)	Top (ft)	Bottom (ft)	Excess (%)
Casing	Outer	10.75	10.192	32.75	0	167	0
Open Hole	Outer		8.75		167	5965	0
Tubing	Inner	2.875	2.441	6.4	0	5965	0

Equipment / People

Unit Type	Unit
Cement Trailer Float	CTF-215
Cement Utility Float	CUF-161
Cement Pump Float	CPF-182
Cement Trailer Float	CTF-408

Timing

Event	Date/Time
Call Out	7/31/2023 08:00
Depart Facility	7/31/2023 11:00
On Location	7/31/2023 13:00
Rig Up Iron	7/31/2023 13:30
Job Started	7/31/2023 21:50
Job Completed	8/1/2023 02:30
Rig Down Iron	8/1/2023 02:45
Depart Location	8/1/2023 05:00

General Job Information

Metrics	Value
Well Fluid Density	8.5 lb/gal
Well Fluid Type	Water
Calculated Displacement	26 bbls
Actual Displacement	26 bbls
Total Spacer to Surface	0 bbls
Total CMT to Surface	1 bbls

Job Details

Metrics	Value
Flare Prior to Job	No
Flare Prior to Job	0 units
Flare During Job	No
Flare During Job	0 units
Flare at End of Job	No
Flare at End of Job	0 units
Well Full Prior to Job	Yes
Well Fluid Density Into Well	8.3 lb/gal
Well Fluid Density Out of Well	8.3 lb/gal

Job Details (cont.)

Metrics	Value
BHCT	165 °F
BHST	198 °F

Water Analysis

Metrics	Value	Recommended
Water Source	Upright Rig Tank	
Temperature	65 °F	50-80 °F
pH Level	7	5.5-8.5
Chlorides	0 mg/L	0-3000 mg/L
Total Alkalinity	140	0-1000
Total Hardness	250 mg/L	0-500 mg/L
Carbonates	40 mg/L	0-100 mg/L
Sulfates	<200 mg/L	0-1500 mg/L
Potassium	0 mg/L	0-3000 mg/L
Iron	0 mg/L	0-300 mg/L

Circulation

Lost Circulation Experienced
No

Job Logs

Line	Event	Date (MM/DD/YY)	Time (HH:MM)	Density (lb/gal)	Pump Rate (bpm)	Pump Volume (bbls)	Pipe Pressure (psi)	Comment
1	Callout	7/31/2023	08:00					Crew called out requested on location for 1445
2	Depart For Location	7/31/2023	11:00					Crew departed for location
3	Arrive On Location	7/31/2023	13:00					Crew arrived on location
4	Safety Meeting	7/31/2023	13:15					Safety meeting
5	Rig Up Iron	7/31/2023	13:30					Spotted and rigged up all equipment
6	Waiting	7/31/2023	14:00					Waiting on rig to finish running tubing into hole
7	Safety Meeting	7/31/2023	21:30					Safety meeting
8	Fill Lines	7/31/2023	21:50	8.34	3	5	500	Fill lines with 5 bbls fresh water
9	Pressure Test Lines	7/31/2023	21:53					Pressure test lines to 3000 psi
10	Pump Spacer	7/31/2023	21:55	8.34	3	5	600	Pump 5 bbls water spacer
11	Pump Cement	7/31/2023	22:04	15.8	3	16.3	50	Pump 16.3 bbls cement @ 15.8 ppg (80 sks, 1.15 Y, 4.98 gal/sk)
12	Pump Displacement	7/31/2023	22:10	8.34	3	26	100	Pump 26 bbls fresh water displacement
13	Shutdown	7/31/2023	22:22					Shutdown
14	Other	7/31/2023	22:30					Rig tried to pull out of hole, could not pull tubing, rig tied on to reverse circulate well, pumped did not gain, flow, shutdown, circulated well, circulated cement out, rig tried to work tubing and possibly thought tubing may have a hole. Crew was released at 0230.
15	Safety Meeting	8/1/2023	02:30					Safety meeting
16	Rig Down Iron	8/1/2023	02:45					Rigged down all equipment
17	Depart Location	8/1/2023	05:00					Crew departed location

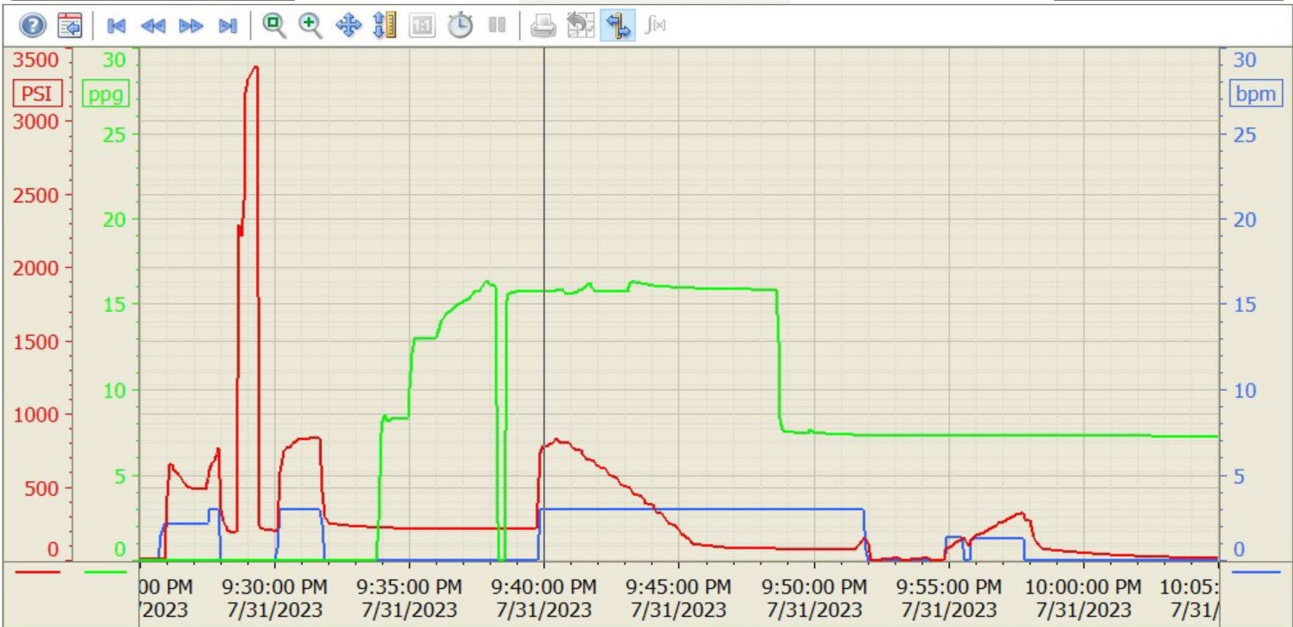
Pump Diagrams

Summary Trend

MDS



Lease: RALPH ALLEN #2



8/1/2023 9:35:14 AM