

Interim Reclamation and Stormwater Inspection

August 23, 2023

Operator: KERR MCGEE OIL & GAS ONSHORE LP - #47120

Location ID: 332308

Inspection Document #: 697504822

Weld County, CO

SWNE Section 30 T5N R67W

Chris Binschus
Reclamation Specialist, COGCC



COLORADO

Energy & Carbon Management
Commission

Department of Natural Resources

Inspection Photos
Location Name: CROISSANT 30-13
Location ID: 332308



Photo 1. Photo illustrates unmanaged weeds have been removed.



Photo 2. Photo illustrates temporary road block put in by the surface owner to resist vehicle access, as Operator representatives continue to travel an unauthorized route.



Inspection Photos
Location Name: CROISSANT 30-13
Location ID: 332308

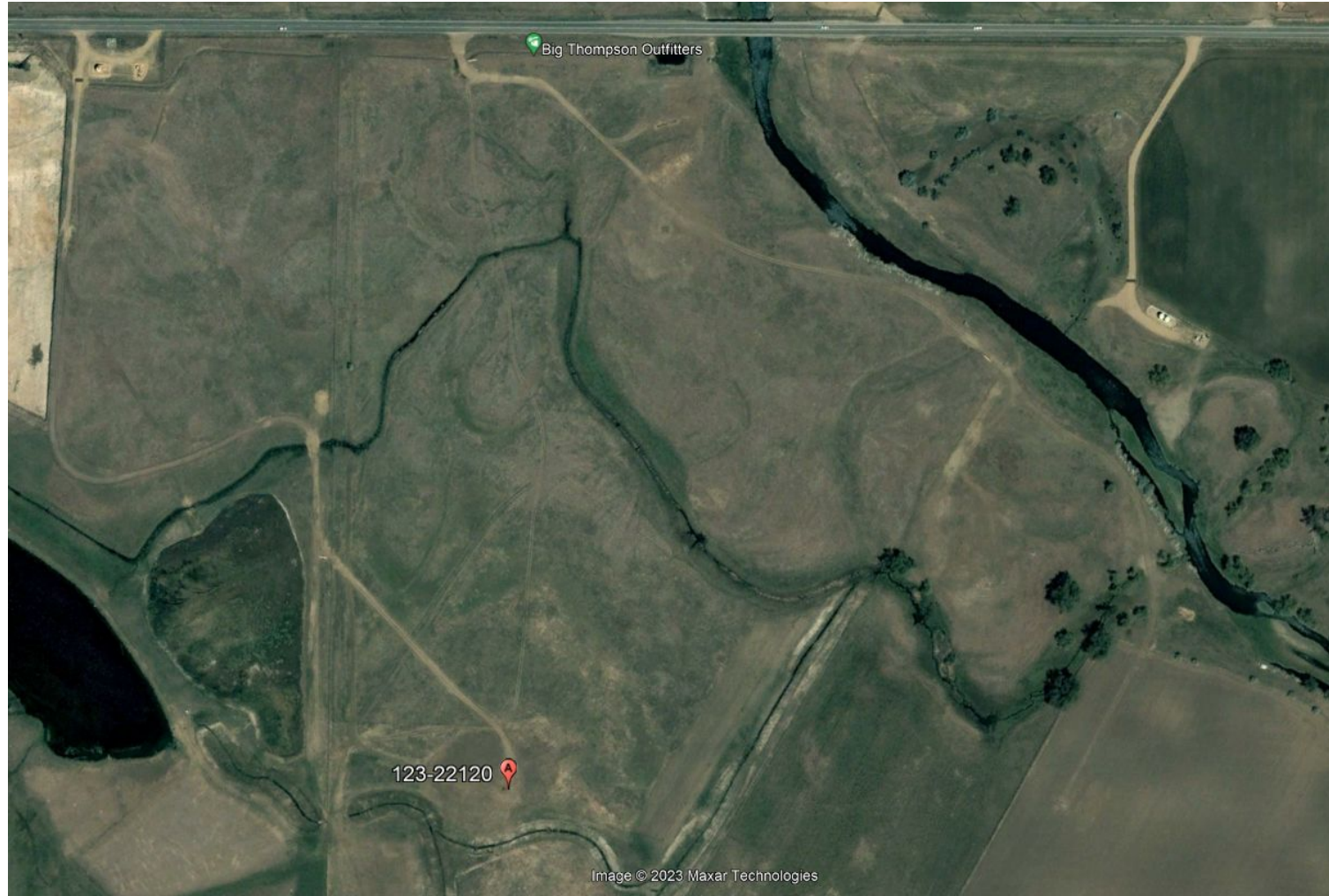


Photo 3. Google Earth aerial imagery from 5/23/2006 illustrates the original access road routes for the Croissant and Betz wells prior to DRMS mining activities.

Inspection Photos
Location Name: CROISSANT 30-13
Location ID: 332308



Photo 4. Google Earth aerial imagery from 10/14/2017 illustrates the eastern access road in question was built for DRMS mining purposes, not for oil and gas; oil and gas does share the road.

Inspection Photos
Location Name: CROISSANT 30-13
Location ID: 332308

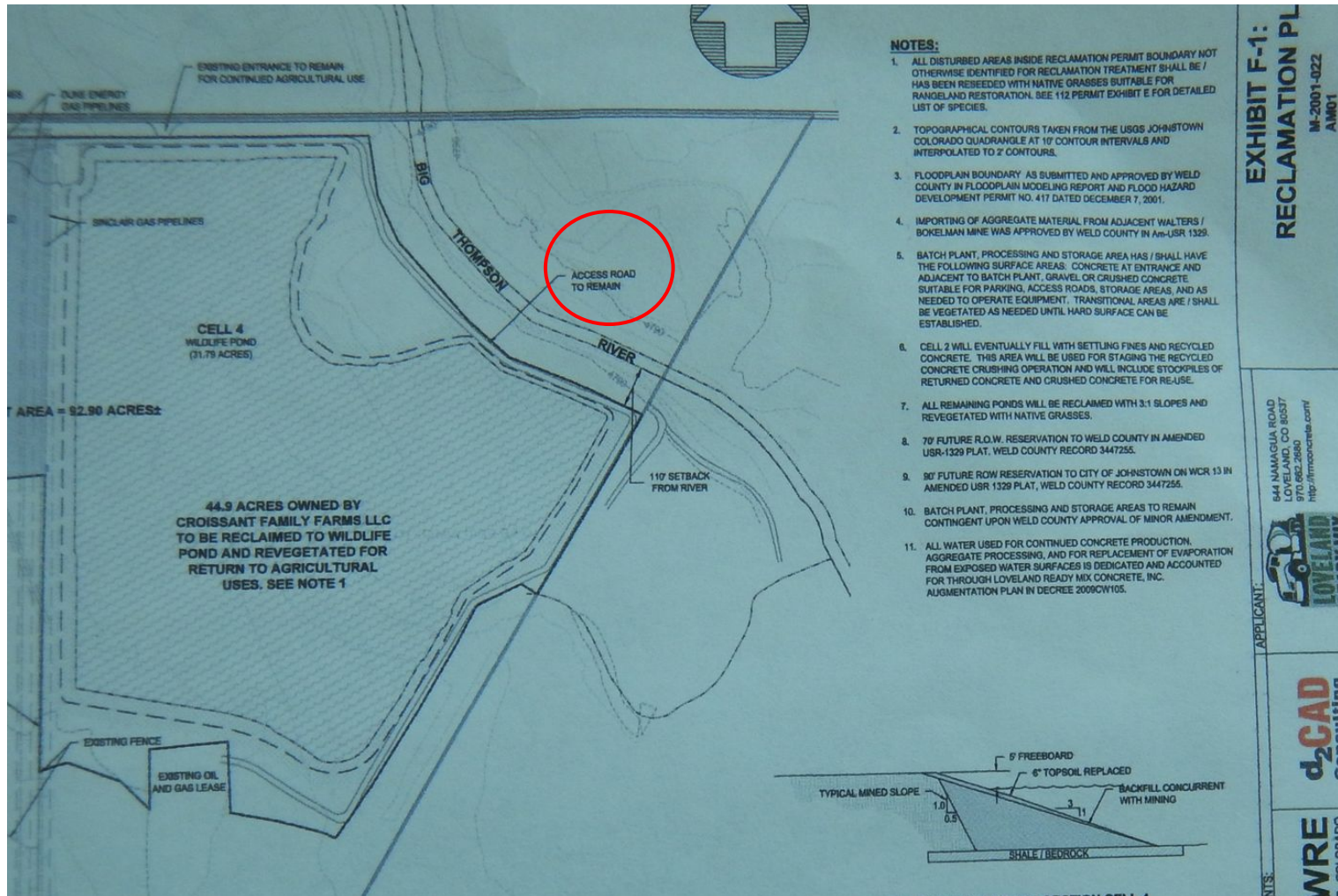


Photo 5. DRMS Reclamation Plan Exhibit F-1 illustrates the eastern access road in question was indeed built for DRMS mining purposes, not for oil and gas. DRMS Reclamation Plan indicates the access road to remain.

