



MDS Energy Development, LLC PLUG & ABANDON POST JOB REPORT

**DORIS #1 05-123-12695
S:10 T:7N R:59W Weld CO**

CallSheet #: 88100
Proposal #: 70698



PLUG & ABANDON Post Job Report

Attention: Matthew Hoffman | (970) 380-0811 | matthew.hoffman@iptwell.com
MDS Energy Development, LLC
409 Butler Road Suite A | Kittanning, PA 16201

Dear Matthew Hoffman,

Thank you for the opportunity to provide cementing services on this well. American Cementing strives to achieve complete customer satisfaction. If you have any questions regarding the services or data provided, please contact American Cementing at any time.

Sincerely,

Aimee Sankovich

Field Engineer I | (307) 689-0323 | aimee.sankovich@americancementing.com

Field Office 1716 E Allison Rd, Cheyenne, WY 82007
Phone: (307) 414-0049

Job Details & Summary

Geometry

Type	Function	OD (in)	ID (in)	Weight (lb/ft)	Top (ft)	Bottom (ft)	Excess (%)
Casing	Outer	10.75	10.192	32.75	0	319	0
Open Hole	Outer		7.875		319	6789	0
Tubing	Inner	2.875	2.441	6.4	0	5965	0

Equipment / People

Unit Type	Unit
Cement Trailer Float	CTF-215
Cement Utility Float	CUF-162
Cement Pump Float	CPF-182

Timing

Event	Date/Time
Call Out	8/3/2023 11:00
Depart Facility	8/3/2023 11:30
On Location	8/3/2023 12:00
Rig Up Iron	8/3/2023 12:15
Job Started	8/3/2023 12:30
Job Completed	8/3/2023 23:59
Rig Down Iron	8/4/2023 00:15
Depart Location	8/4/2023 00:30

General Job Information

Metrics	Value
Well Fluid Density	8.34 lb/gal
Well Fluid Type	Water
Calculated Displacement	30 bbls
Actual Displacement	29 bbls
Total Spacer to Surface	0 bbls
Total CMT to Surface	1 bbls

Job Details

Metrics	Value
Flare Prior to Job	No
Flare Prior to Job	0 units
Flare During Job	No
Flare During Job	0 units
Flare at End of Job	No
Flare at End of Job	0 units
Well Full Prior to Job	Yes
Well Fluid Density Into Well	8.3 lb/gal
Well Fluid Density Out of Well	8.3 lb/gal

Job Details (cont.)

Metrics	Value
BHCT	170 °F
BHST	203 °F

Water Analysis

Metrics	Value	Recommended
Water Source	Upright Rig Tank	
Temperature	60 °F	50-80 °F
pH Level	7	5.5-8.5
Chlorides	0 mg/L	0-3000 mg/L
Total Alkalinity	140	0-1000
Total Hardness	250 mg/L	0-500 mg/L
Carbonates	80 mg/L	0-100 mg/L
Sulfates	<200 mg/L	0-1500 mg/L
Potassium	0 mg/L	0-3000 mg/L
Iron	0 mg/L	0-300 mg/L

Circulation

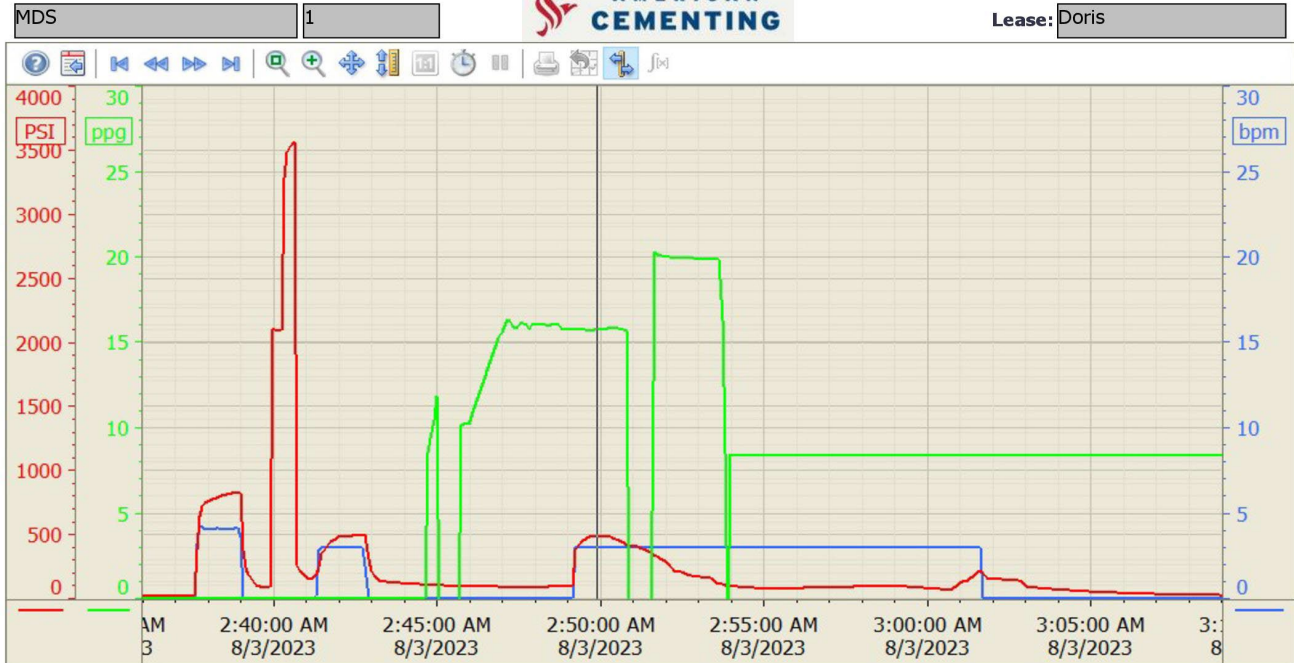
Lost Circulation Experienced
No

Job Logs

Line	Event	Date (MM/DD/YY)	Time (HH:MM)	Density (lb/gal)	Pump Rate (bpm)	Pump Volume (bbls)	Pipe Pressure (psi)	Comment
1	Callout	8/2/2023	20:00					Crew called out requested on location for 0200
2	Depart For Location	8/2/2023	23:59					Crew departed for location
3	Arrive On Location	8/3/2023	02:00					Crew arrived on location
4	Safety Meeting	8/3/2023	02:05					Safety meeting
5	Rig Up Iron	8/3/2023	02:15					Spotted and rigged up all equipment
6	Safety Meeting	8/3/2023	02:30					Safety meeting
7	Fill Lines	8/3/2023	03:02	8.34	3	5	500	Fill lines with 5 bbls fresh water
8	Pressure Test Lines	8/3/2023	03:04					Pressure test lines to 3000 psi
9	Pump Spacer	8/3/2023	03:06	8.34	3	5	500	Pump 5 bbls fresh water spacer
10	Pump Cement	8/3/2023	03:14	15.8	3	13.3	50	Pump 13.3 bbls cement @ 15.8 ppg (65 sks, 1.15 Y, 4.98 gal/sk)
11	Pump Displacement	8/3/2023	03:17	8.34	3	29	50	Pump 29 bbls fresh water displacement
12	Shutdown	8/3/2023	03:28					Shutdown
13	Other	8/3/2023	03:32					POOH
14	Pump Spacer	8/3/2023	05:17	8.34	3	10	250	Pump 10 bbls fresh water spacer
15	Pump Cement	8/3/2023	05:21	15.8	3	10.3	50	Pump 10.3 bbls cement @ 15.8 ppg (50 sks, 1.16 Y, 5.01 gal/sk)
16	Pump Displacement	8/3/2023	05:26	8.34	3	14	50	Pump 14 bbls displacement
17	Shutdown	8/3/2023	05:33					Shutdown
18	Other	8/3/2023	05:40					POOH, Waiting on rig to tag cement after 4 hours
19	Pump Spacer	8/3/2023	11:23	8.34	3	10	250	Pump 10 bbls fresh water spacer
20	Pump Cement	8/3/2023	11:33	15.8	3	13.4	50	Pump 13.4 bbls cement @ 15.8 ppg (65 sks, 1.16 Y, 5.01 gal/sk)
21	Pump Displacement	8/3/2023	11:39	8.34	3	7.5	50	Pump 7.5 bbls fresh water displacement
22	Shutdown	8/3/2023	11:41					Shutdown
23	Other	8/3/2023	11:45					POOH, Waiting on rig to tag cement after 4 hours
24	Pump Spacer	8/3/2023	16:40	8.34	3	10	250	Pump 10 bbls fresh water spacer
25	Pump Cement	8/3/2023	16:47	15.8	3	22.7	50	Pump 22.7 bbls cement @ 15.8 ppg (110 sks, 1.16 Y, 5.01 gal/sk)
26	Pump Displacement	8/3/2023	16:56	8.34	3	1	50	Pump 1 bbls fresh water displacement
27	Shutdown	8/3/2023	16:57					Shutdown
28	Other	8/3/2023	17:00					POOH, Waiting on rig to tag cement after 4 hours
29	Pump Spacer	8/3/2023	21:37	8.34	3	10	100	Pump 10 bbls fresh water spacer
30	Pump Cement	8/3/2023	21:41	15.8	3	22.7	50	Pump bbls cement @ 15.8 ppg (110 sks, 1.16 Y, 5.01 gal/sk)
31	Pump Displacement	8/3/2023	21:48	8.34	3	1	50	Pump 1 bbls fresh water displacement
32	Shutdown	8/3/2023	21:49					Shutdown
33	Other	8/3/2023	21:52					POOH, Waiting on rig to tag cement after 4 hours
34	Other	8/3/2023	22:00					End of day one ticket

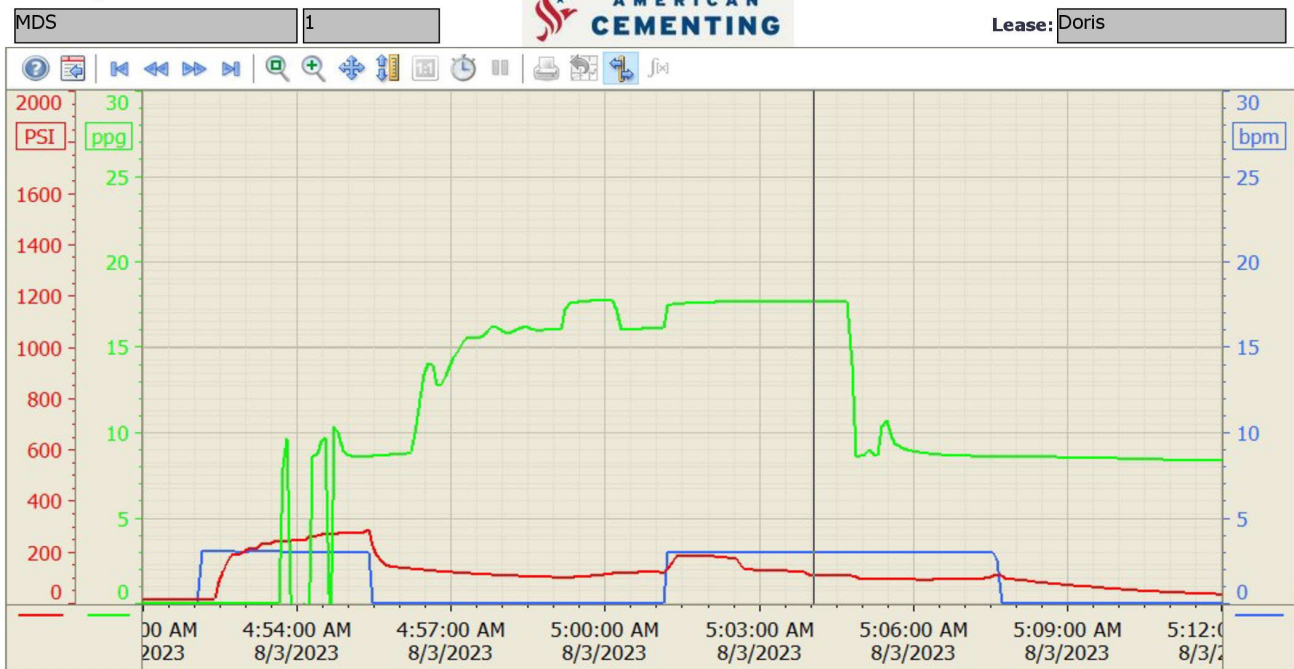
Pump Diagrams

Summary Trend



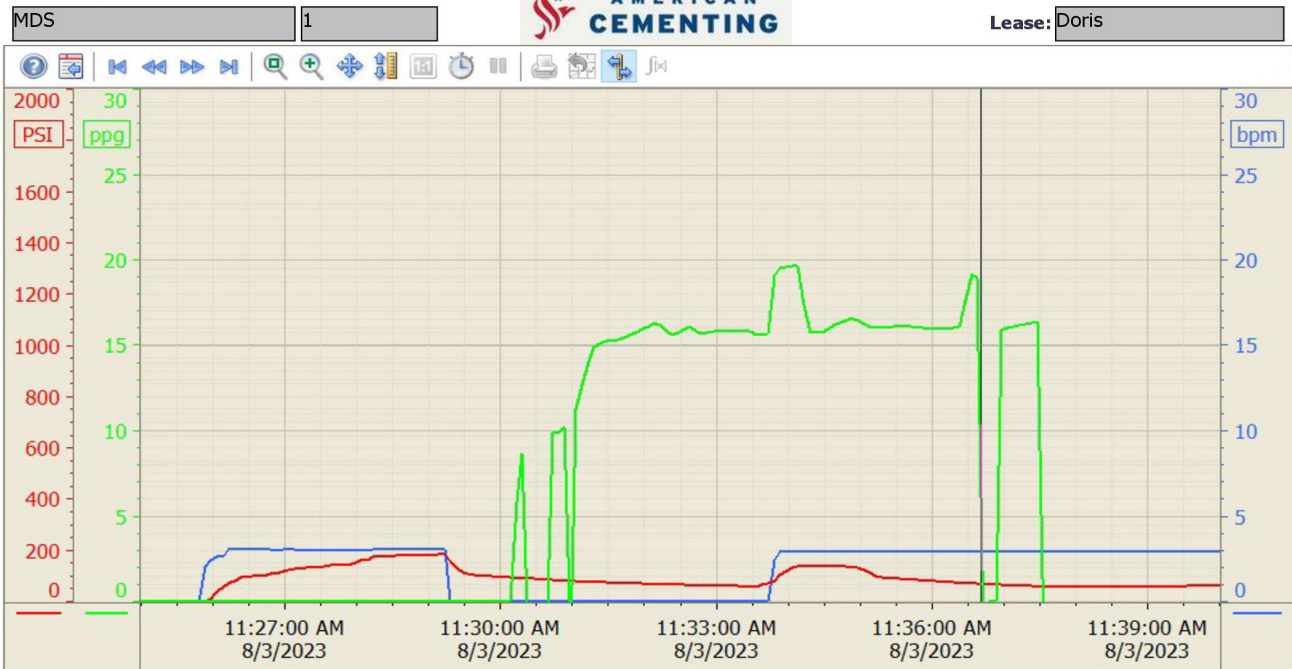
8/3/2023 5:27:50 AM

Summary Trend



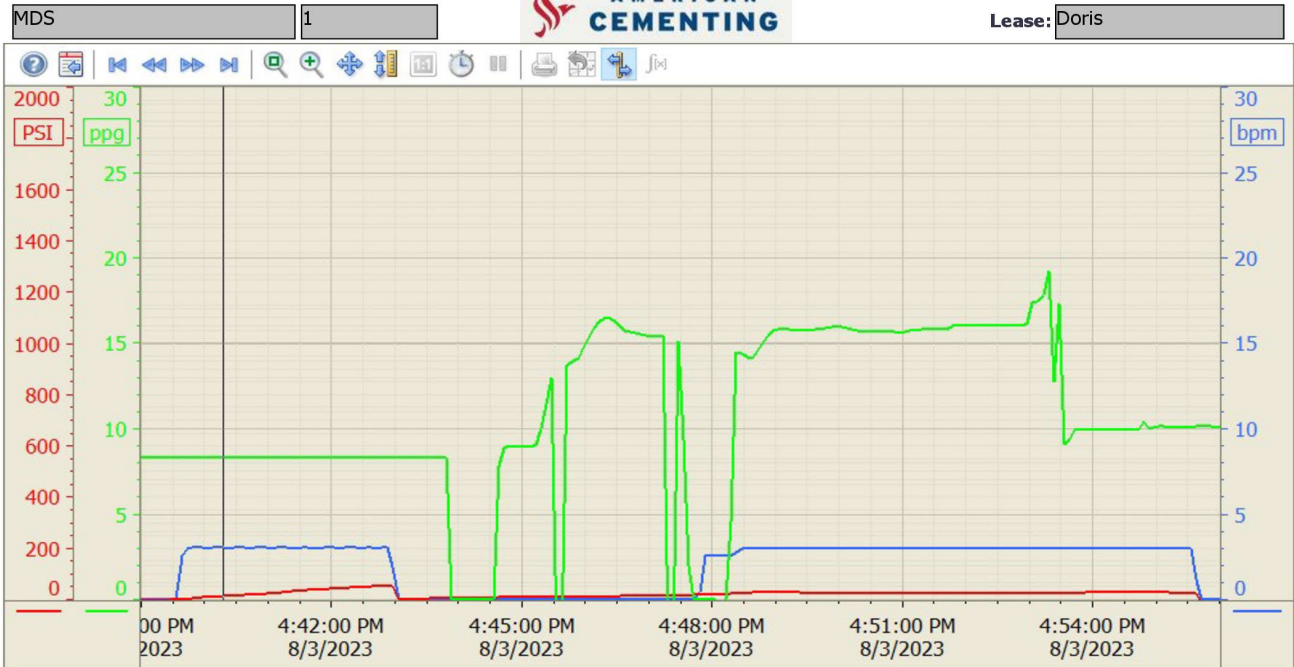
8/3/2023 5:29:10 AM

Summary Trend



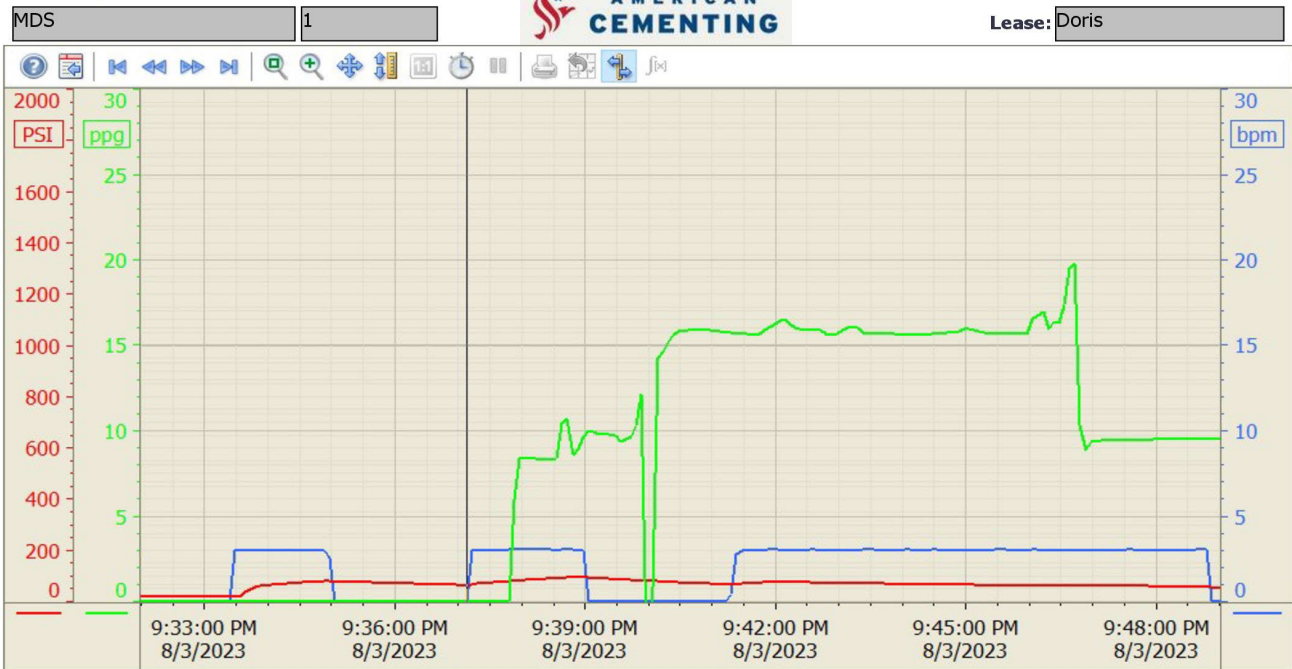
8/3/2023 8:49:26 PM

Summary Trend



8/3/2023 8:50:40 PM

Summary Trend



8/4/2023 4:34:52 PM