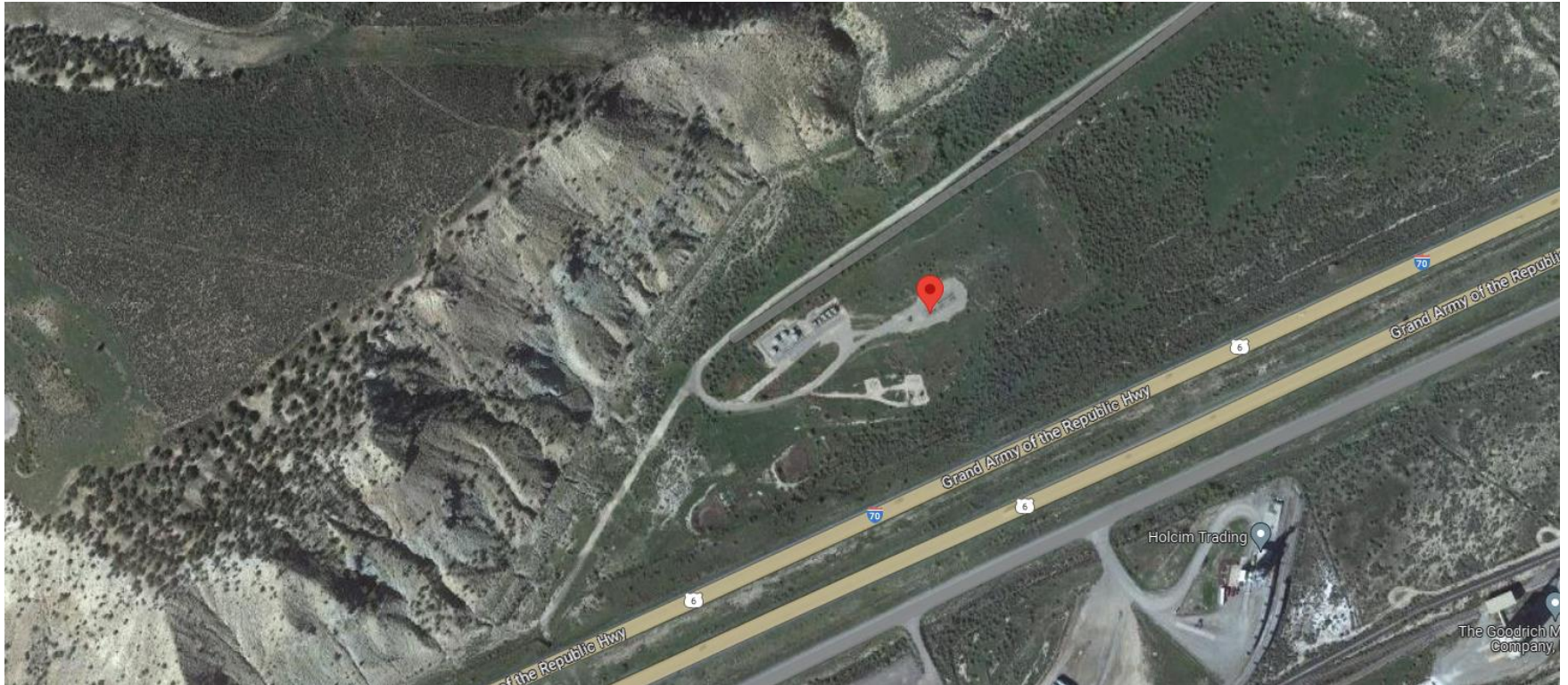


Storm Water Management and Erosion control
Location Name: TEP Rocky Mountain LLC CLOUGH RWF 522-23 Pad
Location # 335132



**Location Overview: Location is within High Priority/Density
Habitat areas & Bald Eagle Roost Site.
Section/Township/Range: 23 6S94W**



COLORADO
Energy & Carbon Management
Commission
Department of Natural Resources

Storm water Management and Erosion control
Location Name: TEP Rocky Mountain LLC CLOUGH RWF 522-23 Pad
Location # 335132



North West corner of location.



North East corner of location.



South West corner of location.



South East corner of location.

Storm water Management and Erosion control
Location Name: TEP Rocky Mountain LLC CLOUGH RWF 522-23 Pad
Location # 335132



Photo # 8411 Stockpiled soils/insufficient BMP's



Photo # 8422 Stockpiled soils/insufficient BMP's

Storm water Management and Erosion control
Location Name: TEP Rocky Mountain LLC CLOUGH RWF 522-23 Pad
Location # 335132



Photo # 8423 Stockpiled soils/insufficient BMP's



Photo # 8424 Stockpiled soils/insufficient BMP's

Storm water Management and Erosion control
Location Name: TEP Rocky Mountain LLC CLOUGH RWF 522-23 Pad
Location # 335132



Photo # 8425 Stockpiled soils & gravel/insufficient BMP's



Photo # 8426 Stockpiled soils & gravel/insufficient BMP's

Storm water Management and Erosion control
Location Name: TEP Rocky Mountain LLC CLOUGH RWF 522-23 Pad
Location # 335132



Photo # 8435 Stockpiled soils/insufficient BMP's