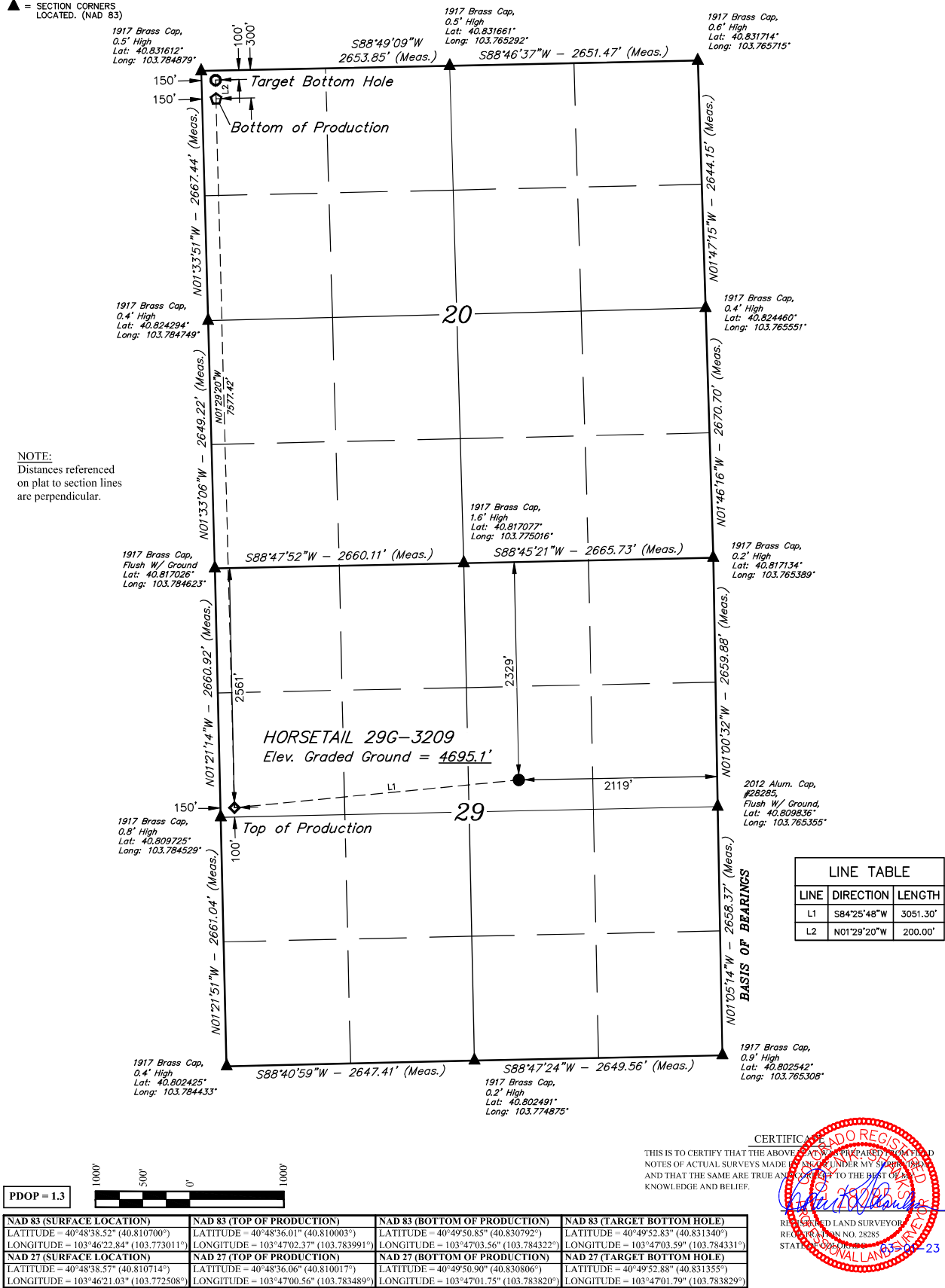


**LEGEND:**

- = SURFACE LOCATION.
- ◆ = TOP OF PRODUCTION.
- ◇ = BOTTOM OF PRODUCTION.
- = TARGET BOTTOM HOLE.
- ▲ = SECTION CORNERS LOCATED. (NAD 83)

**T10N, R57W, 6th P.M.**

**NOTE:**  
Distances referenced on plat to section lines are perpendicular.



CERTIFICATE OF REGISTRATION  
 THIS IS TO CERTIFY THAT THE ABOVE MAP WAS PREPARED BY ME AND THAT THE SAME ARE TRUE AND CORRECT TO THE BEST OF MY KNOWLEDGE AND BELIEF.



NAD 83 (SURFACE LOCATION)	NAD 83 (TOP OF PRODUCTION)	NAD 83 (BOTTOM OF PRODUCTION)	NAD 83 (TARGET BOTTOM HOLE)
LATITUDE = 40°48'38.52" (40.810700°)	LATITUDE = 40°48'36.01" (40.810003°)	LATITUDE = 40°49'50.85" (40.830792°)	LATITUDE = 40°49'52.83" (40.831340°)
LONGITUDE = 103°46'22.84" (103.773011°)	LONGITUDE = 103°47'02.37" (103.783991°)	LONGITUDE = 103°47'03.56" (103.784322°)	LONGITUDE = 103°47'03.59" (103.784331°)
NAD 27 (SURFACE LOCATION)	NAD 27 (TOP OF PRODUCTION)	NAD 27 (BOTTOM OF PRODUCTION)	NAD 27 (TARGET BOTTOM HOLE)
LATITUDE = 40°48'38.57" (40.810714°)	LATITUDE = 40°48'36.06" (40.810017°)	LATITUDE = 40°49'50.90" (40.830806°)	LATITUDE = 40°49'52.88" (40.831355°)
LONGITUDE = 103°46'21.03" (103.772508°)	LONGITUDE = 103°47'00.56" (103.783489°)	LONGITUDE = 103°47'01.75" (103.783820°)	LONGITUDE = 103°47'01.79" (103.783829°)

**BASIS OF BEARINGS**  
BASIS OF BEARINGS IS A G.P.S. OBSERVATION.

**BASIS OF ELEVATION**  
SPOT ELEVATION LOCATED AT THE NORTHEAST CORNER OF SECTION 13, T9N, R58W, 6th P.M. TAKEN FROM THE GATEHOOK SPRING, QUADRANGLE, COLORADO, WELD COUNTY, 7.5 MINUTE QUAD (TOPOGRAPHIC MAP) PUBLISHED BY THE UNITED STATES DEPARTMENT OF THE INTERIOR, GEOLOGICAL SURVEY. SAID ELEVATION IS MARKED AS BEING 4679 FEET.



**UELS, LLC**  
 Corporate Office \* 85 South 200 East  
 Vernal, UT 84078 \* (435) 789-1017



**FUNDARE RESOURCES OPERATING COMPANY, LLC**

**HORSETAIL 29G-3209**  
 SW 1/4 NE 1/4, SECTION 29, T10N, R57W, 6th P.M.  
 WELD COUNTY, COLORADO

SURVEYED BY	DALLAS NIELSEN, G.W.	12-10-15	SCALE
DRAWN BY	D.R.B.	03-01-23	1" = 1000'

**WELL LOCATION PLAT**