

FUNDARE RESOURCES OPERATING COMPANY, LLC

**WELD COUNTY
SEC 29-T10N-R57W
HORSETAIL 29G-3209**

OWB

Plan: PROPOSAL 1

Standard Planning Report

28 April, 2023

Project: WELD COUNTY
Site: SEC 29-T10N-R57W
Well: HORSETAIL 29G-3209
Wellbore: OWB
Design: PROPOSAL 1

PROJECT DETAILS: WELD COUNTY
 Geodetic System: US State Plane 1983
 Datum: North American Datum 1983
 Ellipsoid: GRS 1980
 Zone: Colorado Northern Zone
 System Datum: Mean Sea Level



Azimuths to True North
 Magnetic North: 7.16°
 Magnetic Field
 Strength: 52069.4nT
 Dip Angle: 67.03°
 Date: 4/27/2023
 Model: IGRF2020

WELL DETAILS: HORSETAIL 29G-3209

+N/-S	+E/-W	Northing	Easting	4695.00	Latitude	Longitude	Slot
0.00	0.00	1542840.31	3478040.08		40.810700°N	103.773011°W	

FORMATION TOP DETAILS

No formation data is available

SECTION DETAILS

Sec	MD	Inc	Azi	TVD	+N/-S	+E/-W	Dleg	TFace	VFace	Target
1	0.00	0.00	0.00	0.00	0.00	0.00	0.00	0.00	0.00	
2	100.00	0.00	0.00	100.00	0.00	0.00	0.00	0.00	0.00	
3	1713.41	32.27	253.13	1629.47	-128.40	-423.41	0.00	253.13	44.29	
4	6152.75	32.27	253.13	5383.17	-816.20	-2691.51	0.00	0.00	281.55	
5	7138.32	90.00	359.31	5946.00	-253.75	-3039.55	10.00	103.79	934.59	LP - HORSETAIL 29G-3209
6	14713.15	90.00	359.31	5946.00	7320.53	-3130.21	0.00	0.00	7961.34	BPZ - HORSETAIL 29G-3209
7	14714.23	90.00	359.29	5946.00	7321.62	-3130.22	2.00	-90.00	7962.34	PBHL - HORSETAIL 29G-3209
8	14912.82	90.00	359.29	5946.00	7520.19	-3132.68	0.00	0.00	8146.59	PBHL - HORSETAIL 29G-3209

ANNOTATIONS

MD	Inc	Azi	TVD	+N/-S	+E/-W	VFace	Departure	Annotation
100.00	0.00	0.00	100.00	0.00	0.00	0.00	0.00	Start Build 2.00
1713.41	32.27	253.13	1629.47	-128.40	-423.41	44.29	442.45	Start 4439.33 hold at 1713.41 MD
6152.75	32.27	253.13	5383.17	-816.20	-2691.51	281.55	2812.54	Start DLS 10.00 TFO 103.79
7138.32	90.00	359.31	5946.00	-253.75	-3039.55	934.59	3558.27	Start 7574.82 hold at 7138.32 MD
14713.15	90.00	359.31	5946.00	7320.53	-3130.21	7961.34	11133.10	Start DLS 2.00 TFO 90.00
14714.23	90.00	359.29	5946.00	7321.62	-3130.22	7962.34	11134.18	Start 198.59 hold at 14714.23 MD
14912.82	90.00	359.29	5946.00	7520.19	-3132.68	8146.59	11332.77	TD at 14912.82

DESIGN TARGET DETAILS

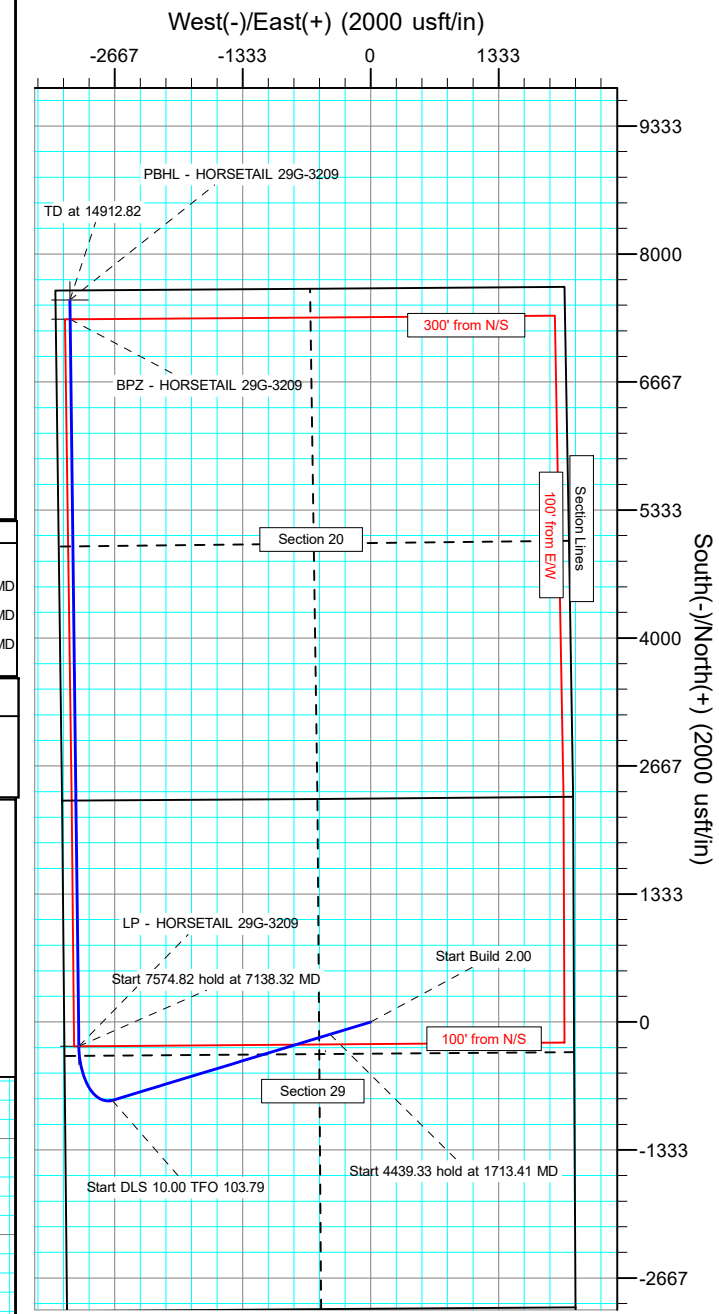
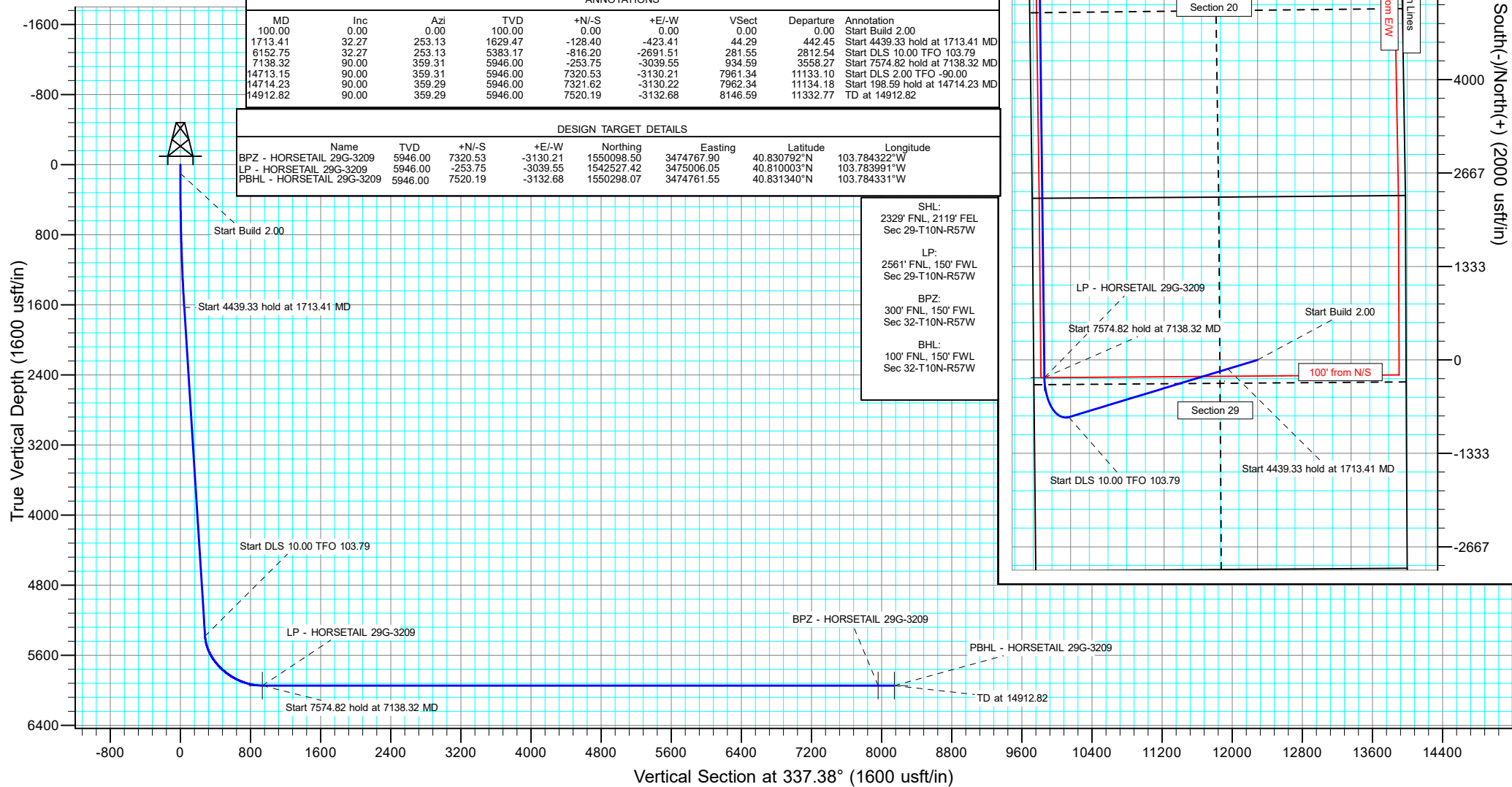
Name	TVD	+N/-S	+E/-W	Northing	Easting	Latitude	Longitude
BPZ - HORSETAIL 29G-3209	5946.00	7320.53	-3130.21	1550099.50	3474767.90	40.830732°N	103.784322°W
LP - HORSETAIL 29G-3209	5946.00	-253.75	-3039.55	1542527.42	3475006.05	40.810003°N	103.783951°W
PBHL - HORSETAIL 29G-3209	5946.00	7520.19	-3132.68	1550298.07	3474761.55	40.831340°N	103.784331°W

SHL:
 2329' FNL, 2119' FEL
 Sec 29-T10N-R57W

LP:
 2561' FNL, 150' FWL
 Sec 29-T10N-R57W

BPZ:
 300' FNL, 150' FWL
 Sec 32-T10N-R57W

BHL:
 100' FNL, 150' FWL
 Sec 32-T10N-R57W



Planning Report

Database:	EDM 5000.16 Single User Db	Local Co-ordinate Reference:	Well HORSETAIL 29G-3209
Company:	FUNDARE RESOURCES OPERATING COMPANY, LLC	TVD Reference:	KB 25' @ 4720.00usft
Project:	WELD COUNTY	MD Reference:	KB 25' @ 4720.00usft
Site:	SEC 29-T10N-R57W	North Reference:	True
Well:	HORSETAIL 29G-3209	Survey Calculation Method:	Minimum Curvature
Wellbore:	OWB		
Design:	PROPOSAL 1		

Project	WELD COUNTY		
Map System:	US State Plane 1983	System Datum:	Mean Sea Level
Geo Datum:	North American Datum 1983		
Map Zone:	Colorado Northern Zone		

Site	SEC 29-T10N-R57W		
Site Position:		Northing:	1,545,225.22 usft
From:	Lat/Long	Easting:	3,480,103.77 usft
Position Uncertainty:	0.00 usft	Slot Radius:	13.200 in
		Latitude:	40.817134°N
		Longitude:	103.765389°W

Well	HORSETAIL 29G-3209		
Well Position	+N/-S	0.00 usft	Northing: 1,542,840.32 usft
	+E/-W	0.00 usft	Easting: 3,478,040.08 usft
Position Uncertainty		0.00 usft	Latitude: 40.810700°N
Grid Convergence:		1.12 °	Longitude: 103.773011°W
			Wellhead Elevation: usft
			Ground Level: 4,695.00 usft

Wellbore	OWB				
Magnetics	Model Name	Sample Date	Declination (°)	Dip Angle (°)	Field Strength (nT)
	IGRF2020	4/27/2023	7.16	67.03	52,069.44865345

Design	PROPOSAL 1			
Audit Notes:				
Version:	Phase:	PROTOTYPE	Tie On Depth:	0.00
Vertical Section:	Depth From (TVD) (usft)	+N/-S (usft)	+E/-W (usft)	Direction (°)
	0.00	0.00	0.00	337.38

Plan Survey Tool Program	Date	4/28/2023		
Depth From (usft)	Depth To (usft)	Survey (Wellbore)	Tool Name	Remarks
1	0.00	14,912.82 PROPOSAL 1 (OWB)	MWD	
			OWSG MWD - Standard	

Planning Report

Database:	EDM 5000.16 Single User Db	Local Co-ordinate Reference:	Well HORSETAIL 29G-3209
Company:	FUNDARE RESOURCES OPERATING COMPANY, LLC	TVD Reference:	KB 25' @ 4720.00usft
Project:	WELD COUNTY	MD Reference:	KB 25' @ 4720.00usft
Site:	SEC 29-T10N-R57W	North Reference:	True
Well:	HORSETAIL 29G-3209	Survey Calculation Method:	Minimum Curvature
Wellbore:	OWB		
Design:	PROPOSAL 1		

Plan Sections										
Measured Depth (usft)	Inclination (°)	Azimuth (°)	Vertical Depth (usft)	+N/-S (usft)	+E/-W (usft)	Dogleg Rate (°/100ft)	Build Rate (°/100ft)	Turn Rate (°/100ft)	TFO (°)	Target
0.00	0.00	0.00	0.00	0.00	0.00	0.00	0.00	0.00	0.00	
100.00	0.00	0.00	100.00	0.00	0.00	0.00	0.00	0.00	0.00	
1,713.41	32.27	253.13	1,629.47	-128.40	-423.41	2.00	2.00	0.00	253.13	
6,152.75	32.27	253.13	5,383.17	-816.20	-2,691.51	0.00	0.00	0.00	0.00	
7,138.32	90.00	359.31	5,946.00	-253.75	-3,039.55	10.00	5.86	10.77	103.79	LP - HORSETAIL 29G
14,713.15	90.00	359.31	5,946.00	7,320.53	-3,130.21	0.00	0.00	0.00	0.00	BPZ - HORSETAIL 29G
14,714.23	90.00	359.29	5,946.00	7,321.62	-3,130.22	2.00	0.00	-2.00	-90.00	PBHL - HORSETAIL 29G
14,912.82	90.00	359.29	5,946.00	7,520.19	-3,132.68	0.00	0.00	0.00	0.00	PBHL - HORSETAIL 29G

Planning Report

Database:	EDM 5000.16 Single User Db	Local Co-ordinate Reference:	Well HORSETAIL 29G-3209
Company:	FUNDARE RESOURCES OPERATING COMPANY, LLC	TVD Reference:	KB 25' @ 4720.00usft
Project:	WELD COUNTY	MD Reference:	KB 25' @ 4720.00usft
Site:	SEC 29-T10N-R57W	North Reference:	True
Well:	HORSETAIL 29G-3209	Survey Calculation Method:	Minimum Curvature
Wellbore:	OWB		
Design:	PROPOSAL 1		

Planned Survey										
Measured Depth (usft)	Inclination (°)	Azimuth (°)	Vertical Depth (usft)	+N/-S (usft)	+E/-W (usft)	Vertical Section (usft)	Dogleg Rate (°/100ft)	Build Rate (°/100ft)	Turn Rate (°/100ft)	
0.00	0.00	0.00	0.00	0.00	0.00	0.00	0.00	0.00	0.00	
100.00	0.00	0.00	100.00	0.00	0.00	0.00	0.00	0.00	0.00	
Start Build 2.00										
200.00	2.00	253.13	199.98	-0.51	-1.67	0.17	2.00	2.00	0.00	
300.00	4.00	253.13	299.84	-2.03	-6.68	0.70	2.00	2.00	0.00	
400.00	6.00	253.13	399.45	-4.55	-15.02	1.57	2.00	2.00	0.00	
500.00	8.00	253.13	498.70	-8.09	-26.68	2.79	2.00	2.00	0.00	
600.00	10.00	253.13	597.47	-12.63	-41.65	4.36	2.00	2.00	0.00	
700.00	12.00	253.13	695.62	-18.17	-59.91	6.27	2.00	2.00	0.00	
800.00	14.00	253.13	793.06	-24.70	-81.43	8.52	2.00	2.00	0.00	
900.00	16.00	253.13	889.64	-32.21	-106.20	11.11	2.00	2.00	0.00	
1,000.00	18.00	253.13	985.27	-40.69	-134.18	14.04	2.00	2.00	0.00	
1,100.00	20.00	253.13	1,079.82	-50.14	-165.33	17.29	2.00	2.00	0.00	
1,200.00	22.00	253.13	1,173.17	-60.54	-199.63	20.88	2.00	2.00	0.00	
1,300.00	24.00	253.13	1,265.21	-71.88	-237.02	24.79	2.00	2.00	0.00	
1,400.00	26.00	253.13	1,355.84	-84.14	-277.46	29.02	2.00	2.00	0.00	
1,500.00	28.00	253.13	1,444.94	-97.31	-320.90	33.57	2.00	2.00	0.00	
1,600.00	30.00	253.13	1,532.39	-111.38	-367.29	38.42	2.00	2.00	0.00	
1,700.00	32.00	253.13	1,618.11	-126.33	-416.58	43.58	2.00	2.00	0.00	
1,713.41	32.27	253.13	1,629.47	-128.40	-423.41	44.29	2.00	2.00	0.00	
Start 4439.33 hold at 1713.41 MD										
1,800.00	32.27	253.13	1,702.68	-141.81	-467.64	48.92	0.00	0.00	0.00	
1,900.00	32.27	253.13	1,787.23	-157.31	-518.73	54.26	0.00	0.00	0.00	
2,000.00	32.27	253.13	1,871.79	-172.80	-569.83	59.61	0.00	0.00	0.00	
2,100.00	32.27	253.13	1,956.35	-188.29	-620.92	64.95	0.00	0.00	0.00	
2,200.00	32.27	253.13	2,040.90	-203.79	-672.01	70.30	0.00	0.00	0.00	
2,300.00	32.27	253.13	2,125.46	-219.28	-723.10	75.64	0.00	0.00	0.00	
2,400.00	32.27	253.13	2,210.01	-234.77	-774.19	80.98	0.00	0.00	0.00	
2,500.00	32.27	253.13	2,294.57	-250.27	-825.28	86.33	0.00	0.00	0.00	
2,600.00	32.27	253.13	2,379.12	-265.76	-876.37	91.67	0.00	0.00	0.00	
2,700.00	32.27	253.13	2,463.68	-281.25	-927.46	97.02	0.00	0.00	0.00	
2,800.00	32.27	253.13	2,548.24	-296.75	-978.55	102.36	0.00	0.00	0.00	
2,900.00	32.27	253.13	2,632.79	-312.24	-1,029.64	107.71	0.00	0.00	0.00	
3,000.00	32.27	253.13	2,717.35	-327.73	-1,080.74	113.05	0.00	0.00	0.00	
3,100.00	32.27	253.13	2,801.90	-343.23	-1,131.83	118.39	0.00	0.00	0.00	
3,200.00	32.27	253.13	2,886.46	-358.72	-1,182.92	123.74	0.00	0.00	0.00	
3,300.00	32.27	253.13	2,971.01	-374.21	-1,234.01	129.08	0.00	0.00	0.00	
3,400.00	32.27	253.13	3,055.57	-389.71	-1,285.10	134.43	0.00	0.00	0.00	
3,500.00	32.27	253.13	3,140.13	-405.20	-1,336.19	139.77	0.00	0.00	0.00	
3,600.00	32.27	253.13	3,224.68	-420.69	-1,387.28	145.12	0.00	0.00	0.00	
3,700.00	32.27	253.13	3,309.24	-436.19	-1,438.37	150.46	0.00	0.00	0.00	
3,800.00	32.27	253.13	3,393.79	-451.68	-1,489.46	155.81	0.00	0.00	0.00	
3,900.00	32.27	253.13	3,478.35	-467.17	-1,540.55	161.15	0.00	0.00	0.00	
4,000.00	32.27	253.13	3,562.90	-482.67	-1,591.65	166.49	0.00	0.00	0.00	
4,100.00	32.27	253.13	3,647.46	-498.16	-1,642.74	171.84	0.00	0.00	0.00	
4,200.00	32.27	253.13	3,732.02	-513.65	-1,693.83	177.18	0.00	0.00	0.00	
4,300.00	32.27	253.13	3,816.57	-529.15	-1,744.92	182.53	0.00	0.00	0.00	
4,400.00	32.27	253.13	3,901.13	-544.64	-1,796.01	187.87	0.00	0.00	0.00	
4,500.00	32.27	253.13	3,985.68	-560.13	-1,847.10	193.22	0.00	0.00	0.00	
4,600.00	32.27	253.13	4,070.24	-575.63	-1,898.19	198.56	0.00	0.00	0.00	
4,700.00	32.27	253.13	4,154.79	-591.12	-1,949.28	203.90	0.00	0.00	0.00	
4,800.00	32.27	253.13	4,239.35	-606.61	-2,000.37	209.25	0.00	0.00	0.00	
4,900.00	32.27	253.13	4,323.91	-622.11	-2,051.46	214.59	0.00	0.00	0.00	

Planning Report

Database:	EDM 5000.16 Single User Db	Local Co-ordinate Reference:	Well HORSETAIL 29G-3209
Company:	FUNDARE RESOURCES OPERATING COMPANY, LLC	TVD Reference:	KB 25' @ 4720.00usft
Project:	WELD COUNTY	MD Reference:	KB 25' @ 4720.00usft
Site:	SEC 29-T10N-R57W	North Reference:	True
Well:	HORSETAIL 29G-3209	Survey Calculation Method:	Minimum Curvature
Wellbore:	OWB		
Design:	PROPOSAL 1		

Planned Survey										
Measured Depth (usft)	Inclination (°)	Azimuth (°)	Vertical Depth (usft)	+N/-S (usft)	+E/-W (usft)	Vertical Section (usft)	Dogleg Rate (°/100ft)	Build Rate (°/100ft)	Turn Rate (°/100ft)	
5,000.00	32.27	253.13	4,408.46	-637.60	-2,102.56	219.94	0.00	0.00	0.00	
5,100.00	32.27	253.13	4,493.02	-653.09	-2,153.65	225.28	0.00	0.00	0.00	
5,200.00	32.27	253.13	4,577.57	-668.59	-2,204.74	230.63	0.00	0.00	0.00	
5,300.00	32.27	253.13	4,662.13	-684.08	-2,255.83	235.97	0.00	0.00	0.00	
5,400.00	32.27	253.13	4,746.68	-699.57	-2,306.92	241.32	0.00	0.00	0.00	
5,500.00	32.27	253.13	4,831.24	-715.07	-2,358.01	246.66	0.00	0.00	0.00	
5,600.00	32.27	253.13	4,915.80	-730.56	-2,409.10	252.00	0.00	0.00	0.00	
5,700.00	32.27	253.13	5,000.35	-746.05	-2,460.19	257.35	0.00	0.00	0.00	
5,800.00	32.27	253.13	5,084.91	-761.55	-2,511.28	262.69	0.00	0.00	0.00	
5,900.00	32.27	253.13	5,169.46	-777.04	-2,562.37	268.04	0.00	0.00	0.00	
6,000.00	32.27	253.13	5,254.02	-792.53	-2,613.47	273.38	0.00	0.00	0.00	
6,100.00	32.27	253.13	5,338.57	-808.03	-2,664.56	278.73	0.00	0.00	0.00	
6,152.75	32.27	253.13	5,383.17	-816.20	-2,691.51	281.55	0.00	0.00	0.00	
Start DLS 10.00 TFO 103.79										
6,200.00	31.44	261.95	5,423.33	-821.59	-2,715.79	285.91	10.00	-1.75	18.67	
6,300.00	31.77	281.09	5,508.71	-820.17	-2,767.59	307.13	10.00	0.33	19.13	
6,400.00	34.79	298.53	5,592.50	-801.44	-2,818.62	344.05	10.00	3.01	17.44	
6,500.00	39.88	312.77	5,672.13	-765.96	-2,867.34	395.54	10.00	5.09	14.25	
6,600.00	46.35	323.97	5,745.21	-714.80	-2,912.26	460.04	10.00	6.47	11.19	
6,700.00	53.69	332.85	5,809.49	-649.53	-2,952.03	535.58	10.00	7.34	8.88	
6,800.00	61.57	340.15	5,863.04	-572.13	-2,985.43	619.88	10.00	7.88	7.30	
6,900.00	69.79	346.41	5,904.23	-484.94	-3,011.45	710.37	10.00	8.22	6.26	
7,000.00	78.20	352.04	5,931.79	-390.62	-3,029.29	804.30	10.00	8.42	5.62	
7,100.00	86.72	357.33	5,944.90	-292.03	-3,038.43	898.81	10.00	8.52	5.29	
7,138.32	90.00	359.31	5,946.00	-253.75	-3,039.55	934.59	10.00	8.55	5.19	
Start 7574.82 hold at 7138.32 MD										
7,200.00	90.00	359.31	5,946.00	-192.08	-3,040.29	991.80	0.00	0.00	0.00	
7,300.00	90.00	359.31	5,946.00	-92.08	-3,041.48	1,084.56	0.00	0.00	0.00	
7,400.00	90.00	359.31	5,946.00	7.91	-3,042.68	1,177.33	0.00	0.00	0.00	
7,500.00	90.00	359.31	5,946.00	107.90	-3,043.88	1,270.09	0.00	0.00	0.00	
7,600.00	90.00	359.31	5,946.00	207.90	-3,045.07	1,362.86	0.00	0.00	0.00	
7,700.00	90.00	359.31	5,946.00	307.89	-3,046.27	1,455.62	0.00	0.00	0.00	
7,800.00	90.00	359.31	5,946.00	407.88	-3,047.47	1,548.39	0.00	0.00	0.00	
7,900.00	90.00	359.31	5,946.00	507.87	-3,048.66	1,641.15	0.00	0.00	0.00	
8,000.00	90.00	359.31	5,946.00	607.87	-3,049.86	1,733.92	0.00	0.00	0.00	
8,100.00	90.00	359.31	5,946.00	707.86	-3,051.06	1,826.68	0.00	0.00	0.00	
8,200.00	90.00	359.31	5,946.00	807.85	-3,052.26	1,919.45	0.00	0.00	0.00	
8,300.00	90.00	359.31	5,946.00	907.85	-3,053.45	2,012.21	0.00	0.00	0.00	
8,400.00	90.00	359.31	5,946.00	1,007.84	-3,054.65	2,104.97	0.00	0.00	0.00	
8,500.00	90.00	359.31	5,946.00	1,107.83	-3,055.85	2,197.74	0.00	0.00	0.00	
8,600.00	90.00	359.31	5,946.00	1,207.82	-3,057.04	2,290.50	0.00	0.00	0.00	
8,700.00	90.00	359.31	5,946.00	1,307.82	-3,058.24	2,383.27	0.00	0.00	0.00	
8,800.00	90.00	359.31	5,946.00	1,407.81	-3,059.44	2,476.03	0.00	0.00	0.00	
8,900.00	90.00	359.31	5,946.00	1,507.80	-3,060.63	2,568.80	0.00	0.00	0.00	
9,000.00	90.00	359.31	5,946.00	1,607.80	-3,061.83	2,661.56	0.00	0.00	0.00	
9,100.00	90.00	359.31	5,946.00	1,707.79	-3,063.03	2,754.33	0.00	0.00	0.00	
9,200.00	90.00	359.31	5,946.00	1,807.78	-3,064.22	2,847.09	0.00	0.00	0.00	
9,300.00	90.00	359.31	5,946.00	1,907.77	-3,065.42	2,939.86	0.00	0.00	0.00	
9,400.00	90.00	359.31	5,946.00	2,007.77	-3,066.62	3,032.62	0.00	0.00	0.00	
9,500.00	90.00	359.31	5,946.00	2,107.76	-3,067.82	3,125.38	0.00	0.00	0.00	
9,600.00	90.00	359.31	5,946.00	2,207.75	-3,069.01	3,218.15	0.00	0.00	0.00	
9,700.00	90.00	359.31	5,946.00	2,307.75	-3,070.21	3,310.91	0.00	0.00	0.00	
9,800.00	90.00	359.31	5,946.00	2,407.74	-3,071.41	3,403.68	0.00	0.00	0.00	

Planning Report

Database:	EDM 5000.16 Single User Db	Local Co-ordinate Reference:	Well HORSETAIL 29G-3209
Company:	FUNDARE RESOURCES OPERATING COMPANY, LLC	TVD Reference:	KB 25' @ 4720.00usft
Project:	WELD COUNTY	MD Reference:	KB 25' @ 4720.00usft
Site:	SEC 29-T10N-R57W	North Reference:	True
Well:	HORSETAIL 29G-3209	Survey Calculation Method:	Minimum Curvature
Wellbore:	OWB		
Design:	PROPOSAL 1		

Planned Survey										
Measured Depth (usft)	Inclination (°)	Azimuth (°)	Vertical Depth (usft)	+N/-S (usft)	+E/-W (usft)	Vertical Section (usft)	Dogleg Rate (°/100ft)	Build Rate (°/100ft)	Turn Rate (°/100ft)	
9,900.00	90.00	359.31	5,946.00	2,507.73	-3,072.60	3,496.44	0.00	0.00	0.00	
10,000.00	90.00	359.31	5,946.00	2,607.72	-3,073.80	3,589.21	0.00	0.00	0.00	
10,100.00	90.00	359.31	5,946.00	2,707.72	-3,075.00	3,681.97	0.00	0.00	0.00	
10,200.00	90.00	359.31	5,946.00	2,807.71	-3,076.19	3,774.74	0.00	0.00	0.00	
10,300.00	90.00	359.31	5,946.00	2,907.70	-3,077.39	3,867.50	0.00	0.00	0.00	
10,400.00	90.00	359.31	5,946.00	3,007.70	-3,078.59	3,960.27	0.00	0.00	0.00	
10,500.00	90.00	359.31	5,946.00	3,107.69	-3,079.78	4,053.03	0.00	0.00	0.00	
10,600.00	90.00	359.31	5,946.00	3,207.68	-3,080.98	4,145.79	0.00	0.00	0.00	
10,700.00	90.00	359.31	5,946.00	3,307.67	-3,082.18	4,238.56	0.00	0.00	0.00	
10,800.00	90.00	359.31	5,946.00	3,407.67	-3,083.37	4,331.32	0.00	0.00	0.00	
10,900.00	90.00	359.31	5,946.00	3,507.66	-3,084.57	4,424.09	0.00	0.00	0.00	
11,000.00	90.00	359.31	5,946.00	3,607.65	-3,085.77	4,516.85	0.00	0.00	0.00	
11,100.00	90.00	359.31	5,946.00	3,707.65	-3,086.97	4,609.62	0.00	0.00	0.00	
11,200.00	90.00	359.31	5,946.00	3,807.64	-3,088.16	4,702.38	0.00	0.00	0.00	
11,300.00	90.00	359.31	5,946.00	3,907.63	-3,089.36	4,795.15	0.00	0.00	0.00	
11,400.00	90.00	359.31	5,946.00	4,007.62	-3,090.56	4,887.91	0.00	0.00	0.00	
11,500.00	90.00	359.31	5,946.00	4,107.62	-3,091.75	4,980.68	0.00	0.00	0.00	
11,600.00	90.00	359.31	5,946.00	4,207.61	-3,092.95	5,073.44	0.00	0.00	0.00	
11,700.00	90.00	359.31	5,946.00	4,307.60	-3,094.15	5,166.20	0.00	0.00	0.00	
11,800.00	90.00	359.31	5,946.00	4,407.60	-3,095.34	5,258.97	0.00	0.00	0.00	
11,900.00	90.00	359.31	5,946.00	4,507.59	-3,096.54	5,351.73	0.00	0.00	0.00	
12,000.00	90.00	359.31	5,946.00	4,607.58	-3,097.74	5,444.50	0.00	0.00	0.00	
12,100.00	90.00	359.31	5,946.00	4,707.57	-3,098.93	5,537.26	0.00	0.00	0.00	
12,200.00	90.00	359.31	5,946.00	4,807.57	-3,100.13	5,630.03	0.00	0.00	0.00	
12,300.00	90.00	359.31	5,946.00	4,907.56	-3,101.33	5,722.79	0.00	0.00	0.00	
12,400.00	90.00	359.31	5,946.00	5,007.55	-3,102.53	5,815.56	0.00	0.00	0.00	
12,500.00	90.00	359.31	5,946.00	5,107.55	-3,103.72	5,908.32	0.00	0.00	0.00	
12,600.00	90.00	359.31	5,946.00	5,207.54	-3,104.92	6,001.09	0.00	0.00	0.00	
12,700.00	90.00	359.31	5,946.00	5,307.53	-3,106.12	6,093.85	0.00	0.00	0.00	
12,800.00	90.00	359.31	5,946.00	5,407.52	-3,107.31	6,186.61	0.00	0.00	0.00	
12,900.00	90.00	359.31	5,946.00	5,507.52	-3,108.51	6,279.38	0.00	0.00	0.00	
13,000.00	90.00	359.31	5,946.00	5,607.51	-3,109.71	6,372.14	0.00	0.00	0.00	
13,100.00	90.00	359.31	5,946.00	5,707.50	-3,110.90	6,464.91	0.00	0.00	0.00	
13,200.00	90.00	359.31	5,946.00	5,807.49	-3,112.10	6,557.67	0.00	0.00	0.00	
13,300.00	90.00	359.31	5,946.00	5,907.49	-3,113.30	6,650.44	0.00	0.00	0.00	
13,400.00	90.00	359.31	5,946.00	6,007.48	-3,114.49	6,743.20	0.00	0.00	0.00	
13,500.00	90.00	359.31	5,946.00	6,107.47	-3,115.69	6,835.97	0.00	0.00	0.00	
13,600.00	90.00	359.31	5,946.00	6,207.47	-3,116.89	6,928.73	0.00	0.00	0.00	
13,700.00	90.00	359.31	5,946.00	6,307.46	-3,118.09	7,021.50	0.00	0.00	0.00	
13,800.00	90.00	359.31	5,946.00	6,407.45	-3,119.28	7,114.26	0.00	0.00	0.00	
13,900.00	90.00	359.31	5,946.00	6,507.44	-3,120.48	7,207.02	0.00	0.00	0.00	
14,000.00	90.00	359.31	5,946.00	6,607.44	-3,121.68	7,299.79	0.00	0.00	0.00	
14,100.00	90.00	359.31	5,946.00	6,707.43	-3,122.87	7,392.55	0.00	0.00	0.00	
14,200.00	90.00	359.31	5,946.00	6,807.42	-3,124.07	7,485.32	0.00	0.00	0.00	
14,300.00	90.00	359.31	5,946.00	6,907.42	-3,125.27	7,578.08	0.00	0.00	0.00	
14,400.00	90.00	359.31	5,946.00	7,007.41	-3,126.46	7,670.85	0.00	0.00	0.00	
14,500.00	90.00	359.31	5,946.00	7,107.40	-3,127.66	7,763.61	0.00	0.00	0.00	
14,600.00	90.00	359.31	5,946.00	7,207.39	-3,128.86	7,856.38	0.00	0.00	0.00	
14,700.00	90.00	359.31	5,946.00	7,307.39	-3,130.05	7,949.14	0.00	0.00	0.00	
14,713.15	90.00	359.31	5,946.00	7,320.53	-3,130.21	7,961.34	0.00	0.00	0.00	
Start DLS 2.00 TFO -90.00										
14,714.23	90.00	359.29	5,946.00	7,321.62	-3,130.22	7,962.34	2.00	0.00	-2.00	
Start 198.59 hold at 14714.23 MD										

Planning Report

Database:	EDM 5000.16 Single User Db	Local Co-ordinate Reference:	Well HORSETAIL 29G-3209
Company:	FUNDARE RESOURCES OPERATING COMPANY, LLC	TVD Reference:	KB 25' @ 4720.00usft
Project:	WELD COUNTY	MD Reference:	KB 25' @ 4720.00usft
Site:	SEC 29-T10N-R57W	North Reference:	True
Well:	HORSETAIL 29G-3209	Survey Calculation Method:	Minimum Curvature
Wellbore:	OWB		
Design:	PROPOSAL 1		

Planned Survey										
Measured Depth (usft)	Inclination (°)	Azimuth (°)	Vertical Depth (usft)	+N/-S (usft)	+E/-W (usft)	Vertical Section (usft)	Dogleg Rate (°/100ft)	Build Rate (°/100ft)	Turn Rate (°/100ft)	
14,800.00	90.00	359.29	5,946.00	7,407.38	-3,131.28	8,041.92	0.00	0.00	0.00	
14,900.00	90.00	359.29	5,946.00	7,507.37	-3,132.52	8,134.70	0.00	0.00	0.00	
14,912.82	90.00	359.29	5,946.00	7,520.19	-3,132.68	8,146.59	0.00	0.00	0.00	
TD at 14912.82										

Design Targets										
Target Name - hit/miss target - Shape	Dip Angle (°)	Dip Dir. (°)	TVD (usft)	+N/-S (usft)	+E/-W (usft)	Northing (usft)	Easting (usft)	Latitude	Longitude	
BPZ - HORSETAIL 29G- - plan hits target center - Point	0.00	0.00	5,946.00	7,320.53	-3,130.21	1,550,098.50	3,474,767.90	40.830792°N	103.784322°W	
LP - HORSETAIL 29G-3 - plan hits target center - Point	0.00	0.00	5,946.00	-253.75	-3,039.55	1,542,527.42	3,475,006.05	40.810003°N	103.783991°W	
PBHL - HORSETAIL 29C - plan hits target center - Point	0.00	0.00	5,946.00	7,520.19	-3,132.68	1,550,298.08	3,474,761.55	40.831340°N	103.784331°W	

Plan Annotations					
Measured Depth (usft)	Vertical Depth (usft)	Local Coordinates		Comment	
		+N/-S (usft)	+E/-W (usft)		
100.00	100.00	0.00	0.00	Start Build 2.00	
1,713.41	1,629.47	-128.40	-423.41	Start 4439.33 hold at 1713.41 MD	
6,152.75	5,383.17	-816.20	-2,691.51	Start DLS 10.00 TFO 103.79	
7,138.32	5,946.00	-253.75	-3,039.55	Start 7574.82 hold at 7138.32 MD	
14,713.15	5,946.00	7,320.53	-3,130.21	Start DLS 2.00 TFO -90.00	
14,714.23	5,946.00	7,321.62	-3,130.22	Start 198.59 hold at 14714.23 MD	
14,912.82	5,946.00	7,520.19	-3,132.68	TD at 14912.82	