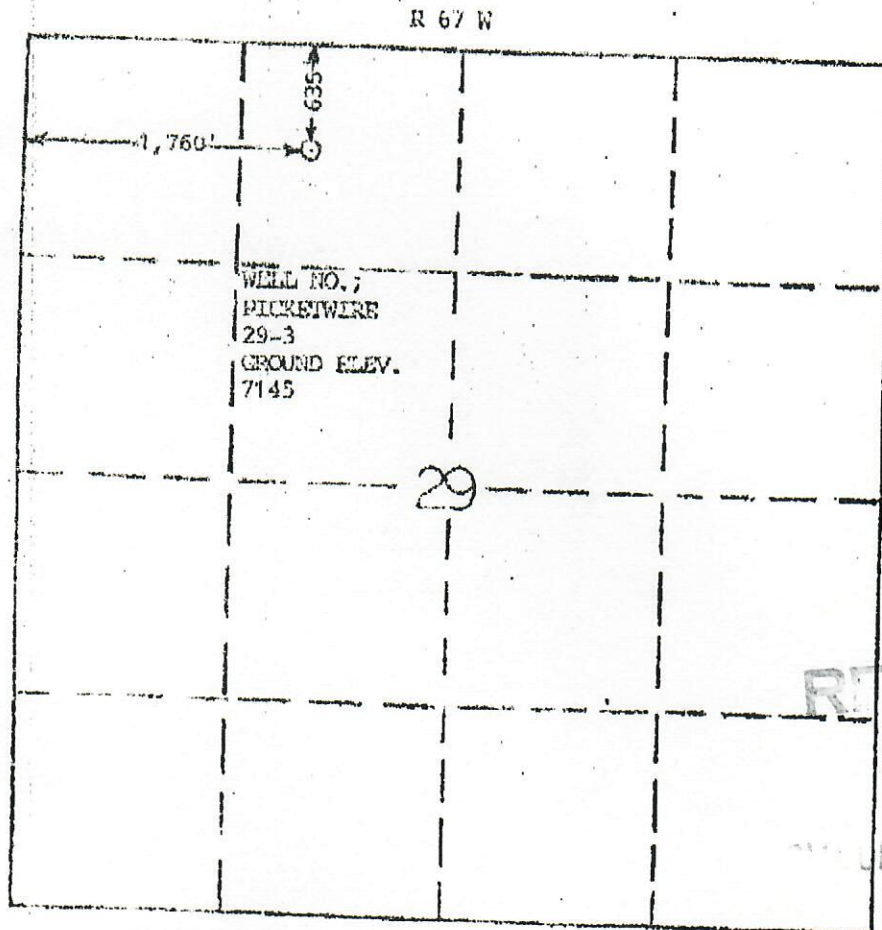




00591597

OCT 03 '90 13:52 (719) 846-4866

P.9



SCALE = 1" = 1,000'

T 33 S

RECEIVED

OCT 10 1990

OIL & GAS CONS. COMM

WELL LOCATION FOR:

WESTERN OIL CORPORATION

WELL NO.:

PICKETWIRE 29-3

LOCATED 635 FEET FROM THE NORTH LINE  
AND 1,760 FEET FROM THE WEST LINE OF  
SECTION 29, TOWNSHIP 33 SOUTH, RANGE  
67 WEST OF THE 6TH P. M., COUNTY OF  
LAS ANIMAS, STATE OF COLORADO.

I HEREBY CERTIFY THAT THIS PLAT IS AN  
ACCURATE REPRESENTATION OF A CORRECT  
SURVEY OF WELL NO. PICKETWIRE 29-3,  
T33S, R 67 W.

SURVEYED OCT. 4, 1990



GARY L. PERRY  
R.L.S. NO. 12160

PERRY SURVEYING, INC.