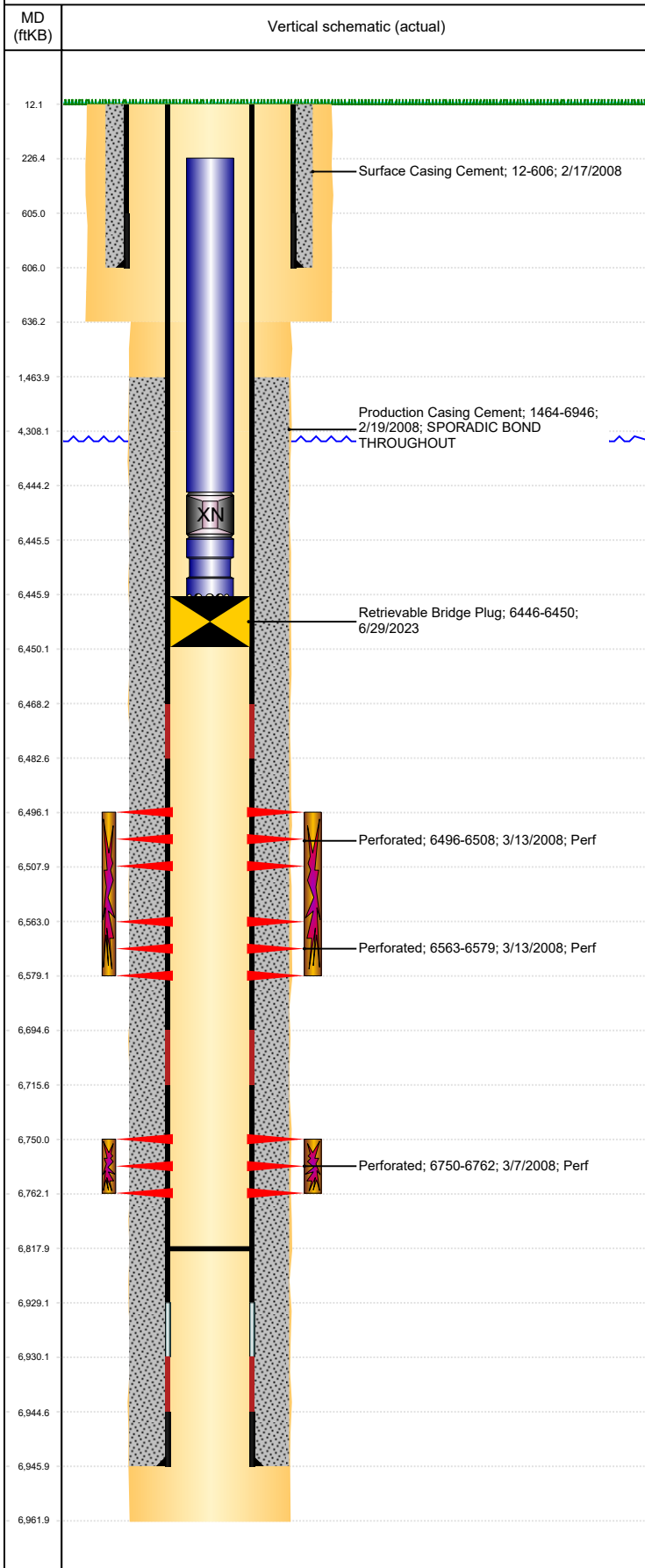




P&A Wellbore For State

Well Name: SATER C23-22

Land, Original Hole, 9/5/2023 9:18:21 AM



Well Header

Surface UWI 0512325441		Business Unit Rockies		Gov Auth Dist		Prod Tree Loc Land	
Orig. KB to Gnd (ft) 12.00	Original Spud Date 2/16/2008	Abandon Date		Well Sub-Status TA			High... N
Comment							

Surface Location (Congressional)

Qtr 3 SW	Qtr 4 NE	Section 23	Twnshp 4	Twnsh... N	Range 64	Rng E/... W	Latitude (°) 40.29813044 5	Longitude (°) -104.51355839
-------------	-------------	---------------	-------------	---------------	-------------	----------------	----------------------------------	--------------------------------

Wellbore Sections

Section Des	Hole Size (in)	Act Top (ftKB)	Act Btm (ftKB)
SURFACE	12 1/4	12.0	636.0
PRODUCTION	7 7/8	636.0	4,308.0
PRODUCTION	7 7/8	4,308.0	6,962.0

Casing Strings

Csg Des	Run Date	OD (in)	Wt/Len (lb/ft)	Grade	Top Depth (MD) (ftKB)	Set Depth (MD) (ftKB)
Surface	2/17/2008	8 5/8	24.00	J-55	12	606
Production Casing	2/19/2008	4 1/2	11.60	M-80	12.1	6946

Cement

Des	Start Date	Top (ftKB)	Btm (ftKB)
Surface Casing Cement	2/17/2008	12.0	606.0
Production Casing Cement	2/19/2008	1,464.0	6,946.0

Zone Statuses

Zone Name	Status Date	Status	Fluid Type	Job	Prod Method
CODELL	3/15/2008	PR		DRILLING/COMPLETION - ORIGINAL, 2/16/2008...	
CODELL	6/29/2023	Closed		Well Preparation, 6/28/2023 00:00	
NIOBRARA	3/15/2008	PR		DRILLING/COMPLETION - ORIGINAL, 2/16/2008...	
NIOBRARA	6/29/2023	Closed		Well Preparation, 6/28/2023 00:00	

Perforation Data

Linked Zone	Explosive Type	Entered Shot Total	Top (ftKB)	Btm (ftKB)	Date
NIOBRARA, Original Hole	A	48	6,496.0	6,508.0	3/13/2008
NIOBRARA, Original Hole	B	48	6,563.0	6,579.0	3/13/2008
CODELL, Original Hole		48	6,750.0	6,762.0	3/7/2008

Stimulation Intervals

Zone	Start Date	Top (ftKB)	Btm (ftKB)
NIOBRARA, Original Hole	3/13/2008	6,496.0	6,579.0
CODELL, Original Hole	3/13/2008	6,750.0	6,762.0

Other In Hole

Run Date	Des	Make	OD (in)	Top (ftKB)	Btm (ftKB)
6/29/2023	Retrievable Bridge Plug		3.99	6,446.0	6,450.0

Logs

Date	Type	Depth Top (MD) (ftKB)	Btm (ftKB)
2/19/2008	Caliper/Comp.Density/Neutron/GR/SP/ML	2,610	6,945.0
2/19/2008	DIL/GR/SP/Caliper	606	6,965.0
3/5/2008	CBL/CCL/GR	1,390	6,883.0

Plug Back Total Depths

Date	Type	Com	PBTD (ftKB)
2/19/2008	FLOAT COLLAR		6,930
12/2/2008	PLUG REMNANTS		6,818