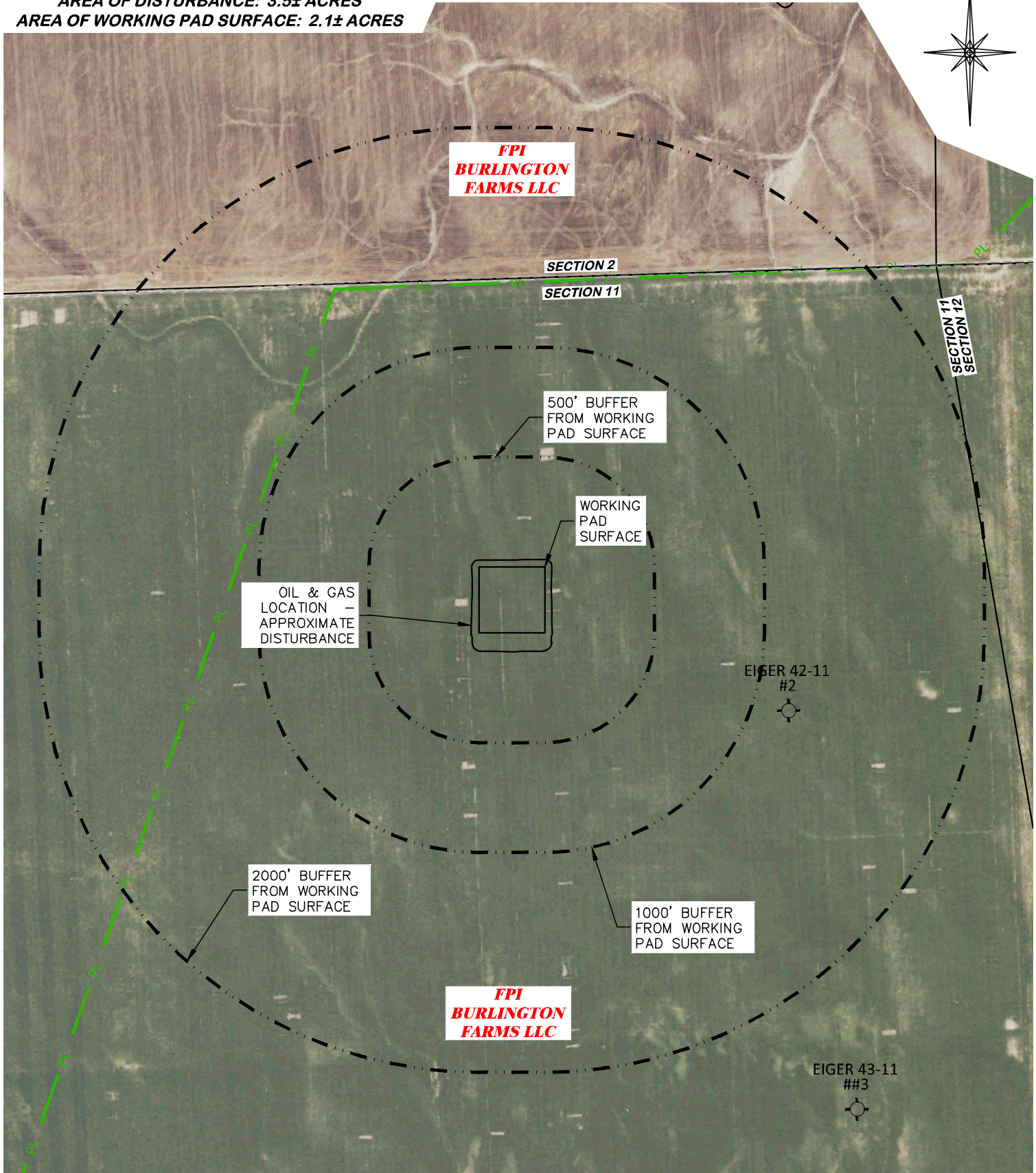
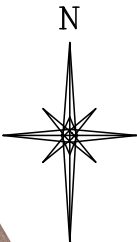
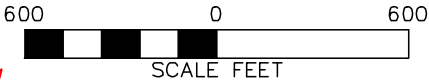


UNGRADED ELEVATION: 4164.5'
FINAL ELEVATION: 4164.0'
AREA OF DISTURBANCE: 3.5± ACRES
AREA OF WORKING PAD SURFACE: 2.1± ACRES




CULTURAL ITEMS:	
MEASURED FROM NEAREST EDGE OF THE PROPOSED WORKING PAD SURFACE	
BUILDING	5280' +
RESIDENTIAL BUILDING	5280' +
HIGH OCCUPANCY BUILDING	5280' +
DOAA	5280' +
PUBLIC ROAD	3039' W
ABOVE GROUND UTILITY	4004' SW
RAILROAD	5280' +
PROPERTY LINE	3121' SW
SCHOOL FACILITY	5280' +
SCHOOL PROPERTY LINE	5280' +
CHILDCARE FACILITY	5280' +
SCHOOL PROPERTY LINE	5280' +
DI COMMUNITY	5280' +

CULTURAL FEATURE INFORMATION			
PRODUCTION FEATURE	0-500 FEET	501 - 1,000 FEET	1,001 - 2,000 FEET
	NUMBER	NUMBER	NUMBER
BUILDING	0	0	0
RESIDENTIAL BUILDING	0	0	0
HIGH OCCUPANCY BUILDING	0	0	0
SCHOOL PROPERTIES	0	0	0
SCHOOL FACILITIES	0	0	0
DOAA	0	0	0



#1 WAVETECH FPI BURLINGTON FARMS 32-11



DRG RIFFIN & ASSOCIATES, INC.
(307) 362-5028 1414 ELK ST., ROCK SPRINGS, WY 82901

DRAWN: 8/24/2022 - JMB/DWB	SCALE: 1" = 600'
REVISED: 10/11/22 - JMB	DRG JOB No. 22272
CORRECTED QTR-QTR	304b(3)C CULTURAL

CULTURAL DISTANCES DRAWING

CULTURAL DISTANCES
WAVETECH HELIUM, INC.
#1 WAVETECH FPI BURLINGTON FARMS 32-11
SWNE, SECTION 11, T. 12 S., R. 43 W., 6th P.M.,
CHEYENNE COUNTY, COLORADO