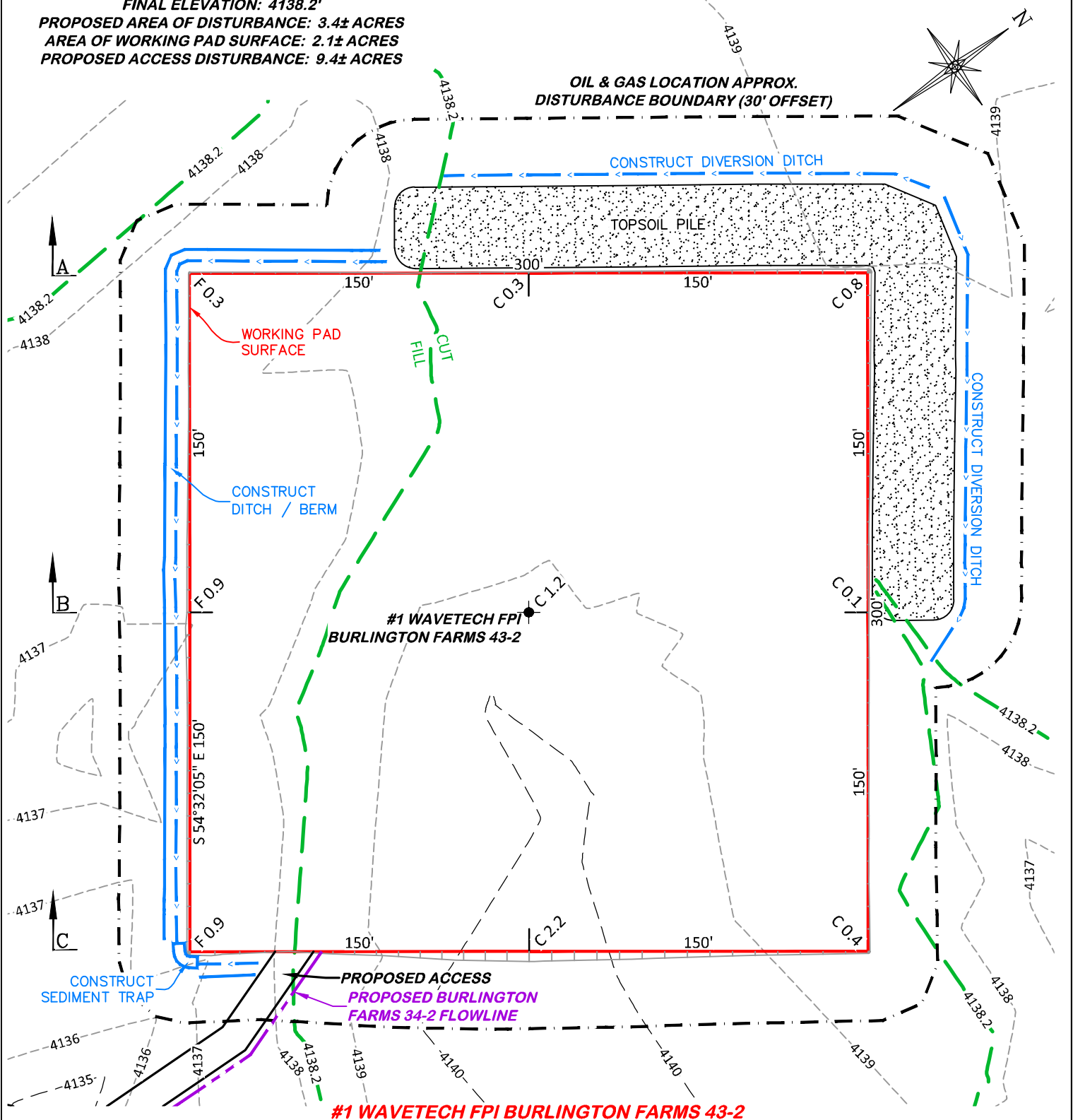


UNGRADED ELEVATION: 4139.4'  
 FINAL ELEVATION: 4138.2'  
 PROPOSED AREA OF DISTURBANCE: 3.4± ACRES  
 AREA OF WORKING PAD SURFACE: 2.1± ACRES  
 PROPOSED ACCESS DISTURBANCE: 9.4± ACRES



**#1 WAVETECH FPI BURLINGTON FARMS 43-2**

NOTE: THE EARTH QUANTITIES ON THIS DRAWING ARE ESTIMATED AND THE USE OF SAID QUANTITIES IS AT THE RESPONSIBILITY OF THE USER.

60 0 60  
 SCALE FEET

**CONSTRUCTION LAYOUT DRAWING 1 OF 5**

**PLAN**  
**WAVETECH HELIUM, INC.**  
**#1 WAVETECH FPI BURLINGTON FARMS 43-2**  
**NESE, SECTION 2, T. 12 S., R. 43 W., 6th P.M.,**  
**CHEYENNE COUNTY, COLORADO**

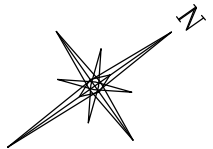
**ESTIMATED EARTHWORK**

**DRG RIFFIN & ASSOCIATES, INC.**  
 (307) 362-5028 1414 ELK ST., ROCK SPRINGS, WY 82901

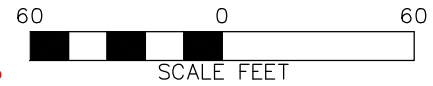
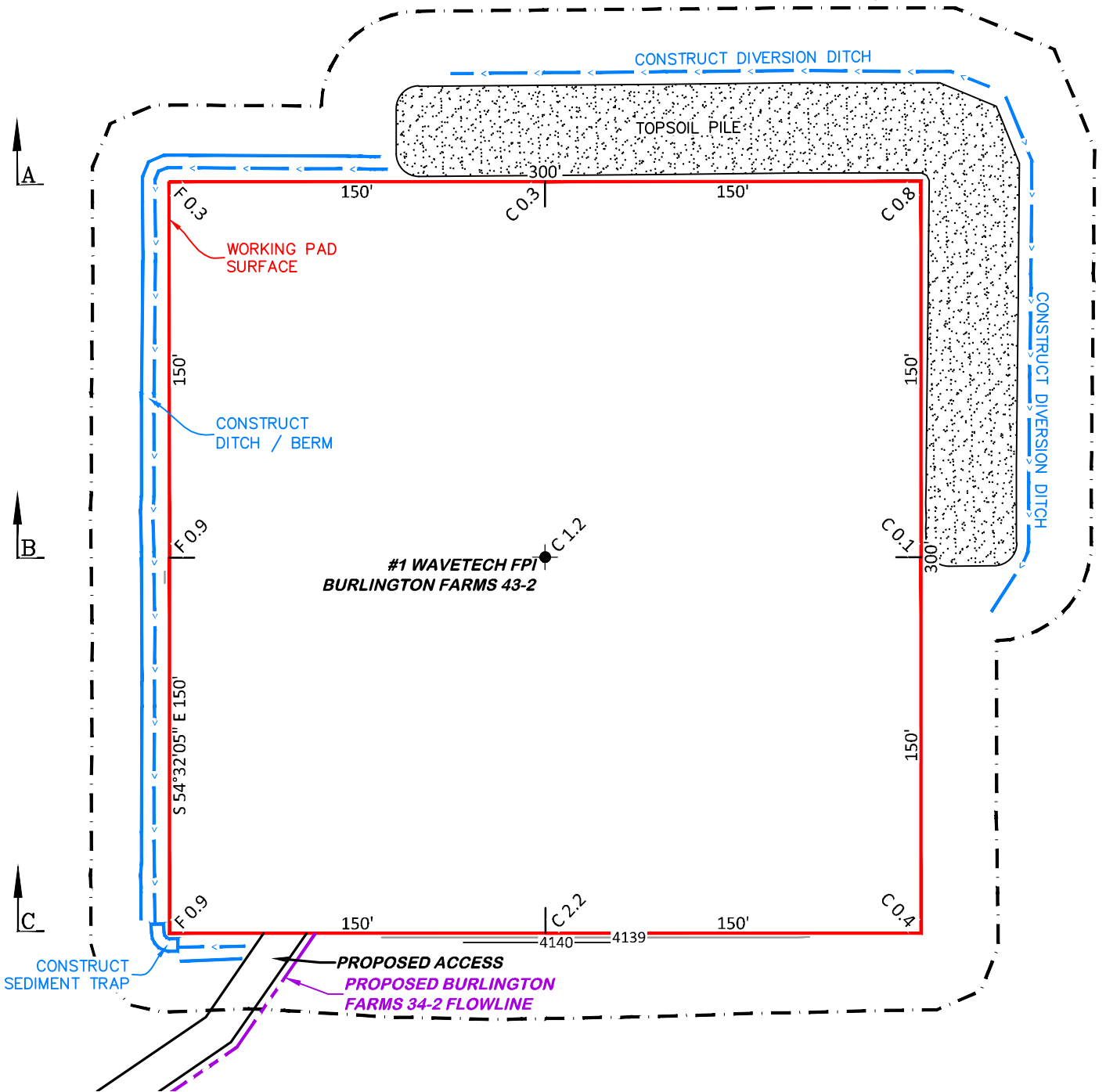
**DRAWN: 8/4/22 - JMB/DEH**      **SCALE: 1" = 60'**  
**REVISED: 1/20/23 - JMB**      **DRG JOB No. 22270**  
**PAD MOVE**      **304b(7)Bi CONST**

ITEM	CUT	FILL	TOPSOIL	EXCESS
PAD	1,911 CY	204 CY	1,691 CY	16 CY
PIT	NONE			NONE
<b>TOTALS</b>	<b>1,911 CY</b>	<b>204 CY</b>	<b>1,691 CY</b>	<b>16 CY</b>

UNGRADED ELEVATION: 4139.4'  
 FINAL ELEVATION: 4138.2'  
 PROPOSED AREA OF DISTURBANCE: 3.4± ACRES  
 AREA OF WORKING PAD SURFACE: 2.1± ACRES  
 PROPOSED ACCESS DISTURBANCE: 9.4± ACRES



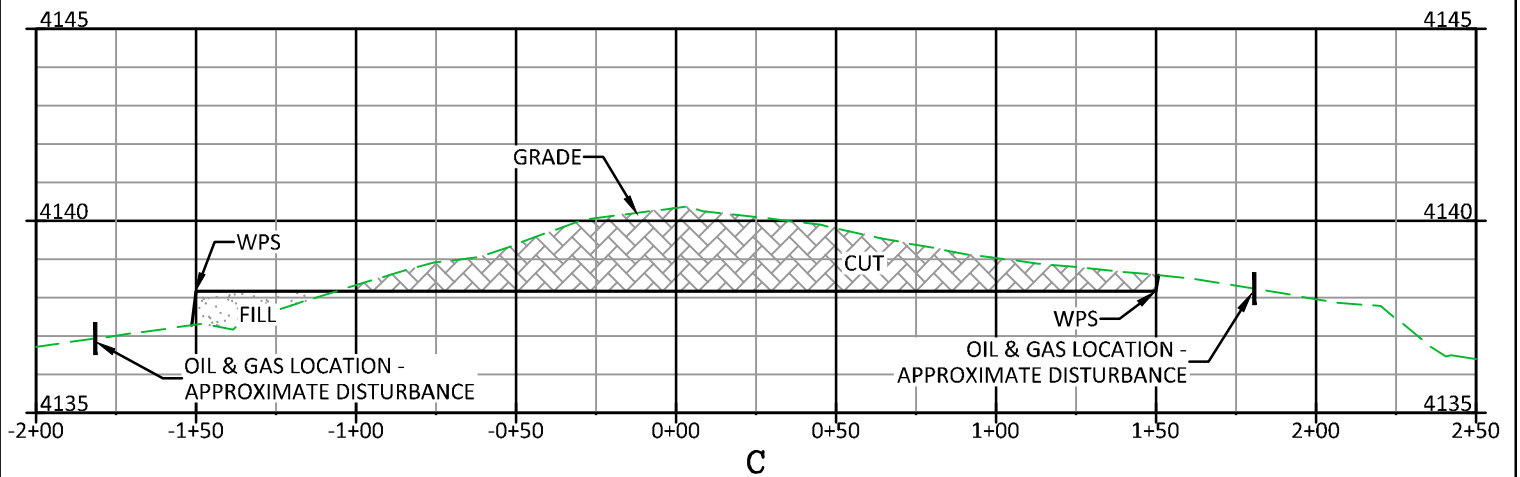
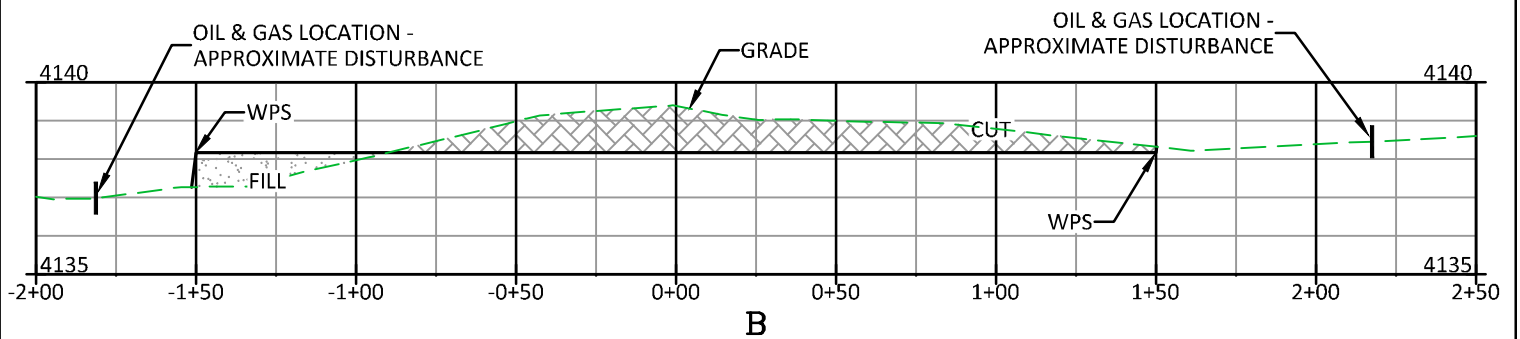
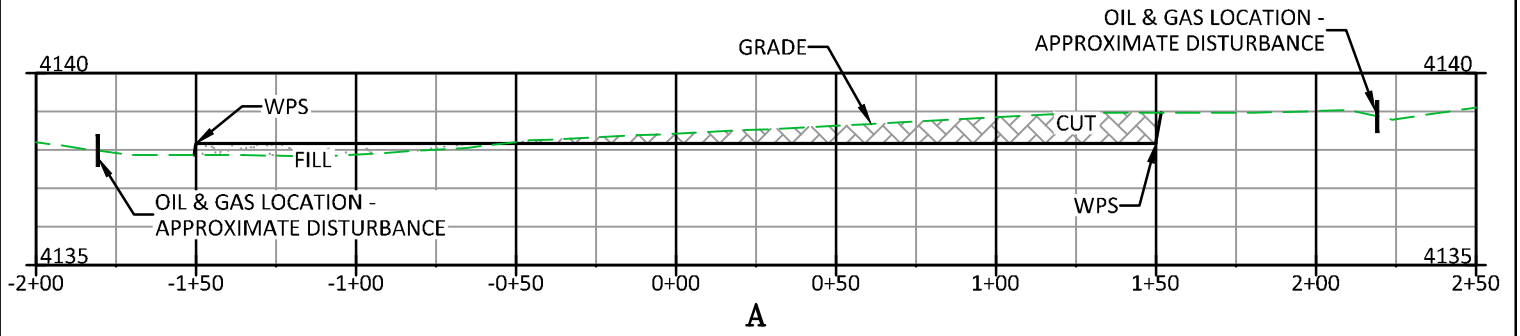
OIL & GAS LOCATION APPROX.  
DISTURBANCE BOUNDARY (30' OFFSET)



**#1 WAVETECH FPI BURLINGTON FARMS 43-2**

(307) 362-5028 1414 ELK ST., ROCK SPRINGS, WY 82901	
DRAWN: 8/4/22 - JMB/DEH	SCALE: 1" = 60'
REVISED: 1/20/23 - JMB	DRG JOB No. 22270
PAD MOVE	304b(7)Bi DSGN CONT

**CONSTRUCTION LAYOUT DRAWING 3 OF 5**  
**CONSTRUCTION LAYOUT DRAWING**  
**PLANNED CUT-FILL CONTOURS**  
**WAVETECH HELIUM, INC.**  
**#1 WAVETECH FPI BURLINGTON FARMS 43-2**  
**NESE, SECTION 2, T. 12 S., R. 43 W., 6th P.M.,**  
**CHEYENNE COUNTY, COLORADO**



**CUT SLOPES - 2:1**

**FILL SLOPES - 1.5:1**

**#1 WAVETECH FPI BURLINGTON FARMS 43-2**

**DRG** **RIFFIN & ASSOCIATES, INC.**  
 (307) 362-5028 1414 ELK ST., ROCK SPRINGS, WY 82901

DRAWN: 8/4/22 - JMB/DEH	SCALE: H - 1" = 60' V - 1" = 5'
REVISED: 1/20/23 - JMB	DRG JOB No. 22270
PAD MOVE	304b(7)Bi XSEC

**CONSTRUCTION LAYOUT DRAWING 2 OF 5**  
**CONSTRUCTION LAYOUT DRAWING**  
**CROSS-SECTIONS**  
**WAVETECH HELIUM, INC.**  
**#1 WAVETECH FPI BURLINGTON FARMS 43-2**  
**NESE, SECTION 2, T. 12 S., R. 43 W., 6th P.M.,**  
**CHEYENNE COUNTY, COLORADO**

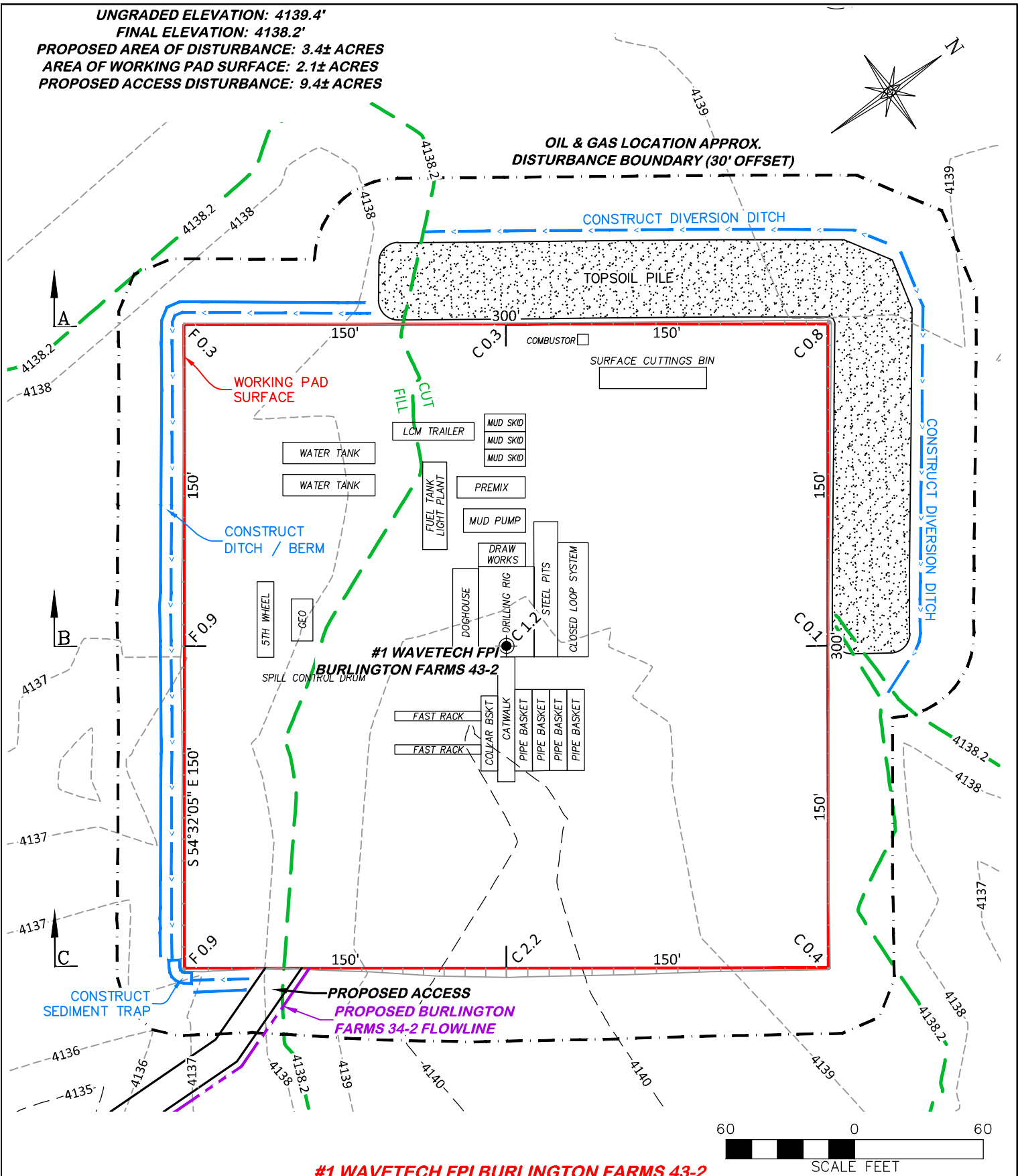
UNGRADED ELEVATION: 4139.4'

FINAL ELEVATION: 4138.2'

PROPOSED AREA OF DISTURBANCE: 3.4± ACRES

AREA OF WORKING PAD SURFACE: 2.1± ACRES

PROPOSED ACCESS DISTURBANCE: 9.4± ACRES



**#1 WAVETECH FPI BURLINGTON FARMS 43-2**

**CONSTRUCTION LAYOUT DRAWING 4 OF 5**

**DRG RIFFIN & ASSOCIATES, INC.**  
 (307) 362-5028 1414 ELK ST., ROCK SPRINGS, WY 82901

**PRELIMINARY RIG LAYOUT DRAWING**  
**WAVETECH HELIUM, INC.**  
**#1 WAVETECH FPI BURLINGTON FARMS 43-2**  
**NESE, SECTION 2, T. 12 S., R. 43 W., 6th P.M.,**  
**CHEYENNE COUNTY, COLORADO**

DRAWN: 8/4/22 - JMB/DEH

SCALE: 1" = 60'

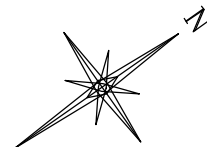
REVISED: 1/20/23 - JMB

DRG JOB No. 22270

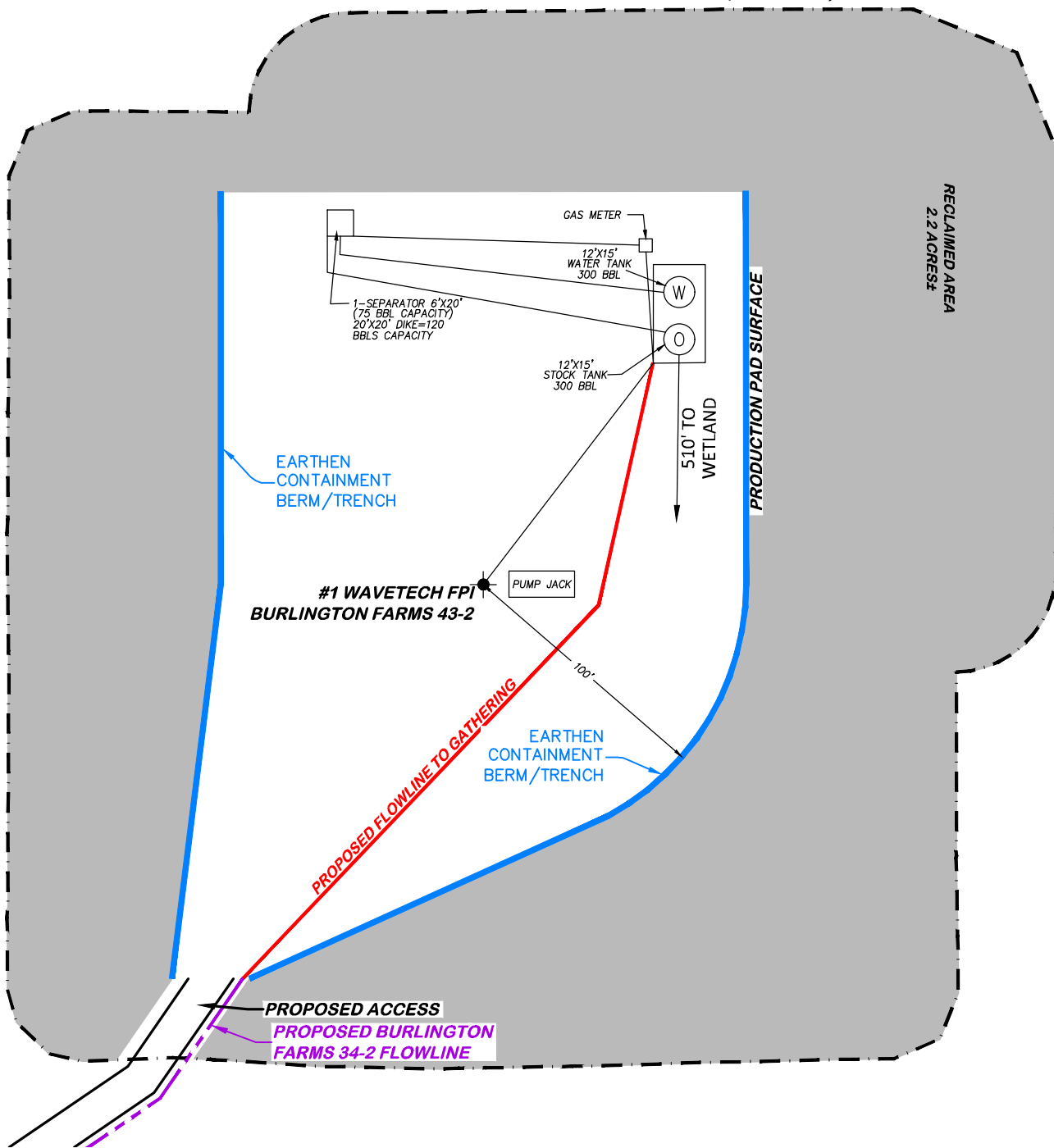
PAD MOVE

304b(7)Bii RIG

APPROXIMATE DISTURBANCE AREA 3.4± ACRES  
 PROPOSED RECLAMATION AREA: 2.2± ACRES  
 INTERIM RECLAMATION DISTURBANCE: 1.2± ACRES



OIL & GAS LOCATION APPROX.  
 DISTURBANCE BOUNDARY (30' OFFSET)



#1 WAVETECH FPI BURLINGTON FARMS 43-2

**DRG** RIFFIN & ASSOCIATES, INC.  
 (307) 362-5028 1414 ELK ST., ROCK SPRINGS, WY 82901

DRAWN: 8/4/22 - JMB/DEH	SCALE: 1" = 60'
REVISED: 1/20/23 - JMB	DRG JOB No. 22270
PAD MOVE	304b(7)Bv FACILITY

CONSTRUCTION LAYOUT DRAWING 5 OF 5

FACILITY LAYOUT DRAWING  
 WAVETECH HELIUM, INC.  
 #1 WAVETECH FPI BURLINGTON FARMS 43-2  
 NESE, SECTION 2, T. 12 S., R. 43 W., 6th P.M.,  
 CHEYENNE COUNTY, COLORADO