

UNGRADED ELEVATION: 4139.4'  
 FINAL ELEVATION: 4138.2'  
 AREA OF DISTURBANCE: 3.4± ACRES  
 AREA OF WORKING PAD SURFACE: 2.1± ACRES

#1 WAVETECH FPI BURLINGTON FARMS 43-2

N

SCALE FEET  
 BEFORE DIGGING  
 CALL FOR  
 UTILITY LINE LOCATION

**PAD LOCATION:**  
 LAT: N 39.035815  
 LONG: W 102.188468



WORKING PAD SURFACE

PROPERTY LINE

2000' WORKING PAD SURFACE BUFFER

PROPOSED LOCATION DISTURBANCE

EXISTING 2-TRACK ROAD

EXISTING UNDERGROUND PIPELINE

PLUGGED OIL & GAS (P&A) WELL

LOCATION DRAWING

WAVETECH HELIUM, INC.  
 #1 WAVETECH FPI BURLINGTON FARMS 43-2  
 NESE, SECTION 2, T. 12 S., R. 43 W., 6th P.M.,  
 CHEYENNE COUNTY, COLORADO

**DRG** RIFFIN & ASSOCIATES, INC.  
 1414 ELK ST., ROCK SPRINGS, WY 82901  
 (307) 962-5028

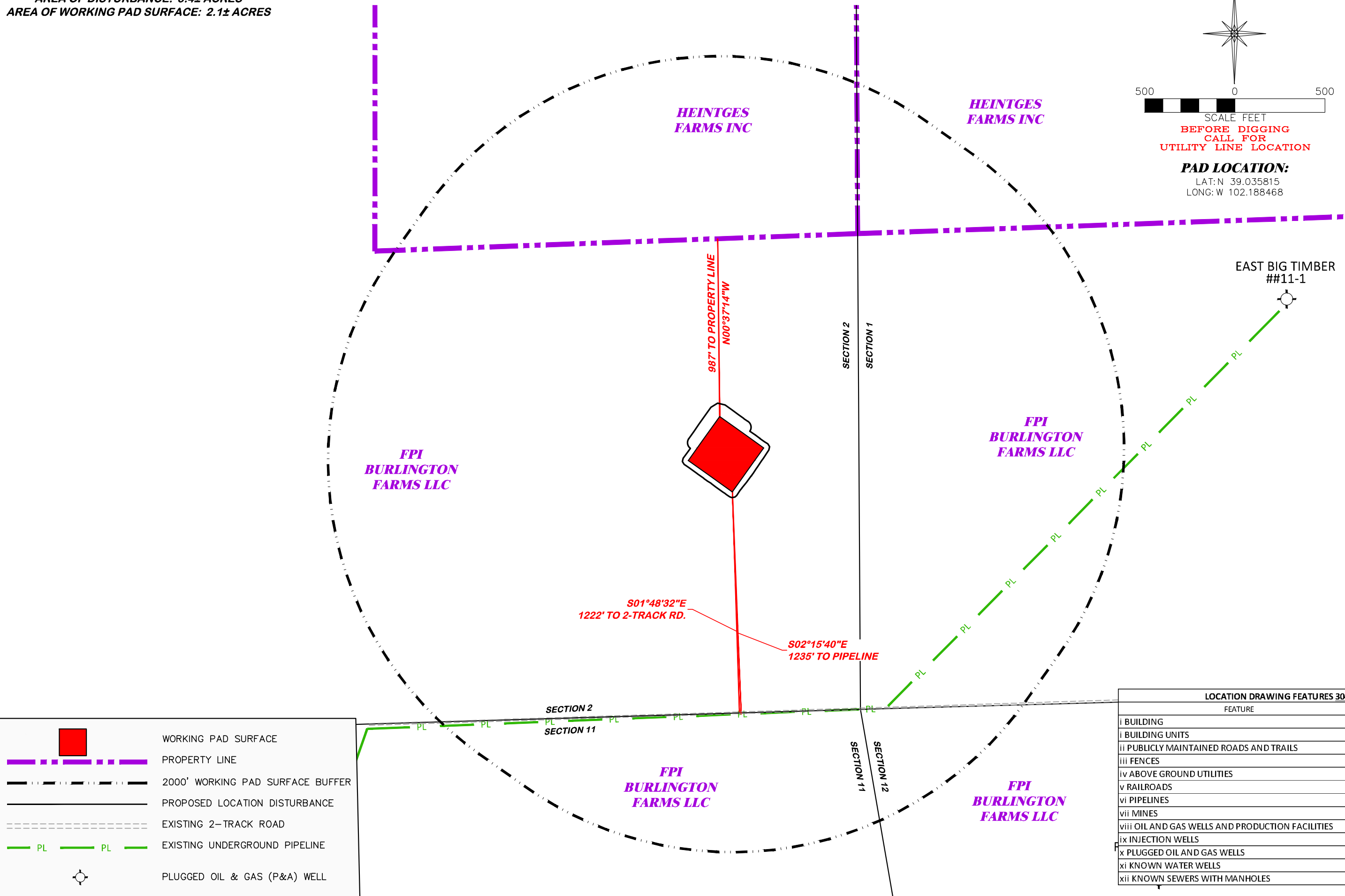
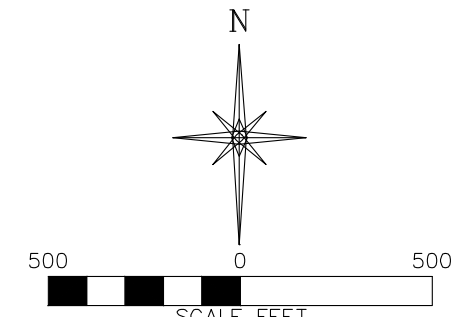
DRAWN: 8/14/22 - JMB/DEH SCALE: 1" = 500'  
 REVISED: 1/23/23 - DWB DRG JOB No. 22270  
 PAD ADJUSTMENT 304b(7)A LOC AERIAL

LOCATION DRAWING FEATURES 304b(7)A	
FEATURE	DISTANCE
i BUILDING	5280'
i BUILDING UNITS	5280'
ii PUBLICLY MAINTAINED ROADS AND TRAILS	5280'
iii FENCES	5280'
iv ABOVE GROUND UTILITIES	4384' NW
v RAILROADS	5280'
vi PIPELINES	1235' S
vii MINES	5280'
viii OIL AND GAS WELLS AND PRODUCTION FACILITIES	5280'
ix INJECTION WELLS	5280'
x PLUGGED OIL AND GAS WELLS	3017' NE
xi KNOWN WATER WELLS	5280'
xii KNOWN SEWERS WITH MANHOLES	5280'

UNGRADED ELEVATION: 4139.4'  
 FINAL ELEVATION: 4138.2'  
 AREA OF DISTURBANCE: 3.4± ACRES  
 AREA OF WORKING PAD SURFACE: 2.1± ACRES

#1 WAVETECH FPI BURLINGTON FARMS 43-2

UNGRADED ELEVATION: 4139.4'  
 FINAL ELEVATION: 4138.2'  
 AREA OF DISTURBANCE: 3.4± ACRES  
 AREA OF WORKING PAD SURFACE: 2.1± ACRES



	WORKING PAD SURFACE
	PROPERTY LINE
	2000' WORKING PAD SURFACE BUFFER
	PROPOSED LOCATION DISTURBANCE
	EXISTING 2-TRACK ROAD
	EXISTING UNDERGROUND PIPELINE
	PLUGGED OIL & GAS (P&A) WELL

LOCATION DRAWING FEATURES 304b(7)A	
FEATURE	DISTANCE
i BUILDING	5280'
i BUILDING UNITS	5280'
ii PUBLICLY MAINTAINED ROADS AND TRAILS	5280'
iii FENCES	5280'
iv ABOVE GROUND UTILITIES	4384' NW
v RAILROADS	5280'
vi PIPELINES	1235' S
vii MINES	5280'
viii OIL AND GAS WELLS AND PRODUCTION FACILITIES	5280'
ix INJECTION WELLS	5280'
x PLUGGED OIL AND GAS WELLS	3017' NE
xi KNOWN WATER WELLS	5280'
xii KNOWN SEWERS WITH MANHOLES	5280'

**DRG RIFFIN & ASSOCIATES, INC.**  
 1414 ELK ST., ROCK SPRINGS, WY 82901  
 (307) 962-5028

SCALE: 1" = 500'  
 DRAWN: 8/14/22 - JMB/DEH  
 REVISED: 1/23/23 - DWB  
 DRG JOB No. 22270  
 304b(7)A LOC DWG

PAD ADJUSTMENT

LOCATION DRAWING

WAVETECH HELIUM, INC.  
 #1 WAVETECH FPI BURLINGTON FARMS 43-2  
 NESE, SECTION 2, T. 12 S., R. 43 W., 6th P.M.,  
 CHEYENNE COUNTY, COLORADO