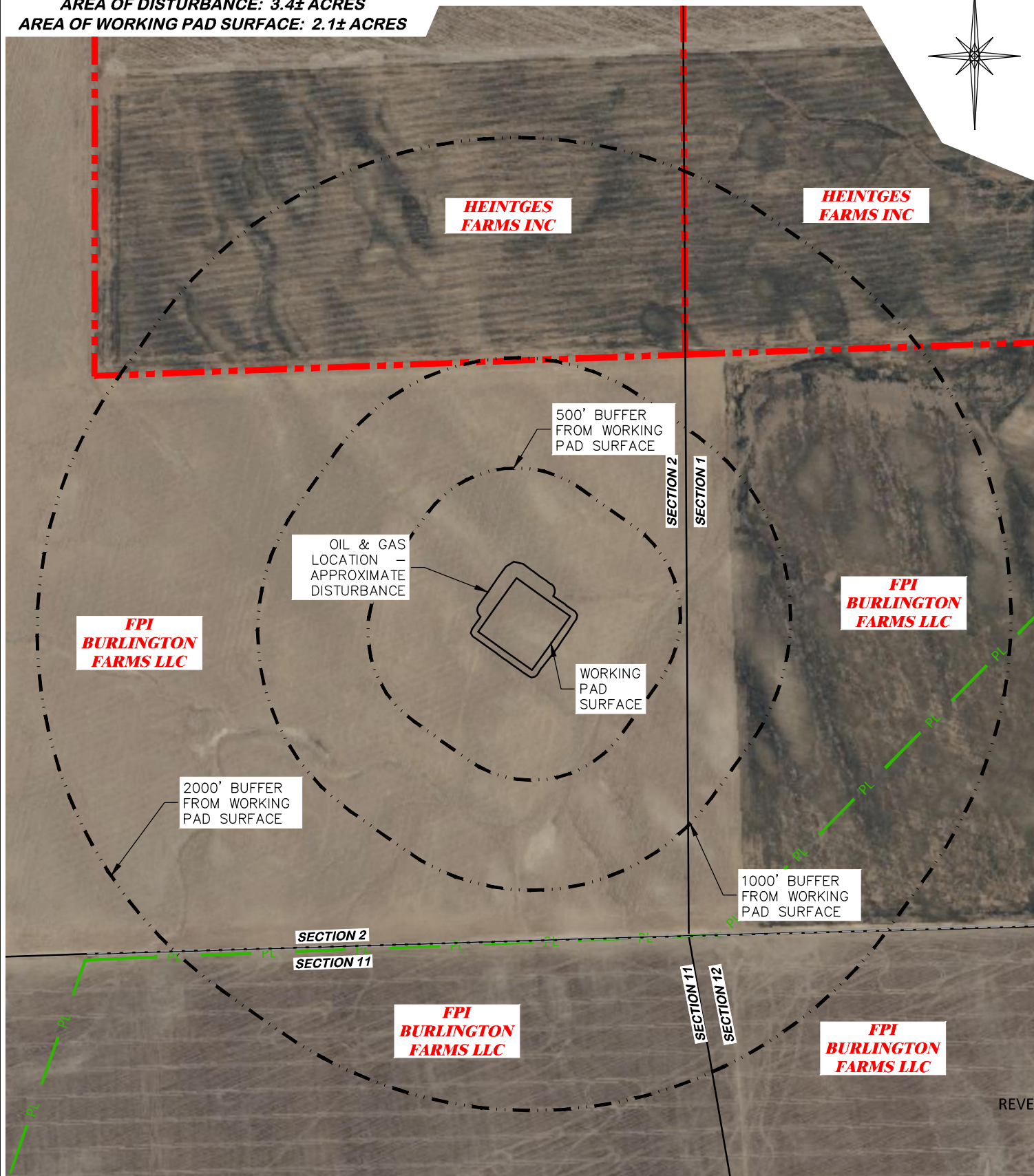
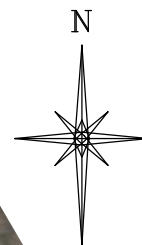


UNGRADED ELEVATION: 4139.4'
 FINAL ELEVATION: 4138.2'
 AREA OF DISTURBANCE: 3.4± ACRES
 AREA OF WORKING PAD SURFACE: 2.1± ACRES



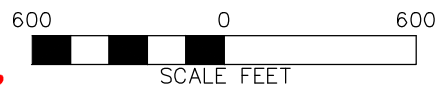
CULTURAL ITEMS:

MEASURED FROM NEAREST EDGE OF THE PROPOSED WORKING PAD SURFACE

BUILDING	5280' +
RESIDENTIAL BUILDING	5280' +
HIGH OCCUPANCY BUILDING	5280' +
DOAA	5280' +
PUBLIC ROAD	5280' +
ABOVE GROUND UTILITY	4384 NW
RAILROAD	5280' +
PROPERTY LINE	987' N
SCHOOL FACILITY	5280' +
SCHOOL PROPERTY LINE	5280' +
CHILDCARE FACILITY	5280' +
SCHOOL PROPERTY LINE	5280' +
DI COMMUNITY	5280' +

CULTURAL FEATURE INFORMATION

PRODUCTION FEATURE	0-500 FEET	501 - 1,000 FEET	1,001 - 2,000 FEET
	NUMBER	NUMBER	NUMBER
BUILDING	0	0	0
RESIDENTIAL BUILDING	0	0	0
HIGH OCCUPANCY BUILDING	0	0	0
SCHOOL PROPERTIES	0	0	0
SCHOOL FACILITIES	0	0	0
DOAA	0	0	0



#1 WAVETECH FPI BURLINGTON FARMS 43-2



CULTURAL DISTANCES DRAWING

CULTURAL DISTANCES
WAVETECH HELIUM, INC.
#1 WAVETECH FPI BURLINGTON FARMS 43-2
NESE, SECTION 2, T. 12 S., R. 43 W., 6th P.M.,
CHEYENNE COUNTY, COLORADO

DRAWN: 8/4/22 - JMB/DEH

SCALE: 1" = 600'

REVISED: 1/23/23 - DWB

DRG JOB No. 22270

PAD ADJUSTMENT

304b(3)C CULTURAL