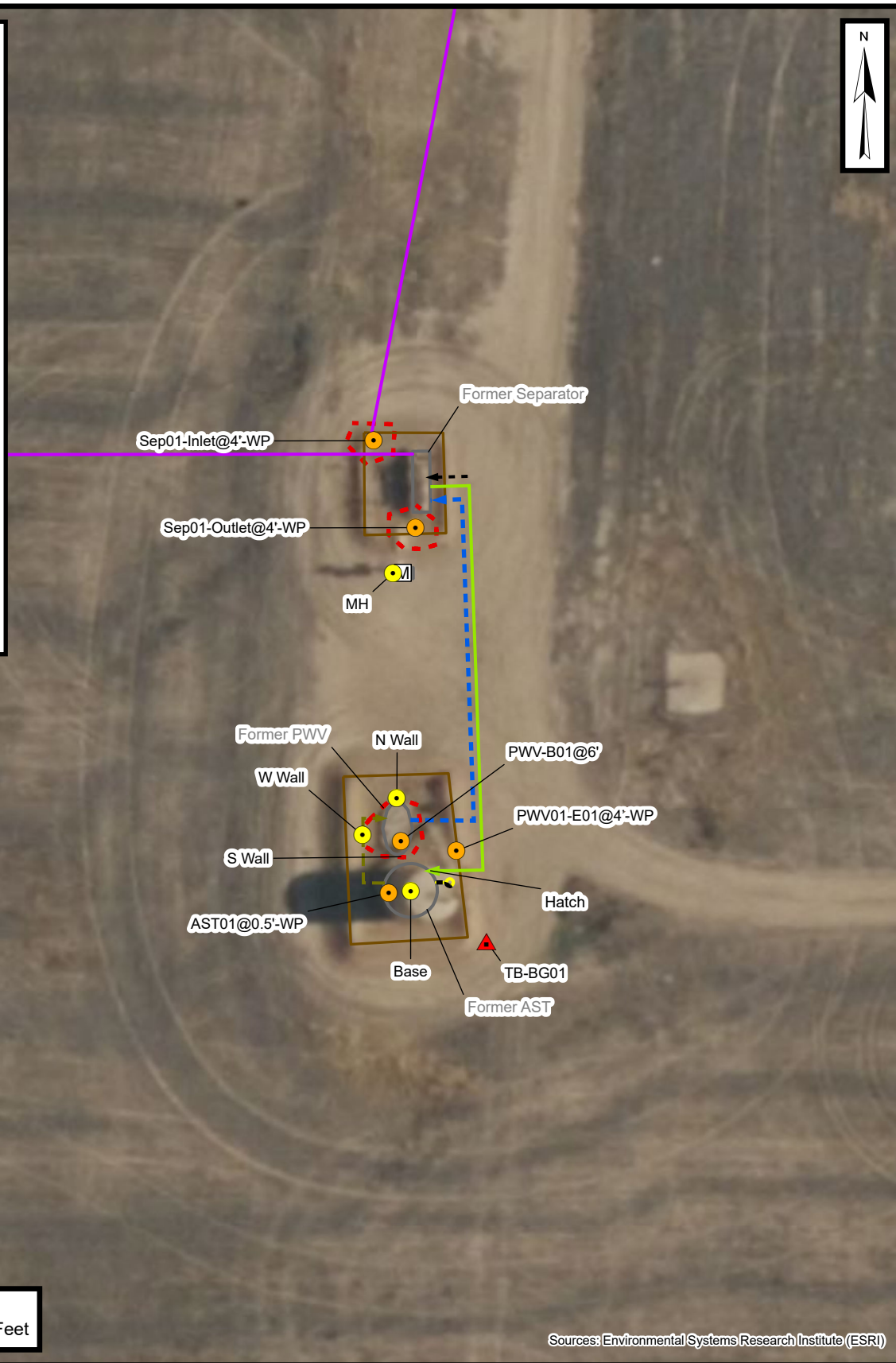


Legend

- ▲ Background Soil Sample
- Soil Sample
- Soil Screening
- M Meter House
- ▶ Former Drain Line
- - - Former Drip Containment
- Former Flowline
- - -▶ Former Gas Line
- ▶ Former Oil Dump
- - -▶ Former Water Dump
- Former Earthen Berm
- Former Infrastructure
- Excavation Extent

Notes

AST: Above Ground Storage Tank
 PWV: Produced Water Vessel
 ECD: Emission Control Device



0 30 60 Feet

Sources: Environmental Systems Research Institute (ESRI)

Wellhead Excavation Site Map (3/2/23)

Pace Connelly Gas Unit 1-26
 Kerr-McGee Oil & Gas Onshore, LP
 NESW SEC 26-T2N-R68W
 Weld County, Colorado

Project Number: 09A1417237



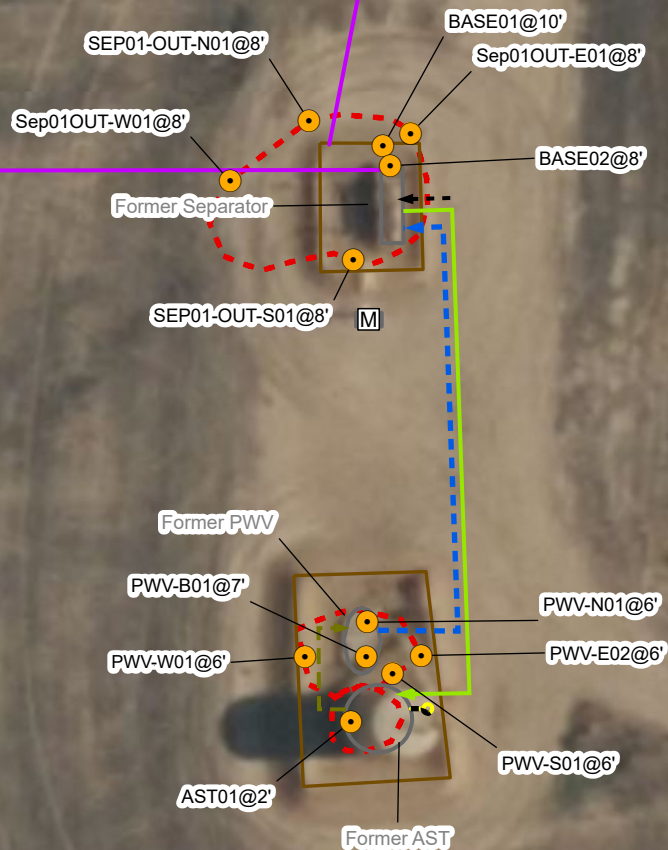
FIGURE
1a

Legend

- Soil Sample
- M Meter House
- Former Drain Line
- Former Drip Containment
- Former Flowline
- - - Former Gas Line
- Former Oil Dump
- - - Former Water Dump
- Former Earthen Berm
- Former Infrastructure
- Excavation Extent

Notes

AST: Above Ground Storage Tank
 PWV: Produced Water Vessel
 ECD: Emission Control Device



0 30 60
 Feet

Sources: Environmental Systems Research Institute (ESRI)

Wellhead Excavation Site Map (3/29/23)













Pace Connolly Gas Unit 1-26
 Kerr-McGee Oil & Gas Onshore, LP
 NESW SEC 26-T2N-R68W
 Weld County, Colorado

Project Number: 09A1417237



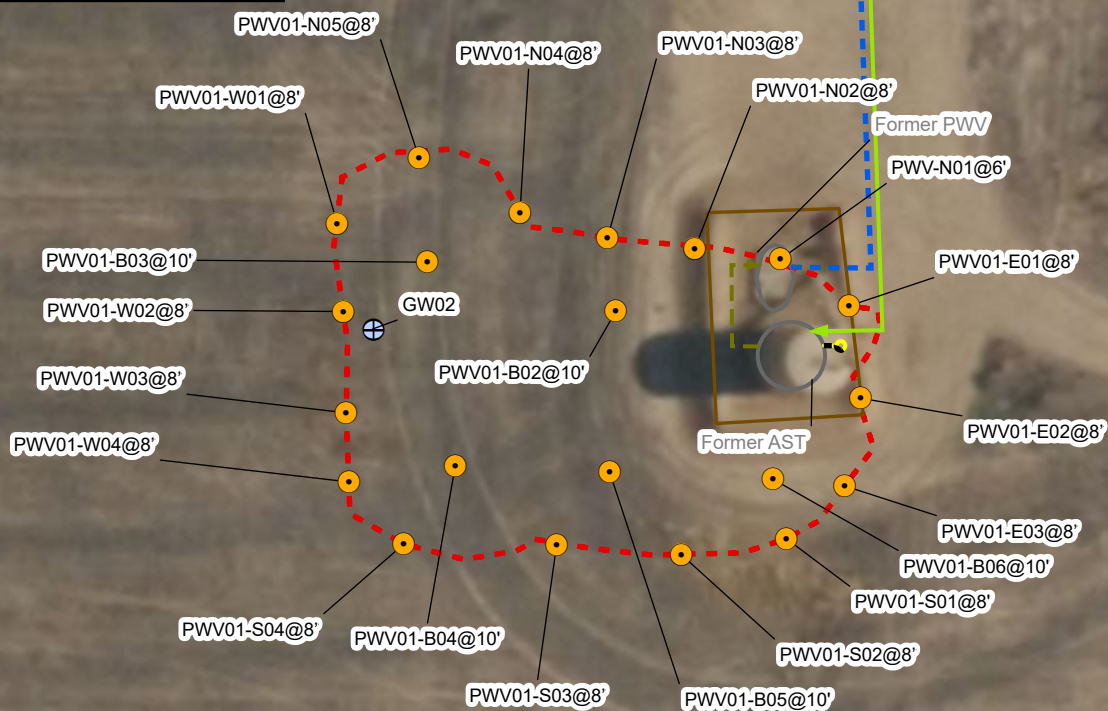
FIGURE
 1b

Legend

-  Groundwater Sample
-  Soil Sample
-  Meter House
-  Former Drain Line
-  Former Drip Containment
-  Former Flowline
-  Former Gas Line
-  Former Oil Dump
-  Former Water Dump
-  Former Earthen Berm
-  Former Infrastructure
-  Excavation Extent

Notes

AST: Above Ground Storage Tank
 PWV: Produced Water Vessel
 ECD: Emission Control Device



Sources: Environmental Systems Research Institute (ESRI)

Wellhead Excavation Site Map (4/17/23)

Pace Connolly Gas Unit 1-26
 Kerr-McGee Oil & Gas Onshore, LP
 NESW SEC 26-T2N-R68W
 Weld County, Colorado

Project Number: 09A1417237



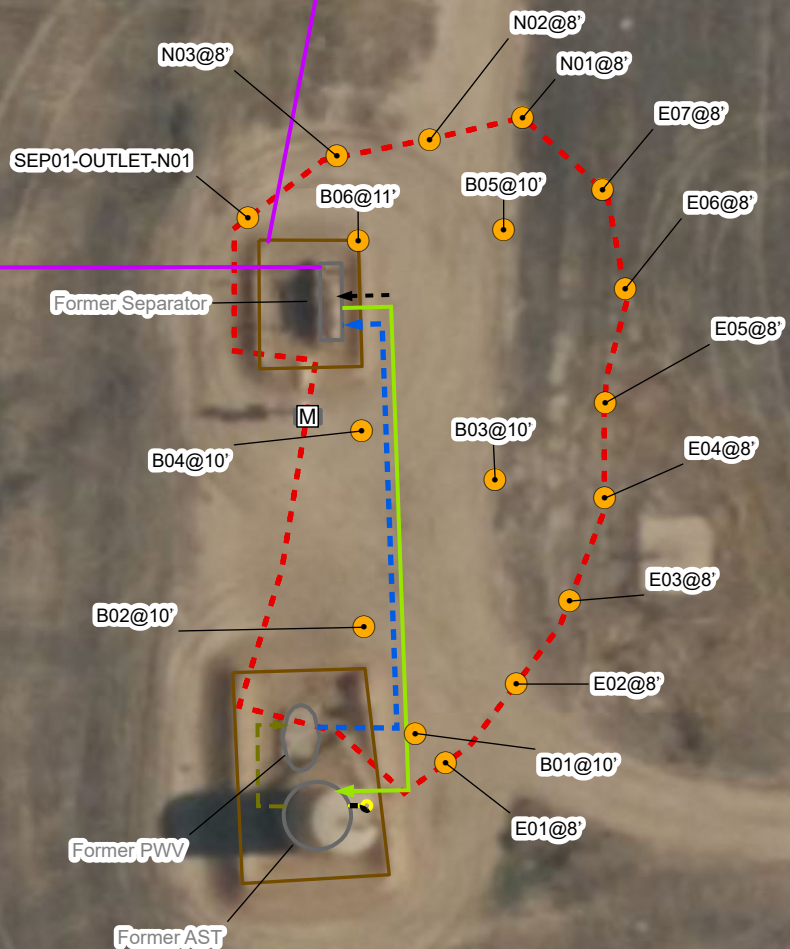
FIGURE
1c

Legend

- Soil Sample
- M Meter House
- Former Drain Line
- - - Former Drip Containment
- Former Flowline
- - - Former Gas Line
- Former Oil Dump
- - - Former Water Dump
- Former Earthen Berm
- Former Infrastructure
- - - Excavation Extent

Notes

AST: Above Ground Storage Tank
 PWV: Produced Water Vessel
 ECD: Emission Control Device



Sources: Environmental Systems Research Institute (ESRI)

Wellhead Excavation Site Map (4/21/23)

Pace Connolly Gas Unit 1-26
 Kerr-McGee Oil & Gas Onshore, LP
 NESW SEC 26-T2N-R68W
 Weld County, Colorado

Project Number: 09A1417237

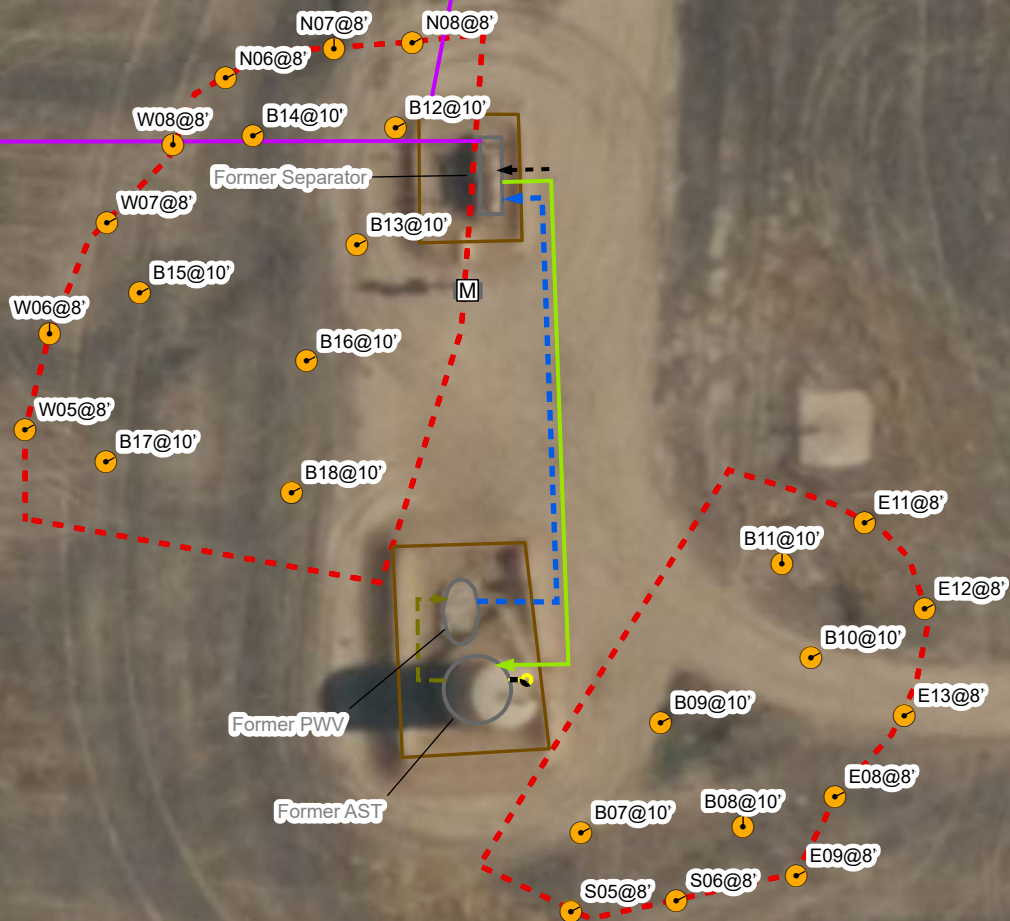
FIGURE
1d

Legend

- Soil Sample
- M Meter House
- Former Drain Line
- Former Drip Containment
- Former Flowline
- - - Former Gas Line
- Former Oil Dump
- Former Water Dump
- Former Earthen Berm
- Former Infrastructure
- Excavation Extent

Notes

AST: Above Ground Storage Tank
 PWV: Produced Water Vessel
 ECD: Emission Control Device



Sources: Environmental Systems Research Institute (ESRI)

Wellhead Excavation Site Map (5/5/23)

Pace Connelly Gas Unit 1-26
 Kerr-McGee Oil & Gas Onshore, LP
 NESW SEC 26-T2N-R68W
 Weld County, Colorado

Project Number: 09A1417237

FIGURE
1e

Legend

- Soil Sample
- M Meter House
- ▶ Former Drain Line
- - - Former Drip Containment
- Former Flowline
- - -▶ Former Gas Line
- ▶ Former Oil Dump
- - -▶ Former Water Dump
- Former Earthen Berm
- Former Infrastructure
- Excavation Extent

Notes

AST: Above Ground Storage Tank
 PWV: Produced Water Vessel
 ECD: Emission Control Device



Former Separator

M

Former PWV

Former AST

B01@12'

W09@8'

B19@12'

B20@12'

B21@12'

W10@8'

S07@8'

S08@8'

S09@8'

S10@8'

0 30 60
 Feet

Sources: Environmental Systems Research Institute (ESRI)

Wellhead Excavation Site Map (7/14/23)

Pace Connolly Gas Unit 1-26
 Kerr-McGee Oil & Gas Onshore, LP
 NESW SEC 26-T2N-R68W
 Weld County, Colorado

Project Number: 09A1417237

FIGURE
1f



Legend

- Soil Sample
- M Meter House
- ▶ Former Drain Line
- - - Former Drip Containment
- Former Flowline
- - -▶ Former Gas Line
- ▶ Former Oil Dump
- - -▶ Former Water Dump
- Former Earthen Berm
- Former Infrastructure
- Excavation Extent

Notes

AST: Above Ground Storage Tank
 PWV: Produced Water Vessel
 ECD: Emission Control Device



Former Separator

M

Former PWV

Former AST

N09@6'

B22@8'

E14@6'

E15@6'

S11@6'

0 30 60
 Feet

Sources: Environmental Systems Research Institute (ESRI)

Wellhead Excavation Site Map (8/8/23)

Pace Connelly Gas Unit 1-26
 Kerr-McGee Oil & Gas Onshore, LP
 NESW SEC 26-T2N-R68W
 Weld County, Colorado

Project Number: 09A1417237

FIGURE
 1g



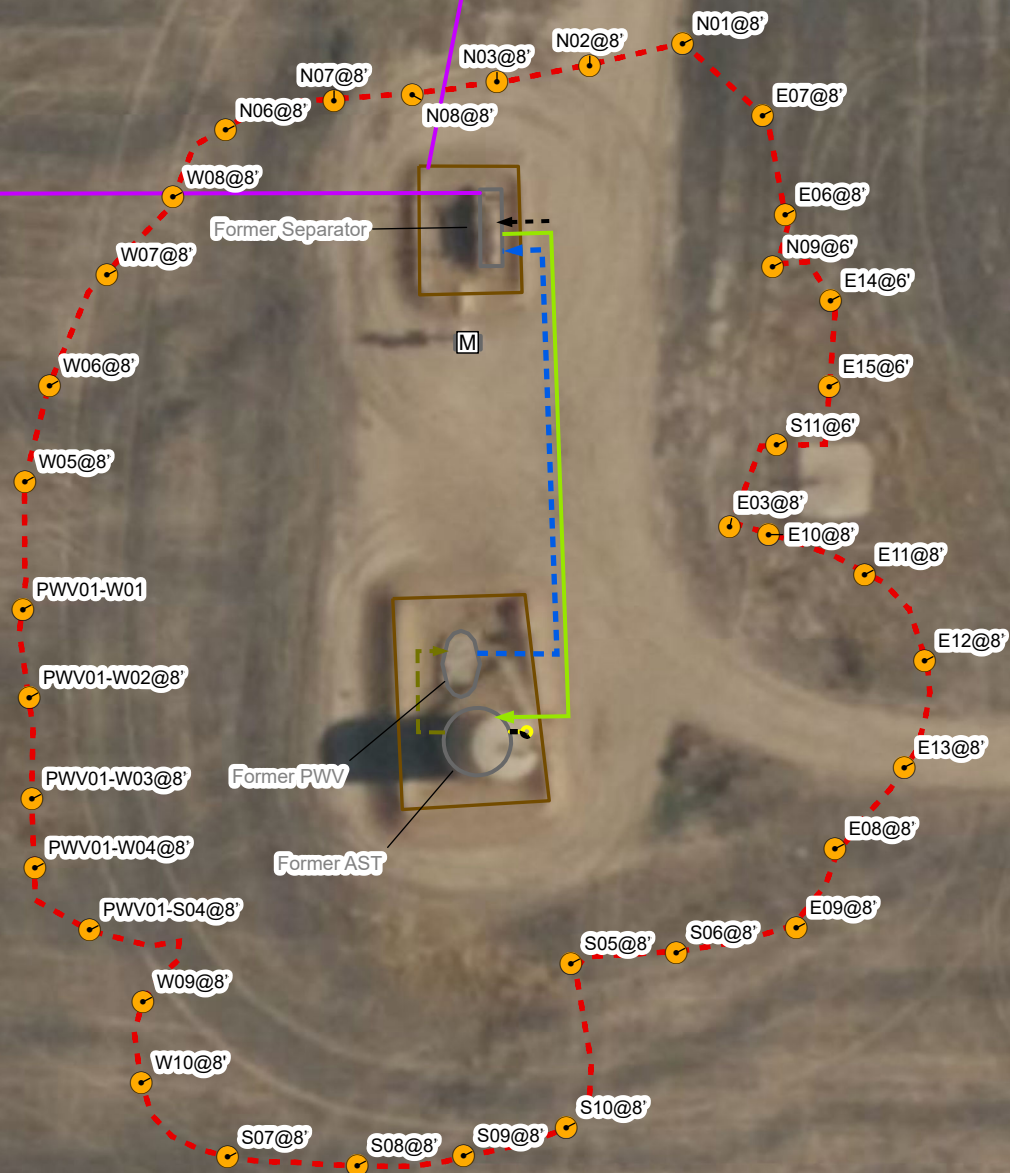
Default Folder: C:\Users\justin\OneDrive - ENSOLUM, LLC\Ensolum GIS\0 - Projects\Kerr-McGee Oil & Gas Onshore, LP\09A1417237 - Pace Connolly Gas Unit 1-26 FZ7s

Legend

- Soil Sample
- Meter House
- Former Drain Line
- Former Drip Containment
- Former Flowline
- Former Gas Line
- Former Oil Dump
- Former Water Dump
- Former Earthen Berm
- Former Infrastructure
- Excavation Extent

Notes

AST: Above Ground Storage Tank
PWV: Produced Water Vessel
ECD: Emission Control Device



0 30 60 Feet

Sources: Environmental Systems Research Institute (ESRI)

Excavation Site Map

Pace Connolly Gas Unit 1-26
Kerr-McGee Oil & Gas Onshore, LP
NESW SEC 26-T2N-R68W
Weld County, Colorado

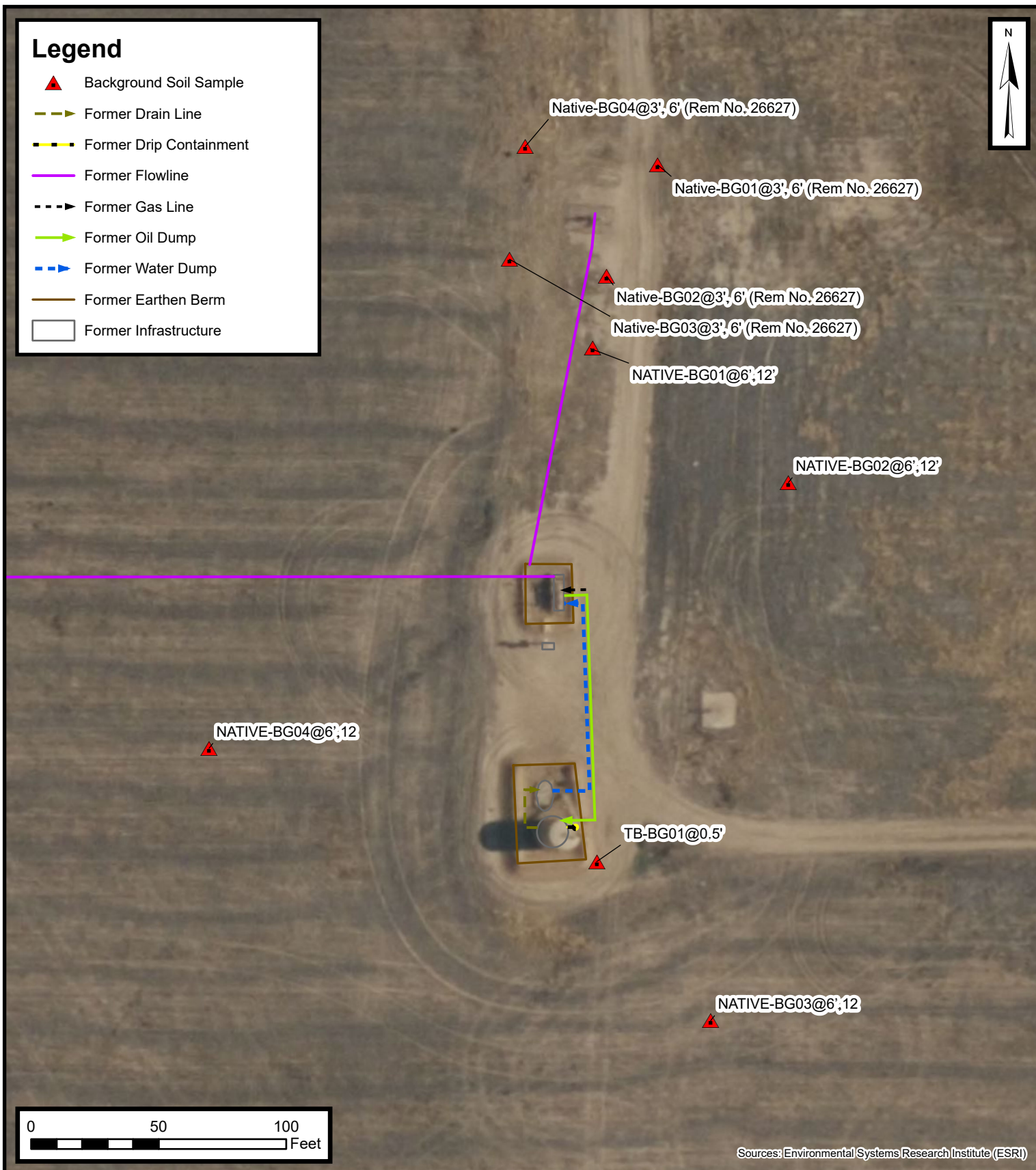
Project Number: 09A1417237



FIGURE
1h

Legend

- ▲ Background Soil Sample
- ▶ Former Drain Line
- - - Former Drip Containment
- Former Flowline
- - - Former Gas Line
- ▶ Former Oil Dump
- - -▶ Former Water Dump
- Former Earthen Berm
- Former Infrastructure



Background Soil Sample Locations Map

Pace Connelly Gas Unit 1-26
Kerr-McGee Oil & Gas Onshore, LP
NESW SEC 26-T2N-R68W
Weld County, Colorado

Project Number: 09A1417237

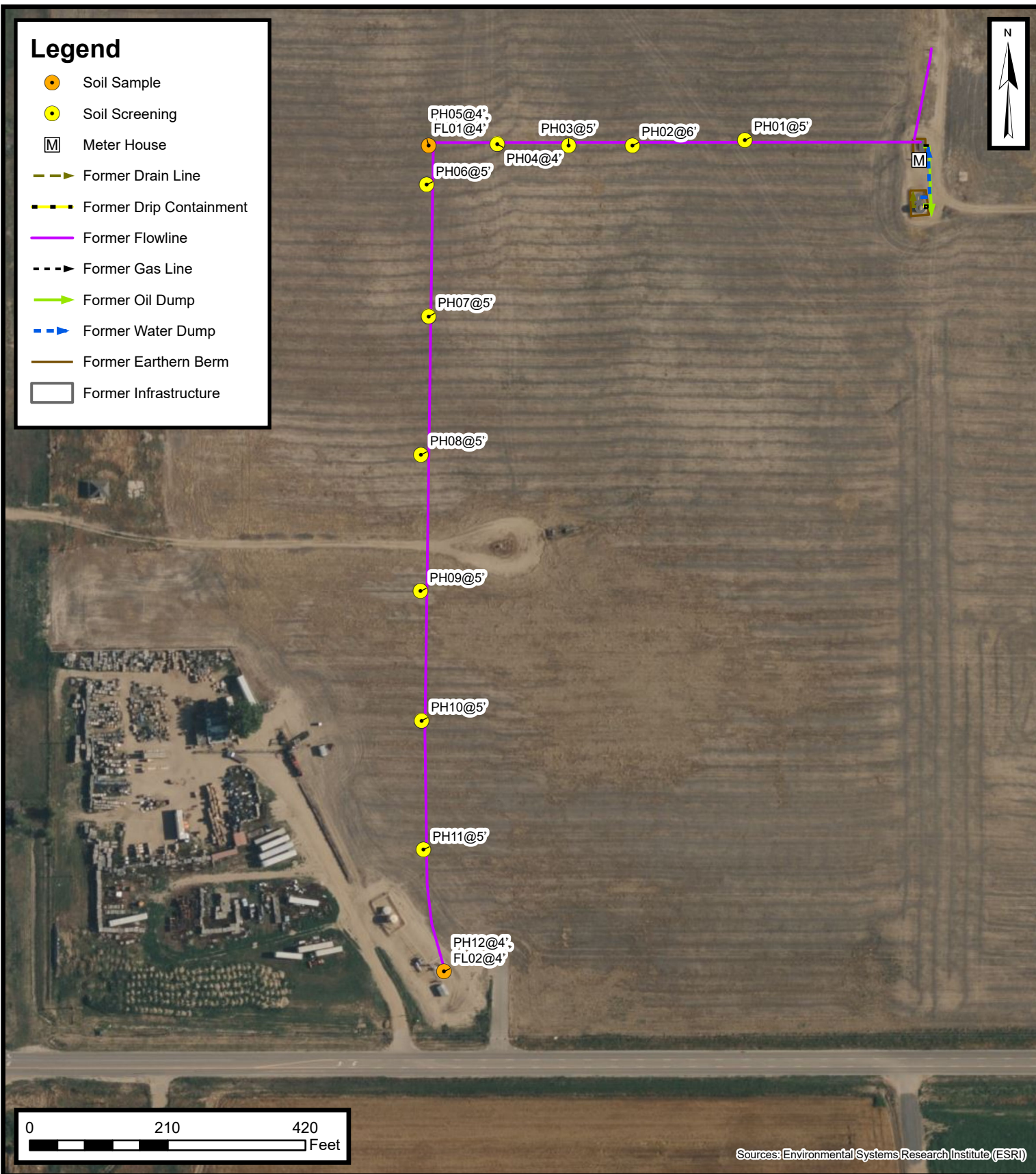
FIGURE

2

Default Folder: C:\Users\justin\OneDrive - ENSOLUM, LLC\Ensolum GIS\0 - Projects\Kerr-McGee Oil & Gas Onshore, LP\09A1417237 - Pace Connolly Gas Unit 1-26 F27s

Legend

- Soil Sample
- Soil Screening
- M Meter House
- Former Drain Line
- Former Drip Containment
- Former Flowline
- - - Former Gas Line
- Former Oil Dump
- Former Water Dump
- Former Earthen Berm
- Former Infrastructure



Flowline Excavation Map

Pace Connolly Gas Unit 1-26
Kerr-McGee Oil & Gas Onshore, LP
NESW SEC 26-T2N-R68W
Weld County, Colorado

Project Number: 09A1417237

FIGURE

3

