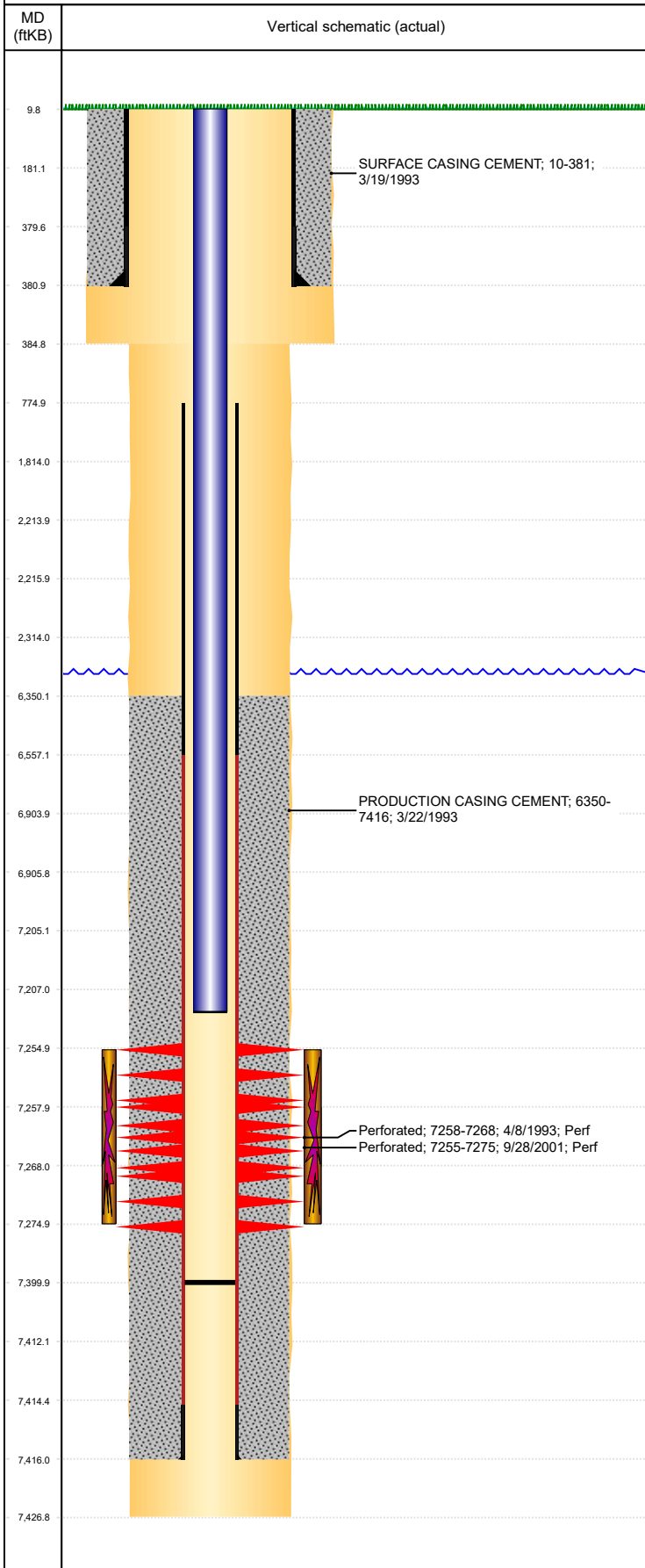




P&A Wellbore For State

Well Name: GOLLNER O27-07

Land, Original Hole, 8/31/2023 10:17:59 AM



Well Header

Surface UWI 0512315972	Business Unit Rockies	Gov Auth Dist	Prod Tree Loc Land
Orig. KB to Gnd (ft) 10.00	Original Spud Date 3/19/1993	Abandon Date	Well Sub-Status PR
High... N			
Comment			

Surface Location (Congressional)

Qtr 3 SW	Qtr 4 NE	Section 27	Twonshp 4	Twonsh... N	Range 67	Rng E/... W	Latitude (°) 40.28489883 2	Longitude (°) -104.875035871
-------------	-------------	---------------	--------------	----------------	-------------	----------------	----------------------------------	---------------------------------

Wellbore Sections

Section Des	Hole Size (in)	Act Top (ftKB)	Act Btm (ftKB)
SURFACE	12 1/4	10.0	385.0
PRODUCTION	7 7/8	385.0	7,427.0

Casing Strings

Csg Des	Run Date	OD (in)	Wt/Len (lb/ft)	Grade	Top Depth (MD) (ftKB)	Set Depth (MD) (ftKB)
Surface	3/19/1993	8 5/8	24.00		10	381
Production Casing	3/22/1993	2 7/8	8.70		10	7416

Cement

Des	Start Date	Top (ftKB)	Btm (ftKB)
SURFACE CASING CEMENT	3/19/1993	10.0	381.0
PRODUCTION CASING CEMENT	3/22/1993	6,350.0	7,416.0

Zone Statuses

Zone Name	Status Date	Status	Fluid Type	Job	Prod Method
CODELL	5/9/2017	SI			
CODELL	5/5/2018	PR			

Perforation Data

Linked Zone	Explosive Type	Entered Shot Total	Top (ftKB)	Btm (ftKB)	Date
CODELL, Original Hole		80	7,255.0	7,275.0	9/28/2001
CODELL, Original Hole		40	7,258.0	7,268.0	4/8/1993

Stimulation Intervals

Zone	Start Date	Top (ftKB)	Btm (ftKB)
CODELL, Original Hole	10/4/2001	7,255.0	7,275.0
CODELL, Original Hole	9/14/2009	7,255.0	7,275.0
CODELL, Original Hole	4/9/1993	7,258.0	7,268.0

Other In Hole

Run Date	Des	Make	OD (in)	Top (ftKB)	Btm (ftKB)

Logs

Date	Type	Depth Top (MD) (ftKB)	Btm (ftKB)
3/22/1993	COMPENSATED DENSITY	4,000	7,392.0
3/22/1993	INDUCTION	4,000	4,750.0
4/1/1993	CEMENT BOND	4,000	7,392.0

Plug Back Total Depths

Date	Type	Com	PBTD (ftKB)
9/8/2009	FILL		7,400
9/16/2009	FILL		7,400