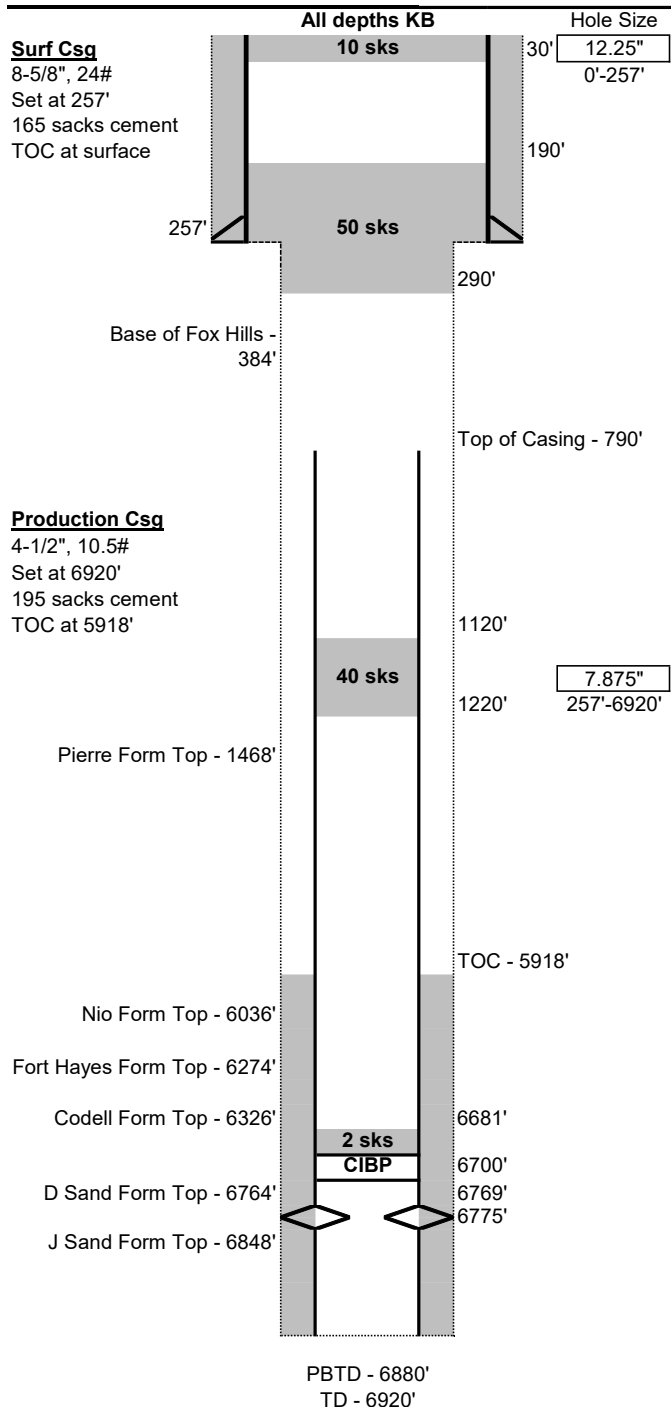


## Current Wellbore Schematic

Well Name: Roth 12-7  
 Location: 2180' FSL, 790' FWL, NWSW Sec 7, T7N, R59W  
 County: Weld  
 API #: 05-123-14399  
 Co-ordinates: 40.588386 / -104.028180  
 Elevations: GROUND: 4898'  
                   KB: 4908'  
 Depths (KB): PBTD: 6880'  
                   TD: 6920'

Date Prepared: 8/12/2023  
 Last Updated: 8/14/2023  
 Spud Date: 11/8/1989  
 Completion Start Date: 11/13/1989  
 Last Workover Date: 8/15/2001  
 Prepared by: Jake Van Bramer  
 Updated by: --



**Surface Casing:**  
 Drilled 12-1/4" surface hole to 257'  
 Set 8-5/8", 24# casing at 257'  
 Cemented with 165 sks  
 TOC at surface

**Production Casing:**  
 Drilled 7-7/8" production hole to 6,920'  
 Set 4-1/2", 10.5# casing at 6,920'  
 Cemented with 195 sks  
 TOC at 5,918' (Calc)

**Open Hole:**  
 7-7/8" Open Hole from 257'-790', expected to be washed out

**Tubing:**  
 None

**Rods:**  
 None

**Perforations:**  
 Perfs: 24 Holes from 6,769'-6,775'

**P&A Plugs:**  
 1. 10 sks from 30' to surface  
 2. 50 sks from 190'-290'  
 3. 40 sks from 1120'-1220'  
 4. 2 sks on top of CIBP from 6681'-6700'

**Additional Notes:**  
 Pump 13,000 gal. pad - 3,000 gal. w/ 1 ppg 20/40 sd. - 5,000 gal. w/ 2 ppg - 5,000 gal. w/ 3 ppg - 8,000 gal. w/ 3 ppg, 1,000 gal. w/ 4 ppg 20/40 westprop lite. Break down with 30 bbls. MRS-1

**Initial Potential Test:**  
 (12/28/1989) 24 hour test  
 225 bbl oil, 231 mcf gas, ~1 bbl water

Formation Tops:	
Base of the Fox Hills	384'
Pierre	1468'
Niobrara	6036'
Fort Hayes	6274'
Codell	6326'
D Sand	6764'
J Sand	6848'

## Proposed Wellbore Schematic

Well Name: Roth 12-7  
 Location: 2180' FSL, 790' FWL, NWSW Sec 7, T7N, R59W  
 County: Weld  
 API #: 05-123-14399  
 Co-ordinates: 40.588386 / -104.028180  
 Elevations: GROUND: 4898'  
 KB: 4908'  
 Depths (KB): PBTD: 6880'  
 TD: 6920'

Date Prepared: 8/12/2023  
 Last Updated: 8/14/2023  
 Spud Date: 11/8/1989  
 Completion Start Date: 11/13/1989  
 Last Workover Date: 8/15/2001  
 Prepared by: Jake Van Bramer  
 Updated by: --

