

**Robert L Bayless Producer LLC  
Deer Creek State 1 (16-4-91)  
Loc ID: 312953**



**Access road into location**



**Entrance to location**

**Robert L Bayless Producer LLC  
Deer Creek State 1 (16-4-91)  
Loc ID: 312953**



**New gravel around pumping unit**



**Leaking equipment**

Robert L Bayless Producer LLC  
Deer Creek State 1 (16-4-91)  
Loc ID: 312953



Leaking equipment

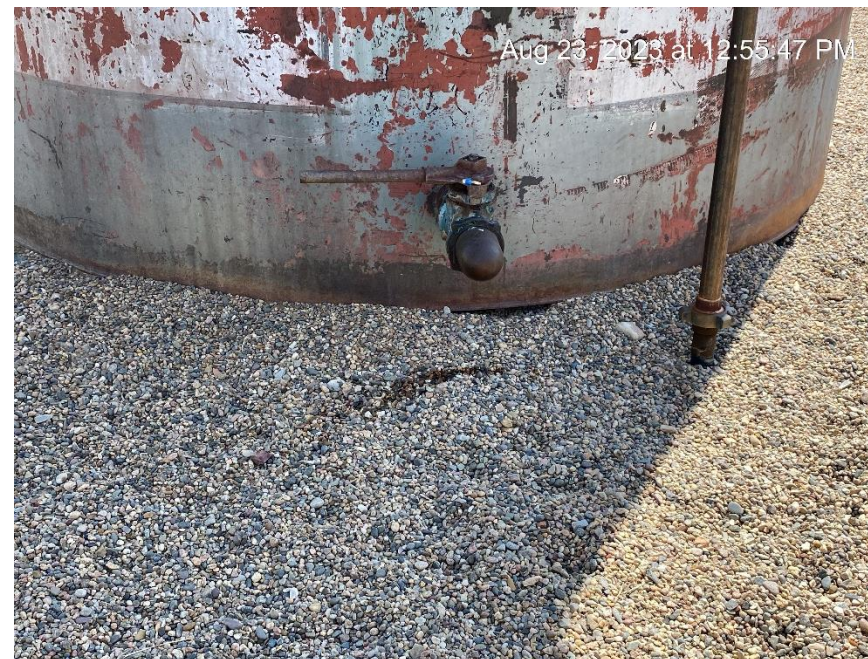


Staining

**Robert L Bayless Producer LLC  
Deer Creek State 1 (16-4-91)  
Loc ID: 312953**



**Erosion and sediment migration from location**



**Spill**

**Robert L Bayless Producer LLC  
Deer Creek State 1 (16-4-91)  
Loc ID: 312953**



**Location from Northeast corner**



**Location from Northwest corner**

**Robert L Bayless Producer LLC  
Deer Creek State 1 (16-4-91)  
Loc ID: 312953**



**Location from Southwest corner**



**Location from Southeast corner**