



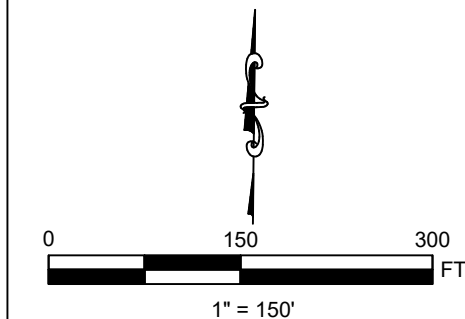
RINN VALLEY WEST  
SESE\_18\_2N\_68W

### NOTES





**\*\*UPDATED TOPOGRAPHIC DATA COLLECTED BY RPG RESOURCES BY USE OF UAV IN JULY 2023\*\***

**FIELD OBSERVED DISTURBANCE AREA: 12.51 ACRES**

**ACTUAL INTERIM RECLAMATION AREA: 2.61 ACRES**



### LEGEND

-  ACCESS ROAD
-  FIELD OBSERVED DISTURBANCE AREA
-  ACTUAL INTERIM RECLAMATION AREA
-  WELL HEAD

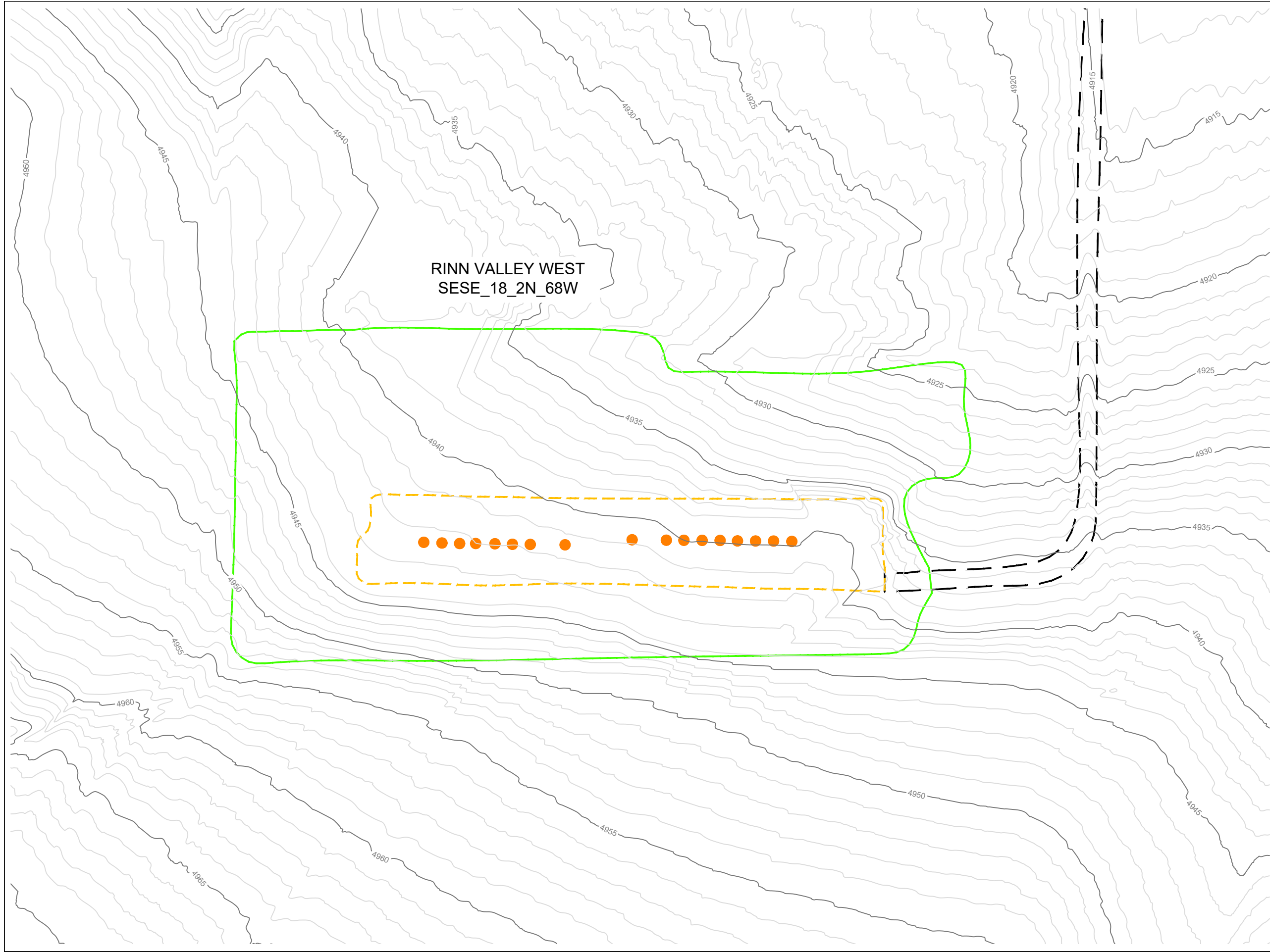


### RINN VALLEY WEST AERIAL INT REC EXHIBITS

SECTION 18, TOWNSHIP 2N, RANGE 68W,  
WELD COUNTY, COLORADO

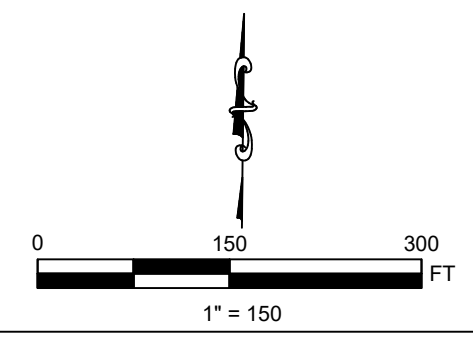
SHEET NAME: PAD AERIAL	SHEET NO. 1 OF 2
---------------------------	---------------------

S:\RPGR\00 CAD\data\CO\CIVITAS\EXTRACTION\RINN VALLEY WEST\FORM 45\EXHIBIT PRODUCTION\RINN VALLEY WEST AERIAL INT REC EXHIBITS.dwg Last Saved By: Frank Sonetti 8/25/2023 11:25 AM Plotted By: Frank Sonetti 8/25/2023 12:01 PM



**NOTES**

**\*\*UPDATED TOPOGRAPHIC DATA COLLECTED BY RPG RESOURCES BY USE OF UAV IN AUGUST 2023\*\***  
**FIELD OBSERVED DISTURBANCE AREA: 12.51 ACRES**  
**ACTUAL INTERIM RECLAMATION AREA: 2.61 ACRES**



**LEGEND**

- 4900 MAJOR CONTOUR
- MINOR CONTOUR
- ACCESS ROAD
- FIELD OBSERVED DISTURBANCE AREA
- ACTUAL INTERIM RECLAMATION AREA
- WELL HEAD



**RINN VALLEY WEST  
 AERIAL INT REC EXHIBITS**

SECTION 18, TOWNSHIP 2N, RANGE 68W,  
 WELD COUNTY, COLORADO

SHEET NAME: PAD TOPO	SHEET NO. 2 OF 2
-------------------------	---------------------