

OPERATOR - DYER* J G - #25900
Reinholdt Schmidt #1
 05-087-06647

Proposed DTA: 8/21/2023
 OC

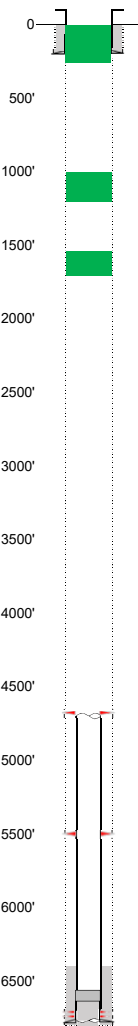
Loc. # 394744
 FIELD NAME PLAINSMAN - #69250
 Spud Date 9/16/1963
 Basin DENVER - JULESBURG
 Location SWNE 5 6N 60W 6
 Elevation GL (ft) 4752
 Elevation KB (ft) 4742
 TD (ft) 6761
 PBTD (ft) UNK
Formation Tops

LARAMIE-FOX HILLS TOP - 180'
 LARAMIE-FOX HILLS BASE - 1002'

FORT HAYS - 6267'
 CODELL - 6287'
 BENTONITE - 6607'
 D SAND - 6709'

Place 105 sx surface plug from 251' to surface. Topped off.
 Set 70 sx cement balance plug at 1209'. Tagged @ 914'.
 Set 70 sx cement balance plug at 1710'. Tagged @ 1510'.

AS PLUGGED



Existing Casing and Cement Coverage
 SURF: Size: 8.625", Hole Size: 10.5 in.
 Depth: 201 ft., Weight: 24
 Cement: 135 sx, Top: 0 ft., Method: Vis

FOX HILLS TOP - 180'
 FOX HILLS BASE - 1002'
 Deepest DWR w/in 1 mi. = 1580'
 Could only get tubing down to 1710'.
 1ST, Size: 5.5", Hole Size: 7.875"
 Depth: 6763', Weight: 15.5
 Cement: 125 sx, TOC: 6405', Method: CALC

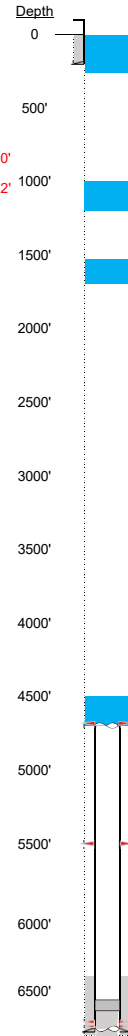
Casing shot off at 4668' and 145 jts. of 5 1/2" casing pulled measuring 4668'.

Casing shot off at 5500' but could not be pulled.

tubing - NONE
 TOC = 6405' (CALC)
 D Sand Perfs 6711' - 6717'
 PBTD (ft) UNK
 TD (ft) 6761'

Gravel pack from 6761' - 6644' with 10 sk of cement on top by operator on initial PA

PROPOSED



Plug Placement

Cement surface plug from 251' to surface. Circulate 85 sx to surface. Top off as needed (5+ sx); cut off at 4' below-grade and weld on marker plate.

Set 70 sx cement balance plug at from 1200' to 1000'. Tag required.

Set 60 sx cement balance plug at from 1700' to 1530'. Tag required.

Set 60 sx cement balance plug at 4668' or refusal. Tag required at 4500' or higher.