



Multi Seal Integrity
 Shut-in and Bleed-off
 Indigo Complementary Logs
 Chorus (SNL) Acoustic Logs
 (1:240)

MAXIM ver 7.3.1.9035
Preliminary Log Report

Country:	United States
Company:	Chevron USA, Inc.
County:	Weld
Field:	Wattenberg
Well:	TREBOR B12-17
Well No. abbr:	TREBOR B12-17
Rig:	N/A
Unit Number:	N/A
Permanent Datum:	GL
Log Meas. From:	KB 10 ft
Northing:	N/A
Easting:	N/A
Date	October 20 th , 2022
Run	1
HUD G/C (ft)	N/A
Top Logged Interval (ft)	Surface
Bottom Logged Interval (ft)	1775.25
Type of Fluid	Water
Dens (ppg)	8.4
Time shut in	N/A
Tool	Indigo / Chorus
Engineer	Leonel Pirela
Witnessed	N/A
Prepared by	Andrey Yurchenko
Reviewed by	Maxim Volkov

This report was prepared by the Geoscience department of TGT at the request of the customer. The report is TGT's interpretation based on measurements, empirical relationships and assumptions, and on information provided by the customer, in respect of which there may be a number of possible interpretations and conclusions. All representations and warranties expressed or implied, in respect of this report are hereby excluded. TGT accepts no liability for any use which the customer may make of the information, recommendations or conclusions contained in this document or for any decisions which the customer may take as a result of this report.

Casing / Tubing Record					
Key	Size, in	Weight, lb/ft	Steel Grade	From, ft	To, ft
Casing	8 5/8	24.0	J-55	10.0	401.00
Casing	4 1/2	11.6	M-80	10.0	6999.00

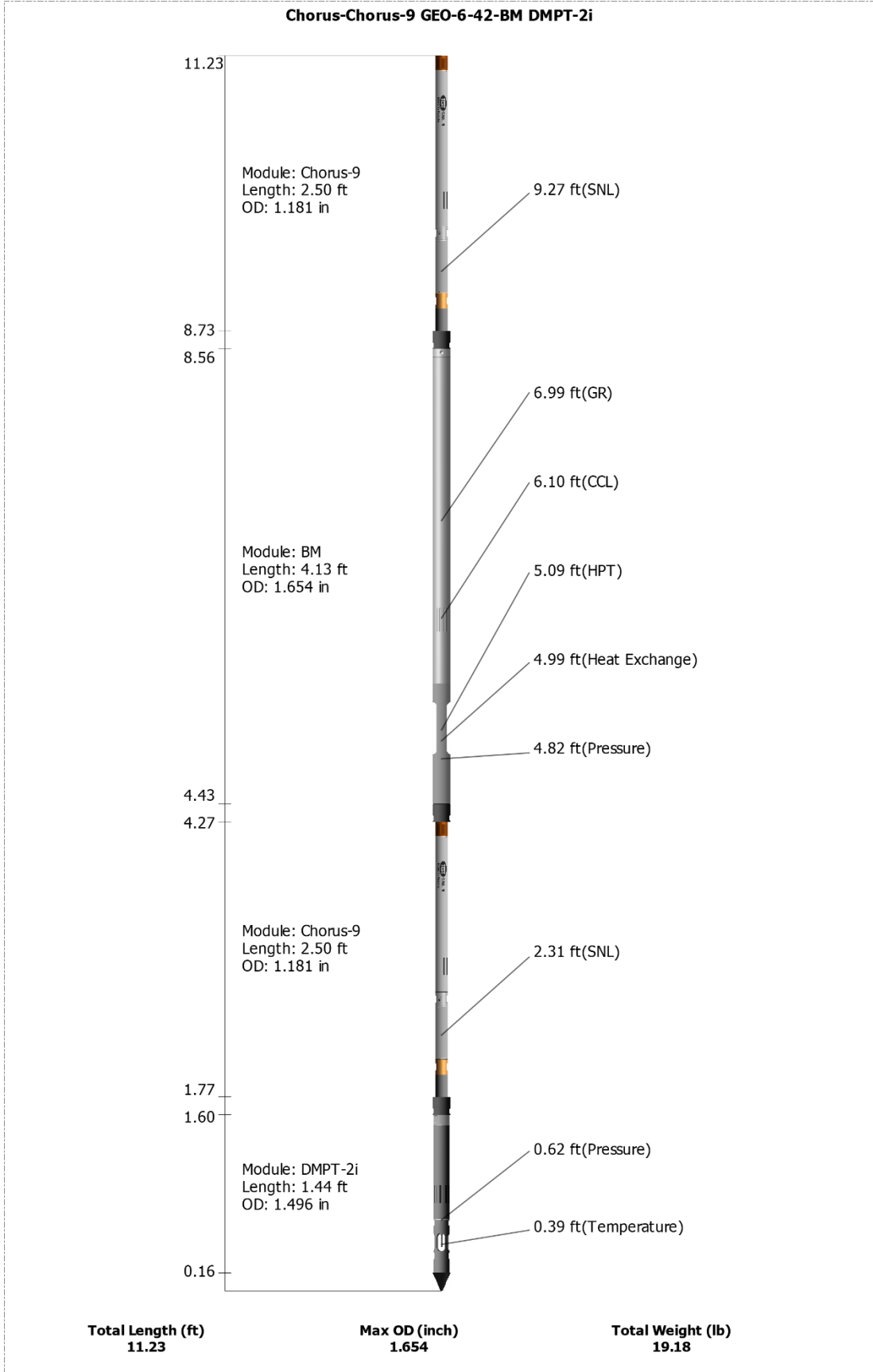
Comments

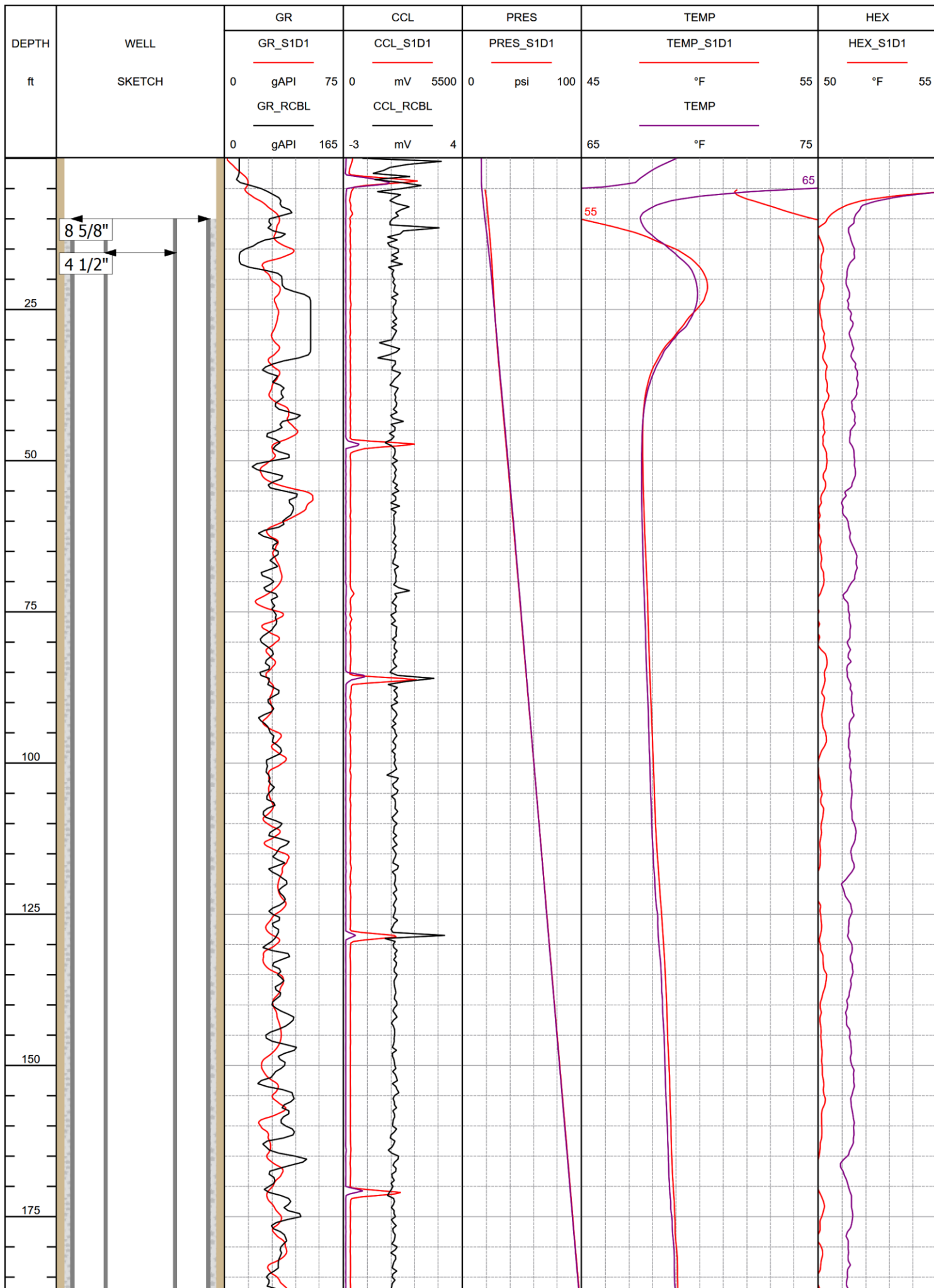
- GL refers to ground level.
- Data were correlated to RCBL GR/CCL survey dated October 19th, 2022.

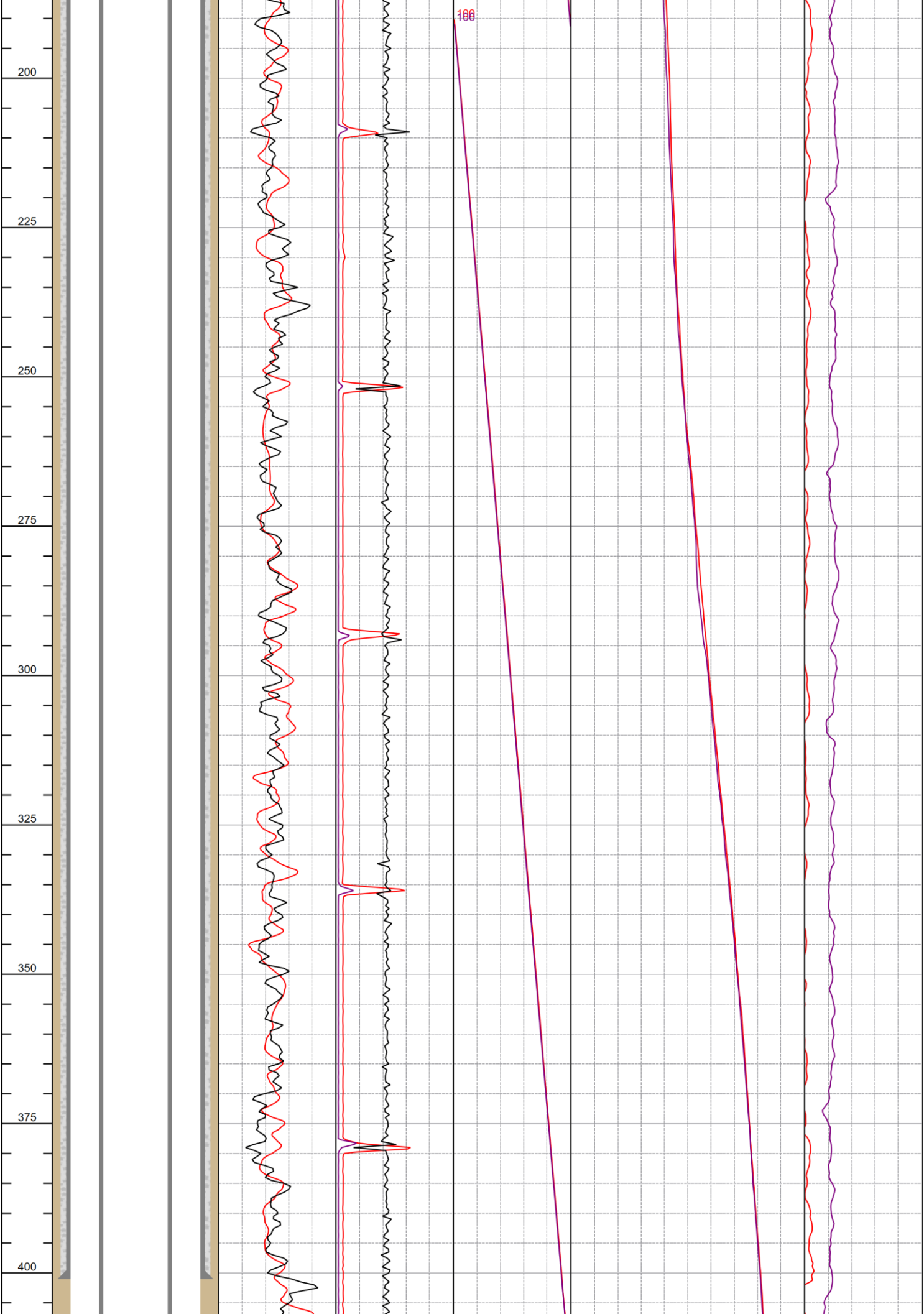


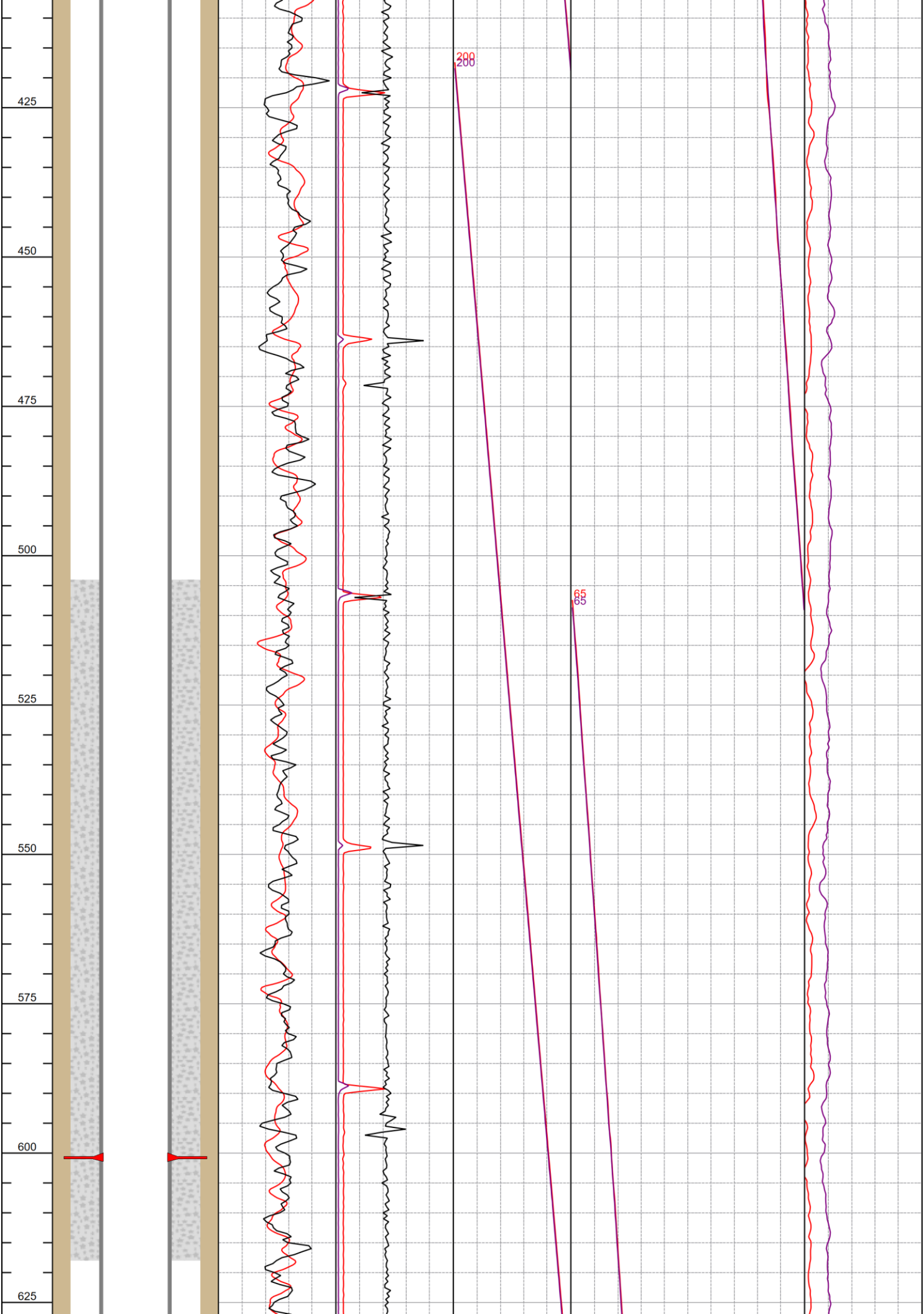
Sequence of Events

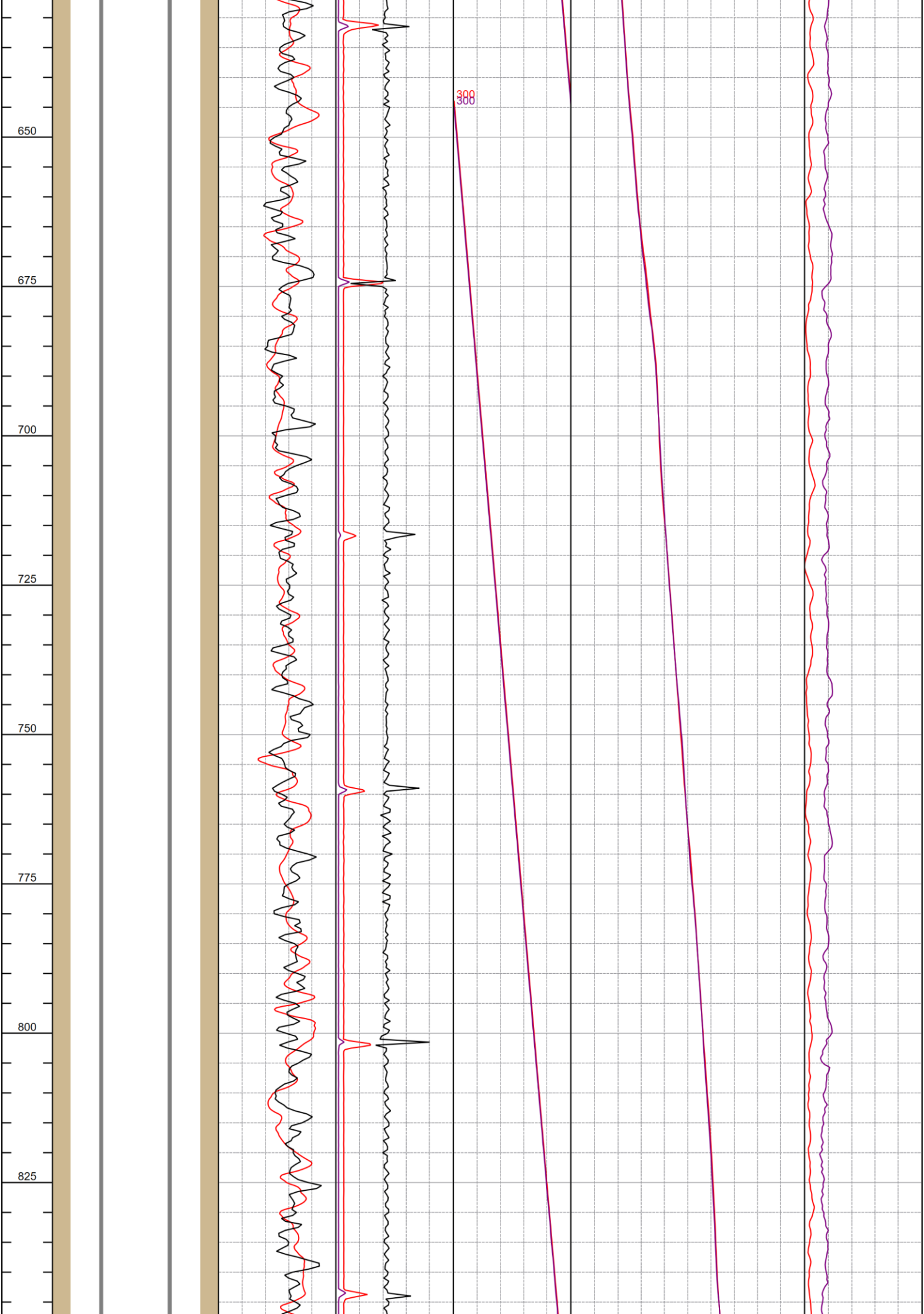
TIME	Start of interval	End of Interval	Logging speed	Las Name	EVENTS
Shut-in Pass					
07:15					Arrival to Location
07:30					Safety Meeting/ CoMan mentioned annulus bubbling-when the start work in well / 15 PSI - Casing level full (water) 14 PSI
07:45					Rig crew work on WH flange/ SL rigging up- head rebuild / tool programming.
08:20					GeoBM programming.
08:47			45 ft/min		RIH- Annulus pressure 15 PSI / casing Pressure 14 PSI.
08:51					Stop at 104' to restart depth system./ back up to surface to reserved.
08:55					Down Pass 15 PSI annulus press./ WHP- 14,67 PSI.
09:34					At 1774'
09:44					Logging up SNL Station
12:45					At surface/ annulus Press @ 17 PSI. WHP@ 14,67 PSI.
					4-1/2" annulus bleed off.
Bleed Off Pass					
12:47			45 ft/min		Down Pass
13:37					At 1774'
13:42			35 ft/min		U/P -SNL station
16:40					At surface/ annulus Press @ WHP@ 14,67 PSI.
					Download data.



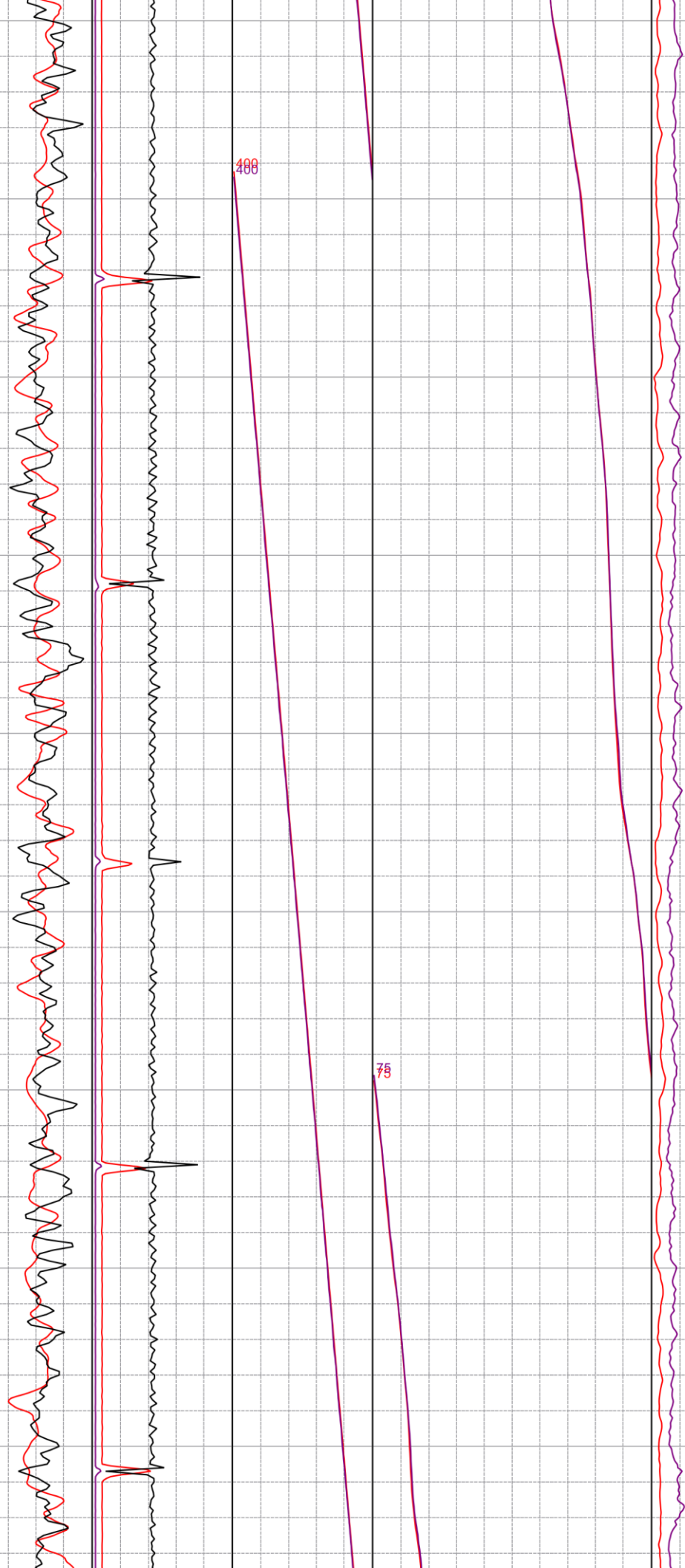


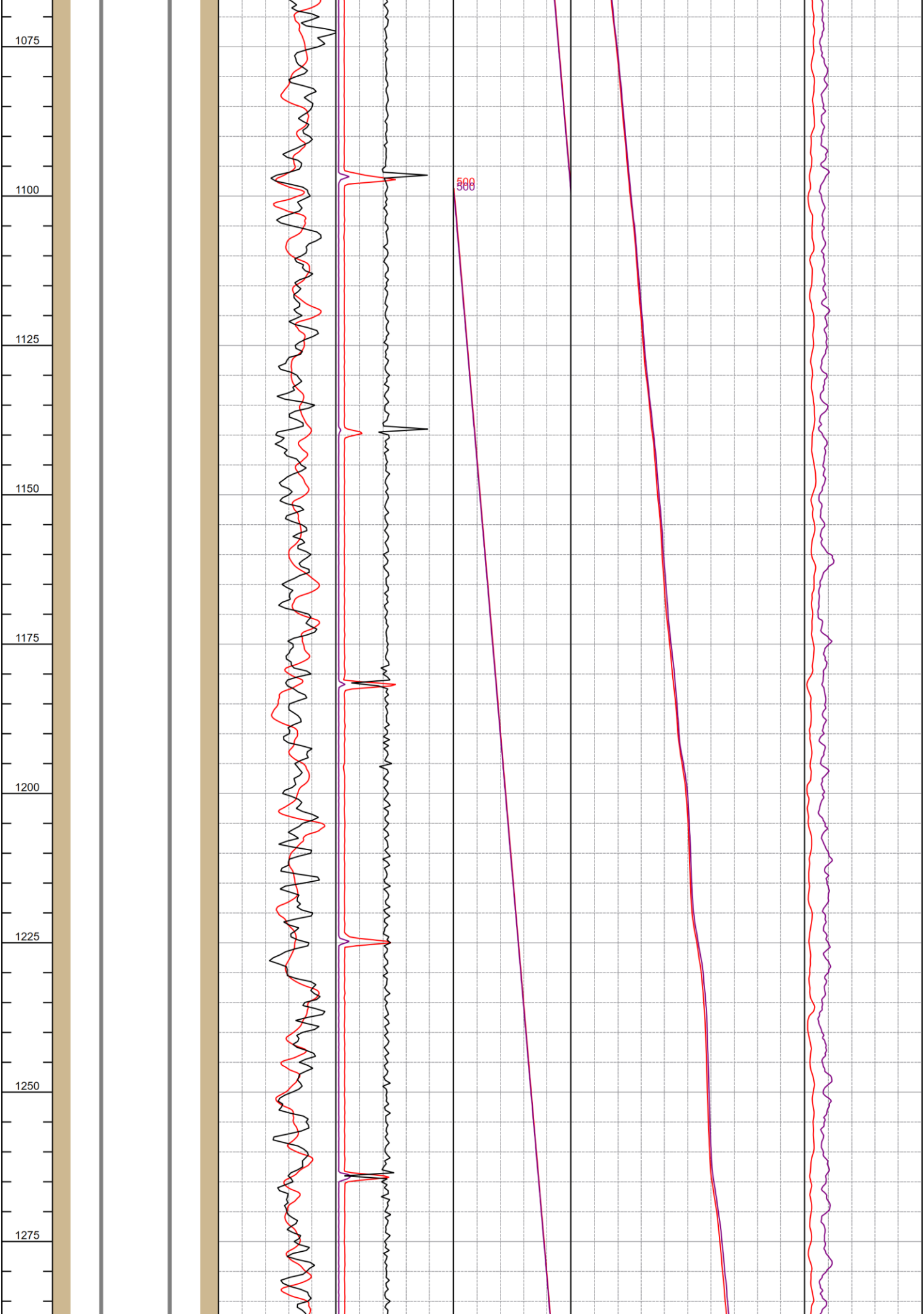


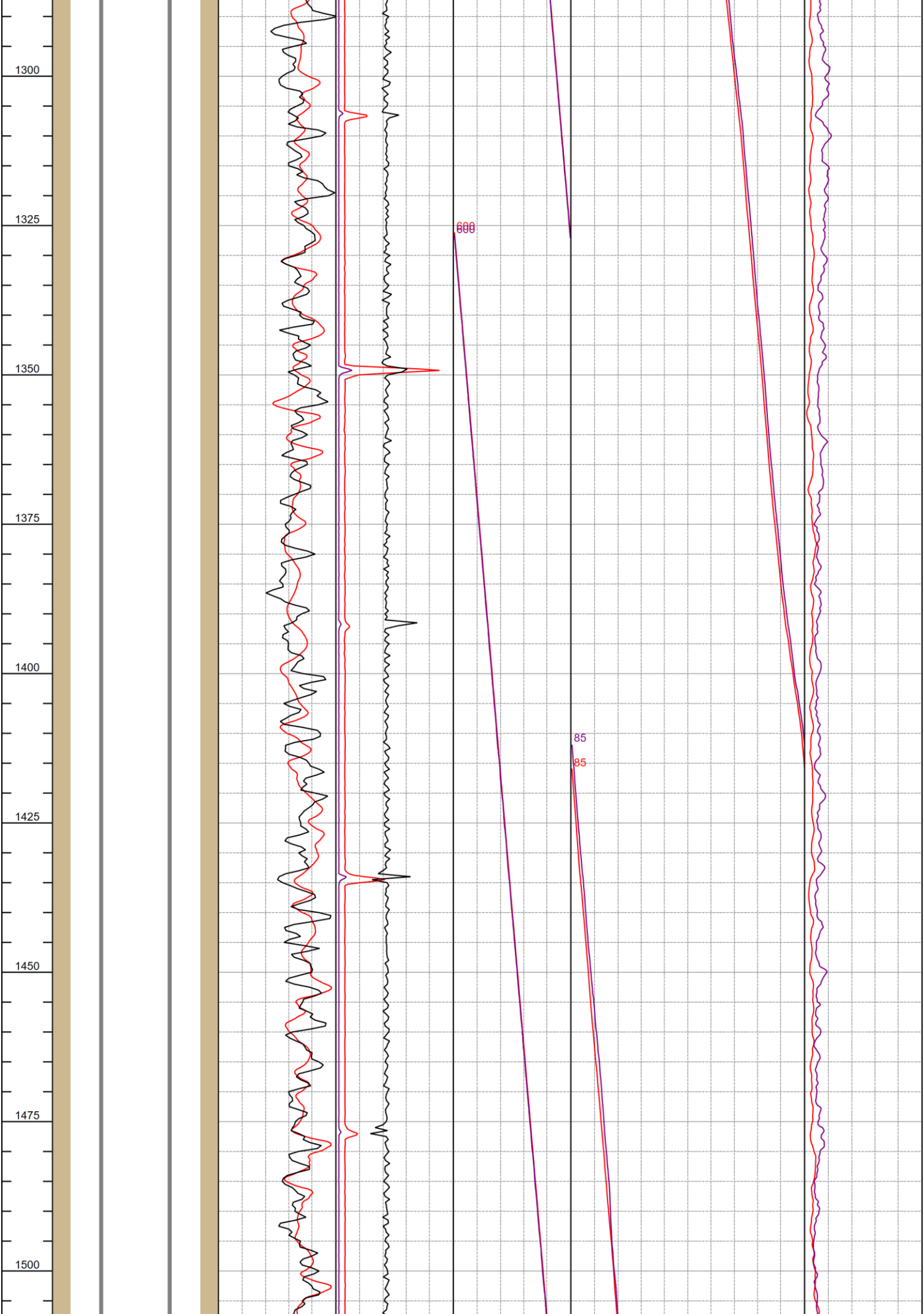


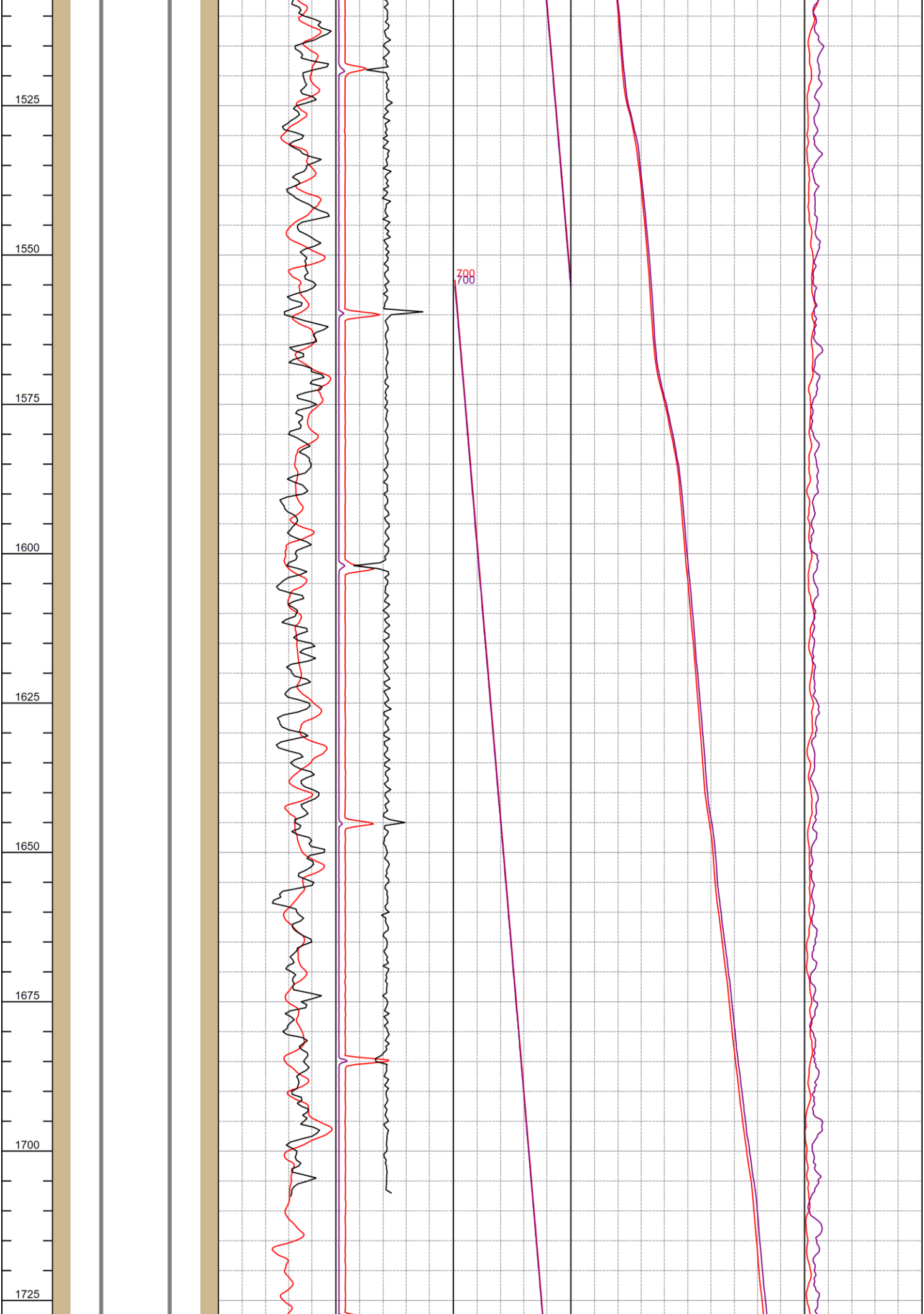


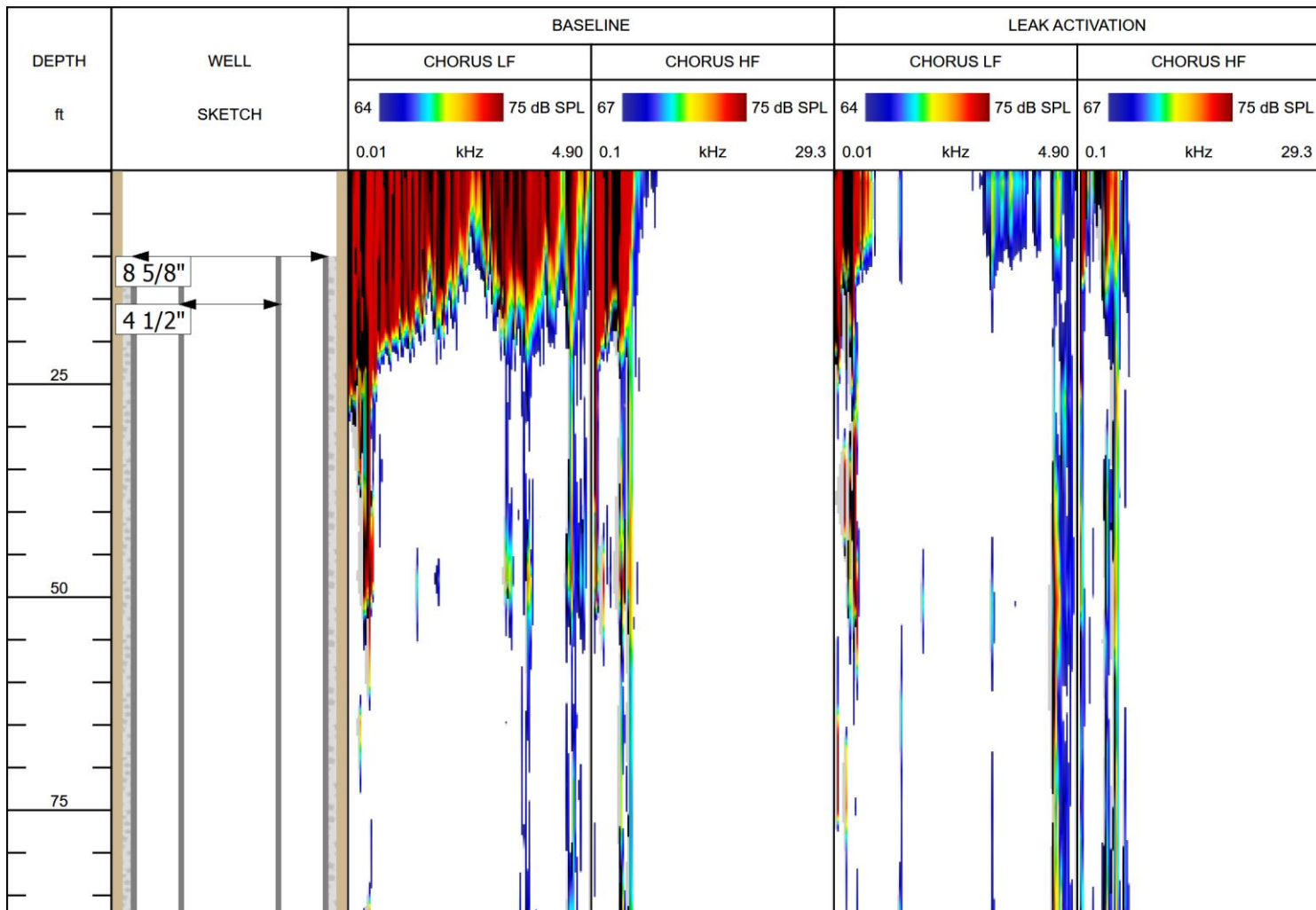
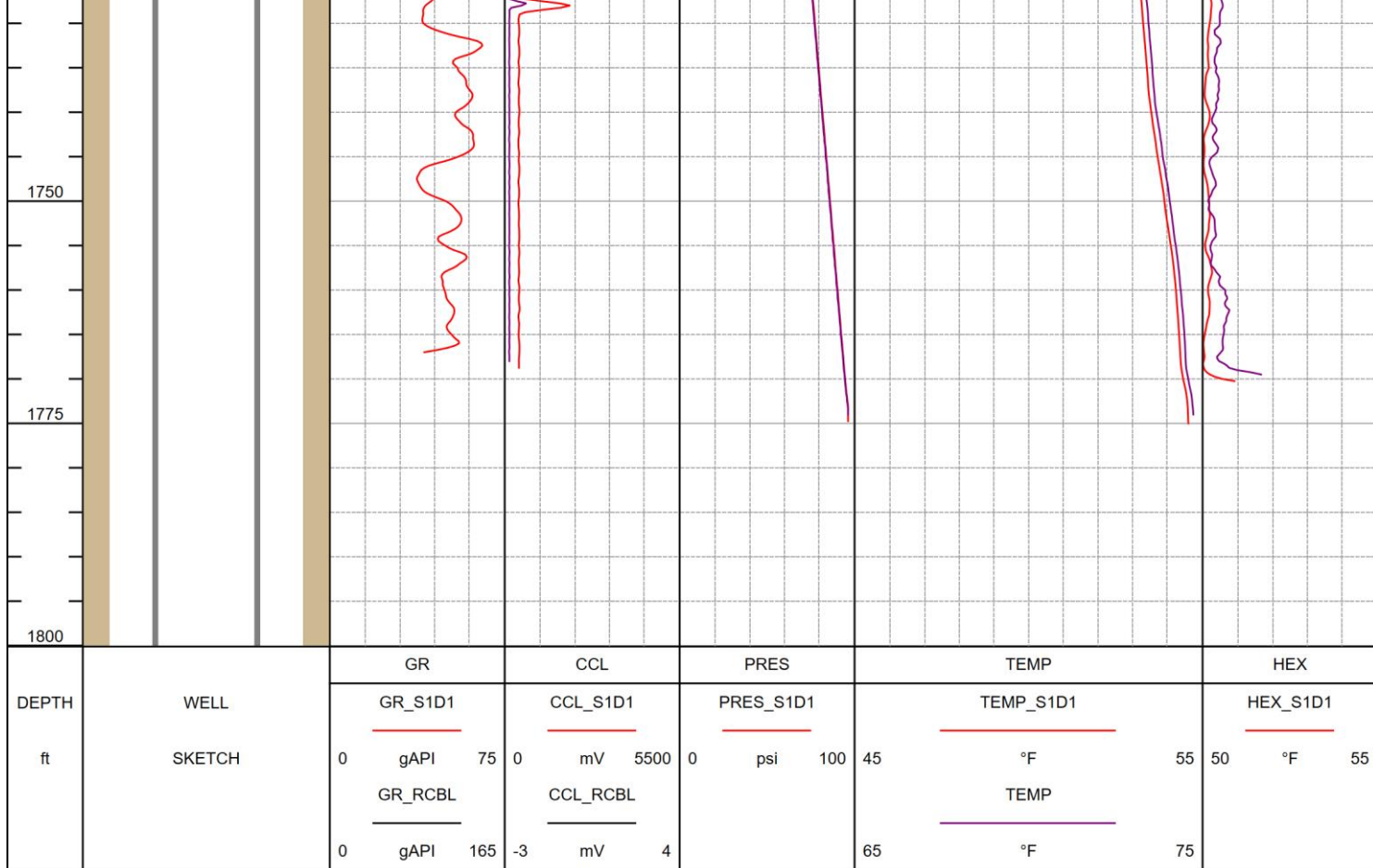
850
875
900
925
950
975
1000
1025
1050

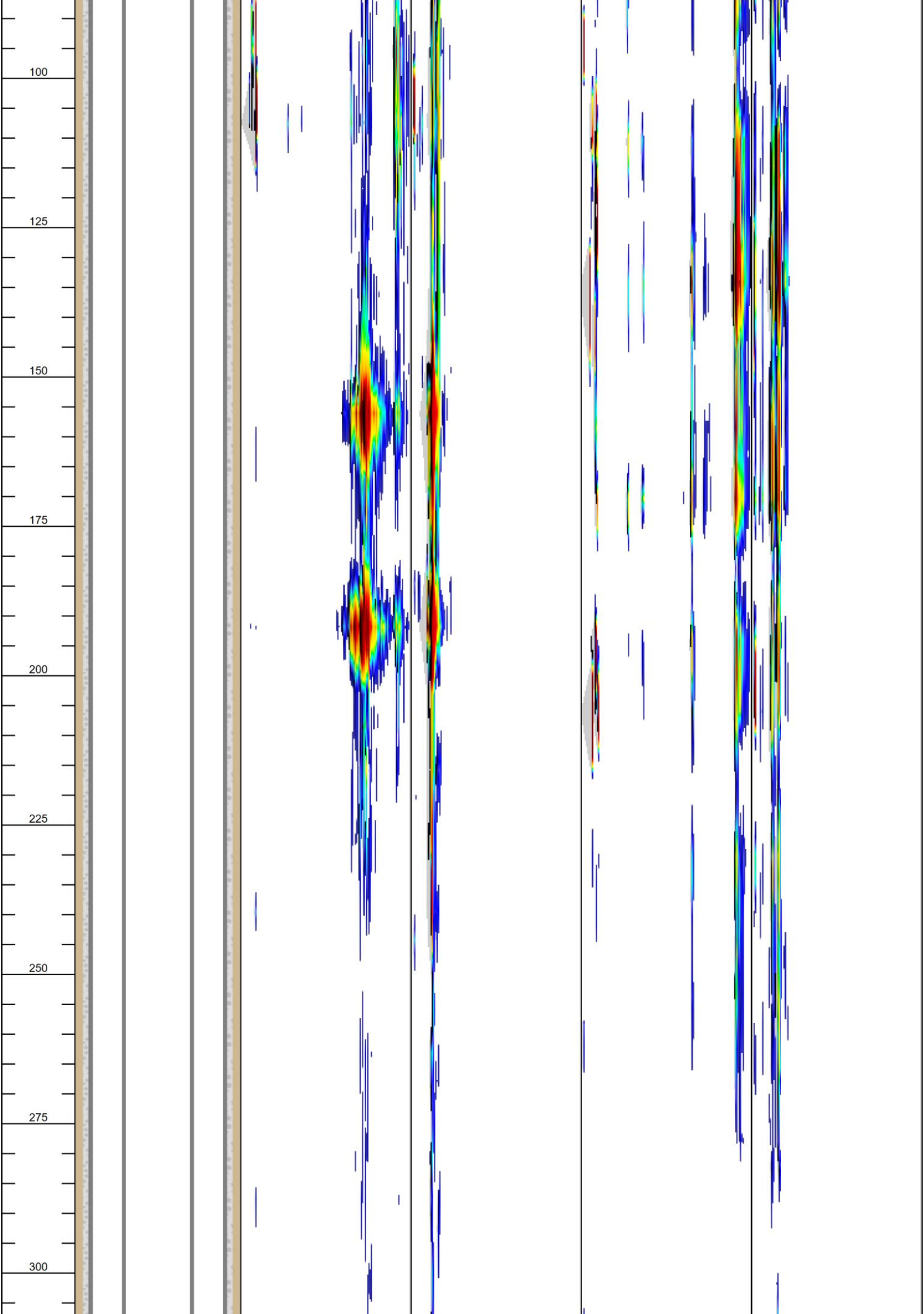


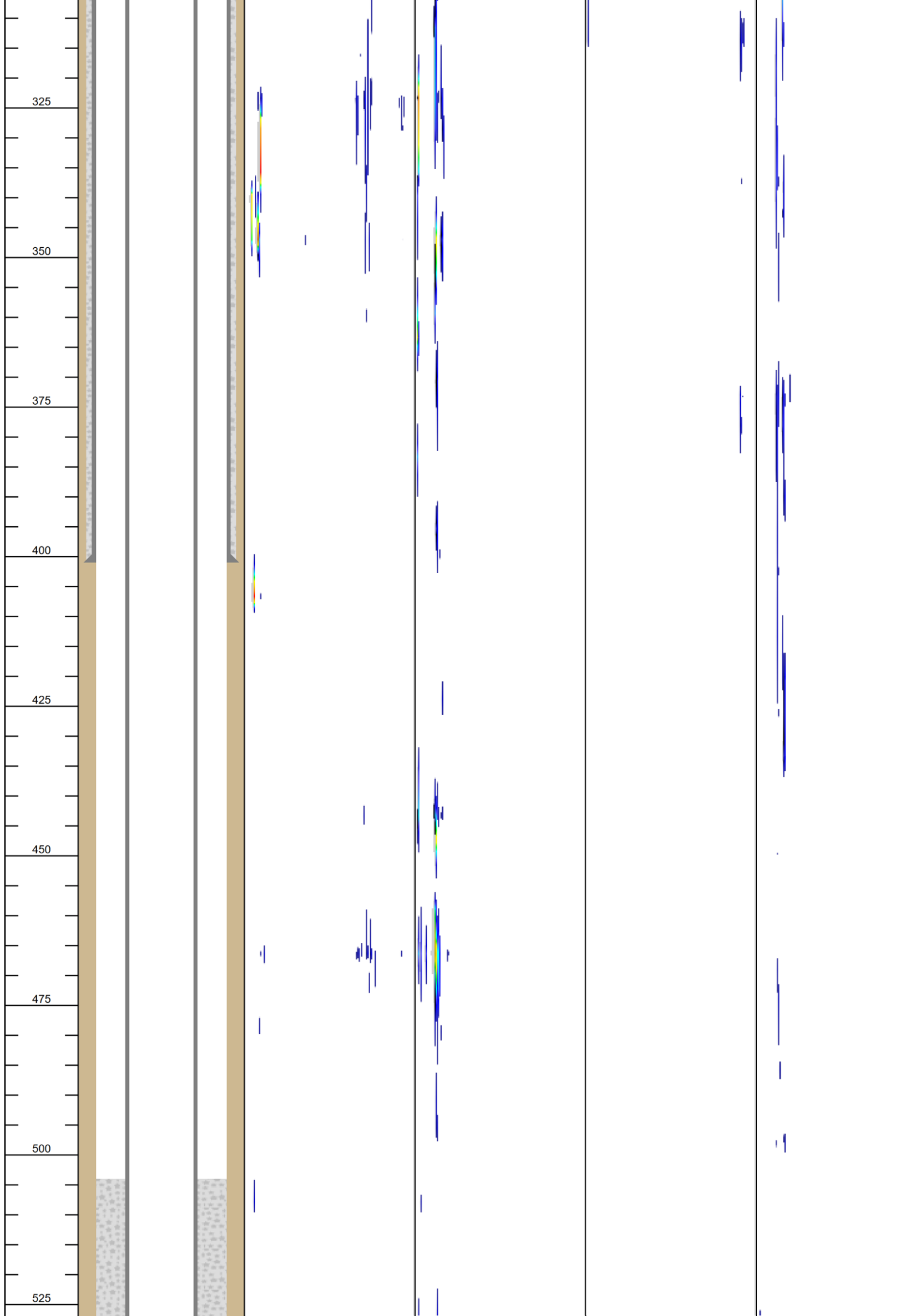


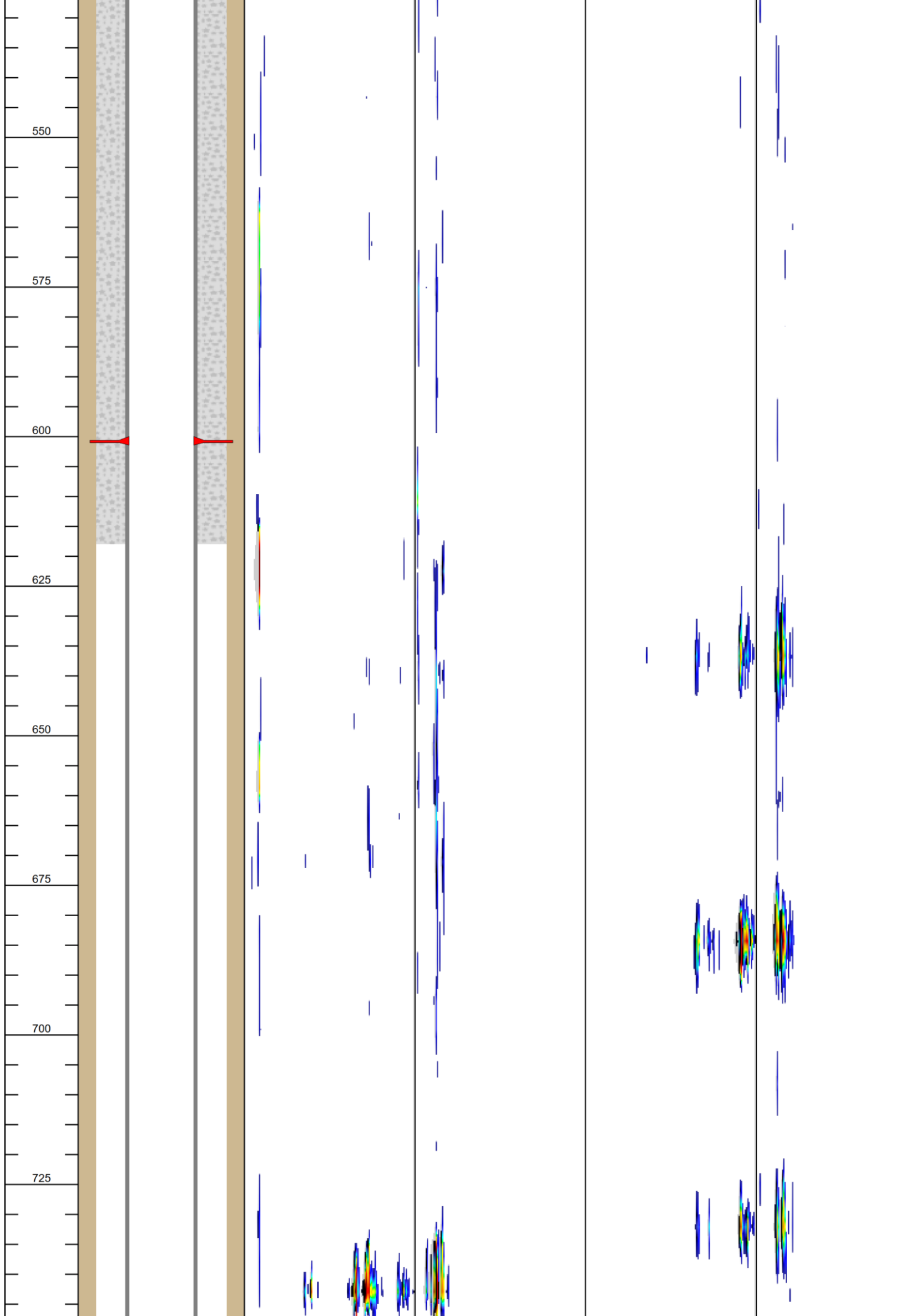


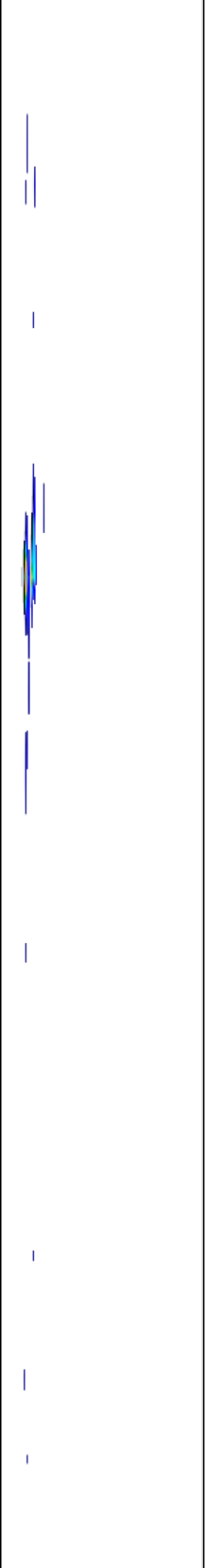
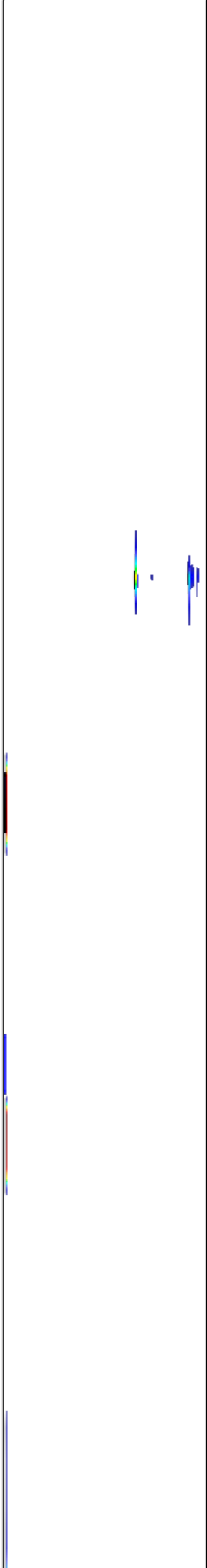
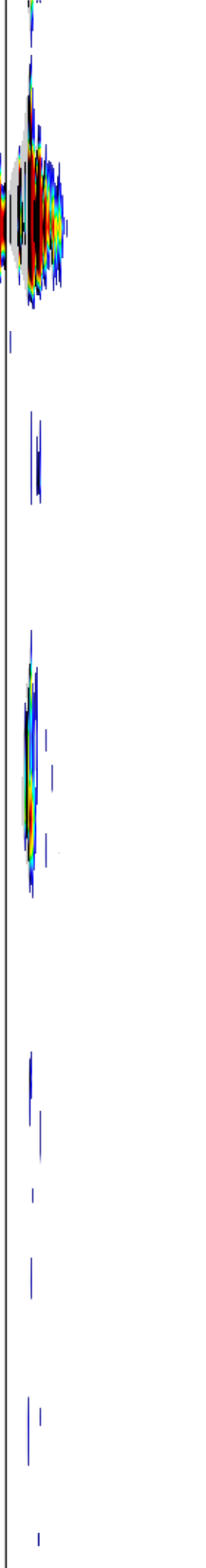
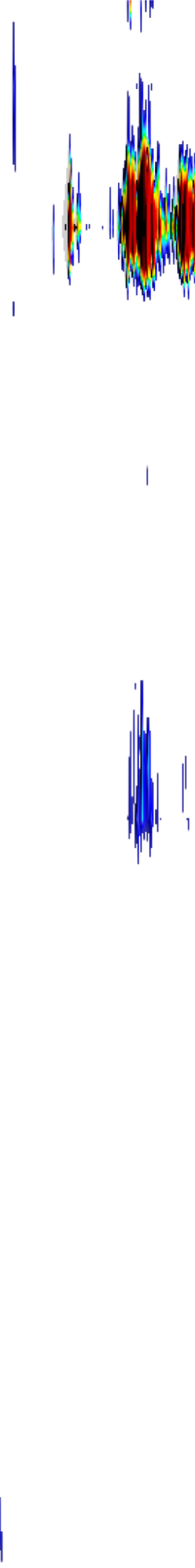


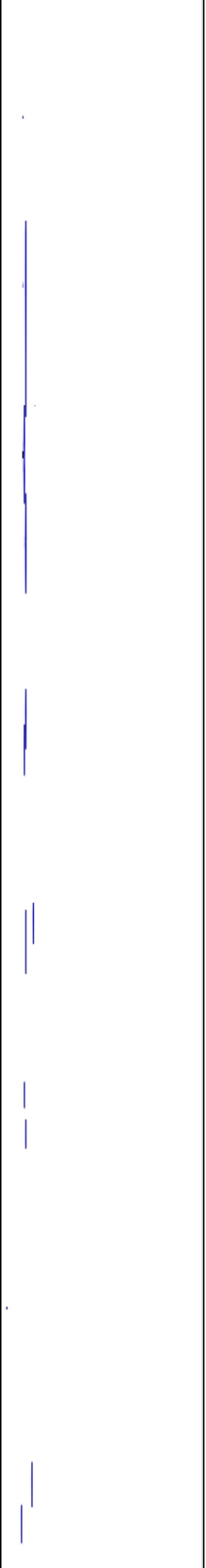
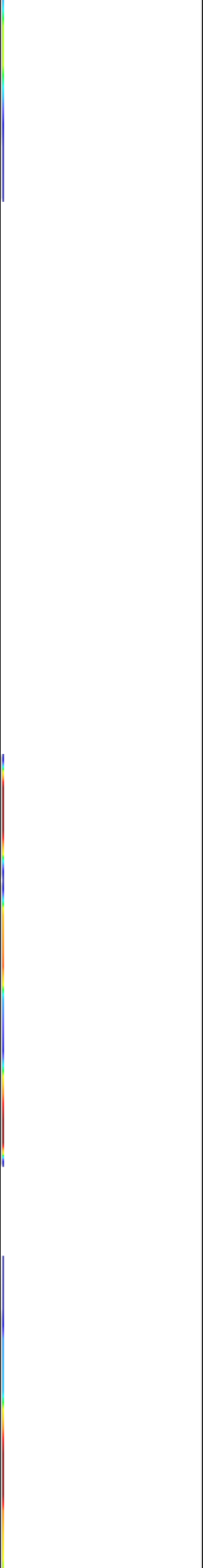
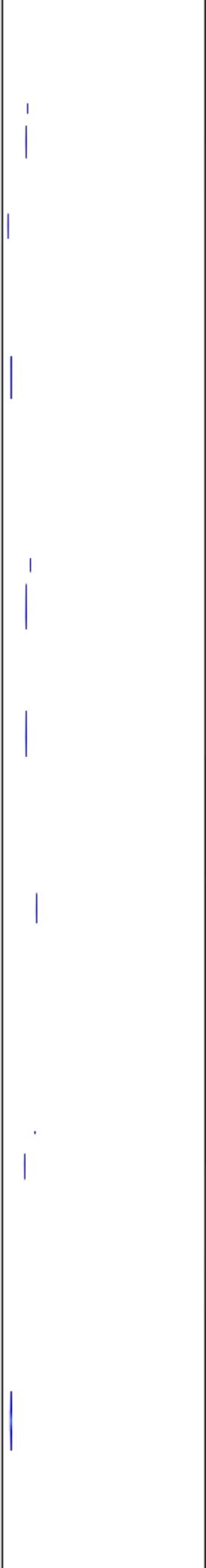
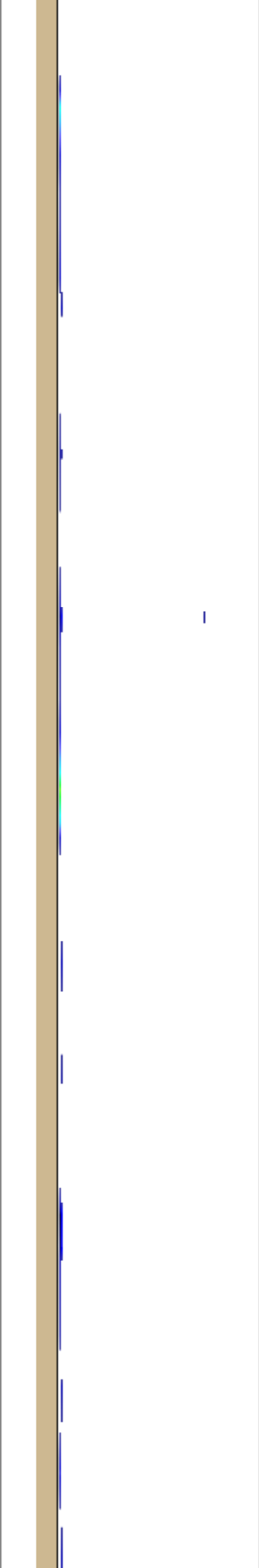
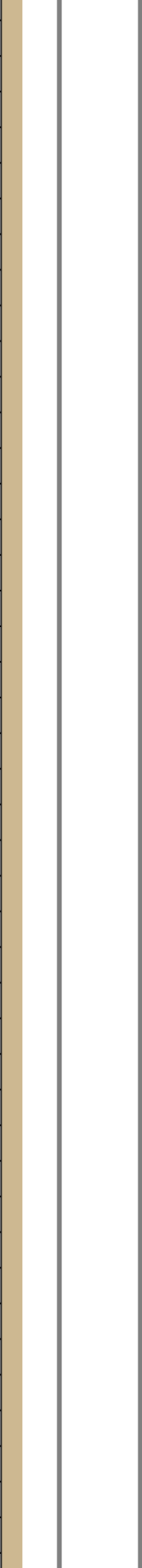
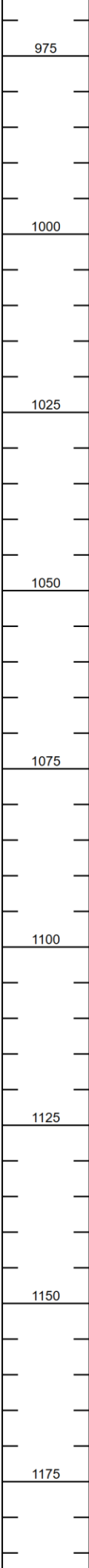


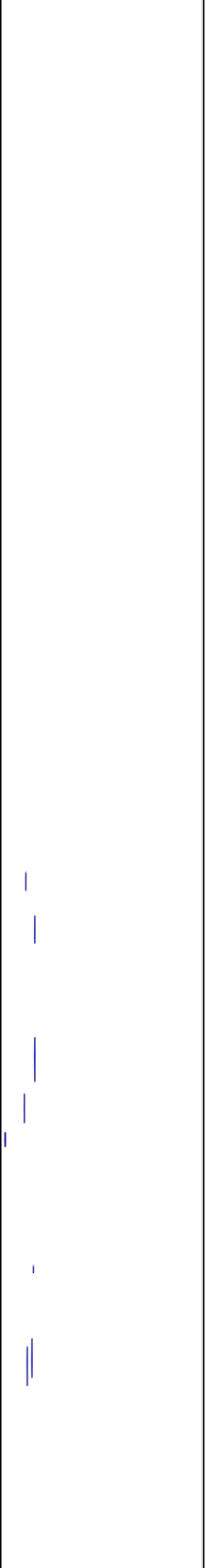
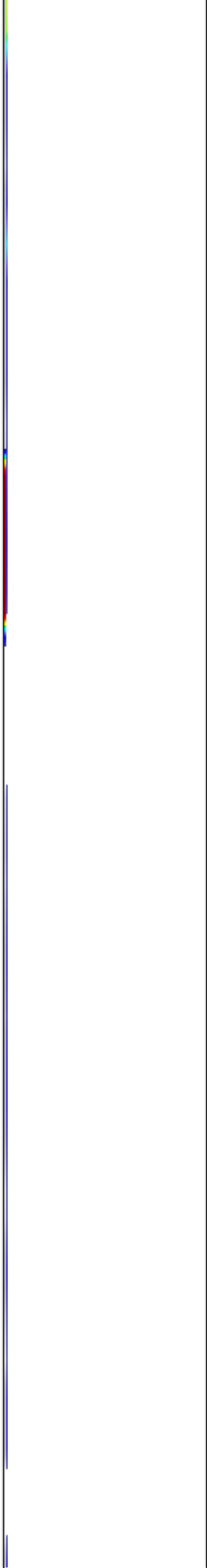
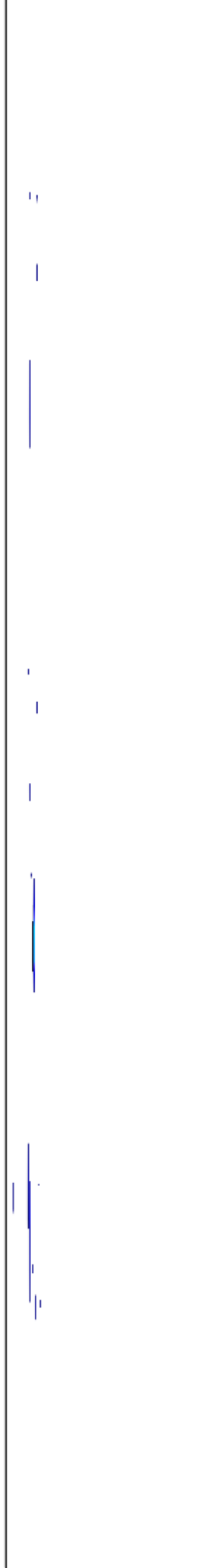
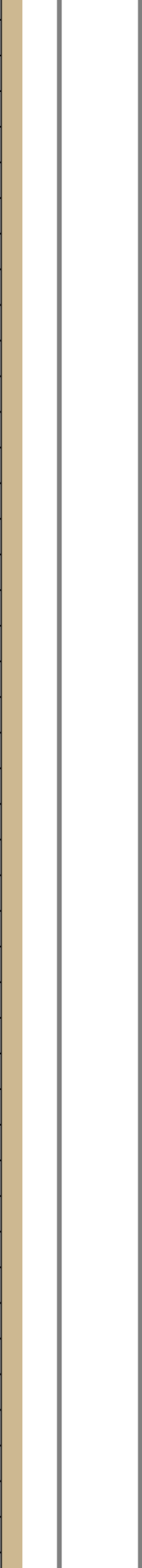
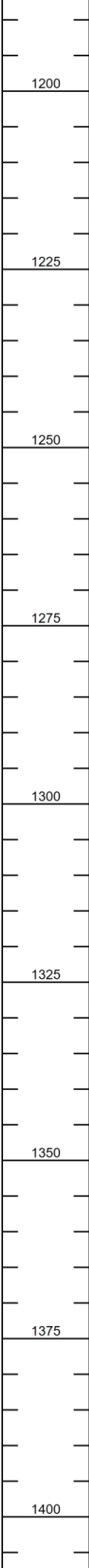


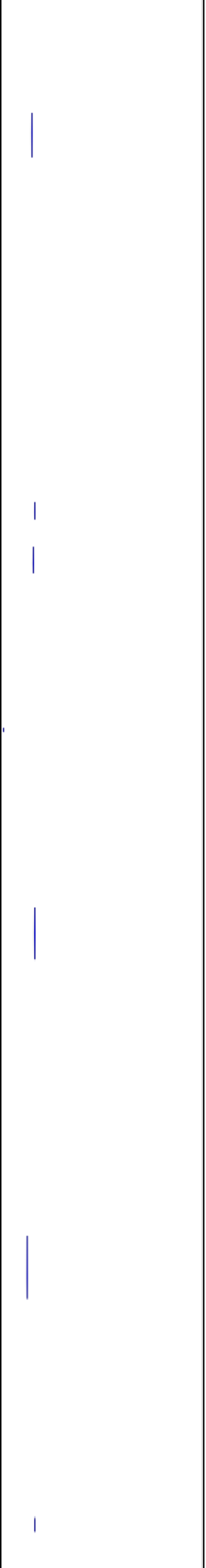
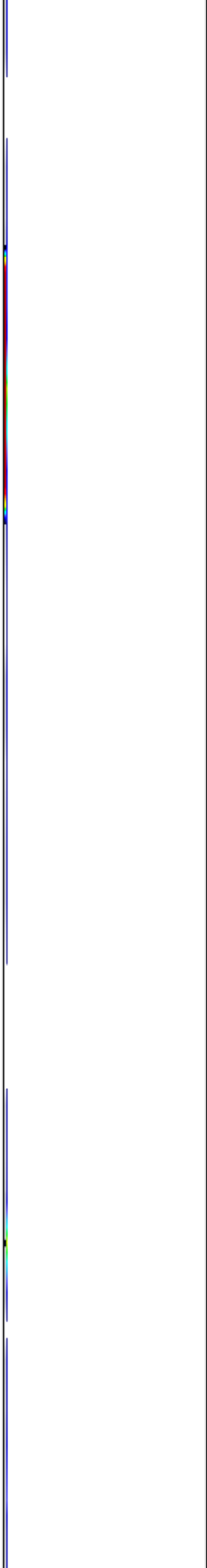
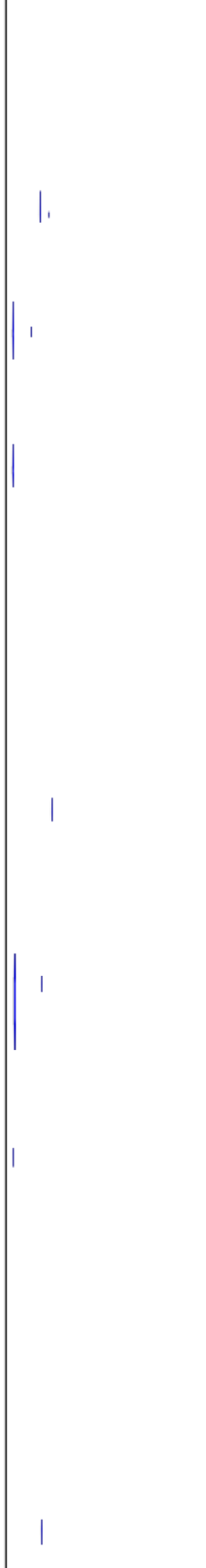
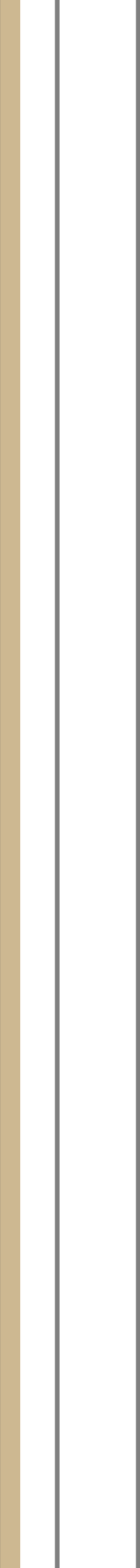
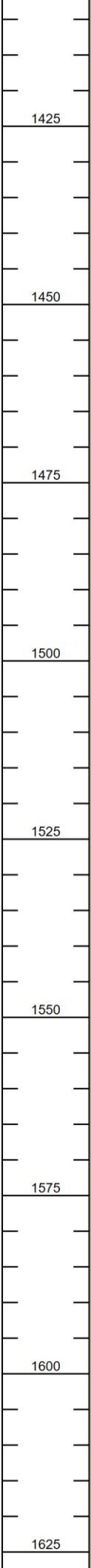


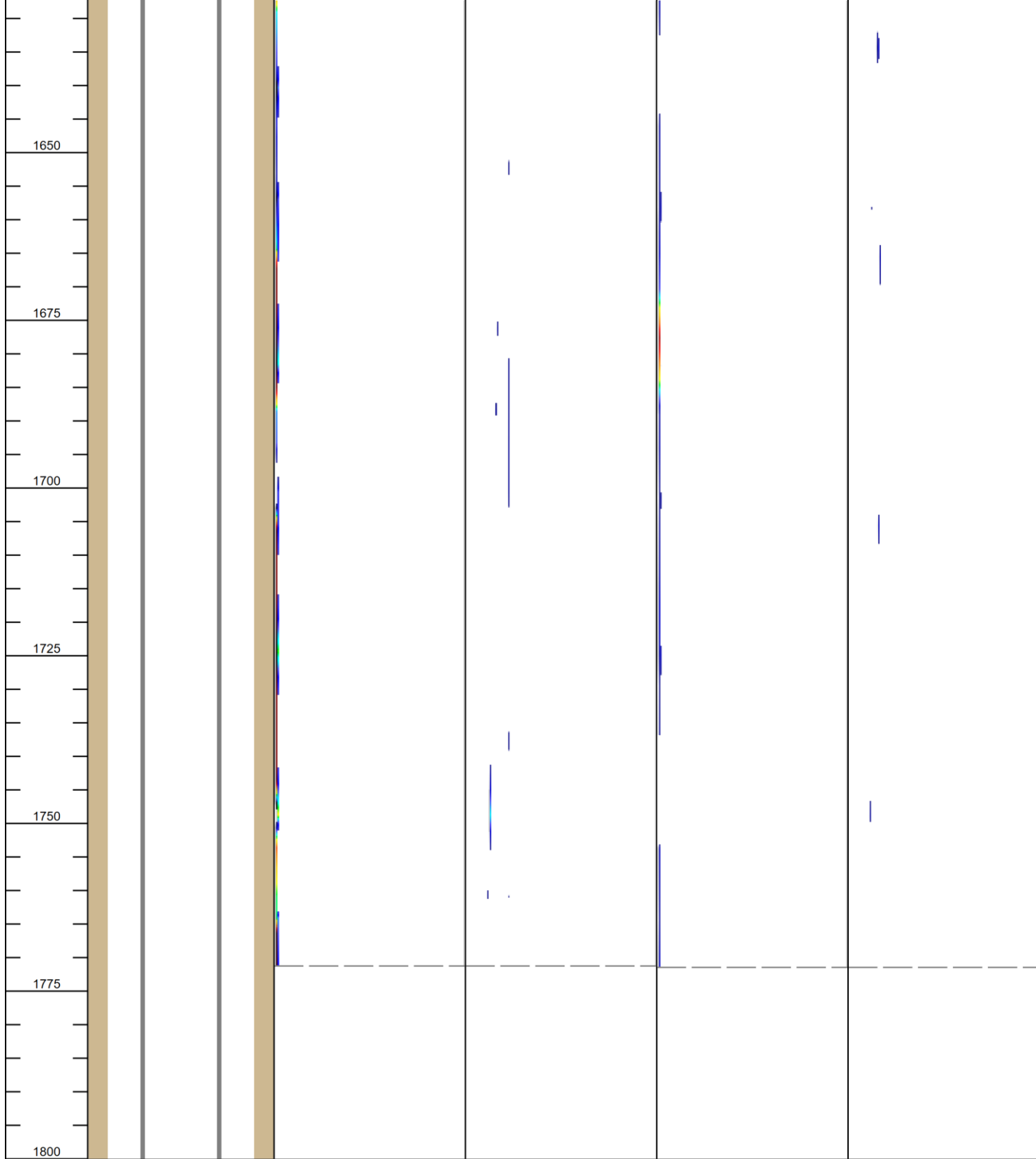












DEPTH ft	WELL SKETCH	BASELINE		LEAK ACTIVATION	
		CHORUS LF	CHORUS HF	CHORUS LF	CHORUS HF
		64 75 dB SPL 0.01 kHz 4.90	67 75 dB SPL 0.1 kHz 29.3	64 75 dB SPL 0.01 kHz 4.90	67 75 dB SPL 0.1 kHz 29.3



Multi Seal Integrity

Name	Value	Description
CCL	mV	Casing Collar Locator
GR_RCBL	gAPI	Gamma Ray (RBL dated 6 th October 2022)
PRES	psia	Borehole Pressure
TEMP	°F	Temperature
HEX	°F	Heat Exchange
Chorus (LF, HF)	dB, kHz	Spectral Noise Log
S1D1		Indigo down pass during shut-in
B1D1		Indigo down pass during bleed-off

Preliminary Log Report

Company	Chevron USA, Inc.
Well	TREBOR B12-17
Field	Wattenberg
County	Weld