



**RADIAL BOND TOOL  
GAMMA RAY  
CCL**

Company CHEVRON  
Well TREBOR B12-17  
Field WATTENBERG  
County WELD  
State CO  
Country USA

Company CHEVRON  
Well TREBOR B12-17  
Field WATTENBERG  
County WELD  
State CO  
Country USA

Location: API #: 05-123-22159  
NWNNE  
LAT. 40.25508 LONG. -104.293709  
SEC 12 TWP 5N RGE 64W  
Permanent Datum GL Elevation NA  
Log Measured From KB 10'  
Drilling Measured From KB  
Other Services  
Elevation  
K.B.  
D.F.  
G.L.

Date 10-19-2022  
Run Number ONE  
Depth Driller 6888'  
Depth Logger 1710'  
Bottom Logged Interval 1706'  
Top Log Interval SURFACE  
Open Hole Size 8.625"  
Type Fluid WATER  
Density / Viscosity NA  
Max. Recorded Temp. 105 °F  
Estimated Cement Top  
Time Well Ready ON ARRIVAL  
Time Logger on Bottom NA  
Equipment Number 3813  
Location GREELEY, CO  
Recorded By J. KERR  
Witnessed By D. POWELL

Borehole Record				Tubing Record			
Run Number	Bit	From	To	Size	Weight	From	To


Casing Record  
Surface String 8.625" Size Vg/ft 24# Top SURFACE Bottom 401'  
Prot. String  
Production String 4.5" 11.6# SURFACE 6888'  
Liner

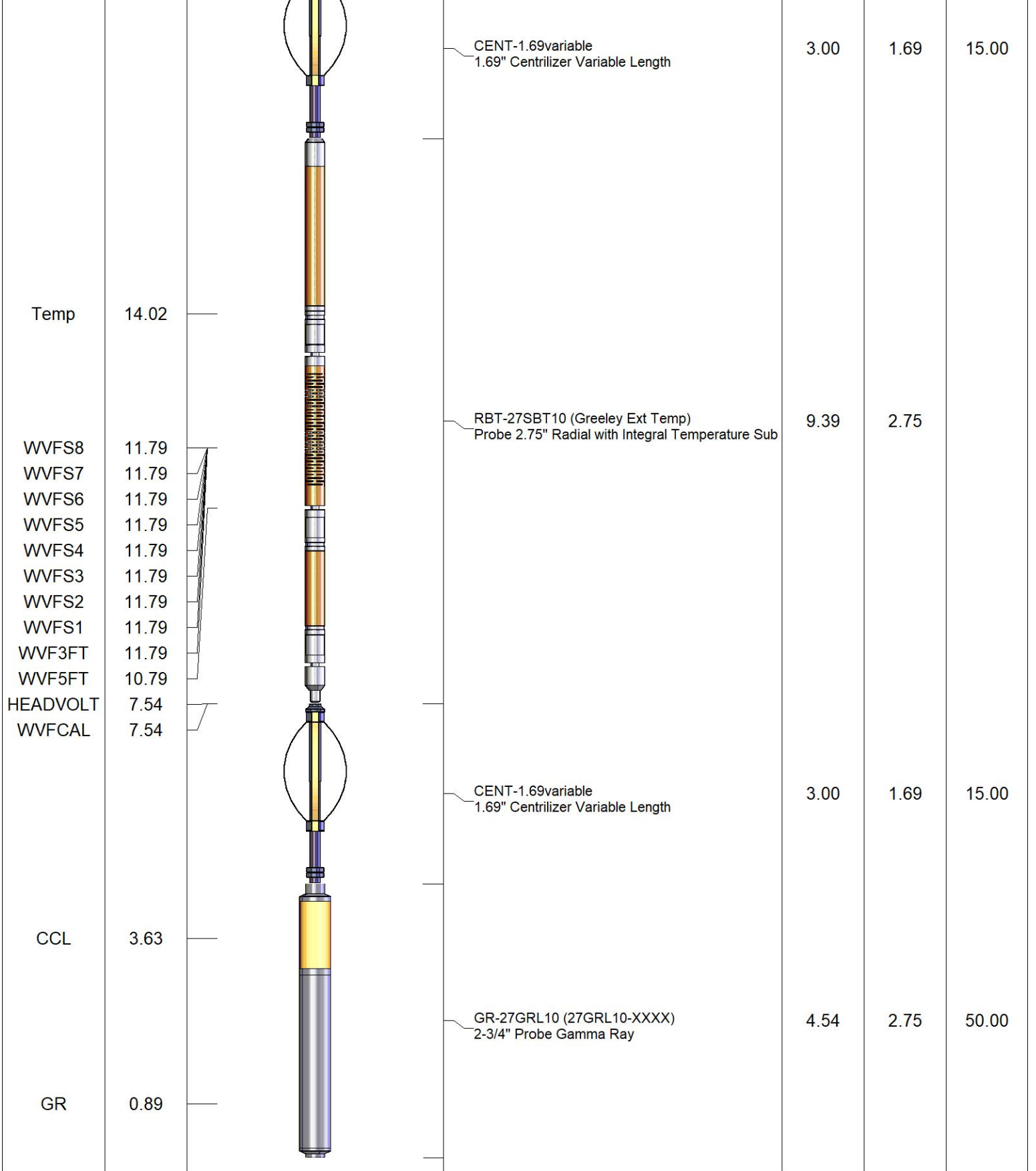
<<< Fold Here >>>

All interpretations are opinions based on inferences from electrical or other measurements and we cannot and do not guarantee the accuracy or correctness of any interpretation, and we shall not, except in the case of gross or willful negligence on our part, be liable or responsible for any loss, costs, damages, or expenses incurred or sustained by anyone resulting from any interpretation made by any of our officers, agents or employees. These interpretations are also subject to our general terms and conditions set out in our current Price Schedule.

**Comments**

**RAN CBL TO VERIFY CEMENT BOND  
WELL LOADED UPON ARRIVAL**

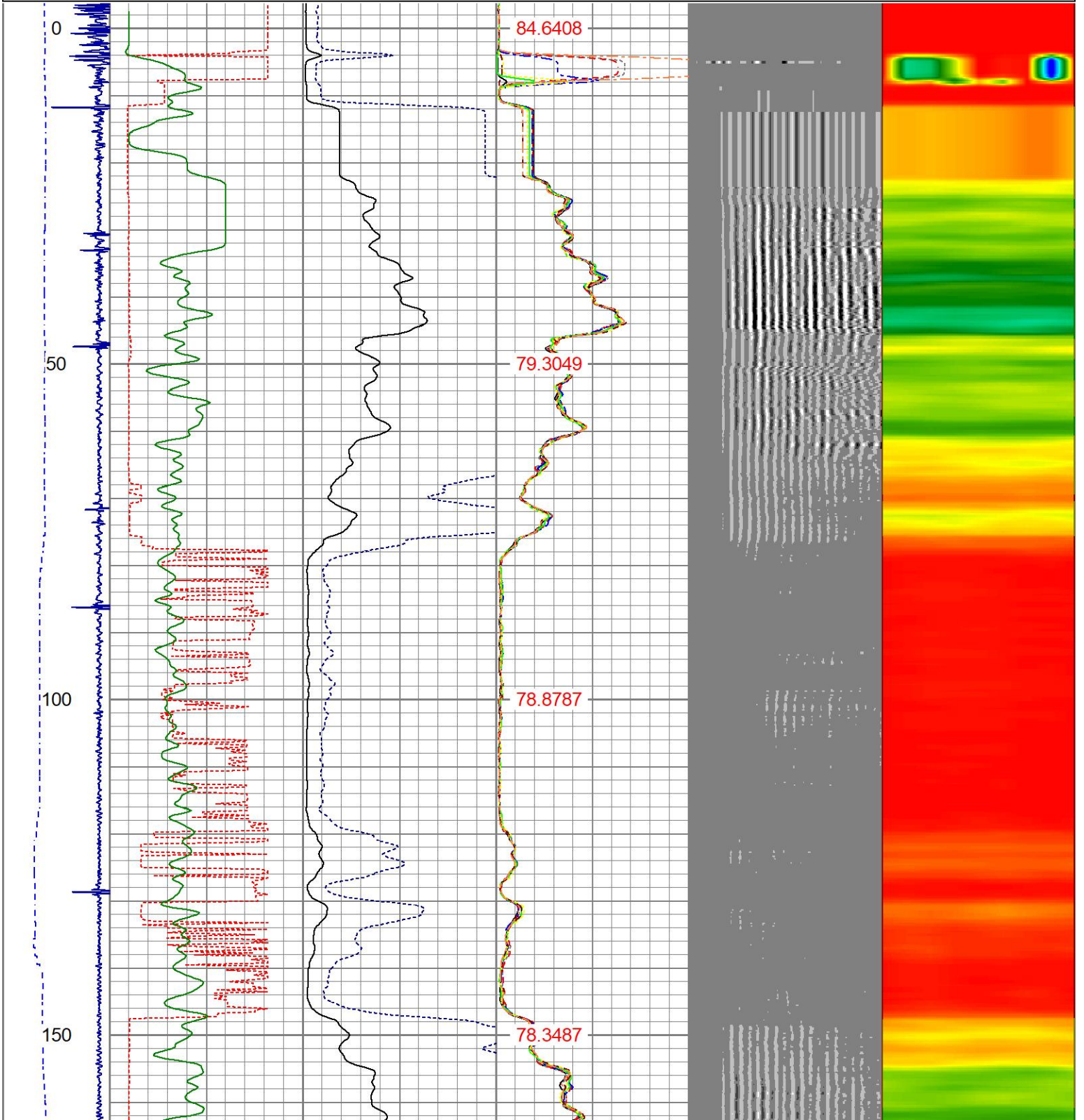
Sensor	Offset (ft)	Schematic	Description	Length (ft)	O.D. (in)	Weight (lb)
			CHD-1_11/16_Cablehead 1 11/16 Cablehead	1.00	1.68	5.00

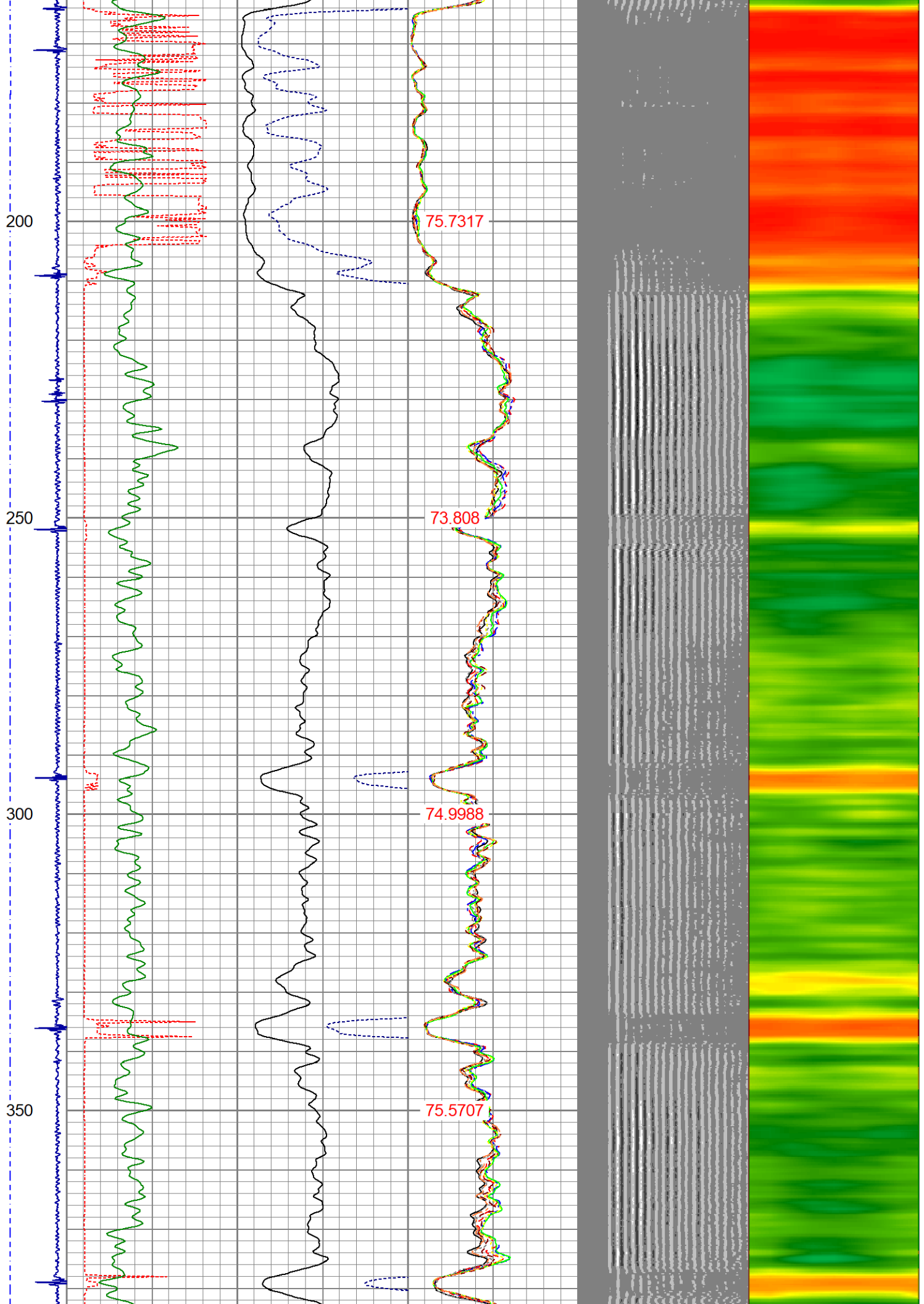


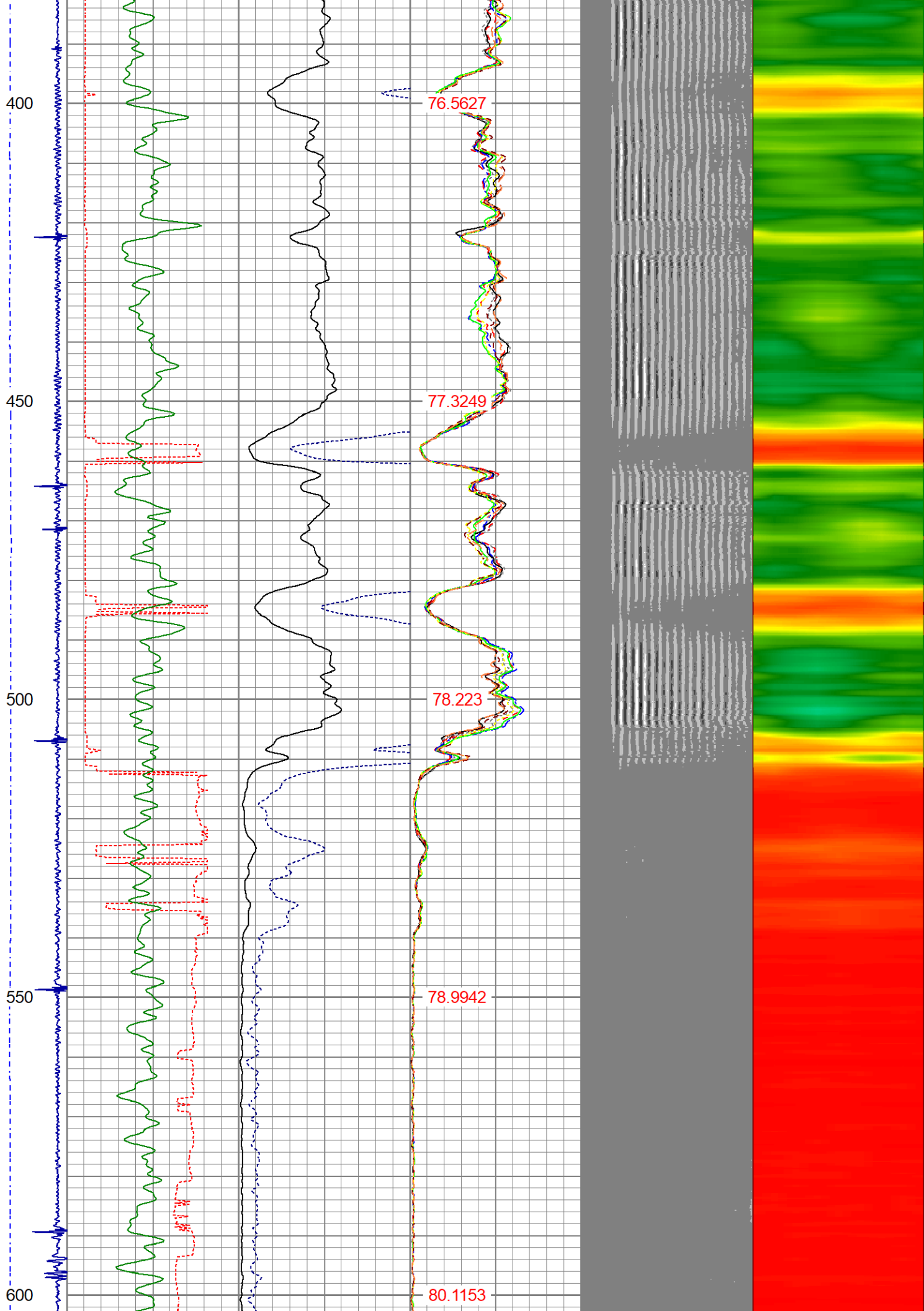
Dataset: trebor b 12-17.db: field/well/run1/pass7  
 Total length: 20.93 ft  
 Total weight: 85.00 lb  
 O.D.: 2.75 in

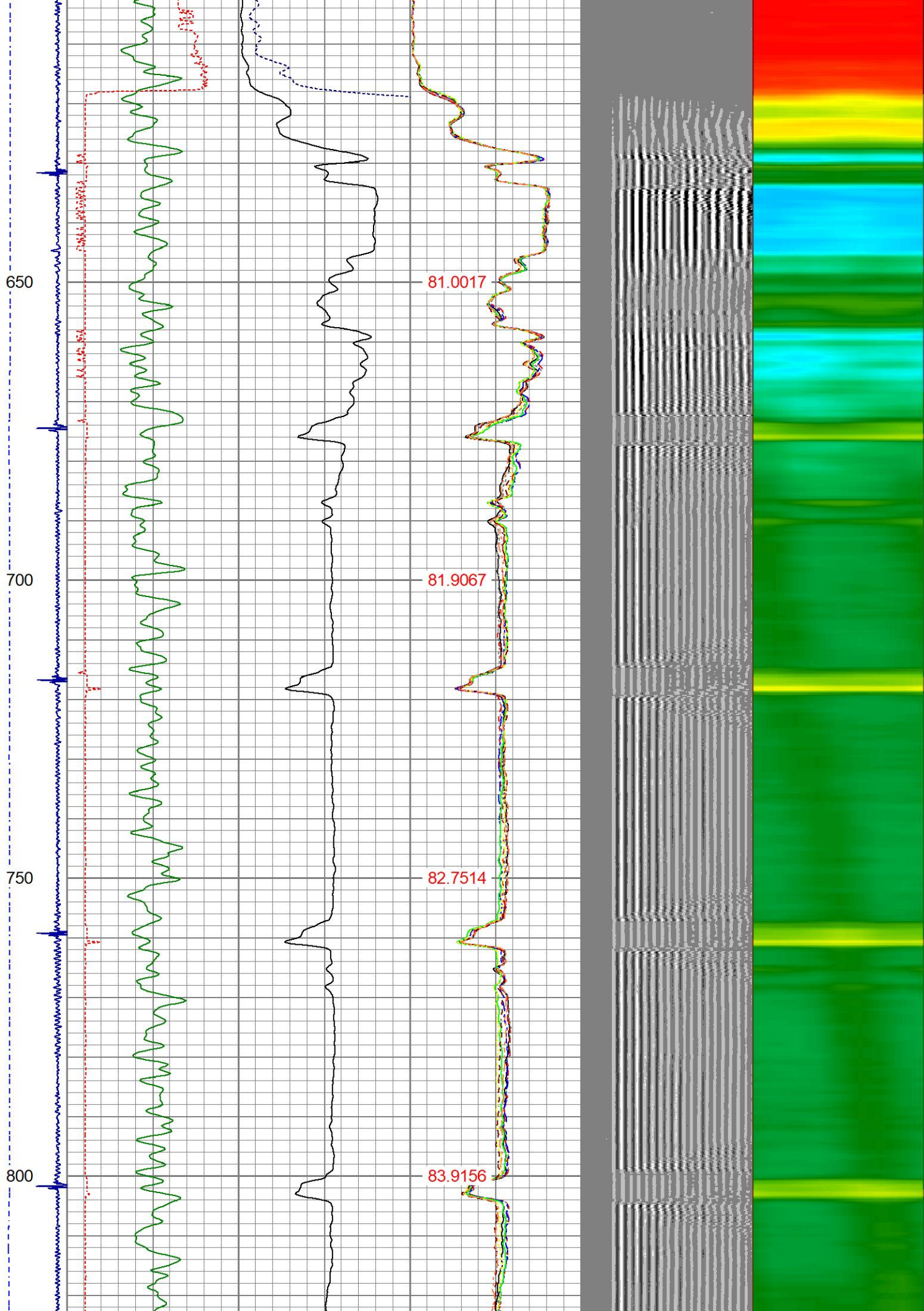
Database File: trebor b 12-17.db  
 Dataset Pathname: pass7  
 Presentation Format: ips\_rbtcolor  
 Dataset Creation: Wed Oct 19 16:23:08 2022  
 Charted by: Depth in Feet scaled 1:240

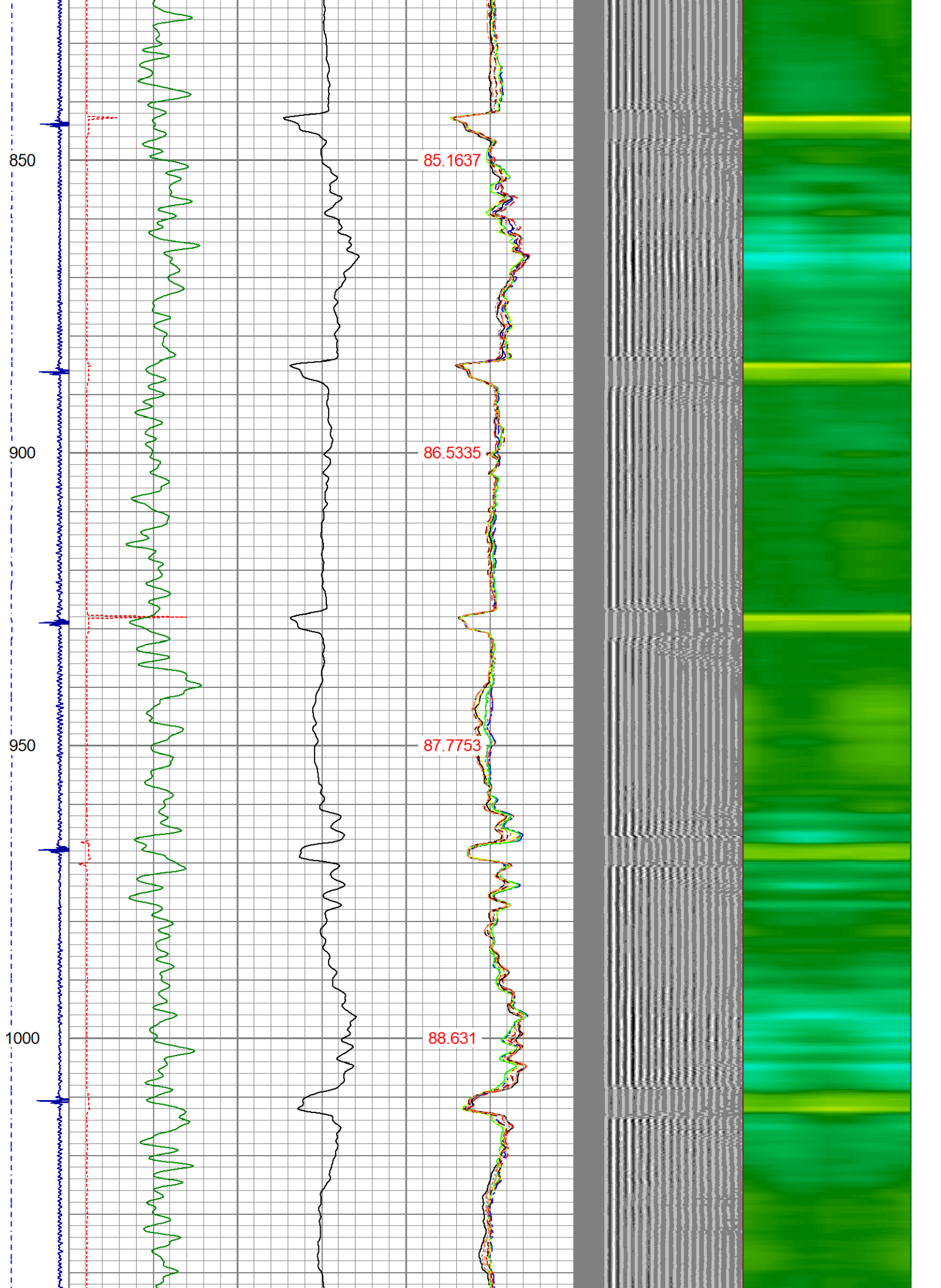
-9	CCL	1	200	TT (usec)	1000	0	AMP (mV)	100	0	AMPS1	100	200	VDL (usec)	1200	1	Cement Map	8	
	LSPD		0	GR (GAPI)	200	0	AMPx5 (mV)	20	0	AMPS2	100							
	(ft/min)		200	GR (GAPI)	400				0	AMPS3	100							
0		250							0	AMPS4	100							
									0	AMPS5	100							
									0	AMPS6	100							
									0	AMPS7	100							
									0	AMPS8	100							
										TEMP								
										(degF)								

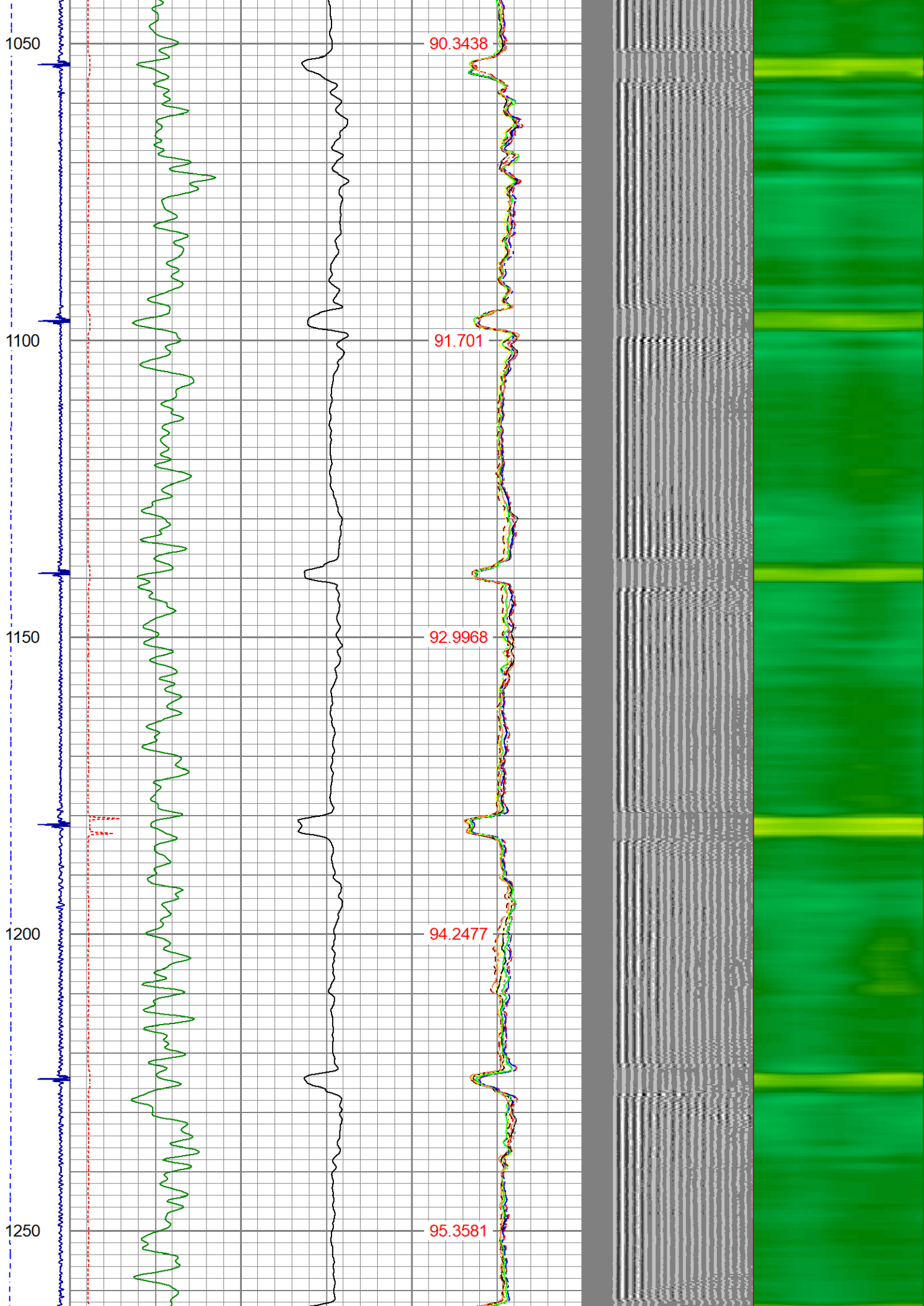


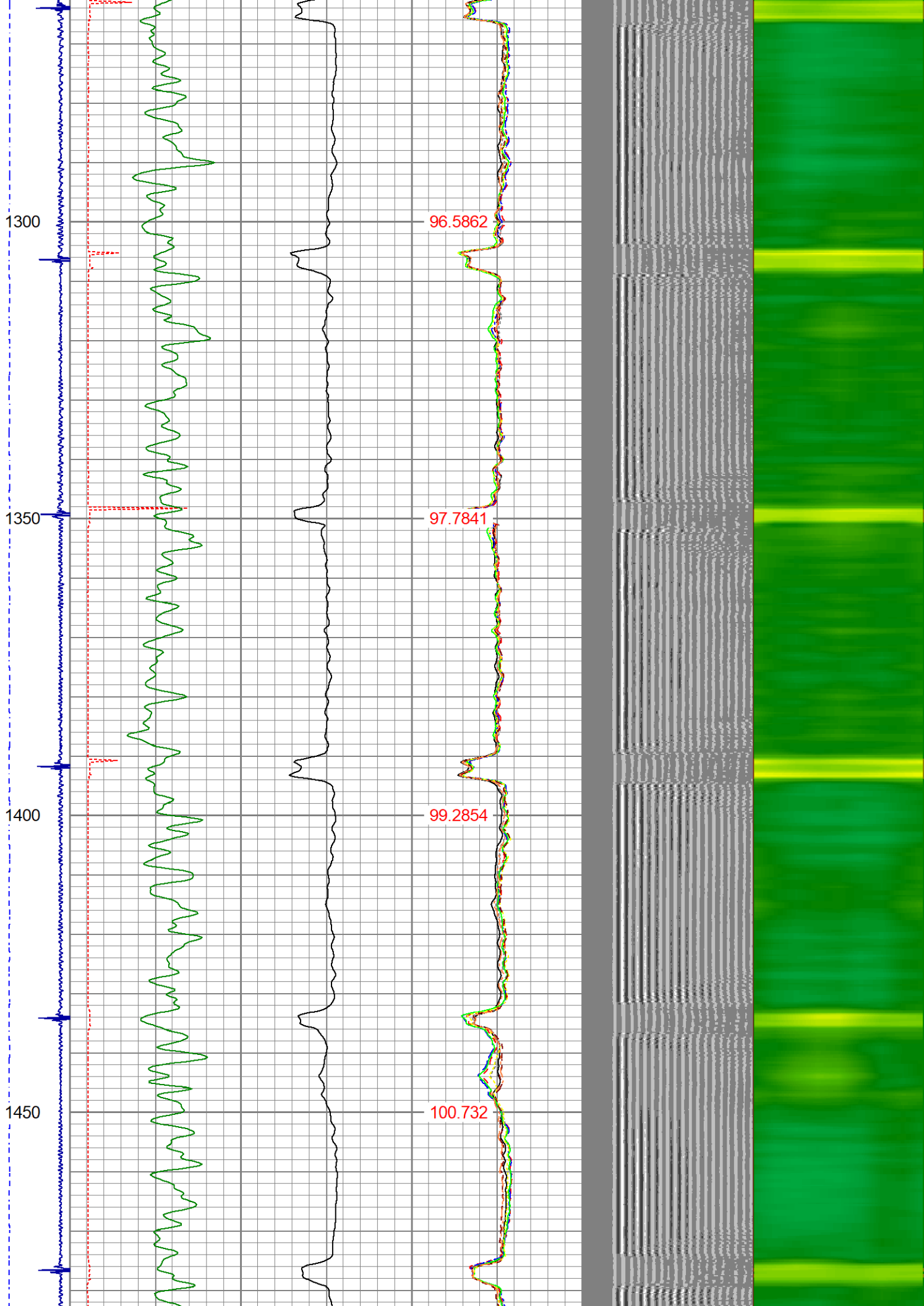


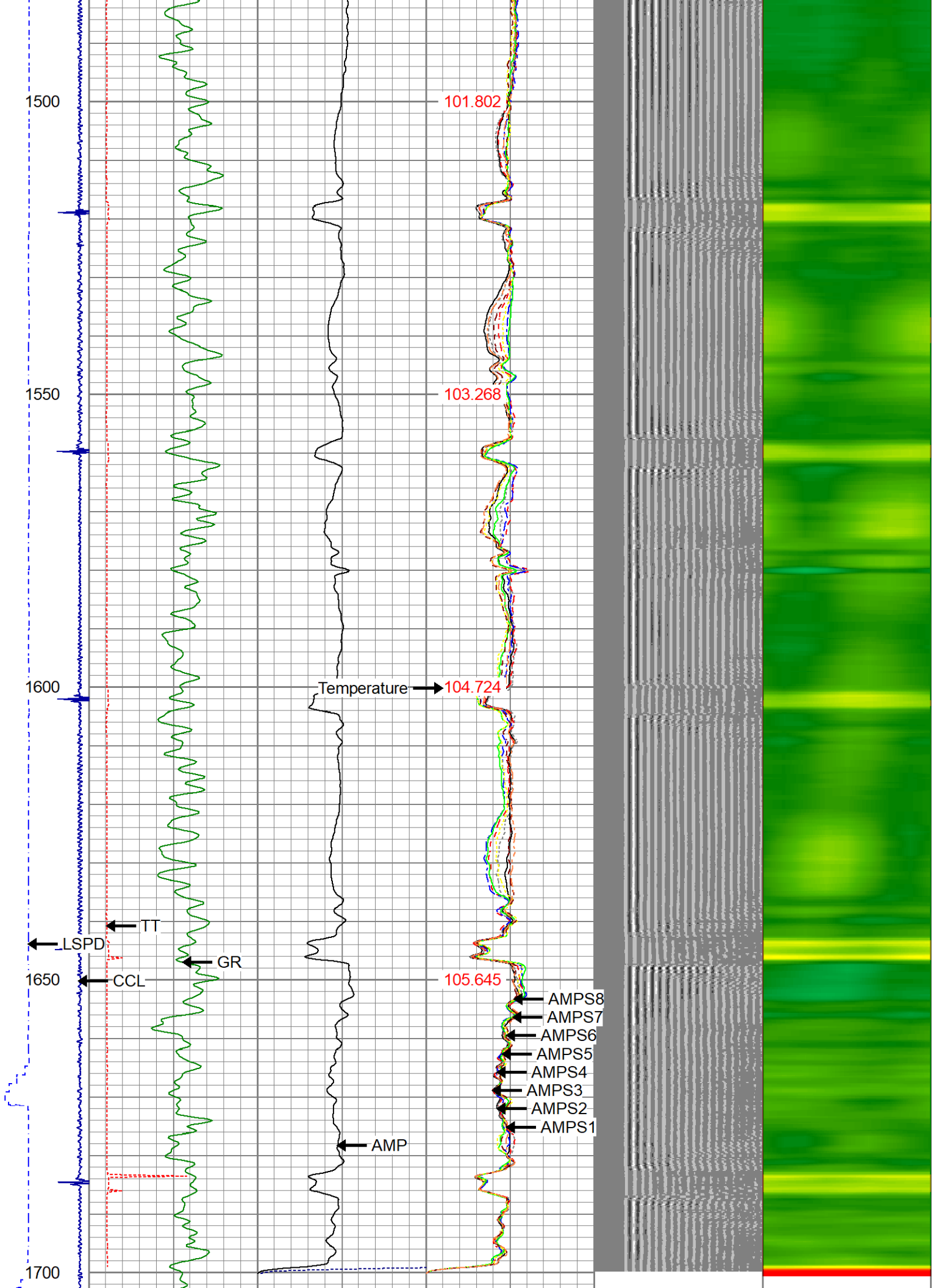












-9	CCL	1	200	TT (usec)	1000	0	AMP (mV)	100	0	AMPS1	100	200	VDL (usec)	1200	1	Cement Map	8
	LSPD		0	GR (GAPI)	200	0	AMPx5 (mV)	20	0	AMPS2	100						
	(ft/min)		200	GR (GAPI)	400				0	AMPS3	100						
0		250							0	AMPS4	100						
									0	AMPS5	100						
									0	AMPS6	100						
									0	AMPS7	100						
									0	AMPS8	100						
										TEMP							
										(degF)							

### Calibration Report

Database File      trebor b 12-17.db  
Dataset Pathname   pass7  
Dataset Creation    Wed Oct 19 16:23:08 2022

### Gamma Ray Calibration Report

Serial Number:           27GRL10-XXXX  
Tool Model:              27GRL10  
Performed:               (Not Performed)

Calibrator Value:        1.0                    GAPI

Background Reading:     0.0                    cps  
Calibrator Reading:      1.0                    cps

Sensitivity:              1.0000                GAPI/cps

### Segmented Cement Bond Log Calibration Report

Serial Number:           Greeley Ext Temp  
Tool Model:               27SBT10

Calibration Casing Diameter: 4.500            in  
Calibration Depth:        649.905           ft

### Master Calibration, performed (Derived):

	Raw (v)		Calibrated (mv)		Results	
	Zero	Cal	Zero	Cal	Gain	Offset
3'	0.000	1.041	0.250	81.196	77.727	0.246
CAL	0.015	1.205				
5'	0.000	0.891	0.250	81.196	90.871	0.246
SUM						
S1	0.000	1.049	0.000	81.196	77.400	-0.004
S2	0.000	1.005	0.000	81.196	80.819	-0.004
S3	0.000	0.989	0.000	81.196	82.105	-0.004
S4	0.000	0.994	0.000	81.196	81.681	-0.004
S5	0.000	0.999	0.000	81.196	81.280	-0.004
S6	0.000	1.020	0.000	81.196	79.622	-0.004
S7	0.000	1.035	0.000	81.196	78.439	-0.004
S8	0.000	1.041	0.000	81.196	77.977	-0.004

Internal Reference Calibration, performed Wed Sep 7 12:57:05 2022:

	Raw (v)		Calibrated (v)		Results	
	Zero	Cal	Zero	Cal	Gain	Offset
CAL	0.000	0.000	0.015	1.205	1.000	0.000

Air Zero Calibration, performed Thu Sep 29 11:53:23 2022:

	Raw (v)		Calibrated (v)		Results	
	Zero		Zero		Offset	
3'	0.000		0.000		0.000	
5'	0.000		0.000		0.000	
SUM						
S1	0.000		0.000		0.000	
S2	0.000		0.000		0.000	
S3	0.000		0.000		0.000	
S4	0.000		0.000		0.000	
S5	0.000		0.000		0.000	
S6	0.000		0.000		0.000	
S7	0.000		0.000		0.000	
S8	0.000		0.000		0.000	



Company	CHEVRON	
Well	TREBOR B12-17	
Field	WATTENBERG	
County	WELD	
State	CO	Country USA