

RECEIVED

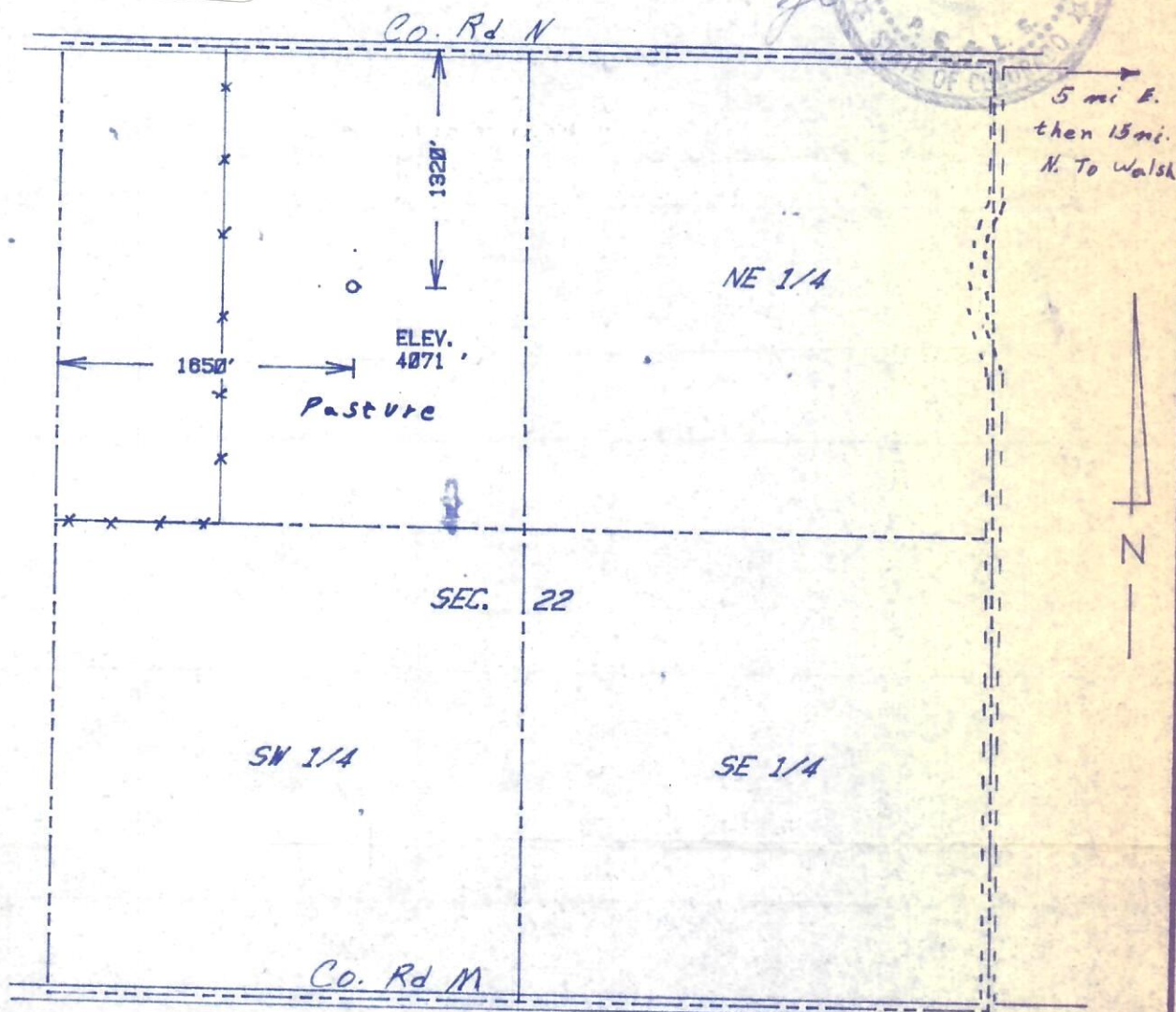
AUG 24 1984

COLO. OIL & GAS CONS. COMM.

The accompanying plat is an accurate representation showing the location of a proposed well. This location may be described as a point 1320 feet south of the north line, and 1650 feet east of the west line of Section 22, Township 33 S Range 44 W of the 6th P.M., BACA County, COLORADO. The surface elevation at this point is 4071 feet m.s.l.



00695729



SCALE - 1"=1000'

- SURVEYED POINT
- REFERENCE STAKE (200 'N, 200 'W)
- NW 1/4 SEC. 22, T 33 S, R 44 W

HARMON
ENGINEERING
SERVICES

GLASGOW PROSPECT [RE-STAKE]

Kimbank Operating Co.

BACA CO., COLORADO

16 AUGUST 1984

