




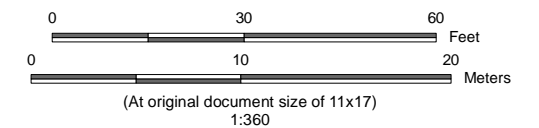


-  Monitoring Well
-  Release Location
-  Remedial Excavation
-  Groundwater Elevation Contour (feet)
-  Groundwater Flow Direction
- DRY** Insufficient Water to Collect a Sample
- NM** Not Measured
- PROD** Light Non-Aqueous Phase Liquid (LNAPL) Detected in Well



Notes
 1. Coordinate System: WGS 1984 Web Mercator Auxiliary Sphere
 2. Background: © 2023 Microsoft Corporation © 2023 Maxar ©CNES (2023) Distribution Airbus DS
 Sources: Esri, USGS, NOAA



Project Location
 COUNTY ROAD 10 1/2
 WELD COUNTY, COLORADO

Drawn by CCL on 2023-08-02
 Reviewed by CR on 2023-08-03

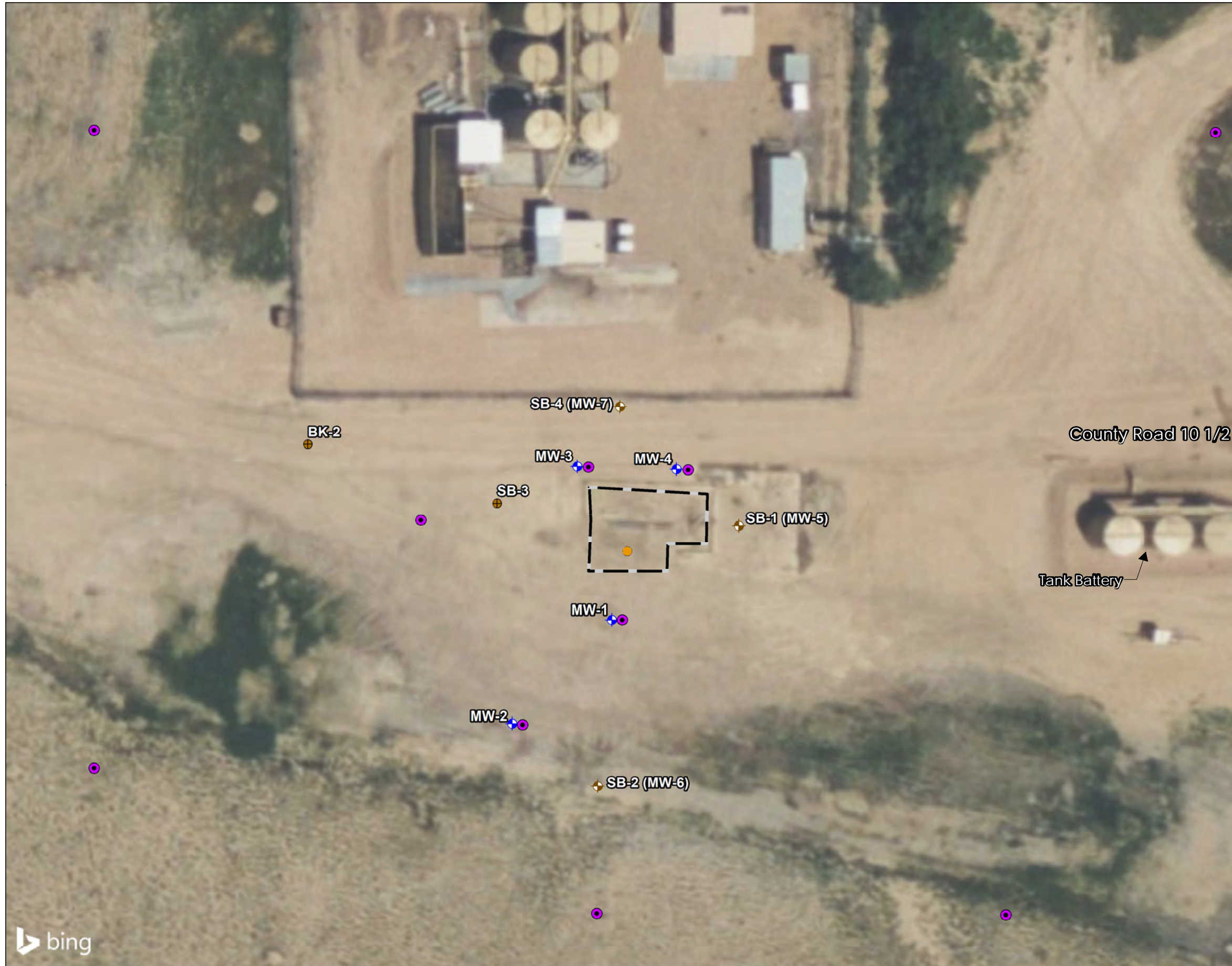
Client/Project
 K.P. KAUFFMAN COMPANY, INC
 Suckla-Brown Unit 17 Header

Figure No.
 1

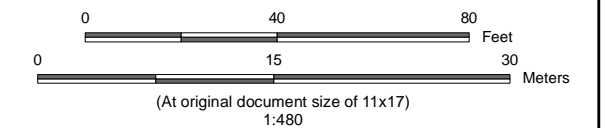
Title
 GROUNDWATER ELEVATION
 CONTOUR MAP
 JULY 19, 2023

V:\2037\active\20372325\05_report_deliv\dwgs_design\cad_figures\KPK Suckla Brown Header #17.mxd\F1_GW_Contours.mxd Revised: 2023-08-02 By: ccllee

V:\2037\active\20372325\05_report_deliv\dwg_figures\KPK Suckla Brown Header #17.mxd\F2_Proposed_Soil_Borings.mxd Revised: 2023-08-09 By: cdee



- Proposed Soil Sample
- Monitoring Well
- Soil Boring Completed as MW
- Soil Boring
- Release Location
- Remedial Excavation



Notes
 1. Coordinate System: WGS 1984 Web Mercator Auxiliary Sphere
 2. Background: © 2023 Microsoft Corporation © 2023 Maxar ©CNES (2023) Distribution Airbus DS
 Sources: Esri, USGS, NOAA



Project Location
 COUNTY ROAD 10 1/2
 WELD COUNTY, COLORADO

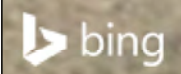
Drawn by CCL on 2023-08-02
 Reviewed by CR on 2023-08-03

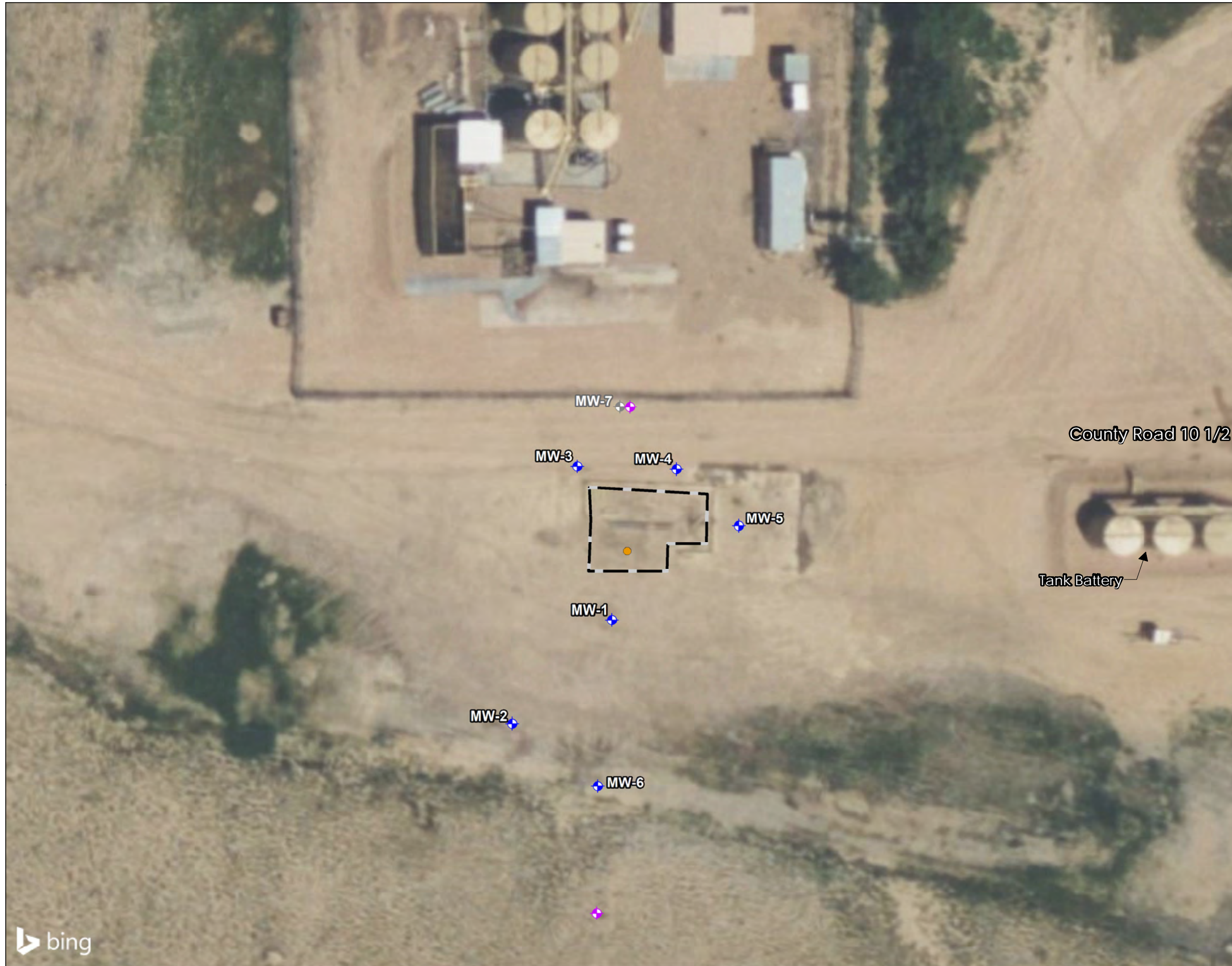
Client/Project
 K.P. KAUFFMAN COMPANY, INC
 Suckla-Brown Unit 17 Header






Figure No.
2

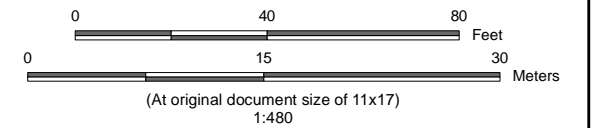
Title

PROPOSED SOIL SAMPLE LOCATION MAP





-  Proposed Monitoring Well
-  Monitoring Well
-  Destroyed Monitoring Well
-  Release Location
-  Remedial Excavation



Notes
 1. Coordinate System: WGS 1984 Web Mercator Auxiliary Sphere
 2. Background: © 2023 Microsoft Corporation © 2023 Maxar ©CNES (2023) Distribution Airbus DS
 Sources: Esri, USGS, NOAA



Project Location
 COUNTY ROAD 10 1/2
 WELD COUNTY, COLORADO

Drawn by CCL on 2023-08-02
 Reviewed by CR on 2023-08-03

Client/Project
 K.P. KAUFFMAN COMPANY, INC
 Suckla-Brown Unit 17 Header

Figure No.
3

Title
**PROPOSED MONITORING WELL
 LOCATION MAP**

