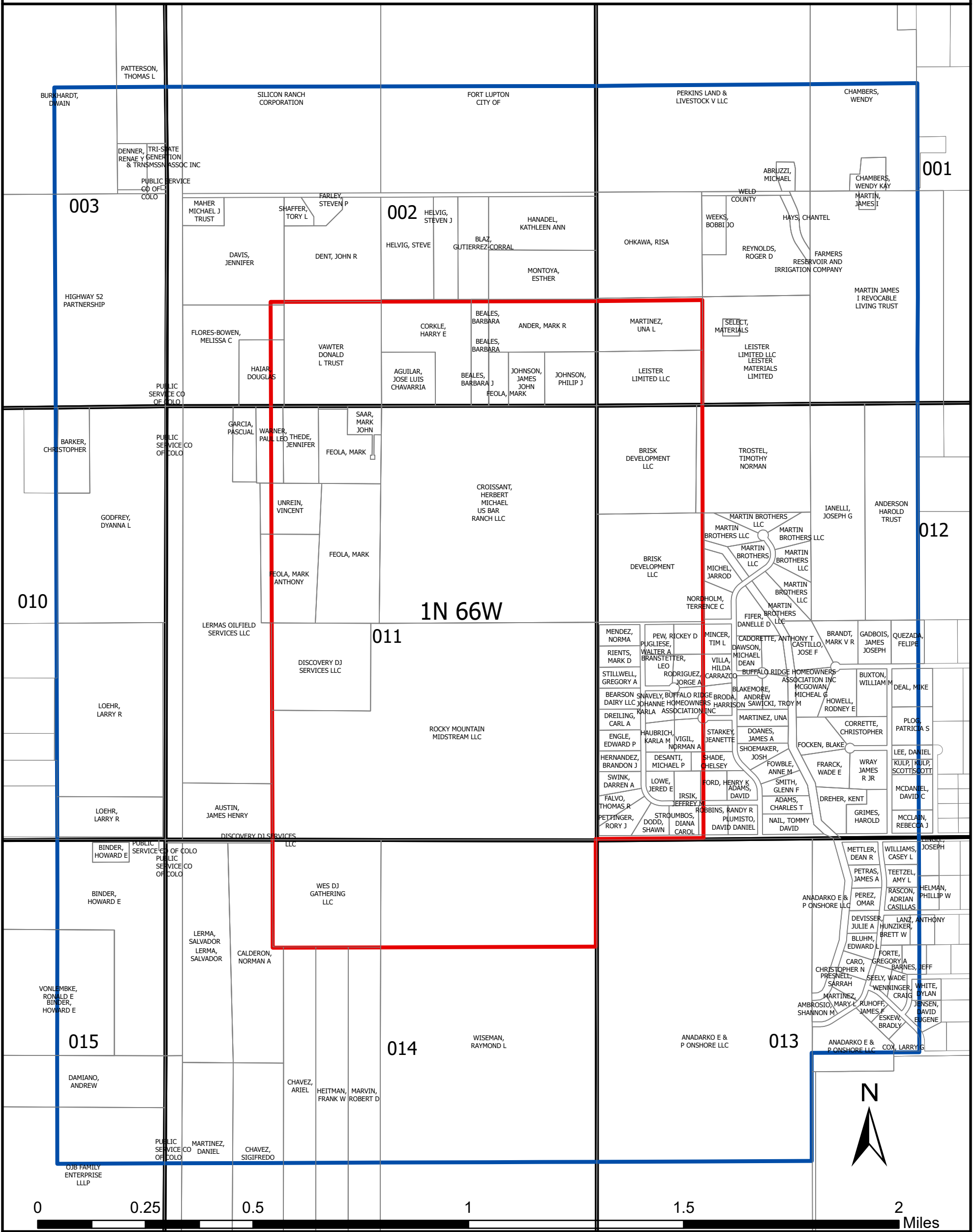


GRISWOLD EOR UNIT SURFACE OWNERSHIP

GRISWOLD UNIT AREA:
SECTION 1 (SW4SW4), SECTION 2 (S2SE4, SE4SW4), SECTION 11 (E2, E2W2), SECTION 12 (W2W2), SECTION 14 (N2NE4, NE4NW4). TOWNSHIP 1 NORTH, RANGE 66 WEST
WELD COUNTY, COLORADO



- Griswold EOR Unit
- .5 Mile Unit Buffer
- Tax Parcel

Map generated for requirements of Rule 811.b.(8)
Please reference surface owners list for names and
additional information regarding the noted surface tracts.

