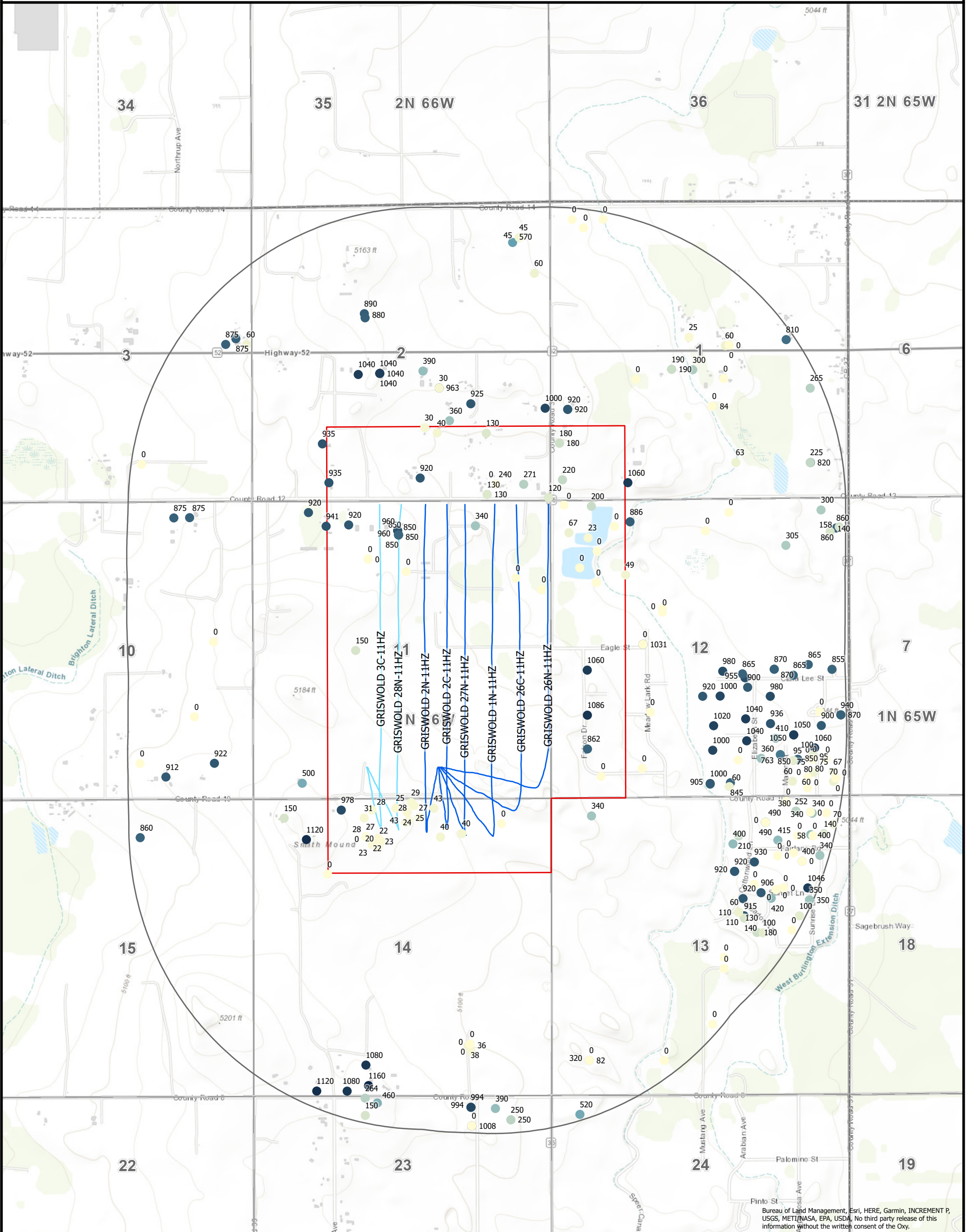


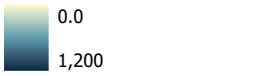
GRISWOLD EOR UNIT

UNIT AREA:
SECTION 1 (SW4SW4), SECTION 2 (S2SE4, SE4SW4), SECTION 11 (E2, E2W2), SECTION 12 (W2W2), SECTION 14 (N2NE4, NE4NW4). TOWNSHIP 1 NORTH, RANGE 66 WEST
WELD COUNTY, COLORADO

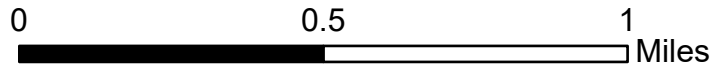


DWR Water Wells (264)

Well Depth



- Operational Support Wells
- Proposed Injection Wells
- Proposed Injection Wells 1 Mile Buffer
- Griswold EOR Unit



Map generated for requirements of Rule 803.g.(8).
Please reference water well list provided for additional well information

