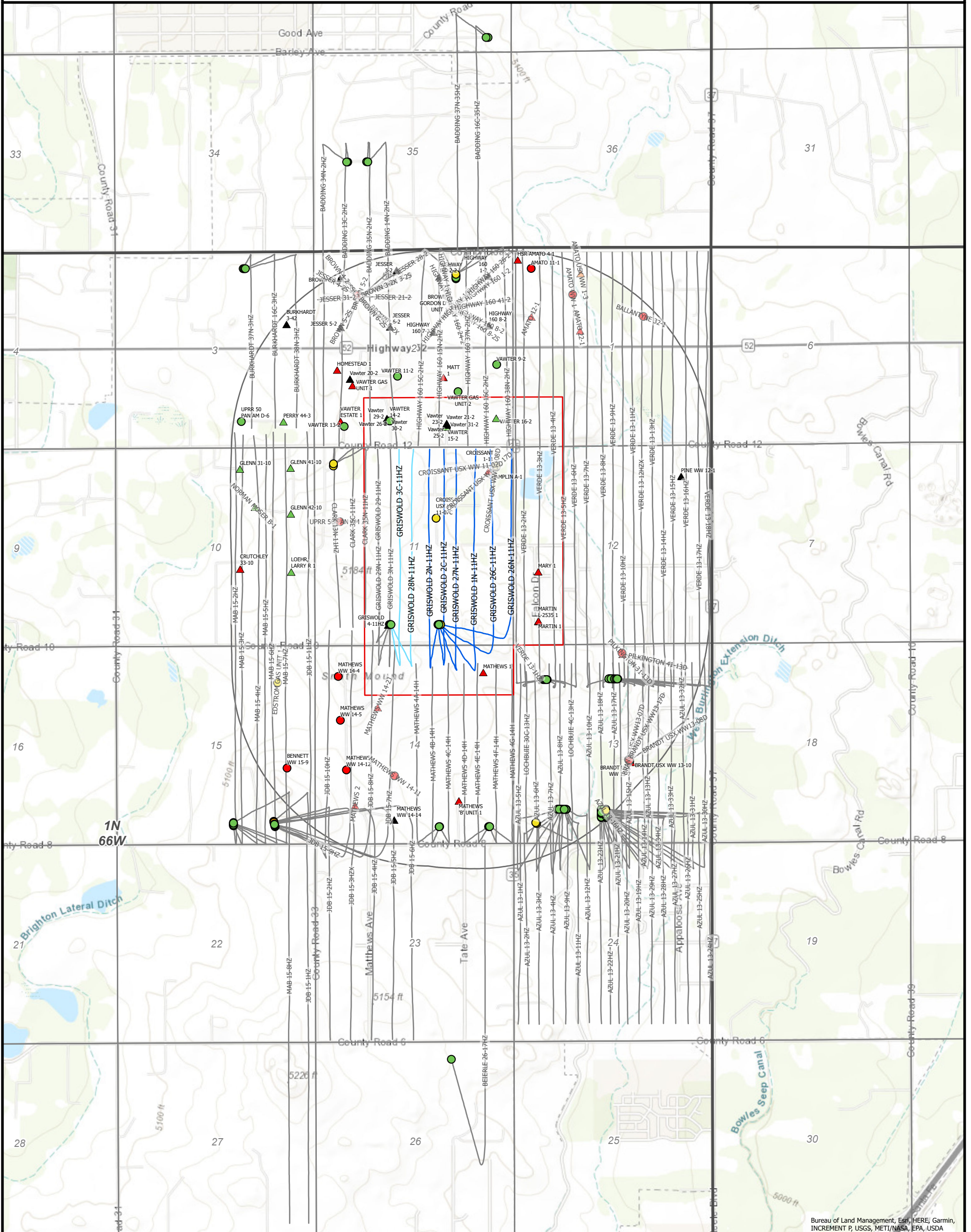


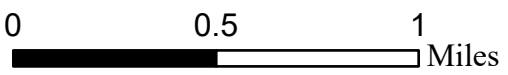
GRISWOLD EOR UNIT

UNIT AREA:
SECTION 1 (SW4SW4), SECTION 2 (S2SE4, SE4SW4), SECTION 11 (E2, E2W2), SECTION 12 (W2W2), SECTION 14 (N2NE4, NE4NW4). TOWNSHIP 1 NORTH, RANGE 66 WEST
WELD COUNTY, COLORADO



Bureau of Land Management, Esri, HERE, Garmin, INCREMENT P, USGS, METI/NASA, EPA, USDA

- Injection Zone Producing Wells**
- PA
 - PR
 - SI
 - TA
- Non-Injection Zone Wells**
- ▲ PA
 - ▲ PR
 - ▲ SI
 - ▲ TA
 - ▲ AL
- Operational Support Wells**
- Proposed Injection Wells
 - Well Paths
 - Griswold EOR Unit
 - Proposed Injection Wells 1 Mile Buffer



Map generated for requirements of Rule 803.g.(7).A
Please reference oil and gas well list provided for additional well information

