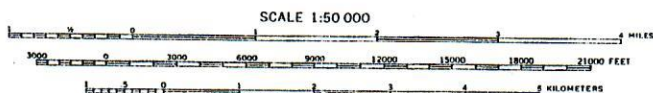
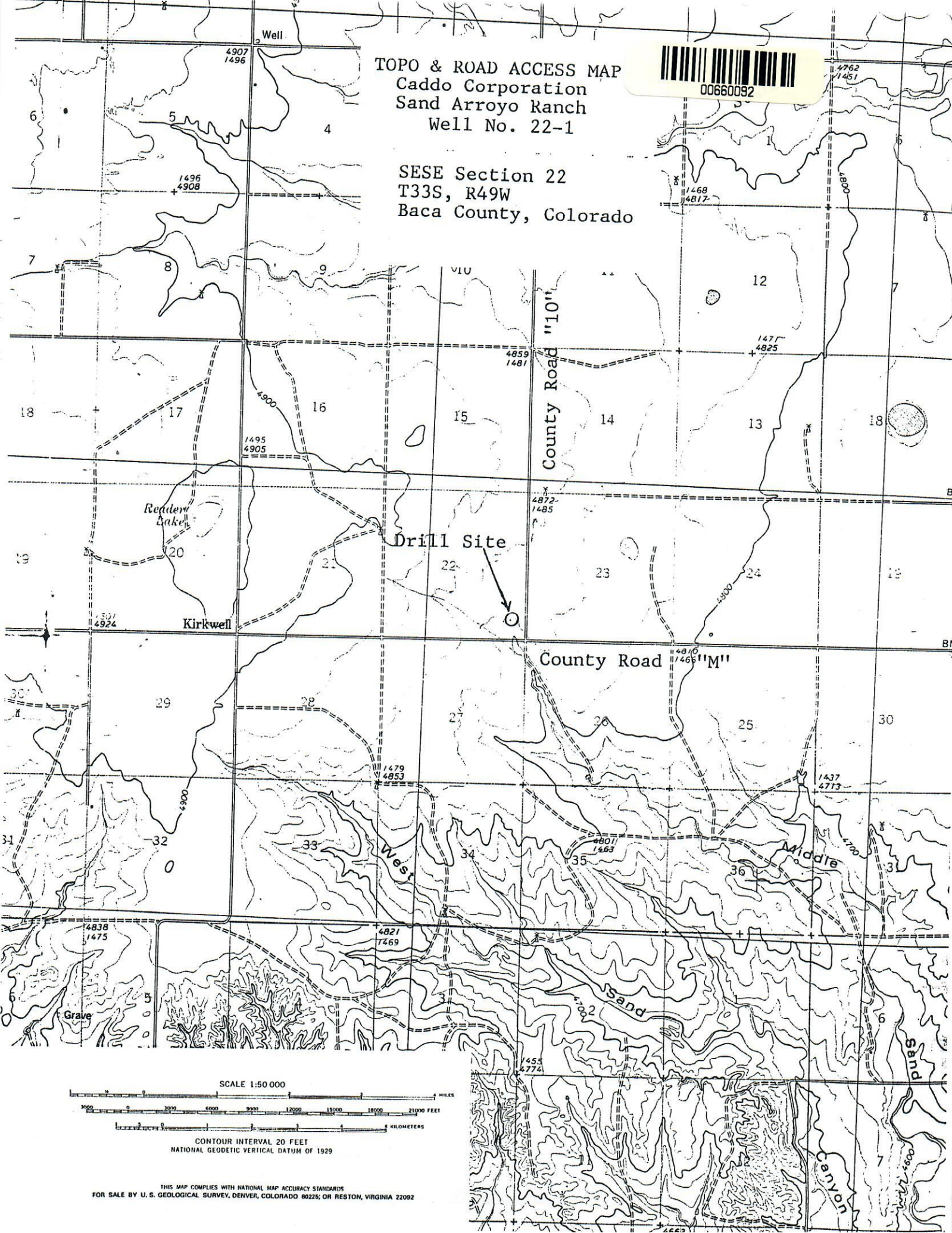


TOPO & ROAD ACCESS MAP  
Caddo Corporation  
Sand Arroyo Ranch  
Well No. 22-1



SESE Section 22  
T33S, R49W  
Baca County, Colorado



CONTOUR INTERVAL 20 FEET  
NATIONAL GEODETIC VERTICAL DATUM OF 1929