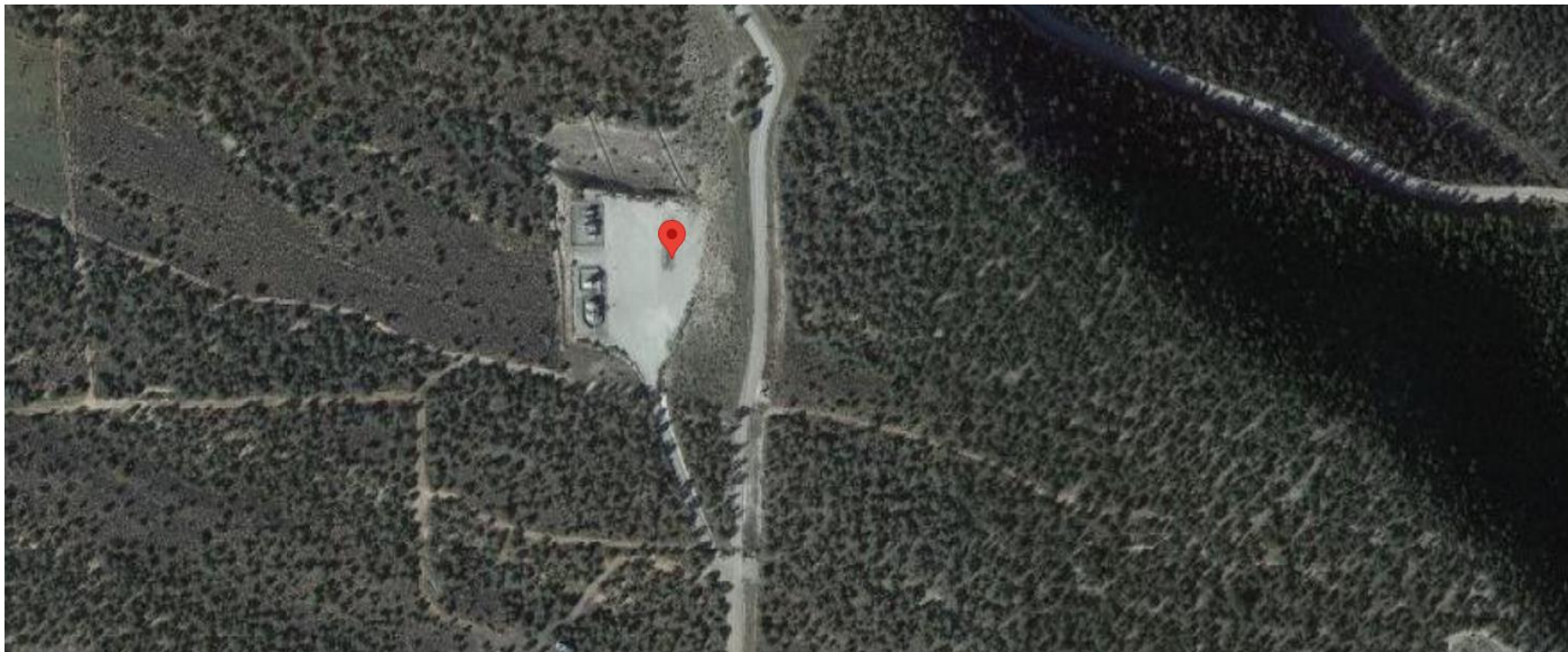


Storm Water Management and Erosion control
Location Name: CAERUS PICEANCE LLC CASS-GARBER Pad
Location ID: 334129



**Location Overview: Location is within Black Bear Habitat & in
close proximity to High Priority/Density Habitat areas.**

Section/Township/Range: 1 8S96W



COLORADO
Energy & Carbon Management
Commission
Department of Natural Resources

Storm water Management and Erosion control
Location Name: CAERUS PICEANCE LLC CASS-GARBER Pad
Location ID: 334129



North West corner of location.



North East corner of location.



South West corner of location.



South East corner of location.

Storm water Management and Erosion control
Location Name: CAERUS PICEANCE LLC CASS-GARBER Pad
Location ID: 334129



Photo # 6737 Improperly stored chemicals/chemical containers



Photo # 6753 Check dam & culvert inlet/BMP's need maintenance (near entrance to location) Slope showing signs of lack of stabilization

Storm water Management and Erosion control
Location Name: CAERUS PICEANCE LLC CASS-GARBER Pad
Location ID: 334129



Photo # 6754 Check dam & culvert inlet/BMP's need maintenance (near entrance to location) Slope showing signs of lack of stabilization



Photo # 6755 Culvert outlet needs maintenance (near entrance to location)

Storm water Management and Erosion control
Location Name: CAERUS PICEANCE LLC CASS-GARBER Pad
Location ID: 334129



Photo # 6755 Culvert outlet needs maintenance (near entrance to location)



Photo # 6761 Check dams need maintenance

Storm water Management and Erosion control
Location Name: CAERUS PICEANCE LLC CASS-GARBER Pad
Location ID: 334129



Photo # 6768 Failure to maintain chemical BMP/chemical containment approximately 3/8th full of fluid (approximately 5/10th of a mile down lease road & 50-75 yards past spur road turnoff to CASS-GARBER pad)



Photo # 6771 Failure to maintain chemical BMP/chemical containment approximately 3/8th full of fluid (approximately 5/10th of a mile down lease road & 50-75 yards past spur road turnoff to CASS-GARBER pad)