

Wellhead Closure Checklist

COGCC Rule 911.a.(4) Environmental Site Closure Assessment Field Form

Additional attachments (optional):		Pit Closure <input type="checkbox"/>		Tank Battery Closure <input type="checkbox"/>		Flowline Closure <input type="checkbox"/>		Partially Buried Vault Closure <input type="checkbox"/>	
Site Name & COGCC Facility Number: Ocoma G #25-16		Date: 01/16/23				Remediation Project #: 25588			
Associated Wells: 05-123-13356		Age of Site: Years				Number of Photos Attached: 1			
Location: (GPS coordinates of wellhead or southeastern most wellhead for multiple)						40.277780 / -104.604080		Estimated Facility Size (acres):	
General Condition of Site: (General observations regarding housekeeping, corrosion, waste management, etc.) Good Condition									
USCS Soil Type: Clayey SAND					Estimated Depth to Groundwater: Approx. 10-15'				
Hydrocarbon Impacted Soils / Spills: (Note estimated size and if impact appears to be surficial or extends to an unknown depth) Hydrocarbon odor observed in excavation.									
Salt Crusted Soils or Impacted Vegetation: (Note estimated size and if impact appears to be surficial or extends to an unknown depth) None observed.									
Wellhead(s)									
Well API	05-123-13356								
Age	Years								
Condition of surface around wellhead	Good - Per Crew								
PID Readings	N/A - Excavated Upon Arrival								
Condition of subsurface (staining present)	Odor observed. No staining.								
PID Readings	49.6	143.5	9.5	6.4	807.6				
Sample taken? Location/Sample ID#	WH-SS-01	WH-SS-02	WH-SS-03	WH-SS-04	WH-FS-01				
Photo Number(s)	See photolog								
Other observations regarding wellheads: Well casing cut/capped following assessment.									
Summary									
Was impacted soil identified? No <input type="checkbox"/> Yes <input checked="" type="checkbox"/> - less than 10 cubic yards Yes - more than 10 cubic yards									
Total number of samples field screened: 5				Total number of samples collected: 5					
Highest PID Reading: 807.6				Total number of samples submitted to lab for analysis: 5					
If more than 10 cubic yards of impacted soil were observed:									
Vertical extent:				Estimated spill volume:					
N/A									
Lateral extent:				Volume of soil removed:					
Is additional investigation required?									
Was groundwater encountered during the investigation? <input checked="" type="checkbox"/> No Yes - not impacted or in contact with impacted soils Yes - groundwater impacted and/or in contact with impacted soils									
Measured depth to groundwater:				Was remedial groundwater removal conducted? Yes No					
Date Groundwater was encountered:				Commencement date of removal:					
Sheen on groundwater? Yes No				Volume of groundwater removed prior to sampling:					
Free product observed? Yes No				Volume of groundwater removed post sampling:					
Total number of samples collected:				Total Volume of groundwater removed:					
Total number of samples submitted to lab for analysis:									



FIGURES

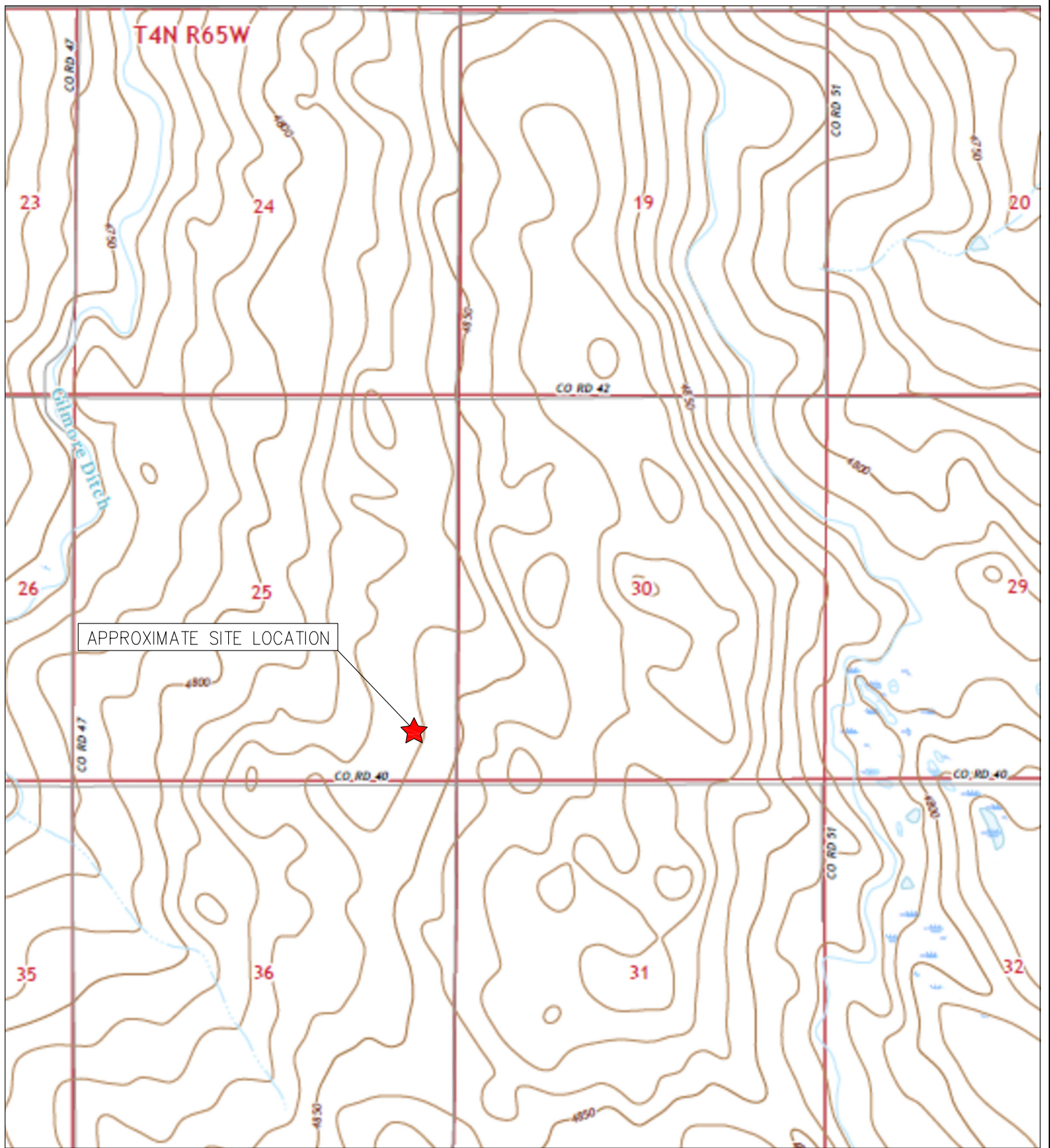
Figure 1: Topographic Site Location Map

Figure 2: Aerial Site Location Map

Figure 3: Soil Analytical Map

Figure 4: Polycyclic Aromatic Hydrocarbons Map

Figure 5: Metals in Soil Map



TOPOGRAPHIC SITE LOCATION MAP
 OCOMA G #25-16
 CLOSURE ASSESSMENT
 40.277780 / -104.604080
 SE¼ SE¼ SEC.25 T4N R65W 6PM
 WELD COUNTY, COLORADO
 API # 05-123-13356
 REMEDIATION # 25588



EAGLE
 ENVIRONMENTAL
 CONSULTING, LLC

8000 W 44th Ave, Wheat Ridge, CO 80033
 Ph: 303-433-0479 • F: 303-325-5449

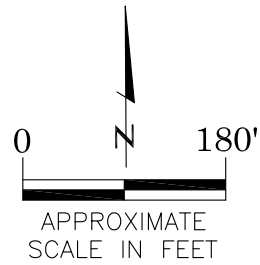
SOURCE: USGS 7.5 MINUTE TOPOGRAPHIC MAP,
 VALLEY VIEW SCHOOL, CO QUADRANGLE 2022

FIGURE 1



LEGEND

- FORMER OCOMA G #25-16 WELLHEAD (PLUGGED AND ABANDONED)
- ASSOCIATED SEPARATOR
- APPROXIMATE FLOWLINE LOCATION



AERIAL SITE LOCATION MAP
 OCOMA G #25-16
 CLOSURE ASSESSMENT
 40.277780 / -104.604080
 SE¼ SE¼ SEC.25 T4N R65W 6PM
 WELD COUNTY, COLORADO
 API # 05-123-13356
 REMEDIATION # 25588

FIGURE NO.
2

DRAWN BY:
GK



EAGLE

ENVIRONMENTAL
CONSULTING, LLC

8000 W 44th Ave, Wheat Ridge, CO 80033
Ph: 303-433-0479 • F: 303-325-5449

LEGEND

--- WELLHEAD ASSESSMENT BOUNDARIES

● APPROXIMATE LOCATION OF SOIL SAMPLES SUBMITTED FOR LABORATORY ANALYSIS

PARAMETERS

SAMPLE LOCATION
 DATE
 DEPTH (FEET)
 B = BENZENE (mg/kg)
 T = TOLUENE (mg/kg)
 E = ETHYLBENZENE (mg/kg)
 X = TOTAL XYLENES (mg/kg)
 G = TPH-GRO (mg/kg)
 D = TPH-DRO (mg/kg)
 R = TPH-RRO (mg/kg)
 1,2,4-TMB = 1,2,4 TRIMETHYLBENZENE (mg/kg)
 1,3,5-TMB = 1,3,5 TRIMETHYLBENZENE (mg/kg)
 Brn= BORON (mg/L)
 EC = SPECIFIC CONDUCTANCE (mmhos/cm)
 SAR= SODIUM ADSORPTION RATIO
 pH = pH (pH UNITS)

mg/kg = MILLIGRAMS PER KILOGRAM
 mg/L = MILLIGRAMS PER LITER
 mmhos/cm = MILLIMHOS PER CENTIMETER

TPH-GRO = TOTAL PETROLEUM HYDROCARBONS - GASOLINE RANGE ORGANICS
 TPH-DRO = TOTAL PETROLEUM HYDROCARBONS - DIESEL RANGE ORGANICS
 TPH-RRO = TOTAL PETROLEUM HYDROCARBONS - RESIDUAL RANGE ORGANICS

NOTES:
 VALUES PRESENTED WITH A LESS THAN SYMBOL (<) DID NOT CONTAIN CONCENTRATIONS AT OR ABOVE LABORATORY DETECTION LIMITS.

VALUES PRESENTED IN **BOLD** EXCEED COGCC TABLE 915-1 REGULATORY LIMITS.

VALUES PRESENTED WITH ASTERISK (*) EXCEED COGCC TABLE 915-1 PROTECTION OF GROUNDWATER SOIL SCREENING LEVELS.

COGCC = COLORADO OIL AND GAS CONSERVATION COMMISSION

SOIL ANALYTICAL MAP
 OCOMA G #25-16
 CLOSURE ASSESSMENT
 40.277780 / -104.604080
 SE¼ SE¼ SEC.25 T4N R65W 6PM
 WELD COUNTY, COLORADO
 API # 05-123-13356
 REMEDIATION # 25588

FIGURE NO.
3

DRAWN BY:
GK



EAGLE
 ENVIRONMENTAL
 CONSULTING, LLC
 8000 W 44th Ave, Wheat Ridge, CO 80033
 Ph: 303-433-0479 • F: 303-325-5449

WH-FS-01@6'
 01/16/23
 6'
 B = <0.00200
 T = 0.00534
 E = <0.00200
 X = **11.2***
 G = **409**
 D = **802**
 R = **235**
 1,2,4-TMB = **6.34***
 1,3,5-TMB = **4.53***
 Brn= <0.101
 EC = 0.574
 SAR= 0.916
 pH = 7.71

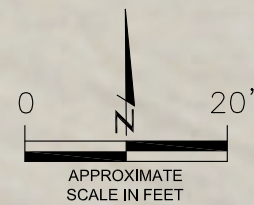
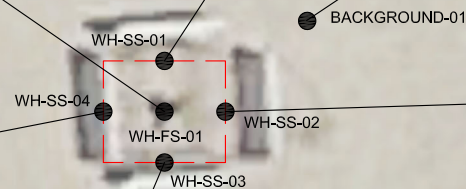
WH-SS-01@5'
 01/16/23
 5'
 B = <0.00200
 T = <0.00200
 E = <0.00200
 X = <0.00200
 G = 0.266
 D = <25.0
 R = <100
 1,2,4-TMB = <0.00200
 1,3,5-TMB = **0.0113***
 Brn= <0.101
 EC = 0.408
 SAR= 0.575
 pH = 8.28

BACKGROUND-01@2'
 01/16/23
 2'
 pH = 7.74

WH-SS-02@5'
 01/16/23
 5'
 B = <0.00200
 T = <0.00200
 E = <0.00200
 X = 0.0345
 G = 4.30
 D = 63.6
 R = <100
 1,2,4-TMB = **0.0195***
 1,3,5-TMB = **0.0511***
 Brn= <0.100
 EC = 0.526
 SAR= 1.15
 pH = **8.34**

WH-SS-03@5'
 01/16/23
 5'
 B = <0.00200
 T = <0.00200
 E = <0.00200
 X = <0.00200
 G = <0.200
 D = <25.0
 R = <100
 1,2,4-TMB = <0.00200
 1,3,5-TMB = 0.00288
 Brn= <0.100
 EC = 0.987
 SAR= 1.24
 pH = 8.16

WH-SS-04@5'
 01/16/23
 5'
 B = <0.00200
 T = <0.00200
 E = <0.00200
 X = <0.00200
 G = <0.200
 D = <25.0
 R = <100
 1,2,4-TMB = <0.00200
 1,3,5-TMB = <0.00200
 Brn= <0.100
 EC = 0.306
 SAR= 0.375
 pH = 7.98



LEGEND

--- WELLHEAD ASSESSMENT BOUNDARIES

● APPROXIMATE LOCATION OF SOIL SAMPLES
 SS-02 SUBMITTED FOR LABORATORY ANALYSIS

PARAMETERS

SAMPLE LOCATION
 DATE SAMPLE COLLECTED
 APPROXIMATE DEPTH
 POLYCYCLIC AROMATIC HYDROCARBONS (PAHs) (mg/kg)

mg/kg = MILLIGRAMS PER KILOGRAM

NOTES:
 VALUES PRESENTED WITH A LESS THAN SYMBOL (<) DID NOT CONTAIN CONCENTRATIONS AT OR ABOVE LABORATORY DETECTION LIMITS.

VALUES PRESENTED IN **BOLD** EXCEED COGCC TABLE 915-1 REGULATORY LIMITS.

VALUES PRESENTED WITH AN ASTERISK (*) EXCEED COGCC TABLE 915-1 GROUNDWATER SOIL SCREENING LEVELS.

COGCC = COLORADO OIL AND GAS CONSERVATION COMMISSION

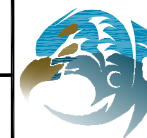
POLYCYCLIC AROMATIC HYDROCARBONS MAP
 OCOMA G #25-16
 CLOSURE ASSESSMENT
 40.277780 / -104.604080
 SE¼ SE¼ SEC.25 T4N R65W 6PM
 WELD COUNTY, COLORADO
 API # 05-123-13356
 REMEDIATION # 25588

FIGURE NO.

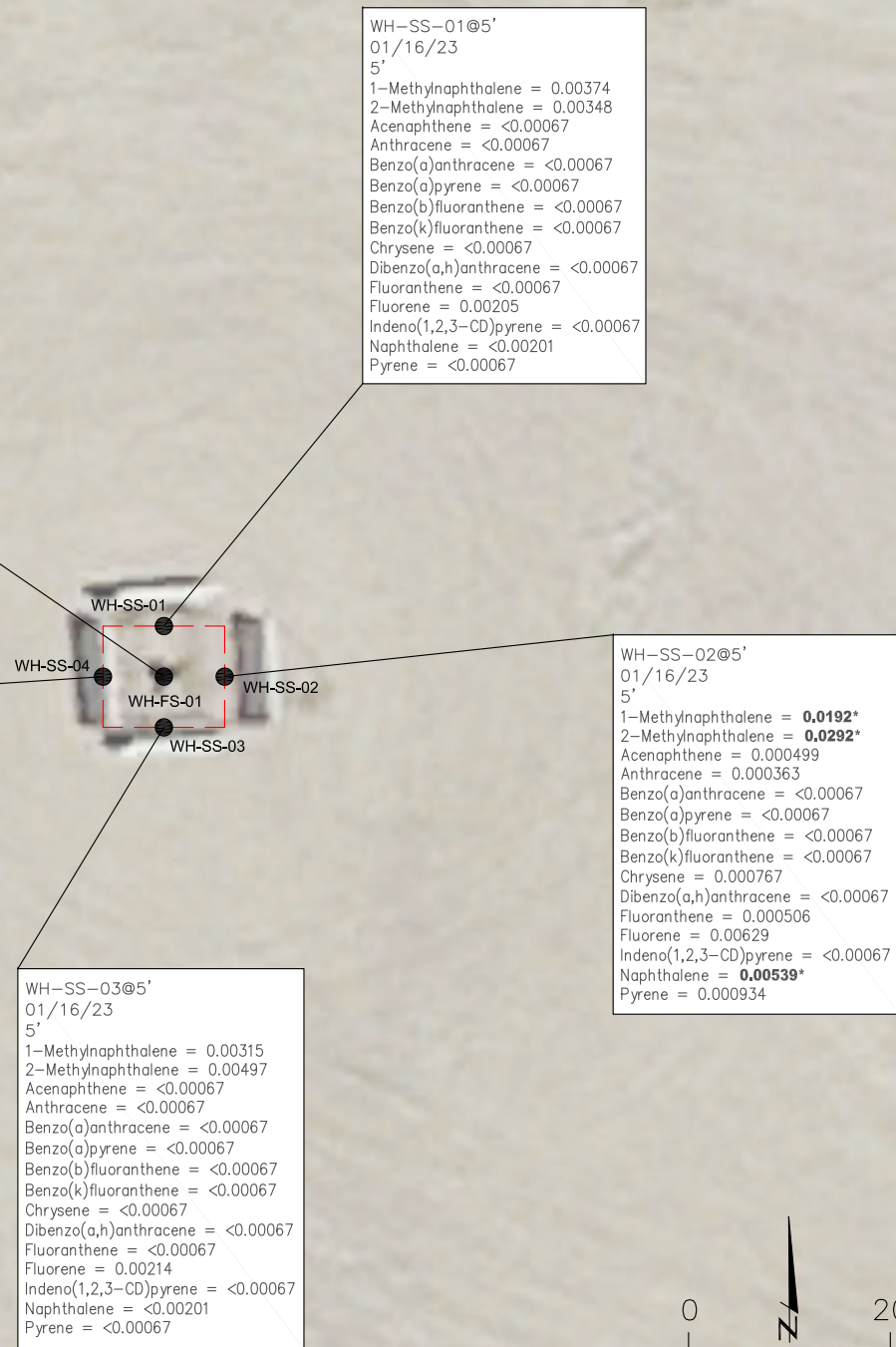
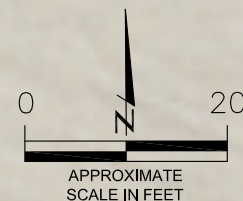
4

DRAWN BY:

GK



EAGLE
 ENVIRONMENTAL
 CONSULTING, LLC
 8000 W 44th Ave, Wheat Ridge, CO 80033
 Ph: 303-433-0479 • F: 303-325-5449



WH-FS-01@6'
 01/16/23
 6'
 1-Methylnaphthalene = **0.556***
 2-Methylnaphthalene = **1.06***
 Acenaphthene = 0.0764
 Anthracene = 0.0104
 Benzo(a)anthracene = 0.00302
 Benzo(a)pyrene = <0.00335
 Benzo(b)fluoranthene = <0.00335
 Benzo(k)fluoranthene = <0.00335
 Chrysene = 0.0107
 Dibenzo(a,h)anthracene = <0.00335
 Fluoranthene = <0.00335
 Fluorene = 0.128
 Indeno(1,2,3-CD)pyrene = <0.00335
 Naphthalene = **0.176***
 Pyrene = 0.00917

WH-SS-01@5'
 01/16/23
 5'
 1-Methylnaphthalene = 0.00374
 2-Methylnaphthalene = 0.00348
 Acenaphthene = <0.00067
 Anthracene = <0.00067
 Benzo(a)anthracene = <0.00067
 Benzo(a)pyrene = <0.00067
 Benzo(b)fluoranthene = <0.00067
 Benzo(k)fluoranthene = <0.00067
 Chrysene = <0.00067
 Dibenzo(a,h)anthracene = <0.00067
 Fluoranthene = <0.00067
 Fluorene = 0.00205
 Indeno(1,2,3-CD)pyrene = <0.00067
 Naphthalene = <0.00201
 Pyrene = <0.00067

WH-SS-02@5'
 01/16/23
 5'
 1-Methylnaphthalene = **0.0192***
 2-Methylnaphthalene = **0.0292***
 Acenaphthene = 0.000499
 Anthracene = 0.000363
 Benzo(a)anthracene = <0.00067
 Benzo(a)pyrene = <0.00067
 Benzo(b)fluoranthene = <0.00067
 Benzo(k)fluoranthene = <0.00067
 Chrysene = 0.000767
 Dibenzo(a,h)anthracene = <0.00067
 Fluoranthene = 0.000506
 Fluorene = 0.00629
 Indeno(1,2,3-CD)pyrene = <0.00067
 Naphthalene = **0.00539***
 Pyrene = 0.000934

WH-SS-03@5'
 01/16/23
 5'
 1-Methylnaphthalene = 0.00315
 2-Methylnaphthalene = 0.00497
 Acenaphthene = <0.00067
 Anthracene = <0.00067
 Benzo(a)anthracene = <0.00067
 Benzo(a)pyrene = <0.00067
 Benzo(b)fluoranthene = <0.00067
 Benzo(k)fluoranthene = <0.00067
 Chrysene = <0.00067
 Dibenzo(a,h)anthracene = <0.00067
 Fluoranthene = <0.00067
 Fluorene = 0.00214
 Indeno(1,2,3-CD)pyrene = <0.00067
 Naphthalene = <0.00201
 Pyrene = <0.00067

WH-SS-04@5'
 01/16/23
 5'
 1-Methylnaphthalene = <0.00201
 2-Methylnaphthalene = <0.00201
 Acenaphthene = <0.00067
 Anthracene = <0.00067
 Benzo(a)anthracene = <0.00067
 Benzo(a)pyrene = <0.00067
 Benzo(b)fluoranthene = <0.00067
 Benzo(k)fluoranthene = <0.00067
 Chrysene = <0.00067
 Dibenzo(a,h)anthracene = <0.00067
 Fluoranthene = <0.00067
 Fluorene = 0.00051
 Indeno(1,2,3-CD)pyrene = <0.00067
 Naphthalene = <0.00201
 Pyrene = <0.00067

WH-FS-01@6'
01/16/23
6'

Arsenic = 2.11***
Barium = **89.1***
Cadmium = 0.349
Chromium (VI) = <0.244**
Copper = <8.62
Lead = **15.9***
Nickel = <8.62
Selenium = 0.123
Silver = <0.0862
Zinc = <86.2

WH-SS-01@5'
01/16/23
5'

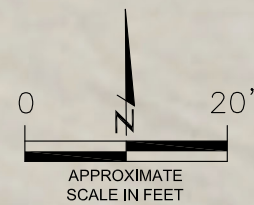
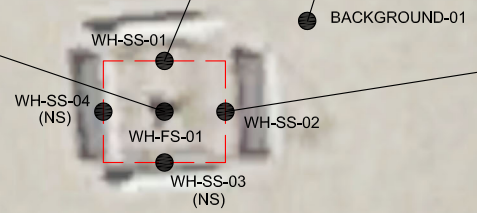
Arsenic = 1.56***
Barium = 60.1
Cadmium = 0.126
Chromium (VI) = <0.488**
Copper = <9.24
Lead = <9.24
Nickel = <9.24
Selenium = <0.0924
Silver = <0.0924
Zinc = <92.4

BACKGROUND-01@2'
01/16/23
2'

Arsenic = 1.97***
Barium = **123***
Cadmium = <0.0945
Copper = <9.45
Lead = <9.45
Nickel = <9.45
Selenium = <0.0945
Silver = <0.0945
Zinc = <94.5

WH-SS-02@5'
01/16/23
5'

Arsenic = 1.55***
Barium = 56.7
Cadmium = 0.117
Chromium (VI) = <0.497**
Copper = <8.51
Lead = **88.9***
Nickel = <8.51
Selenium = 0.0953
Silver = <0.0851
Zinc = <85.1



LEGEND

--- WELLHEAD ASSESSMENT BOUNDARIES

● APPROXIMATE LOCATION OF SOIL SAMPLES SUBMITTED FOR LABORATORY ANALYSIS

PARAMETERS

SAMPLE LOCATION
DATE SAMPLE COLLECTED
APPROXIMATE DEPTH
Arsenic = (mg/kg)
Barium = (mg/kg)
Cadmium = (mg/kg)
Chromium (VI) = (mg/kg)
Copper = (mg/kg)
Lead = (mg/kg)
Nickel = (mg/kg)
Selenium = (mg/kg)
Silver = (mg/kg)
Zinc = (mg/kg)

mg/kg = MILLIGRAMS PER KILOGRAM

(NS) – NOT SAMPLED

NOTES:

VALUES PRESENTED WITH A LESS THAN SYMBOL (<) DID NOT CONTAIN CONCENTRATIONS AT/OR ABOVE LABORATORY REPORTING LIMITS AND/OR MINIMUM DETECTION LIMITS.

VALUES PRESENTED IN **BOLD** EXCEED COGCC TABLE 915-1 REGULATORY LIMITS.

*VALUES EXCEED COGCC TABLE 915-1 PROTECTION OF GROUNDWATER SOIL SCREENING LEVELS.

**ACHIEVABLE PRACTICAL QUANTITATIVE LIMITS FOR HEXAVALENT CHROMIUM (Cr VI) IN SOILS IS IN THE RANGE OF 0.1 TO 1 mg/kg.

***ARSENIC IS NATURALLY OCCURRING IN COLORADO. LOCAL CLEAN-UP LEVEL (2.46 mg/kg) IS 1.25*BACKGROUND (1.97 mg/kg).

COGCC = COLORADO OIL AND GAS CONSERVATION COMMISSION

METALS IN SOIL MAP
OCOMA G #25-16
CLOSURE ASSESSMENT
40.277780 / -104.604080
SE¼ SE¼ SEC.25 T4N R65W 6PM
WELD COUNTY, COLORADO
API # 05-123-13356
REMEDIAION # 25588

FIGURE NO.
5

DRAWN BY:
GK



EAGLE
ENVIRONMENTAL
CONSULTING, LLC
8000 W 44th Ave, Wheat Ridge, CO 80033
Ph: 303-433-0479 • F: 303-325-5449



TABLES

Table 1: Photoionization Detector Reading Summary

Table 2: Soil Analytical Results Summary

TABLE 1
PHOTOIONIZATION DETECTOR READING SUMMARY
OCOMA G #25-16
CLOSURE ASSESSMENT
40.277780 / -104.604080
SE¼ SE¼ SEC.25 T4N R65W 6PM
WELD COUNTY, COLORADO
API # 05-123-13356
REMEDIATION # 25588

Sample Location (Latitude/Longitude)	Date	Approximate Depth (feet)	PID Reading (ppm-v)	Lab Submission (Y/N)
WH-SS-01 @ 5' (40.277801 / -104.604093)	01/16/23	5	49.6	Y
WH-SS-02 @ 5' (40.277790 / -104.604077)	01/16/23	5	143.5	Y
WH-SS-03 @ 5' (40.277776 / -104.604092)	01/16/23	5	9.5	Y
WH-SS-04 @ 5' (40.277788 / -104.604109)	01/16/23	5	6.4	Y
WH-FS-01 @ 6' (40.277788 / -104.604095)	01/16/23	6	807.6	Y
Background-01 @ 2' (40.277815 / -104.604051)	01/16/23	2	4.3	Y
(Y/N) = Yes or No ppm-v = parts per million by volume PID = Photoionization Detector				

TABLE 2
SOIL ANALYTICAL RESULTS
OCOMA G #25-16
CLOSURE ASSESSMENT
40.277780 / -104.604080
SE¼ SE¼ SEC.25 T4N R65W 6PM
WELD COUNTY, COLORADO
API # 05-123-13356
REMIEDIATION # 25588

Sample Location (Latitude / Longitude)		WH-SS-01 @ 5'	WH-SS-02 @ 5'	WH-SS-03 @ 5'	WH-SS-04 @ 5'	WH-FS-01 @ 6'	Background-01 @ 2'		
Sample Date		1/16/2023	1/16/2023	1/16/2023	1/16/2023	1/16/2023	1/16/2023		
Sample Depth		5	5	5	5	6	2		
PID Reading (ppm-v)		49.6	143.5	9.5	6.4	807.6	4.3		
Regulatory Limits									
Chemical of Concern	Units	COGCC Table 915-1 RSSLs	COGCC Table 915-1 GSSLs	Local Clean-Up Level					
VOCs									
Benzene	mg/kg	1.2	0.0026	--	<0.00200	<0.00200	<0.00200	NA	
Toluene	mg/kg	490	0.69	--	<0.00200	<0.00200	<0.00200	0.00534	
Ethylbenzene	mg/kg	5.8	0.78	--	<0.00200	<0.00200	<0.00200	NA	
Total Xylenes	mg/kg	58	9.9	--	<0.00200	0.0345	<0.00200	11.2*	
1,2,4-Trimethylbenzene	mg/kg	30	0.0081	--	<0.00200	0.0195*	<0.00200	6.34*	
1,3,5-Trimethylbenzene	mg/kg	27	0.0087	--	0.0113*	0.0511*	<0.00288	4.53*	
TOTAL PETROLEUM HYDROCARBONS									
TPH-GRO	mg/kg	500	--	--	0.266	4.30	<0.200	409	
TPH-DRO	mg/kg	500	--	--	<25.0	63.6	<25.0	802	
TPH-RRO	mg/kg	500	--	--	<100	<100	<100	235	
POLYCYCLIC AROMATIC HYDROCARBONS									
1-Methyl-naphthalene	mg/kg	18	0.006	--	0.00374	0.0192*	0.00315	<0.00201	0.556*
2-Methyl-naphthalene	mg/kg	24	0.019	--	0.00348	0.0292*	0.00497	<0.00201	1.06*
Acenaphthene	mg/kg	360	0.55	--	<0.00067	0.000499	<0.00067	<0.00067	0.0764
Anthracene	mg/kg	1800	5.8	--	<0.00067	0.000363	<0.00067	<0.00067	0.0104
Benzo(a)-anthracene	mg/kg	1.1	0.011	--	<0.00067	<0.00067	<0.00067	<0.00067	0.00302
Benzo(a)-pyrene	mg/kg	0.11	0.24	--	<0.00067	<0.00067	<0.00067	<0.00067	<0.00335
Benzo(b)-fluoranthene	mg/kg	1.1	0.3	--	<0.00067	<0.00067	<0.00067	<0.00067	<0.00335
Benzo(k)-fluoranthene	mg/kg	11	2.9	--	<0.00067	<0.00067	<0.00067	<0.00067	<0.00335
Chrysene	mg/kg	110	9	--	<0.00067	0.000767	<0.00067	<0.00067	0.0107
Dibenzo(a,h)-anthracene	mg/kg	0.11	0.096	--	<0.00067	<0.00067	<0.00067	<0.00067	<0.00335
Fluoranthene	mg/kg	240	8.9	--	<0.00067	0.000506	<0.00067	<0.00067	<0.00335
Fluorene	mg/kg	240	0.54	--	0.00205	0.00629	0.00214	0.128	NA
Indeno(1,2,3-cd)-pyrene	mg/kg	1.1	0.98	--	<0.00067	<0.00067	<0.00067	<0.00067	<0.00335
Naphthalene	mg/kg	2	0.0038	--	<0.00201	0.00539*	<0.00201	<0.00201	0.176*
Pyrene	mg/kg	180	1.3	--	<0.00067	0.000934	<0.00067	<0.00067	0.00917
SOIL SUITABILITY (Inorganics)									
Boron	mg/L	2	--	--	<0.101	<0.100	<0.100	<0.100	<0.101
pH	standard unit	6-8.3	--	--	8.28	8.34	8.16	7.98	7.71
Sodium Adsorption Ratio (SAR)	--	<6	--	--	0.575	1.15	1.24	0.375	0.916
Specific Conductance (EC)	mmhos/cm	<4	--	--	0.408	0.526	0.987	0.306	0.574
METALS									
Arsenic	mg/kg	0.68***	0.29***	2.46***	1.56***	1.55***	NA	NA	2.11***
Barium	mg/kg	15000	82	--	60.1	56.7	NA	NA	123*
Cadmium	mg/kg	71	0.38	--	0.126	0.117	NA	NA	0.349
Copper	mg/kg	3100	46	--	<9.24	<8.51	NA	NA	<8.62
Lead	mg/kg	400	14	--	<9.24	88.9*	NA	NA	15.9*
Nickel	mg/kg	1500	26	--	<9.24	<8.51	NA	NA	<8.62
Selenium	mg/kg	390	0.26	--	<0.0924	0.0953	NA	NA	0.123
Silver	mg/kg	390	0.8	--	<0.0924	<0.0851	NA	NA	<0.0862
Zinc	mg/kg	23000	370	--	<92.4	<85.1	NA	NA	<86.2
Hexavalent Chromium	mg/kg	0.3**	0.00067**	0.1 to 1.0**	<0.488**	<0.497**	NA	NA	<0.244**

COGCC = Colorado Oil and Gas Conservation Commis: NA - Not Analyzed VOCs - Volatile Organic Compounds
mg/kg = milligrams per kilogram
mmhos/cm = millimhos per centimeter RSSLs = Residential Soil Screening Levels
PID = Photoionization Detector GSSLs = Protection of Groundwater Soil Screening Levels
ppm-v = parts per million by volume TPH-GRO = Total Petroleum Hydrocarbons - Gasoline Range Organics
mg/L = milligrams per liter TPH-DRO = Total Petroleum Hydrocarbons - Diesel Range Organics
SAR = Sodium Adsorption Ratio TPH-RRO = Total Petroleum Hydrocarbons - Residual Range Organics

Notes:
Values presented with a less than symbol (<) did not contain concentrations at or above the laboratory reporting limit and/or minimum detection limit
Values presented in **BOLD** exceed COGCC Table 915-1 Regulatory Limits. Values presented with asterisk (*) exceed COGCC Table 915-1 GSSLs.
**Achievable practical quantitative limits for Hexavalent Chromium in soils is in the range of 0.1 to 1 mg/kg.
***Arsenic is naturally occurring in Colorado.





ATTACHMENT A

Photo Log

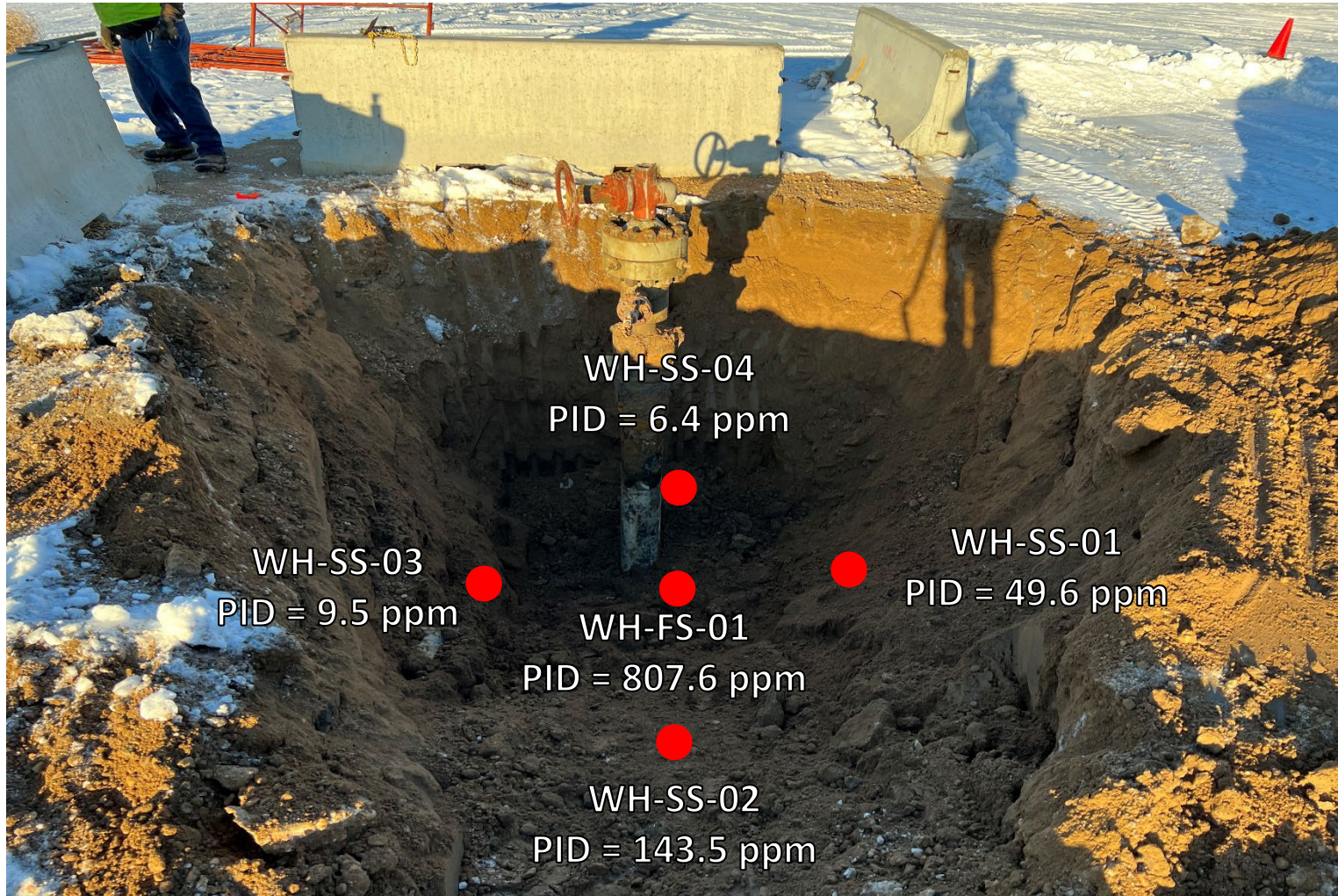
Ocoma G #25-16
API # 05-123-13356
Remediation # 25588

Closure Assessment

January 2023



Wellhead Excavation – 01/16/23



Looking west

Petroleum hydrocarbon odor observed on excavation floor and east sidewall. No staining observed.



ATTACHMENT B

Laboratory Analytical Reports



January 31, 2023

Eagle Environmental Consulting, Inc.

Martin C Eckert III

8000 W 44th Ave

Wheat Ridge CO 80033

Project Name - Noble - Ocoma G #25-16

Project Number - [none]

Attached are your analytical results for Noble - Ocoma G #25-16 received by Origins Laboratory, Inc. January 16, 2023. This project is associated with Origins project number Y301269-01.

The analytical results in the following report were analyzed under the guidelines of EPA Methods. These methods are identified as follows; "SW" are defined in SW-846, "EPA" are defined in 40CFR part 136 and "SM" are defined in the most current revision of Standard Methods For the Examination of Water and Wastewater.

The analytical results apply specifically to the samples and analyses specified per the attached Chain of Custody. As such, this report shall not be reproduced except in full, without the written approval of Origin's laboratory.

Unless otherwise noted, the analytical results for all soil samples are reported on a wet weight basis. All analytical analyses were performed under NELAP guidelines unless noted by a data qualifier.

Any holding time exceedances, deviations from the method specifications or deviations from Origins Laboratory's Standard Operating Procedures are outlined in the case narrative.

Thank you for selecting Origins for your analytical needs. Please contact us with any questions concerning this report, or if we can help with anything at all.

Origins Laboratory, Inc.
303.433.1322
o-squad@oelabinc.com



1725 Elk Place, Denver, CO 80211 | Phone: 303.433.1322 | Fax: 303.265.9645

Eagle Environmental Consulting, Inc.
8000 W 44th Ave
Wheat Ridge CO 80033

Martin C Eckert III
Project Number: [none]
Project: Noble - Ocoma G #25-16

CROSS REFERENCE REPORT

Sample ID	Laboratory ID	Matrix	Date Sampled	Date Received
WH-SS-01@5'	Y301269-01	Soil	January 16, 2023 8:12	01/16/2023 16:45
WH-SS-02@5'	Y301269-02	Soil	January 16, 2023 8:14	01/16/2023 16:45
WH-SS-03@5'	Y301269-03	Soil	January 16, 2023 8:16	01/16/2023 16:45
WH-SS-04@5'	Y301269-04	Soil	January 16, 2023 8:18	01/16/2023 16:45
WH-FS-01@6'	Y301269-05	Soil	January 16, 2023 8:20	01/16/2023 16:45

Chain of Custody Modification Request

On 1/25/2023, Grace Congdon from Eagle Environmental contacted Jordan Bynon via email regarding Y301269 requesting that Table 915 Metals be added to WH-SS-01@5', WH-SS-02@5, and WH-FS-01@6'.

Requested modifications to the chain of custody were made by Jordan Bynon on 1/25/2023.

Origins Laboratory, Inc.



The results in this report apply to the samples analyzed in accordance with the chain of custody document. This analytical report must be reproduced in its entirety.

Eagle Environmental Consulting, Inc.
 8000 W 44th Ave
 Wheat Ridge CO 80033

Martin C Eckert III
 Project Number: [none]
 Project: Noble - Ocoma G #25-16

Origins Laboratory

F-012207-01-R1
 Effective Date: 01/09/12

Sample Receipt Checklist

Origins Work Order: 2301269 Client: Eagle
 Client Project ID: Ocoma G 25-6
 Checklist Completed by: DE HUN Shipped Via: HD
 Date/time completed: 01/16/23 (UPS, FedEx, Hand Delivered, Pick-up, etc.)
 Airbill #: NA
 Matrix(s) Received: (Check all that apply): Soil/Solid Water Other: _____
 Cooler Number/Temperature: 1 / 3.0 °C _____ / _____ °C _____ / _____ °C (Describe)
 Thermometer ID: TCOM

Requirement Description	Yes	No	N/A	Comments (if any)
If samples require cooling, was the temperature between 0°C to ≤ 6°C ⁽¹⁾ ?	X			
Is there ice present (document if blue ice is used)	X			
Are custody seals present on cooler? (if so, document in comments if they are signed and dated, broken or intact)			X	
Are custody seals present on each sample container? (if so, document in comments if they are signed and dated, broken or intact)			X	
Were all samples received intact ⁽¹⁾ ?	X			
Was adequate sample volume provided ⁽¹⁾ ?	X			
Are short holding time analytes or samples with HTs due within 48 hours present ⁽¹⁾ ?		X		
Is a chain-of-custody (COC) present and filled out completely ⁽¹⁾ ?	X			
Does the COC agree with the number and type of sample bottles received ⁽¹⁾ ?	X			
Do the sample IDs on the bottle labels match the COC ⁽¹⁾ ?	X			
Is the COC properly relinquished by the client with date and time recorded ⁽¹⁾ ?	X			
For volatiles in water – is there headspace (> ¼ inch bubble) present? If yes, contact client and note in narrative.			X	
Are samples preserved that require preservation and was it checked ⁽¹⁾ ? (note ID of confirmation instrument used in comments) / (preservation is not confirmed for subcontracted analyses in order to insure sample integrity)/(pH <2 for samples preserved with HNO3, HCL, H2SO4) / (pH >10 for samples preserved with NaAsO2+NaOH, ZnAc+NaOH)			X	
Additional Comments (if any):				

⁽¹⁾If NO, then contact the client before proceeding with analysis and note date/time and person contacted as well as the corrective action to in the additional comments (above) and the case narrative.

Reviewed by (Project Manager) [Signature] Date/Time Reviewed 1/17/23

Origins Laboratory, Inc.

[Signature]

The results in this report apply to the samples analyzed in accordance with the chain of custody document. This analytical report must be reproduced in its entirety.

Eagle Environmental Consulting, Inc.
 8000 W 44th Ave
 Wheat Ridge CO 80033

Martin C Eckert III
 Project Number: [none]
 Project: Noble - Ocoma G #25-16

WH-SS-01@5'
1/16/2023 8:12:00AM

Analyte	Result	Min Detection Limit	Reporting Limit	Units	Dilution	Batch	Prepared	Analyzed	Notes
---------	--------	---------------------	-----------------	-------	----------	-------	----------	----------	-------

Origins Laboratory, Inc.
Y301269-01 (Soil)

Boron (DTPA Sorbitol)

Boron	ND		0.101	mg/L	1	B3A1710	01/17/2023	01/19/2023	
-------	----	--	-------	------	---	---------	------------	------------	--

DRO/ORO by EPA 8015D

Diesel (C10-C28)	ND		25.0	mg/kg	1	B3A1701	01/17/2023	01/19/2023	U
Residual Range Organics (C28-C40)	ND		100	"	"	"	"	"	U

Surrogate: <i>o</i> -Terphenyl	85.9 %		50-150			"	"	"	
--------------------------------	--------	--	--------	--	--	---	---	---	--

GBTEX+TMBs by 8260D

1,2,4-Trimethylbenzene	ND		0.00200	mg/kg	1	B3A1723	01/17/2023	01/19/2023	U
1,3,5-Trimethylbenzene	0.0113		0.00200	"	"	"	"	"	
Benzene	ND		0.00200	"	"	"	"	"	U
Ethylbenzene	ND		0.00200	"	"	"	"	"	U
Toluene	ND		0.00200	"	"	"	"	"	U
Xylenes, total	ND		0.00200	"	"	"	"	"	U
Gasoline Range Hydrocarbons	0.266		0.200	"	"	"	"	"	

Surrogate: 1,2-Dichloroethane-d4	97.1 %		70-130			"	"	"	
Surrogate: Toluene-d8	99.6 %		70-130			"	"	"	

Origins Laboratory, Inc.



The results in this report apply to the samples analyzed in accordance with the chain of custody document. This analytical report must be reproduced in its entirety.

Eagle Environmental Consulting, Inc.
 8000 W 44th Ave
 Wheat Ridge CO 80033

Martin C Eckert III
 Project Number: [none]
 Project: Noble - Ocoma G #25-16

WH-SS-01@5'
1/16/2023 8:12:00AM

Analyte	Result	Min Detection Limit	Reporting Limit	Units	Dilution	Batch	Prepared	Analyzed	Notes
---------	--------	---------------------	-----------------	-------	----------	-------	----------	----------	-------

Origins Laboratory, Inc.
Y301269-01 (Soil)

GBTEX+TMBs by 8260D

Surrogate: 4-Bromofluorobenzene	101 %		70-130			B3A17 23	01/17/2023	01/19/2023	
---------------------------------	-------	--	--------	--	--	-------------	------------	------------	--

Metals by Saturated Paste by EPA 6010

Calcium	1.68		0.499	meq/L	10	[CALC]	01/17/2023	01/19/2023	
Magnesium	ND		0.823	"	"	"	"	"	
Sodium	0.598		0.435	"	"	"	"	"	

PAH by 8270D SIM

1-Methylnaphthalene	0.00374	0.00109	0.00201	mg/Kg	1	L659360	01/19/2023	01/19/2023	
2-Methylnaphthalene	0.00348	0.00194	0.00201	"	"	"	"	"	
Acenaphthene	ND	0.000304	0.00067	"	"	"	"	"	
Anthracene	ND	0.000334	0.00067	"	"	"	"	"	
Benzo(a)anthracene	ND	0.000493	0.00067	"	"	"	"	"	
Benzo(a)pyrene	ND	0.000468	0.00067	"	"	"	"	"	
Benzo(b)fluoranthene	ND	0.000585	0.00067	"	"	"	"	"	
Benzo(k)fluoranthene	ND	0.000437	0.00067	"	"	"	"	"	
Chrysene	ND	0.000624	0.00067	"	"	"	"	"	
Dibenz(a,h)anthracene	ND	0.000614	0.00067	"	"	"	"	"	
Fluoranthene	ND	0.000394	0.00067	"	"	"	"	"	
Fluorene	0.00205	0.000286	0.00067	"	"	"	"	"	

Origins Laboratory, Inc.



The results in this report apply to the samples analyzed in accordance with the chain of custody document. This analytical report must be reproduced in its entirety.

Eagle Environmental Consulting, Inc.
 8000 W 44th Ave
 Wheat Ridge CO 80033

Martin C Eckert III
 Project Number: [none]
 Project: Noble - Ocoma G #25-16

WH-SS-01@5'
1/16/2023 8:12:00AM

Analyte	Result	Min Detection Limit	Reporting Limit	Units	Dilution	Batch	Prepared	Analyzed	Notes
---------	--------	---------------------	-----------------	-------	----------	-------	----------	----------	-------

Waypoint Analytical, LLC.
Y301269-01 (Soil)

PAH by 8270D SIM

Indeno(1,2,3-cd)pyrene	ND	0.000627	0.00067	mg/Kg	1	L659360	01/19/2023	01/19/2023	
Naphthalene	ND	0.00145	0.00201	"	"	"	"	"	
Pyrene	ND	0.000643	0.00067	"	"	"	"	"	

Surrogate: 2-Fluorobiphenyl	45.6 %		33-115			"	"	"	
Surrogate: 4-Terphenyl-d14	53.2 %		33-122			"	"	"	
Surrogate: Nitrobenzene-d5	44.1 %		29-110			"	"	"	

pH in Soil by 9045D

pH	8.28			pH Units	1	B3A1713	01/17/2023	01/18/2023	
----	------	--	--	----------	---	---------	------------	------------	--

SAR by 20B Saturated Paste

SAR	0.575			SAR	1	B3A1705	01/17/2023	01/19/2023	
-----	-------	--	--	-----	---	---------	------------	------------	--

Specific Conductance Mod. 9050A

Specific Conductance (EC)	0.408		0.00500	mmhos/cm	1	B3A1713	01/17/2023	01/18/2023	
---------------------------	-------	--	---------	----------	---	---------	------------	------------	--

Table 915 metals by EPA 6020B

Arsenic	1.56		0.0924	mg/kg	10	B3A2601	01/26/2023	01/26/2023	
Barium	60.1		9.24	"	"	"	"	"	

Origins Laboratory, Inc.



The results in this report apply to the samples analyzed in accordance with the chain of custody document. This analytical report must be reproduced in its entirety.

Eagle Environmental Consulting, Inc.
 8000 W 44th Ave
 Wheat Ridge CO 80033

Martin C Eckert III
 Project Number: [none]
 Project: Noble - Ocoma G #25-16

WH-SS-01@5'

1/16/2023 8:12:00AM

Analyte	Result	Min Detection Limit	Reporting Limit	Units	Dilution	Batch	Prepared	Analyzed	Notes
---------	--------	---------------------	-----------------	-------	----------	-------	----------	----------	-------

Origins Laboratory, Inc.
Y301269-01 (Soil)

Table 915 metals by EPA 6020B

Cadmium	0.126		0.0924	mg/kg	10	B3A2601	01/26/2023	01/26/2023	
Copper	ND		9.24	"	"	"	"	"	
Lead	ND		9.24	"	"	"	"	"	
Nickel	ND		9.24	"	"	"	"	"	
Selenium	ND		0.0924	"	"	"	"	"	
Silver	ND		0.0924	"	"	"	"	"	
Zinc	ND		92.4	"	"	"	"	"	

Total Metals by 7196A

Chromium, Hexavalent	ND	0.488	1	mg/Kg	2	L660889	01/16/2023	01/27/2023	
----------------------	----	-------	---	-------	---	---------	------------	------------	--

Origins Laboratory, Inc.



The results in this report apply to the samples analyzed in accordance with the chain of custody document. This analytical report must be reproduced in its entirety.

Eagle Environmental Consulting, Inc.
 8000 W 44th Ave
 Wheat Ridge CO 80033

Martin C Eckert III
 Project Number: [none]
 Project: Noble - Ocoma G #25-16

WH-SS-02@5'
1/16/2023 8:14:00AM

Analyte	Result	Min Detection Limit	Reporting Limit	Units	Dilution	Batch	Prepared	Analyzed	Notes
---------	--------	---------------------	-----------------	-------	----------	-------	----------	----------	-------

Origins Laboratory, Inc.
Y301269-02 (Soil)

Boron (DTPA Sorbitol)

Boron	ND		0.100	mg/L	1	B3A1710	01/17/2023	01/19/2023	
-------	----	--	-------	------	---	---------	------------	------------	--

DRO/ORO by EPA 8015D

Diesel (C10-C28)	63.6		25.0	mg/kg	1	B3A1701	01/17/2023	01/19/2023	
Residual Range Organics (C28-C40)	ND		100	"	"	"	"	"	U

Surrogate: o-Terphenyl	88.0 %		50-150			"	"	"	
------------------------	--------	--	--------	--	--	---	---	---	--

GBTEX+TMBs by 8260D

1,2,4-Trimethylbenzene	0.0195		0.00200	mg/kg	1	B3A1723	01/17/2023	01/19/2023	
1,3,5-Trimethylbenzene	0.0511		0.00200	"	"	"	"	"	
Benzene	ND		0.00200	"	"	"	"	"	U
Ethylbenzene	ND		0.00200	"	"	"	"	"	U
Toluene	ND		0.00200	"	"	"	"	"	U
Xylenes, total	0.0345		0.00200	"	"	"	"	"	
Gasoline Range Hydrocarbons	4.30		0.200	"	"	"	"	"	

Surrogate: 1,2-Dichloroethane-d4	96.6 %		70-130			"	"	"	
Surrogate: Toluene-d8	99.9 %		70-130			"	"	"	

Origins Laboratory, Inc.



The results in this report apply to the samples analyzed in accordance with the chain of custody document. This analytical report must be reproduced in its entirety.

Eagle Environmental Consulting, Inc.
 8000 W 44th Ave
 Wheat Ridge CO 80033

Martin C Eckert III
 Project Number: [none]
 Project: Noble - Ocoma G #25-16

WH-SS-02@5'
1/16/2023 8:14:00AM

Analyte	Result	Min Detection Limit	Reporting Limit	Units	Dilution	Batch	Prepared	Analyzed	Notes
---------	--------	---------------------	-----------------	-------	----------	-------	----------	----------	-------

Origins Laboratory, Inc.
Y301269-02 (Soil)

GBTEX+TMBs by 8260D

Surrogate: 4-Bromofluorobenzene 103 % 70-130 B3A17 23 01/17/2023 01/19/2023

Metals by Saturated Paste by EPA 6010

Calcium	1.54	0.499	meq/L	10	[CALC]	01/17/2023	01/19/2023
Magnesium	ND	0.823	"	"	"	"	"
Sodium	1.13	0.435	"	"	"	"	"

PAH by 8270D SIM

1-Methylnaphthalene	0.0192	0.00109	0.00201	mg/Kg	1	L659360	01/19/2023	01/19/2023
2-Methylnaphthalene	0.0292	0.00194	0.00201	"	"	"	"	"
Acenaphthene	0.000499	0.000304	0.00067	"	"	"	"	J
Anthracene	0.000363	0.000334	0.00067	"	"	"	"	J
Benzo(a)anthracene	ND	0.000493	0.00067	"	"	"	"	"
Benzo(a)pyrene	ND	0.000468	0.00067	"	"	"	"	"
Benzo(b)fluoranthene	ND	0.000585	0.00067	"	"	"	"	"
Benzo(k)fluoranthene	ND	0.000437	0.00067	"	"	"	"	"
Chrysene	0.000767	0.000624	0.00067	"	"	"	"	"
Dibenz(a,h)anthracene	ND	0.000614	0.00067	"	"	"	"	"
Fluoranthene	0.000506	0.000394	0.00067	"	"	"	"	J
Fluorene	0.00629	0.000286	0.00067	"	"	"	"	"
Indeno(1,2,3-cd)pyrene	ND	0.000627	0.00067	"	"	"	"	"

Origins Laboratory, Inc.



The results in this report apply to the samples analyzed in accordance with the chain of custody document. This analytical report must be reproduced in its entirety.

Eagle Environmental Consulting, Inc.
 8000 W 44th Ave
 Wheat Ridge CO 80033

Martin C Eckert III
 Project Number: [none]
 Project: Noble - Ocoma G #25-16

WH-SS-02@5'
1/16/2023 8:14:00AM

Analyte	Result	Min Detection Limit	Reporting Limit	Units	Dilution	Batch	Prepared	Analyzed	Notes
---------	--------	---------------------	-----------------	-------	----------	-------	----------	----------	-------

Waypoint Analytical, LLC.
Y301269-02 (Soil)

PAH by 8270D SIM

Naphthalene	0.00539	0.00145	0.00201	mg/Kg	1	L659360	01/19/2023	01/19/2023	
Pyrene	0.000934	0.000643	0.00067	"	"	"	"	"	

Surrogate: 2-Fluorobiphenyl	40.9 %		33-115			"	"	"	
Surrogate: 4-Terphenyl-d14	51.2 %		33-122			"	"	"	
Surrogate: Nitrobenzene-d5	40.6 %		29-110			"	"	"	

pH in Soil by 9045D

pH	8.34			pH Units	1	B3A1713	01/17/2023	01/18/2023	
----	------	--	--	----------	---	---------	------------	------------	--

SAR by 20B Saturated Paste

SAR	1.15			SAR	1	B3A1705	01/17/2023	01/19/2023	
-----	------	--	--	-----	---	---------	------------	------------	--

Specific Conductance Mod. 9050A

Specific Conductance (EC)	0.526		0.00500	mmhos/cm	1	B3A1713	01/17/2023	01/18/2023	
---------------------------	-------	--	---------	----------	---	---------	------------	------------	--

Table 915 metals by EPA 6020B

Arsenic	1.55		0.0851	mg/kg	10	B3A2601	01/26/2023	01/26/2023	
Barium	56.7		8.51	"	"	"	"	"	
Cadmium	0.117		0.0851	"	"	"	"	"	

Origins Laboratory, Inc.



The results in this report apply to the samples analyzed in accordance with the chain of custody document. This analytical report must be reproduced in its entirety.

Eagle Environmental Consulting, Inc.
 8000 W 44th Ave
 Wheat Ridge CO 80033

Martin C Eckert III
 Project Number: [none]
 Project: Noble - Ocoma G #25-16

WH-SS-02@5'

1/16/2023 8:14:00AM

Analyte	Result	Min Detection Limit	Reporting Limit	Units	Dilution	Batch	Prepared	Analyzed	Notes
---------	--------	---------------------	-----------------	-------	----------	-------	----------	----------	-------

Origins Laboratory, Inc.
Y301269-02 (Soil)

Table 915 metals by EPA 6020B

Copper	ND		8.51	mg/kg	10	B3A2601	01/26/2023	01/26/2023	
Lead	88.9		8.51	"	"	"	"	"	
Nickel	ND		8.51	"	"	"	"	"	
Selenium	0.0953		0.0851	"	"	"	"	"	
Silver	ND		0.0851	"	"	"	"	"	
Zinc	ND		85.1	"	"	"	"	"	

Total Metals by 7196A

Chromium, Hexavalent	ND	0.497	1.02	mg/Kg	2	L660889	01/16/2023	01/27/2023	
----------------------	----	-------	------	-------	---	---------	------------	------------	--

Origins Laboratory, Inc.



The results in this report apply to the samples analyzed in accordance with the chain of custody document. This analytical report must be reproduced in its entirety.

Eagle Environmental Consulting, Inc.
 8000 W 44th Ave
 Wheat Ridge CO 80033

Martin C Eckert III
 Project Number: [none]
 Project: Noble - Ocoma G #25-16

WH-SS-03@5'
1/16/2023 8:16:00AM

Analyte	Result	Min Detection Limit	Reporting Limit	Units	Dilution	Batch	Prepared	Analyzed	Notes
---------	--------	---------------------	-----------------	-------	----------	-------	----------	----------	-------

Origins Laboratory, Inc.
Y301269-03 (Soil)

Boron (DTPA Sorbitol)

Boron	ND		0.100	mg/L	1	B3A1710	01/17/2023	01/19/2023	
-------	----	--	-------	------	---	---------	------------	------------	--

DRO/ORO by EPA 8015D

Diesel (C10-C28)	ND		25.0	mg/kg	1	B3A1701	01/17/2023	01/19/2023	U
Residual Range Organics (C28-C40)	ND		100	"	"	"	"	"	U


Surrogate: o-Terphenyl	87.5 %		50-150			"	"	"	
------------------------	--------	--	--------	--	--	---	---	---	--

GBTEX+TMBs by 8260D

1,2,4-Trimethylbenzene	ND		0.00200	mg/kg	1	B3A1723	01/17/2023	01/19/2023	U
1,3,5-Trimethylbenzene	0.00288		0.00200	"	"	"	"	"	
Benzene	ND		0.00200	"	"	"	"	"	U
Ethylbenzene	ND		0.00200	"	"	"	"	"	U
Toluene	ND		0.00200	"	"	"	"	"	U
Xylenes, total	ND		0.00200	"	"	"	"	"	U
Gasoline Range Hydrocarbons	ND		0.200	"	"	"	"	"	U

Surrogate: 1,2-Dichloroethane-d4	96.2 %		70-130			"	"	"	
----------------------------------	--------	--	--------	--	--	---	---	---	--

Origins Laboratory, Inc.



The results in this report apply to the samples analyzed in accordance with the chain of custody document. This analytical report must be reproduced in its entirety.

Eagle Environmental Consulting, Inc.
 8000 W 44th Ave
 Wheat Ridge CO 80033

Martin C Eckert III
 Project Number: [none]
 Project: Noble - Ocoma G #25-16

WH-SS-03@5'
1/16/2023 8:16:00AM

Analyte	Result	Min Detection Limit	Reporting Limit	Units	Dilution	Batch	Prepared	Analyzed	Notes
---------	--------	---------------------	-----------------	-------	----------	-------	----------	----------	-------

Origins Laboratory, Inc.
Y301269-03 (Soil)

GBTEX+TMBs by 8260D

Surrogate: Toluene-d8	99.8 %		70-130			B3A17 23	01/17/2023	01/19/2023	
Surrogate: 4-Bromofluorobenzene	102 %		70-130			"	"	"	

Metals by Saturated Paste by EPA 6010

Calcium	4.73		0.499	meq/L	10	[CALC]	01/17/2023	01/19/2023	
Magnesium	1.14		0.823	"	"	"	"	"	
Sodium	2.12		0.435	"	"	"	"	"	

PAH by 8270D SIM

1-Methylnaphthalene	0.00315	0.00109	0.00201	mg/Kg	1	L659360	01/19/2023	01/19/2023	
2-Methylnaphthalene	0.00497	0.00194	0.00201	"	"	"	"	"	
Acenaphthene	ND	0.000304	0.00067	"	"	"	"	"	
Anthracene	ND	0.000334	0.00067	"	"	"	"	"	
Benzo(a)anthracene	ND	0.000493	0.00067	"	"	"	"	"	
Benzo(a)pyrene	ND	0.000468	0.00067	"	"	"	"	"	
Benzo(b)fluoranthene	ND	0.000585	0.00067	"	"	"	"	"	
Benzo(k)fluoranthene	ND	0.000437	0.00067	"	"	"	"	"	
Chrysene	ND	0.000624	0.00067	"	"	"	"	"	
Dibenz(a,h)anthracene	ND	0.000614	0.00067	"	"	"	"	"	
Fluoranthene	ND	0.000394	0.00067	"	"	"	"	"	
Fluorene	0.00214	0.000286	0.00067	"	"	"	"	"	

Origins Laboratory, Inc.



The results in this report apply to the samples analyzed in accordance with the chain of custody document. This analytical report must be reproduced in its entirety.

Eagle Environmental Consulting, Inc.
 8000 W 44th Ave
 Wheat Ridge CO 80033

Martin C Eckert III
 Project Number: [none]
 Project: Noble - Ocoma G #25-16

WH-SS-03@5'
1/16/2023 8:16:00AM

Analyte	Result	Min Detection Limit	Reporting Limit	Units	Dilution	Batch	Prepared	Analyzed	Notes
---------	--------	---------------------	-----------------	-------	----------	-------	----------	----------	-------

Waypoint Analytical, LLC.
Y301269-03 (Soil)

PAH by 8270D SIM

Indeno(1,2,3-cd)pyrene	ND	0.000627	0.00067	mg/Kg	1	L659360	01/19/2023	01/19/2023	
Naphthalene	ND	0.00145	0.00201	"	"	"	"	"	
Pyrene	ND	0.000643	0.00067	"	"	"	"	"	

Surrogate: 2-Fluorobiphenyl	47.7 %		33-115			"	"	"	
Surrogate: 4-Terphenyl-d14	53.2 %		33-122			"	"	"	
Surrogate: Nitrobenzene-d5	45.8 %		29-110			"	"	"	

pH in Soil by 9045D

pH	8.16			pH Units	1	B3A1713	01/17/2023	01/18/2023	
----	------	--	--	----------	---	---------	------------	------------	--

SAR by 20B Saturated Paste

SAR	1.24			SAR	1	B3A1705	01/17/2023	01/19/2023	
-----	------	--	--	-----	---	---------	------------	------------	--

Specific Conductance Mod. 9050A

Specific Conductance (EC)	0.987		0.00500	mmhos/cm	1	B3A1713	01/17/2023	01/18/2023	
---------------------------	-------	--	---------	----------	---	---------	------------	------------	--

Origins Laboratory, Inc.



The results in this report apply to the samples analyzed in accordance with the chain of custody document. This analytical report must be reproduced in its entirety.

Eagle Environmental Consulting, Inc.
 8000 W 44th Ave
 Wheat Ridge CO 80033

Martin C Eckert III
 Project Number: [none]
 Project: Noble - Ocoma G #25-16

WH-SS-04@5'
1/16/2023 8:18:00AM

Analyte	Result	Min Detection Limit	Reporting Limit	Units	Dilution	Batch	Prepared	Analyzed	Notes
---------	--------	---------------------	-----------------	-------	----------	-------	----------	----------	-------

Origins Laboratory, Inc.
Y301269-04 (Soil)

Boron (DTPA Sorbitol)

Boron	ND		0.100	mg/L	1	B3A1710	01/17/2023	01/19/2023	
-------	----	--	-------	------	---	---------	------------	------------	--

DRO/ORO by EPA 8015D

Diesel (C10-C28)	ND		25.0	mg/kg	1	B3A1701	01/17/2023	01/19/2023	U
Residual Range Organics (C28-C40)	ND		100	"	"	"	"	"	U

Surrogate: *o*-Terphenyl 86.6 % 50-150 " " "

GBTEX+TMBs by 8260D

1,2,4-Trimethylbenzene	ND		0.00200	mg/kg	1	B3A1723	01/17/2023	01/19/2023	U
1,3,5-Trimethylbenzene	ND		0.00200	"	"	"	"	"	U
Benzene	ND		0.00200	"	"	"	"	"	U
Ethylbenzene	ND		0.00200	"	"	"	"	"	U
Toluene	ND		0.00200	"	"	"	"	"	U
Xylenes, total	ND		0.00200	"	"	"	"	"	U
Gasoline Range Hydrocarbons	ND		0.200	"	"	"	"	"	U

Surrogate: 1,2-Dichloroethane-d4 96.3 % 70-130 " " "

Origins Laboratory, Inc.



The results in this report apply to the samples analyzed in accordance with the chain of custody document. This analytical report must be reproduced in its entirety.

Eagle Environmental Consulting, Inc.
 8000 W 44th Ave
 Wheat Ridge CO 80033

Martin C Eckert III
 Project Number: [none]
 Project: Noble - Ocoma G #25-16

WH-SS-04@5'
1/16/2023 8:18:00AM

Analyte	Result	Min Detection Limit	Reporting Limit	Units	Dilution	Batch	Prepared	Analyzed	Notes
---------	--------	---------------------	-----------------	-------	----------	-------	----------	----------	-------

Origins Laboratory, Inc.
Y301269-04 (Soil)

GBTEX+TMBs by 8260D

Surrogate: Toluene-d8	101 %		70-130			B3A17 23	01/17/2023	01/19/2023	
Surrogate: 4-Bromofluorobenzene	101 %		70-130			"	"	"	

Metals by Saturated Paste by EPA 6010

Calcium	1.79		0.499	meq/L	10	[CALC]	01/17/2023	01/19/2023	
Magnesium	ND		0.823	"	"	"	"	"	
Sodium	ND		0.435	"	"	"	"	"	

PAH by 8270D SIM

1-Methylnaphthalene	ND	0.00109	0.00201	mg/Kg	1	L659360	01/19/2023	01/19/2023	
2-Methylnaphthalene	ND	0.00194	0.00201	"	"	"	"	"	
Acenaphthene	ND	0.000304	0.00067	"	"	"	"	"	
Anthracene	ND	0.000334	0.00067	"	"	"	"	"	
Benzo(a)anthracene	ND	0.000493	0.00067	"	"	"	"	"	
Benzo(a)pyrene	ND	0.000468	0.00067	"	"	"	"	"	
Benzo(b)fluoranthene	ND	0.000585	0.00067	"	"	"	"	"	
Benzo(k)fluoranthene	ND	0.000437	0.00067	"	"	"	"	"	
Chrysene	ND	0.000624	0.00067	"	"	"	"	"	
Dibenz(a,h)anthracene	ND	0.000614	0.00067	"	"	"	"	"	
Fluoranthene	ND	0.000394	0.00067	"	"	"	"	"	

Origins Laboratory, Inc.



The results in this report apply to the samples analyzed in accordance with the chain of custody document. This analytical report must be reproduced in its entirety.

Eagle Environmental Consulting, Inc.
 8000 W 44th Ave
 Wheat Ridge CO 80033

Martin C Eckert III
 Project Number: [none]
 Project: Noble - Ocoma G #25-16

WH-SS-04@5'
1/16/2023 8:18:00AM

Analyte	Result	Min Detection Limit	Reporting Limit	Units	Dilution	Batch	Prepared	Analyzed	Notes
---------	--------	---------------------	-----------------	-------	----------	-------	----------	----------	-------

Waypoint Analytical, LLC.
Y301269-04 (Soil)

PAH by 8270D SIM

Fluorene	0.00051	0.000286	0.00067	mg/Kg	1	L659360	01/19/2023	01/19/2023	J
Indeno(1,2,3-cd)pyrene	ND	0.000627	0.00067	"	"	"	"	"	
Naphthalene	ND	0.00145	0.00201	"	"	"	"	"	
Pyrene	ND	0.000643	0.00067	"	"	"	"	"	

Surrogate: 2-Fluorobiphenyl	44.5 %		33-115			"	"	"	
Surrogate: 4-Terphenyl-d14	55.8 %		33-122			"	"	"	
Surrogate: Nitrobenzene-d5	44.5 %		29-110			"	"	"	

pH in Soil by 9045D

pH	7.98			pH Units	1	B3A1713	01/17/2023	01/18/2023	
----	------	--	--	----------	---	---------	------------	------------	--

SAR by 20B Saturated Paste

SAR	0.375			SAR	1	B3A1705	01/17/2023	01/19/2023	
-----	-------	--	--	-----	---	---------	------------	------------	--

Specific Conductance Mod. 9050A

Specific Conductance (EC)	0.306		0.00500	mmhos/cm	1	B3A1713	01/17/2023	01/18/2023	
---------------------------	-------	--	---------	----------	---	---------	------------	------------	--

Origins Laboratory, Inc.



The results in this report apply to the samples analyzed in accordance with the chain of custody document. This analytical report must be reproduced in its entirety.

Eagle Environmental Consulting, Inc.
 8000 W 44th Ave
 Wheat Ridge CO 80033

Martin C Eckert III
 Project Number: [none]
 Project: Noble - Ocoma G #25-16

WH-FS-01@6'
1/16/2023 8:20:00AM

Analyte	Result	Min Detection Limit	Reporting Limit	Units	Dilution	Batch	Prepared	Analyzed	Notes
---------	--------	---------------------	-----------------	-------	----------	-------	----------	----------	-------

Origins Laboratory, Inc.
Y301269-05 (Soil)

Boron (DTPA Sorbitol)

Boron	ND		0.101	mg/L	1	B3A1710	01/17/2023	01/19/2023	
-------	----	--	-------	------	---	---------	------------	------------	--

DRO/ORO by EPA 8015D

Diesel (C10-C28)	802		25.0	mg/kg	1	B3A1701	01/17/2023	01/19/2023	
Residual Range Organics (C28-C40)	235		100	"	"	"	"	"	

Surrogate: o-Terphenyl	87.3 %		50-150			"	"	"	
------------------------	--------	--	--------	--	--	---	---	---	--

GBTEX+TMBs by 8260D

1,2,4-Trimethylbenzene	6.34		0.0500	mg/kg	25	B3A1723	01/17/2023	01/19/2023	
1,3,5-Trimethylbenzene	4.53		0.0500	"	"	"	"	"	
Benzene	ND		0.00200	"	1	"	"	01/19/2023	U
Ethylbenzene	ND		0.00200	"	"	"	"	"	U
Toluene	0.00534		0.00200	"	"	"	"	"	
Xylenes, total	11.2		0.0500	"	25	"	"	"	
Gasoline Range Hydrocarbons	409		50.0	"	250	"	"	01/20/2023	

Surrogate: 1,2-Dichloroethane-d4	97.4 %		70-130			"	"	01/19/2023	
Surrogate: Toluene-d8	91.0 %		70-130			"	"	"	
Surrogate: 4-Bromofluorobenzene	164 %		70-130			"	"	"	S-GC

Origins Laboratory, Inc.



The results in this report apply to the samples analyzed in accordance with the chain of custody document. This analytical report must be reproduced in its entirety.

Eagle Environmental Consulting, Inc.
 8000 W 44th Ave
 Wheat Ridge CO 80033

Martin C Eckert III
 Project Number: [none]
 Project: Noble - Ocoma G #25-16

WH-FS-01@6'
1/16/2023 8:20:00AM

Analyte	Result	Min Detection Limit	Reporting Limit	Units	Dilution	Batch	Prepared	Analyzed	Notes
---------	--------	---------------------	-----------------	-------	----------	-------	----------	----------	-------

Origins Laboratory, Inc.
Y301269-05 (Soil)

Metals by Saturated Paste by EPA 6010

Calcium	3.03		0.499	meq/L	10	[CALC]	01/17/2023	01/19/2023	
Magnesium	ND		0.823	"	"	"	"	"	
Sodium	1.23		0.435	"	"	"	"	"	

PAH by 8270D SIM

1-Methylnaphthalene	0.556	0.00549	0.0101	mg/Kg	5	L659360	01/19/2023	01/19/2023	
2-Methylnaphthalene	1.06	0.00972	0.0101	"	"	"	"	"	
Acenaphthene	0.0764	0.00152	0.00335	"	"	"	"	"	
Anthracene	0.0104	0.00167	0.00335	"	"	"	"	"	
Benzo(a)anthracene	0.00302	0.00247	0.00335	"	"	"	"	"	J
Benzo(a)pyrene	ND	0.00234	0.00335	"	"	"	"	"	
Benzo(b)fluoranthene	ND	0.00293	0.00335	"	"	"	"	"	
Benzo(k)fluoranthene	ND	0.00219	0.00335	"	"	"	"	"	
Chrysene	0.0107	0.00312	0.00335	"	"	"	"	"	
Dibenz(a,h)anthracene	ND	0.00307	0.00335	"	"	"	"	"	
Fluoranthene	ND	0.00197	0.00335	"	"	"	"	"	
Fluorene	0.128	0.00143	0.00335	"	"	"	"	"	
Indeno(1,2,3-cd)pyrene	ND	0.00314	0.00335	"	"	"	"	"	
Naphthalene	0.176	0.0073	0.0101	"	"	"	"	"	
Pyrene	0.00917	0.00322	0.00335	"	"	"	"	"	
Surrogate: 2-Fluorobiphenyl	54.2 %		33-115			"	"	"	
Surrogate: 4-Terphenyl-d14	56.9 %		33-122			"	"	"	

Origins Laboratory, Inc.



The results in this report apply to the samples analyzed in accordance with the chain of custody document. This analytical report must be reproduced in its entirety.

Eagle Environmental Consulting, Inc.
 8000 W 44th Ave
 Wheat Ridge CO 80033

Martin C Eckert III
 Project Number: [none]
 Project: Noble - Ocoma G #25-16

WH-FS-01@6'

1/16/2023 8:20:00AM

Analyte	Result	Min Detection Limit	Reporting Limit	Units	Dilution	Batch	Prepared	Analyzed	Notes
---------	--------	---------------------	-----------------	-------	----------	-------	----------	----------	-------

Waypoint Analytical, LLC.
Y301269-05 (Soil)

PAH by 8270D SIM

Surrogate: Nitrobenzene-d5	44 %		29-110			L6593 60	01/19/2023	01/19/2023	
----------------------------	------	--	--------	--	--	-------------	------------	------------	--

pH in Soil by 9045D

pH	7.71			pH Units	1	B3A1713	01/17/2023	01/18/2023	
----	------	--	--	----------	---	---------	------------	------------	--

SAR by 20B Saturated Paste

SAR	0.916			SAR	1	B3A1705	01/17/2023	01/19/2023	
-----	-------	--	--	-----	---	---------	------------	------------	--

Specific Conductance Mod. 9050A

Specific Conductance (EC)	0.574		0.00500	mmhos/cm	1	B3A1713	01/17/2023	01/18/2023	
---------------------------	-------	--	---------	----------	---	---------	------------	------------	--

Table 915 metals by EPA 6020B

Arsenic	2.11		0.0862	mg/kg	10	B3A2601	01/26/2023	01/26/2023	
Barium	89.1		8.62	"	"	"	"	"	
Cadmium	0.349		0.0862	"	"	"	"	"	
Copper	ND		8.62	"	"	"	"	"	
Lead	15.9		8.62	"	"	"	"	"	
Nickel	ND		8.62	"	"	"	"	"	
Selenium	0.123		0.0862	"	"	"	"	"	
Silver	ND		0.0862	"	"	"	"	"	

Origins Laboratory, Inc.



The results in this report apply to the samples analyzed in accordance with the chain of custody document. This analytical report must be reproduced in its entirety.

Eagle Environmental Consulting, Inc.
 8000 W 44th Ave
 Wheat Ridge CO 80033

Martin C Eckert III
 Project Number: [none]
 Project: Noble - Ocoma G #25-16

WH-FS-01@6'
1/16/2023 8:20:00AM

Analyte	Result	Min Detection Limit	Reporting Limit	Units	Dilution	Batch	Prepared	Analyzed	Notes
---------	--------	---------------------	-----------------	-------	----------	-------	----------	----------	-------

Origins Laboratory, Inc.
Y301269-05 (Soil)

Table 915 metals by EPA 6020B

Zinc	ND		86.2	mg/kg	10	B3A2601	01/26/2023	01/26/2023	
------	----	--	------	-------	----	---------	------------	------------	--

Total Metals by 7196A

Chromium, Hexavalent	ND	0.244	0.5	mg/Kg	1	L660889	01/16/2023	01/27/2023	
----------------------	----	-------	-----	-------	---	---------	------------	------------	--

Origins Laboratory, Inc.



The results in this report apply to the samples analyzed in accordance with the chain of custody document. This analytical report must be reproduced in its entirety.

Eagle Environmental Consulting, Inc.
 8000 W 44th Ave
 Wheat Ridge CO 80033

Martin C Eckert III
 Project Number: [none]
 Project: Noble - Ocoma G #25-16

Extractable Petroleum Hydrocarbons by 8015D - Quality Control
Origins Laboratory, Inc.

Analyte	Result	Reporting Limit	Units	Spike Level	Source Result	%REC	%REC Limits	RPD	RPD Limit	Notes
Batch B3A1701 - EPA 3580										
Blank (B3A1701-BLK1)										
					Prepared: 01/17/2023 Analyzed: 01/17/2023					
Diesel (C10-C28)	ND	25.0	mg/kg							U
Residual Range Organics (C28-C40)	ND	100	"							U
Surrogate: o-Terphenyl	31		"	24.9		126	50-150			

Origins Laboratory, Inc.



The results in this report apply to the samples analyzed in accordance with the chain of custody document. This analytical report must be reproduced in its entirety.

Eagle Environmental Consulting, Inc.
 8000 W 44th Ave
 Wheat Ridge CO 80033

Martin C Eckert III
 Project Number: [none]
 Project: Noble - Ocoma G #25-16

Extractable Petroleum Hydrocarbons by 8015D - Quality Control
Origins Laboratory, Inc.

Analyte	Result	Reporting Limit	Units	Spike Level	Source Result	%REC	%REC Limits	RPD	RPD Limit	Notes
---------	--------	-----------------	-------	-------------	---------------	------	-------------	-----	-----------	-------

Batch B3A1701 - EPA 3580

LCS (B3A1701-BS1)

Prepared: 01/17/2023 Analyzed: 01/17/2023

Diesel (C10-C28)	1020	50.0	mg/kg	1000		102	70-130			
Residual Range Organics (C28-C40)	1070	200	"	1000		107	70-130			
Surrogate: o-Terphenyl	49		"	49.8		98.7	50-150			

Origins Laboratory, Inc.



The results in this report apply to the samples analyzed in accordance with the chain of custody document. This analytical report must be reproduced in its entirety.

Eagle Environmental Consulting, Inc.
 8000 W 44th Ave
 Wheat Ridge CO 80033

Martin C Eckert III
 Project Number: [none]
 Project: Noble - Ocoma G #25-16

Extractable Petroleum Hydrocarbons by 8015D - Quality Control
Origins Laboratory, Inc.

Analyte	Result	Reporting Limit	Units	Spike Level	Source Result	%REC	%REC Limits	RPD	RPD Limit	Notes
---------	--------	-----------------	-------	-------------	---------------	------	-------------	-----	-----------	-------

Batch B3A1701 - EPA 3580

Matrix Spike (B3A1701-MS1)	Source: Y301260-01			Prepared: 01/17/2023 Analyzed: 01/17/2023						
Diesel (C10-C28)	995	50.0	mg/kg	1000	ND	99.5	70-130			
Residual Range Organics (C28-C40)	1060	200	"	1000	ND	106	70-130			
Surrogate: o-Terphenyl	55		"	49.8		110	50-150			

Origins Laboratory, Inc.



The results in this report apply to the samples analyzed in accordance with the chain of custody document. This analytical report must be reproduced in its entirety.

Eagle Environmental Consulting, Inc.
 8000 W 44th Ave
 Wheat Ridge CO 80033

Martin C Eckert III
 Project Number: [none]
 Project: Noble - Ocoma G #25-16

Extractable Petroleum Hydrocarbons by 8015D - Quality Control
Origins Laboratory, Inc.

Analyte	Result	Reporting Limit	Units	Spike Level	Source Result	%REC	%REC Limits	RPD	RPD Limit	Notes
---------	--------	-----------------	-------	-------------	---------------	------	-------------	-----	-----------	-------

Batch B3A1701 - EPA 3580

Matrix Spike Dup (B3A1701-MSD1)	Source: Y301260-01		Prepared: 01/17/2023 Analyzed: 01/17/2023							
Diesel (C10-C28)	1030	50.0	mg/kg	1000	ND	103	70-130	3.72	35	
Residual Range Organics (C28-C40)	1090	200	"	1000	ND	109	70-130	2.46	35	
<i>Surrogate: o-Terphenyl</i>	48		"	49.8		96.4	50-150			

Origins Laboratory, Inc.



The results in this report apply to the samples analyzed in accordance with the chain of custody document. This analytical report must be reproduced in its entirety.

Eagle Environmental Consulting, Inc.
 8000 W 44th Ave
 Wheat Ridge CO 80033

Martin C Eckert III
 Project Number: [none]
 Project: Noble - Ocoma G #25-16

Extractable Petroleum Hydrocarbons by 8015D - Quality Control
Origins Laboratory, Inc.

Analyte	Result	Reporting Limit	Units	Spike Level	Source Result	%REC	%REC Limits	RPD	RPD Limit	Notes
---------	--------	-----------------	-------	-------------	---------------	------	-------------	-----	-----------	-------

Batch B3A1723 - EPA 5030 (soil)

Blank (B3A1723-BLK1)

Prepared: 01/17/2023 Analyzed: 01/19/2023

1,2,4-Trimethylbenzene	ND	0.00200	mg/kg							U
1,3,5-Trimethylbenzene	ND	0.00200	"							U
Benzene	ND	0.00200	"							U
Ethylbenzene	ND	0.00200	"							U
Naphthalene	ND	0.00380	"							U
Toluene	ND	0.00200	"							U
Xylenes, total	ND	0.00200	"							U
Gasoline Range Hydrocarbons	ND	0.200	"							U
Surrogate: 1,2-Dichloroethane-d4	0.12		"	0.125	96.2		70-130			
Surrogate: Toluene-d8	0.13		"	0.125	101		70-130			
Surrogate: 4-Bromofluorobenzene	0.13		"	0.125	103		70-130			

Origins Laboratory, Inc.



The results in this report apply to the samples analyzed in accordance with the chain of custody document. This analytical report must be reproduced in its entirety.

Eagle Environmental Consulting, Inc.
 8000 W 44th Ave
 Wheat Ridge CO 80033

Martin C Eckert III
 Project Number: [none]
 Project: Noble - Ocoma G #25-16

Volatile Organic Compounds by GC/MS SW846 8260D - Quality Control
Origins Laboratory, Inc.

Analyte	Result	Reporting Limit	Units	Spike Level	Source Result	%REC	%REC Limits	RPD	RPD Limit	Notes
---------	--------	-----------------	-------	-------------	---------------	------	-------------	-----	-----------	-------

Batch B3A1723 - EPA 5030 (soil)

LCS (B3A1723-BS1)

Prepared: 01/17/2023 Analyzed: 01/19/2023

1,2,4-Trimethylbenzene	0.0955	0.00200	mg/kg	0.100		95.5	70-130			
1,3,5-Trimethylbenzene	0.0950	0.00200	"	0.100		95.0	70-130			
Benzene	0.0852	0.00200	"	0.100		85.2	70-130			
Ethylbenzene	0.0940	0.00200	"	0.100		94.0	70-130			
Naphthalene	0.0931	0.00380	"	0.100		93.1	70-130			
Toluene	0.0887	0.00200	"	0.100		88.7	70-130			
o-Xylene	0.0928	0.00200	"	0.100		92.8	70-130			
m,p-Xylene	0.223	0.00400	"	0.200		112	70-130			
Surrogate: 1,2-Dichloroethane-d4	0.12		"	0.125		97.1	70-130			
Surrogate: Toluene-d8	0.13		"	0.125		103	70-130			
Surrogate: 4-Bromofluorobenzene	0.12		"	0.125		98.3	70-130			

Origins Laboratory, Inc.



The results in this report apply to the samples analyzed in accordance with the chain of custody document. This analytical report must be reproduced in its entirety.

Eagle Environmental Consulting, Inc.
 8000 W 44th Ave
 Wheat Ridge CO 80033

Martin C Eckert III
 Project Number: [none]
 Project: Noble - Ocoma G #25-16

Volatile Organic Compounds by GC/MS SW846 8260D - Quality Control
Origins Laboratory, Inc.

Analyte	Result	Reporting Limit	Units	Spike Level	Source Result	%REC	%REC Limits	RPD	RPD Limit	Notes
---------	--------	-----------------	-------	-------------	---------------	------	-------------	-----	-----------	-------

Batch B3A1723 - EPA 5030 (soil)

Matrix Spike (B3A1723-MS1)	Source: Y301269-01			Prepared: 01/17/2023 Analyzed: 01/19/2023						
1,2,4-Trimethylbenzene	0.0768	0.00200	mg/kg	0.100	0.000820	76.0	70-130			
1,3,5-Trimethylbenzene	0.103	0.00200	"	0.100	0.0113	91.8	70-130			
Benzene	0.0774	0.00200	"	0.100	ND	77.4	70-130			
Ethylbenzene	0.0823	0.00200	"	0.100	ND	82.3	70-130			
Naphthalene	0.0858	0.00380	"	0.100	0.00380	82.0	70-130			
Toluene	0.0795	0.00200	"	0.100	ND	79.5	70-130			
o-Xylene	0.0842	0.00200	"	0.100	0.000800	83.4	70-130			
m,p-Xylene	0.184	0.00400	"	0.200	ND	92.2	70-130			
Surrogate: 1,2-Dichloroethane-d4	0.12		"	0.125		97.8	70-130			
Surrogate: Toluene-d8	0.13		"	0.125		102	70-130			
Surrogate: 4-Bromofluorobenzene	0.12		"	0.125		98.9	70-130			

Origins Laboratory, Inc.



The results in this report apply to the samples analyzed in accordance with the chain of custody document. This analytical report must be reproduced in its entirety.

Eagle Environmental Consulting, Inc.
 8000 W 44th Ave
 Wheat Ridge CO 80033

Martin C Eckert III
 Project Number: [none]
 Project: Noble - Ocoma G #25-16

Volatile Organic Compounds by GC/MS SW846 8260D - Quality Control
Origins Laboratory, Inc.

Analyte	Result	Reporting Limit	Units	Spike Level	Source Result	%REC	%REC Limits	RPD	RPD Limit	Notes
---------	--------	-----------------	-------	-------------	---------------	------	-------------	-----	-----------	-------

Batch B3A1723 - EPA 5030 (soil)

Matrix Spike Dup (B3A1723-MSD1)	Source: Y301269-01			Prepared: 01/17/2023 Analyzed: 01/19/2023						
1,2,4-Trimethylbenzene	0.0783	0.00200	mg/kg	0.100	0.000820	77.5	70-130	1.91	20	
1,3,5-Trimethylbenzene	0.114	0.00200	"	0.100	0.0113	103	70-130	10.0	20	
Benzene	0.0825	0.00200	"	0.100	ND	82.5	70-130	6.45	20	
Ethylbenzene	0.0902	0.00200	"	0.100	ND	90.2	70-130	9.13	20	
Naphthalene	0.0959	0.00380	"	0.100	0.00380	92.1	70-130	11.1	20	
Toluene	0.0848	0.00200	"	0.100	ND	84.8	70-130	6.35	20	
o-Xylene	0.0926	0.00200	"	0.100	0.000800	91.8	70-130	9.50	20	
m,p-Xylene	0.197	0.00400	"	0.200	ND	98.4	70-130	6.50	20	
Surrogate: 1,2-Dichloroethane-d4	0.12		"	0.125		97.2	70-130			
Surrogate: Toluene-d8	0.13		"	0.125		102	70-130			
Surrogate: 4-Bromofluorobenzene	0.13		"	0.125		101	70-130			

Origins Laboratory, Inc.



The results in this report apply to the samples analyzed in accordance with the chain of custody document. This analytical report must be reproduced in its entirety.

Eagle Environmental Consulting, Inc.
 8000 W 44th Ave
 Wheat Ridge CO 80033

Martin C Eckert III
 Project Number: [none]
 Project: Noble - Ocoma G #25-16

Volatile Organic Compounds by GC/MS SW846 8260D - Quality Control
Origins Laboratory, Inc.

Analyte	Result	Reporting Limit	Units	Spike Level	Source Result	%REC	%REC Limits	RPD	RPD Limit	Notes
---------	--------	-----------------	-------	-------------	---------------	------	-------------	-----	-----------	-------

Metals by EPA 6000/7000 Series Methods - Quality Control
Origins Laboratory, Inc.

Analyte	Result	Reporting Limit	Units	Spike Level	Source Result	%REC	%REC Limits	RPD	RPD Limit	Notes
---------	--------	-----------------	-------	-------------	---------------	------	-------------	-----	-----------	-------

Batch B3A2601 - EPA 3050B

Blank (B3A2601-BLK1)

Prepared: 01/26/2023 Analyzed: 01/26/2023

Arsenic	ND	0.000100	mg/kg							
Barium	ND	0.0100	"							
Cadmium	ND	0.000100	"							
Copper	ND	0.0100	"							
Lead	ND	0.0100	"							
Nickel	ND	0.0100	"							
Selenium	ND	0.000100	"							
Silver	ND	0.000100	"							
Zinc	ND	0.100	"							

LCS (B3A2601-BS1)

Prepared: 01/26/2023 Analyzed: 01/26/2023

Arsenic	0.0482	0.000100	mg/kg	0.0500		96.3	80-120			
Barium	4.83	0.0100	"	5.00		96.6	80-120			
Cadmium	0.0495	0.000100	"	0.0500		99.0	80-120			
Copper	0.487	0.0100	"	0.500		97.4	80-120			
Lead	0.0499	0.0100	"	0.0500		99.7	80-120			
Nickel	0.0491	0.0100	"	0.0500		98.1	80-120			
Selenium	0.0454	0.000100	"	0.0500		90.9	80-120			
Silver	0.0519	0.000100	"	0.0500		104	80-120			
Zinc	0.467	0.100	"	0.500		93.5	80-120			

Matrix Spike (B3A2601-MS1)

Source: Y301398-01

Prepared: 01/26/2023 Analyzed: 01/26/2023

Origins Laboratory, Inc.



The results in this report apply to the samples analyzed in accordance with the chain of custody document. This analytical report must be reproduced in its entirety.

Eagle Environmental Consulting, Inc.
 8000 W 44th Ave
 Wheat Ridge CO 80033

Martin C Eckert III
 Project Number: [none]
 Project: Noble - Ocoma G #25-16

Metals by EPA 6000/7000 Series Methods - Quality Control
Origins Laboratory, Inc.

Analyte	Result	Reporting Limit	Units	Spike Level	Source Result	%REC	%REC Limits	RPD	RPD Limit	Notes
---------	--------	-----------------	-------	-------------	---------------	------	-------------	-----	-----------	-------

Batch B3A2601 - EPA 3050B

Matrix Spike (B3A2601-MS1)		Source: Y301398-01			Prepared: 01/26/2023 Analyzed: 01/26/2023					
Arsenic	11.0	0.0912	mg/kg	4.56	9.74	27.8	75-125			QM-07
Barium	629	9.12	"	456	251	82.9	75-125			
Cadmium	5.08	0.0912	"	4.56	0.180	107	75-125			
Copper	56.0	9.12	"	45.6	17.2	85.1	75-125			
Lead	14.7	9.12	"	4.56	13.3	29.6	75-125			QM-07
Nickel	14.6	9.12	"	4.56	16.1	NR	75-125			QM-07
Selenium	4.91	0.0912	"	4.56	0.252	102	75-125			
Silver	4.91	0.0912	"	4.56	0.0446	107	75-125			
Zinc	82.9	91.2	"	45.6	50.5	71.0	75-125			QM-07

Matrix Spike Dup (B3A2601-MSD1)		Source: Y301398-01			Prepared: 01/26/2023 Analyzed: 01/26/2023					
Arsenic	11.0	0.0890	mg/kg	4.45	9.74	28.3	75-125	0.0965	20	QM-07
Barium	693	8.90	"	445	251	99.2	75-125	9.60	20	
Cadmium	5.33	0.0890	"	4.45	0.180	116	75-125	4.89	20	
Copper	60.8	8.90	"	44.5	17.2	97.9	75-125	8.11	20	
Lead	15.0	8.90	"	4.45	13.3	36.2	75-125	1.75	20	QM-07
Nickel	17.5	8.90	"	4.45	16.1	31.2	75-125	18.2	20	QM-07
Selenium	4.84	0.0890	"	4.45	0.252	103	75-125	1.36	20	
Silver	5.36	0.0890	"	4.45	0.0446	119	75-125	8.62	20	
Zinc	83.0	89.0	"	44.5	50.5	73.1	75-125	0.178	20	QM-07

Origins Laboratory, Inc.



The results in this report apply to the samples analyzed in accordance with the chain of custody document. This analytical report must be reproduced in its entirety.

Eagle Environmental Consulting, Inc.
 8000 W 44th Ave
 Wheat Ridge CO 80033

Martin C Eckert III
 Project Number: [none]
 Project: Noble - Ocoma G #25-16

Classical Chemistry Parameters - Quality Control
Origins Laboratory, Inc.

Analyte	Result	Reporting Limit	Units	Spike Level	Source Result	%REC	%REC Limits	RPD	RPD Limit	Notes
---------	--------	-----------------	-------	-------------	---------------	------	-------------	-----	-----------	-------

Batch B3A1705 - Saturated Paste Metals

Blank (B3A1705-BLK1)

Prepared: 01/17/2023 Analyzed: 01/19/2023

SAR	0.00		SAR							
Calcium PPM	ND	10.0	mg/L							
Magnesium PPM	ND	10.0	"							
Sodium PPM	ND	10.0	"							

Duplicate (B3A1705-DUP1)

Source: Y301239-01

Prepared: 01/17/2023 Analyzed: 01/19/2023

Calcium PPM	58.5	10.0	mg/L		58.0			0.910	50	
SAR	0.00		SAR		0.303			200	200	
Magnesium PPM	18.1	10.0	mg/L		18.0			0.699	50	
Sodium PPM	9.64	10.0	"		10.3			6.68	50	

Batch B3A1710 - DTPA Sorbitol Preparation

Blank (B3A1710-BLK1)

Prepared: 01/17/2023 Analyzed: 01/19/2023

Boron	ND	0.100	mg/L							
-------	----	-------	------	--	--	--	--	--	--	--

Duplicate (B3A1710-DUP1)

Source: Y301252-05

Prepared: 01/17/2023 Analyzed: 01/19/2023

Boron	0.518	0.100	mg/L		0.478			7.99	50	
-------	-------	-------	------	--	-------	--	--	------	----	--

Origins Laboratory, Inc.



The results in this report apply to the samples analyzed in accordance with the chain of custody document. This analytical report must be reproduced in its entirety.

Eagle Environmental Consulting, Inc.
 8000 W 44th Ave
 Wheat Ridge CO 80033

Martin C Eckert III
 Project Number: [none]
 Project: Noble - Ocoma G #25-16

Saturated Paste - Quality Control
Origins Laboratory, Inc.

Analyte	Result	Reporting Limit	Units	Spike Level	Source Result	%REC	%REC Limits	RPD	RPD Limit	Notes
Batch B3A1713 - Saturated Paste pH/EC										
Blank (B3A1713-BLK1)					Prepared: 01/17/2023 Analyzed: 01/18/2023					
Specific Conductance (EC)	ND	0.00500	mmhos/cm							
Duplicate (B3A1713-DUP1)					Source: Y301239-01 Prepared: 01/17/2023 Analyzed: 01/18/2023					
pH	8.15		pH Units		8.16			0.123	25	
Specific Conductance (EC)	0.650	0.00500	mmhos/cm		0.635			2.35	25	

Origins Laboratory, Inc.



The results in this report apply to the samples analyzed in accordance with the chain of custody document. This analytical report must be reproduced in its entirety.

Eagle Environmental Consulting, Inc.
 8000 W 44th Ave
 Wheat Ridge CO 80033

Martin C Eckert III
 Project Number: [none]
 Project: Noble - Ocoma G #25-16

Total Metals by 7196A - Quality Control
Waypoint Analytical, LLC.

Analyte	Result	Reporting Limit	Units	Spike Level	Source Result	%REC	%REC Limits	RPD	RPD Limit	Notes
Batch L660889 -										
DUP (L 96554-DUP)		Source: 96554			Prepared: Analyzed: 01/27/2023					
Chromium, Hexavalent	ND	0.5	mg/Kg		<0.500		-	0	20	
MS (L 96554-MS)		Source: 96554			Prepared: Analyzed: 01/27/2023					
Chromium, Hexavalent	34.8	2.51	mg/Kg	40.1	< 0.244	87	75-125			
LCS (LCS)		Prepared: Analyzed: 01/27/2023								
Chromium, Hexavalent	6.41	0.5	mg/Kg	8		80	75-125			
LRB (LRB)		Prepared: Analyzed: 01/27/2023								
Chromium, Hexavalent	ND	0.5	mg/Kg				-			

Origins Laboratory, Inc.



The results in this report apply to the samples analyzed in accordance with the chain of custody document. This analytical report must be reproduced in its entirety.

Eagle Environmental Consulting, Inc.
 8000 W 44th Ave
 Wheat Ridge CO 80033

Martin C Eckert III
 Project Number: [none]
 Project: Noble - Ocoma G #25-16

PAH by 8270D SIM - Quality Control
Waypoint Analytical, LLC.

Analyte	Result	Reporting Limit	Units	Spike Level	Source Result	%REC	%REC Limits	RPD	RPD Limit	Notes
---------	--------	-----------------	-------	-------------	---------------	------	-------------	-----	-----------	-------

Batch L659360 - 3550B

MSD (L 94574-MSD-L659360)	Source: 94574		Prepared: 01/19/2023 Analyzed: 01/19/2023							
Benzo(b)fluoranthene	0.0803	0.00067	mg/Kg	0.164	<0.000585	48.9	30-130	7	30	
Pyrene	0.0903	0.00067	"	0.164	<0.000643	55	30-130	4.2	30	
Benzo(a)pyrene	0.104	0.00067	"	0.164	<0.000468	63.4	30-130	1.9	30	
1-Methylnaphthalene	0.0813	0.00201	"	0.164	<0.00109	49.5	30-130	3.6	30	
2-Methylnaphthalene	0.0848	0.00201	"	0.164	<0.00194	51.7	30-130	4.4	30	
Acenaphthene	0.0865	0.00067	"	0.164	<0.000304	52.7	30-130	5.5	30	
Chrysene	0.0994	0.00067	"	0.164	<0.000624	60.6	30-130	0.1	30	
Benzo(a)anthracene	0.0963	0.00067	"	0.164	<0.000493	58.7	30-130	1.5	30	
Naphthalene	0.0819	0.00201	"	0.164	<0.00145	49.9	30-130	6.5	30	
Benzo(k)fluoranthene	0.0915	0.00067	"	0.164	<0.000437	55.7	30-130	18.5	30	
Dibenz(a,h)anthracene	0.12	0.00067	"	0.164	<0.000614	73.1	30-130	6.8	30	
Fluoranthene	0.102	0.00067	"	0.164	<0.000394	62.1	30-130	4.2	30	
Fluorene	0.0881	0.00067	"	0.164	<0.000286	53.7	30-130	5.7	30	
Indeno(1,2,3-cd)pyrene	0.11	0.00067	"	0.164	<0.000627	67	30-130	8.5	30	
Anthracene	0.0925	0.00067	"	0.164	<0.000334	56.4	30-130	4.1	30	
<i>Surrogate: Nitrobenzene-d5</i>	48		"	0.329	160	48	29-110			
<i>Surrogate: 2-Fluorobiphenyl</i>	48.6		"	0.329	153	48.6	33-115			
<i>Surrogate: 4-Terphenyl-d14</i>	59.2		"	0.329	197	59.2	33-122			

MS (L 94574-MS-L659360)	Source: 94574		Prepared: 01/19/2023 Analyzed: 01/19/2023							
Pyrene	0.0865	0.00067	mg/Kg	0.164	<0.000643	52.7	30-130			
2-Methylnaphthalene	0.0811	0.00201	"	0.164	<0.00194	49.4	30-130			
Naphthalene	0.0767	0.00201	"	0.164	<0.00145	46.7	30-130			
Acenaphthene	0.0818	0.00067	"	0.164	<0.000304	49.8	30-130			
Anthracene	0.0887	0.00067	"	0.164	<0.000334	54	30-130			
Benzo(a)anthracene	0.0948	0.00067	"	0.164	<0.000493	57.8	30-130			
Benzo(a)pyrene	0.102	0.00067	"	0.164	<0.000468	62.1	30-130			

Origins Laboratory, Inc.



The results in this report apply to the samples analyzed in accordance with the chain of custody document. This analytical report must be reproduced in its entirety.

Eagle Environmental Consulting, Inc.
 8000 W 44th Ave
 Wheat Ridge CO 80033

Martin C Eckert III
 Project Number: [none]
 Project: Noble - Ocoma G #25-16

PAH by 8270D SIM - Quality Control
Waypoint Analytical, LLC.

Analyte	Result	Reporting Limit	Units	Spike Level	Source Result	%REC	%REC Limits	RPD	RPD Limit	Notes
---------	--------	-----------------	-------	-------------	---------------	------	-------------	-----	-----------	-------

Batch L659360 - 3550B

MS (L 94574-MS-L659360)	Source: 94574			Prepared: 01/19/2023 Analyzed: 01/19/2023						
Benzo(b)fluoranthene	0.0862	0.00067	mg/Kg	0.164	<0.000585	52.5	30-130			
Benzo(k)fluoranthene	0.076	0.00067	"	0.164	<0.000437	46.3	30-130			
Chrysene	0.0993	0.00067	"	0.164	<0.000624	60.5	30-130			
Dibenz(a,h)anthracene	0.112	0.00067	"	0.164	<0.000614	68.2	30-130			
1-Methylnaphthalene	0.0784	0.00201	"	0.164	<0.00109	47.8	30-130			
Indeno(1,2,3-cd)pyrene	0.101	0.00067	"	0.164	<0.000627	61.5	30-130			
Fluorene	0.0832	0.00067	"	0.164	<0.000286	50.7	30-130			
Fluoranthene	0.0978	0.00067	"	0.164	<0.000394	59.6	30-130			
Surrogate: Nitrobenzene-d5	48.4		"	0.328	160	48.4	29-110			
Surrogate: 2-Fluorobiphenyl	50		"	0.328	153	50	33-115			
Surrogate: 4-Terphenyl-d14	59.1		"	0.328	197	59.1	33-122			

LCS (LCS-L659360)	Prepared: 01/19/2023 Analyzed: 01/19/2023									
Naphthalene	0.102	0.00201	mg/Kg	0.167		61	30-130			
Benzo(k)fluoranthene	0.094	0.00067	"	0.167		56.2	30-130			
Indeno(1,2,3-cd)pyrene	0.122	0.00067	"	0.167		73	30-130			
Fluorene	0.106	0.00067	"	0.167		63.4	30-130			
1-Methylnaphthalene	0.102	0.00201	"	0.167		61	30-130			
Dibenz(a,h)anthracene	0.141	0.00067	"	0.167		84.4	30-130			
Pyrene	0.108	0.00067	"	0.167		64.6	30-130			
2-Methylnaphthalene	0.107	0.00201	"	0.167		64	30-130			
Chrysene	0.124	0.00067	"	0.167		74.2	30-130			
Fluoranthene	0.12	0.00067	"	0.167		71.8	30-130			
Benzo(b)fluoranthene	0.0999	0.00067	"	0.167		59.8	30-130			
Benzo(a)pyrene	0.128	0.00067	"	0.167		76.6	30-130			
Benzo(a)anthracene	0.115	0.00067	"	0.167		68.8	30-130			
Anthracene	0.115	0.00067	"	0.167		68.8	30-130			

Origins Laboratory, Inc.



The results in this report apply to the samples analyzed in accordance with the chain of custody document. This analytical report must be reproduced in its entirety.

Eagle Environmental Consulting, Inc.
 8000 W 44th Ave
 Wheat Ridge CO 80033

Martin C Eckert III
 Project Number: [none]
 Project: Noble - Ocoma G #25-16

PAH by 8270D SIM - Quality Control
Waypoint Analytical, LLC.

Analyte	Result	Reporting Limit	Units	Spike Level	Source Result	%REC	%REC Limits	RPD	RPD Limit	Notes
---------	--------	-----------------	-------	-------------	---------------	------	-------------	-----	-----------	-------

Batch L659360 - 3550B

LCS (LCS-L659360)

Prepared: 01/19/2023 Analyzed: 01/19/2023

Acenaphthene	0.105	0.00067	mg/Kg	0.167		62.8	30-130			
Surrogate: Nitrobenzene-d5	61.8		"	0.333		61.8	29-110			
Surrogate: 2-Fluorobiphenyl	65.7		"	0.333		65.7	33-115			
Surrogate: 4-Terphenyl-d14	74.4		"	0.333		74.4	33-122			

LRB (LRB-L659360)

Prepared: 01/19/2023 Analyzed: 01/19/2023

2-Methylnaphthalene	ND	0.00201	mg/Kg				-			
Benzo(k)fluoranthene	ND	0.00067	"				-			
Indeno(1,2,3-cd)pyrene	ND	0.00067	"				-			
Fluorene	ND	0.00067	"				-			
Fluoranthene	ND	0.00067	"				-			
Dibenz(a,h)anthracene	ND	0.00067	"				-			
Chrysene	ND	0.00067	"				-			
Naphthalene	ND	0.00201	"				-			
Benzo(b)fluoranthene	ND	0.00067	"				-			
Benzo(a)pyrene	ND	0.00067	"				-			
Benzo(a)anthracene	ND	0.00067	"				-			
Anthracene	ND	0.00067	"				-			
1-Methylnaphthalene	ND	0.00201	"				-			
Pyrene	ND	0.00067	"				-			
Acenaphthene	ND	0.00067	"				-			
Surrogate: Nitrobenzene-d5	57.9		"	0.333		57.9	29-110			
Surrogate: 4-Terphenyl-d14	66		"	0.333		66	33-122			
Surrogate: 2-Fluorobiphenyl	52.5		"	0.333		52.5	33-115			

Origins Laboratory, Inc.



The results in this report apply to the samples analyzed in accordance with the chain of custody document. This analytical report must be reproduced in its entirety.

Eagle Environmental Consulting, Inc.
8000 W 44th Ave
Wheat Ridge CO 80033

Martin C Eckert III
Project Number: [none]
Project: Noble - Ocoma G #25-16

Notes and Definitions

- U Sample is Non-Detect.
- S-GC Surrogate recovery outside of control limits. The data was accepted based on valid recovery of the remaining surrogate.
- QM-07 The spike recovery was outside acceptance limits for the MS and/or MSD. The batch was accepted based on acceptable LCS recovery.
- J Estimated Value. Analyte below reported quantitation limit.
- ND Analyte NOT DETECTED at or above the reporting limit
- RPD Relative Percent Difference
- All soil results are reported on a wet weight basis.

Origins Laboratory, Inc.



The results in this report apply to the samples analyzed in accordance with the chain of custody document. This analytical report must be reproduced in its entirety.



February 10, 2023

Eagle Environmental Consulting, Inc.

Martin C Eckert III

8000 W 44th Ave

Wheat Ridge CO 80033

Project Name - Noble - Ocoma G #25-16

Project Number - [none]

Attached are your analytical results for Noble - Ocoma G #25-16 received by Origins Laboratory, Inc. February 03, 2023. This project is associated with Origins project number Y302074-01.

The analytical results in the following report were analyzed under the guidelines of EPA Methods. These methods are identified as follows; "SW" are defined in SW-846, "EPA" are defined in 40CFR part 136 and "SM" are defined in the most current revision of Standard Methods For the Examination of Water and Wastewater.

The analytical results apply specifically to the samples and analyses specified per the attached Chain of Custody. As such, this report shall not be reproduced except in full, without the written approval of Origin's laboratory.

Unless otherwise noted, the analytical results for all soil samples are reported on a wet weight basis. All analytical analyses were performed under NELAP guidelines unless noted by a data qualifier.

Any holding time exceedances, deviations from the method specifications or deviations from Origins Laboratory's Standard Operating Procedures are outlined in the case narrative.

Thank you for selecting Origins for your analytical needs. Please contact us with any questions concerning this report, or if we can help with anything at all.

Origins Laboratory, Inc.
303.433.1322
o-squad@oelabinc.com



1725 Elk Place, Denver, CO 80211 | Phone: 303.433.1322 | Fax: 303.265.9645

Eagle Environmental Consulting, Inc.
8000 W 44th Ave
Wheat Ridge CO 80033

Martin C Eckert III
Project Number: [none]
Project: Noble - Ocoma G #25-16

CROSS REFERENCE REPORT

Sample ID	Laboratory ID	Matrix	Date Sampled	Date Received
BACKGROUND-01@2'	Y302074-01	Soil	January 16, 2023 8:22	02/03/2023 14:10

Origins Laboratory, Inc.



The results in this report apply to the samples analyzed in accordance with the chain of custody document. This analytical report must be reproduced in its entirety.

Eagle Environmental Consulting, Inc.
 8000 W 44th Ave
 Wheat Ridge CO 80033

Martin C Eckert III
 Project Number: [none]
 Project: Noble - Ocoma G #25-16

Origins Laboratory

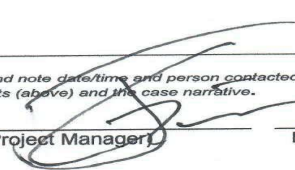
F-012207-01-R1
 Effective Date: 01/09/12

Sample Receipt Checklist

Origins Work Order: 4302074 Client: Eagle
 Client Project ID: Ocoma G #25-16
 Checklist Completed by: EHS/OC Shipped Via: HD
 Date/time completed: 2/3/23 (UPS, FedEx, Hand Delivered, Pick-up, etc.)
 Airbill #: NA
 Matrix(s) Received: (Check all that apply): Soil/Solid Water Other: _____
 Cooler Number/Temperature: 1 15.9 °C / _____ °C / _____ °C (Describe) _____ °C
 Thermometer ID: T004

Requirement Description	Yes	No	N/A	Comments (if any)
If samples require cooling, was the temperature between 0°C to ≤ 6°C ⁽¹⁾ ?	<input checked="" type="checkbox"/>			
Is there ice present (document if blue ice is used)	<input checked="" type="checkbox"/>			
Are custody seals present on cooler? (if so, document in comments if they are signed and dated, broken or intact)		<input checked="" type="checkbox"/>		
Are custody seals present on each sample container? (if so, document in comments if they are signed and dated, broken or intact)		<input checked="" type="checkbox"/>		
Were all samples received intact ⁽¹⁾ ?	<input checked="" type="checkbox"/>			
Was adequate sample volume provided ⁽¹⁾ ?	<input checked="" type="checkbox"/>			
Are short holding time analytes or samples with HTs due within 48 hours present ⁽¹⁾ ?		<input checked="" type="checkbox"/>		
Is a chain-of-custody (COC) present and filled out completely ⁽¹⁾ ?	<input checked="" type="checkbox"/>			
Does the COC agree with the number and type of sample bottles received ⁽¹⁾ ?	<input checked="" type="checkbox"/>			
Do the sample IDs on the bottle labels match the COC ⁽¹⁾ ?	<input checked="" type="checkbox"/>			
Is the COC properly relinquished by the client with date and time recorded ⁽¹⁾ ?	<input checked="" type="checkbox"/>			
For volatiles in water – is there headspace (> ¼ inch bubble) present? If yes, contact client and note in narrative.			<input checked="" type="checkbox"/>	
Are samples preserved that require preservation and was it checked ⁽¹⁾ ? (note ID of confirmation instrument used in comments) / (preservation is not confirmed for subcontracted analyses in order to insure sample integrity)/(pH <2 for samples preserved with HNO ₃ , HCL, H ₂ SO ₄) / (pH >10 for samples preserved with NaAsO ₂ +NaOH, ZnAc+NaOH)			<input checked="" type="checkbox"/>	
Additional Comments (if any):				

⁽¹⁾If NO, then contact the client before proceeding with analysis and note date/time and person contacted as well as the corrective action to in the additional comments (above) and the case narrative.

Reviewed by (Project Manager) 

Date/Time Reviewed 2/6/23

Origins Laboratory, Inc.



The results in this report apply to the samples analyzed in accordance with the chain of custody document. This analytical report must be reproduced in its entirety.

Eagle Environmental Consulting, Inc.
 8000 W 44th Ave
 Wheat Ridge CO 80033

Martin C Eckert III
 Project Number: [none]
 Project: Noble - Ocoma G #25-16

BACKGROUND-01@2'

1/16/2023 8:22:00AM

Analyte	Result	Reporting Limit	Units	Dilution	Batch	Analyst	Prepared	Analyzed	Notes
---------	--------	-----------------	-------	----------	-------	---------	----------	----------	-------

Origins Laboratory, Inc.
Y302074-01 (Soil)

pH in Soil by 9045D

pH	7.74		pH Units	1	B3B0612	HJD	02/06/2023	02/07/2023	
----	------	--	----------	---	---------	-----	------------	------------	--

Table 915 metals by EPA 6020B

Arsenic	1.97	0.0945	mg/kg	10	B3B0613	CIH	02/06/2023	02/06/2023	
Barium	123	9.45	"	"	"	CIH	"	"	
Cadmium	ND	0.0945	"	"	"	CIH	"	"	
Copper	ND	9.45	"	"	"	CIH	"	"	
Lead	ND	9.45	"	"	"	CIH	"	"	
Nickel	ND	9.45	"	"	"	CIH	"	"	
Selenium	ND	0.0945	"	"	"	CIH	"	"	
Silver	ND	0.0945	"	"	"	CIH	"	"	
Zinc	ND	94.5	"	"	"	CIH	"	"	

Origins Laboratory, Inc.



The results in this report apply to the samples analyzed in accordance with the chain of custody document. This analytical report must be reproduced in its entirety.

Eagle Environmental Consulting, Inc.
 8000 W 44th Ave
 Wheat Ridge CO 80033

Martin C Eckert III
 Project Number: [none]
 Project: Noble - Ocoma G #25-16

Metals by EPA 6000/7000 Series Methods - Quality Control
Origins Laboratory, Inc.

Analyte	Result	Reporting Limit	Units	Spike Level	Source Result	%REC	%REC Limits	RPD	RPD Limit	Notes
---------	--------	-----------------	-------	-------------	---------------	------	-------------	-----	-----------	-------

Batch B3B0613 - EPA 3050B

Blank (B3B0613-BLK1)

Prepared: 02/06/2023 Analyzed: 02/06/2023

Arsenic	ND	0.000100	mg/kg							
Barium	ND	0.0100	"							
Cadmium	ND	0.000100	"							
Copper	ND	0.0100	"							
Lead	ND	0.0100	"							
Nickel	ND	0.0100	"							
Selenium	ND	0.000100	"							
Silver	ND	0.000100	"							
Zinc	ND	0.100	"							

LCS (B3B0613-BS1)

Prepared: 02/06/2023 Analyzed: 02/06/2023

Arsenic	0.0493	0.000100	mg/kg	0.0500		98.6	80-120			
Barium	4.87	0.0100	"	5.00		97.3	80-120			
Cadmium	0.0511	0.000100	"	0.0500		102	80-120			
Copper	0.501	0.0100	"	0.500		100	80-120			
Lead	0.0502	0.0100	"	0.0500		100	80-120			
Nickel	0.0504	0.0100	"	0.0500		101	80-120			
Selenium	0.0475	0.000100	"	0.0500		95.0	80-120			
Silver	0.0495	0.000100	"	0.0500		99.0	80-120			
Zinc	0.488	0.100	"	0.500		97.6	80-120			

Matrix Spike (B3B0613-MS1)

Source: Y302040-03

Prepared: 02/06/2023 Analyzed: 02/06/2023

Arsenic	5.54	0.0958	mg/kg	4.79	1.19	90.8	75-125			
Barium	519	9.58	"	479	46.4	98.6	75-125			
Cadmium	4.93	0.0958	"	4.79	0.131	100	75-125			
Copper	51.3	9.58	"	47.9	4.29	98.1	75-125			
Lead	10.5	9.58	"	4.79	6.71	79.8	75-125			

Origins Laboratory, Inc.



The results in this report apply to the samples analyzed in accordance with the chain of custody document. This analytical report must be reproduced in its entirety.

Eagle Environmental Consulting, Inc.
 8000 W 44th Ave
 Wheat Ridge CO 80033

Martin C Eckert III
 Project Number: [none]
 Project: Noble - Ocoma G #25-16

Metals by EPA 6000/7000 Series Methods - Quality Control
Origins Laboratory, Inc.

Analyte	Result	Reporting Limit	Units	Spike Level	Source Result	%REC	%REC Limits	RPD	RPD Limit	Notes
---------	--------	-----------------	-------	-------------	---------------	------	-------------	-----	-----------	-------

Batch B3B0613 - EPA 3050B

Matrix Spike (B3B0613-MS1)

Source: Y302040-03

Prepared: 02/06/2023 Analyzed: 02/06/2023

Nickel	7.40	9.58	mg/kg	4.79	2.72	97.5	75-125			
Selenium	4.25	0.0958	"	4.79	0.0711	87.1	75-125			
Silver	4.32	0.0958	"	4.79	0.0426	89.2	75-125			
Zinc	59.0	95.8	"	47.9	17.4	86.8	75-125			

Matrix Spike Dup (B3B0613-MSD1)

Source: Y302040-03

Prepared: 02/06/2023 Analyzed: 02/06/2023

Arsenic	5.66	0.0960	mg/kg	4.80	1.19	93.0	75-125	2.04	20	
Barium	536	9.60	"	480	46.4	102	75-125	3.13	20	
Cadmium	4.93	0.0960	"	4.80	0.131	99.9	75-125	0.120	20	
Copper	51.6	9.60	"	48.0	4.29	98.5	75-125	0.558	20	
Lead	11.8	9.60	"	4.80	6.71	106	75-125	11.3	20	
Nickel	9.35	9.60	"	4.80	2.72	138	75-125	23.4	20	QM-07, QR-DUP
Selenium	4.26	0.0960	"	4.80	0.0711	87.2	75-125	0.234	20	
Silver	4.22	0.0960	"	4.80	0.0426	87.0	75-125	2.28	20	
Zinc	63.7	96.0	"	48.0	17.4	96.5	75-125	7.69	20	

Origins Laboratory, Inc.



The results in this report apply to the samples analyzed in accordance with the chain of custody document. This analytical report must be reproduced in its entirety.

Eagle Environmental Consulting, Inc.
 8000 W 44th Ave
 Wheat Ridge CO 80033

Martin C Eckert III
 Project Number: [none]
 Project: Noble - Ocoma G #25-16

Saturated Paste - Quality Control
Origins Laboratory, Inc.

Analyte	Result	Reporting Limit	Units	Spike Level	Source Result	%REC	%REC Limits	RPD	RPD Limit	Notes
---------	--------	-----------------	-------	-------------	---------------	------	-------------	-----	-----------	-------

Batch B3B0612 - Saturated Paste pH/EC

Duplicate (B3B0612-DUP1)

Source: Y302071-01

Prepared: 02/06/2023 Analyzed: 02/07/2023

pH	8.42		pH Units		8.37			0.596	25	
----	------	--	----------	--	------	--	--	-------	----	--

Origins Laboratory, Inc.



The results in this report apply to the samples analyzed in accordance with the chain of custody document. This analytical report must be reproduced in its entirety.

Eagle Environmental Consulting, Inc.
8000 W 44th Ave
Wheat Ridge CO 80033

Martin C Eckert III
Project Number: [none]
Project: Noble - Ocoma G #25-16

Notes and Definitions

QR-DUP RPD exceeds QC acceptance criteria, this indicates source sample is not homogenous.

QM-07 The spike recovery was outside acceptance limits for the MS and/or MSD. The batch was accepted based on acceptable LCS recovery.

ND Analyte NOT DETECTED at or above the reporting limit

RPD Relative Percent Difference

All soil results are reported at a wet weight basis.

Origins Laboratory, Inc.



The results in this report apply to the samples analyzed in accordance with the chain of custody document. This analytical report must be reproduced in its entirety.