

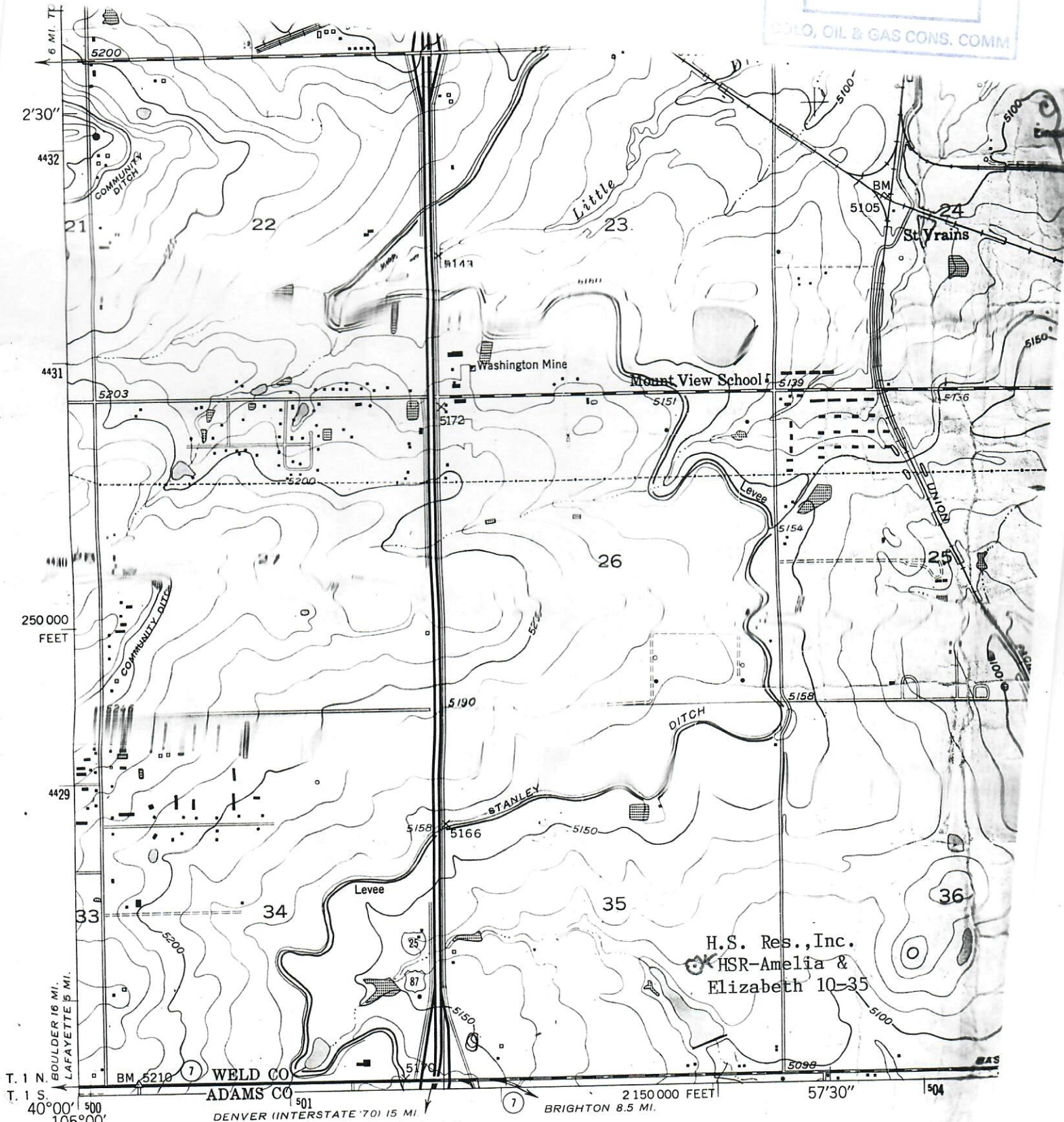


123-19656

RECEIVED

JUN 16 1998

COLO. OIL & GAS CONS. COMM

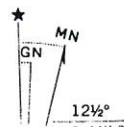


T. 1 N.
T. 1 S.
BOULDER 16 MI.
LAFAYETTE 5 MI.
VETTE)
NE

WELD CO
ADAMS CO
DENVER (INTERSTATE '70) 15 MI.
BRIGHTON 8.5 MI.

H.S. Res., Inc.
HSR-Amelia &
Elizabeth 10-35

Mapped, edited, and published by the Geological Survey
as part of the Department of the Interior program
for the development of the Missouri River Basin



00051608

