

# Cement Verification Report - Cementer's Well Service, Inc.

P.O. BOX 336220 • GREELEY, CO 80633 • (970) 353-7299 • FAX (970) 353-7712

COGCC Operator Guidance **RULE #308.A.B(2)A.ii**



CLIENT: PDC Energy	Cementer's FIELD TICKET #	300435-D
--------------------	------------------------------	----------

**Requested Operator Guidance:**

Well Name & Number	Lease	Spinney	Well No.	02N
--------------------	-------	---------	----------	-----

Well API Number	05-123-51633
-----------------	--------------

Job Date	2/27/23	Time on	21:45	2/26/23	24 hr time
----------	---------	---------	-------	---------	------------

Job Type	New Well Surface
----------	------------------

Cementing Company	Cementer's Well Service, Inc	Contact	Nate Kvamme - 303-324-4296
-------------------	------------------------------	---------	----------------------------

Ambient conditions	clear	41	temp deg F
--------------------	-------	----	------------

Slurry Description	
--------------------	--

a) Purpose	Surface - 9 5/8" 36# CSG, 13 1/2" hole
------------	--

b) Cement Class	Type I / II
-----------------	-------------

c) Cement Yield	1.61	cuft / sk
-----------------	------	-----------

d) Cement Density	13.9	PPG
-------------------	------	-----

e) Number of sks	768	sks (94# equiv)
------------------	-----	-----------------

f) Mix Fluid Type	
-------------------	--

Water / Cement	8.5	Gal / sk
----------------	-----	----------

g) Slurry mixed	220.0	BBLs slurry
-----------------	-------	-------------

h) Additives used	1.50% CaCl2	3.00% Bentonite
-------------------	-------------	-----------------

Total Water Used	316.4	BBLs H2O
------------------	-------	----------

i) Displacement Fluid Vol	130.9	BBLs H2O
---------------------------	-------	----------

j) Method of Placement	
------------------------	--

k) Set Depth	1,734	feet (ft)
--------------	-------	-----------

l) Stage tool depth	n/a
---------------------	-----

m) Float Collar Depth	1,694	feet (ft)
-----------------------	-------	-----------

n) Designed Top of Cement	n/a	to surface
---------------------------	-----	------------

o) Centralizer depths	-	feet (ft)
-----------------------	---	-----------

**Charts - (pressure, density, pump rate)**

Landed Plug @	1,633	psi	Final Lift Pressure @	400	psi
---------------	-------	-----	-----------------------	-----	-----

Cement Density (as weighed during job) @	13.9	PPG
--	------	-----

**Job notes**

a) Plug down	<input checked="" type="radio"/> Y / <input type="radio"/> N	Time	1:32	24 hr time
--------------	--	------	------	------------

b) Floats held	<input checked="" type="radio"/> Y / <input type="radio"/> N		2/27/23
----------------	--	--	---------

c) Full Returns	<input checked="" type="radio"/> Y / <input type="radio"/> N	Lost Circulation	<input checked="" type="radio"/> Y / <input type="radio"/> N
-----------------	--	------------------	--

d) Cement to surface	<input checked="" type="radio"/> Y / <input type="radio"/> N	30.0	BBLs to surface
----------------------	--	------	-----------------

e) If no returns, top off	n/a	BBLs
---------------------------	-----	------

f) Top off detail	
-------------------	--

g) Additional Detail	0
----------------------	---

	0
--	---

# Cementer's Well Service, Inc.

P.O. BOX 336220 • GREELEY, CO 80633 • (970) 353-7299 • FAX (970) 353-7712



PDC Energy

## Surface Casing Pressure Test - Cement Job Graph

### COMPANY DETAILS

Date	2/27/23	API #	05-123-51633	Well No.	02N
County	Weld	State	CO	Lease	Spinney

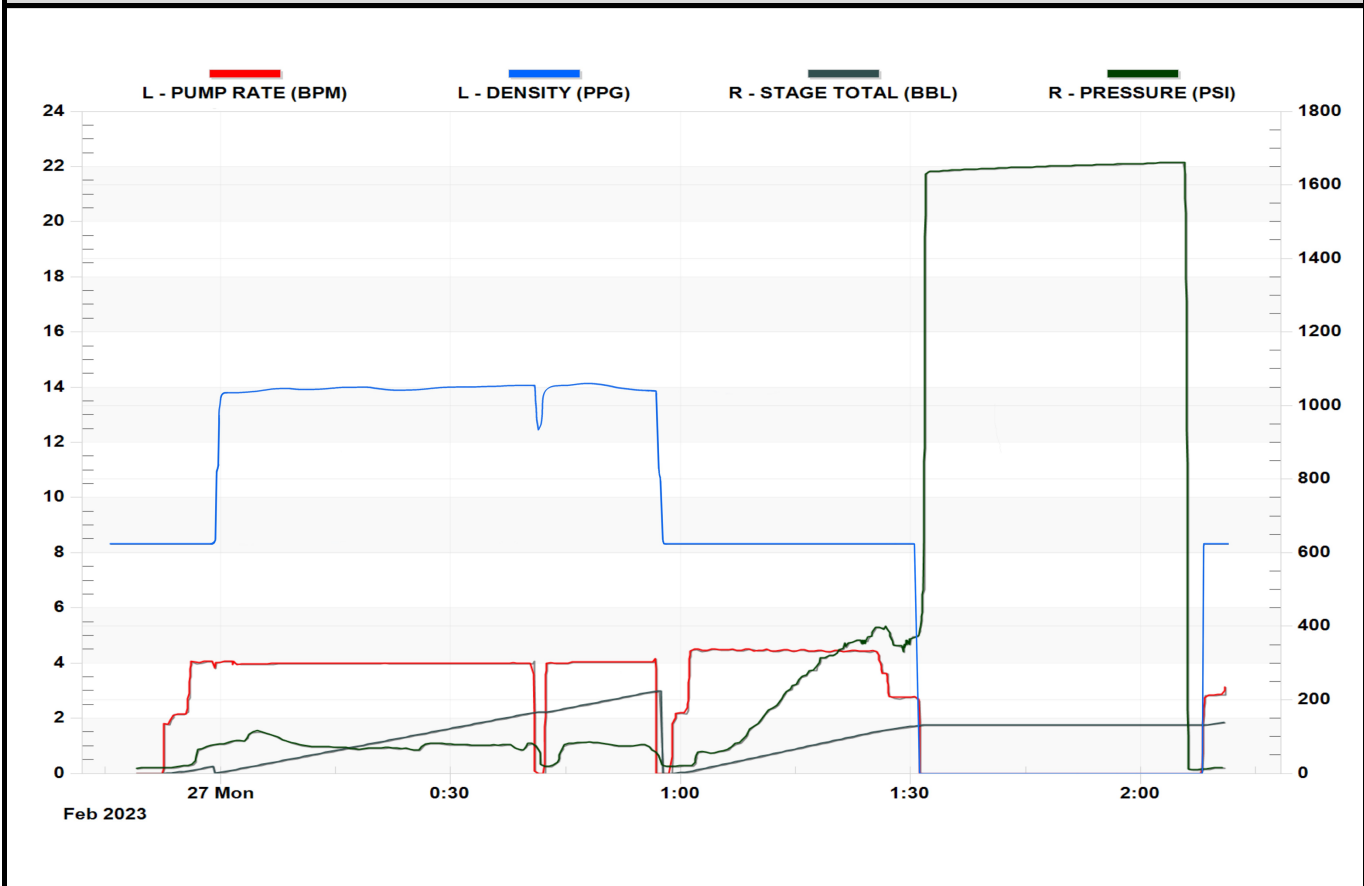
Client PDC Energy

Contact / email \_\_\_\_\_

### JOB DETAILS

TIME ON	21:45	2/26/23	Depth	1,744	ft.	Pressure Test @	1,633	psi
START TIME	23:49	2/26/23	Bottom of Surface	1,734	ft.	10 min	1,650	psi
END TIME	2:11	2/27/23	Plug Landed @	1,694	ft.	20 min	1,656	psi
			Plug Landed @	1:32	24 hr	30 min	1,661	psi

### SUMMARY GRAPH





## Centralizer Depths

**Well Name: Spinney 02N**

**Surface, Set Depth: 1,750.2ftKB**

API 05123516330000		Surface Legal Location SWSW 9 3N 66W		Field Name Wattenberg		State CO		Well Configuration Type Horizontal	
Ground Elevation (ft) 4,861.00	Original KB Elevation (ft) 4,889.50	KB-Ground Distance (ft) 28.50	Spud Date 5/7/2023 07:00	Rig Release Date 5/16/2023 00:00	On Production Date	Abandon Date			

### Casing Run Tally

Run #	Ref #	Item Des	OD (in)	Wt (lb/ft)	Grade	Run?	Len (ft)	Centralized?	Ext Jw/ry	Connections	Top (ftKB)	Cum Len (ft)
2	1	Casing joints	9 5/8	36.00	J-55	Yes	40.52	Yes		LT&C	1,708.3	41.95
4	2	Casing joints	9 5/8	36.00	J-55	Yes	40.11	Yes		LT&C	1,666.8	83.38
5	3	Casing joints	9 5/8	36.00	J-55	Yes	41.14	Yes		LT&C	1,625.7	124.52
9	7	Casing joints	9 5/8	36.00	J-55	Yes	40.59	Yes		LT&C	1,462.2	287.98
13	11	Casing joints	9 5/8	36.00	J-55	Yes	40.36	Yes		LT&C	1,300.1	450.15
17	15	Casing joints	9 5/8	36.00	J-55	Yes	40.48	Yes		LT&C	1,137.1	613.07
21	19	Casing joints	9 5/8	36.00	J-55	Yes	41.00	Yes		LT&C	975.2	775.04
25	23	Casing joints	9 5/8	36.00	J-55	Yes	40.56	Yes		LT&C	812.1	938.07
29	27	Casing joints	9 5/8	36.00	J-55	Yes	40.50	Yes		LT&C	648.5	1,101.68
33	31	Casing joints	9 5/8	36.00	J-55	Yes	41.13	Yes		LT&C	485.9	1,264.34
37	35	Casing joints	9 5/8	36.00	J-55	Yes	40.52	Yes		LT&C	322.1	1,428.13
41	39	Casing joints	9 5/8	36.00	J-55	Yes	40.53	Yes		LT&C	158.9	1,591.32
43	41	Casing joints	9 5/8	36.00	J-55	Yes	41.00	Yes		LT&C	76.9	1,673.29