

Xbolt GAMMA RAY

1in/100ft Measured Depth

Final Print

Recorded Mode



Company:	PDC Energy Inc	API Number:	05-123-51636
Well:	Spinney 01N	Rig Name:	Patterson 272
Field Name:	Wattenberg	Rig Type:	Land rig
Country Name:	United States	Job Number:	0.1039768.40
State Name:	Colorado	Print Type:	Final Print
County Name:	Weld	Northing:	1329185.91 (ft)
Latitude:	40°14'05.346"N	Easting:	3198980.18 (ft)
Longitude:	104°47'14.224"W	Coordinate System:	NAD83 Colorado State Plane, Northern Zone, US Feet
Spud Date:	26-Apr-2023		
Log Interval:	1728.00-23008.00 (ft)		
Depth Source:	Driller's Depth		
Log Measured From:	Drill Floor		
Rig Floor above Ground Level:	28.50 (ft)		
Ground Level above Mean Sea Level:	4861.00 (ft)		

Disclaimer

THE USE OF AND RELIANCE UPON THIS RECORDED-DATA BY THE HEREIN NAMED COMPANY (AND ANY OF ITS AFFILIATES, PARTNERS, REPRESENTATIVES, AGENTS, CONSULTANTS AND EMPLOYEES) IS SUBJECT TO THE TERMS AND CONDITIONS AGREED UPON BETWEEN SLB AND THE COMPANY, INCLUDING: (a) RESTRICTIONS ON USE OF THE RECORDED-DATA; (b) DISCLAIMERS AND WAIVERS OF WARRANTIES AND REPRESENTATIONS REGARDING COMPANY'S USE AND RELIANCE UPON THE RECORDED-DATA; AND (c) CUSTOMER'S FULL AND SOLE RESPONSIBILITY FOR ANY INFERENCE DRAWN OR DECISION MADE IN CONNECTION WITH THE USE OF THIS RECORDED-DATA.

Operational Run Summary

Notes

Run 1 (Bit Size: 8.5 in)

DateTime Log Started	28-Apr-2023 11:18:27	DateTime Log Finished	28-Apr-2023 20:05:32
Start Depth (ft)	1754	Stop Depth (ft)	1958
Mud Type	Oil Based Mud	Mud Density (lbm/gal)	10.2
Potassium (%)	0	Barite	Yes
GR Sensor Offset (ft)	27.08	Calibration Coefficient	0
DNI Sensor Offset (ft)	30.72		

Run 2 (Bit Size: 8.5 in)

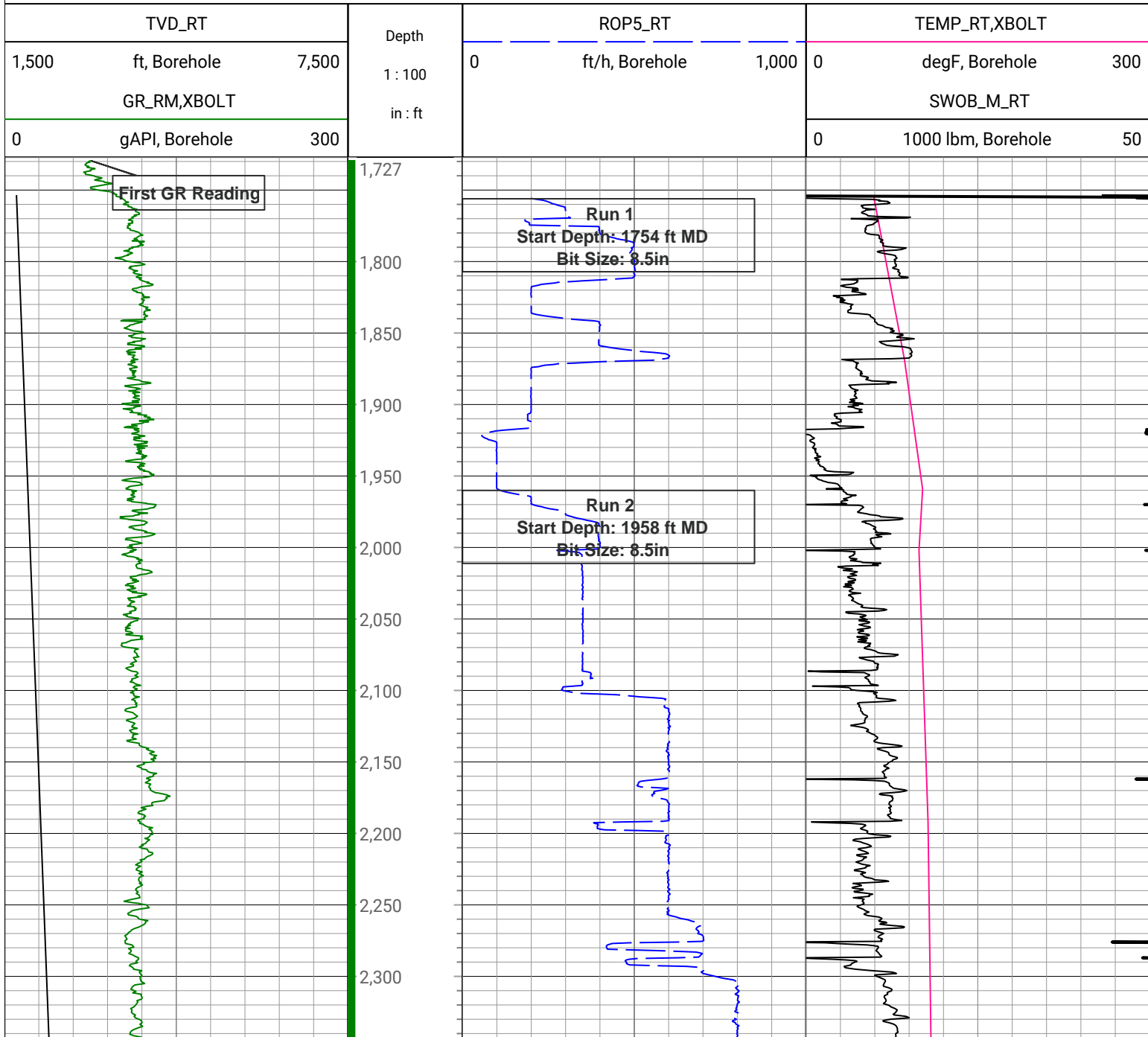
DateTime Log Started	28-Apr-2023 23:04:30	DateTime Log Finished	01-May-2023 09:57:41
Start Depth (ft)	1958	Stop Depth (ft)	17669
Mud Type	Oil Based Mud	Mud Density (lbm/gal)	10.2
Potassium (%)	0	Barite	Yes
GR Sensor Offset (ft)	27.12	Calibration Coefficient	0

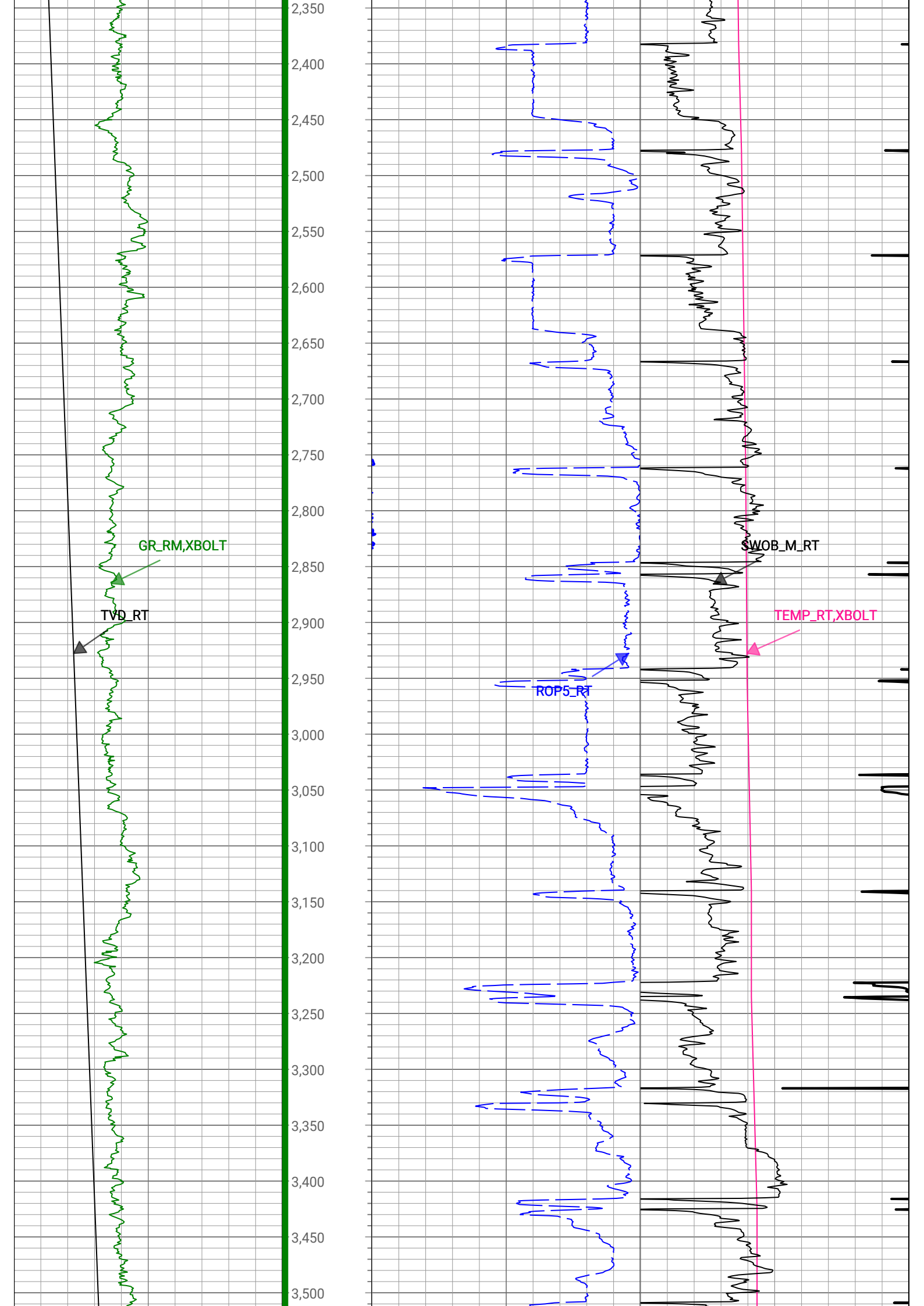
DNI Sensor Offset (ft)	30.76		
Run 3 (Bit Size: 8.5 in)			
DateTime Log Started	01-May-2023 11:35:00	DateTime Log Finished	03-May-2023 12:54:41
Start Depth (ft)	17669	Stop Depth (ft)	22315
Mud Type	Oil Based Mud	Mud Density (lbm/gal)	10.2
Potassium (%)	0	Barite	Yes
GR Sensor Offset (ft)	27.06	Calibration Coefficient	0
DNI Sensor Offset (ft)	30.7		

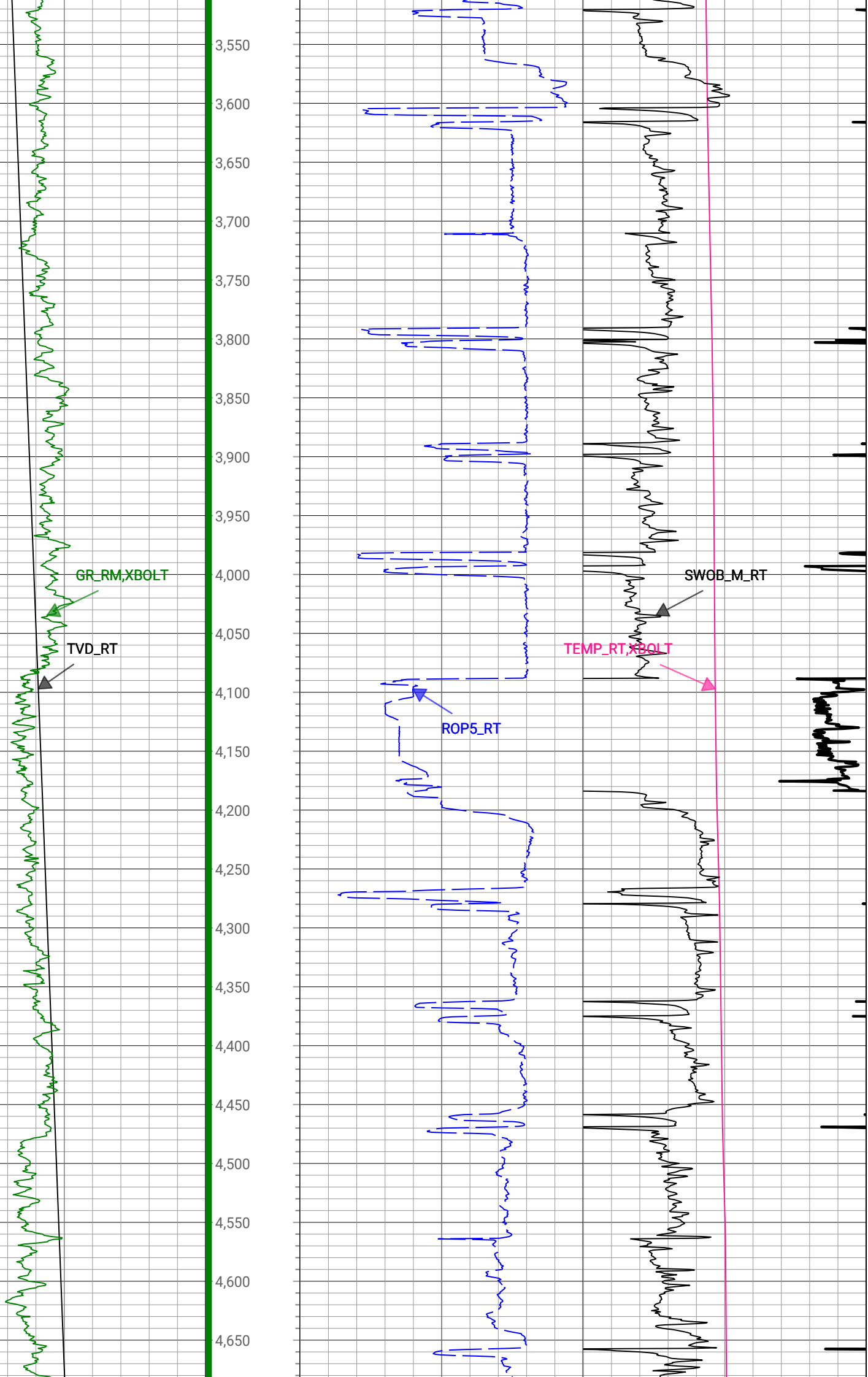
Run 4 (Bit Size: 8.5 in)			
DateTime Log Started	03-May-2023 12:54:48	DateTime Log Finished	05-May-2023 03:30:17
Start Depth (ft)	22315	Stop Depth (ft)	23008
Mud Type	Oil Based Mud	Mud Density (lbm/gal)	10.2
Potassium (%)	0	Barite	Yes
GR Sensor Offset (ft)	27.04	Calibration Coefficient	0
DNI Sensor Offset (ft)	30.68		

Log

Description: Xbolt GAMMA RAY Format: XBOLT_PDC Index Scale: 1in/100ft Index Unit: ft Index Type: Measured Depth
 Creation Date: 12-May-2023







3,550

3,600

3,650

3,700

3,750

3,800

3,850

3,900

3,950

4,000

4,050

4,100

4,150

4,200

4,250

4,300

4,350

4,400

4,450

4,500

4,550

4,600

4,650

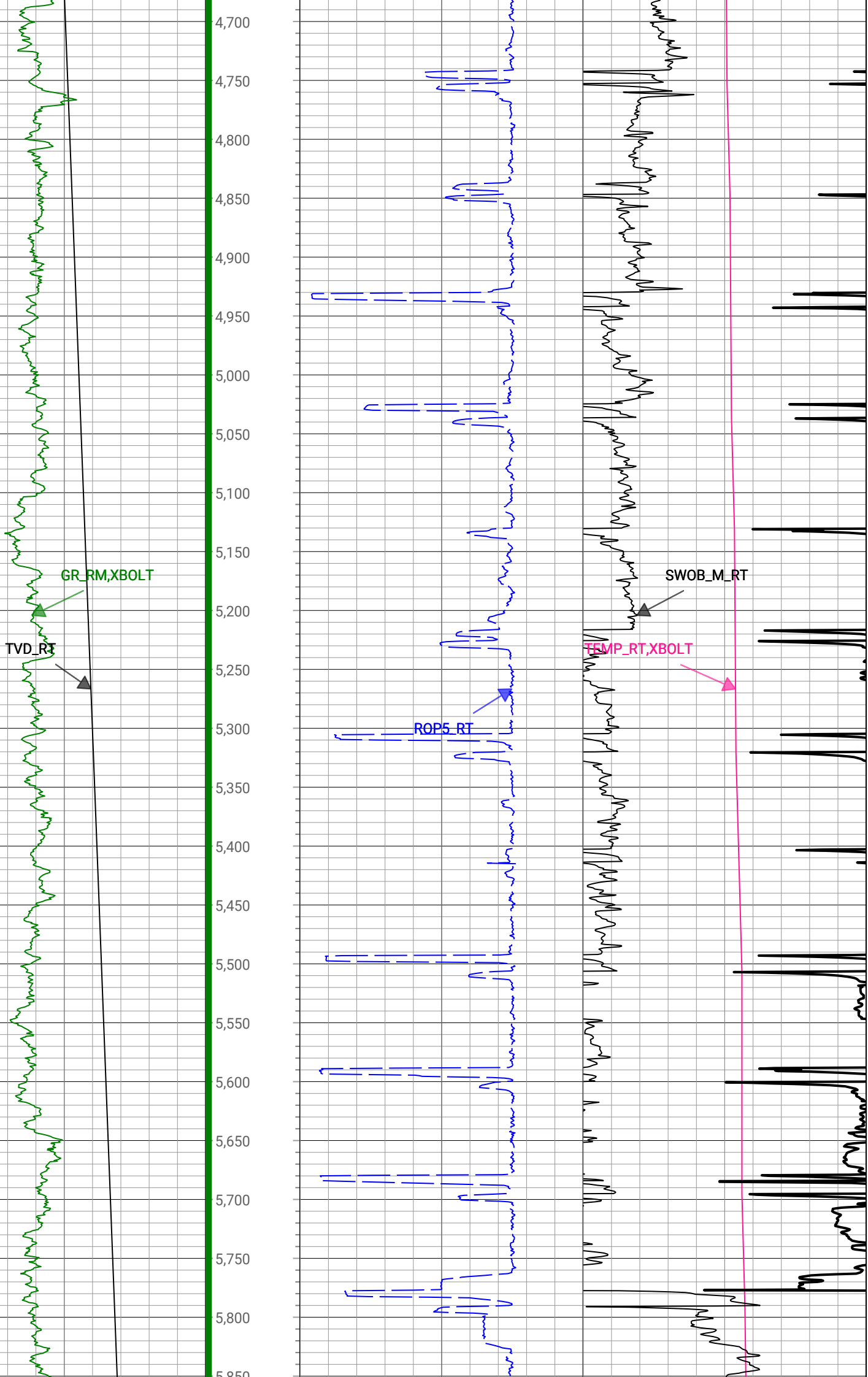
GR_RM, XBOLT

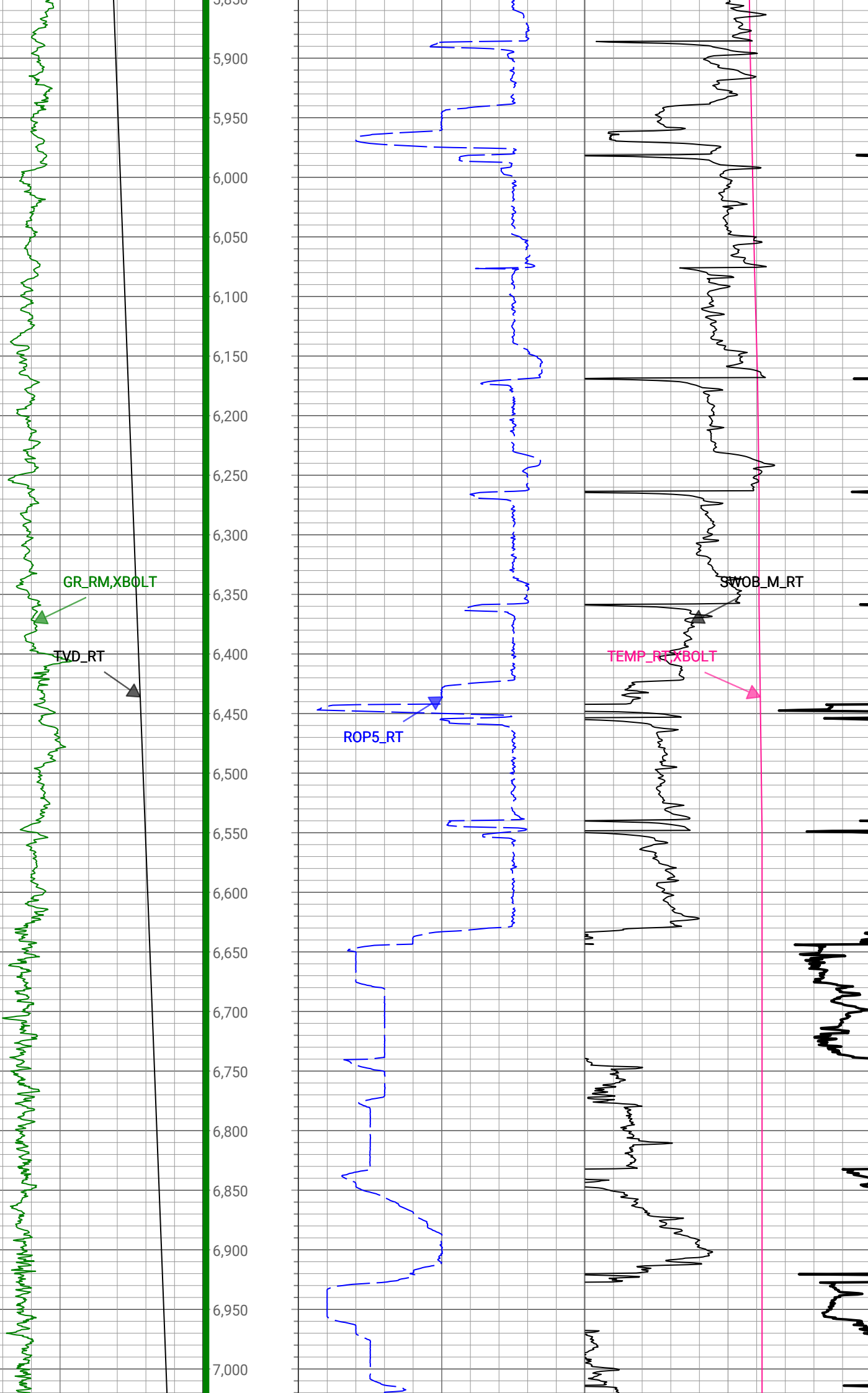
TVD_RT

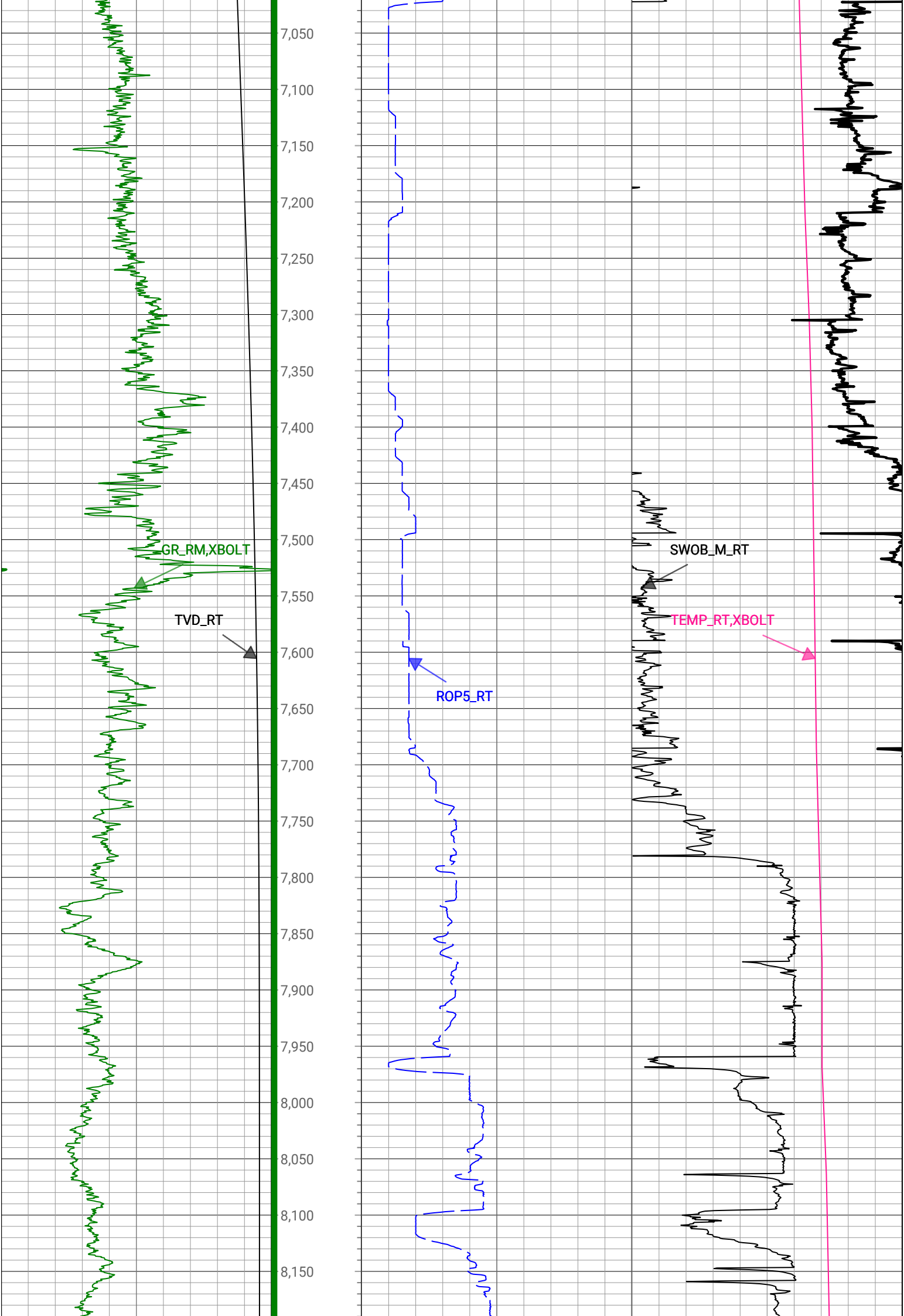
ROP5_RT

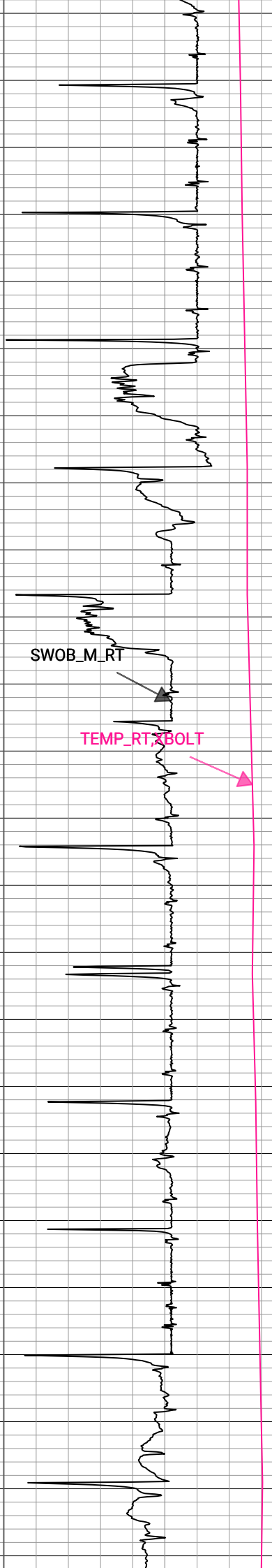
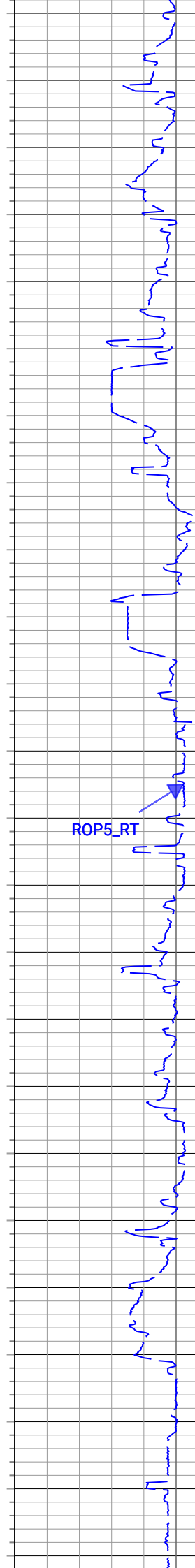
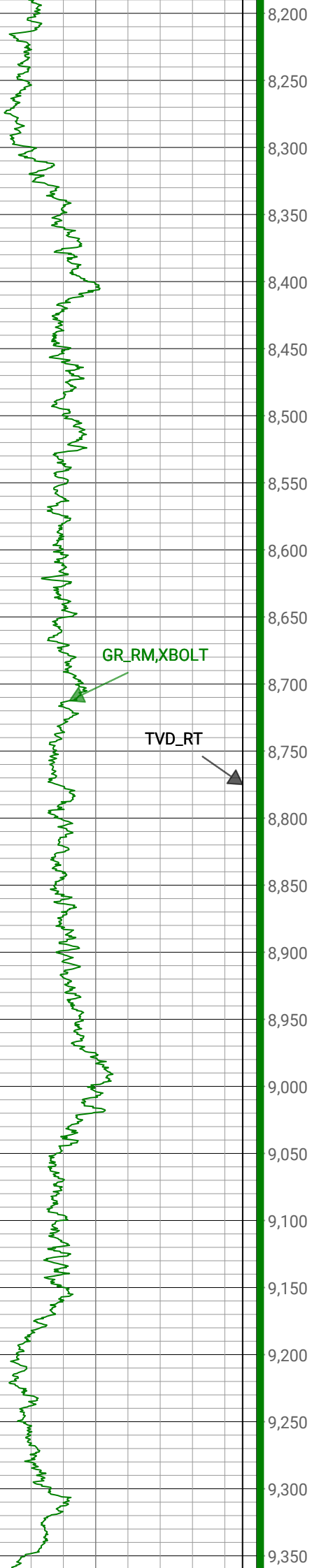
TEMP_RT, XBOLT

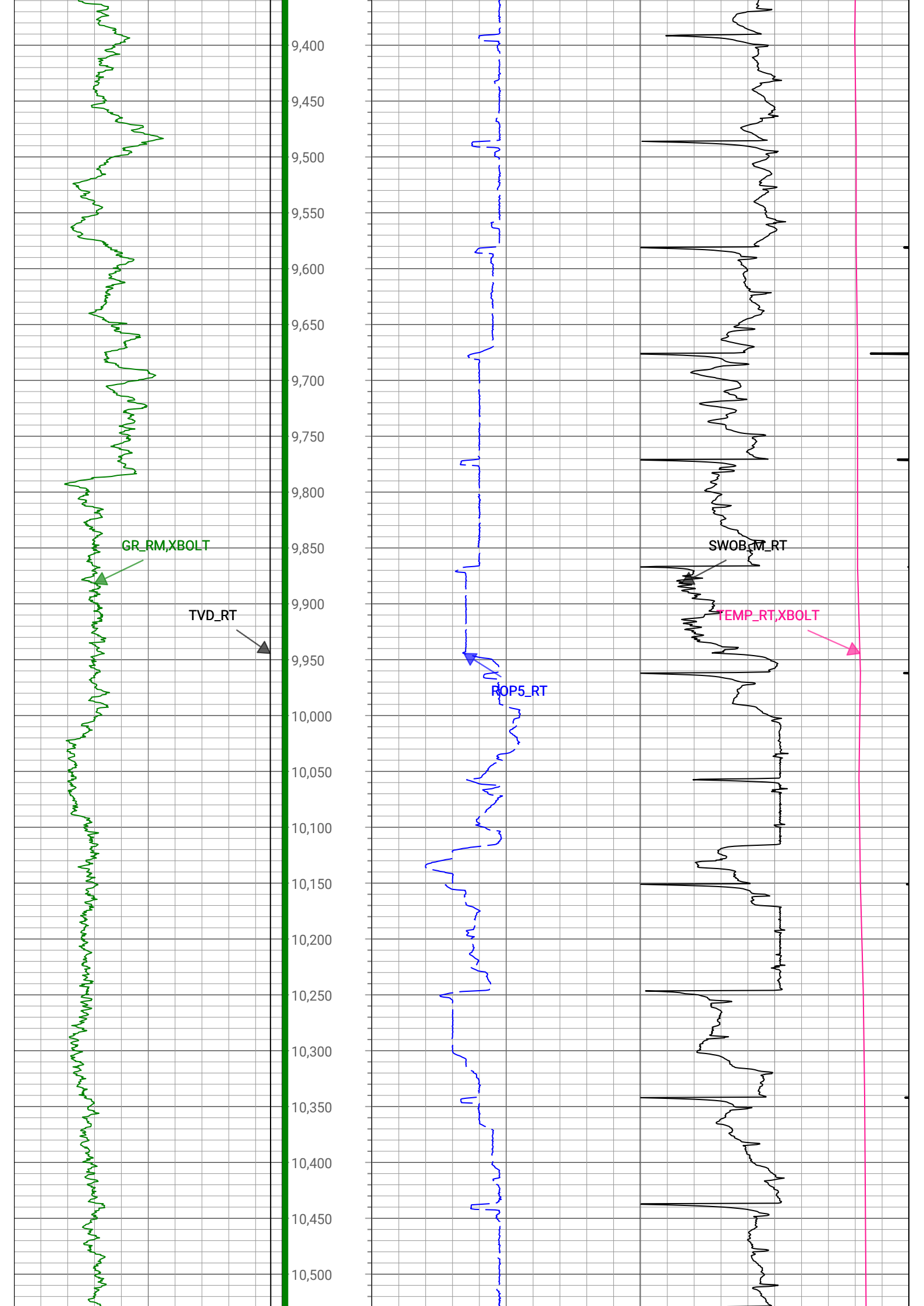
SWOB_M_RT

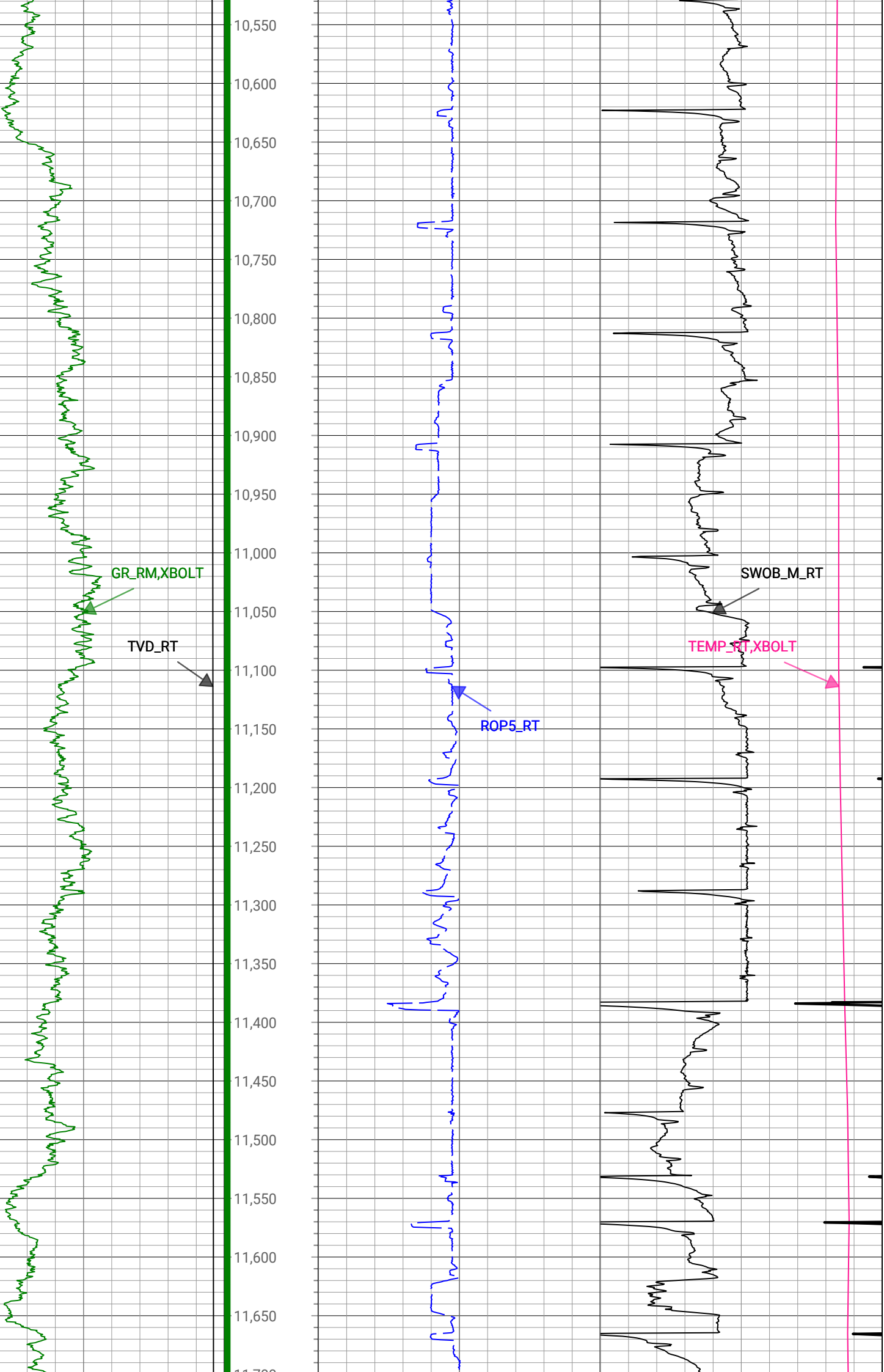


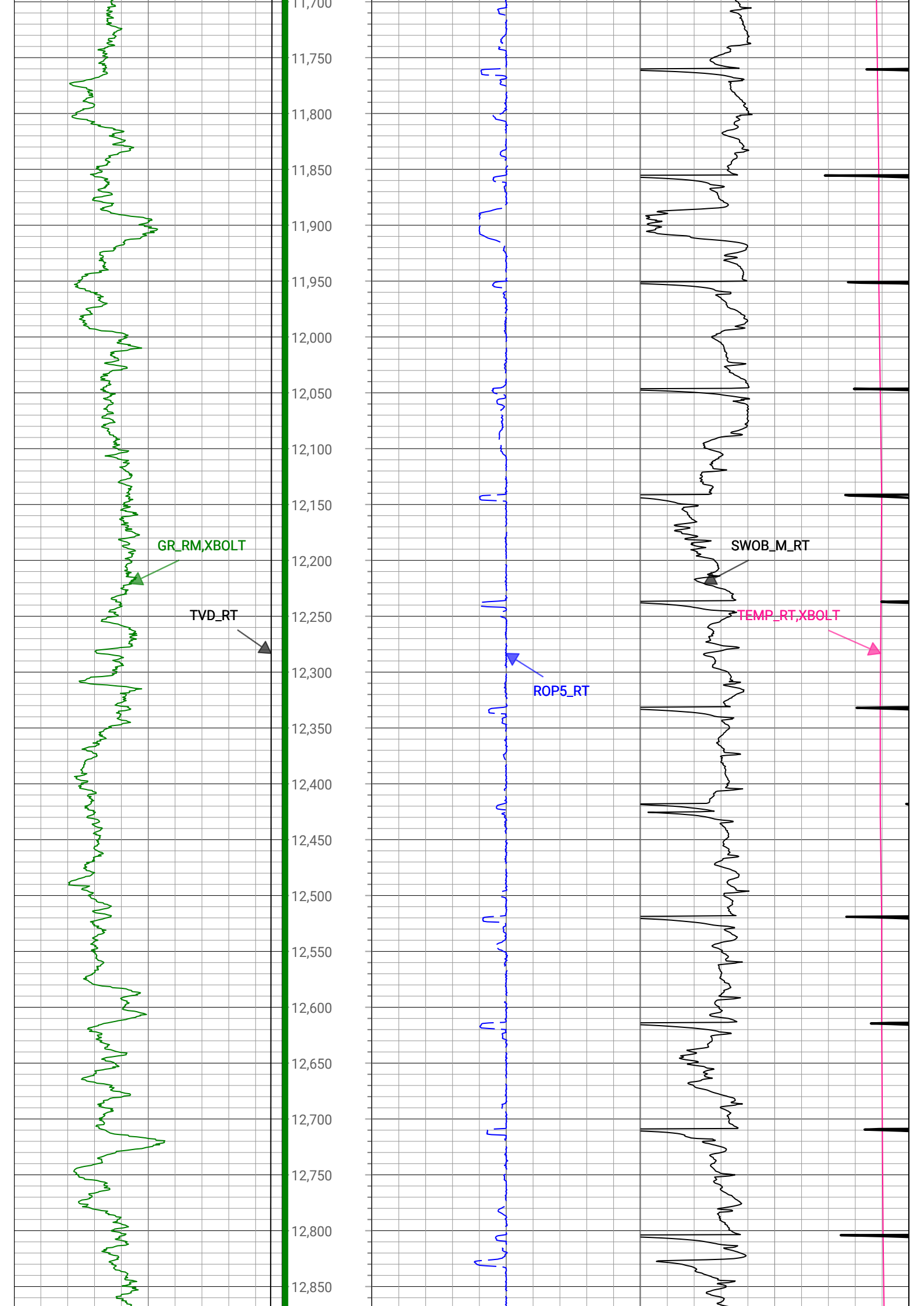


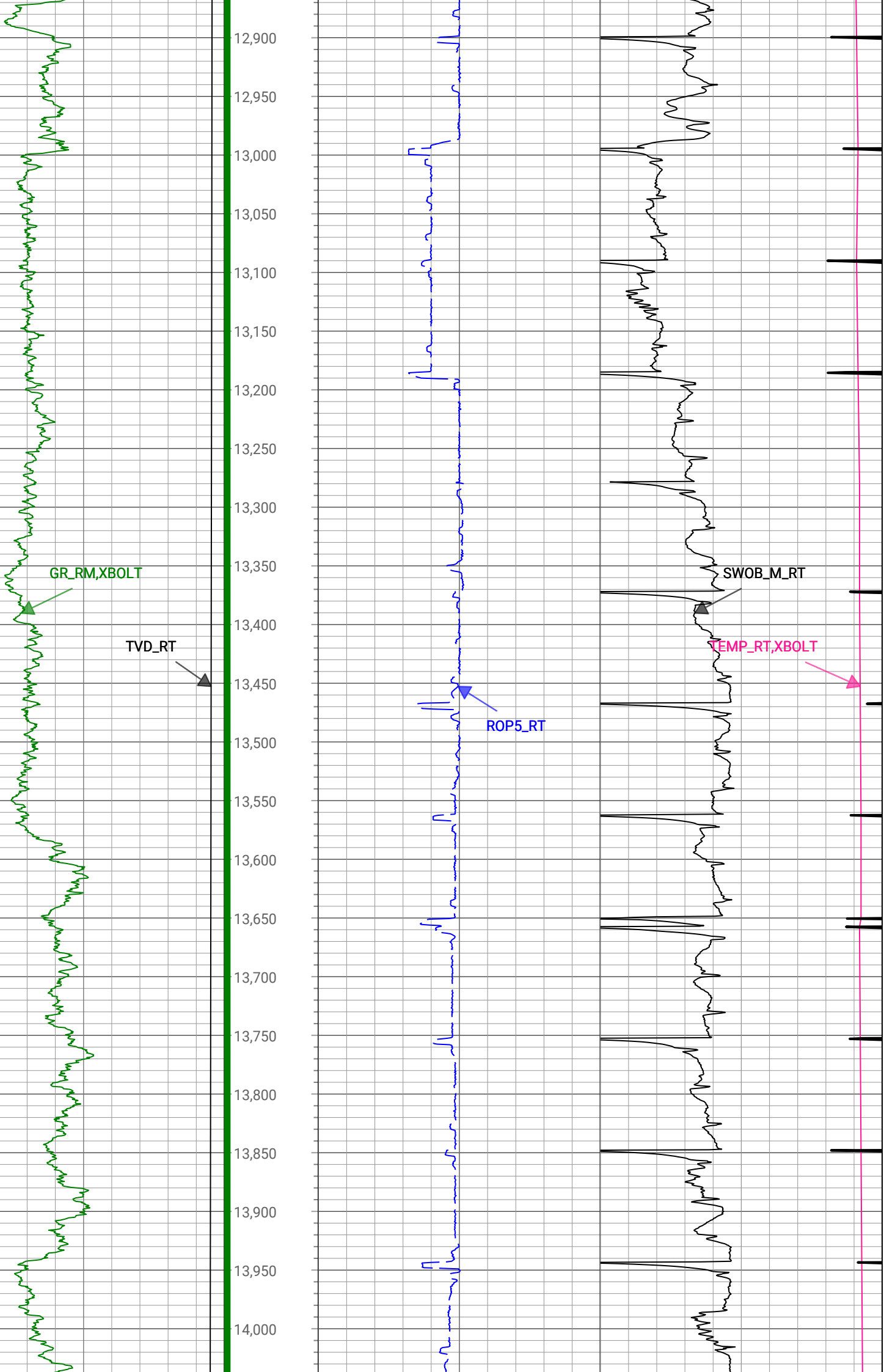


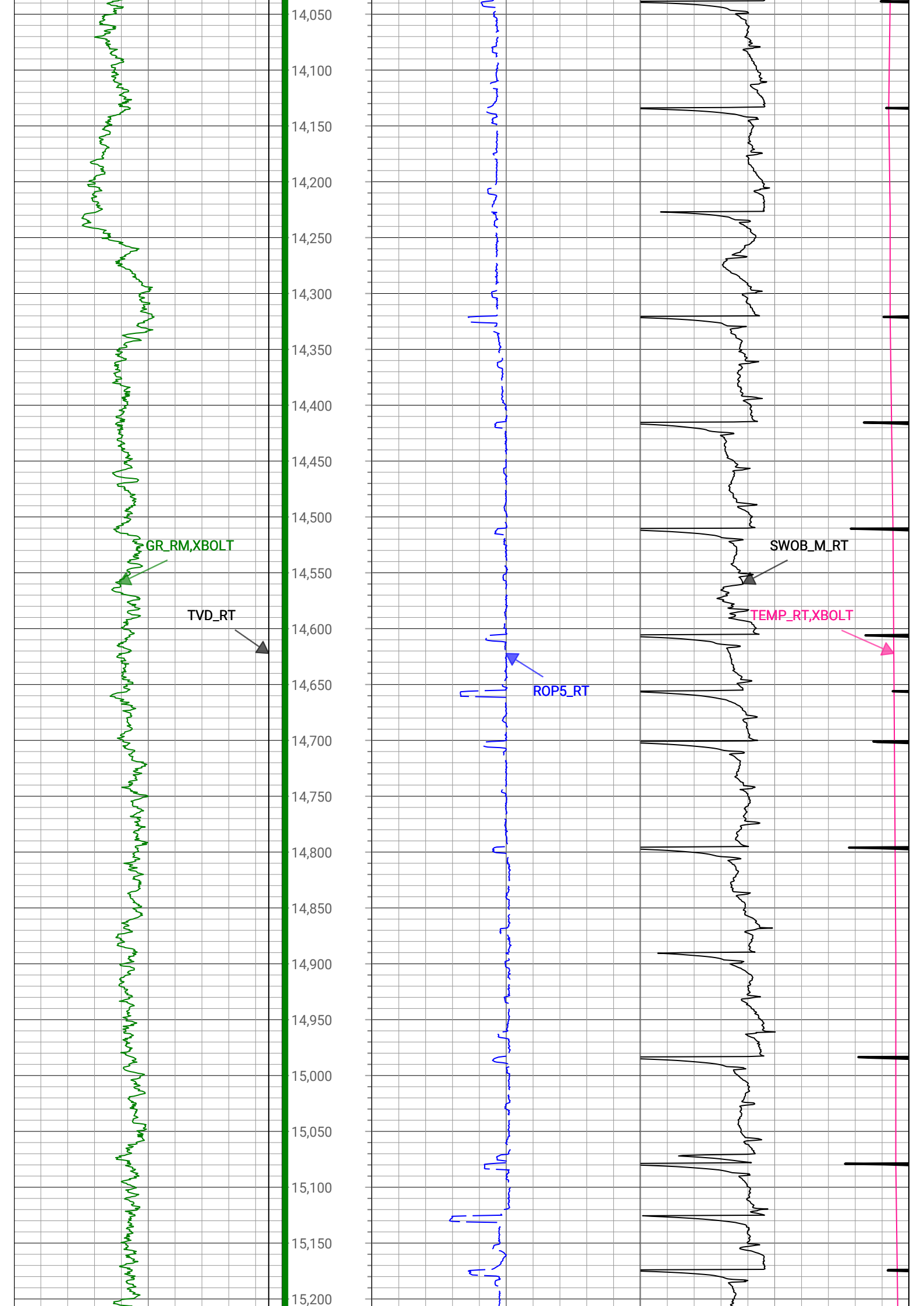


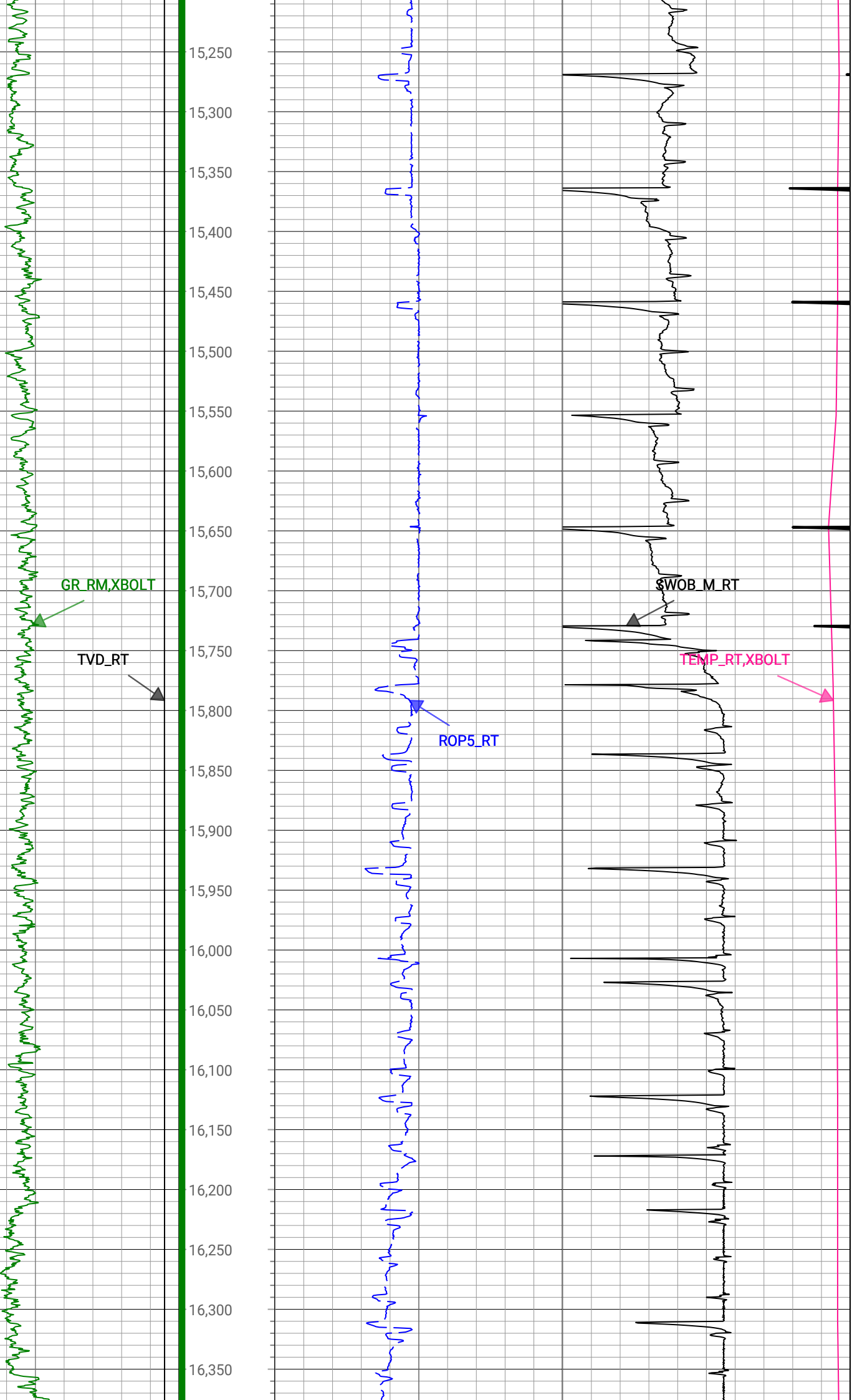


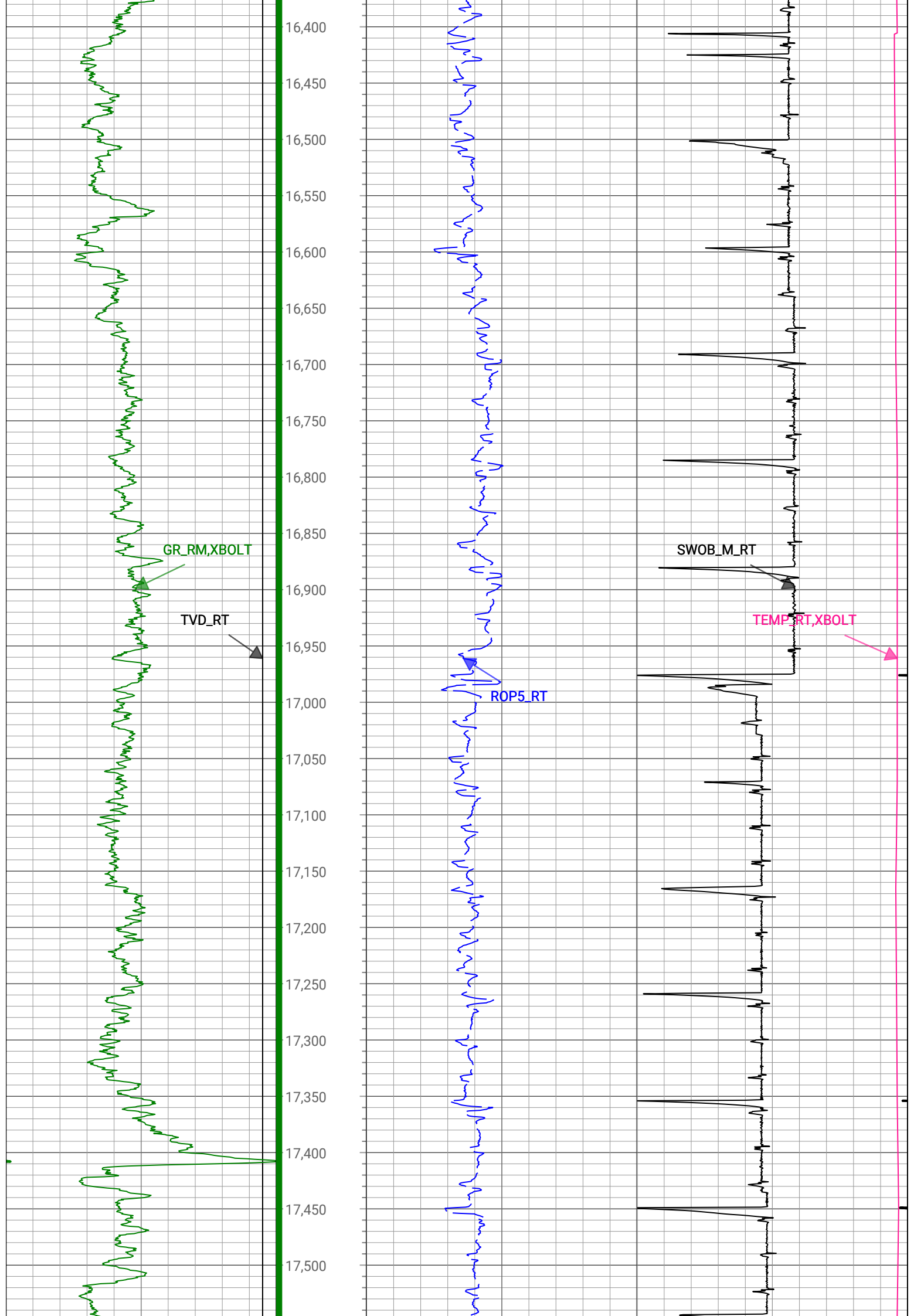


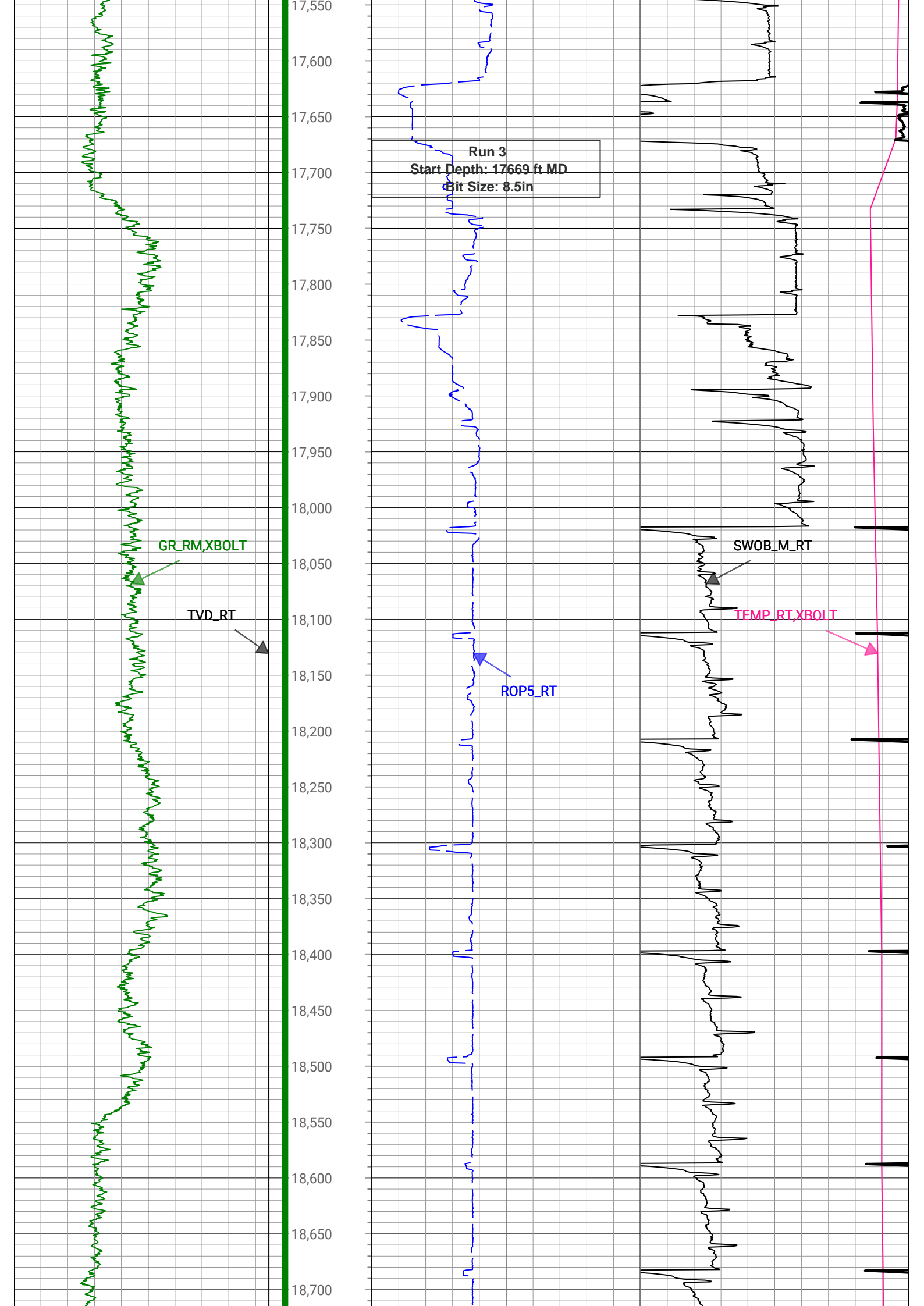


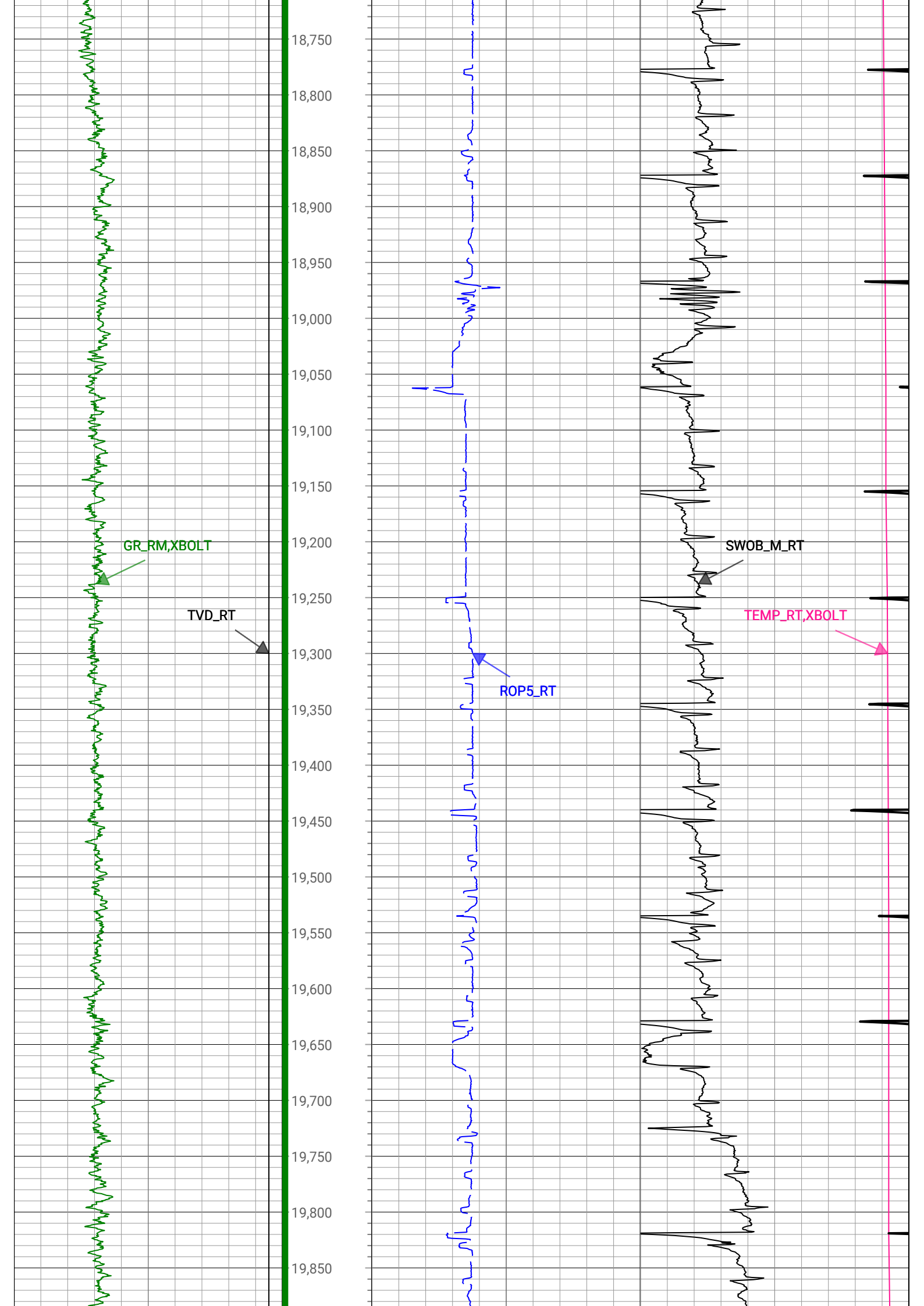


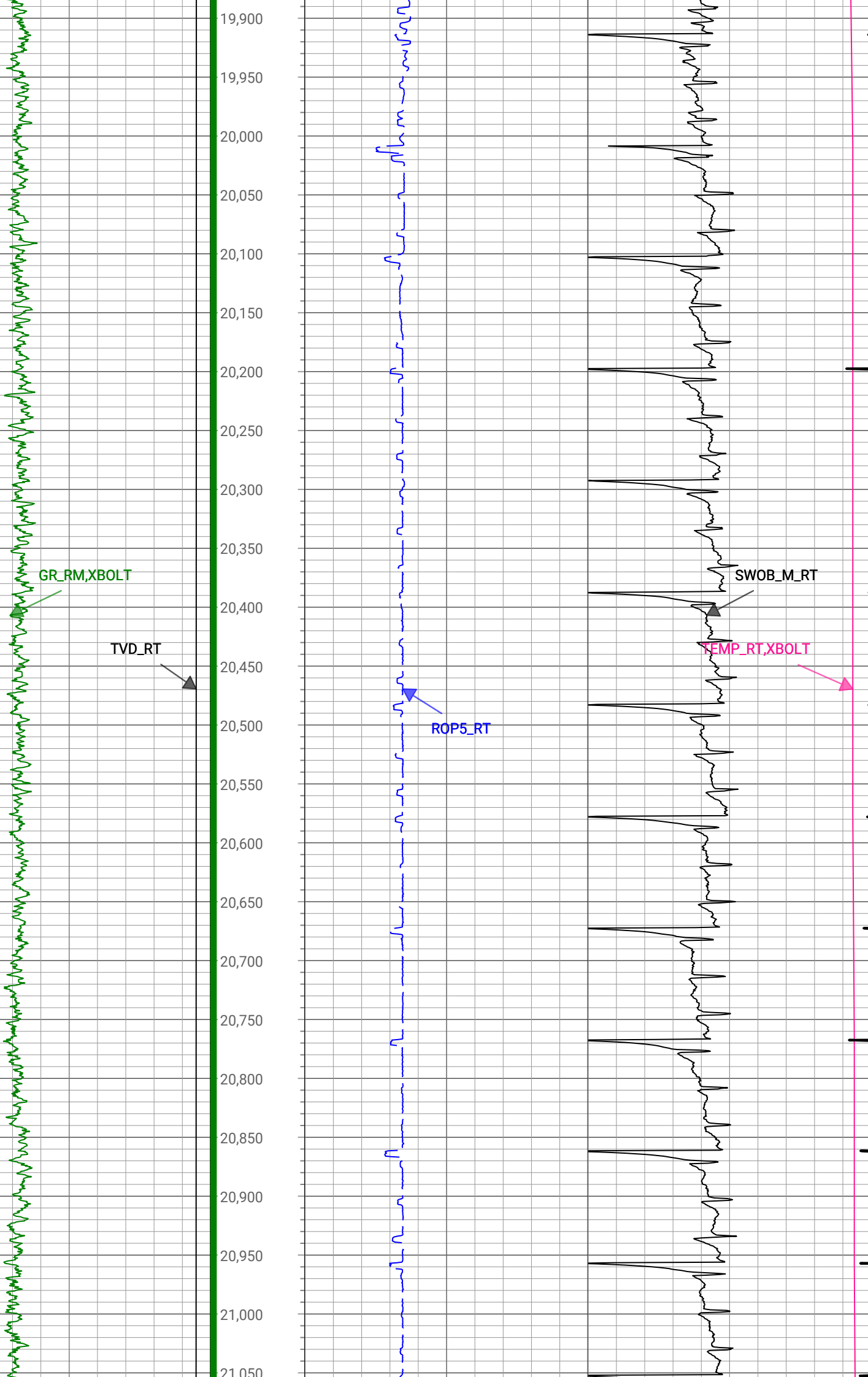


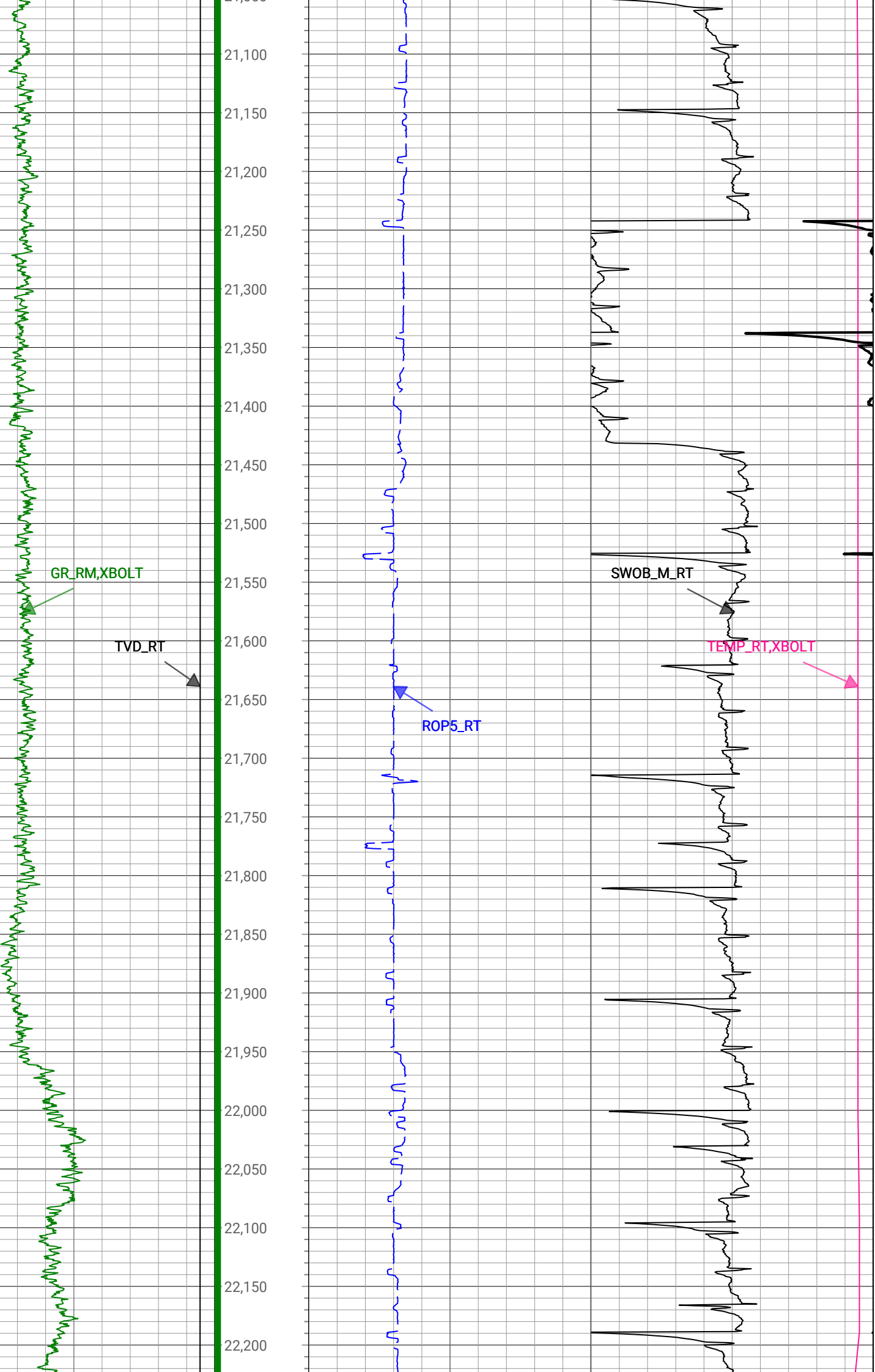


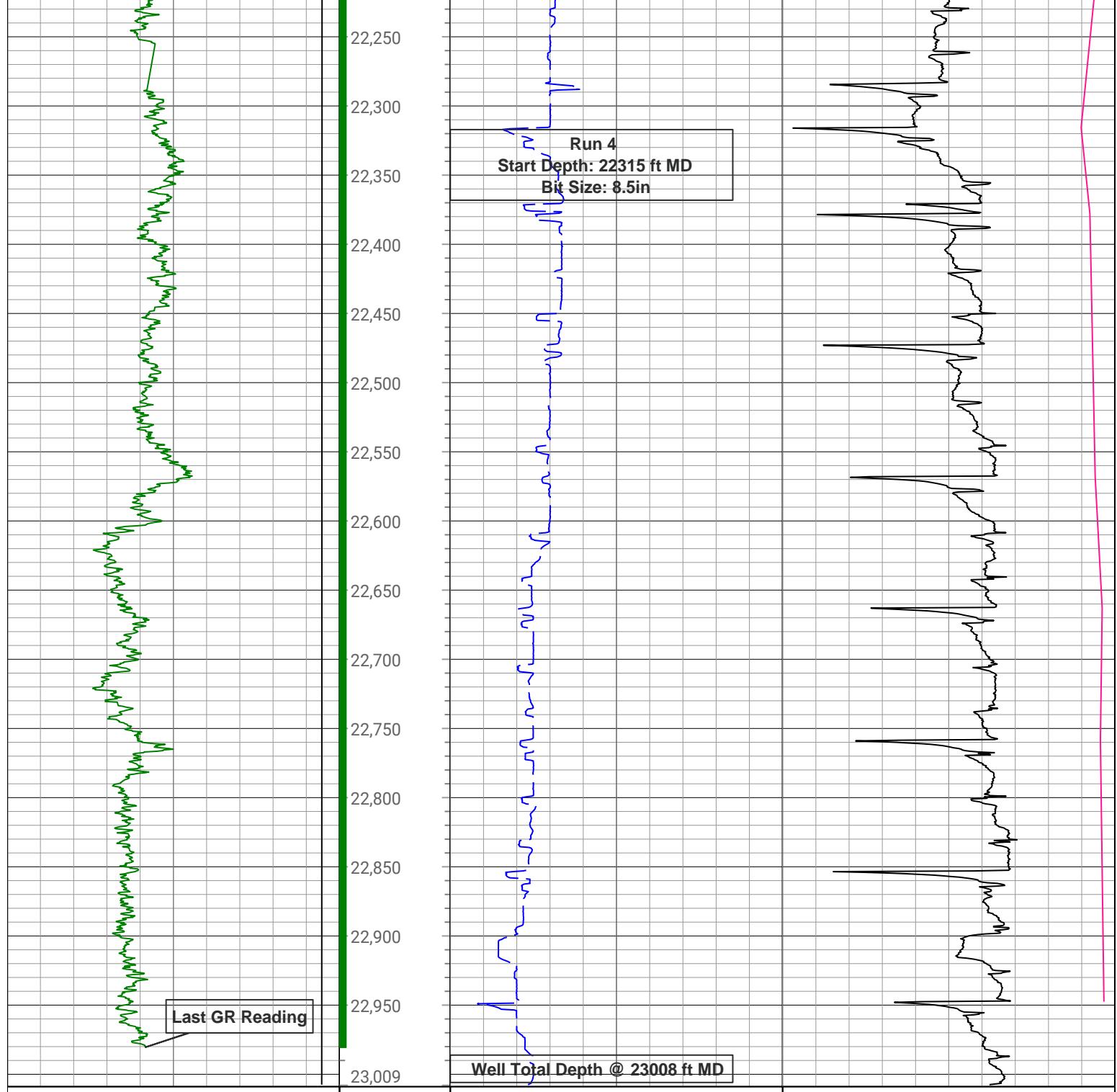












1,500	TVD_RT	7,500	Depth (ft)	0	ROP5_RT	1,000	0	TEMP_RT,XBOLT	300
ft, Borehole				ft/h, Borehole			degF, Borehole		
0	GR_RM,XBOLT	300					0	SWOB_M_RT	50
gAPI, Borehole						1000 lbm, Borehole			

Description: Xbolt GAMMA RAY Format: XBOLT_PDC Index Scale: 1in/100ft Index Unit: ft Index Type: Measured Depth
 Creation Date: 12-May-2023

Survey Record

Survey Calculation

North Reference: True North

Tie In Point

Measured Depth:	0 (ft)	Inclination:	0 (deg)	Azimuth:	0 (deg)
True Vertical Depth:	0 (ft)	North Displacement:	0 (ft)	East Displacement:	0 (ft)

D&I Inits - Run - 1

Geomagnetic Model:	HDGM 2023	Geomagnetic Date:	27-Apr-2023 00:00:00
Location B:	51515 (nT)	Location G:	999.003 (mgn)

Magnetic Dip:	66.49 (deg)	Magnetic Dec:	7.664 (deg)
Total Correction:	7.664		

D&I Inits - Run - 2			
Geomagnetic Model:	HDGM 2023	Geomagnetic Date:	25-Apr-2023 18:00:00
Location B:	51515 (nT)	Location G:	999.003 (mgn)
Magnetic Dip:	66.49 (deg)	Magnetic Dec:	7.664 (deg)
Total Correction:	7.664		

D&I Inits - Run - 3			
Geomagnetic Model:	HDGM 2023	Geomagnetic Date:	23-Apr-2023 18:00:00
Location B:	51515 (nT)	Location G:	999.003 (mgn)
Magnetic Dip:	66.49 (deg)	Magnetic Dec:	7.664 (deg)
Total Correction:	7.664		

D&I Inits - Run - 4			
Geomagnetic Model:	HDGM 2023	Geomagnetic Date:	23-Apr-2023 18:00:00
Location B:	51515 (nT)	Location G:	999.003 (mgn)
Magnetic Dip:	66.49 (deg)	Magnetic Dec:	7.664 (deg)
Total Correction:	7.664		

MD(ft)	Incl(deg)	Azim(deg)	TVD(ft)	V Sec(ft)	N/-S(ft)	E/-W(ft)	DLS (deg/100ft)	Closure Distance (ft)	Closure Azimuth (deg)	Tool Type
0	0	0	0	0.00	0	0	0.00			TIP
159.5	0.7	63.75	159.5	0.92	0.43	0.87	0.44	0.97	63.75	MWD
250.5	0.79	49.51	250.49	1.96	1.08	1.85	0.23	2.14	59.62	MWD
342.5	1.14	333.92	342.48	2.17	2.32	1.93	1.32	3.02	39.77	MWD
457.5	3.78	310.19	457.36	-0.82	5.79	-1.47	2.41	5.98	345.76	MWD
543.5	4.57	312.3	543.14	-5.03	9.93	-6.17	0.94	11.69	328.14	MWD
628.5	6.16	317.93	627.76	-9.93	15.59	-11.73	1.97	19.51	323.05	MWD
713.5	7.47	316.52	712.16	-15.93	22.99	-18.59	1.55	29.56	321.04	MWD
798.5	10.11	314.76	796.15	-23.95	32.25	-27.69	3.12	42.51	319.35	MWD
883.5	12.57	317.23	879.49	-34.13	44.3	-39.27	2.95	59.2	318.44	MWD
972.5	14.16	315.64	966.07	-46.58	59.19	-53.46	1.83	79.76	317.91	MWD
1057.5	14.68	315.12	1048.4	-59.69	74.25	-68.33	0.63	100.91	317.38	MWD
1142.5	16.53	315.12	1130.26	-73.94	90.46	-84.46	2.18	123.76	316.96	MWD
1227.5	18.91	318.28	1211.22	-89.45	109.31	-102.16	3.02	149.62	316.94	MWD
1315.5	18.03	318.46	1294.69	-105.55	130.15	-120.68	1	177.49	317.16	MWD
1400.5	19.26	318.1	1375.23	-121.28	150.43	-138.77	1.45	204.66	317.31	MWD
1485.5	19.96	319.16	1455.3	-137.65	171.84	-157.62	0.92	233.18	317.47	MWD
1570.5	18.99	317.05	1535.43	-154.11	192.94	-176.53	1.41	261.51	317.54	MWD
1655.5	17.32	315.12	1616.2	-170.24	212.03	-194.88	2.09	287.98	317.41	MWD
1694.5	16.88	313.53	1653.48	-177.5	220.04	-203.08	1.65	299.43	317.29	MWD
1782	16.8	313.34	1737.22	-193.87	237.47	-221.49	0.11	324.73	316.99	Manual
1877	13.35	321.66	1828.95	-208.57	255.5	-238.29	4.28	349.37	317	Manual
1972	16.57	324.66	1920.72	-220.95	275.16	-252.93	3.49	373.75	317.41	MWD
2067	16.59	318.22	2011.78	-235.37	296.32	-269.8	1.93	400.75	317.68	MWD
2162	16.15	316.89	2102.93	-251.14	316.08	-287.87	0.61	427.52	317.67	MWD
2257	16.63	316.57	2194.07	-267.25	335.6	-306.24	0.51	454.33	317.62	MWD
2351	17.27	316.24	2283.98	-283.83	355.45	-325.14	0.69	481.73	317.55	Manual
2446	17.29	315.55	2374.7	-301.11	375.71	-344.78	0.22	509.93	317.46	Manual
2541	16.87	314.12	2465.51	-318.6	395.38	-364.56	0.63	537.81	317.32	Manual
2636	17.41	314.27	2556.29	-336.39	414.9	-384.64	0.57	565.76	317.17	Manual

2731	18.17	313.9	2646.74	-354.88	435.09	-405.49	0.81	594.75	317.02	Manual
2825	17.82	314.15	2736.14	-373.4	455.27	-426.37	0.38	623.75	316.88	Manual
2920	17.86	314.29	2826.58	-391.88	475.57	-447.22	0.06	652.82	316.76	Manual
3015	17.66	314.49	2917.05	-410.22	495.84	-467.93	0.22	681.78	316.66	Manual
3110	16.99	313.3	3007.74	-428.31	515.46	-488.31	0.8	710.04	316.55	Manual
3204	17.68	314.51	3097.47	-446.21	534.89	-508.49	0.83	738.01	316.45	Manual
3299	17.02	314.18	3188.15	-464.15	554.69	-528.75	0.7	766.32	316.37	Manual
3394	16.65	314.18	3279.07	-481.64	573.86	-548.48	0.39	793.82	316.3	Manual
3489	16.83	313.39	3370.05	-499.18	592.8	-568.23	0.31	821.16	316.21	Manual
3583	17.56	313.18	3459.85	-517.18	611.85	-588.46	0.78	848.91	316.12	Manual
3678	17.76	314.01	3550.37	-535.73	631.72	-609.33	0.34	877.7	316.03	Manual
3773	16.95	314.26	3641.04	-553.76	651.45	-629.67	0.86	906.02	315.97	Manual
3867	17.42	313.31	3730.85	-571.56	670.67	-649.72	0.58	933.78	315.91	Manual
3962	17.47	313.96	3821.48	-589.87	690.32	-670.34	0.21	962.23	315.84	Manual
4057	17.46	313.87	3912.1	-608.1	710.1	-690.87	0.03	990.73	315.79	Manual
4152	17.76	313.58	4002.65	-626.54	729.96	-711.65	0.33	1019.45	315.73	Manual
4247	17.51	315.77	4093.18	-644.65	750.19	-732.11	0.75	1048.22	315.7	Manual
4342	17.22	315.84	4183.85	-662.04	770.52	-751.88	0.31	1076.58	315.7	Manual
4436	17.73	315.23	4273.51	-679.47	790.66	-771.65	0.58	1104.8	315.7	Manual
4532	17.42	315.28	4365.03	-697.47	811.25	-792.06	0.32	1133.79	315.69	Manual
4627	17.8	315.41	4455.58	-715.28	831.7	-812.26	0.4	1162.53	315.68	Manual
4722	17.21	315.78	4546.18	-732.9	852.11	-832.25	0.63	1191.1	315.68	Manual
4816	17.92	315.16	4635.8	-750.44	872.33	-852.15	0.78	1219.47	315.67	Manual
4911	17.45	315.56	4726.31	-768.32	892.86	-872.43	0.51	1248.33	315.66	Manual
5005	17.96	314.75	4815.86	-786.12	913.13	-892.59	0.6	1276.92	315.65	Manual
5099	17.6	315.13	4905.37	-804.07	933.4	-912.9	0.4	1305.62	315.64	Manual
5193	18.03	315.11	4994.86	-821.98	953.78	-933.2	0.46	1334.37	315.62	Manual
5288	16.84	315.88	5085.49	-839.57	974.08	-953.15	1.28	1362.84	315.62	Manual
5382	17.44	314.53	5175.32	-856.8	993.73	-972.67	0.77	1390.54	315.61	Manual
5477	17.62	314.77	5265.91	-874.81	1013.84	-993.03	0.2	1419.15	315.59	Manual
5570	17.09	314.88	5354.67	-892.2	1033.4	-1012.71	0.57	1446.89	315.58	Manual
5665	17.32	314.75	5445.42	-909.82	1053.2	-1032.64	0.25	1474.98	315.56	Manual
5760	17.68	315.49	5536.02	-927.61	1073.44	-1052.8	0.45	1503.55	315.56	Manual
5855	17.61	314.81	5626.55	-945.54	1093.86	-1073.11	0.23	1532.35	315.55	Manual
5949	17.61	315.08	5716.15	-963.32	1113.95	-1093.23	0.09	1560.78	315.54	Manual
6043	17.29	314.47	5805.82	-981.01	1133.8	-1113.24	0.39	1588.97	315.52	Manual
6138	17.66	314.68	5896.44	-998.99	1153.82	-1133.56	0.4	1617.49	315.51	Manual
6233	17.73	314.64	5986.94	-1017.16	1174.12	-1154.1	0.07	1646.36	315.49	Manual
6328	17.59	314.41	6077.47	-1035.35	1194.33	-1174.65	0.16	1675.18	315.48	Manual
6423	17.25	314.48	6168.11	-1053.32	1214.24	-1194.95	0.36	1703.61	315.46	Manual
6517	17.76	314.75	6257.76	-1071.13	1234.1	-1215.08	0.55	1731.89	315.45	Manual
6612	17.29	314.65	6348.35	-1089.11	1254.23	-1235.41	0.5	1760.49	315.43	Manual
6707	15.92	321.96	6439.39	-1104.84	1274.41	-1253.49	2.63	1787.56	315.47	Manual
6802	14.1	344.49	6531.23	-1113.54	1295.84	-1264.62	6.39	1810.66	315.7	Manual
6896	14.16	12.7	6622.49	-1111.61	1318.12	-1265.15	7.26	1827.03	316.17	Manual
6991	18.26	32.23	6713.76	-1098.52	1342.07	-1254.65	7.12	1837.2	316.93	Manual
7086	23.31	50.64	6802.64	-1073.43	1366.62	-1232.14	8.63	1840.06	317.96	Manual
7180	28.44	65.69	6887.28	-1036.48	1387.67	-1197.3	8.83	1832.8	319.21	Manual
7274	36.8	69.04	6966.39	-987.85	1406.99	-1150.53	9.1	1817.51	320.73	Manual
7369	45.9	74.15	7047.71	-936.59	1426.59	-1091.96	10.11	1795.93	322.59	Manual

7369	45.8	74.15	7037.71	-926.59	1426.52	-1091.06	10.11	1795.93	322.59	Manual
7463	53.78	76.77	7098.35	-855.59	1444.43	-1021.61	8.75	1769.2	324.73	Manual
7558	62.38	77.93	7148.54	-775.52	1462.03	-943	9.11	1739.77	327.18	Manual
7654	70.75	81.29	7186.69	-687.74	1477.82	-856.45	9.29	1708.05	329.91	Manual
7749	78.98	83.44	7211.48	-596.14	1489.96	-765.63	8.93	1675.16	332.8	Manual
7843	84.53	84.17	7224.95	-503.15	1499.99	-673.18	5.95	1644.13	335.83	Manual
7938	88.68	83.96	7230.58	-408.34	1509.79	-578.88	4.37	1616.97	339.02	Manual
8033	89.42	88.25	7232.15	-313.47	1516.24	-484.14	4.58	1591.66	342.29	Manual
8128	89.75	87.51	7232.84	-218.73	1519.76	-389.2	0.85	1568.8	345.64	Manual
8222	89.64	86.23	7233.34	-124.88	1524.89	-295.35	1.37	1553.23	349.04	Manual
8317	89.53	86.13	7234.03	-29.98	1531.22	-200.56	0.16	1544.3	352.54	Manual
8411	89.42	86.29	7234.89	63.93	1537.43	-106.77	0.21	1541.14	356.03	Manual
8506	90.35	85.81	7235.08	158.84	1543.98	-12	1.1	1544.02	359.55	Manual
8601	90.15	86.01	7234.67	253.77	1550.75	82.76	0.3	1552.96	3.05	Manual
8696	90.32	87.97	7234.28	348.6	1555.74	177.62	2.07	1565.85	6.51	Manual
8791	90.64	88.27	7233.48	443.31	1558.86	272.57	0.46	1582.51	9.92	Manual
8885	89.99	88.64	7232.96	536.98	1561.39	366.53	0.8	1603.84	13.21	Manual
8980	90.14	88.82	7232.86	631.6	1563.5	461.51	0.25	1630.19	16.45	Manual
9075	89.94	88.57	7232.79	726.23	1565.66	556.48	0.34	1661.62	19.57	Manual
9170	90.62	88.63	7232.33	820.88	1567.98	651.45	0.72	1697.93	22.56	Manual
9265	90.57	88.71	7231.34	915.51	1570.19	746.42	0.1	1738.57	25.43	Manual
9360	90.76	88.77	7230.24	1010.13	1572.28	841.39	0.21	1783.25	28.15	Manual
9454	90.82	88.7	7228.94	1103.75	1574.35	935.36	0.1	1831.25	30.72	Manual
9549	90.39	88.45	7227.94	1198.39	1576.71	1030.33	0.52	1883.51	33.16	Manual
9644	90.72	88.66	7227.02	1293.04	1579.11	1125.29	0.41	1939.04	35.47	Manual
9739	90.4	88.65	7226.09	1387.67	1581.34	1220.26	0.34	1997.42	37.66	Manual
9834	90.25	88.59	7225.55	1482.31	1583.63	1315.23	0.17	2058.57	39.71	Manual
9929	88.48	88.94	7226.6	1576.93	1585.67	1410.2	1.9	2122.03	41.65	Manual
10023	88.62	90.18	7228.98	1670.39	1586.4	1504.17	1.33	2186.13	43.48	Manual
10117	89.05	88.93	7230.89	1763.87	1587.13	1598.14	1.41	2252.34	45.2	Manual
10212	89.96	88.78	7231.71	1858.48	1589.02	1693.12	0.97	2321.99	46.82	Manual
10307	88.65	89.85	7232.87	1953	1590.16	1788.1	1.78	2392.89	48.35	Manual
10402	88.63	89.88	7235.12	2047.42	1590.38	1883.07	0.04	2464.81	49.82	Manual
10497	88.61	89.63	7237.41	2141.85	1590.79	1978.04	0.26	2538.36	51.19	Manual
10592	88.95	89.95	7239.43	2236.29	1591.14	2073.02	0.49	2613.26	52.49	Manual
10687	87.92	89.74	7242.03	2330.69	1591.39	2167.98	1.11	2689.37	53.72	Manual
10782	88.36	89.92	7245.11	2425.09	1591.68	2262.93	0.5	2766.64	54.88	Manual
10876	88.36	89.9	7247.8	2518.49	1591.82	2356.9	0.02	2844.09	55.97	Manual
10971	88.52	90.04	7250.39	2612.88	1591.87	2451.86	0.22	2923.3	57.01	Manual
11066	88.54	90.11	7252.82	2707.25	1591.75	2546.83	0.08	3003.33	57.99	Manual
11161	88.55	89.85	7255.23	2801.64	1591.78	2641.8	0.27	3084.29	58.93	Manual
11255	89.76	87.85	7256.62	2895.24	1593.67	2735.76	2.49	3166.1	59.78	Manual
11350	88.65	89.36	7257.94	2989.87	1595.98	2830.72	1.97	3249.64	60.59	Manual
11445	88.36	89.93	7260.42	3084.32	1596.57	2925.69	0.67	3332.97	61.38	Manual
11539	88.71	89.95	7262.82	3177.72	1596.67	3019.66	0.37	3415.8	62.13	Manual
11634	88.65	89.73	7265.01	3272.14	1596.93	3114.63	0.24	3500.16	62.85	Manual
11729	91.87	88.95	7264.58	3366.66	1598.03	3209.61	3.49	3585.43	63.53	Manual
11824	92.06	89.1	7261.32	3461.19	1599.64	3304.54	0.25	3671.35	64.17	Manual
11919	91.96	89.52	7257.99	3555.67	1600.79	3399.47	0.45	3757.52	64.78	Manual
12014	91.5	88.36	7255.12	3650.22	1602.54	3494.41	1.31	3844.35	65.36	Manual

12109	91.49	88.52	7252.64	3744.85	1605.13	3589.35	0.17	3931.9	65.91	Manual
12204	91.29	89.46	7250.34	3839.41	1606.8	3684.3	1.01	4019.44	66.44	Manual
12299	91.53	89.8	7248	3933.87	1607.42	3779.27	0.44	4106.9	66.96	Manual
12393	91.15	90.73	7245.8	4027.21	1606.98	3873.24	1.07	4193.38	67.47	Manual
12488	90.92	90.35	7244.09	4121.51	1606.09	3968.22	0.47	4280.92	67.97	Manual
12583	91.22	90.55	7242.31	4215.83	1605.34	4063.2	0.38	4368.84	68.44	Manual
12678	91.08	90.75	7240.41	4310.1	1604.26	4158.18	0.26	4456.92	68.9	Manual
12772	91.52	90.54	7238.27	4403.38	1603.2	4252.15	0.52	4544.34	69.34	Manual
12867	91.78	90.61	7235.54	4497.64	1602.25	4347.1	0.28	4632.98	69.77	Manual
12962	91.79	90.69	7232.58	4591.89	1601.17	4442.05	0.08	4721.82	70.18	Manual
13057	91.59	90.41	7229.78	4686.16	1600.26	4537	0.36	4810.95	70.57	Manual
13152	91.84	90.46	7226.93	4780.45	1599.54	4631.96	0.27	4900.37	70.95	Manual
13246	92.2	90.5	7223.62	4873.73	1598.75	4725.9	0.39	4989	71.31	Manual
13341	92.41	90.83	7219.8	4967.94	1597.65	4820.81	0.41	5078.66	71.66	Manual
13436	92.07	90.45	7216.09	5062.16	1596.59	4915.74	0.54	5168.52	72.01	Manual
13531	91.56	90.56	7213.08	5156.44	1595.76	5010.68	0.55	5258.65	72.33	Manual
13626	92.35	90.52	7209.84	5250.69	1594.86	5105.62	0.83	5348.92	72.65	Manual
13721	91.73	90.47	7206.45	5344.96	1594.04	5200.56	0.65	5439.37	72.96	Manual
13816	91.57	90.34	7203.72	5439.26	1593.37	5295.52	0.22	5530.04	73.25	Manual
13911	92.23	90.23	7200.57	5533.57	1592.9	5390.46	0.7	5620.89	73.54	Manual
14006	91.59	90.12	7197.4	5627.9	1592.61	5485.41	0.68	5711.93	73.81	Manual
14101	90.68	90.66	7195.52	5722.22	1591.96	5580.39	1.11	5803.02	74.08	Manual
14195	90.42	90.45	7194.62	5815.54	1591.05	5674.38	0.36	5893.22	74.34	Manual
14290	90.22	90.33	7194.09	5909.88	1590.4	5769.37	0.25	5984.57	74.59	Manual
14384	90.41	90.05	7193.57	6003.27	1590.09	5863.37	0.36	6075.16	74.83	Manual
14479	89.5	90.37	7193.65	6097.64	1589.74	5958.37	1.02	6166.8	75.06	Manual
14574	89.92	90.21	7194.13	6192	1589.26	6053.37	0.47	6258.52	75.29	Manual
14669	90.11	89.82	7194.1	6286.42	1589.24	6148.37	0.46	6350.44	75.51	Manual
14763	90.05	89.09	7193.97	6379.94	1590.13	6242.36	0.78	6441.71	75.71	Manual
14858	90.15	89.99	7193.81	6474.43	1590.89	6337.36	0.95	6533.99	75.91	Manual
14953	90.36	89.99	7193.38	6568.85	1590.91	6432.36	0.22	6626.18	76.11	Manual
15048	89.95	89.72	7193.13	6663.29	1591.15	6527.36	0.52	6718.49	76.3	Manual
15143	90.41	89.96	7192.83	6757.74	1591.42	6622.36	0.55	6810.89	76.49	Manual
15237	90.17	89.82	7192.35	6851.18	1591.6	6716.35	0.3	6902.36	76.67	Manual
15332	89.89	89.63	7192.3	6945.65	1592.05	6811.35	0.36	6994.94	76.84	Manual
15426	89.89	89.7	7192.48	7039.13	1592.6	6905.35	0.07	7086.63	77.01	Manual
15521	89.82	89.47	7192.72	7133.62	1593.29	7000.35	0.25	7179.38	77.18	Manual
15616	89.75	89.35	7193.08	7228.14	1594.27	7095.34	0.15	7272.25	77.34	Manual
15711	90.09	89.53	7193.21	7322.66	1595.2	7190.34	0.4	7365.16	77.49	Manual
15806	89.92	89.6	7193.2	7417.15	1595.92	7285.33	0.19	7458.09	77.64	Manual
15900	89.5	89.46	7193.68	7510.65	1596.69	7379.33	0.47	7550.1	77.79	Manual
15995	89.49	89.9	7194.52	7605.12	1597.22	7474.32	0.46	7643.08	77.94	Manual
16090	89.68	89.22	7195.2	7699.62	1597.95	7569.32	0.74	7736.15	78.08	Manual
16185	90.01	89.62	7195.46	7794.13	1598.91	7664.31	0.55	7829.32	78.22	Manual
16280	89.81	89.67	7195.61	7888.61	1599.5	7759.31	0.22	7922.46	78.35	Manual
16375	90.02	89.78	7195.75	7983.08	1599.96	7854.31	0.25	8015.61	78.49	Manual
16470	89.89	89.45	7195.83	8077.57	1600.59	7949.31	0.37	8108.85	78.62	Manual
16565	89.92	89.58	7195.98	8172.07	1601.4	8044.3	0.14	8202.15	78.74	Manual
16659	90.06	89.63	7196	8265.56	1602.05	8138.3	0.16	8294.49	78.86	Manual
16754	90.12	89.89	7195.85	8360.02	1602.45	8233.3	0.28	8387.79	78.99	Manual

16849	89.97	89.86	7195.78	8454.46	1602.65	8328.3	0.16	8481.1	79.11	Manual
16944	90.05	89.76	7195.76	8548.91	1602.97	8423.3	0.13	8574.47	79.23	Manual
17039	90.15	89.76	7195.59	8643.37	1603.37	8518.3	0.11	8667.88	79.34	Manual
17134	90.05	89.64	7195.43	8737.84	1603.86	8613.3	0.16	8761.35	79.45	Manual
17228	90.15	89.48	7195.26	8831.34	1604.58	8707.29	0.2	8853.91	79.56	Manual
17323	90.23	89.49	7194.95	8925.85	1605.44	8802.29	0.08	8947.5	79.66	Manual
17418	89.82	89.73	7194.91	9020.34	1606.09	8897.29	0.5	9041.09	79.77	Manual
17512	90.24	89.3	7194.86	9113.84	1606.88	8991.28	0.64	9133.74	79.87	Manual
17607	91.02	89.03	7193.81	9208.4	1608.27	9086.27	0.87	9227.5	79.96	Manual
17702	89.9	89.03	7193.05	9302.98	1609.87	9181.25	1.18	9321.32	80.05	Manual
17797	90.18	88.81	7192.98	9397.57	1611.66	9276.23	0.37	9415.2	80.14	Manual
17891	89.75	90.2	7193.04	9491.08	1612.48	9370.23	1.55	9507.96	80.24	Manual
17986	89.9	89.91	7193.33	9585.49	1612.38	9465.23	0.34	9601.58	80.33	Manual
18081	89.55	90.05	7193.79	9679.91	1612.42	9560.22	0.4	9695.25	80.43	Manual
18176	89.72	90.02	7194.39	9774.32	1612.36	9655.22	0.18	9788.92	80.52	Manual
18271	89.47	89.84	7195.06	9868.74	1612.48	9750.22	0.32	9882.65	80.61	Manual
18366	89.89	90.06	7195.6	9963.17	1612.56	9845.22	0.5	9976.41	80.7	Manual
18461	89.93	90.31	7195.74	10057.55	1612.25	9940.22	0.27	10070.12	80.79	Manual
18556	89.81	90.4	7195.96	10151.9	1611.66	10035.22	0.16	10163.81	80.88	Manual
18651	89.74	90.25	7196.33	10246.26	1611.12	10130.21	0.17	10257.53	80.96	Manual
18745	89.85	90.43	7196.67	10339.61	1610.57	10224.21	0.22	10350.29	81.05	Manual
18840	89.72	90.32	7197.03	10433.96	1609.95	10319.21	0.18	10444.04	81.13	Manual
18935	89.99	90.04	7197.27	10528.34	1609.65	10414.21	0.41	10537.87	81.21	Manual
19029	89.72	90.02	7197.5	10621.76	1609.6	10508.21	0.29	10630.77	81.29	Manual
19124	90.12	89.92	7197.64	10716.18	1609.65	10603.21	0.43	10724.69	81.37	Manual
19219	90.19	89.87	7197.38	10810.62	1609.82	10698.21	0.09	10818.65	81.44	Manual
19409	90.05	89.72	7196.98	10999.53	1610.5	10888.2	0.11	11006.67	81.59	Manual
19503	90.26	90.01	7196.73	11092.97	1610.72	10982.2	0.38	11099.69	81.66	Manual
19598	89.92	89.71	7196.58	11187.42	1610.95	11077.2	0.48	11193.73	81.73	Manual
19693	90.14	89.67	7196.53	11281.89	1611.47	11172.2	0.24	11287.82	81.79	Manual
19788	90.12	89.59	7196.31	11376.37	1612.08	11267.2	0.09	11381.94	81.86	Manual
19882	90.19	89.93	7196.06	11469.84	1612.48	11361.2	0.37	11475.06	81.92	Manual
19977	90.12	90.03	7195.8	11564.26	1612.51	11456.2	0.13	11569.12	81.99	Manual
20072	90.29	90.32	7195.46	11658.64	1612.22	11551.2	0.35	11663.16	82.05	Manual
20167	90.4	90.17	7194.89	11753.01	1611.81	11646.19	0.2	11757.2	82.12	Manual
20261	90.29	90.33	7194.32	11846.39	1611.4	11740.19	0.21	11850.26	82.18	Manual
20356	90.33	89.91	7193.81	11940.78	1611.2	11835.19	0.44	11944.36	82.25	Manual
20451	90.31	89.93	7193.28	12035.21	1611.34	11930.19	0.03	12038.51	82.31	Manual
20546	90.18	89.99	7192.87	12129.63	1611.4	12025.19	0.15	12132.67	82.37	Manual
20641	90.4	90.26	7192.39	12224.03	1611.2	12120.18	0.37	12226.81	82.43	Manual
20736	90.24	89.84	7191.86	12318.43	1611.11	12215.18	0.47	12320.97	82.49	Manual
20830	90.15	89.91	7191.54	12411.88	1611.32	12309.18	0.12	12414.2	82.54	Manual
20925	90.17	89.8	7191.28	12506.32	1611.56	12404.18	0.12	12508.43	82.6	Manual
21020	90.37	89.71	7190.83	12600.78	1611.96	12499.18	0.23	12602.69	82.65	Manual
21115	90.26	89.86	7190.31	12695.24	1612.32	12594.18	0.2	12696.96	82.7	Manual
21210	90.29	89.49	7189.85	12789.71	1612.86	12689.17	0.39	12791.27	82.76	Manual
21305	90.32	89.91	7189.34	12884.18	1613.36	12784.17	0.44	12885.57	82.81	Manual
21400	90.29	89.32	7188.84	12978.66	1614	12879.17	0.62	12979.91	82.86	Manual
21495	90.43	89.64	7188.24	13073.17	1614.86	12974.16	0.37	13074.27	82.91	Manual
21590	90.48	89.79	7187.49	13167.63	1615.33	13069.16	0.17	13168.61	82.95	Manual

21685	90.23	89.66	7186.9	13262.1	1615.79	13164.15	0.3	13262.95	83	Manual
21780	90.24	89.72	7186.51	13356.57	1616.3	13259.15	0.06	13357.3	83.05	Manual
21874	90.09	89.39	7186.24	13450.07	1617.03	13353.15	0.39	13450.7	83.1	Manual
21969	90.19	89.75	7186.01	13544.56	1617.74	13448.15	0.39	13545.1	83.14	Manual
22064	90.39	89.95	7185.53	13639.01	1617.99	13543.14	0.3	13639.45	83.19	Manual
22158	90.37	90	7184.9	13732.43	1618.03	13637.14	0.06	13732.8	83.23	Manual
22347	90.4	90.17	7183.63	13920.24	1617.75	13826.14	0.09	13920.46	83.33	Manual
22442	90.46	91.31	7182.92	14014.51	1616.53	13921.13	1.2	14014.67	83.38	Manual
22632	90.4	90.67	7181.49	14202.94	1613.24	14111.09	0.34	14203.01	83.48	Manual
22727	90.53	89.78	7180.72	14297.32	1612.87	14206.09	0.95	14297.35	83.52	Manual
22822	90.44	90.52	7179.92	14391.7	1612.62	14301.08	0.78	14391.72	83.57	Manual
23008	90.44	90.52	7178.49	14576.36	1610.93	14487.07	0	14576.36	83.65	Manual

Company: PDC Energy Inc

Well: Spinney 01N

Field Name: Wattenberg

Country Name: United States

State Name: Colorado

County Name: Weld



Xbolt GAMMA RAY
 1in/100ft Measured Depth
 Final Print
 Recorded Mode