

Cement Post Job Report

Client: PDC Energy

Well Name: Spinney 1N

API #: 05-123-51636-00

Job Date: May 6, 2023

Job Type: New Well - 5.5" Production String

Cement Company & Contact: EXERO Well Integrity -
Cheve Meyer 720-239-3819



ROCK SOLID
WELL INTEGRITY
SOLUTIONS

TREATMENT REPORT

CLIENT	WELL	RIG	JOB TYPE	THREAD TYPE	WELLHEAD CONNECTION
PDC Energy	Spinney 1N	Patterson 272	Production	Buttress	5 1/2" HP Cement Head

WELL MD (FT)	WELL TVD (FT)	DEVIATION (DEG)	NUMBER OF STAGES	BHST (DEG)	BHCT (DEG)
23008	7245	90	1	230	230

PACKER/RETAINER/CIBP/DV TOOL DEPTHS	TOOL TYPE	TOP OF PERFS (FT)	BOTTOM OF PERFS (FT)	NUMBER OF HOLES
3490	PACKER			

CASING/TUBING/DP DETAILS								
STRING TYPE	GRADE	OD"	WT/FT	ID"	OH SIZE"	% EXCESS LEAD	% EXCESS TAIL	TOTAL DEPTH (FT)
Surface		9.625	36	8.921		0	0	1745
Production	P-110	5.5	20	4.78	8.5	0	15	23000
MAXIMUM CASING/TUBING/DP PSI			7500			MAXIMUM ANNULAR PSI		1500

Mud Type		Rotate Y,N		Circulation Data				Water Requirements (bbls)	
Mud Type	OBM	Rate (rpm)	No	Circulate Time (hrs)		6		Spacers	160
Mud ppg	10.7	Torque Val.		Circulation Rate (bpm)		10		Stage 1 Lead	121
Flow Temp	154	Time (hr)		Full Circulation ? (Y,N,P)		Yes		Stage 1 Tail	377
Vis. Sec/qt	50	Pipe Reciprocation		Gas Present (Y,N)		No	Units	0	Stage 2 Lead
PV (cP)	14	Recip Y,N	No	Centralizers/Plugs				Stage 2 Tail	
Yield Pt	6	Stroke (ft)		Quantity & Type		customer provided		Displacement	510
10 sec gel	3	Recip time		Top Plug/Type		customer provided		Wash up	20
10 min gel	5	Stuck ?		Bottom Plug/Type		customer provided		Total + 10% Safety	1307
30 min gel	7								

Preflush & Spacers		Stage 1 Lead: Class G		Stage 1 Tail: Class G		Stage 2 Lead		Stage 2 Tail		Displacement	
Spacer 1	Spacer	Density	12.9	Density	13.7	Density		Density		Fluid Type	Water
Density	12	Sacks	1381	Sacks	2391	Sacks		Sacks		Dens. ppg	8.34
Volume	160	Vol/bbbls	256.8	Vol/bbbls	583.4	Vol/bbbls	0.0	Vol/bbbls	0.0	Vol. bbl	510
Rate	12	Rate	11.5	Rate	11	Rate		Rate		Rate bpm	4.8
Spacer 2		Yield	1.13	Yield	1.37	Yield		Yield		Clay Stay?	No
Density		Gal/Sk	3.76	Gal/Sk	6.63	Gal/Sk		Gal/Sk		Biocide ?	Yes
Volume		% Excess	0	% Excess	15	% Excess		% Excess		Slow @ bbl	490
Rate		TOL (ft)	2215	TOT (ft)	8490	TOL (ft)		TOT (ft)		Bump PSI	4000

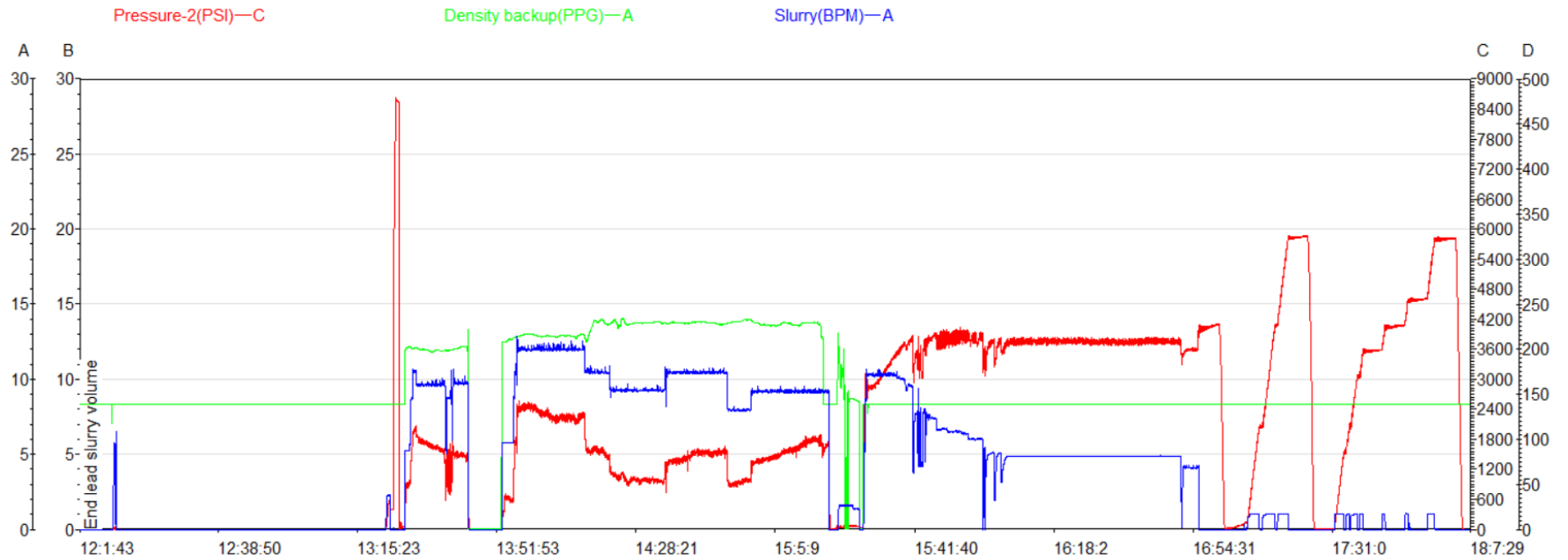
Final Displacement (bbbls)	510
Bump Plug?	Yes
Final Bump Pressure (psi)	4000
Full Returns throughout job?	Full
Vol away/Time when returns lost	
Vol away when returns were regained	
Spacer to Surface?	Yes
Spacer volume returned (bbbls)	58
Cement to surface?	No
Cement volume to surface stage 1	
Cement volume to surface stage 2	

Surface Top Out Details-Pumped		Job Summary Additional Chems Used	
Cement Type		MFC 47 (gal)	70
Dens. ppg	NA	MFC 67 (gal)	168
Sacks qty	NA	Defoamer (gal)	40
Gal/sk	NA	Biocide (gal)	20
Yield	NA	Corr. Inhib (gal)	0
Calcium Chlor. Used?	NA	Fiber (lbs)	310
Top out pipe used ?	NA	Chloride (lbs)	0
Annulus holding?	NA	Retarder (lbs)	0
		Clay Stabilizer (gal)	0
		Other	

JOB LOG

CLIENT	WELL	RIG	JOB TYPE	START DATE	Ambient Conditions		
PDC Energy	Spinney 1N	Patterson 272	Production	5/6/2023	Temp / Hum / Air Press 68 Deg F / 16% / 24.88 in		
DATE (dd/mm)	TIME (hh:mm)	DENSITY (ppg)	RATE (bpm)	VOL. (bbl)	TOTAL VOL.	PRESSURE	TREATMENT COMMENTS
5/5/2023	11:30:00 AM						Crew called out, requested by 19:00.
5/5/2023	6:00:00 PM						Crew arrived on location.
5/6/2023	7:00:00 AM						Spotted equipment.
5/6/2023	7:30:00 AM						Crew rigged up.
5/6/2023	12:50:00 PM						Safety meeting with rig crew.
5/6/2023	1:16:00 PM	8.33	2.0	3	3	220	Filled lines for pressure test.
5/6/2023	1:19:00 PM					8300	Pressure tested lines. No leaks.
5/6/2023	1:22:00 PM	12	9.6	160	160	1850	Mixed and pumped spacer @ 12ppg, With fiber and surfactant.
5/6/2023	1:38:00 PM						Shutdown.
5/6/2023	1:43:00 PM						Drop bottom plug.
5/6/2023	1:48:00 PM	12.9	12.0	256	256	2500	Mixed and pumped lead cmt @ 12.9ppg. (1381sk, 1.04yld, 3.68gl/sk.) TOL 2215'.
5/6/2023	2:11:00 PM	13.7	9.0	584	584	1320	Mixed and pumped tail cmt @ 13.7ppg. (2391sk, 1.37yld, 6.63gl/sk.) TOT 8490'.
5/6/2023	3:11:00 PM	8.33	9.0	15	15	1470	Pumped sugar water.
5/6/2023	3:13:00 PM						Shutdown, washed pumps and lines.
5/6/2023	3:19:00 PM						Dropped top plug, verified by company man.
5/6/2023	3:22:00 AM	8.33	10.0	10	510	2900	Fresh water displacement with biocide.
5/6/2023	3:28:00 PM	8.33	10.0	50	510	3020	Fresh water displacement with biocide.
5/6/2023	3:33:00 PM	8.33	10.0	100	510	3530	Fresh water displacement with biocide.
5/6/2023	3:40:00 PM	8.33	7.4	150	510	3700	Fresh water displacement with biocide.
5/6/2023	3:47:00 PM	8.33	6.5	200	510	3750	Fresh water displacement with biocide.
5/6/2023	3:56:00 PM	8.33	5.0	250	510	3600	Fresh water displacement with biocide.
5/6/2023	4:07:00 PM	8.33	4.8	300	510	3650	Fresh water displacement with biocide.
5/6/2023	4:17:00 PM	8.33	4.8	350	510	3700	Fresh water displacement with biocide.
5/6/2023	4:27:00 PM	8.33	4.8	400	510	3650	Fresh water displacement with biocide.
5/6/2023	4:37:00 PM	8.33	4.8	450	510	3650	Fresh water displacement with biocide.
5/6/2023	4:48:00 PM	8.33	4.0	500	510	3500	Fresh water displacement with biocide.
5/6/2023	4:50:00 PM			510	510	4000	Landed plug @ calculated displacement. Received 58bbl of spacer to surface FCP 3500psi.
5/6/2023	4:55:00 PM						Checked floats, 5bbl back.
5/6/2023	5:10:00 PM						Turned over to Welltec toolhand for packer procedure.
5/6/2023	6:15:00 PM						Flushed stack, verified clean by rig crew.
5/6/2023	6:45:00 PM						Rig down.
5/6/2023	7:30:00 PM						Crew departed location.

Spinney 1N Production Pump Chart – Pressure / Rate / Density



Chart



Centralizer Depths

Well Name: Spinney 01N

Production, Set Depth: 23,000.0ftKB

API 05123516360000		Surface Legal Location SWSW 9 3N 66W		Field Name Wattenberg		State CO		Well Configuration Type Horizontal			
Ground Elevation (ft) 4,861.00	Original KB Elevation (ft) 4,889.50	KB-Ground Distance (ft) 28.50	Spud Date 4/28/2023 13:30	Rig Release Date 5/6/2023 19:00	On Production Date	Abandon Date					

Casing Run Tally

Run #	Ref #	Item Des	OD (in)	Wt (lb/ft)	Grade	Run?	Len (ft)	Centralized?	Ext Jwry	Connections	Top (ftKB)	Cum Len (ft)
7	1	Casing Joints	5 1/2	20.00	P-110	Yes	43.61	Yes			22,921.8	78.25
9	3	Casing Joints	5 1/2	20.00	P-110	Yes	43.78	Yes			22,832.4	167.65
11	5	Casing Joints	5 1/2	20.00	P-110	Yes	45.60	Yes			22,740.9	259.10
13	7	Casing Joints	5 1/2	20.00	P-110	Yes	45.67	Yes			22,649.4	350.60
15	9	Casing Joints	5 1/2	20.00	P-110	Yes	45.69	Yes			22,558.0	441.99
17		Marker Joint A	5 1/2	20.00	P-110	Yes	23.55	Yes			22,488.7	511.34
19	12	Casing Joints	5 1/2	20.00	P-110	Yes	44.26	Yes			22,398.8	601.19
21	14	Casing Joints	5 1/2	20.00	P-110	Yes	45.67	Yes			22,307.5	692.55
23	16	Casing Joints	5 1/2	20.00	P-110	Yes	44.78	Yes			22,216.9	783.13
25	18	Casing Joints	5 1/2	20.00	P-110	Yes	45.69	Yes			22,125.4	874.62
27	20	Casing Joints	5 1/2	20.00	P-110	Yes	43.35	Yes			22,036.2	963.77
29	22	Casing Joints	5 1/2	20.00	P-110	Yes	45.80	Yes			21,944.6	1,055.37
31	24	Casing Joints	5 1/2	20.00	P-110	Yes	45.63	Yes			21,862.2	1,137.79
33	26	Casing Joints	5 1/2	20.00	P-110	Yes	43.77	Yes			21,772.7	1,227.35
35	28	Casing Joints	5 1/2	20.00	P-110	Yes	44.74	Yes			21,682.3	1,317.69
37	30	Casing Joints	5 1/2	20.00	P-110	Yes	45.64	Yes			21,590.9	1,409.08
39	32	Casing Joints	5 1/2	20.00	P-110	Yes	45.75	Yes			21,499.4	1,500.63
41	34	Casing Joints	5 1/2	20.00	P-110	Yes	45.85	Yes			21,407.9	1,592.09
43	36	Casing Joints	5 1/2	20.00	P-110	Yes	42.92	Yes			21,321.3	1,678.68
45	38	Casing Joints	5 1/2	20.00	P-110	Yes	45.70	Yes			21,229.8	1,770.19
47	40	Casing Joints	5 1/2	20.00	P-110	Yes	44.75	Yes			21,142.0	1,857.99
49	42	Casing Joints	5 1/2	20.00	P-110	Yes	44.33	Yes			21,052.0	1,948.02
51	44	Casing Joints	5 1/2	20.00	P-110	Yes	45.85	Yes			20,960.5	2,039.47
53	46	Casing Joints	5 1/2	20.00	P-110	Yes	44.61	Yes			20,872.4	2,127.62
55	48	Casing Joints	5 1/2	20.00	P-110	Yes	45.70	Yes			20,783.6	2,216.36
57	50	Casing Joints	5 1/2	20.00	P-110	Yes	45.80	Yes			20,692.2	2,307.83
59	52	Casing Joints	5 1/2	20.00	P-110	Yes	42.49	Yes			20,603.9	2,396.07
61	54	Casing Joints	5 1/2	20.00	P-110	Yes	45.70	Yes			20,515.0	2,484.99
63	56	Casing Joints	5 1/2	20.00	P-110	Yes	45.83	Yes			20,423.4	2,576.63
65	58	Casing Joints	5 1/2	20.00	P-110	Yes	45.85	Yes			20,331.7	2,668.33
67	60	Casing Joints	5 1/2	20.00	P-110	Yes	45.67	Yes			20,240.1	2,759.92



Centralizer Depths

Well Name: Spinney 01N

Production, Set Depth: 23,000.0ftKB

API 05123516360000		Surface Legal Location SWSW 9 3N 66W		Field Name Wattenberg		State CO		Well Configuration Type Horizontal			
Ground Elevation (ft) 4,861.00	Original KB Elevation (ft) 4,889.50	KB-Ground Distance (ft) 28.50	Spud Date 4/28/2023 13:30	Rig Release Date 5/6/2023 19:00	On Production Date	Abandon Date					

Casing Run Tally												
Run #	Ref #	Item Des	OD (in)	Wt (lb/ft)	Grade	Run?	Len (ft)	Centralized?	Ext Jwry	Connections	Top (ftKB)	Cum Len (ft)
69	62	Casing Joints	5 1/2	20.00	P-110	Yes	45.71	Yes			20,148.5	2,851.51
71	64	Casing Joints	5 1/2	20.00	P-110	Yes	45.83	Yes			20,057.0	2,942.99
73	66	Casing Joints	5 1/2	20.00	P-110	Yes	45.84	Yes			19,969.8	3,030.23
75	68	Casing Joints	5 1/2	20.00	P-110	Yes	45.64	Yes			19,878.5	3,121.54
77	70	Casing Joints	5 1/2	20.00	P-110	Yes	45.80	Yes			19,786.8	3,213.19
79	72	Casing Joints	5 1/2	20.00	P-110	Yes	43.65	Yes			19,697.3	3,302.73
81	74	Casing Joints	5 1/2	20.00	P-110	Yes	45.58	Yes			19,606.1	3,393.87
83	76	Casing Joints	5 1/2	20.00	P-110	Yes	45.59	Yes			19,514.9	3,485.10
85	78	Casing Joints	5 1/2	20.00	P-110	Yes	45.60	Yes			19,423.6	3,576.37
87	80	Casing Joints	5 1/2	20.00	P-110	Yes	44.09	Yes			19,333.9	3,666.13
89	82	Casing Joints	5 1/2	20.00	P-110	Yes	45.85	Yes			19,242.3	3,757.66
91	84	Casing Joints	5 1/2	20.00	P-110	Yes	45.66	Yes			19,150.8	3,849.20
93	86	Casing Joints	5 1/2	20.00	P-110	Yes	45.82	Yes			19,059.3	3,940.69
95	88	Casing Joints	5 1/2	20.00	P-110	Yes	45.58	Yes			18,968.5	4,031.46
97	90	Casing Joints	5 1/2	20.00	P-110	Yes	45.70	Yes			18,876.9	4,123.06
99	92	Casing Joints	5 1/2	20.00	P-110	Yes	45.90	Yes			18,787.4	4,212.56
101	94	Casing Joints	5 1/2	20.00	P-110	Yes	45.83	Yes			18,707.3	4,292.67
103	96	Casing Joints	5 1/2	20.00	P-110	Yes	45.60	Yes			18,615.9	4,384.09
105	98	Casing Joints	5 1/2	20.00	P-110	Yes	45.60	Yes			18,524.7	4,475.29
107	100	Casing Joints	5 1/2	20.00	P-110	Yes	45.84	Yes			18,433.0	4,566.98
109	102	Casing Joints	5 1/2	20.00	P-110	Yes	45.81	Yes			18,341.4	4,658.62
111	104	Casing Joints	5 1/2	20.00	P-110	Yes	45.85	Yes			18,249.7	4,750.33
113	106	Casing Joints	5 1/2	20.00	P-110	Yes	45.85	Yes			18,158.0	4,842.03
115	108	Casing Joints	5 1/2	20.00	P-110	Yes	45.73	Yes			18,066.6	4,933.42
117	110	Casing Joints	5 1/2	20.00	P-110	Yes	45.82	Yes			17,975.7	5,024.34
119	112	Casing Joints	5 1/2	20.00	P-110	Yes	45.65	Yes			17,884.2	5,115.79
121	114	Casing Joints	5 1/2	20.00	P-110	Yes	45.80	Yes			17,792.7	5,207.26
123	116	Casing Joints	5 1/2	20.00	P-110	Yes	45.65	Yes			17,701.3	5,298.71
125	118	Casing Joints	5 1/2	20.00	P-110	Yes	45.69	Yes			17,609.8	5,390.23
127	120	Casing Joints	5 1/2	20.00	P-110	Yes	45.70	Yes			17,524.9	5,475.14
129	122	Casing Joints	5 1/2	20.00	P-110	Yes	45.84	Yes			17,433.3	5,566.67



Centralizer Depths

Well Name: Spinney 01N

Production, Set Depth: 23,000.0ftKB

API 05123516360000		Surface Legal Location SWSW 9 3N 66W		Field Name Wattenberg		State CO		Well Configuration Type Horizontal			
Ground Elevation (ft) 4,861.00	Original KB Elevation (ft) 4,889.50	KB-Ground Distance (ft) 28.50	Spud Date 4/28/2023 13:30	Rig Release Date 5/6/2023 19:00	On Production Date	Abandon Date					

Casing Run Tally												
Run #	Ref #	Item Des	OD (in)	Wt (lb/ft)	Grade	Run?	Len (ft)	Centralized?	Ext Jwry	Connections	Top (ftKB)	Cum Len (ft)
131	124	Casing Joints	5 1/2	20.00	P-110	Yes	45.66	Yes			17,341.9	5,658.13
133	126	Casing Joints	5 1/2	20.00	P-110	Yes	45.62	Yes			17,252.3	5,747.74
135	128	Casing Joints	5 1/2	20.00	P-110	Yes	45.62	Yes			17,161.0	5,839.04
137	130	Casing Joints	5 1/2	20.00	P-110	Yes	44.80	Yes			17,070.4	5,929.64
139	132	Casing Joints	5 1/2	20.00	P-110	Yes	45.82	Yes			16,978.9	6,021.11
141	134	Casing Joints	5 1/2	20.00	P-110	Yes	43.94	Yes			16,891.1	6,108.95
143	136	Casing Joints	5 1/2	20.00	P-110	Yes	45.83	Yes			16,801.7	6,198.28
145	138	Casing Joints	5 1/2	20.00	P-110	Yes	45.69	Yes			16,710.2	6,289.77
147	140	Casing Joints	5 1/2	20.00	P-110	Yes	42.69	Yes			16,622.7	6,377.30
149	142	Casing Joints	5 1/2	20.00	P-110	Yes	45.60	Yes			16,532.8	6,467.23
151	144	Casing Joints	5 1/2	20.00	P-110	Yes	45.80	Yes			16,441.4	6,558.63
153	146	Casing Joints	5 1/2	20.00	P-110	Yes	44.83	Yes			16,350.9	6,649.14
155	148	Casing Joints	5 1/2	20.00	P-110	Yes	43.84	Yes			16,262.8	6,737.17
157	150	Casing Joints	5 1/2	20.00	P-110	Yes	45.86	Yes			16,171.3	6,828.72
159	152	Casing Joints	5 1/2	20.00	P-110	Yes	45.66	Yes			16,080.4	6,919.58
161	154	Casing Joints	5 1/2	20.00	P-110	Yes	43.68	Yes			15,990.9	7,009.07
163	156	Casing Joints	5 1/2	20.00	P-110	Yes	45.67	Yes			15,899.4	7,100.57
165	158	Casing Joints	5 1/2	20.00	P-110	Yes	45.70	Yes			15,807.9	7,192.14
167	160	Casing Joints	5 1/2	20.00	P-110	Yes	45.59	Yes			15,716.6	7,283.39
169	162	Casing Joints	5 1/2	20.00	P-110	Yes	45.85	Yes			15,624.9	7,375.10
171	164	Casing Joints	5 1/2	20.00	P-110	Yes	45.85	Yes			15,535.7	7,464.31
173		Marker Joint B	5 1/2	20.00	P-110	Yes	23.56	Yes			15,466.6	7,533.43
175	167	Casing Joints	5 1/2	20.00	P-110	Yes	45.62	Yes			15,375.3	7,624.66
177	169	Casing Joints	5 1/2	20.00	P-110	Yes	45.60	Yes			15,283.9	7,716.11
179	171	Casing Joints	5 1/2	20.00	P-110	Yes	41.92	Yes			15,196.4	7,803.65
181	173	Casing Joints	5 1/2	20.00	P-110	Yes	45.64	Yes			15,105.1	7,894.91
183	175	Casing Joints	5 1/2	20.00	P-110	Yes	45.85	Yes			15,013.6	7,986.38
185	177	Casing Joints	5 1/2	20.00	P-110	Yes	45.65	Yes			14,922.3	8,077.73
187	179	Casing Joints	5 1/2	20.00	P-110	Yes	45.70	Yes			14,830.9	8,169.09
189	181	Casing Joints	5 1/2	20.00	P-110	Yes	45.84	Yes			14,739.3	8,260.74
191	183	Casing Joints	5 1/2	20.00	P-110	Yes	43.30	Yes			14,650.7	8,349.34



Centralizer Depths

Well Name: Spinney 01N

Production, Set Depth: 23,000.0ftKB

API 05123516360000		Surface Legal Location SWSW 9 3N 66W		Field Name Wattenberg		State CO		Well Configuration Type Horizontal			
Ground Elevation (ft) 4,861.00		Original KB Elevation (ft) 4,889.50		KB-Ground Distance (ft) 28.50		Spud Date 4/28/2023 13:30		Rig Release Date 5/6/2023 19:00		On Production Date Abandon Date	

Casing Run Tally

Run #	Ref #	Item Des	OD (in)	Wt (lb/ft)	Grade	Run?	Len (ft)	Centralized?	Ext Jwry	Connections	Top (ftKB)	Cum Len (ft)
193	185	Casing Joints	5 1/2	20.00	P-110	Yes	45.85	Yes			14,559.0	8,441.02
195	187	Casing Joints	5 1/2	20.00	P-110	Yes	45.80	Yes			14,467.5	8,532.52
197	189	Casing Joints	5 1/2	20.00	P-110	Yes	43.77	Yes			14,377.9	8,622.09
199	191	Casing Joints	5 1/2	20.00	P-110	Yes	45.65	Yes			14,286.6	8,713.41
201	193	Casing Joints	5 1/2	20.00	P-110	Yes	45.36	Yes			14,198.1	8,801.87
203	195	Casing Joints	5 1/2	20.00	P-110	Yes	45.70	Yes			14,106.6	8,893.37
205	197	Casing Joints	5 1/2	20.00	P-110	Yes	45.18	Yes			14,015.6	8,984.41
207	199	Casing Joints	5 1/2	20.00	P-110	Yes	44.30	Yes			13,925.6	9,074.41
209	201	Casing Joints	5 1/2	20.00	P-110	Yes	45.84	Yes			13,834.2	9,165.79
211	203	Casing Joints	5 1/2	20.00	P-110	Yes	45.85	Yes			13,742.5	9,257.46
213	205	Casing Joints	5 1/2	20.00	P-110	Yes	45.86	Yes			13,651.1	9,348.94
215	207	Casing Joints	5 1/2	20.00	P-110	Yes	45.68	Yes			13,559.8	9,440.22
217	209	Casing Joints	5 1/2	20.00	P-110	Yes	45.66	Yes			13,470.2	9,529.83
219	211	Casing Joints	5 1/2	20.00	P-110	Yes	41.00	Yes			13,385.3	9,614.75
221	213	Casing Joints	5 1/2	20.00	P-110	Yes	45.70	Yes			13,293.7	9,706.28
223	215	Casing Joints	5 1/2	20.00	P-110	Yes	45.82	Yes			13,202.2	9,797.79
225	217	Casing Joints	5 1/2	20.00	P-110	Yes	45.84	Yes			13,110.5	9,889.47
227	219	Casing Joints	5 1/2	20.00	P-110	Yes	45.82	Yes			13,018.9	9,981.11
229	221	Casing Joints	5 1/2	20.00	P-110	Yes	45.76	Yes			12,927.3	10,072.71
231	223	Casing Joints	5 1/2	20.00	P-110	Yes	45.83	Yes			12,835.8	10,164.22
233	225	Casing Joints	5 1/2	20.00	P-110	Yes	45.81	Yes			12,744.1	10,255.88
235	227	Casing Joints	5 1/2	20.00	P-110	Yes	43.66	Yes			12,654.6	10,345.42
237	229	Casing Joints	5 1/2	20.00	P-110	Yes	45.85	Yes			12,562.9	10,437.11
239	231	Casing Joints	5 1/2	20.00	P-110	Yes	45.85	Yes			12,471.3	10,528.71
241	233	Casing Joints	5 1/2	20.00	P-110	Yes	43.70	Yes			12,381.8	10,618.19
243	235	Casing Joints	5 1/2	20.00	P-110	Yes	43.50	Yes			12,292.5	10,707.49
245	237	Casing Joints	5 1/2	20.00	P-110	Yes	45.70	Yes			12,201.1	10,798.89
247	239	Casing Joints	5 1/2	20.00	P-110	Yes	45.85	Yes			12,109.6	10,890.44
249	241	Casing Joints	5 1/2	20.00	P-110	Yes	45.67	Yes			12,018.1	10,981.89
251	243	Casing Joints	5 1/2	20.00	P-110	Yes	45.68	Yes			11,926.8	11,073.23
253	245	Casing Joints	5 1/2	20.00	P-110	Yes	45.85	Yes			11,835.2	11,164.76



Centralizer Depths

Well Name: Spinney 01N

Production, Set Depth: 23,000.0ftKB

API 05123516360000		Surface Legal Location SWSW 9 3N 66W		Field Name Wattenberg		State CO		Well Configuration Type Horizontal			
Ground Elevation (ft) 4,861.00		Original KB Elevation (ft) 4,889.50		KB-Ground Distance (ft) 28.50		Spud Date 4/28/2023 13:30		Rig Release Date 5/6/2023 19:00		On Production Date Abandon Date	

Casing Run Tally

Run #	Ref #	Item Des	OD (in)	Wt (lb/ft)	Grade	Run?	Len (ft)	Centralized?	Ext Jwry	Connections	Top (ftKB)	Cum Len (ft)
255	247	Casing Joints	5 1/2	20.00	P-110	Yes	45.85	Yes			11,746.1	11,253.93
257	249	Casing Joints	5 1/2	20.00	P-110	Yes	44.90	Yes			11,657.5	11,342.55
259	251	Casing Joints	5 1/2	20.00	P-110	Yes	45.85	Yes			11,565.9	11,434.14
261	253	Casing Joints	5 1/2	20.00	P-110	Yes	45.69	Yes			11,476.3	11,523.66
263	255	Casing Joints	5 1/2	20.00	P-110	Yes	45.83	Yes			11,384.8	11,615.16
265	257	Casing Joints	5 1/2	20.00	P-110	Yes	45.84	Yes			11,293.3	11,706.75
267	259	Casing Joints	5 1/2	20.00	P-110	Yes	45.75	Yes			11,203.0	11,796.99
269	261	Casing Joints	5 1/2	20.00	P-110	Yes	43.72	Yes			11,117.7	11,882.28
271	263	Casing Joints	5 1/2	20.00	P-110	Yes	45.68	Yes			11,026.4	11,973.64
273	265	Casing Joints	5 1/2	20.00	P-110	Yes	45.70	Yes			10,935.0	12,065.04
275	267	Casing Joints	5 1/2	20.00	P-110	Yes	45.69	Yes			10,843.6	12,156.42
277	269	Casing Joints	5 1/2	20.00	P-110	Yes	45.20	Yes			10,752.7	12,247.31
279	271	Casing Joints	5 1/2	20.00	P-110	Yes	45.65	Yes			10,661.2	12,338.82
281	273	Casing Joints	5 1/2	20.00	P-110	Yes	45.88	Yes			10,571.9	12,428.12
283	275	Casing Joints	5 1/2	20.00	P-110	Yes	45.70	Yes			10,483.6	12,516.37
285	277	Casing Joints	5 1/2	20.00	P-110	Yes	45.70	Yes			10,392.2	12,607.79
287	279	Casing Joints	5 1/2	20.00	P-110	Yes	45.70	Yes			10,300.9	12,699.09
289	281	Casing Joints	5 1/2	20.00	P-110	Yes	45.66	Yes			10,209.4	12,790.61
291	283	Casing Joints	5 1/2	20.00	P-110	Yes	45.87	Yes			10,120.2	12,879.76
293	285	Casing Joints	5 1/2	20.00	P-110	Yes	45.68	Yes			10,031.5	12,968.47
295	287	Casing Joints	5 1/2	20.00	P-110	Yes	45.88	Yes			9,939.8	13,060.19
297	289	Casing Joints	5 1/2	20.00	P-110	Yes	45.82	Yes			9,848.2	13,151.84
299	291	Casing Joints	5 1/2	20.00	P-110	Yes	45.70	Yes			9,756.8	13,243.24
301	293	Casing Joints	5 1/2	20.00	P-110	Yes	45.84	Yes			9,668.5	13,331.50
303	295	Casing Joints	5 1/2	20.00	P-110	Yes	45.86	Yes			9,582.8	13,417.19
305	297	Casing Joints	5 1/2	20.00	P-110	Yes	44.63	Yes			9,492.3	13,507.67
307	299	Casing Joints	5 1/2	20.00	P-110	Yes	45.66	Yes			9,402.7	13,597.33
309	301	Casing Joints	5 1/2	20.00	P-110	Yes	45.66	Yes			9,311.4	13,688.65
311	303	Casing Joints	5 1/2	20.00	P-110	Yes	45.68	Yes			9,220.0	13,780.03
313	305	Casing Joints	5 1/2	20.00	P-110	Yes	45.40	Yes			9,128.7	13,871.29
315	307	Casing Joints	5 1/2	20.00	P-110	Yes	45.85	Yes			9,037.0	13,962.99



Centralizer Depths

Well Name: Spinney 01N

Production, Set Depth: 23,000.0ftKB

API 05123516360000		Surface Legal Location SWSW 9 3N 66W		Field Name Wattenberg		State CO		Well Configuration Type Horizontal			
Ground Elevation (ft) 4,861.00	Original KB Elevation (ft) 4,889.50	KB-Ground Distance (ft) 28.50	Spud Date 4/28/2023 13:30	Rig Release Date 5/6/2023 19:00	On Production Date	Abandon Date					

Casing Run Tally

Run #	Ref #	Item Des	OD (in)	Wt (lb/ft)	Grade	Run?	Len (ft)	Centralized?	Ext Jwry	Connections	Top (ftKB)	Cum Len (ft)
317	309	Casing Joints	5 1/2	20.00	P-110	Yes	43.98	Yes			8,947.2	14,052.83
319	311	Casing Joints	5 1/2	20.00	P-110	Yes	45.70	Yes			8,855.8	14,144.21
321	313	Casing Joints	5 1/2	20.00	P-110	Yes	45.85	Yes			8,764.1	14,235.92
323	315	Casing Joints	5 1/2	20.00	P-110	Yes	45.70	Yes			8,672.5	14,327.51
325	317	Casing Joints	5 1/2	20.00	P-110	Yes	45.35	Yes			8,581.3	14,418.72
327	319	Casing Joints	5 1/2	20.00	P-110	Yes	43.30	Yes			8,492.4	14,507.60
329	321	Casing Joints	5 1/2	20.00	P-110	Yes	45.85	Yes			8,400.7	14,599.29
331	323	Casing Joints	5 1/2	20.00	P-110	Yes	45.67	Yes			8,309.4	14,690.63
333	325	Casing Joints	5 1/2	20.00	P-110	Yes	45.11	Yes			8,222.9	14,777.10
335	327	Casing Joints	5 1/2	20.00	P-110	Yes	45.67	Yes			8,131.4	14,868.60
337	329	Casing Joints	5 1/2	20.00	P-110	Yes	45.86	Yes			8,039.7	14,960.32
339		Marker Joint F	5 1/2	20.00	P-110	Yes	10.07	Yes			7,983.8	15,016.22
340	331	Casing Joints	5 1/2	20.00	P-110	Yes	45.88	Yes			7,937.9	15,062.10
341	332	Casing Joints	5 1/2	20.00	P-110	Yes	45.59	Yes			7,892.3	15,107.69
342	333	Casing Joints	5 1/2	20.00	P-110	Yes	45.60	Yes			7,846.7	15,153.29
343	334	Casing Joints	5 1/2	20.00	P-110	Yes	34.16	Yes			7,812.6	15,187.45
344	335	Casing Joints	5 1/2	20.00	P-110	Yes	35.53	Yes			7,777.0	15,222.98
345	336	Casing Joints	5 1/2	20.00	P-110	Yes	45.86	Yes			7,731.2	15,268.84
346	337	Casing Joints	5 1/2	20.00	P-110	Yes	45.82	Yes			7,685.3	15,314.66
347	338	Casing Joints	5 1/2	20.00	P-110	Yes	45.66	Yes			7,639.7	15,360.32
348	339	Casing Joints	5 1/2	20.00	P-110	Yes	45.83	Yes			7,593.9	15,406.15
349	340	Casing Joints	5 1/2	20.00	P-110	Yes	45.83	Yes			7,548.0	15,451.98
350	341	Casing Joints	5 1/2	20.00	P-110	Yes	45.85	Yes			7,502.2	15,497.83
351	342	Casing Joints	5 1/2	20.00	P-110	Yes	45.60	Yes			7,456.6	15,543.43
352	343	Casing Joints	5 1/2	20.00	P-110	Yes	45.88	Yes			7,410.7	15,589.31
353	344	Casing Joints	5 1/2	20.00	P-110	Yes	45.86	Yes			7,364.8	15,635.17
354	345	Casing Joints	5 1/2	20.00	P-110	Yes	45.60	Yes			7,319.2	15,680.77
355	346	Casing Joints	5 1/2	20.00	P-110	Yes	45.85	Yes			7,273.4	15,726.62
356	347	Casing Joints	5 1/2	20.00	P-110	Yes	45.86	Yes			7,227.5	15,772.48
357	348	Casing Joints	5 1/2	20.00	P-110	Yes	45.70	Yes			7,181.8	15,818.18
359	349	Casing Joints	5 1/2	20.00	P-110	Yes	45.65	Yes			7,134.5	15,865.54



Centralizer Depths

Well Name: Spinney 01N

Production, Set Depth: 23,000.0ftKB

API 05123516360000		Surface Legal Location SWSW 9 3N 66W		Field Name Wattenberg		State CO		Well Configuration Type Horizontal			
Ground Elevation (ft) 4,861.00	Original KB Elevation (ft) 4,889.50	KB-Ground Distance (ft) 28.50	Spud Date 4/28/2023 13:30	Rig Release Date 5/6/2023 19:00	On Production Date	Abandon Date					

Casing Run Tally

Run #	Ref #	Item Des	OD (in)	Wt (lb/ft)	Grade	Run?	Len (ft)	Centralized?	Ext Jwly	Connections	Top (ftKB)	Cum Len (ft)
360	350	Casing Joints	5 1/2	20.00	P-110	Yes	45.86	Yes			7,088.6	15,911.40
361	351	Casing Joints	5 1/2	20.00	P-110	Yes	45.87	Yes			7,042.7	15,957.27
362	352	Casing Joints	5 1/2	20.00	P-110	Yes	45.83	Yes			6,996.9	16,003.10
363	353	Casing Joints	5 1/2	20.00	P-110	Yes	45.86	Yes			6,951.0	16,048.96
364	354	Casing Joints	5 1/2	20.00	P-110	Yes	45.81	Yes			6,905.2	16,094.77
365	355	Casing Joints	5 1/2	20.00	P-110	Yes	45.86	Yes			6,859.4	16,140.63
366	356	Casing Joints	5 1/2	20.00	P-110	Yes	45.68	Yes			6,813.7	16,186.31
367	357	Casing Joints	5 1/2	20.00	P-110	Yes	45.34	Yes			6,768.4	16,231.65
368	358	Casing Joints	5 1/2	20.00	P-110	Yes	45.85	Yes			6,722.5	16,277.50
369	359	Casing Joints	5 1/2	20.00	P-110	Yes	45.57	Yes			6,676.9	16,323.07
370		Marker Joint G	5 1/2	20.00	P-110	Yes	10.07	Yes			6,666.9	16,333.14
371	360	Casing Joints	5 1/2	20.00	P-110	Yes	45.63	Yes			6,621.2	16,378.77
372	361	Casing Joints	5 1/2	20.00	P-110	Yes	45.60	Yes			6,575.6	16,424.37
373	362	Casing Joints	5 1/2	20.00	P-110	Yes	45.60	Yes			6,530.0	16,469.97
374	363	Casing Joints	5 1/2	20.00	P-110	Yes	45.63	Yes			6,484.4	16,515.60
375	364	Casing Joints	5 1/2	20.00	P-110	Yes	45.86	Yes			6,438.5	16,561.46
376	365	Casing Joints	5 1/2	20.00	P-110	Yes	45.61	Yes			6,392.9	16,607.07
377	366	Casing Joints	5 1/2	20.00	P-110	Yes	45.83	Yes			6,347.1	16,652.90
378	367	Casing Joints	5 1/2	20.00	P-110	Yes	45.65	Yes			6,301.5	16,698.55
379	368	Casing Joints	5 1/2	20.00	P-110	Yes	45.86	Yes			6,255.6	16,744.41
380	369	Casing Joints	5 1/2	20.00	P-110	Yes	45.86	Yes			6,209.7	16,790.27
381	370	Casing Joints	5 1/2	20.00	P-110	Yes	45.60	Yes			6,164.1	16,835.87
382	371	Casing Joints	5 1/2	20.00	P-110	Yes	45.84	Yes			6,118.3	16,881.71
383	372	Casing Joints	5 1/2	20.00	P-110	Yes	45.07	Yes			6,073.2	16,926.78
384	373	Casing Joints	5 1/2	20.00	P-110	Yes	45.63	Yes			6,027.6	16,972.41
385	374	Casing Joints	5 1/2	20.00	P-110	Yes	45.82	Yes			5,981.8	17,018.23
386	375	Casing Joints	5 1/2	20.00	P-110	Yes	41.67	Yes			5,940.1	17,059.90
387	376	Casing Joints	5 1/2	20.00	P-110	Yes	45.70	Yes			5,894.4	17,105.60
388	377	Casing Joints	5 1/2	20.00	P-110	Yes	45.70	Yes			5,848.7	17,151.30
389	378	Casing Joints	5 1/2	20.00	P-110	Yes	45.63	Yes			5,803.1	17,196.93
390	379	Casing Joints	5 1/2	20.00	P-110	Yes	43.57	Yes			5,759.5	17,240.50



Centralizer Depths

Well Name: Spinney 01N

Production, Set Depth: 23,000.0ftKB

API 05123516360000		Surface Legal Location SWSW 9 3N 66W		Field Name Wattenberg		State CO		Well Configuration Type Horizontal			
Ground Elevation (ft) 4,861.00	Original KB Elevation (ft) 4,889.50	KB-Ground Distance (ft) 28.50	Spud Date 4/28/2023 13:30	Rig Release Date 5/6/2023 19:00	On Production Date	Abandon Date					

Casing Run Tally

Run #	Ref #	Item Des	OD (in)	Wt (lb/ft)	Grade	Run?	Len (ft)	Centralized?	Ext Jwry	Connections	Top (ftKB)	Cum Len (ft)
391	380	Casing Joints	5 1/2	20.00	P-110	Yes	45.70	Yes			5,713.8	17,286.20
392	381	Casing Joints	5 1/2	20.00	P-110	Yes	45.60	Yes			5,668.2	17,331.80
393	382	Casing Joints	5 1/2	20.00	P-110	Yes	43.90	Yes			5,624.3	17,375.70
394	383	Casing Joints	5 1/2	20.00	P-110	Yes	45.80	Yes			5,578.5	17,421.50
395	384	Casing Joints	5 1/2	20.00	P-110	Yes	45.76	Yes			5,532.7	17,467.26
396	385	Casing Joints	5 1/2	20.00	P-110	Yes	45.85	Yes			5,486.9	17,513.11
397	386	Casing Joints	5 1/2	20.00	P-110	Yes	43.70	Yes			5,443.2	17,556.81
398	387	Casing Joints	5 1/2	20.00	P-110	Yes	45.60	Yes			5,397.6	17,602.41
399	388	Casing Joints	5 1/2	20.00	P-110	Yes	45.60	Yes			5,352.0	17,648.01
400	389	Casing Joints	5 1/2	20.00	P-110	Yes	45.05	Yes			5,306.9	17,693.06
401	390	Casing Joints	5 1/2	20.00	P-110	Yes	45.86	Yes			5,261.1	17,738.92
402	391	Casing Joints	5 1/2	20.00	P-110	Yes	45.86	Yes			5,215.2	17,784.78
403	392	Casing Joints	5 1/2	20.00	P-110	Yes	45.57	Yes			5,169.7	17,830.35
404	393	Casing Joints	5 1/2	20.00	P-110	Yes	41.31	Yes			5,128.3	17,871.66
405	394	Casing Joints	5 1/2	20.00	P-110	Yes	45.58	Yes			5,082.8	17,917.24
406	395	Casing Joints	5 1/2	20.00	P-110	Yes	45.65	Yes			5,037.1	17,962.89
407	396	Casing Joints	5 1/2	20.00	P-110	Yes	45.63	Yes			4,991.5	18,008.52
408	397	Casing Joints	5 1/2	20.00	P-110	Yes	45.85	Yes			4,945.6	18,054.37
409	398	Casing Joints	5 1/2	20.00	P-110	Yes	45.85	Yes			4,899.8	18,100.22
410	399	Casing Joints	5 1/2	20.00	P-110	Yes	45.83	Yes			4,854.0	18,146.05
411	400	Casing Joints	5 1/2	20.00	P-110	Yes	45.85	Yes			4,808.1	18,191.90
412	401	Casing Joints	5 1/2	20.00	P-110	Yes	42.60	Yes			4,765.5	18,234.50
413	402	Casing Joints	5 1/2	20.00	P-110	Yes	45.67	Yes			4,719.8	18,280.17
414	403	Casing Joints	5 1/2	20.00	P-110	Yes	44.03	Yes			4,675.8	18,324.20
415	404	Casing Joints	5 1/2	20.00	P-110	Yes	45.81	Yes			4,630.0	18,370.01
416	405	Casing Joints	5 1/2	20.00	P-110	Yes	45.87	Yes			4,584.1	18,415.88
417	406	Casing Joints	5 1/2	20.00	P-110	Yes	45.60	Yes			4,538.5	18,461.48
418	407	Casing Joints	5 1/2	20.00	P-110	Yes	45.37	Yes			4,493.2	18,506.85
419	408	Casing Joints	5 1/2	20.00	P-110	Yes	45.11	Yes			4,448.0	18,551.96
420	409	Casing Joints	5 1/2	20.00	P-110	Yes	45.84	Yes			4,402.2	18,597.80
421	410	Casing Joints	5 1/2	20.00	P-110	Yes	43.38	Yes			4,358.8	18,641.18



Centralizer Depths

Well Name: Spinney 01N

Production, Set Depth: 23,000.0ftKB

API 05123516360000		Surface Legal Location SWSW 9 3N 66W		Field Name Wattenberg		State CO		Well Configuration Type Horizontal			
Ground Elevation (ft) 4,861.00	Original KB Elevation (ft) 4,889.50	KB-Ground Distance (ft) 28.50	Spud Date 4/28/2023 13:30	Rig Release Date 5/6/2023 19:00	On Production Date	Abandon Date					

Casing Run Tally

Run #	Ref #	Item Des	OD (in)	Wt (lb/ft)	Grade	Run?	Len (ft)	Centralized?	Ext Jwry	Connections	Top (ftKB)	Cum Len (ft)
422	411	Casing Joints	5 1/2	20.00	P-110	Yes	43.75	Yes			4,315.1	18,684.93
423	412	Casing Joints	5 1/2	20.00	P-110	Yes	45.84	Yes			4,269.2	18,730.77
424	413	Casing Joints	5 1/2	20.00	P-110	Yes	45.68	Yes			4,223.6	18,776.45
425	414	Casing Joints	5 1/2	20.00	P-110	Yes	45.72	Yes			4,177.8	18,822.17
426	415	Casing Joints	5 1/2	20.00	P-110	Yes	43.63	Yes			4,134.2	18,865.80
427	416	Casing Joints	5 1/2	20.00	P-110	Yes	45.70	Yes			4,088.5	18,911.50
428	417	Casing Joints	5 1/2	20.00	P-110	Yes	45.70	Yes			4,042.8	18,957.20
429	418	Casing Joints	5 1/2	20.00	P-110	Yes	45.80	Yes			3,997.0	19,003.00
430	419	Casing Joints	5 1/2	20.00	P-110	Yes	45.64	Yes			3,951.4	19,048.64
431	420	Casing Joints	5 1/2	20.00	P-110	Yes	41.26	Yes			3,910.1	19,089.90
432	421	Casing Joints	5 1/2	20.00	P-110	Yes	39.90	Yes			3,870.2	19,129.80
433	422	Casing Joints	5 1/2	20.00	P-110	Yes	45.84	Yes			3,824.4	19,175.64
434	423	Casing Joints	5 1/2	20.00	P-110	Yes	45.80	Yes			3,778.6	19,221.44
435	424	Casing Joints	5 1/2	20.00	P-110	Yes	45.68	Yes			3,732.9	19,267.12
436	425	Casing Joints	5 1/2	20.00	P-110	Yes	45.80	Yes			3,687.1	19,312.92
437	426	Casing Joints	5 1/2	20.00	P-110	Yes	45.68	Yes			3,641.4	19,358.60
438	427	Casing Joints	5 1/2	20.00	P-110	Yes	45.65	Yes			3,595.8	19,404.25
439	428	Casing Joints	5 1/2	20.00	P-110	Yes	44.38	Yes			3,551.4	19,448.63
440	429	Casing Joints	5 1/2	20.00	P-110	Yes	45.85	Yes			3,505.5	19,494.48
442	430	Casing Joints	5 1/2	20.00	P-110	Yes	45.67	Yes			3,445.0	19,555.04
443	431	Casing Joints	5 1/2	20.00	P-110	Yes	45.86	Yes			3,399.1	19,600.90
444	432	Casing Joints	5 1/2	20.00	P-110	Yes	44.20	Yes			3,354.9	19,645.10
445	433	Casing Joints	5 1/2	20.00	P-110	Yes	45.84	Yes			3,309.1	19,690.94
446	434	Casing Joints	5 1/2	20.00	P-110	Yes	45.68	Yes			3,263.4	19,736.62
447	435	Casing Joints	5 1/2	20.00	P-110	Yes	45.70	Yes			3,217.7	19,782.32
448	436	Casing Joints	5 1/2	20.00	P-110	Yes	43.07	Yes			3,174.6	19,825.39
449	437	Casing Joints	5 1/2	20.00	P-110	Yes	45.61	Yes			3,129.0	19,871.00
450	438	Casing Joints	5 1/2	20.00	P-110	Yes	45.61	Yes			3,083.4	19,916.61
451	439	Casing Joints	5 1/2	20.00	P-110	Yes	45.10	Yes			3,038.3	19,961.71
452	440	Casing Joints	5 1/2	20.00	P-110	Yes	45.88	Yes			2,992.4	20,007.59
453	441	Casing Joints	5 1/2	20.00	P-110	Yes	45.85	Yes			2,946.6	20,053.44



Centralizer Depths

Well Name: Spinney 01N

Production, Set Depth: 23,000.0ftKB

API 05123516360000		Surface Legal Location SWSW 9 3N 66W		Field Name Wattenberg		State CO		Well Configuration Type Horizontal			
Ground Elevation (ft) 4,861.00	Original KB Elevation (ft) 4,889.50	KB-Ground Distance (ft) 28.50	Spud Date 4/28/2023 13:30	Rig Release Date 5/6/2023 19:00	On Production Date	Abandon Date					

Casing Run Tally

Run #	Ref #	Item Des	OD (in)	Wt (lb/ft)	Grade	Run?	Len (ft)	Centralized?	Ext Jwry	Connections	Top (ftKB)	Cum Len (ft)
454	442	Casing Joints	5 1/2	20.00	P-110	Yes	43.03	Yes			2,903.5	20,096.47
455	443	Casing Joints	5 1/2	20.00	P-110	Yes	45.90	Yes			2,857.6	20,142.37
456	444	Casing Joints	5 1/2	20.00	P-110	Yes	45.87	Yes			2,811.8	20,188.24
457	445	Casing Joints	5 1/2	20.00	P-110	Yes	43.90	Yes			2,767.9	20,232.14
458	446	Casing Joints	5 1/2	20.00	P-110	Yes	45.52	Yes			2,722.3	20,277.66
459	447	Casing Joints	5 1/2	20.00	P-110	Yes	45.85	Yes			2,676.5	20,323.51
460	448	Casing Joints	5 1/2	20.00	P-110	Yes	45.85	Yes			2,630.6	20,369.36
461	449	Casing Joints	5 1/2	20.00	P-110	Yes	44.02	Yes			2,586.6	20,413.38
462	450	Casing Joints	5 1/2	20.00	P-110	Yes	45.64	Yes			2,541.0	20,459.02
463	451	Casing Joints	5 1/2	20.00	P-110	Yes	45.84	Yes			2,495.1	20,504.86
464	452	Casing Joints	5 1/2	20.00	P-110	Yes	45.66	Yes			2,449.5	20,550.52
465	453	Casing Joints	5 1/2	20.00	P-110	Yes	45.05	Yes			2,404.4	20,595.57
466	454	Casing Joints	5 1/2	20.00	P-110	Yes	45.60	Yes			2,358.8	20,641.17
467	455	Casing Joints	5 1/2	20.00	P-110	Yes	43.79	Yes			2,315.0	20,684.96
468	456	Casing Joints	5 1/2	20.00	P-110	Yes	45.62	Yes			2,269.4	20,730.58
469	457	Casing Joints	5 1/2	20.00	P-110	Yes	45.60	Yes			2,223.8	20,776.18
470	458	Casing Joints	5 1/2	20.00	P-110	Yes	43.67	Yes			2,180.2	20,819.85
471	459	Casing Joints	5 1/2	20.00	P-110	Yes	45.86	Yes			2,134.3	20,865.71
472	460	Casing Joints	5 1/2	20.00	P-110	Yes	45.58	Yes			2,088.7	20,911.29
473	461	Casing Joints	5 1/2	20.00	P-110	Yes	45.65	Yes			2,043.1	20,956.94
474	462	Casing Joints	5 1/2	20.00	P-110	Yes	45.85	Yes			1,997.2	21,002.79
475	463	Casing Joints	5 1/2	20.00	P-110	Yes	45.85	Yes			1,951.4	21,048.64
476	464	Casing Joints	5 1/2	20.00	P-110	Yes	45.85	Yes			1,905.5	21,094.49
477	465	Casing Joints	5 1/2	20.00	P-110	Yes	43.60	Yes			1,861.9	21,138.09
478	466	Casing Joints	5 1/2	20.00	P-110	Yes	45.70	Yes			1,816.2	21,183.79
479	467	Casing Joints	5 1/2	20.00	P-110	Yes	45.68	Yes			1,770.5	21,229.47
480	468	Casing Joints	5 1/2	20.00	P-110	Yes	45.81	Yes			1,724.7	21,275.28
481	469	Casing Joints	5 1/2	20.00	P-110	Yes	43.53	Yes			1,681.2	21,318.81
482	470	Casing Joints	5 1/2	20.00	P-110	Yes	45.70	Yes			1,635.5	21,364.51
483	471	Casing Joints	5 1/2	20.00	P-110	Yes	45.62	Yes			1,589.9	21,410.13
484	472	Casing Joints	5 1/2	20.00	P-110	Yes	45.66	Yes			1,544.2	21,455.79



Centralizer Depths

Well Name: Spinney 01N

Production, Set Depth: 23,000.0ftKB

API 05123516360000		Surface Legal Location SWSW 9 3N 66W		Field Name Wattenberg		State CO		Well Configuration Type Horizontal			
Ground Elevation (ft) 4,861.00		Original KB Elevation (ft) 4,889.50		KB-Ground Distance (ft) 28.50		Spud Date 4/28/2023 13:30		Rig Release Date 5/6/2023 19:00		On Production Date Abandon Date	

Casing Run Tally

Run #	Ref #	Item Des	OD (in)	Wt (lb/ft)	Grade	Run?	Len (ft)	Centralized?	Ext Jwry	Connections	Top (ftKB)	Cum Len (ft)
485	473	Casing Joints	5 1/2	20.00	P-110	Yes	45.85	Yes			1,498.4	21,501.64
486	474	Casing Joints	5 1/2	20.00	P-110	Yes	43.62	Yes			1,454.7	21,545.26
487	475	Casing Joints	5 1/2	20.00	P-110	Yes	45.63	Yes			1,409.1	21,590.89
488	476	Casing Joints	5 1/2	20.00	P-110	Yes	45.81	Yes			1,363.3	21,636.70
489	477	Casing Joints	5 1/2	20.00	P-110	Yes	45.85	Yes			1,317.5	21,682.55
490	478	Casing Joints	5 1/2	20.00	P-110	Yes	45.65	Yes			1,271.8	21,728.20
491	479	Casing Joints	5 1/2	20.00	P-110	Yes	43.50	Yes			1,228.3	21,771.70
492	480	Casing Joints	5 1/2	20.00	P-110	Yes	45.66	Yes			1,182.6	21,817.36
493	481	Casing Joints	5 1/2	20.00	P-110	Yes	45.86	Yes			1,136.8	21,863.22
494	482	Casing Joints	5 1/2	20.00	P-110	Yes	45.84	Yes			1,090.9	21,909.06
495	483	Casing Joints	5 1/2	20.00	P-110	Yes	45.64	Yes			1,045.3	21,954.70
496	484	Casing Joints	5 1/2	20.00	P-110	Yes	45.70	Yes			999.6	22,000.40
497	485	Casing Joints	5 1/2	20.00	P-110	Yes	45.60	Yes			954.0	22,046.00
498	486	Casing Joints	5 1/2	20.00	P-110	Yes	45.65	Yes			908.3	22,091.65
499	487	Casing Joints	5 1/2	20.00	P-110	Yes	45.70	Yes			862.6	22,137.35
500	488	Casing Joints	5 1/2	20.00	P-110	Yes	45.85	Yes			816.8	22,183.20
501	489	Casing Joints	5 1/2	20.00	P-110	Yes	45.82	Yes			771.0	22,229.02
502	490	Casing Joints	5 1/2	20.00	P-110	Yes	45.83	Yes			725.1	22,274.85
503	491	Casing Joints	5 1/2	20.00	P-110	Yes	45.67	Yes			679.5	22,320.52
504	492	Casing Joints	5 1/2	20.00	P-110	Yes	45.70	Yes			633.8	22,366.22
505	493	Casing Joints	5 1/2	20.00	P-110	Yes	45.84	Yes			587.9	22,412.06
506	494	Casing Joints	5 1/2	20.00	P-110	Yes	45.70	Yes			542.2	22,457.76
507	495	Casing Joints	5 1/2	20.00	P-110	Yes	45.87	Yes			496.4	22,503.63