

KT Resources LLC
WRD Wyatt 25-44 & 25-44W
Loc ID: 336393



Lack of labeling



Weeds

KT Resources LLC
WRD Wyatt 25-44 & 25-44W
Loc ID: 336393

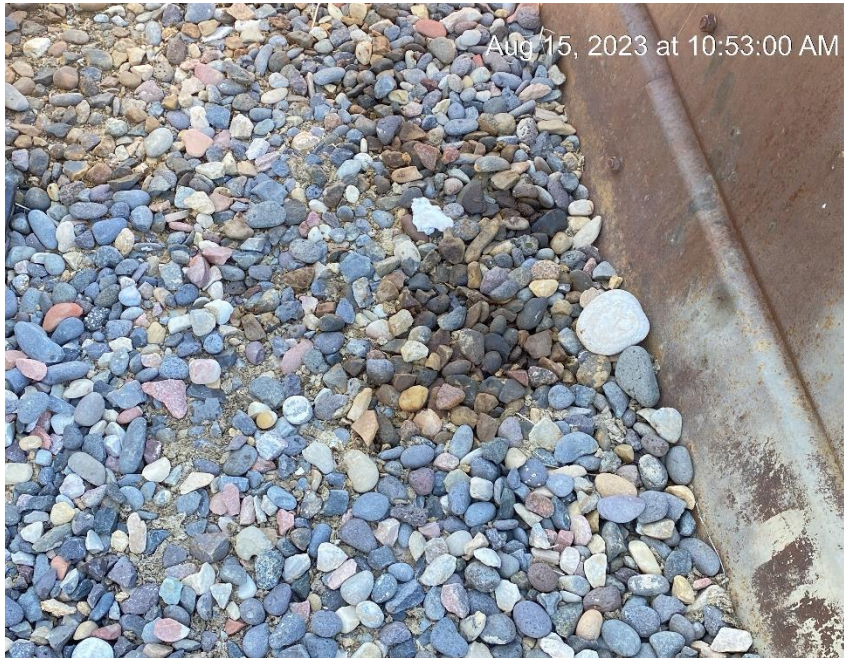


Debris

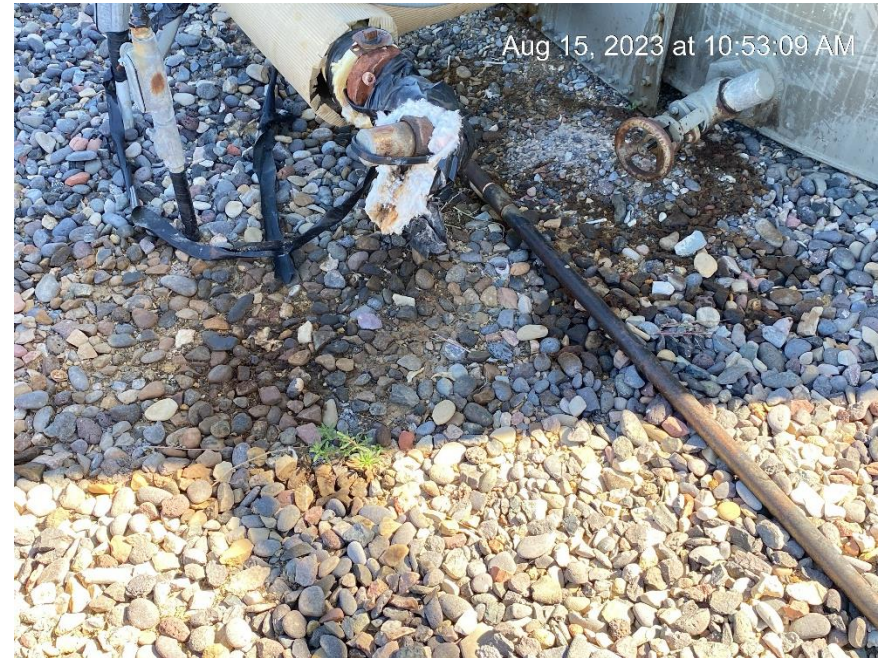


Debris

KT Resources LLC
WRD Wyatt 25-44 & 25-44W
Loc ID: 336393



Stained soil



Stained soil

KT Resources LLC
WRD Wyatt 25-44 & 25-44W
Loc ID: 336393



Equipment leak



Stained soil

KT Resources LLC
WRD Wyatt 25-44 & 25-44W
Loc ID: 336393



Stained soil



Stained soil

KT Resources LLC
WRD Wyatt 25-44 & 25-44W
Loc ID: 336393



Stained soil



Peeling tank label

KT Resources LLC
WRD Wyatt 25-44 & 25-44W
Loc ID: 336393



Unused equipment



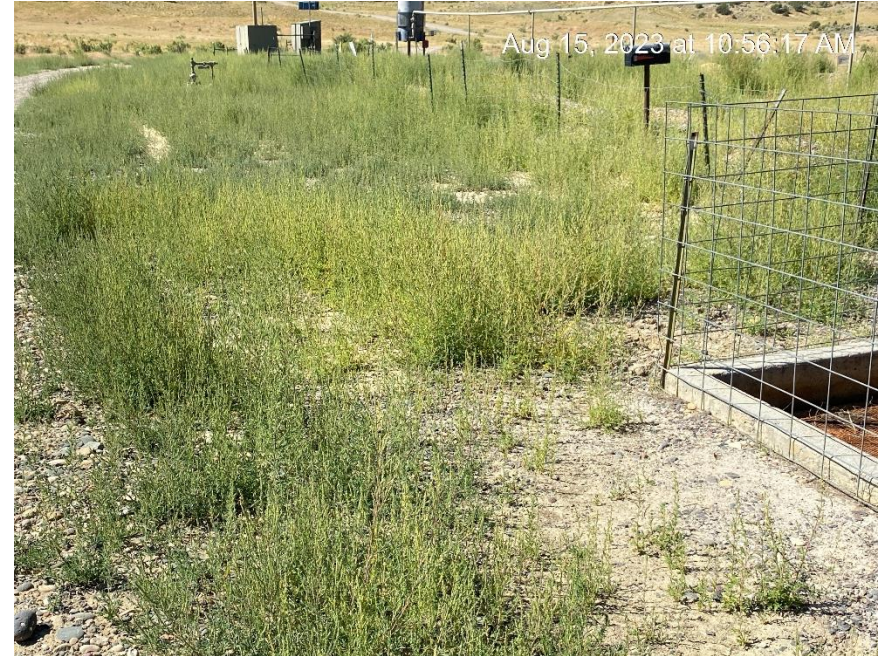
Unused equipment



KT Resources LLC
WRD Wyatt 25-44 & 25-44W
Loc ID: 336393



Debris



Weeds

**KT Resources LLC
WRD Wyatt 25-44 & 25-44W
Loc ID: 336393**



Weeds



Oily waste. Peeling tank label

**KT Resources LLC
WRD Wyatt 25-44 & 25-44W
Loc ID: 336393**



Weeds



Weeds

KT Resources LLC
WRD Wyatt 25-44 & 25-44W
Loc ID: 336393



Weeds. Lack of stormwater BMPs.



Weeds

KT Resources LLC
WRD Wyatt 25-44 & 25-44W
Loc ID: 336393

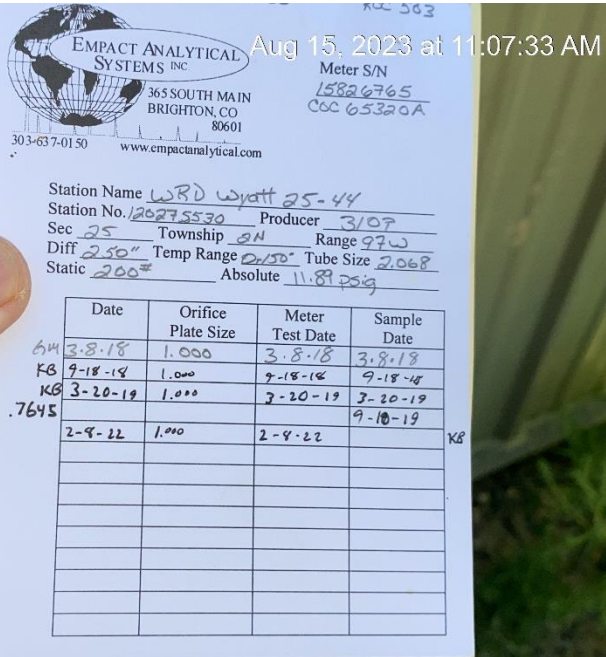


Location entrance sign lacking required information and at separator.



Oily waste and stained soil

Loc ID: 336393



Calibration overdue



Missing required information on well sign

KT Resources LLC
WRD Wyatt 25-44 & 25-44W
Loc ID: 336393



No Bradenhead access



No visible display of gas calibration

KT Resources LLC
WRD Wyatt 25-44 & 25-44W
Loc ID: 336393



Location from Northwest corner



Location from Northeast corner

**KT Resources LLC
WRD Wyatt 25-44 & 25-44W
Loc ID: 336393**



Location from Southeast corner



Location from Southwest corner