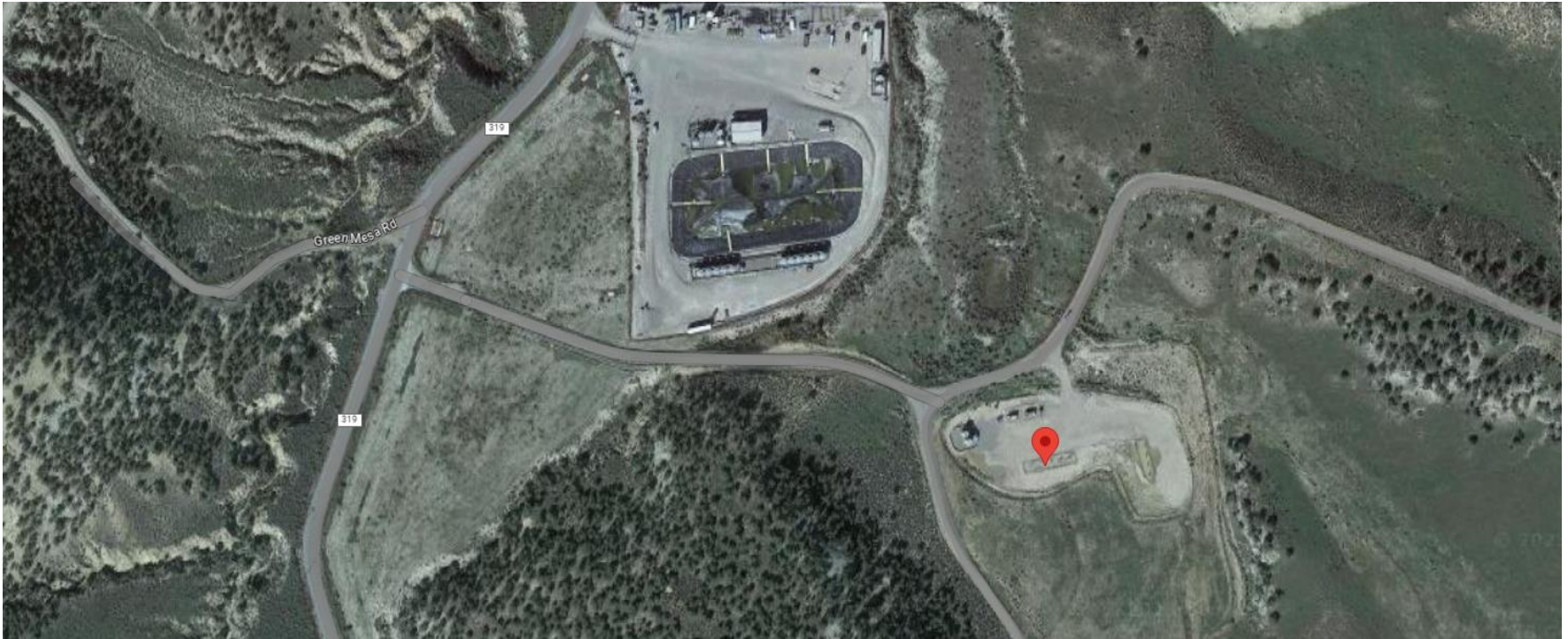


**Storm Water Management and Erosion control**  
**Location Name: CAERUS PICEANCE LLC LAZIER H26NW Pad**  
**Location #: 335312**



**Location Overview: Location is within Rule 411b Generalized External Buffer & Rule 411a Generalized Intermediate Buffer. Location is approximately 432 yards from Dry Creek. Location is within High Priority/Density/Black Bear Habitat areas & in close proximity to NSO Habitat area.**  
**Section/Township/Range: 26 6S93W**



**Storm water Management and Erosion control**  
**Location Name: CAERUS PICEANCE LLC LAZIER H26NW Pad**  
**Location #: 335312**



**North West corner of location.**



**North East corner of location.**



**South West corner of location.**



**South East corner of location.**